

## DESCRIPTION

AMCOM's AM002509XD-P3 is a high IP3 passive double balanced mixer operates with LO drive level range of +10dBm to +16dBm.



## FEATURES

- LO/RF: 5-2500MHz
- IF: 5-1500MHz
- LO Level: +13dBm
- Conversion Loss: 8.5dB
- RF Input: Up to +9dBm
- IP3: +18dBm
- SMA Connector

## APPLICATIONS

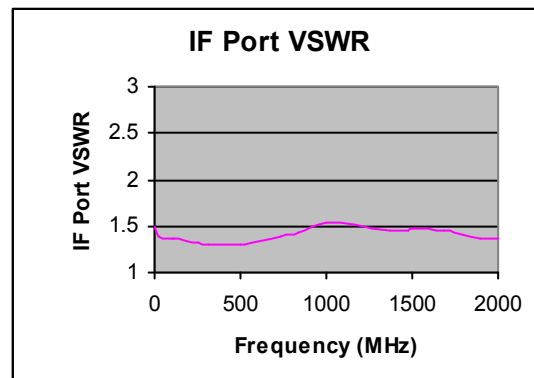
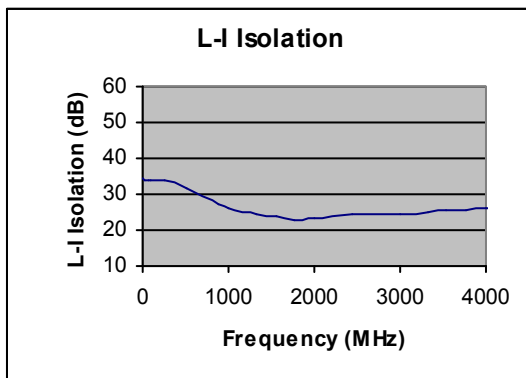
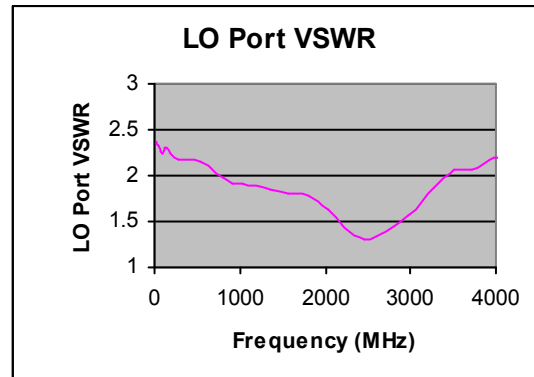
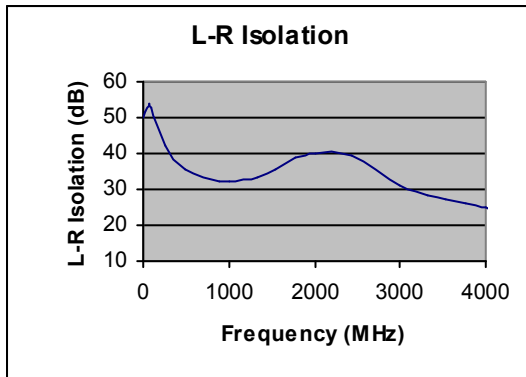
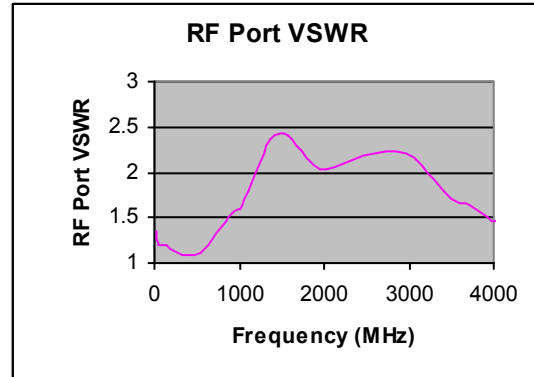
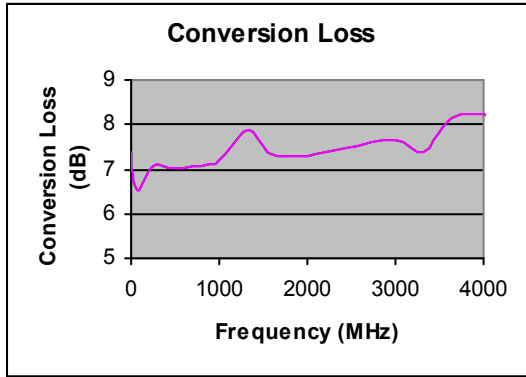
- Telecom Infrastructure
- Military & Aerospace
- VSAT
- Test & Instrumentation
- Radar
- Communication

## Electrical Specifications @ +25°C, LO=+13dBm

Parameter	Unit	Minimum	Typical	Maximum
Frequency Range				
LO/RF	MHz	5		2500
IF	MHz	5		1500
Conversion Loss	dB		8.5	9.8
LO-RF Isolation				
5-50 MHz	dB	28	47	
50-1250MHz	dB	23	34	
1250-2500MHz	dB	23	34	
LO-IF Isolation				
5-50MHz	dB	23	34	
50-1250MHz	dB	20	32	
1250-2500MHz	dB	17	23	
RF Input Power up to	dBm		+9	
IP3 (Center Band)	dBm		+18	

### Typical Performance @ +25°C

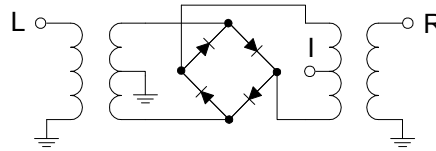
LO = +13dBm



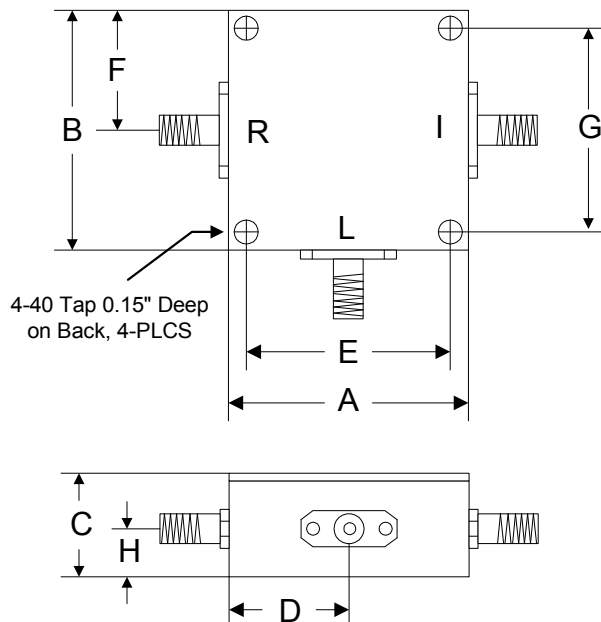
**Absolute Maximum Ratings**

Parameter	Absolute Maximum
RF Power	+23dBm
Peak IF Current	40mA
Operating Temperature	-40 °C to +85 °C
Storage Temperature	-55 °C to +100 °C

**Schematic**



**Outline**



	A	B	C	D	E	F	G	H
Inch	1.250	1.250	0.563	0.625	1.000	0.625	1.000	0.250
mm	31.75	31.75	14.29	15.88	25.40	15.88	25.40	6.35