

## DESCRIPTION

AMCOM's AM042001XD-P3 is a high IP3 passive double balanced mixer operates with LO drive level range of +3dBm to +10dBm.



## FEATURES

- LO/RF: 350-2000MHz
- IF: DC-400MHz
- LO Level: +7dBm
- Conversion Loss: 7dB
- RF Input: Up to +1dBm
- Input IP3: +13dBm
- SMA Connector

## APPLICATIONS

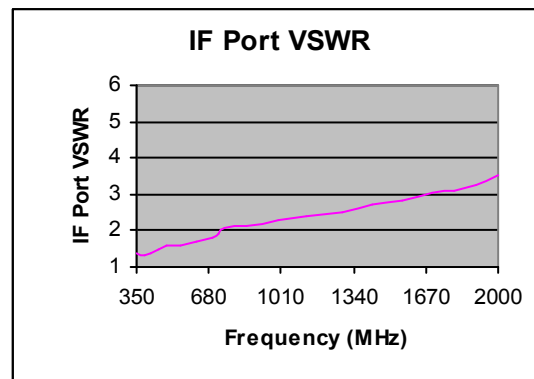
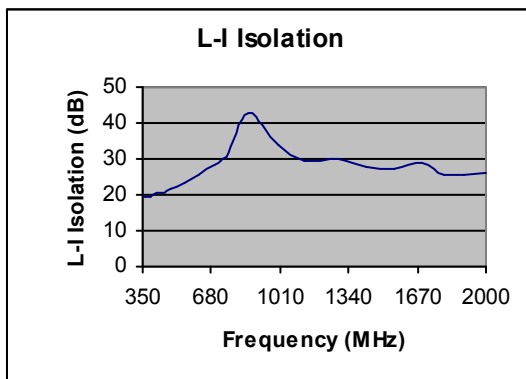
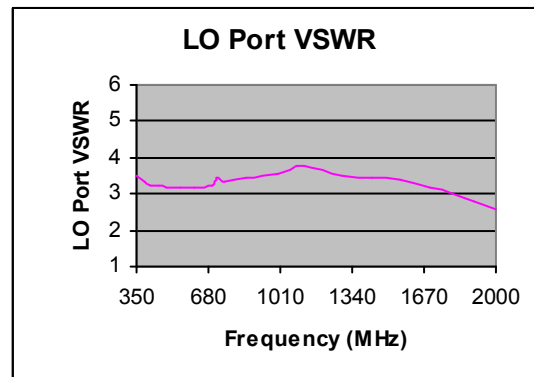
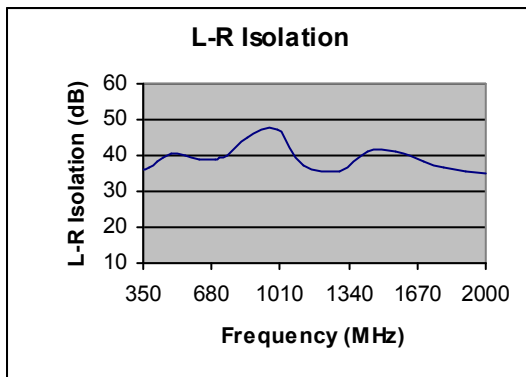
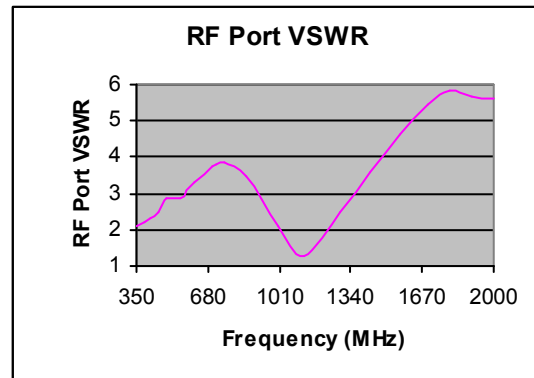
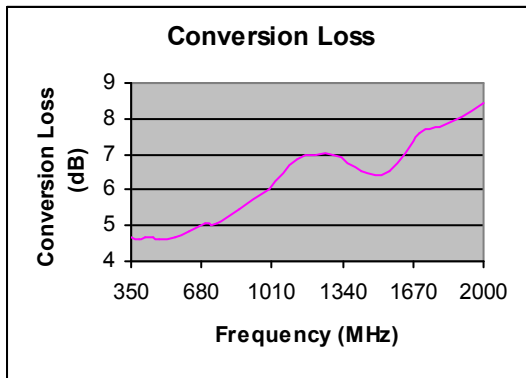
- Telecom Infrastructure
- Military & Aerospace
- VSAT
- Test & Instrumentation
- Radar
- Communication

## Electrical Specifications @ +25°C, LO=+7dBm

| Parameter            | Unit | Minimum | Typical | Maximum |
|----------------------|------|---------|---------|---------|
| Frequency Range      |      |         |         |         |
| LO/RF                | MHz  | 350     |         | 2000    |
| IF                   | MHz  | DC      |         | 400     |
| Conversion Loss      | dB   |         | 7.0     | 9.2     |
| LO-RF Isolation      |      |         |         |         |
| 350-700 MHz          | dB   | 26      | 37      |         |
| 700-1000MHz          | dB   | 20      | 36      |         |
| 1000-2000MHz         | dB   | 20      | 32      |         |
| LO-IF Isolation      |      |         |         |         |
| 350-700MHz           | dB   | 14      | 24      |         |
| 700-1000MHz          | dB   | 20      | 29      |         |
| 1000-2000MHz         | dB   | 20      | 28      |         |
| RF Input Power up to | dBm  |         | +1      |         |
| IP3 (Center Band)    | dBm  |         | +13     |         |

### Typical Performance @ +25 °C

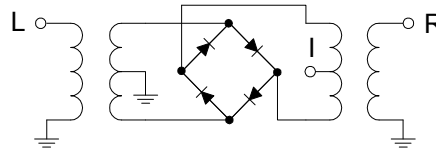
LO = +7dBm



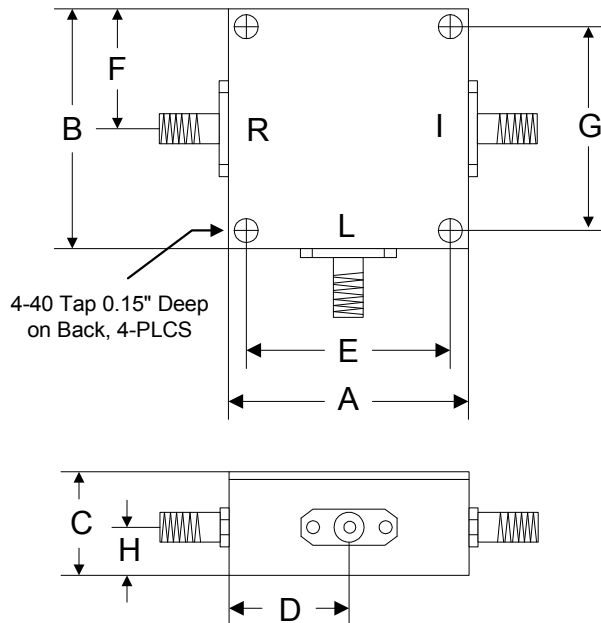
**Absolute Maximum Ratings**

| Parameter             | Absolute Maximum  |
|-----------------------|-------------------|
| RF Power              | +23dBm            |
| Peak IF Current       | 40mA              |
| Operating Temperature | -40 °C to +85 °C  |
| Storage Temperature   | -55 °C to +100 °C |

**Schematic**



**Outline**



|      | A     | B     | C     | D     | E     | F     | G     | H     |
|------|-------|-------|-------|-------|-------|-------|-------|-------|
| Inch | 1.250 | 1.250 | 0.563 | 0.625 | 1.000 | 0.625 | 1.000 | 0.250 |
| mm   | 31.75 | 31.75 | 14.29 | 15.88 | 25.40 | 15.88 | 25.40 | 6.35  |