



## DESCRIPTION

AMCOM's AM072010XD-P4 is a passive double balanced mixer with 700 to 2000MHz at RF/LO port and DC to 500MHz at IF port. The mixer operates with LO drive level range from +10dBm to +16dBm.



## FEATURES

- LO/RF: 700–2000MHz
- IF: DC–500MHz
- LO Level: +13dBm
- Conversion Loss: 9dB typ.
- RF Input: Up to +10dBm
- Input IP3: +17dBm
- SMA Female All Ports

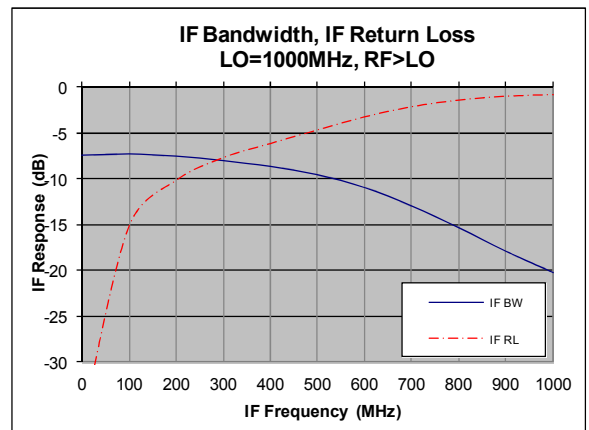
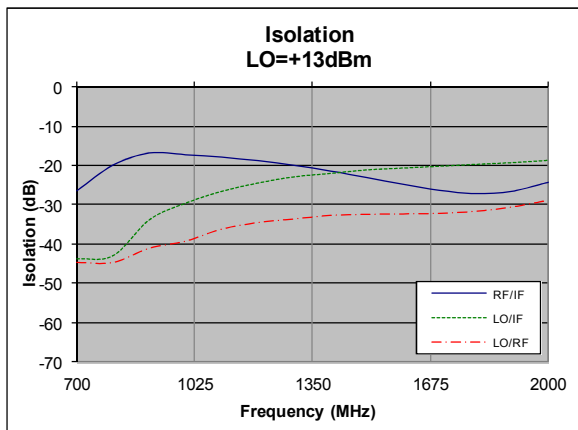
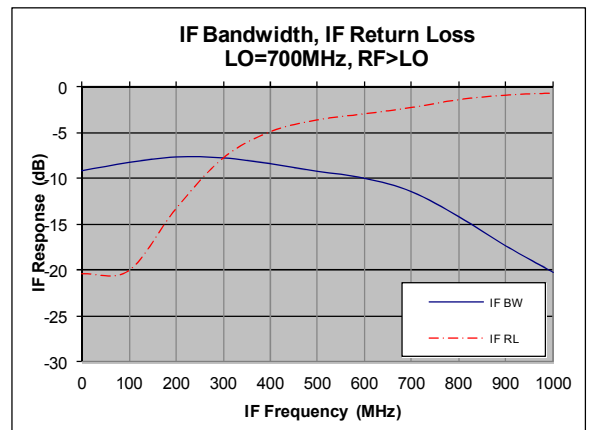
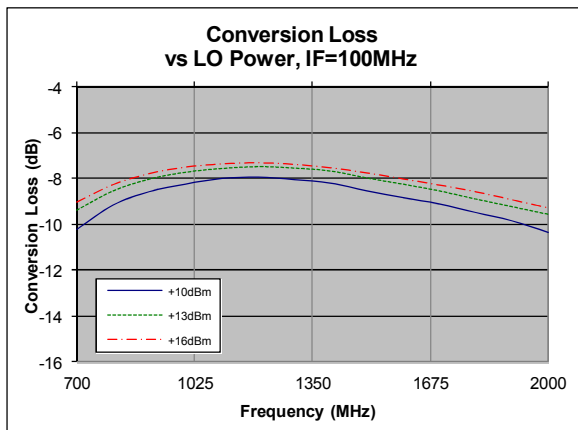
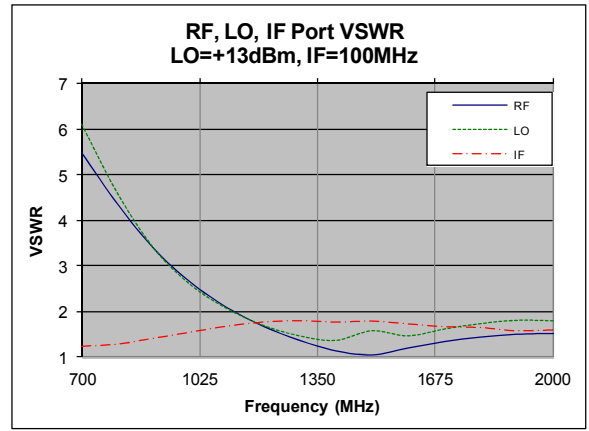
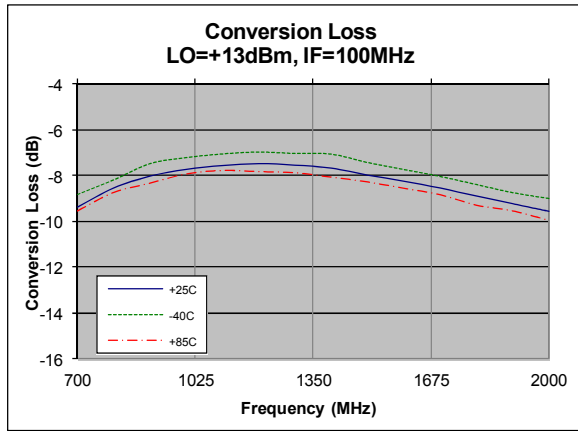
## APPLICATIONS

- Telecom Infrastructure
- Military & Aerospace
- VSAT
- Test & Instrumentation
- Radar
- Communication

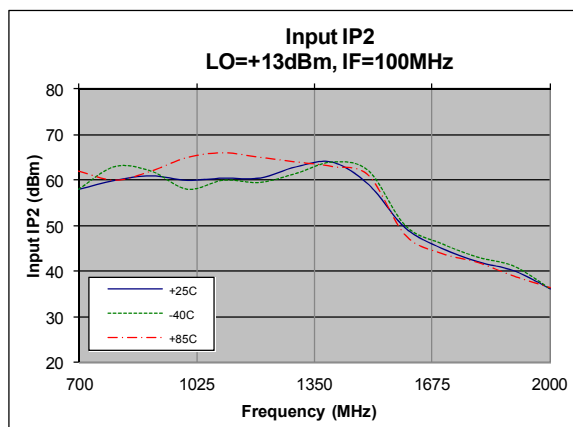
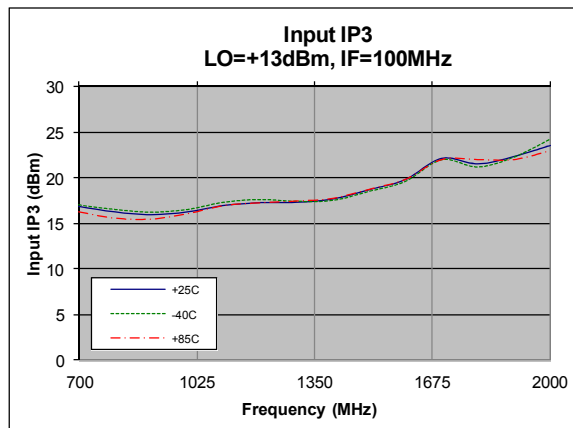
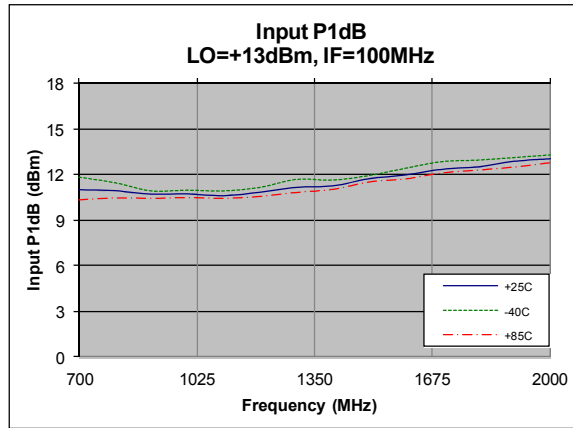
## Electrical Specifications @ +25 °C, IF=100MHz, LO=+13dBm, 50 Ω

Parameter	Unit	Minimum	Typical	Maximum
Frequency Range LO/RF	MHz	700		2000
IF	MHz	DC		500
Conversion Loss	dB		9	10.5
LO-RF Isolation	dB	20	24	
LO-IF Isolation	dB	13	17	
RF-IF Isolation	dB	10	14	
RF Input P <sub>1dB</sub>	dBm	+7	+10	
Input IP3	dBm	+13	+17	

Typical Performance



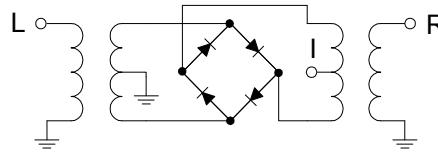
Typical Performance



### Absolute Maximum Ratings

Parameter	Absolute Maximum
RF Power	+13dBm
LO Driver	+27dBm
Operating Temperature	-40 °C to +85 °C
Storage Temperature	-65 °C to +150 °C

### Schematic



### Outline

