



## DESCRIPTION

AMCOM's AM459010XD-P3 is a high IP3 passive double balanced mixer operates with LO drive level range of +9dBm to +17dBm.



## FEATURES

- LO/RF: 4.5 – 9.0GHz
- IF: DC – 2.5GHz
- LO Level: +13dBm
- Conversion Loss: 8.5dB
- RF Input: Up to +10dBm
- IP3: +21dBm
- SMA Connector

## APPLICATIONS

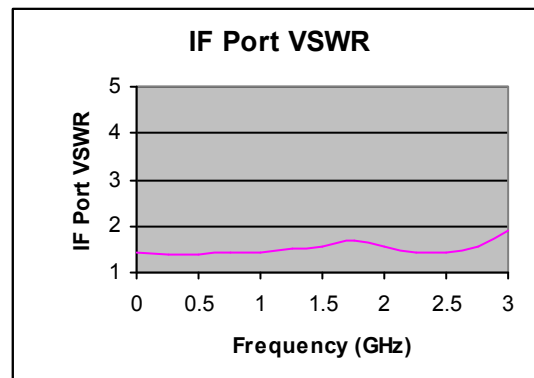
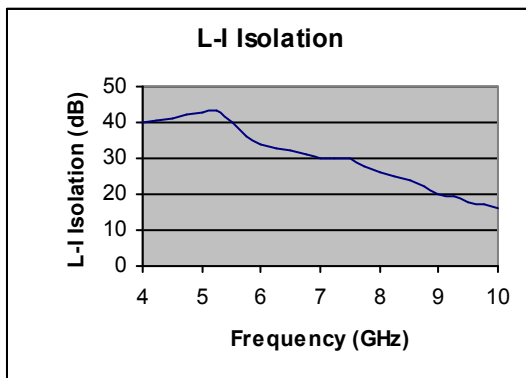
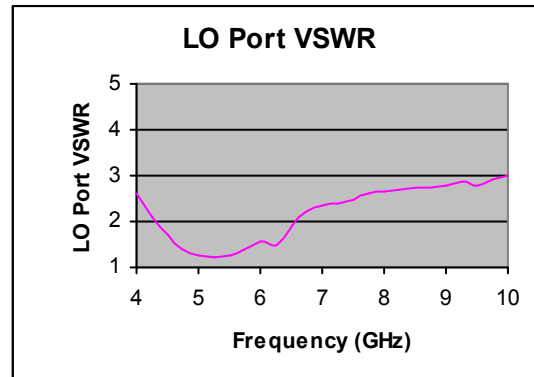
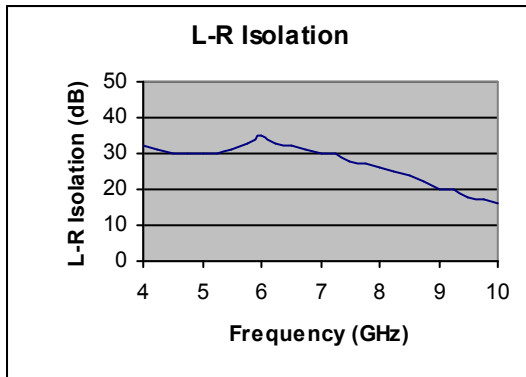
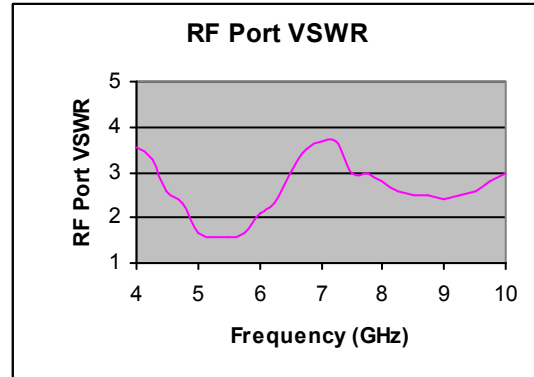
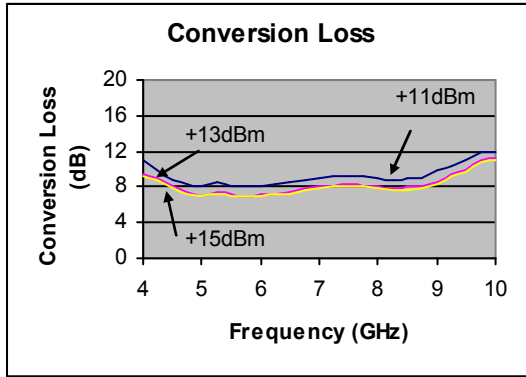
- Telecom Infrastructure
- Military & Aerospace
- VSAT
- Test & Instrumentation
- Radar
- Communication

## Electrical Specifications @ +25°C, LO=+13dBm

Parameter	Unit	Minimum	Typical	Maximum
Frequency Range				
LO/RF	GHz	4.5		9.0
IF	GHz	DC		2.5
Conversion Loss	dB		8.5	10
LO-RF Isolation				
4.5 – 9.0 GHz	dB	17	25	
LO-IF Isolation				
4.5 – 9.0GHz	dB	17	25	
RF Input Power up to	dBm	+7	+10	
IP3 (Center Band)	dBm	+15	+21	

Typical Performance @ +25°C

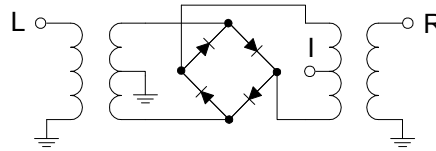
LO = +13dBm



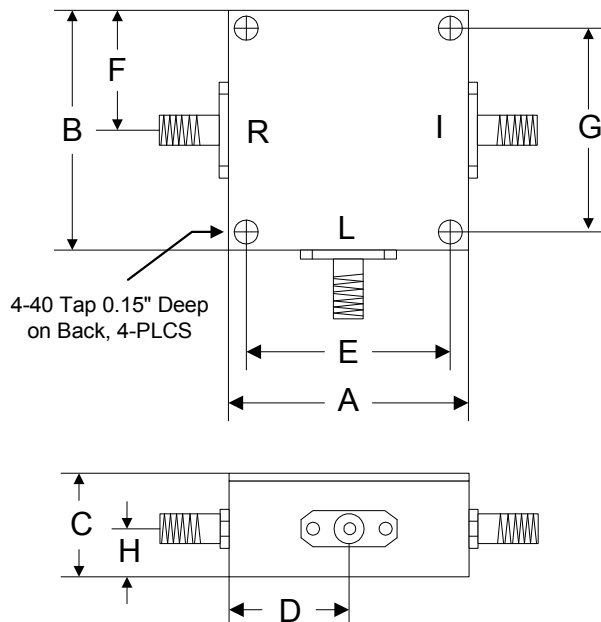
**Absolute Maximum Ratings**

Parameter	Absolute Maximum
RF/IF Power	+13dBm
LO Power	+27dBm
Operating Temperature	-40 °C to +85 °C
Storage Temperature	-55 °C to +100 °C

**Schematic**



**Outline**



	A	B	C	D	E	F	G	H
Inch	1.250	1.250	0.563	0.625	1.000	0.625	1.000	0.250
mm	31.75	31.75	14.29	15.88	25.40	15.88	25.40	6.35