

# COMAX<sup>®</sup>

## REINFORCEMENT CONTINUITY STRIP





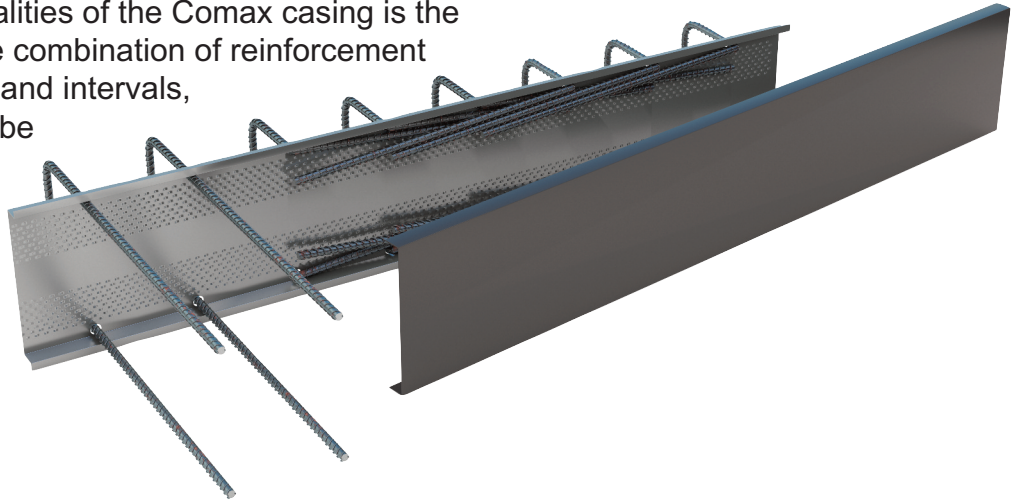
## Comax - Reinforcement Continuity Strip

### Contents

Page 2	Introduction
Page 3	Comax Qualities
Page 4	Standard Profiles
Page 5	UK Stock Range
Page 6	Euro Stock Range
Page 7	Alternative Specifications
Page 8	Installation
Page 9	Bespoke Range & Enquiry Form
Page 10	Continuity Strip Couplers

## Introduction

Euro Accessories is the sole distributor in the UK and Ireland for the Comax Continuity System. Comax is one of Europe's premier reinforcement continuity systems allowing the engineer to specify a product that can simplify formwork designs, leading to faster concrete pour schedules and a reduction in project costs. With a continuous product development process spanning more than thirty years, engineers and contractors can have full confidence in utilising a product that has been incorporated in many of Europe's most prestigious civil engineering projects. The Comax continuity system has been utilised in a wide range of applications from tunnel inverts on the Channel Tunnel Rail Link to a critical component in the production of lift shafts on some of Canary Wharf's tallest structures. Allied to the unique qualities of the Comax casing is the availability of an infinite combination of reinforcement bar diameters, shapes and intervals, allowing the system to be substituted for any reinforcement bar configuration that may arise.



## Advantages:

The Comax continuity system offers many advantages over traditional formwork and starter bar methods. To ensure the engineer has an option to substitute any reinforcement steel detail for a like for like Comax continuity system, we offer an infinite range of bar configurations with rapid turn around times.

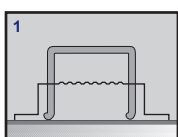
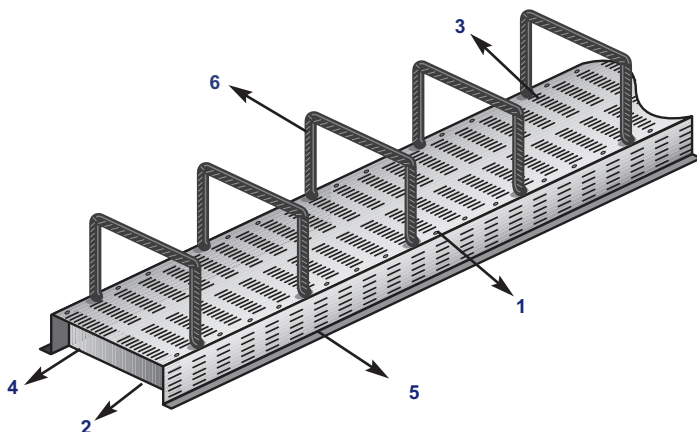
Due to the technical benefits of Comax allied to it's simplicity of use, the system allows accelerated pour schedules, reductions in labour costs, a safer environment and improved production standards.

## Accreditations

**CARES Technical Approval Certificate No. TA2 5072**

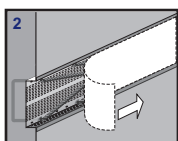
**KOMO Certificate No. KA42168/01**





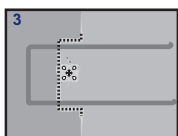
### **1. The specially textured, micro perforated casing guarantees perfect concrete bonding**

The micro perforated casing ensures the casing is fully integrated into the concrete structure, the small amount of fats that protrude through the system provide an excellent key for subsequent pours, this negates the need to scabble the joint face for the second pour. The perforations reduce the chances of honeycombing of concrete at the formwork face as entrapped air will pass through the casing. The perforated casing makes the system ideal for use in water retaining structures as the case does not provide a means for water to track along the joint.



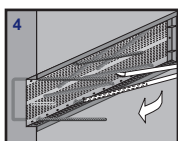
### **2. The tear off back cover achieves considerable time savings**

The perforated tear off backing strip is manufactured from recycled unplasticized PVC. These are simple to remove without special tools and are easily disposed of or in some areas recycled. The lids can be left in place until the pull out bars are required, preventing contamination of the bars with construction chemicals and protecting operatives from dangerous protruding bars. This benefit can be highly effective when utilised in precast elements as it reduces overall dimensions aiding transport and handling of units.



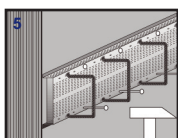
### **3. Open geometry casing allows waterproofing by injection after concreting if required**

Open structure of casing allows injection waterproofing systems to be installed prior to the second pour. The system can also be fitted with a hydrophilic waterproofing strip prior to supply which is incorporated in the first concrete pour.



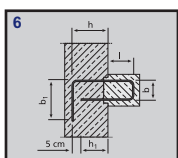
### **4. The precision casing allows very fast formwork removal**

The exacting tolerances utilised in the manufacturing of the cases and lids combined with the easily removed plastic end sealing caps ensures that no aggregate or slurry can enter the casing other than a small amount of fats providing a key. This in turn means the bars are easily accessed. Euro Accessories provide a range of tools to crank the starter bars into position. Euro Accessories do not recommend the use of scaffolding bars as this can result in an undesirable kink in the bar. The unique nature of our straightening tools means the bar is straightened right at the concrete interface.



### **5. Various fixing options are available for quick and effective installation**

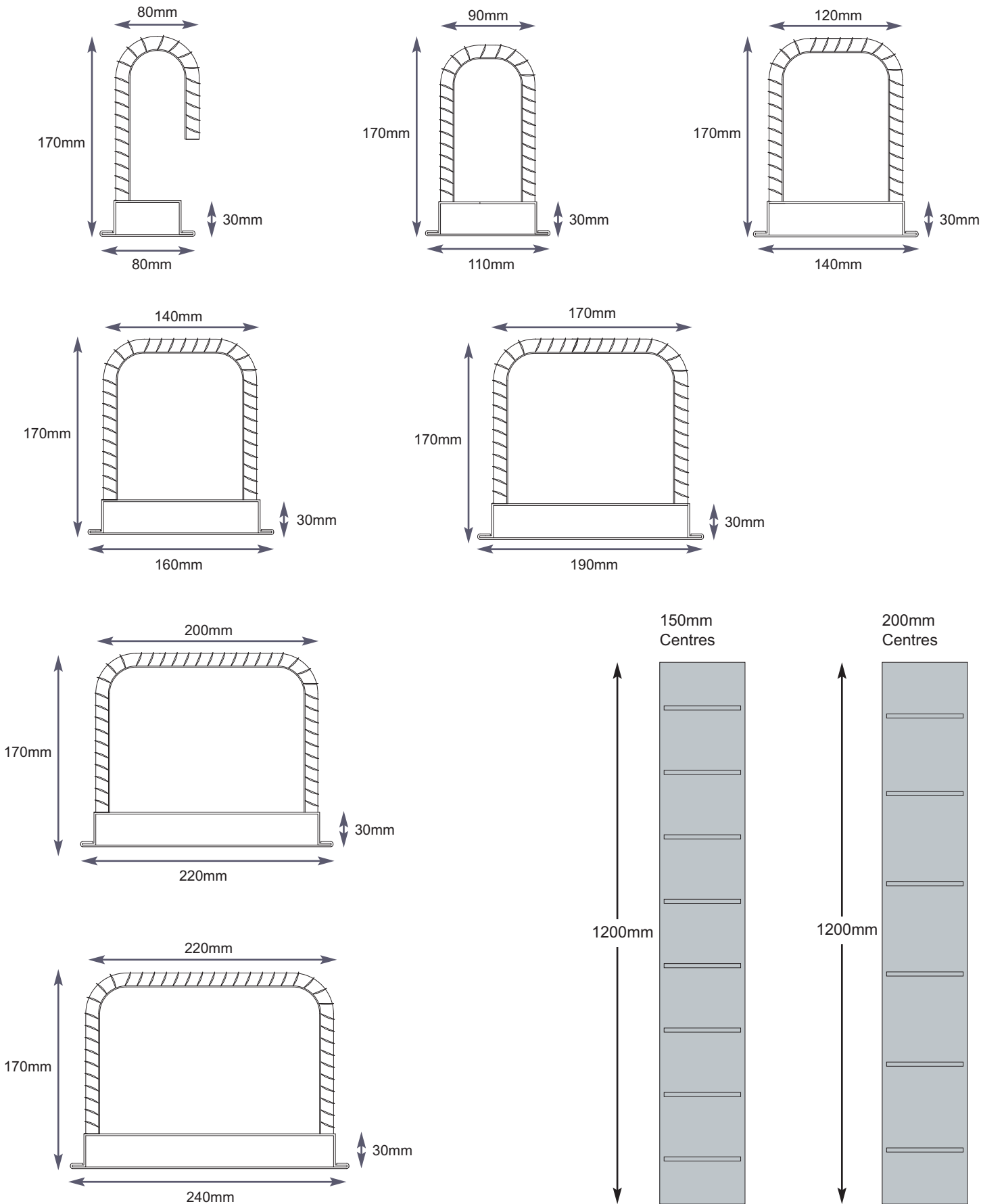
The casing can be nailed to timber or particle board formwork. An extremely strong magnetic strip for metal formwork is available. Marked for easy positioning and recovery.



### **6. Special designs available for all requirements**

Various stirrup designs made to your specific requirements.  
Stirrup centres available in 150, 200, 250 and 300mm.  
Reinforcement bars available from 6 to 16mm.  
Case lengths from a standard UK range 1.20mtr up to 2.5mtr.

# Standard Profiles





## UK Range

Product Code	Case Dimensions			Rebar Dimensions					Bars per Box (no)	Pallet Qty (mtrs)
	Width (mm)	Length (mm)	Depth (mm)	Dia. (mm)	Centres (mm)	Height (mm)	Width (mm)	Lap Length (mm)		
<b>CCS0801215U</b>	<b>80</b>	<b>1200</b>	<b>30</b>	<b>12</b>	<b>150</b>	<b>170</b>	<b>80</b>	<b>480</b>	<b>8</b>	<b>187.5</b>
<b>CCS0801220U</b>	<b>80</b>	<b>1200</b>	<b>30</b>	<b>12</b>	<b>200</b>	<b>170</b>	<b>80</b>	<b>480</b>	<b>6</b>	<b>187.5</b>
CCS1101015U	110	1200	30	10	150	170	90	400	8	100.0
CCS1101020U	110	1200	30	10	200	170	90	400	6	100.0
CCS1101215U	110	1200	30	12	150	170	90	480	8	100.0
CCS1101220U	110	1200	30	12	200	170	90	480	6	100.0
CCS1401015U	140	1200	30	10	150	170	120	400	8	135.0
CCS1401020U	140	1200	30	10	200	170	120	400	6	135.0
<b>CCS1401215U</b>	<b>140</b>	<b>1200</b>	<b>30</b>	<b>12</b>	<b>150</b>	<b>170</b>	<b>120</b>	<b>480</b>	<b>8</b>	<b>135.0</b>
<b>CCS1401220U</b>	<b>140</b>	<b>1200</b>	<b>30</b>	<b>12</b>	<b>200</b>	<b>170</b>	<b>120</b>	<b>480</b>	<b>6</b>	<b>135.0</b>
CCS1601015U	160	1200	30	10	150	170	140	400	8	105.0
CCS1601020U	160	1200	30	10	200	170	140	400	6	105.0
<b>CCS1601215U</b>	<b>160</b>	<b>1200</b>	<b>30</b>	<b>12</b>	<b>150</b>	<b>170</b>	<b>140</b>	<b>480</b>	<b>8</b>	<b>105.0</b>
<b>CCS1601220U</b>	<b>160</b>	<b>1200</b>	<b>30</b>	<b>12</b>	<b>200</b>	<b>170</b>	<b>140</b>	<b>480</b>	<b>6</b>	<b>105.0</b>
CCS1901015U	190	1200	30	10	150	170	170	400	8	90.0
CCS1901020U	190	1200	30	10	200	170	170	400	6	90.0
<b>CCS1901215U</b>	<b>190</b>	<b>1200</b>	<b>30</b>	<b>12</b>	<b>150</b>	<b>170</b>	<b>170</b>	<b>480</b>	<b>8</b>	<b>90.0</b>
<b>CCS1901220U</b>	<b>190</b>	<b>1200</b>	<b>30</b>	<b>12</b>	<b>200</b>	<b>170</b>	<b>170</b>	<b>480</b>	<b>6</b>	<b>90.0</b>
<b>CCS1901615U</b>	<b>190</b>	<b>1200</b>	<b>30</b>	<b>16</b>	<b>150</b>	<b>170</b>	<b>170</b>	<b>640</b>	<b>8</b>	<b>67.5</b>
<b>CCS1901620U</b>	<b>190</b>	<b>1200</b>	<b>30</b>	<b>16</b>	<b>200</b>	<b>170</b>	<b>170</b>	<b>640</b>	<b>6</b>	<b>67.5</b>
CCS2201015U	220	1200	30	10	150	170	200	400	8	60.0
CCS2201020U	220	1200	30	10	200	170	200	400	6	60.0
CCS2201215U	220	1200	30	12	150	170	200	480	8	60.0
CCS2201220U	220	1200	30	12	200	170	200	480	6	60.0
CCS2201615U	220	1200	30	16	150	170	200	640	8	45.0
CCS2201620U	220	1200	30	16	200	170	200	640	6	45.0
CCS2401015U	240	1200	30	10	150	170	220	400	8	60.0
CCS2401020U	240	1200	30	10	200	170	220	400	6	60.0
CCS2401215U	240	1200	30	12	150	170	220	480	8	60.0
CCS2401220U	240	1200	30	12	200	170	220	480	6	60.0
<b>CCS2401615U</b>	<b>240</b>	<b>1200</b>	<b>30</b>	<b>16</b>	<b>150</b>	<b>170</b>	<b>220</b>	<b>640</b>	<b>8</b>	<b>45.0</b>
<b>CCS2401620U</b>	<b>240</b>	<b>1200</b>	<b>30</b>	<b>16</b>	<b>200</b>	<b>170</b>	<b>220</b>	<b>640</b>	<b>6</b>	<b>45.0</b>

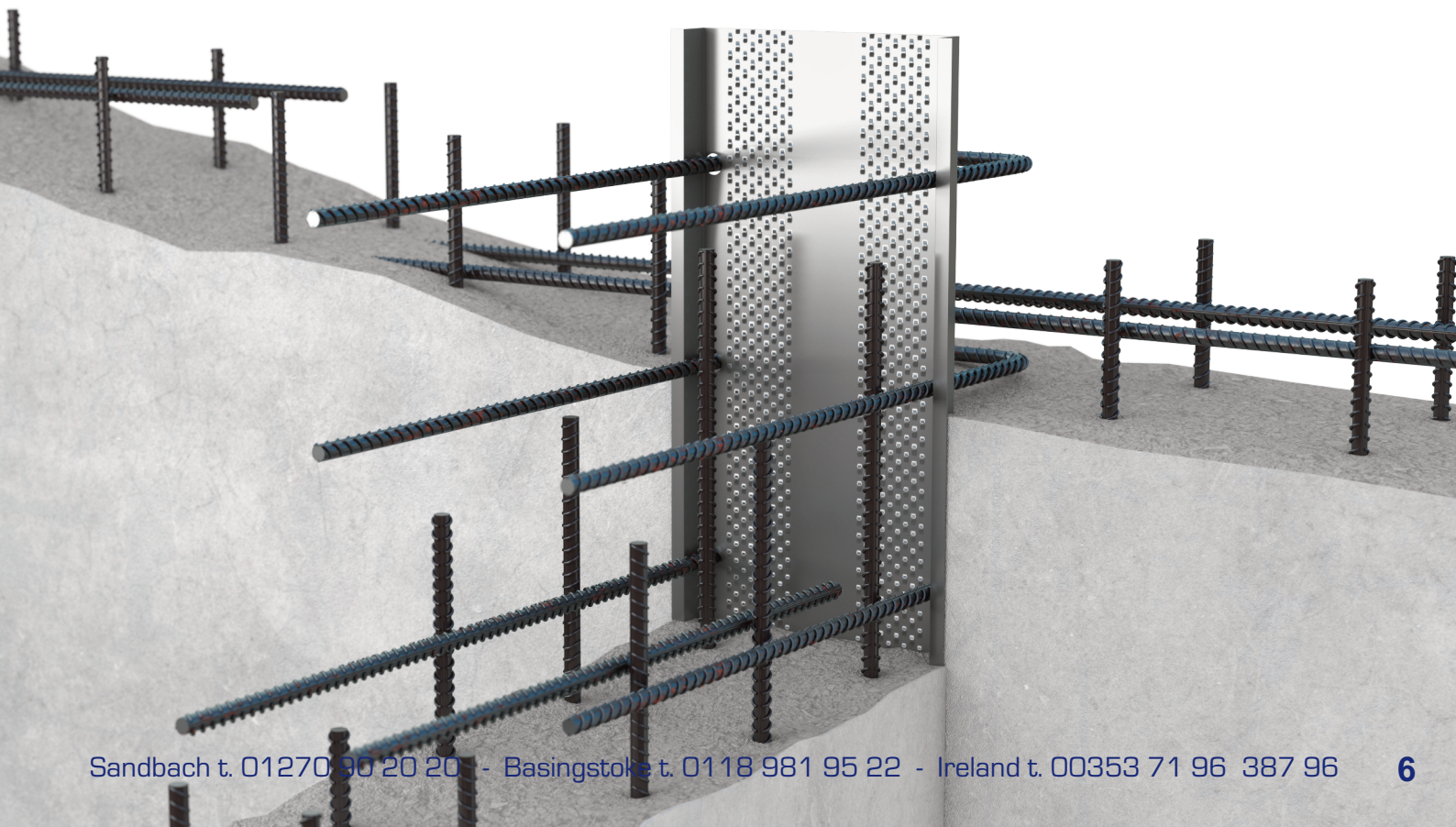
**Notes:** Product codes in **bold** text, are normally available from stock.

Sizes which consist of 16mm rebar and 150mm centres are manufactured using a double hook bar rather than a single U bar (Type 'H2'). 8mm rebar available on request.



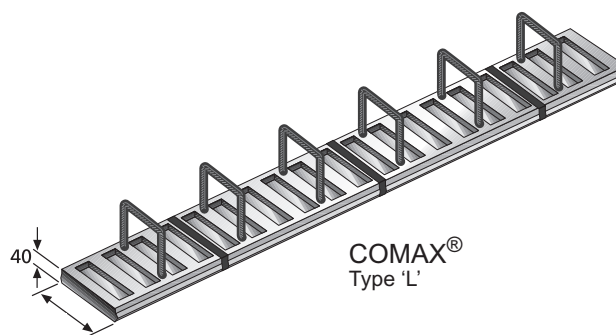
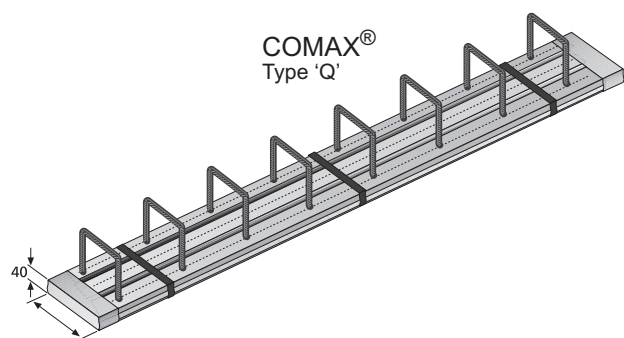
## Euro Range

Product Code	Case Dimensions			Rebar Dimensions					Bars per Box (no)	Pallet Qty (mtrs)
	Width (mm)	Length (mm)	Depth (mm)	Dia. (mm)	Centres (mm)	Height (mm)	Width (mm)	Lap Length (mm)		
CCS0801015E	80	1250	30	10	150	150	60	390	8	187.5
CCS0801020E	80	1250	30	10	200	150	60	390	6	187.5
CCS0801215E	80	1250	30	12	150	150	80	460	8	187.5
CCS0801220E	80	1250	30	12	200	150	80	460	6	187.5
CCS1101215E	110	1250	30	12	150	150	90	460	8	100.0
CCS1101220E	110	1250	30	12	200	150	90	460	6	100.0
CCS1401215E	140	1250	30	12	150	150	120	460	8	135.0
CCS1401220E	140	1250	30	12	200	150	120	460	6	135.0
CCS1601215E	160	1250	30	12	150	150	140	460	8	105.0
CCS1601220E	160	1250	30	12	200	150	140	460	6	105.0
CCS1901215E	190	1250	30	12	150	150	170	460	8	90.0
CCS1901220E	190	1250	30	12	200	150	170	460	6	90.0
CCS2201215E	220	1250	30	12	150	150	200	460	8	60.0
CCS2201220E	220	1250	30	12	200	150	200	460	6	60.0
CCS2401215E	240	1250	30	12	150	150	220	460	8	60.0
CCS2401220E	240	1250	30	12	200	150	220	460	6	60.0



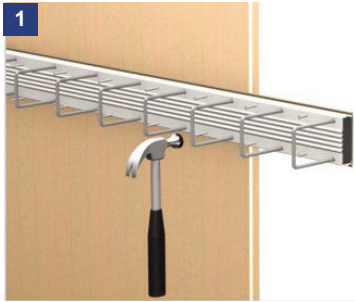


COMAX® Q	Case Dimensions			Rebar Dimensions					Bars per Box (no)	Pallet Qty (mtrs)
	Width (mm)	Length (mm)	Depth (mm)	Dia. (mm)	Centres (mm)	Height (mm)	Width (mm)	Lap Length (mm)		
<ul style="list-style-type: none"> <li>● Toothing in the <b>longitudinal</b> direction for optimal force transmission.</li> <li>● COMAX® Q for exposure to shear forces perpendicular to the joint.</li> <li>● Significant advantages for planners: acc. to DIN1045-1 COMAX® Q is classed as 'toothed'.</li> <li>● Dimensionally stable cover facilitates short striking times.</li> <li>● Special types are also available on request.</li> <li>● Also available with 16mm rebar.</li> </ul>	110	1250	40	10	150	150	90	390	8	100
	110	1250	40	10	200	150	90	390	6	100
	140	1250	40	10	150	150	120	390	8	135
	140	1250	40	10	200	150	120	390	6	135
	140	1250	40	12	150	150	120	460	8	135
	140	1250	40	12	200	150	120	460	6	135
	160	1250	40	10	150	150	140	390	8	105
	160	1250	40	10	200	150	140	390	6	105
	160	1250	40	12	150	150	140	460	8	105
	160	1250	40	12	200	150	140	460	6	105
	190	1250	40	10	150	150	170	390	8	90
	190	1250	40	10	200	150	170	390	6	90
	190	1250	40	12	150	150	170	460	8	90
	190	1250	40	12	200	150	170	460	6	90



COMAX® L	Case Dimensions			Rebar Dimensions					Bars per Box (no)	Pallet Qty (mtrs)
	Width (mm)	Length (mm)	Depth (mm)	Dia. (mm)	Centres (mm)	Height (mm)	Width (mm)	Lap Length (mm)		
<ul style="list-style-type: none"> <li>● Toothing in the <b>transverse</b> direction for optimal force transmission.</li> <li>● COMAX® L for exposure to longitudinal shear forces parallel to the joint.</li> <li>● Significant advantages for planners: acc. to DIN1045-1 COMAX® L is classed as 'toothed'.</li> <li>● Dimensionally stable cover facilitates short striking times.</li> <li>● Special types are also available on request.</li> <li>● Also available with 16mm rebar.</li> </ul>	110	1250	40	10	150	150	90	390	8	100
	110	1250	40	10	200	150	90	390	6	100
	140	1250	40	10	150	150	120	390	8	135
	140	1250	40	10	200	150	120	390	6	135
	140	1250	40	12	150	150	120	460	8	135
	140	1250	40	12	200	150	120	460	6	135
	160	1250	40	10	150	150	140	390	8	105
	160	1250	40	10	200	150	140	390	6	105
	160	1250	40	12	150	150	140	460	8	105
	160	1250	40	12	200	150	140	460	6	105
	190	1250	40	10	150	150	170	390	8	90
	190	1250	40	10	200	150	170	390	6	90
	190	1250	40	12	150	150	170	460	8	90
	190	1250	40	12	200	150	170	460	6	90

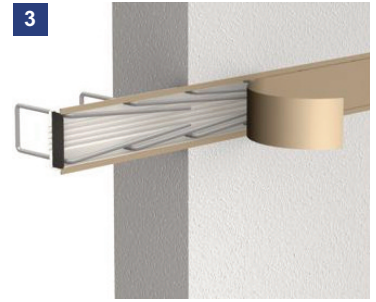
## Installation



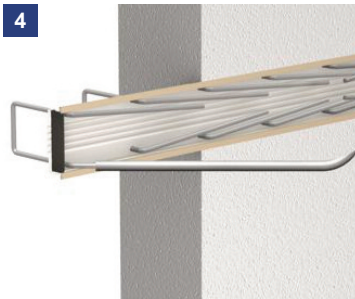
The Comax is either nailed to timber shuttering or tied back to the reinforcement steel prior to steel shutters being closed up.



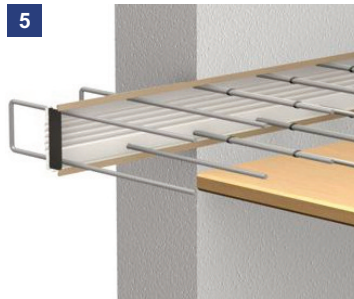
The Comax is encapsulated in the first concrete pour.



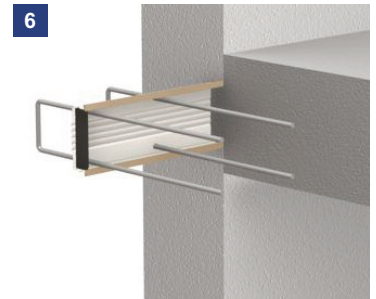
After striking the shutters, the tear of lids are exposed. These are removed to expose the lap bars.



The bars can now be bent into their final position using the recommended re-bending tool (CCST). Please note this process should be carried out as late as possible during the construction program to reduce the exposure to projecting bars.

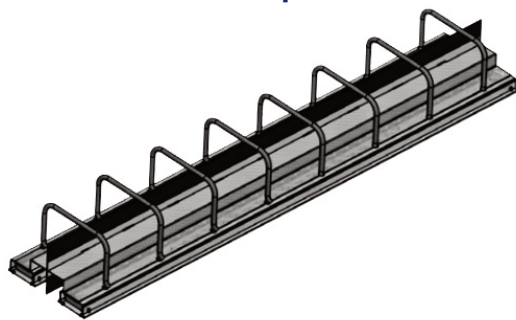


The shuttering system and reinforcement for the second pour can now be installed.



The second concrete pour completes the process. Note the keyed profile of the horizontal pour.

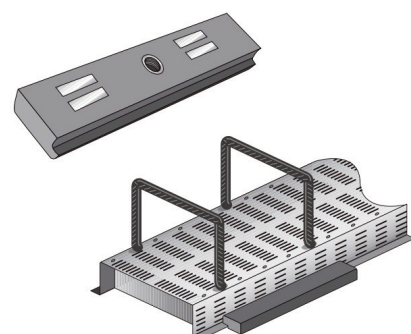
## Comax® Water Stop



### Advantages:

- Ideal solution for construction joints in water tight structures.
- Utilises the combined technical advantages of Comax continuity strip and Betomax waterproofing systems.
- The water-stop is provided with Betomax FB 120 strip.
- Supplied in standard lengths 1.20m.
- Utilises a unique twin tray system available in widths ranging from 160mm to 480mm.
- The continuity system supports the water-stop during the construction process. So no additional fixings are required for the water stop.

## Comax® PU Magnet

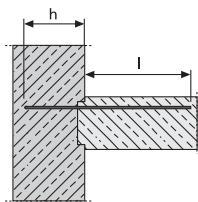


### Advantages:

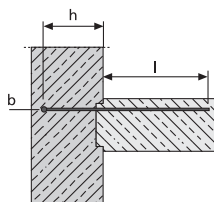
- High magnetic bond force to the shutter face, only 4 magnets are required per 1.20m length of Comax.
- The magnets are uniquely shaped to engage with the Comax casing.
- Long lasting and durable. Up to ten pours possible per magnet.
- Easy to fix and remove with basic tools.
- Simple threaded disengagement mechanism.
- Suitable for both precast and in situ concrete, where steel shuttering is used.



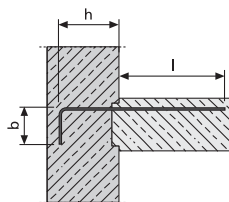
## Enquiry Form



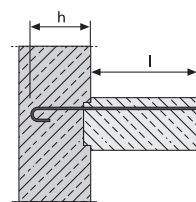
Type 'W'



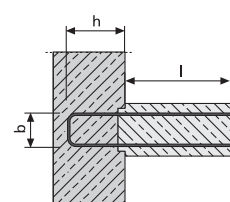
Type 'WH'



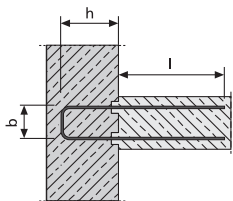
Type 'WS'



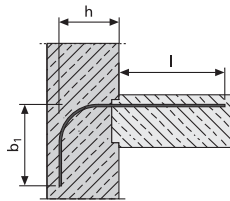
Type 'H'



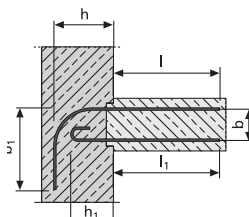
Type 'S1'



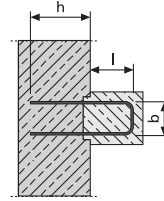
Type 'B'



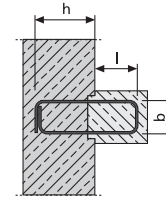
Type 'BA'



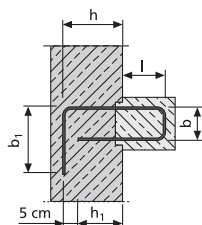
Type 'BA' Extra



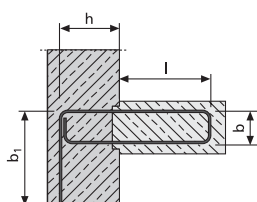
Type 'KO'



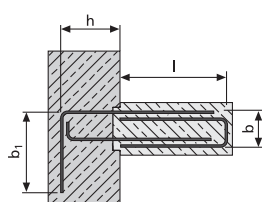
Type 'K'



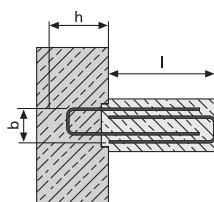
Type 'KH'



Type 'BK'



Type 'KHS'



Type 'KS'



Line Ref.	Case Dimensions			Rebar Dimensions							
	Type Ref.	Width (mm)	Length (mm)	Dia. (mm)	Centres (mm)	h (mm)	h1 (mm)	l (mm)	l1 (mm)	b (mm)	b1 (mm)
<i>Example</i>	<i>WS</i>	<i>110</i>	<i>1200</i>	<i>12</i>	<i>150</i>	<i>110</i>	<i>---</i>	<i>500</i>	<i>---</i>	<i>90</i>	<i>---</i>
A											
B											
C											
D											
E											
F											
G											
H											
I											
J											
K											
L											
M											

Company: \_\_\_\_\_  
 Contact : \_\_\_\_\_  
 Tel: \_\_\_\_\_  
 Email: \_\_\_\_\_

Required by: \_\_\_\_\_  
 Notes: \_\_\_\_\_  
 \_\_\_\_\_  
 \_\_\_\_\_

## COMAX® GTB

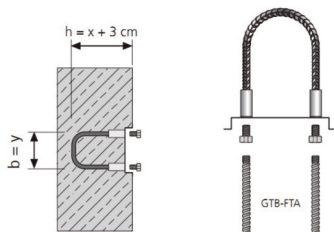
COMAX® GTB, The best of both worlds. It is the logical extension of our well-known reinforcement technologies that combines both the broad range of diameters of our coupler system GripTec® GTB and the benefits of the joint design of our continuity strip system COMAX®.

COMAX® GTB facilitates the use of longer lap lengths and a wider range of reinforcement diameters ( $\varnothing$  12 mm – 25 mm). Furthermore, it does not affect the profile of reinforcing steel and guarantees a full force transmission in tensile and compression.

COMAX® GTB is also approved for structural and dynamic load applications. COMAX® GTB is a highly economic solution, which is particularly suitable for a quick and fast installation of large quantities of couplers with predetermined bar intervals. The pre-fabricated elements lower the installation time significantly and guarantee a structural joint design in accordance with EC2 “smooth” or “toothed”.

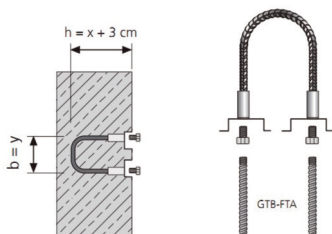
### COMAX® GTB – The faster continuity strip system

The industrial pre-fabricated COMAX® GTB screw connection system element is a combined application for structural and dynamic load transmission.



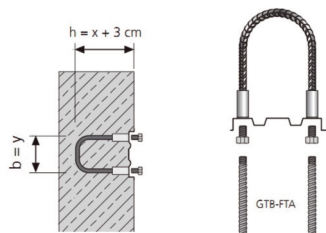
#### COMAX® P, Q, and L - GTB

- Standard box length: 1,20 m (different length on demand).
- Couplers are completely embedded within the first concrete section.
- Low slip connection provided by screw on couplers.
- Huge variety of special elements with a different stirrup design or single bar measurements on demand.



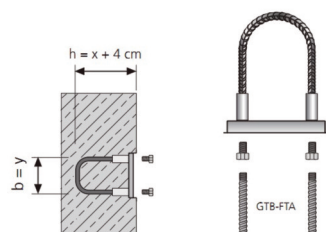
#### COMAX® P - GTB

- Box height 30mm.
- Design advantages for the engineers: Perfect concrete bonding due to our perforated and ribbed sheet metal plate.
- Construction advantages for contractors: Fast stripping of formwork and no need for supplementary tools owed to our proven zip-cover technology.
- Suitable for the use with BETOMAX® injection systems.
- High penetrability of grouting.



#### COMAX® Q - GTB

- Box height 30mm.
- Toothings in longitudinal direction guaranteeing ideal force transmission parallel to the joint.
- Design advantages for engineers: COMAX® Q-GTB is classified as “toothed” acc. to EC2.
- Construction advantages for contractors: Fast stripping of formwork and no need for supplementary tools owed to our proven zip-cover technology.



#### COMAX® L - GTB

- Box height 46mm.
- Toothings in transverse direction guaranteeing an ideal force transmission parallel to the joint.
- Design advantages for engineers: COMAX® L-GTB is classified as “toothed” acc. to EC2.
- Construction advantages for contractors: Fast stripping of formwork and no need for supplementary tools owed to our stable cover.

## Branches:

**Euro Accessories Ltd (Head Office)**  
Units 1 - 3 Shannon Industrial Estate  
Lodge Road  
Sandbach  
Cheshire  
CW11 3HP  
t. 0044 1270 90 20 20  
f. 0044 1270 76 46 59  
e. [info@euroacc.co.uk](mailto:info@euroacc.co.uk)

**Euro Accessories Ltd (Southern)**  
Unit 3, Stewart Road  
Kingsland Business Park  
Basingstoke  
Hampshire  
RG24 8NF  
t. 0044 118 981 95 22  
f. 0044 118 981 90 17  
e. [basingstoke@euroacc.co.uk](mailto:basingstoke@euroacc.co.uk)

**Euro Accessories Ltd (Ireland)**  
Strokestown Road  
Roosky  
Co. Roscommon  
N41 XW59  
Rep. of Ireland  
t. 00353 71 96 387 96  
e. [sales@euroacc.ie](mailto:sales@euroacc.ie)



## Euro Accessories Product Range:

Plastic, Concrete & Wire Spacers  
Slab Accessories  
Magnet Systems  
Cast-in Channel  
Precast Accessories  
Screed Rails  
TJEP Rebar Systems

Reinforcement Continuity Systems  
Formwork Systems & Accessories  
Piling Accessories  
Lifting & Fixing Systems  
Double Walling Accessories  
Chemicals & Sprayers  
BAG Column Formers