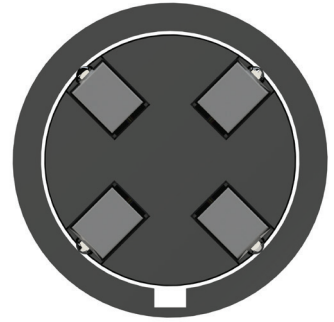


Mini Probe



AM - Spring Only

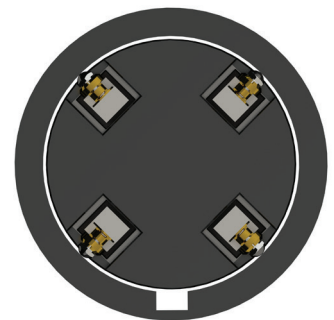
- ▶ ± 0.25 & ± 0.5 mm measuring ranges
- ▶ Half Bridge Only
- ▶ Excellent repeatability in both planes of operation
- ▶ Strong frame enables rotation in bores
- ▶ Various tip options
- ▶ Compact size
- ▶ Simple installation



The Mini Probe is a compact, low profile transducer that is ideal for measurement in confined spaces, such as bores. The transducer is based on a parallel spring structure that ensures excellent repeatability over a long working life, even when rotated in bores that have key slots or lubrication ports.

A Tungsten Carbide contact tip is fitted as standard, but a selection of customer replaceable tips with an M2 thread is available for special applications.

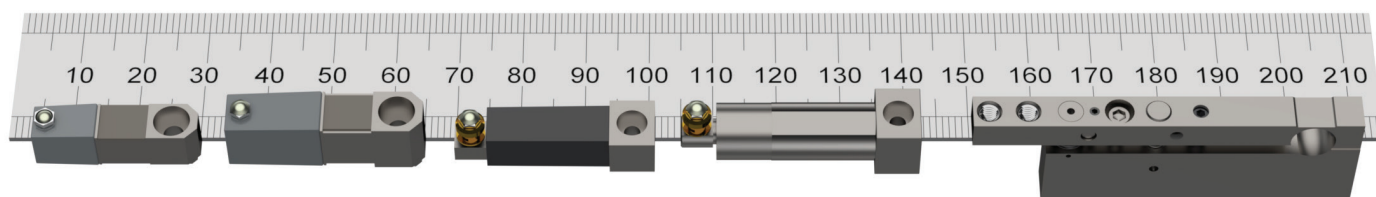
Repeatability depends on the alignment of the mini probe whether on axis or cross axis as shown in the diagram.



Application: Check Camshaft Bearings and Alignment

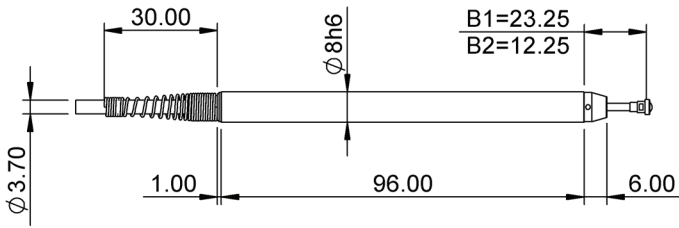
Technical Specifications

Products				
Spring Push	AM/0.25/S		AM/0.5/S	
Measurement Performance				
Measurement Range (mm)	±0.25		±0.5	
Linearity %FSO	1.0			
Repeatability (µm)	On Axis	Cross Axis	On Axis	Cross Axis
Range: 0-100 µm nominal	0.1	0.1	0.1	0.1
Range: 100-250 µm nominal	0.25	0.15	0.1	0.1
Range: 250-500 µm nominal	0.5	0.25	0.15	0.15
Range: 500-1000 µm nominal	N/A	N/A	0.3	0.2
Resolution (µm)	Depends on electronics			
Pre Travel (mm)	0.01 to 0.02		0.015 to 0.025	
Post Travel (mm) (Min)	0.07		0.07	
Tip Force (N) at Middle of Range ±20%	0.85		0.85	
Temperature Coefficient %FS/°C	0.08		0.08	
Environmental				
Sealing for Probe	IP65			
Storage Temperature (°C)	-20 to +80			
Probe Operating Temperature with Gaiter (°C)	+5 to +80			
Shock	Do not subject to excessive shock - follow instructions when installing and adjusting			
Material				
Probe Body	Steel			
Probe Tip (options)	Ruby, Silicon Nitride, Tungsten Carbide			
Gaiter	Fluroelastomer			
Cable	PUR			
Electrical				
Operating Frequency	13			
Load (kΩ)	2			
Operating Voltage rms	3			
Plugged Sensitivity mV/V/mm (+/- 0.5%)	76			
Minimum Cable Bend Radius mm				
Static (fixed installation)	5			
Dynamic (continuous flex)	12.5			

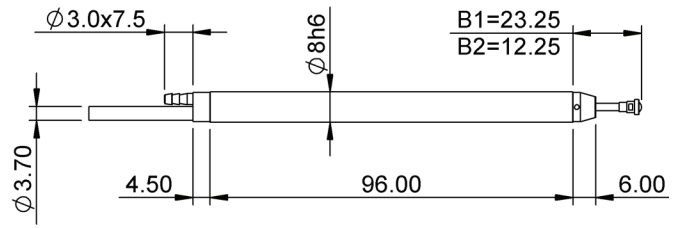


Transducer Dimensions

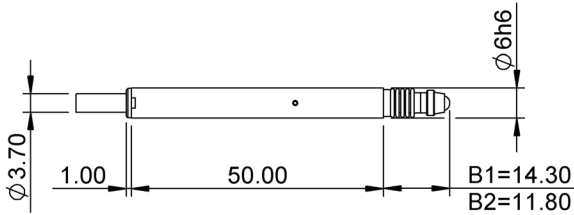
Ultra Feather Touch Spring Push (AW/S)



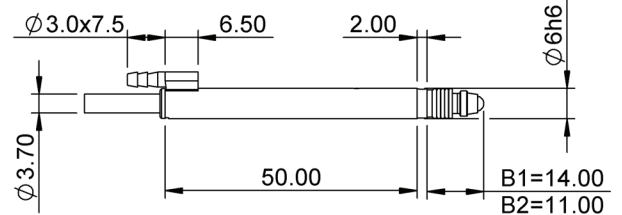
Ultra Feather Touch Pneumatic Push/Vacuum Retract (AW/P / AW/V)



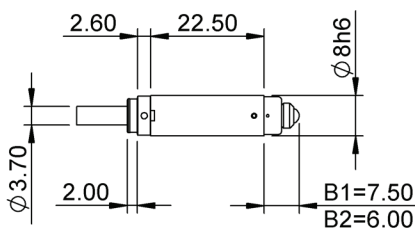
6mm Diameter Body Spring Push (A6G/S)



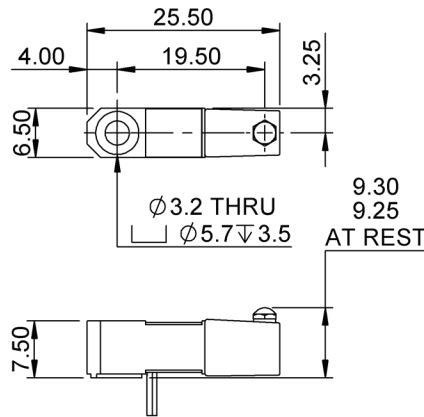
6mm Diameter Body Gaiter Independent Pneumatic Push (A6J/P)



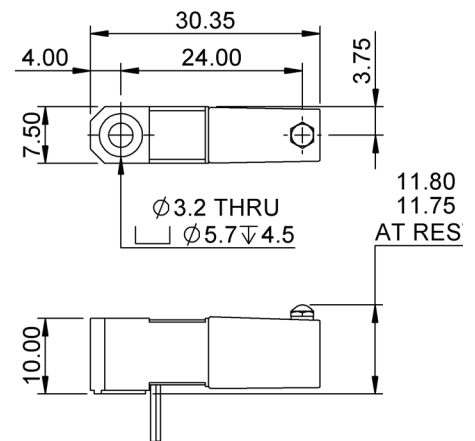
Miniature Spring Push (AX/0.5/S)



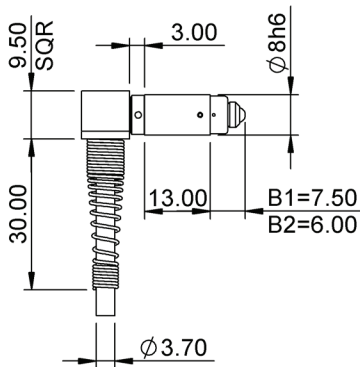
Mini Probe (AM/0.25/S)



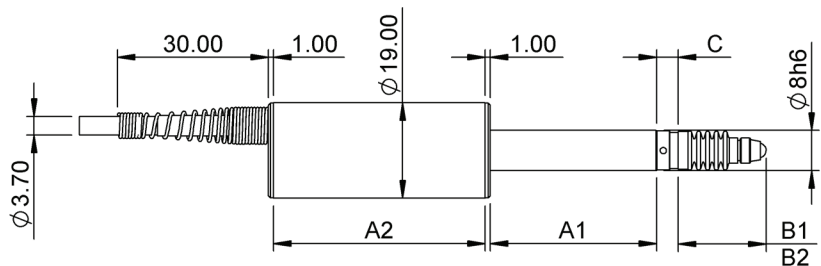
Mini Probe (AM/0.5/S)



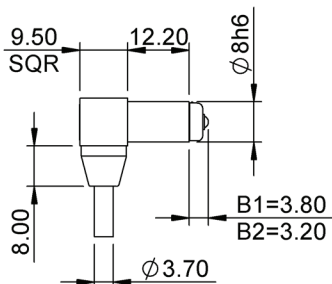
Miniature Spring Push (AXR/0.5/S)



G Series Spring Push (VG/IG/WG)



Miniature Spring Push (AX/0.25/S)



	VG/2/S WG/2/S	VG/5/S WG/5/S	VG/10/S WG/10/S	VG/20/S WG/20/S	IG/2/S	IG/5/S	IG/10/S	IG/20/S
A1	28.00	28.00	52.00	92.00	33.00	33.00	57.00	97.00
A2	47.00	47.00	47.00	47.00	42.00	42.00	42.00	42.00
B1	16.00	20.00	27.50	47.00	16.00	20.00	27.50	47.00
B2	13.00	14.00	16.50	26.00	13.00	14.00	16.50	26.00
C	3.75*	4.25*	4.25*	3.00*	3.75*	4.25*	4.25*	3.00*