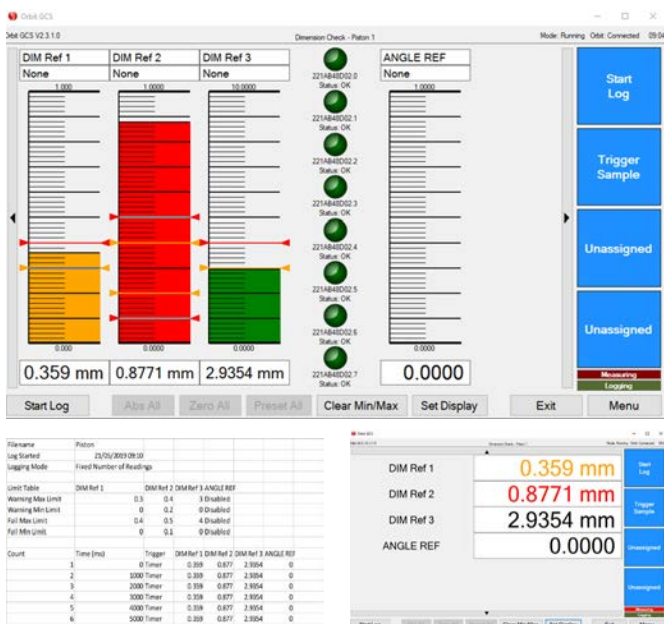
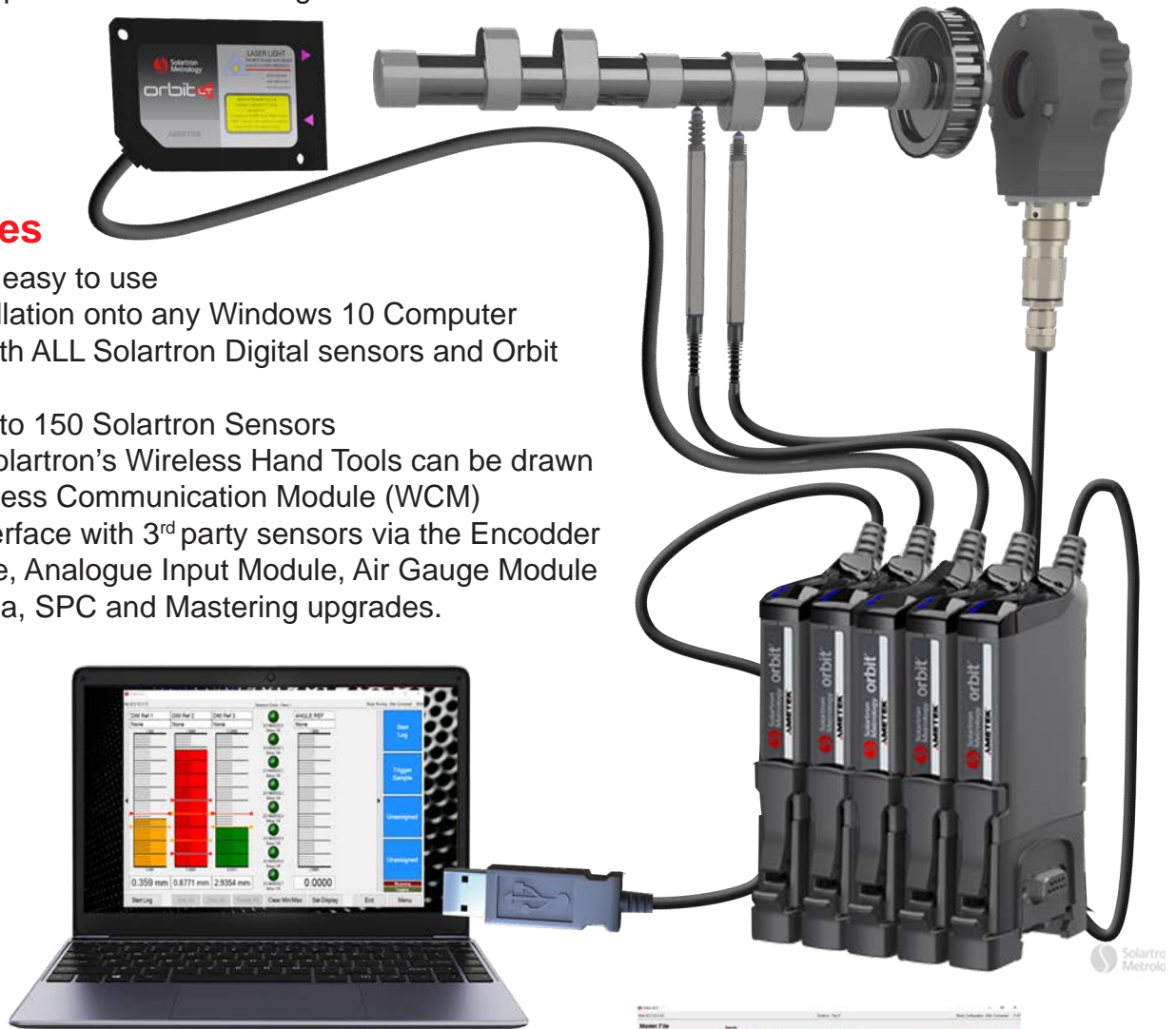


Gauge Computer Software GCS

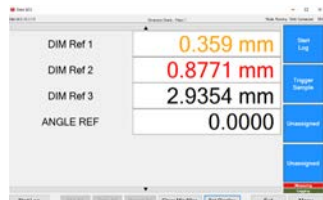
Orbit GCS is an advanced gauging software built for the Orbit Network. It can be used to monitor inline and post process manufacturing dimensions and record measurement data.

Key features

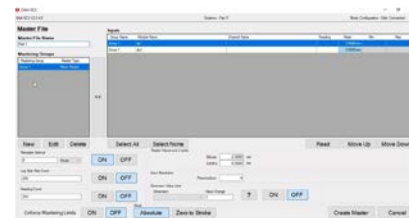
- ▶ Flexible and easy to use
- ▶ Simple installation onto any Windows 10 Computer
- ▶ Functions with ALL Solartron Digital sensors and Orbit Modules
- ▶ Interface up to 150 Solartron Sensors
- ▶ Data from Solartron's Wireless Hand Tools can be drawn via the Wireless Communication Module (WCM)
- ▶ GCS will interface with 3rd party sensors via the Encoder Input Module, Analogue Input Module, Air Gauge Module
- ▶ Math Formula, SPC and Mastering upgrades.



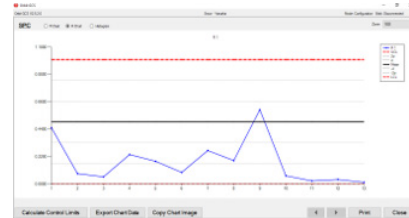
Data output



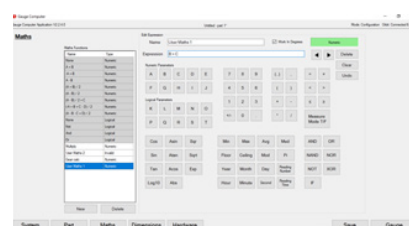
Optional DRO display



Mastering Upgrade (Monitors the quality of a gauge)



SPC Upgrade (Includes Histograms, calculations for Upper Control Limit, Lower Control Limit, Cpk, Ppk and more)



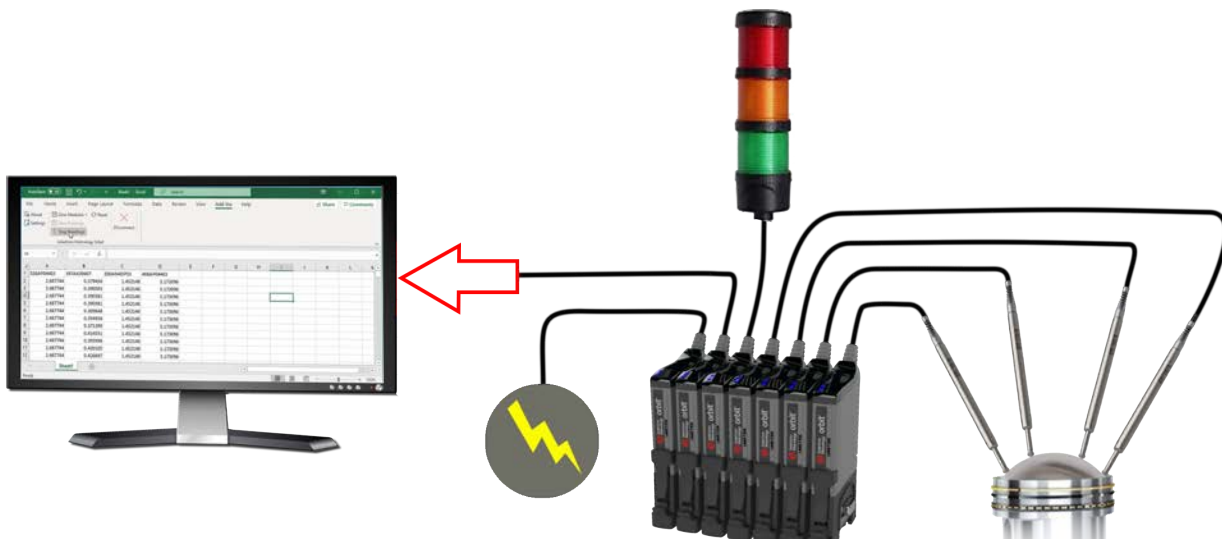
Upgrade with Formula Building

Excel Add In Software Pack

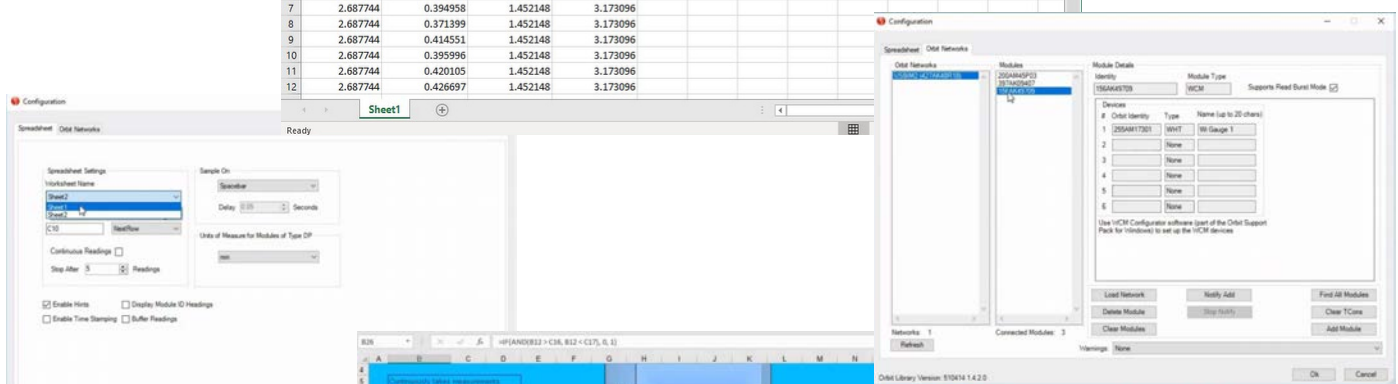
The Excel Add-In is a free, downloadable software pack that can be used to output Orbit readings into a spreadsheet.

Key features

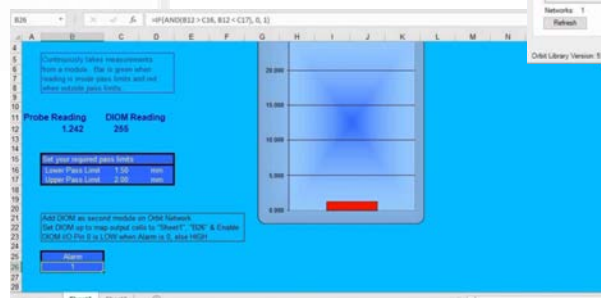
- ▶ Simple installation onto any Windows 10 Computer with minimum Excel 2007
- ▶ Runs with USB, RS232, Ethernet TCP/IP and Wireless Interfaces
- ▶ Functions with all Solartron Digital Sensors
- ▶ Pull in Wi Gauge readings via the Wireless Connection Module
- ▶ Functions with Digital Input Output Module, Analog Interface Module and more
- ▶ Programming Examples included
- ▶ Online training videos are available



	A	B	C	D	E	F	G	H	I	J	K	L	M
1	526AP04403	397AK09407	200AM45P03	468AP04403									
2	2.687744	0.379456	1.452148	3.173096									
3	2.687744	0.390503	1.452148	3.173096									
4	2.687744	0.390381	1.452148	3.173096									
5	2.687744	0.390381	1.452148	3.173096									
6	2.687744	0.389648	1.452148	3.173096									
7	2.687744	0.394958	1.452148	3.173096									
8	2.687744	0.371399	1.452148	3.173096									
9	2.687744	0.414551	1.452148	3.173096									
10	2.687744	0.395996	1.452148	3.173096									
11	2.687744	0.420105	1.452148	3.173096									
12	2.687744	0.426697	1.452148	3.173096									



Easy Configuration Screen



Programming Examples