

Orbit® Accessories and Power Supplies

Power Supplies (PSIM)

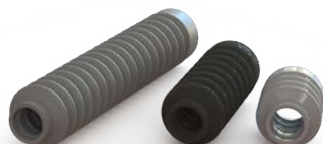


Technical Specifications						
Product		AC PSIM	AC PSIM/24/5	DC PSIM	DC PSIM/24/5	Aux AC PSIM/24
Primary Output	VDC	5	5	5	5	24
	Current (A)	1.8	1.8	1.8	1.8	1.0
Secondary Output	VDC	None	24 (Note 1)	None	24 (Note 1)	None
	Current (A)	None	1.0	None	(Note 2)	None
Max No Of Orbit® Modules		31	31	31	31	(Note 3)
Supply Voltage	VAC	100 to 240	100 to 240	N/A	N/A	100 to 240
	VDC	N/A	N/A	10 to 30	10 to 30	N/A
Supply Frequency	Hz	50-60	50-60	DC	DC	50-60
Supply Connection (Note 4)		IEC320 Plug		2 m cable	2 m cable	IEC320 Plug

Probe Accessories

Replacement Gaiters

Gaiters can be replaced when damaged. Only pneumatic push probes require gaiter rings.



Environmental	
Sealing	IP43 for Module and TCON
Storage Temperature °C	-20 to +70
Operating Temperature °C	0 to 60
EMC Emissions	EN61000-6-3
EMC Immunity	EN61000-6-2
Weight and Dimensions	Standard Orbit® Module

- ▶ Note 1: 24 V output of DC PSIM will track the DC input
- ▶ Note 2: 24 V current depends on external supply
- ▶ Note 3: The Aux AC PSIM only supplies 24 V auxiliary power for products that require additional 24 V in addition to the standard 5 V, these PSIMs do not power the Orbit® Network
- ▶ Note 4: The country specific mains cable is supplied when ordering

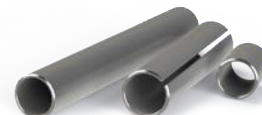
Retrofit Right Angle Adaptor

For use with spring push gauging probes. Part Number: 203224



Imperial Adaptor Sleeves

Adapter Sleeves can be used to increase the body diameter of 8 mm sensors to 9.512 (3/8"). Available in lengths from 12 to 127 mm. Available with or without a split.



Clamping Collet

For use with all 8 mm diameter probes. The clamping collet distributes the clamping forces evenly around the probe body. Using the supplied grub screw, the probe can be loosened while holding the collet in place.

Part number: 806466-SX (10 mm)
805048-SX (9.5 mm)

