

SSM/SSM2 SEALED S-TYPE LOAD CELL (US & METRIC)

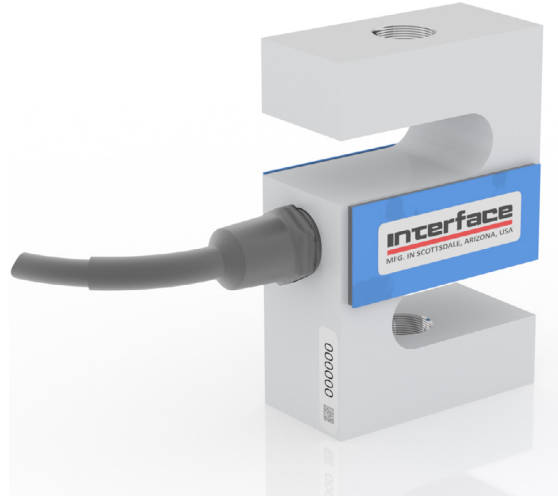
FEATURES & BENEFITS

- Proprietary Interface temperature compensated strain gages
- Environmentally sealed
- 0.02% non-repeatability
- 0.0008%/°F (0.0015%/°C) temp. effect on output
- 0.025% creep
- Tension and compression

SPECIFICATIONS

ACCURACY – (MAX ERROR)				
Nonlinearity – %FS		±0.05		
Hysteresis – %FS		±0.03		
Non-repeatability – %RO		±0.02		
Creep, in 20 min – %		±0.025		
TEMPERATURE				
Compensated Range	°F	0 to +150		
	°C	-15 to +65		
Operating Range	°F	-65 to +200		
	°C	-55 to +90		
Effect on Output – %MAX	°F	±0.0008		
	°C	±0.0015		
Effect on Zero – %RO MAX	°F	±0.0015		
	°C	±0.0027		
ELECTRICAL				
Rated Output – mV/V (Nominal)		3		
Zero Balance – %RO		±1		
Bridge Resistance – Ohm (Nominal)		350		
Excitation Voltage – VDC MAX		15		
Insulation Resistance – Megohm		> 5000		
MECHANICAL				
Calibration		Tension		
Safe Overload – % CAP		150		
NATURAL FREQUENCY/DEFLECTION				
lbf	N	Deflection		Nat. Freq. (Hz)
		in	mm	
50	200	0.003	0.08	1500
100	500	0.004	0.1	1850
150	500	0.004	0.1	1850
250	1K	0.006	0.15	2350
500	2K	0.005	0.13	2150
750	N/A	0.005	0.13	2350
1K	5K	0.005	0.13	3350
2K	10K	0.005	0.13	2400
3K	N/A	0.005	0.13	3000
5K	20K	0.005	0.13	2520
Material	50 - 1K lbf	Aluminum		
	200 - 5K N			
	2K - 5K lbf	Alloy steel		
	10K - 20K N			

STANDARD CONFIGURATION



MODEL SSM/SSM2 (Shown)

OPTIONS

- PC04E-10-6P connector on load cell body (SSM-500 lbf / SSM-2 kN and above)
- Standardized output
- Special temperature range
- Cable length
- Transducer Electronic Data Sheets (TEDS)
- Add connector to cable

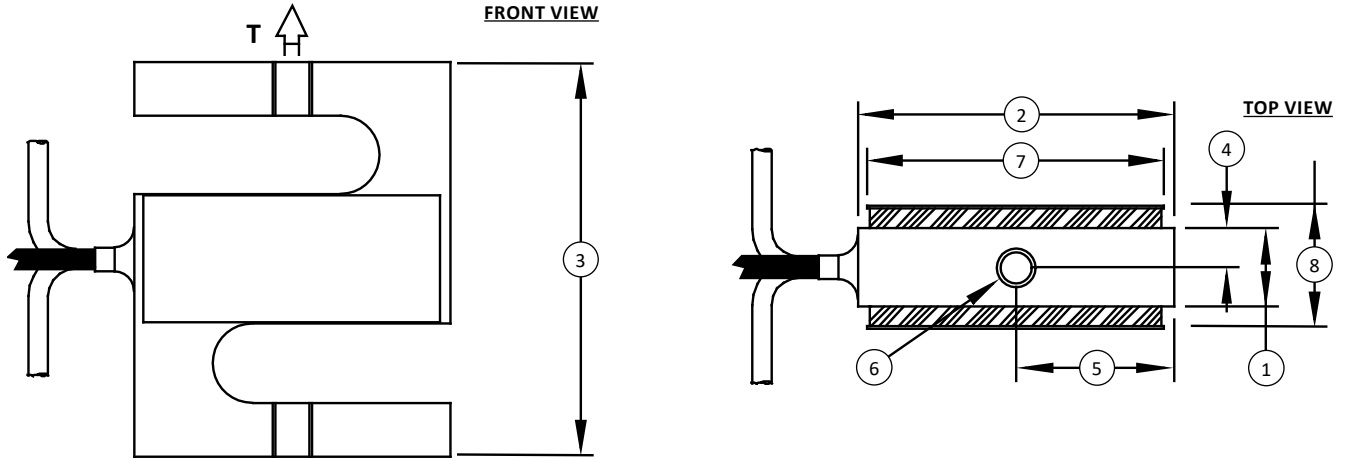
ACCESSORIES

- Load button
- Instrumentation
- Mounting hardware

CONNECTOR OPTIONS

- 10 ft (3 m) integral cable

SSM/SSM2 SEALED S-TYPE LOAD CELL (US & METRIC)



Notes:
 * T indicates tension load direction / primary axis

DIMENSIONS

See Drawing	MODEL									
	SSM						SSM2			
	CAPACITY									
	U.S. (lbf)	Metric (N)	U.S. (lbf)	Metric (N)	U.S. (lbf)	Metric (N)	U.S. (lbf)	Metric (N)	U.S. (lbf)	Metric (N)
	50	200	100, 150, 250	500, 700, 1000	500, 750, 1K, 2K, 3K	2K, 5K, 10K	5K	20K	5K, 10K	25K, 50K
in	mm	in	mm	in	mm	in	mm	in	mm	
(1)	0.50	12.7	0.50	12.7	1.00	25.4	1.50	38.1	1.48	37.6
(2)	2.00	50.8	2.00	50.8	2.00	50.8	2.50	63.5	2.98	75.7
(3)	2.50	63.5	2.50	63.5	3.00	76.2	3.50	88.9	3.98	101.1
(4)	0.25	6.40	0.25	6.40	0.50	12.7	0.75	19.1	0.74	18.8
(5)	1.00	25.4	1.00	25.4	1.00	25.4	1.25	31.8	1.49	37.8
(6)	¼-28 UNF-2B	M6 x 1-6H	¼-28 UNF-2B	M6 x 1-6H	½-20 UNF-2B	M12 x 1.75-6H	¾-18 UNF-2B	M16 x 2-6H	¾-16 UNF-2B	M20 x 1.5-6H
(7)	1.88	47.8	1.88	47.8	1.88	47.8	2.38	60.5	2.88	73.2
(8)	0.82	20.8	0.72	18.3	1.22	31.0	1.75	44.5	1.76	44.8