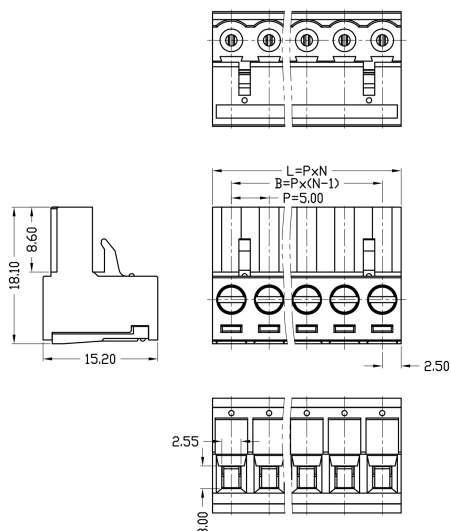


VSP001-5.0



ORDER CODE

| | | | | | | |
|-------------------|-------------------------|--|---------------------------|----|---|-----|
| VSP001-5.0 | - | XXP | - | 1Y | - | 00A |
| Serie | no. of poles 02 ~24P | pitch /color 1 = single pitch 2 = double pitch | special A = customized | | | |
| | | Y: | | | | |
| | | 1 = green | 6 = red | | | |
| | | 2 = blue | 7 = transparent | | | |
| | | 3 = black | 8 = white | | | |
| | | 4 = grey | 9 = yellow | | | |
| | | 5 = orange | Y = mixed (on request) | | | |



TECHNICAL DATA

| | | | |
|--|-----------------------------|-----|-----|
| Test Standrad | IEC 60998-2-1 / UL 1059 | | |
| Pitch [mm] | 5.0 | | |
| No. of Pols | 02 ~ 24 P | | |
| IEC 60998-2-1 | | | |
| Rated Insulation Voltage [V] | 320 | | |
| Rated Current [A] | 20 | | |
| Rated Connection Capacity (Solid / standed) [mm] | 2.5. | | |
| Surge Voltage Category Pollution Degree/ Material ₂ Group | III / 2 / I | | |
| Frequente Voltage [V] | AC 2500V 1Minute | | |
| Rated Surge Voltage [V] | 4000 | | |
| Rated Torque | 0.5 | | |
| UL 1059 | | | |
| Use Group | B | C | D |
| Rated Insulation Voltage [V] | 300 | ./. | 300 |
| Rated Current [A] | 16 | ./. | 10 |
| Rated Connection Capacity (Solid / standed) [AWG] | 28 ~ 12 | | |
| Rated Tourque [N.m] | 4.43 | | |
| OTHER DATA | | | |
| Ambient Temperature [°C] | -40°C ~ +105°C | | |
| Stripping length | 7mm | | |
| Plastic Material Imflammability Class | PA66 UL94 V-2 | | |
| Screw Specification Material/ Plating | Steel / Zn plated | | |
| Conductor Material / Plating | Copper Alloy tin plated | | |
| Clamp/ plating | Phosphor bronze / Ni plated | | |