

Ossa TR280i Transmission Removal & Installation General Overview

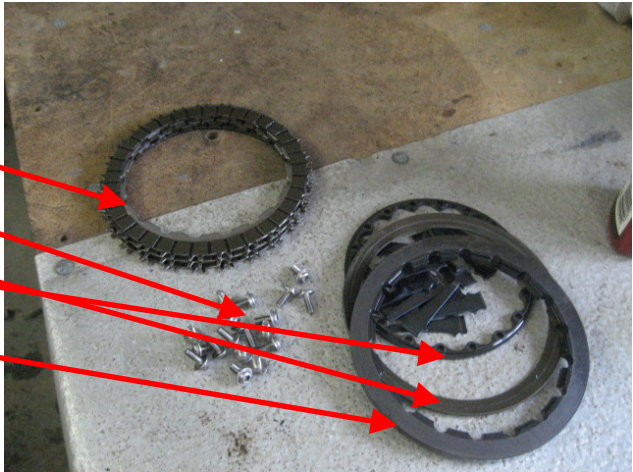
Remove counter shaft sprocket, sprocket guard, chain and shift lever. (not pictured)
Make sure the transmission is in gear.

Remove clutch cover. Move the clutch cover out of the way and place the end of the kick start lever in the skid plate. Take care not to loose the clutch bearing, bushing and the kick start shaft shim.

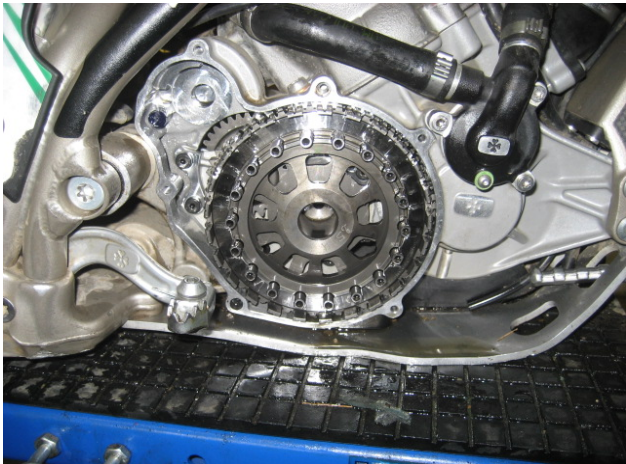
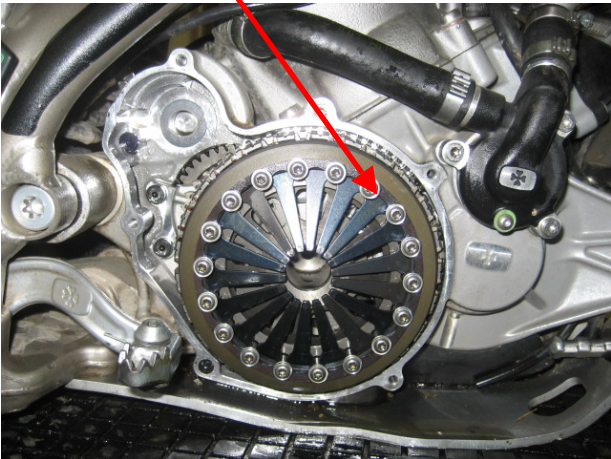


Remove:

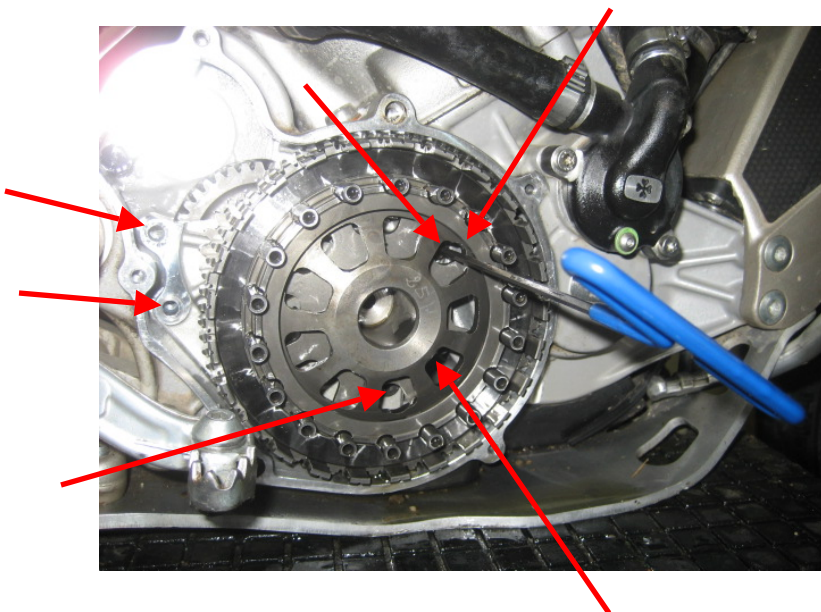
- clutch pack
- 18 clutch screws.
- clutch spring,
- spring retainer
- finger retainer
- .Fingers



Below is what it looks like ready to remove transmission screws.



Remove 5 transmission screws using a flex 3mm hex. You will probably have to drift each screw to release the blue lock tight. You will have to rotate the the clutch gear to access the three inner screws. Take note of the half moon cut out on the clutch inner casing to allow the screws to be pulled from the transmission.



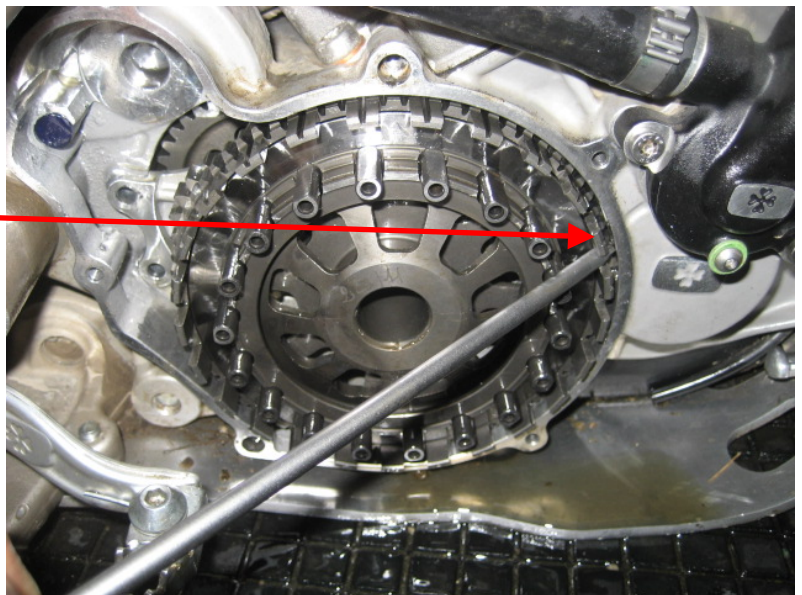
Make sure you have the transmission in gear. Tap the counter shaft with a soft mallet. The transmission will slide out as pictured.





To install, as you slide the transmission in make sure the clutch gear lines up with the crank gear in this area. Just rock it back and forth to fit the gears. Don't force it.

Install transmission screws, clutch assembly, counter shaft sprocket, etc in reverse order.



Always refer to the Ossa Workshop Manual.