









Hunt ID:5098-CO-S-C-1395-062-ElkMDeer-DGEW2AYRI-O1K-IM1J-Trophy Area

If you aren't a trophy hunter for elk and big Mule Deer, don't waste your time. This is a Colorado Trophy area that you can do a Semi-Guided DIY hunt for animals that look like they came out of Jurassic Park!

Note: This cabin is for hunting in **GMU061** which is where it is located or hunting GMU062 which is only 3 miles away. This is a valuable time to look at your current points for deer and elk and if you can draw in the trophy unit in GMU061 any season here is your chance. If you can't then it is possible to draw in GMU062 and build points at the same time. This cabin along with another in GMU062 can be used for hunting either location/unit/GMU.

If you are licensed for the trophy unit **GMU061** for everything from September Archery and Muzzleloader to the 4 rifle seasons you can basically hunt right out your front door. This is

designated as a Trophy Unit with restrictions as to how many elk and deer licenses that can be given out each year. You will be hunting on the famous Uncompahgre Plateau and National Forest. Well known for deer and elk with this area known for having some of the largest of both. Roads and Trails are all through this area for and ATV or 4wd drive truck. You will need a \$ 15 permit of the ATV of course.

You will be staying in a well-built cabin with almost 1000 square feet with a camping trailer with a snow roof to help with temporary over flow for sleeping, great for about 4 hunters, or a single hunter and 3 hunter helpers. The cabin is extremely warm with 2x6 inch exterior walls and an R-34 insulation value. 3 oversized 2x12 headers sit above 3 special ordered picture windows in the living and dining rooms. A raised water tower holds a 500-gallon water tank for the domestic water supply and below the water tank is where the solar batteries and associated mechanical equipment resides. The cabin contains circuits wired for both A/C and D/C.

There is a sleeping loft located above the kitchen and a bathroom is roughed in and nearly completed. Out buildings include a 12'x14' garage constructed with true 2x4 studs and corrugated metal siding and roof. There is also a very well-kept 27' camper that has been remodeled to accommodate 5 people. A pole supported roof protects the camper from the snow load and provides shade for the covered front porch of the trailer. The Uncompahgre Plateau starts from the Unaweep Canyon near Gateway to the north and stretches southerly toward Delta, Montrose, and Nucla. Bordered to the north by the Colorado River, west by the San Miguel and Dolores Rivers, and east by the Uncompahgre and Gunnison Rivers—the Uncompahgre Plateau stretches about 90 miles and incorporates about 2,290 square miles across 5 counties. Big game hunting on the Plateau is quite good for elk, mule deer and black bear.

It cabin sits on 40 acres of private land but it is adjacent to the national forest on 3 sides. There is no need for private land hunting here. You won't see anyone anyway. The point of it being a trophy unit and requiring hunters to draw license also reflects to the minimal number of hunters even able to hunt the whole unit.

The price per hunter is \$ 2100 and a non-hunting Guest is \$ 1000. This hunt has been discounted down to only \$ 1395 per hunter and only \$395 for each non-hunting guest

You are only 3 miles from Divide Road and **GMU062**. **GMU062** is much easier to draw and can be done so with 0 points and an over the counter bull elk licenses for the archery, 2nd and 3rd season. 1st and 4th bull elk licenses can be easily drawn for the 1st and the 4th seasons, with a point or 2 being required to draw a muzzleloader license.

You will be met at the cabin or in town and caravanned out to the cabin to be introduced to the cabin solar and water issues. In addition you will be given guided instructions of the private property and the National forest, along with where deer and elk are usually seen or taken.

Once you are in you will be given cell phone numbers in case you have a later question.

In the preference requirement page below you will see that either area has all seasons. Also note that in GMU062 you are able to get a point and draw in the same year. There is a large difference

in the number of points that it requires a resident vs a non-resident to draw. This cabling can work for Hunting both GMU's. We also have Cabins right in GMU062 as well.

Draw Stats for Mule Deer

GMU 061	Res	Non- Res	GMU 062	Res	Non- Res
Archery		5 8		1 1	
Muzzle Loader		8 15		3 6	
2 nd Rifle		4 10		1 1	
3 rd Rifle		5 11		2 3	

Draw Stats for Elk

GMU 061	Res	Non- Res	GMU 062	Res	Non- Res
Archery		12 19		x x	
Muzzle Loader		x x		x x	
1 st Rifle E-Sex		19 23		E-Sex 2 nd Choice 2 nd Choice	
2 nd Rifle		x x		OTC OTC	
3 rd Rifle		x x		OTC OTC	
4 th Rifle		x x		E-Sex 2 nd Choice 2 nd Choice	

Would you like to get on THE DISCOUNTED HUNTS PRO-STAFF LIST and see the VOUCHERS, HUNTING PROPERTY LEASES AND SPECIAL DISCOUNTED HUNTS ALONG WITH CANCELLATIONS before they even make the web page? Then contact me by EMAIL: DeerElkBear@GMail.com or 303-776-7528. I will place you on the highly informative list called the Preferred Hunters List or Discounted Hunts Pro-Staff List.

© Copyright Discounted Hunting Adventures LLC

2018 & 2019 BIG GAME SEASON DATES— *finalized in January each year*

Moose	Dec. 15–31	Dec. 15–31
Pronghorn (bucks only)	Sept. 8–23	Sept. 7–29
Pronghorn (either sex)	Aug. 15–31	Aug. 15–31
	Sept. 1–20	Sept. 1–20
Muzzleloader (by draw only)		
Deer/elk/moose	Sept. 8–16	Sept. 14–22
Plains deer (east of I-25, except Unit 140)	Oct. 13–	Oct. 12–20
21 Pronghorn	Sept. 21–	Sept. 21–29
29		
Rifle Deer/Elk/Moose		
Moose	Oct. 1–14	Oct. 1–14
Separate limited elk (1st season)	Oct. 13–	Oct. 12–16
17 Combined (deer/elk) (2nd season)	Oct. 20–	Oct. 19–27
28		Nov. 2–10
	(3rd season) Nov. 3–11	Nov. 13–17
Combined limited (deer/elk) (4th season)	Nov. 14–18	Oct. 26–Nov. 5
Plains deer (east of I-25, except Unit 140)	Oct. 27–Nov.	Dec. 1–14
6 Late plains deer (east of I-25, except Unit 140)	Dec. 1–14	
Rifle Pronghorn (by draw only)	Oct. 6–12	Oct. 5–11

APPLY for Big Game Limited Draw Licenses by Tuesday, April 3, 2018:

- Online at cpw.state.co.us
- By phone— (800) 244-5613

NOTE: Starting this year, you will need an online account to apply for any CPW limited license (including youth), or you can apply by phone. However, you will NOT have to pay for your licenses at the time of application. You will only be charged \$3 per application and a one-time \$10 Habitat Stamp, if applicable. If you draw a license, your credit card on file will be charged.

Visit cpw.state.co.us/CPWshop to find out more and follow the buy and apply links on the website to establish your online account.

Increase Your Opportunity to Hunt Colorado

- Apply for all four choices on your application.
- Check the Leftover Draw option box (elk & deer).
- Hunt with a fall over-the-counter (OTC) license.

Call a Hunt Planner for free personalized assistance, 8 a.m.–5 p.m. (MT) Monday–Friday
(303) 291-PLAN (7526)

Can't hunt this year? Apply for a preference point!

Some units require preference points to draw a license. Applying for a license by species each year can help you build preference points and keep your file active.

Check the *2018 Big Game regulation brochure* for specific details.

PURCHASE Small Game, Fishing, Furbearer, Big Game Over-the-Counter and Leftover Licenses, Annual Park Passes, State Park Camping Reservations and Habitat Stamps:

- Online cpw.state.co.us
- By phone (800) 244-5613
- At Authorized Sales Agents, CPW Offices, and State Parks

Hunting and Fishing Regulation Brochures:

(updated and released annually):

Available online at cpw.state.co.us, at authorized sales agents statewide and at CPW parks and offices.

***Big Game (Deer, Elk, Pronghorn, Bear & Moose)—Mid-February**

***Sheep (Rocky Mountain & Desert Bighorn) &**

Goat—Mid-February Off-Highway Vehicles

(OHV)—Mid-March

Fishing—Mid-March

State Recreation Lands—Late July

Small Game and

Waterfowl—Mid-

August **Small Game**

Walk-In Atlas—Late

August **Mountain**

Lion—Late October

Late Cropland Walk-In Atlas—Late October

***Turkey**—Mid-December

**Regulation brochures are mailed to those who applied for those species the previous year. Nonresidents can request a mailed brochure by phone (303-297-1192).*

2019 Big Game, Sheep and Goat Limited Draw Application Deadline: April 2, 2019

Greg Merriam

Outfitter Business Consultant

The Hunting Consultant with Hunting Connections

Mule Deer Foundation

Discounted Hunts LLC

Outdoor Writers LLC©

Western State Draw Consultant

Pro-Staff Western Powders makers of the famous Blackhorn209 Mz Loader Powder

Pro-Staff Dead Down Wind Scent Products®

Pro-Staff Benchmaster Shooting Accuracy Products®

Pro-Staff Montana Powders Blackhorn209®

1204 Button Rock Drive

Longmont, Co 80504

303-776-7528 Voice

303-746-1214 Cell Phone

Email: DeerElkBear@gmail.com

Webpage DiscountedHunts.Net



An American Company and Proud of it



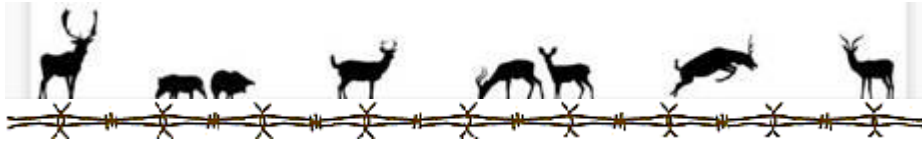
© Copyright Discounted Hunting Adventures llc

[Email: DeerElkBear@gmail.com](mailto:DeerElkBear@gmail.com)

[Web Page: https://www.discountedhunts.net](https://www.discountedhunts.net)

Web Page for Vouchers [This is the Link to the land Owner Voucher List](#)

[This is Antelope Hunting info](#) [This is Mule Deer Hunting info](#)
[This is Elk Hunting info](#) [This is Whitetail Deer Hunting info](#)



[This is the Link to the land Owner Voucher List](#)

We accept



Bless the soldiers that risk their lives to protect this great country we live in and keep us safe from those that wish us harm.

Hunts averaging 10% to 45% off available just ask we build hundreds of happy hunters in 28 states and Canada every year with Elk, Whitetail Deer, Mule Deer, Bear, Moose, sheep, exotics, and even hogs. All hunts subject to license availability and on a first come first serve basis.