

M-Press Fittings

The Professionals Choice



Product List
September
2023

CELEBRATING 10 YEARS

CELEBRATING 10 YEARS

CELEBRATING 10 YEARS

CELEBRATING 10 YEARS



Products



AquaGas / WaterGas	4	Stainless Steel Gas	17	Stainless Steel 304 MXL Industry	39
Copper-Press	5	Stainless Steel Industry	20	Carbon Steel	40
Copper Gas	8	Stainless Steel Steam	23	Carbon Steel Industry	43
Copper Industry	10	Stainless Steel 316 MXL	25	HD-Press	46
Copper Steam	12	Stainless Steel 316 MXL Gas	26	Valves	48
Stainless Steel	14	Stainless Steel 316 MXL Industry	27	Pipes	49
		Stainless Steel 304	28	O-Rings	51
		Stainless Steel 304 Gas	31	NovoPress Tools	52
		Stainless Steel 304 Industry	34	M-Press Tools	55
		Stainless Steel 304 MXL	37	Accessories	56
		Stainless Steel 304 MXL Gas	38	T&Cs	57





As press fittings become more and more popular with mechanical contractors and installers within the commercial sector, plumbers too are now beginning to see the benefits of ‘flame free’ jointing.

M-Press supply a range of copper press fittings designed to be used for general hot and cold-water services, heating, potable water, gas and of course solar thermal heating. Our network of domestic distribution ensures that our range of fittings are never far away.

There are more domestic press fitting installs taking place today than ever before.

Training

At M-Press we place a big emphasis on the importance of thorough and effective training to enable you to install our systems correctly and safely. The training covers all aspects of press fittings from the pipe preparation through to understanding and maintaining the press tooling and accessories. We'll cover all of the sizes or we can tailor these to suit you. Certificates are issued upon completion and our courses can be held anywhere that is convenient for you.

Contact us

If you would like more details or would like to arrange a demonstration of our system and tooling, please get in touch with our dedicated customer service team, with experienced sales directors always on hand to answer any questions.

General Enquiries:

☎ 01924 491797

✉ info@mpressfittings.co.uk

🌐 www.mpressfittings.co.uk

Orders: order@mpressfittings.co.uk

Technical queries: 07584 453922

AquaGas / WaterGas

Straight Coupling

Dimensions (mm)	Article Number	Box (Piece)	Bag (Piece)
15x15	990001515	150	10
22x22	990002222	80	10
28x28	990002828	50	10



Slip Coupling

Dimensions (mm)	Article Number	Box (Piece)	Bag (Piece)
15x15	990401515	100	2
22x22	990402222	50	2
28x28	990402828	30	2



Bend 90°

Dimensions (mm)	Article Number	Box (Piece)	Bag (Piece)
15x15	992001515	120	10
22x22	992002222	50	10
28x28	992002828	30	5



Bend 90° Ø

Dimensions (mm)	Article Number	Box (Piece)	Bag (Piece)
15x15	992101515	120	10
22x22	992102222	50	10
28x28	992102828	30	5



Bend 45°

Dimensions (mm)	Article Number	Box (Piece)	Bag (Piece)
15x15	992301515	120	10
22x22	992302222	60	10
28x28	992302828	30	5



Bend 45° Ø

Dimensions (mm)	Article Number	Box (Piece)	Bag (Piece)
15x15	992401515	120	10
22x22	992402222	60	10
28x28	992402828	30	5



Straight Male Adapter

Dimensions (mm/inches)	Article Number	Box (Piece)	Bag (Piece)
15 x 1/2"	9901015012	150	10
22 x 3/4"	9901022034	80	10
28 x 1"	9901028100	50	10



Straight Female Adapter

Dimensions (mm/inches)	Article Number	Box (Piece)	Bag (Piece)
15 x 1/2"	9902015012	120	10
22 x 3/4"	9902022034	80	10
28 x 1"	9902028100	50	10



Straight Reducer

Dimensions (mm)	Article Number	Box (Piece)	Bag (Piece)
22x15	990302215	100	10
28x22	990302822	50	10



Socket Reducer Ø

Dimensions (mm)	Article Number	Box (Piece)	Bag (Piece)
22x15	994302215	120	10
28x15	994302815	80	10
28x22	994302822	60	10



Endcap

Dimensions (mm)	Article Number	Box (Piece)	Bag (Piece)
15	9941015	60	2
22	9941022	50	2
28	9941028	40	2



Equal Tee

Dimensions (mm)	Article Number	Box (Piece)	Bag (Piece)
15x15x15	99100151515	80	10
22x22x22	99100222222	40	10
28x28x28	99100282828	24	4



Reducing Tee

Dimensions (mm)	Article Number	Box (Piece)	Bag (Piece)
22x15x22	99110221522	40	10
28x15x28	99110281528	30	10
28x22x28	99110282228	30	10



Reducing Tee (End)

Dimensions (mm)	Article Number	Box (Piece)	Bag (Piece)
22x15x15	99115221515	40	10
22x22x15	99115222215	40	10
28x22x22	99115282222	20	5
28x28x22	99115282822	20	5



Insert Adapter

Dimensions (mm/inches)	Article Number	Box (Piece)	Bag (Piece)
15x1/2"	9946015012	40	10
22x3/4"	9946022034	40	10



If you have any questions or to place an order, please contact us:

Straight Coupling

Dimensions (mm)	Article Number	Box (Piece)	Bag (Piece)
15x15	680001515	150	10
22x22	680002222	80	10
28x28	680002828	50	10
35x35	680003535	24	4
42x42	680004242	20	2
54x54	680005454	12	2
66.7x66.7	680006666	3	1
76.1x76.1	680007676	3	1
108x108	6800108108	1	1



Slip Coupling

Dimensions (mm)	Article Number	Box (Piece)	Bag (Piece)
15x15	680401515	100	2
22x22	680402222	50	2
28x28	680402828	30	2
35x35	680403535	20	2
42x42	680404242	12	2
54x54	680405454	8	2



Bend 90°

Dimensions (mm)	Article Number	Box (Piece)	Bag (Piece)
15x15	682001515	120	10
22x22	682002222	50	10
28x28	682002828	30	5
35x35	682003535	12	4
42x42	682004242	8	2
54x54	682005454	6	2
66.7x66.7	682006666	2	1
76.1x76.1	682007676	2	1
108x108	6820108108	1	1



Bend 90° Ø

Dimensions (mm)	Article Number	Box (Piece)	Bag (Piece)
15x15	682101515	120	10
22x22	682102222	50	10
28x28	682102828	30	5
35x35	682103535	12	2
42x42	682104242	8	2
54x54	682105454	6	2
66.7x66.7	682106666	2	1
76.1x76.1	682107676	2	1
108x108	6821108108	1	1



Bend 90° Female

Dimensions (mm/inches)	Article Number	Box (Piece)	Bag (Piece)
15 x 1/2"	6832015012	80	2
22 x 3/4"	6832022034	40	2
28 x 1"	6832028100	24	2



Bend 90° Male

Dimensions (mm/inches)	Article Number	Box (Piece)	Bag (Piece)
15 x 1/2"	6831015012	80	2
22 x 3/4"	6831022034	40	2
28 x 1"	6831028100	24	2



Bend 45°

Dimensions (mm)	Article Number	Box (Piece)	Bag (Piece)
15x15	682301515	120	10
22x22	682302222	60	10
28x28	682302828	30	5
35x35	682303535	20	4
42x42	682304242	12	2
54x54	682305454	6	2
66.7x66.7	682306666	2	1
76.1x76.1	682307676	2	1
108x108	6823108108	1	1



Bend 45° Ø

Dimensions (mm)	Article Number	Box (Piece)	Bag (Piece)
15x15	682401515	120	10
22x22	682402222	60	10
28x28	682402828	30	5
35x35	682403535	20	4
42x42	682404242	12	2
54x54	682405454	6	2
66.7x66.7	682406666	2	1
76.1x76.1	682407676	2	1
108x108	6824108108	1	1



Straight Male Adapter

Dimensions (mm/inches)	Article Number	Box (Piece)	Bag (Piece)
15 x 1/2"	6801015012	150	10
15 x 3/4"	6801015034	100	10
22 x 1/2"	6801022012	100	10
22 x 3/4"	6801022034	80	10
22 x 1"	6801022100	50	10
28 x 3/4"	6801028034	50	10
28 x 1"	6801028100	50	10
35 x 1"	6802035100	50	10
35 x 1 1/4"	6801035114	24	4
42 x 1 1/2"	6801042112	20	4
54 x 2"	6801054200	10	2
66.7 x 2 1/2"	6801066212	2	1
76.1 x 3"	6801076300	2	1



Straight Female Adapter

Dimensions (mm/inches)	Article Number	Box (Piece)	Bag (Piece)
15 x 1/2"	6802015012	120	10
15 x 3/4"	6802015034	80	10
22 x 1/2"	6802022012	100	10
22 x 3/4"	6802022034	80	10
22 x 1"	6802022100	50	10
28 x 3/4"	6802028034	50	10
28 x 1"	6802028100	50	10
35 x 1 1/4"	6802035114	24	4
42 x 1 1/2"	6802042112	20	4
54 x 2"	6802054200	10	2



Copper-Press

Straight Reducer

Dimensions (mm)	Article Number	Box (Piece)	Bag (Piece)
22x15	680302215	100	10
28x22	680302822	50	10



Socket Reducer

Dimensions (mm)	Article Number	Box (Piece)	Bag (Piece)
22x15	684302215	120	10
28x15	684302815	80	10
28x22	684302822	60	10
35x22	684303522	40	10
35x28	684303528	36	4
42x22	684304222	24	4
42x28	684304228	24	4
42x35	684304235	24	4
54x35	684305435	12	2
54x42	684305442	12	2
66.7x28	684306628	3	1
66.7x35	684306635	3	1
66.7x42	684306642	3	1
66.7x54	684306654	3	1
76.1x35	684307635	3	1
76.1x42	684307642	3	1
76.1x54	684307654	3	1
76.1x66.7	684307666	3	1
108x66.7	684310866	1	1
108x76.1	684310876	1	1



Endcap

Dimensions (mm)	Article Number	Box (Piece)	Bag (Piece)
15	6841015	2	2
22	6841022	2	2
28	6841028	2	2
35	6841035	2	2
42	6841042	2	2
54	6841054	2	2
66.7	6841066	2	2



Wallplate

Dimensions (mm/inches)	Article Number	Box (Piece)	Bag (Piece)
15 x 1/2"	6834015012	50	2



Equal Tee

Dimensions (mm)	Article Number	Box (Piece)	Bag (Piece)
15 x 15 x 15	68100151515	80	10
22 x 22 x 22	68100222222	40	10
28 x 28 x 28	68100282828	24	4
35 x 35 x 35	68100353535	12	2
42 x 42 x 42	68100424242	8	2
54 x 54 x 54	68100545454	4	1
66.7 x 66.7 x 66.7	68100666666	2	1
76.1 x 76.1 x 76.1	68100767676	1	1
108x108x108	6810108108108	1	1



Reducing Tee

Dimensions (mm)	Article Number	Box (Piece)	Bag (Piece)
22 x 15 x 22	68110221522	40	10
28 x 15 x 28	68110281528	30	10
28 x 22 x 28	68110282228	30	10
35 x 15 x 35	68110351535	16	4
35 x 22 x 35	68110352235	16	4
35 x 28 x 35	68110352835	16	4
42 x 15 x 42	68110421542	12	4
42 x 22 x 42	68110422242	12	4
42 x 28 x 42	68110422842	12	4
42 x 35 x 42	68110423542	10	2
54 x 22 x 54	68110542254	6	1
54 x 28 x 54	68110542854	6	1
54 x 35 x 54	68110543554	6	1
54 x 42 x 54	68110544254	6	1
66.7 x 28 x 66.7	68110662866	2	1
66.7 x 35 x 66.7	68110663566	2	1
66.7 x 42 x 66.7	68110664266	2	1
66.7 x 54 x 66.7	68110665466	2	1
76.1 x 22 x 76.1	68110762276	1	1
76.1 x 28 x 76.1	68110762876	1	1
76.1 x 35 x 76.1	68110763576	1	1
76.1 x 42 x 76.1	68110764276	1	1
76.1 x 54 x 76.1	68110765476	1	1
76.1 x 66.7 x 76.1	68110766676	1	1
108 x 76.1 x 108	6811010876108	1	1



Female Tee

Dimensions (mm/inches)	Article Number	Box (Piece)	Bag (Piece)
15 x 1/2" x 15	68120151215	60	10
22 x 1/2" x 22	68120221222	40	10
22 x 3/4" x 22	68120223422	30	10
28 x 1/2" x 28	68120281228	30	10
28 x 3/4" x 28	68120283428	20	4
35 x 1/2" x 35	68120351235	16	4
42 x 1/2" x 42	68120421242	10	2
54 x 1/2" x 54	68120541254	6	1



Reducing Tee (End)

Dimensions (mm)	Article Number	Box (Piece)	Bag (Piece)
22 x 15 x 15	6811221515	40	10
22 x 22 x 15	6811222215	40	10
28 x 22 x 22	6811282222	20	5
28 x 28 x 22	6811282822	20	5



Tap Connector

Dimensions (mm/inches)	Article Number	Box (Piece)	Bag (Piece)
15 x 1/2"	6807015012	50	10
15 x 3/4"	6807015034	50	10
22 x 3/4"	6807022034	50	10
22 x 1"	6807022100	20	10
28 x 11/4"	6807028114	40	10
35 x 11/2"	6807035112	20	10



If you have any questions or to place an order, please contact us:

Male Copper Union

Dimensions (mm/inches)	Article Number	Box (Piece)	Bag (Piece)
15 x 1/2"	6808015012	10	2
22 x 3/4"	6808022034	10	2
28 x 1"	6808028100	10	2
35 x 1 1/4"	6808035114	10	2
42 x 1 1/2"	6808042112	10	2
54 x 2"	6808054200	10	2



Female Copper Union

Dimensions (mm/inches)	Article Number	Box (Piece)	Bag (Piece)
15 x 1/2"	6809015012	10	2
22 x 3/4"	6809022034	10	2
28 x 1"	6809028100	10	2
35 x 1 1/4"	6809035114	10	2
42 x 1 1/2"	6809042112	10	2
54 x 2"	6809054200	10	2



Copper Union

Dimensions (mm)	Article Number	Box (Piece)	Bag (Piece)
15x15	680911515	10	2
22x22	680912222	10	2
28x28	680912828	10	2
35x35	680913535	10	2
42x42	680914242	10	2
54x54	680915454	10	2



Female Adapter Insert

Dimensions (mm/inches)	Article Number	Box (Piece)	Bag (Piece)
15 x 1/2"	6846015012	100	2
22 x 3/4"	6846022034	80	2



Flange

Dimensions (mm)	Article Number	Box (Piece)	Bag (Piece)
66.7 Bi-metal flange	6840066	6	1
76.1 Bi-metal flange	6840076	6	1
108 Bi-metal flange	6840108	4	1



Straight Coupling

Dimensions (mm)	Article Number	Box (Piece)	Bag (Piece)
15x15	790001515	150	10
22x22	790002222	80	10
28x28	790002828	50	10
35x35	790003535	24	4
42x42	790004242	20	2
54x54	790005454	12	2
66.7x66.7	790006666	12	1
76.1x76.1	790007676	3	1
108x108	7900108108	1	1



Slip Coupling

Dimensions (mm)	Article Number	Box (Piece)	Bag (Piece)
15x15	790401515	100	2
22x22	790402222	50	2
28x28	790402828	30	2
35x35	790403535	20	2
42x42	790404242	12	2
54x54	790405454	8	2



Bend 90°

Dimensions (mm)	Article Number	Box (Piece)	Bag (Piece)
15x15	792001515	120	10
22x22	792002222	50	10
28x28	792002828	30	5
35x35	792003535	12	4
42x42	792004242	8	2
54x54	792005454	6	2
66.7x66.7	792006666	6	1
76.1x76.1	792007676	2	1
108x108	7920108108	1	1



Bend 90° Ø

Dimensions (mm)	Article Number	Box (Piece)	Bag (Piece)
15x15	792101515	120	10
22x22	792102222	50	10
28x28	792102828	30	5
35x35	792103535	12	2
42x42	792104242	8	2
54x54	792105454	6	2
66.7x66.7	792106666	6	1
76.1x76.1	792107676	6	1
108x108	7921108108	1	1



Bend 90° Female

Dimensions (mm/inches)	Article Number	Box (Piece)	Bag (Piece)
15 x 1/2"	7932015012	80	2
22 x 3/4"	7932022034	40	2
28 x 1"	7932028100	24	2



Bend 90° Male

Dimensions (mm/inches)	Article Number	Box (Piece)	Bag (Piece)
15 x 1/2"	7931015012	80	2
22 x 3/4"	7931022034	40	2
28 x 1"	7931028100	24	2



Bend 45°

Dimensions (mm)	Article Number	Box (Piece)	Bag (Piece)
15x15	792301515	120	10
22x22	792302222	60	10
28x28	792302828	30	5
35x35	792303535	20	4
42x42	792304242	12	2
54x54	792305454	6	2
66.7x66.7	792306666	6	1
76.1x76.1	792307676	2	1
108x108	7923108108	1	1



Bend 45° Ø

Dimensions (mm)	Article Number	Box (Piece)	Bag (Piece)
15x15	792401515	120	10
22x22	792402222	60	10
28x28	792402828	30	5
35x35	792403535	20	4
42x42	792404242	12	2
54x54	792405454	6	2
66.7x66.7	792406666	6	1
76.1x76.1	792407676	2	1
108x108	7924108108	1	1



Straight Male Adapter

Dimensions (mm/inches)	Article Number	Box (Piece)	Bag (Piece)
15 x 1/2"	7901015012	150	10
15 x 3/4"	7901015034	100	10
22 x 1/2"	7901022012	100	10
22 x 3/4"	7901022034	80	10
22 x 1"	7901022100	50	10
28 x 3/4"	7901028034	50	10
28 x 1"	7901028100	50	10
35 x 1"	7901035100	24	4
35 x 1 1/4"	7901035114	24	4
42 x 1 1/2"	7901042112	20	4
54 x 2"	7901054200	10	2
66.7x2 1/2"	7901066212	12	2
76.1x3"	7901076300	3	1



Straight Female Adapter

Dimensions (mm/inches)	Article Number	Box (Piece)	Bag (Piece)
15 x 1/2"	7902015012	120	10
15 x 3/4"	7902015034	80	10
22 x 1/2"	7902022012	100	10
22 x 3/4"	7902022034	80	10
22 x 1"	7902022100	50	10
28 x 3/4"	7902028034	50	10
28 x 1"	7902028100	50	10
35 x 1 1/4"	7902035114	24	4
42 x 1 1/2"	7902042112	20	4
54 x 2"	7902054200	10	2



Straight Reducer

Dimensions (mm)	Article Number	Box (Piece)	Bag (Piece)
22x15	790302215	100	10
28X22	790302822	50	10



Socket Reducer

Dimensions (mm)	Article Number	Box (Piece)	Bag (Piece)
22x15	794302215	120	10
28x15	794302815	80	10
28x22	794302822	60	10
35x22	794303522	40	10
35x28	794303528	36	4
42x22	794304222	24	4
42x28	794304228	24	4
42x35	794304235	24	4
54x35	794305435	12	2
54x42	794305442	12	2
66.7x28	794306628	12	1
66.7x35	794306635	12	1
66.7x42	794306642	12	1
66.7x54	794306654	12	1
76.1x35	794307635	3	1
76.1x42	794307642	3	1
76.1x54	794307654	3	1
76.1x66.7	794307666	3	1
108 x 66.7	794310866	1	1
108 x 76.1	794310876	1	1



Endcap

Dimensions (mm)	Article Number	Box (Piece)	Bag (Piece)
15	7941015	2	2
22	7941022	2	2
28	7941028	2	2
35	7941035	2	2
42	7941042	2	2
54	7941054	2	2
66.7	7941066	2	2



Wallplate

Dimensions (mm/inches)	Article Number	Box (Piece)	Bag (Piece)
15 x 1/2"	7934015012	50	2



Reducing Tee (End)

Dimensions (mm)	Article Number	Box (Piece)	Bag (Piece)
22 x 15 x 15	7911221515	40	10
22 x 22 x 15	7911222215	40	10
28 x 22 x 22	7911282222	20	5
28 x 28 x 22	7911282822	20	5



Equal Tee

Dimensions (mm)	Article Number	Box (Piece)	Bag (Piece)
15x15x15	79100151515	80	10
22x22x22	79100222222	40	10
28x28x28	79100282828	24	4
35x35x35	79100353535	12	2
42x42x42	79100424242	8	2
54x54x54	79100545454	4	1
66.7x66.7	79100666666	4	1
76.1x76.1	79100767676	4	1
108x108x108	7910108108108	4	1



Female Tee

Dimensions (mm/inches)	Article Number	Box (Piece)	Bag (Piece)
15 x 1/2" x 15	79120151215	60	10
22 x 3/4" x 22	79120223422	30	10
22 x 1/2" x 22	79120221222	40	10
28 x 3/4" x 28	79120283428	20	4
28 x 1/2" x 28	79120281228	30	10
35 x 1/2" x 35	79120351235	16	4
42 x 1/2" x 42	79120421242	10	2
54 x 1/2" x 54	79120541254	6	1



Reducing Tee

Dimensions (mm)	Article Number	Box (Piece)	Bag (Piece)
22 x 15 x 22	79110221522	40	10
28 x 15 x 28	79110281528	30	10
28 x 22 x 28	79110282228	30	10
35 x 15 x 35	79110351535	16	4
35 x 22 x 35	79110352235	16	4
35 x 28 x 35	79110352835	16	4
42 x 15 x 42	79110421542	12	4
42 x 22 x 42	79110422242	12	4
42 x 28 x 42	79110422842	12	4
42 x 35 x 42	79110423542	10	2
54 x 22 x 54	79110542254	6	1
54 x 28 x 54	79110542854	6	1
54 x 35 x 54	79110543554	6	1
54 x 42 x 54	79110544254	6	1
66.7 x 28 x 66.7	79110662866	2	1
66.7 x 35 x 66.7	79110663566	2	1
66.7 x 42 x 66.7	79110664266	2	1
66.7 x 54 x 66.7	79110665466	2	1
76.1 x 22 x 76.1	79110762276	1	1
76.1 x 28 x 76.1	79110762876	1	1
76.1 x 35 x 76.1	79110763576	1	1
76.1 x 42 x 76.1	79110764276	1	1
76.1 x 54 x 76.1	79110765476	1	1
76.1 x 66.7 x 76.1	79110766676	1	1
108 x 76.1 x 108	7911010876108	1	1



Flange

Dimensions (mm)	Article Number	Box (Piece)	Bag (Piece)
66.7 Bi-metal flange	7940066	6	1
76.1 Bi-metal flange	7940076	6	1
108 Bi-metal flange	7940108	4	1



Straight Coupling

Dimensions (mm)	Article Number	Box (Piece)	Bag (Piece)
15x15	880001515	150	10
22x22	880002222	80	10
28x28	880002828	50	10
35x35	880003535	24	4
42x42	880004242	20	2
54x54	880005454	12	2
66.7x66.7	880006666	3	1
76.1x76.1	880007676	3	1
108x108	8800108108	1	1



Slip Coupling

Dimensions (mm)	Article Number	Box (Piece)	Bag (Piece)
15x15	880401515	100	2
22x22	880402222	50	2
28x28	880402828	30	2
35x35	880403535	10	2
42x42	880404242	12	2
54x54	880405454	8	2



Bend 90°

Dimensions (mm)	Article Number	Box (Piece)	Bag (Piece)
15x15	882001515	120	10
22x22	882002222	50	10
28x28	882002828	30	5
35x35	882003535	12	4
42x42	882004242	8	2
54x54	882005454	6	2
66.7x66.7	882006666	2	1
76.1x76.1	882007676	2	1
108x108	8820108108	1	1



Bend 90° Ø

Dimensions (mm)	Article Number	Box (Piece)	Bag (Piece)
15x15	882101515	120	10
22x22	882102222	50	10
28x28	882102828	30	5
35x35	882103535	12	2
42x42	882104242	8	2
54x54	882105454	6	2
66.7x66.7	882106666	2	1
76.1x76.1	882107676	2	1
108x108	8821108108	1	1



Bend 90° Female

Dimensions (mm/inches)	Article Number	Box (Piece)	Bag (Piece)
15 x 1/2"	8832015012	80	2
22 x 3/4"	8832022034	40	2
28 x 1"	8832028100	24	2



Bend 90° Male

Dimensions (mm/inches)	Article Number	Box (Piece)	Bag (Piece)
15 x 1/2"	8831015012	80	2
22 x 3/4"	8831022034	40	2
28 x 1"	8831028100	24	2



Bend 45°

Dimensions (mm)	Article Number	Box (Piece)	Bag (Piece)
15x15	882301515	120	10
22x22	882302222	60	10
28x28	882302828	30	5
35x35	882303535	20	4
42x42	882304242	12	2
54x54	882305454	6	2
66.7x66.7	882306666	2	1
76.1x76.1	882307676	2	1
108x108	8823108108	1	1



Bend 45° Ø

Dimensions (mm)	Article Number	Box (Piece)	Bag (Piece)
15x15	882401515	120	10
22x22	882402222	60	10
28x28	882402828	30	5
35x35	882403535	20	4
42x42	882404242	12	2
54x54	882405454	6	2
66.7x66.7	882406666	2	1
76.1x76.1	882407676	2	1
108x108	8824108108	1	1



Straight Male Adapter

Dimensions (mm/inches)	Article Number	Box (Piece)	Bag (Piece)
15 x 1/2"	8801015012	150	10
15 x 3/4"	8801015034	100	10
22 x 1/2"	8801022012	100	10
22 x 3/4"	8801022034	80	10
22 x 1"	8801022100	50	10
28 x 3/4"	8801028034	50	10
28 x 1"	8801028100	50	10
35 x 1"	8801035100	24	4
35 x 1 1/4"	8801035114	24	4
42 x 1 1/2 "	8801042112	20	4
54 x 2"	8801054200	10	2
66.7 x 2 1/2"	8801066212	2	1
76.1 x 3"	8801076300	1	1



Straight Female Adapter

Dimensions (mm/inches)	Article Number	Box (Piece)	Bag (Piece)
15 x 1/2"	8802015012	120	10
15 x 3/4"	8802015034	80	10
22 x 1/2"	8802022012	100	10
22 x 3/4"	8802022034	80	10
22 x 1"	8802022100	50	10
28 x 3/4"	8802028034	50	10
28 x 1"	8802028100	50	10
35 x 1 1/4"	8802035114	24	4
42 x 1 1/2 "	8802042112	20	4
54 x 2"	8802054200	10	2



Wallplate

Dimensions (mm/inches)	Article Number	Box (Piece)	Bag (Piece)
15 x 1/2"	8834015012	50	2



Flange

Dimensions (mm)	Article Number	Box (Piece)	Bag (Piece)
66.7 Bi-metal flange	8840066	6	1
76.1 Bi-metal flange	8840076	6	1
108 Bi-metal flange	8840108	4	1





Straight Reducer

Dimensions (mm)	Article Number	Box (Piece)	Bag (Piece)
22x15	880302215	100	2
28x22	880302822	50	2



Endcap

Dimensions (mm)	Article Number	Box (Piece)	Bag (Piece)
15	8841015	60	2
22	8841022	50	2
28	8841028	40	2
35	8841035	2	2
42	8841042	2	2
54	8841054	2	2
66.7	8841066	2	2



Male Copper Union

Dimensions (mm/inches)	Article Number	Box (Piece)	Bag (Piece)
15 x 1/2"	8808015012	10	2
22 x 3/4"	8808022034	10	2
28 x 1"	8808028100	10	2
35 x 1 1/4"	8808035114	10	2
42 x 1 1/2"	8808042112	10	2
54 x 2"	8808054200	10	2



Female Copper Union

Dimensions (mm/inches)	Article Number	Box (Piece)	Bag (Piece)
15 x 1/2"	8809015012	10	2
22 x 3/4"	8809022034	10	2
28 x 1"	8809028100	10	2
35 x 1 1/4"	8809035114	10	2
42 x 1 1/2"	8809042112	10	2
54 x 2"	8809054200	10	2



Copper Union

Dimensions (mm)	Article Number	Box (Piece)	Bag (Piece)
15x15	8809115012	10	2
22x22	8809122034	10	2
28x28	8809128100	10	2
35x35	8809135114	10	2
42x42	8809142112	10	2
54x54	8809154200	10	2



Equal Tee

Dimensions (mm)	Article Number	Box (Piece)	Bag (Piece)
15 x 15 x 15	88100151515	80	10
22 x 22 x 22	88100222222	40	10
28 x 28 x 28	88100282828	24	4
35 x 35 x 35	88100353535	12	2
42 x 42 x 42	88100424242	8	2
54 x 54 x 54	88100545454	4	1
66.7 x 66.7 x 66.7	88100666666	2	1
76.1 x 76.1 x 76.1	88100767676	1	1
108x108x108	8810108108108	1	1



Reducing Tee (End)

Dimensions (mm)	Article Number	Box (Piece)	Bag (Piece)
22 x 15 x 15	8811221515	40	10
22 x 22 x 15	8811222215	40	10
28 x 22 x 22	8811282222	20	5
28 x 28 x 22	8811282822	20	5



Socket Reducer

Dimensions (mm)	Article Number	Box (Piece)	Bag (Piece)
22x15	884302215	120	10
28x15	884302815	80	10
28x22	884302822	60	10
35x22	884303522	40	10
35x28	884303528	36	4
42x22	884304222	24	4
42x28	884304228	24	4
42x35	884304235	24	4
54x35	884305435	12	2
54x42	884305442	12	2
66.7x28	884306628	3	1
66.7x35	884306635	3	1
66.7x42	884306642	3	1
66.7x54	884306654	3	1
76.1x35	884307635	3	1
76.1x42	884307642	3	1
76.1x54	884307654	3	1
76.1x66.7	884307666	3	1
108 x 66.7	884310866	1	1
108 x 76.1	884310876	1	1



Reducing Tee

Dimensions (mm)	Article Number	Box (Piece)	Bag (Piece)
22 x 15 x 22	88110221522	40	10
28 x 15 x 28	88110281528	30	10
28 x 22 x 28	88110282228	30	10
35 x 15 x 35	88110351535	16	4
35 x 22 x 35	88110352235	16	4
35 x 28 x 35	88110352835	16	4
42 x 15 x 42	88110421542	12	4
42 x 22 x 42	88110422242	12	4
42 x 28 x 42	88110422842	12	4
42 x 35 x 42	88110423542	10	2
54 x 22 x 54	88110542254	6	1
54 x 28 x 54	88110542854	6	1
54 x 35 x 54	88110543554	6	1
54 x 42 x 54	88110544254	6	1
66.7 x 28 x 66.7	88110662866	2	1
66.7 x 35 x 66.7	88110663566	2	1
66.7 x 42 x 66.7	88110664266	2	1
66.7 x 54 x 66.7	88110665466	2	1
76.1 x 22 x 76.1	88110762276	1	1
76.1 x 28 x 76.1	88110762876	1	1
76.1 x 35 x 76.1	88110763576	1	1
76.1 x 42 x 76.1	88110764276	1	1
76.1 x 54 x 76.1	88110765476	1	1
76.1 x 66.7 x 76.1	88110766676	1	1
108 x 76.1 x 108	8811010876108	1	1



Female Tee

Dimensions (mm/inches)	Article Number	Box (Piece)	Bag (Piece)
15 x 1/2" x 15	88120151215	60	10
22 x 1/2" x 22	88120221222	40	10
22 x 3/4" x 22	88120223422	30	10
28 x 1/2" x 28	88120281228	30	10
28 x 3/4" x 28	88120283428	20	4
35 x 1/2" x 35	88120351235	16	4
42 x 1/2" x 42	88120421242	10	2
54 x 1/2" x 54	88120541254	6	1



Copper Steam

Straight Coupling

Dimensions (mm)	Article Number	Box (Piece)	Bag (Piece)
15x15	660001515	150	10
22x22	660002222	80	10
28x28	660002828	50	10
35x35	660003535	24	4
42x42	660004242	20	2
54x54	660005454	12	2



Slip Coupling

Dimensions (mm)	Article Number	Box (Piece)	Bag (Piece)
15x15	660401515	100	2
22x22	660402222	50	2
28x28	660402828	30	2
35x35	660403535	10	2
42x42	660404242	12	2
54x54	660405454	8	2



Bend 90°

Dimensions (mm)	Article Number	Box (Piece)	Bag (Piece)
15x15	662001515	120	10
22x22	662002222	50	10
28x28	662002828	30	5
35x35	662003535	12	4
42x42	662004242	8	2
54x54	662005454	6	2



Bend 90°Ø

Dimensions (mm)	Article Number	Box (Piece)	Bag (Piece)
15x15	662101515	120	10
22x22	662102222	50	10
28x28	662102828	30	5
35x35	662103535	12	2
42x42	662104242	8	2
54x54	662105454	6	2



Bend 90° Female

Dimensions (mm/inches)	Article Number	Box (Piece)	Bag (Piece)
15 x 1/2"	6632015012	80	2
22 x 3/4"	6632022034	40	2
28 x 1"	6632028100	24	2



Bend 90° Male

Dimensions (mm/inches)	Article Number	Box (Piece)	Bag (Piece)
15 x 1/2"	6631015012	80	2
22 x 3/4"	6631022034	40	2
28 x 1"	6631028100	24	2



Bend 45°

Dimensions (mm)	Article Number	Box (Piece)	Bag (Piece)
15x15	662301515	120	10
22x22	662302222	60	10
28x28	662302828	30	5
35x35	662303535	20	4
42x42	662304242	12	2
54x54	662305454	6	2



Bend 45°Ø

Dimensions (mm)	Article Number	Box (Piece)	Bag (Piece)
15x15	662401515	120	10
22x22	662402222	60	10
28x28	662402828	30	5
35x35	662403535	20	4
42x42	662404242	12	2
54x54	662405454	6	2



Straight Male Adapter

Dimensions (mm/inches)	Article Number	Box (Piece)	Bag (Piece)
15 x 1/2"	6601015012	150	10
15 x 3/4"	6601015034	100	10
22 x 1/2"	6601022012	100	10
22 x 3/4"	6601022034	80	10
22 x 1"	6601022100	50	10
28 x 3/4"	6601028034	50	10
28 x 1"	6601028100	50	10
35 x 1"	6601035100	24	4
35 x 1 1/4"	6601035114	24	4
42 x 1 1/2"	6601042112	20	4
54 x 2"	6601054200	10	2



Straight Female Adapter

Dimensions (mm/inches)	Article Number	Box (Piece)	Bag (Piece)
15 x 1/2"	6602015012	120	10
15 x 3/4"	6602015034	80	10
22 x 1/2"	6602022012	100	10
22 x 3/4"	6602022034	80	10
22 x 1"	6602022100	50	10
28 x 3/4"	6602028034	50	10
28 x 1"	6602028100	50	10
35 x 1 1/4"	6602035114	24	4
42 x 1 1/2"	6602042112	20	4
54 x 2"	6602054200	10	2



If you have any questions or to place an order, please contact us:

Straight Reducer

Dimensions	Article Number	Box (Piece)	Bag (Piece)
22x15	660302215	100	2
28x22	660302822	50	2



Wallplate

Dimensions (mm/inches)	Article Number	Box (Piece)	Bag (Piece)
15 x 1/2"	6634015012	50	2



Socket Reducer

Dimensions (mm)	Article Number	Box (Piece)	Bag (Piece)
22x15	664302215	120	10
28x15	664302815	80	10
28x22	664302822	60	10
35x22	664303522	40	10
35x28	664303528	36	4
42x22	664304222	24	4
42x28	664304228	24	4
42x35	664304235	24	4
54x35	664305435	12	2
54x42	664305442	12	2



Endcap

Dimensions (mm)	Article Number	Box (Piece)	Bag (Piece)
15	6641015		2
22	6641022		2
28	6641028		2
35	6641035		2
42	6641042		2
54	6641054		2



Equal Tee

Dimensions (mm)	Article Number	Box (Piece)	Bag (Piece)
15 x 15 x 15	66100151515	80	10
22 x 22 x 22	66100222222	40	10
28 x 28 x 28	66100282828	24	4
35 x 35 x 35	66100353535	12	2
42 x 42 x 42	66100424242	8	2
54 x 54 x 54	66100545454	4	1



Reducing Tee (End)

Dimensions (mm)	Article Number	Box (Piece)	Bag (Piece)
22 x 15 x 15	6611221515	40	10
22 x 22 x 15	6611222215	40	10
28 x 22 x 22	6611282222	20	5
28 x 28 x 22	6611282822	20	5



Reducing Tee

Dimensions (mm)	Article Number	Box (Piece)	Bag (Piece)
22 x 15 x 22	66110221522	40	10
28 x 15 x 28	66110281528	30	10
28 x 22 x 28	66110282228	30	10
35 x 15 x 35	66110351535	16	4
35 x 22 x 35	66110352235	16	4
35 x 28 x 35	66110352835	16	4
42 x 15 x 42	66110421542	12	4
42 x 22 x 42	66110422242	12	4
42 x 28 x 42	66110422842	12	4
42 x 35 x 42	66110423542	10	2
54 x 22 x 54	66110542254	6	1
54 x 28 x 54	66110542854	6	1
54 x 35 x 54	66110543554	6	1
54 x 42 x 54	66110544254	6	1



Female Tee

Dimensions (mm/inches)	Article Number	Box (Piece)	Bag (Piece)
15 x 1/2" x 15	66120151215	60	10
22 x 1/2" x 22	66120221222	40	10
22 x 3/4" x 22	66120223422	30	10
28 x 1/2" x 28	66120281228	30	10
28 x 3/4" x 28	66120283428	20	4
35 x 1/2" x 35	66120351235	16	4
42 x 1/2" x 42	66120421242	10	2
54 x 1/2" x 54	66120541254	6	1



Stainless Steel

Straight Coupling

Dimensions (mm)	Article Number	Box (Piece)	Bag (Piece)
15 x 15	120001515	150	10
22 x 22	120002222	80	10
28 x 28	120002828	50	10
35 x 35	120003535	24	4
42 x 42	120004242	20	4
54 x 54	120005454	12	2
66.7 x 66.7	120006666	3	1
76.1 x 76.1	120007676	3	1
88.9 x 88.9	120008888	2	1
108 x 108	1200108108	1	1



Slip Coupling

Dimensions (mm)	Article Number	Box (Piece)	Bag (Piece)
15 x 15	120401515	50	2
22 x 22	120402222	50	2
28 x 28	120402828	30	2
35 x 35	120403535	20	2
42 x 42	120404242	20	1
54 x 54	120405454	8	1
66.7 x 66.7	120406666	2	1
76.1 x 76.1	120407676	2	1
88.9 x 88.9	120408888	1	1
108 x 108	1204108108	1	1



Bend 90°

Dimensions (mm)	Article Number	Box (Piece)	Bag (Piece)
15 x 15	122001515	100	10
22 x 22	122002222	50	10
28 x 28	122002828	30	10
35 x 35	122003535	12	4
42 x 42	122004242	8	2
54 x 54	122005454	6	2
66.7 x 66.7	122006666	2	1
76.1 x 76.1	122007676	2	1
88.9 x 88.9	122008888	1	1
108 x 108	1220108108	1	1



Bend 90° Ø

Dimensions (mm)	Article Number	Box (Piece)	Bag (Piece)
15 x 15	122101515	100	10
22 x 22	122102222	50	10
28 x 28	122102828	30	10
35 x 35	122103535	12	4
42 x 42	122104242	8	2
54 x 54	122105454	6	2
66.7 x 66.7	122106666	2	1
76.1 x 76.1	122107676	2	1
88.9 x 88.9	122108888	1	1
108 x 108	1221108108	1	1



Bend 45°

Dimensions (mm)	Article Number	Box (Piece)	Bag (Piece)
15 x 15	122301515	120	10
22 x 22	122302222	60	10
28 x 28	122302828	30	10
35 x 35	122303535	20	4
42 x 42	122304242	12	2
54 x 54	122305454	6	2
66.7 x 66.7	122306666	2	1
76.1 x 76.1	122307676	2	1
88.9 x 88.9	122308888	1	1
108 x 108	1223108108	1	1



Bend 45° Ø

Dimensions (mm)	Article Number	Box (Piece)	Bag (Piece)
15 x 15	122401515	120	10
22 x 22	122402222	60	10
28 x 28	122402828	30	10
35 x 35	122403535	20	4
42 x 42	122404242	12	2
54 x 54	122405454	6	2
66.7 x 66.7	122406666	2	1
76.1 x 76.1	122407676	2	1
88.9 x 88.9	122408888	1	1
108 x 108	1224108108	1	1



Bend 90° Male

Dimensions (mm/inches)	Article Number	Box (Piece)	Bag (Piece)
15 x 1/2"	1231015012	80	2
15 x 3/8"	1231015038	80	2
22 x 3/4"	1231022034	40	2
28 x 1"	1231028100	20	2
35 x 1 1/4"	1231035114	12	2
42 x 1 1/2"	1231042112	8	2
54 x 2"	1231054200	4	1



Bend 90° Female

Dimensions (mm/inches)	Article Number	Box (Piece)	Bag (Piece)
15 x 1/2"	1232015012	80	2
15 x 3/8"	1232015038	80	2
22 x 3/4"	1232022034	40	2
22 x 1/2"	1232022012	40	2
28 x 1/2"	1232028012	20	2
28 x 1"	1232028100	20	2
35 x 1/2"	1232035012	12	2
34 x 1 1/4"	1232035114	12	2



If you have any questions or to place an order, please contact us:

Male Adapter

Dimensions (mm/inches)	Article Number	Box (Piece)	Bag (Piece)
15 x 1/2"	1201015012	100	10
15 x 3/4"	1201015034	100	10
15 x 3/8"	1201015038	100	10
22 x 1/2"	1201022012	100	10
22 x 3/4"	1201022034	80	10
22 x 1"	1201022100	50	10
28 x 3/4"	1201028034	50	10
28 x 1"	1201028100	50	10
35 x 1"	1201035100	24	4
35 x 1 1/4"	1201035114	24	4
42 x 1 1/2"	1201042112	20	4
54 x 2"	1201054200	10	2
66.7 x 2 1/2"	1201066212	2	1
76.1 x 2 1/2"	1201076212	1	1
88.9 x 3"	1201088300	1	1
108 x 4"	1201108400	1	1



Female Adapter

Dimensions (mm/inches)	Article Number	Box (Piece)	Bag (Piece)
15 x 1/2"	1202015012	120	10
15 x 3/4"	1202015034	80	10
15 x 3/8"	1202015038	80	10
22 x 1/2"	1202022012	100	10
22 x 3/4"	1202022034	80	10
22 x 1"	1202022100	50	10
28 x 3/4"	1202028034	50	10
28 x 1"	1202028100	50	10
35 x 1"	1202035100	24	4
35 x 1 1/4"	1202035114	24	4
42 x 1 1/2"	1202042112	20	4
54 x 2"	1202054200	10	2



Endcap

Dimensions (mm)	Article Number	Box (Piece)	Bag (Piece)
15	1241015	30	2
22	1241022	30	2
28	1241028	30	2
35	1241035	24	2
42	1241042	20	2
54	1241054	16	2
66.7	1241066	4	1
76.1	1241076	2	1
88.9	1241088	1	1
108	1241108	1	1



Wallplate Female

Dimensions (mm/inches)	Article Number	Box (Piece)	Bag (Piece)
15 x 1/2"	1234015012	50	2
22 x 3/4"	1234022034	30	2



Socket Reducer

Dimensions (mm)	Article Number	Box (Piece)	Bag (Piece)
22 x 15	124302215	120	10
28 x 15	124302815	80	10
28 x 22	124302822	60	10
35 x 22	124303522	40	10
35 x 28	124303528	32	4
42 x 22	124304222	24	4
42 x 28	124304228	24	4
42 x 35	124304235	24	4
54 x 22	124305422	12	2
54 x 28	124305428	12	2
54 x 35	124305435	12	2
54 x 42	124305442	12	2
66.7 x 28	124306628	3	1
66.7 x 35	124306635	3	1
66.7 x 42	124306642	3	1
66.7 x 54	124306654	3	1
76.1 x 42	124307642	3	1
76.1 x 54	124307654	3	1
76.1 x 66.7	124307666	3	1
88.9 x 54	124308854	1	1
88.9 x 76.1	124308876	1	1
108 x 54	124310854	1	1
108 x 66.7	124310866	1	1
108 x 76.1	124310876	1	1
108 x 88.9	124310888	1	1



Reducing Tee

Dimensions (mm)	Article Number	Box (Piece)	Bag (Piece)
22 x 15 x 22	12110221522	40	10
28 x 15 x 28	12110281528	30	10
28 x 22 x 28	12110282228	30	10
35 x 22 x 35	12110352235	16	4
35 x 28 x 35	12110352835	16	4
42 x 22 x 42	12110422242	12	4
42 x 28 x 42	12110422842	12	4
42 x 35 x 42	12110423542	10	2
54 x 22 x 54	12110542254	6	1
54 x 28 x 54	12110542854	6	1
54 x 35 x 54	12110543554	6	1
54 x 42 x 54	12110544254	6	1
66.7 x 28 x 66.7	12110662866	2	1
66.7 x 35 x 66.7	12110663566	2	1
66.7 x 42 x 66.7	12110664266	2	1
66.7 x 54 x 66.7	12110665466	2	1
76.1 x 22 x 76.1	12110762276	1	1
76.1 x 28 x 76.1	12110762876	1	1
76.1 x 35 x 76.1	12110763576	1	1
76.1 x 42 x 76.1	12110764276	1	1
76.1 x 54 x 76.1	12110765476	1	1
76.1 x 66.7 x 76.1	12110766676	1	1
88.9 x 54 x 88.9	12110885488	1	1
88.9 x 76.1 x 88.9	12110887688	1	1
108 x 54 x 108	121110854108	1	1
108 x 66.7 x 108	121110866108	1	1
108 x 76.1 x 108	121110876108	1	1
108 x 88.9 x 108	121110888108	1	1



Stainless Steel

Female Tee

Dimensions (mm/inches)	Article Number	Box (Piece)	Bag (Piece)
15 x 1/2" x 15	12120151215	60	2
15 x 3/8" x 15	12120153815	60	2
22 x 1/2" x 22	12120221222	40	2
22 x 3/4" x 22	12120223422	40	2
28 x 1/2" x 28	12120281218	30	2
28 x 3/4" x 28	12120283428	24	2
35 x 1/2" x 35	12120351235	16	2
35 x 3/4" x 35	12120353435	12	2
42 x 1/2" x 42	12120421242	10	2
42 x 3/4" x 42	12120423442	8	1
54 x 1/2" x 54	12120541254	6	1
54 x 3/4" x 54	12120543454	6	1
66.7 x 3/4" x 66.7	12120663466	2	1
76.1 x 3/4" x 76.1	12120763476	1	1
88.9 x 3/4" x 88.9	12120883488	1	1
108 x 3/4" x 108	121210834108	1	1



Equal Tee

Dimensions (mm)	Article Number	Box (Piece)	Bag (Piece)
15 x 15 x 15	12100151515	80	10
22 x 22 x 22	12100222222	40	10
28 x 28 x 28	12100282828	24	4
35 x 35 x 35	12100353535	12	2
42 x 42 x 42	12100424242	8	2
54 x 54 x 54	12100545454	4	1
66.7 x 66.7 x 66.7	12100666666	2	1
76.1 x 76.1 x 76.1	12100767676	1	1
88.9 x 88.9 x 88.9	12100888888	1	1
108 x 108 x 108	1210108108108	1	1



Tap Connector

Dimensions (mm/inches)	Article Number	Box (Piece)	Bag (Piece)
15 x 1/2"	1207015012	30	2
15 x 3/4"	1207015034	30	2
22 x 1"	1207022100	30	2
28 x 1 1/4"	1207028114	24	2
35 x 1 1/2"	1207035112	24	2



Male Union Adapter - with Flat Seal

Dimensions (mm/inches)	Article Number	Box (Piece)	Bag (Piece)
15 x 1/2"	1208015012	10	2
22 x 3/4"	1208022034	10	2
28 x 1"	1208028100	8	2
35 x 1 1/4"	1208035114	8	2
42 x 1 1/2"	1208042112	4	2
54 x 2"	1208054200	2	1



Flange with Press Joint

Dimensions (mm)	Article Number	Box (Piece)	Bag (Piece)
22 PN16 DN20	1240022	1	1
28 PN16 DN25	1240028	1	1
35 PN16 DN32	1240035	1	1
42 PN16 DN40	1240042	1	1
54 PN16 DN50	1240054	1	1
66.7 PN16 DN65	1240066	1	1
76.1 PN16 DN65	1240076	1	1
88.9 PN16 DN80	1240088	1	1
108 PN16 DN100	1240108	1	1



Bend 90° ØxØ

Dimensions (mm)	Article Number	Box (Piece)	Bag (Piece)
15 x 15	123501515	60	2
22 x 22	123502222	40	2
28 x 28	123502828	20	2
35 x 35	123503535	6	2
42 x 42	123504242	2	1
54 x 54	123505454	2	1
76.1 x 76.1	123507676	1	1
88.9 x 88.9	123508888	1	1
108 x 108	1235108108	1	1



Bend 45° ØxØ

Dimensions (mm)	Article Number	Box (Piece)	Bag (Piece)
15 x 15	123801515	40	2
22 x 22	123802222	40	2
28 x 28	123802828	20	2
35 x 35	123803535	10	1
42 x 42	123804242	6	1
54 x 54	123805454	2	1
76.1 x 76.1	123807676	1	1
88.9 x 88.9	123808888	1	1
108 x 108	1238108108	1	1



Partial Crossover ØxØ

Dimensions (mm)	Article Number	Box (Piece)	Bag (Piece)
15 x 15	123601515	60	2
22 x 22	123602222	40	2
28 x 28	123602828	60	2



If you have any questions or to place an order, please contact us:

Straight Coupling

Dimensions (mm)	Article Number	Box (Piece)	Bag (Piece)
15 x 15	170001515	150	10
22 x 22	170002222	80	10
28 x 28	170002828	20	10
35 x 35	170003535	12	4
42 x 42	170004242	12	4
54 x 54	170005454	12	2
66.7 x 66.7	170006666	3	1
76.1 x 76.1	170007676	3	1
88.9 x 88.9	170008888	2	1
108 x 108	1700108108	1	1



Slip Coupling

Dimensions (mm)	Article Number	Box (Piece)	Bag (Piece)
15 x 15	170401515	50	2
22 x 22	170402222	50	2
28 x 28	170402828	30	2
35 x 35	170403535	20	2
42 x 42	170404242	20	1
54 x 54	170405454	8	1
66.7 x 66.7	170406666	2	1
76.1 x 76.1	170407676	2	1
88.9 x 88.9	170408888	1	1
108 x 108	1704108108	1	1



Bend 90°

Dimensions (mm)	Article Number	Box (Piece)	Bag (Piece)
15 x 15	172001515	100	10
22 x 22	172002222	50	10
28 x 28	172002828	30	10
35 x 35	172003535	12	4
42 x 42	172004242	8	2
54 x 54	172005454	6	2
66.7 x 66.7	172006666	2	1
76.1 x 76.1	172007676	2	1
88.9 x 88.9	172008888	1	1
108 x 108	1720108108	1	1



Bend 90° Ø

Dimensions (mm)	Article Number	Box (Piece)	Bag (Piece)
15 x 15	172101515	50	10
22 x 22	172102222	30	10
28 x 28	172102828	16	10
35 x 35	172103535	12	4
42 x 42	172104242	8	2
54 x 54	172105454	6	2
66.7 x 66.7	172106666	2	1
76.1 x 76.1	172107676	2	1
88.9 x 88.9	172108888	1	1
108 x 108	17210108108	1	1



Bend 45°

Dimensions (mm)	Article Number	Box (Piece)	Bag (Piece)
15 x 15	172301515	120	10
22 x 22	172302222	60	10
28 x 28	172302828	30	10
35 x 35	172303535	20	4
42 x 42	172304242	12	2
54 x 54	172305454	6	2
66.7 x 66.7	172306666	2	1
76.1 x 76.1	172307676	2	1
88.9 x 88.9	172308888	1	1
108 x 108	1723108108	1	1



Bend 45° Ø

Dimensions (mm)	Article Number	Box (Piece)	Bag (Piece)
15 x 15	172401515	120	10
22 x 22	172402222	60	10
28 x 28	172402828	30	10
35 x 35	172403535	20	4
42 x 42	172404242	12	2
54 x 54	172405454	6	2
66.7 x 66.7	172406666	2	1
76.1 x 76.1	172407676	2	1
88.9 x 88.9	172408888	1	1
108 x 108	1724108108	1	1



Bend 90° Male

Dimensions (mm/inches)	Article Number	Box (Piece)	Bag (Piece)
15 x 1/2"	1731015012	80	2
15 x 3/8"	1731015038	80	2
22 x 3/4"	1731022034	40	2
28 x 1"	1731028100	20	2
35 x 1 1/4"	1731035114	12	2
42 x 1 1/2"	1731042112	8	2
54 x 2"	1731054200	4	1



Bend 90° Female

Dimensions (mm/inches)	Article Number	Box (Piece)	Bag (Piece)
15 x 1/2"	1732015012	80	2
15 x 3/8"	1732015038	80	2
22 x 3/4"	1732022034	40	2
22 x 1/2"	1732022012	40	2
28 x 1/2"	1732028012	20	2
28 x 1"	1732028100	20	2
35 x 1/2"	1732035012	12	2
35 x 1 1/4"	1732035114	12	2



Male Adapter

Dimensions (mm/inches)	Article Number	Box (Piece)	Bag (Piece)
15 x 1/2"	1701015012	100	10
15 x 3/4"	1701015034	100	10
15 x 3/8"	1701015038	100	10
22 x 1/2"	1701022012	100	10
22 x 3/4"	1701022034	80	10
22 x 1"	1701022100	50	10
28 x 3/4"	1701028034	50	10
28 x 1"	1701028100	20	10
35 x 1"	1701035100	24	4
35 x 1 1/4"	1701035114	12	4
42 x 1 1/2"	1701042112	10	4
54 x 2"	1701054200	10	2
66.7 x 2 1/2"	1701066212	1	1
76.1 x 2 1/2"	1701076212	1	1
88.9 x 3"	1701088300	1	1
108 x 4"	1701108400	1	1



Female Adapter

Dimensions (mm/inches)	Article Number	Box (Piece)	Bag (Piece)
15 x 3/4"	1702015034	80	10
15 x 1/2"	1702015012	120	10
15 x 3/8"	1702015038	80	10
22 x 3/4"	1702022034	80	10
22 x 1/2"	1702022012	100	10
22 x 1"	1702022100	50	10
28 x 3/4"	1702028034	50	10
28 x 1"	1702028100	50	10
35 x 1"	1702035100	24	4
35 x 1 1/4"	1702035114	24	4
42 x 1 1/2"	1702042112	10	4
54 x 2"	1702054200	10	2



Wallplate Female

Dimensions (mm/inches)	Article Number	Box (Piece)	Bag (Piece)
15 x 1/2"	1734015012	50	2
22 x 3/4"	1734022034	30	2



Endcap

Dimensions (mm)	Article Number	Box (Piece)	Bag (Piece)
15	1741015	30	2
22	1741022	30	2
28	1741028	30	2
35	1741035	24	2
42	1741042	20	2
54	1741054	16	2
66.7	1741066	16	1
76.1	1741076	2	1
88.9	1741088	1	1
108	1741108	1	1



Socket Reducer

Dimensions (mm)	Article Number	Box (Piece)	Bag (Piece)
22 x 15	174302215	120	10
28 x 15	174302815	20	10
28 x 22	174302822	20	10
35 x 22	174303522	12	10
35 x 28	174303528	12	4
42 x 22	174304222	12	4
42 x 28	174304228	12	4
42 x 35	174304235	12	4
54 x 22	174305422	12	2
54 x 28	174305428	12	2
54 x 35	174305435	12	2
54 x 42	174305442	12	2
66.7 x 28	174306628	3	1
66.7 x 35	174306635	3	1
66.7 x 42	174306642	3	1
66.7 x 54	174306654	3	1
76.1 x 42	174307642	3	1
76.1 x 54	174307654	3	1
76.1 x 66.7	174307666	3	1
88.9 x 54	174308854	1	1
88.9 x 76.1	174308876	1	1
108 x 54	174310854	1	1
108 x 66.7	174310867	1	1
108 x 76.1	174310876	1	1
108 x 88.9	174310888	1	1



Reducing Tee

Dimensions (mm)	Article Number	Box (Piece)	Bag (Piece)
22 x 15 x 22	17110221522	40	10
28 x 15 x 28	17110281528	30	10
28 x 22 x 28	17110282228	12	10
35 x 22 x 35	17110352235	8	4
35 x 28 x 35	17110352835	6	4
42 x 22 x 42	17110422242	6	4
42 x 28 x 42	17110422842	6	4
42 x 35 x 42	17110423542	6	2
54 x 22 x 54	17110542254	6	1
54 x 28 x 54	17110542854	6	1
54 x 35 x 54	17110543554	6	1
54 x 42 x 54	17110544254	6	1
66.7 x 28 x 66.7	17110662866	2	1
66.7 x 35 x 66.7	17110663566	2	1
66.7 x 42 x 66.7	17110664266	2	1
66.7 x 54 x 66.7	17110665466	2	1
76.1 x 22 x 76.1	17110762276	1	1
76.1 x 28 x 76.1	17110762876	1	1
76.1 x 35 x 76.1	17110763576	1	1
76.1 x 42 x 76.1	17110764276	1	1
76.1 x 54 x 76.1	17110765476	1	1
76.1 x 66.7 x 76.1	17110766676	1	1
88.9 x 54 x 88.9	17110885488	1	1
88.9 x 76.1 x 88.9	17110887688	1	1
108 x 54 x 108	171110854108	1	1
108 x 66.7 x 108	171110866108	1	1
108 x 76.1 x 108	171110876108	1	1
108 x 88.9 x 108	171110888108	1	1



Equal Tee

Dimensions (mm)	Article Number	Box (Piece)	Bag (Piece)
15 x 15 x 15	17100151515	80	10
22 x 22 x 22	17100222222	40	10
28 x 28 x 28	17100282828	12	4
35 x 35 x 35	17100353535	6	2
42 x 42 x 42	17100424242	4	2
54 x 54 x 54	17100545454	4	1
66.7 x 66.7 x 66.7	17100666666	1	1
76.1 x 76.1 x 76.1	17100767676	1	1
88.9 x 88.9 x 88.9	17100888888	1	1
108 x 108 x 108	1710108108108	1	1



Female Tee

Dimensions (mm/inches)	Article Number	Box (Piece)	Bag (Piece)
15 x 1/2" x 15	17120151215	1	2
15 x 3/8" x 15	17120153815	60	2
22 x 1/2" x 22	17120221222	1	2
22 x 3/4" x 22	17120223422	40	2
28 x 1/2" x 28	17120281228	1	2
28 x 3/4" x 28	17120283428	24	2
35 x 1/2" x 35	17120351235	1	2
35 x 3/4" x 35	17120353435	12	2
42 x 1/2" x 42	17120421242	1	2
42 x 3/4" x 42	17120423442	1	1
54 x 1/2" x 54	17120541254	1	1
54 x 3/4" x 54	17120543454	1	1
66.7 x 3/4" x 66.7	17120663466	1	1
76.1 x 3/4" x 76.1	17120763476	1	1
88.9 x 3/4" x 88.9	17120883488	1	1
108 x 3/4" x 108	171210834108	1	1



Flange with Press Joint

Dimensions (mm)	Article Number	Box (Piece)	Bag (Piece)
22 PN16 DN20	1740022	1	1
28 PN16 DN25	1740028	1	1
35 PN16 DN32	1740035	1	1
42 PN16 DN40	1740042	1	1
54 PN16 DN50	1740054	1	1
66.7 PN16 DN65	1740066	1	1
76.1 PN16 DN65	1740076	1	1
88.9 PN16 DN80	1740088	1	1
108 PN16 DN100	1740108	1	1



Straight Coupling

Dimensions (mm)	Article Number	Box (Piece)	Bag (Piece)
15 x 15	140001515	150	10
22 x 22	140002222	80	10
28 x 28	140002828	50	10
35 x 35	140003535	24	4
42 x 42	140004242	20	2
54 x 54	140005454	12	2
66.7 x 66.7	140006666	3	1
76.1 x 76.1	140007676	3	1
88.9 x 88.9	140008888	2	1
108 x 108	1400108108	1	1



Slip Coupling

Dimensions (mm)	Article Number	Box (Piece)	Bag (Piece)
15 x 15	140401515	50	2
22 x 22	140402222	50	2
28 x 28	140402828	30	2
35 x 35	140403535	20	2
42 x 42	140404242	20	2
54 x 54	140405454	8	2
66.7 x 66.7	140406666	2	1
76.1 x 76.1	140407676	2	1
88.9 x 88.9	140408888	1	1
108 x 108	1404108108	1	1



Bend 90°

Dimensions (mm)	Article Number	Box (Piece)	Bag (Piece)
15 x 15	142001515	100	10
22 x 22	142002222	50	10
28 x 28	142002828	30	10
35 x 35	142003535	12	4
42 x 42	142004242	8	2
54 x 54	142005454	6	2
66.7 x 66.7	142006666	2	1
76.1 x 76.1	142007676	2	1
88.9 x 88.9	142008888	1	1
108 x 108	1420108108	1	1



Bend 90° Ø

Dimensions (mm)	Article Number	Box (Piece)	Bag (Piece)
15 x 15	142101515	100	10
22 x 22	142102222	50	10
28 x 28	142102828	30	10
35 x 35	142103535	12	4
42 x 42	142104242	8	2
54 x 54	142105454	6	2
66.7 x 66.7	142106666	2	1
76.1 x 76.1	142107676	2	1
88.9 x 88.9	142108888	1	1
108 x 108	1421108108	1	1



Bend 45°

Dimensions (mm)	Article Number	Box (Piece)	Bag (Piece)
15 x 15	142301515	120	10
22 x 22	142302222	60	10
28 x 28	142302828	30	10
35 x 35	142303535	20	4
42 x 42	142304242	12	2
54 x 54	142305454	6	2
66.7 x 66.7	142306666	2	1
76.1 x 76.1	142307676	2	1
88.9 x 88.9	142308888	1	1
108 x 108	1423108108	1	1



Bend 45° Ø

Dimensions (mm)	Article Number	Box (Piece)	Bag (Piece)
15 x 15	142401515	120	10
22 x 22	142402222	60	10
28 x 28	142402828	30	10
35 x 35	142403535	20	4
42 x 42	142404242	12	2
54 x 54	142405454	6	2
66.7 x 66.7	142406666	2	1
76.1 x 76.1	142407676	2	1
88.9 x 88.9	142408888	1	1
108 x 108	1424108108	1	1



Bend 90° Male

Dimensions (mm/inches)	Article Number	Box (Piece)	Bag (Piece)
15 x 1/2"	1431015012	80	2
15 x 3/8"	1431015038	80	2
22 x 3/4"	1431022034	40	2
28 x 1"	1431028100	20	2
35 x 1 1/4"	1431035114	12	2
42 x 1 1/2"	1431042112	8	2
54 x 2"	1431054200	4	1



Bend 90° Female

Dimensions (mm/inches)	Article Number	Box (Piece)	Bag (Piece)
15 x 1/2"	1432015012	80	2
15 x 3/8"	1432015038	80	2
22 x 3/4"	1432022034	40	2
22 x 1/2"	1432022012	40	2
28 x 1/2"	1432028012	20	2
28 x 1"	1432028100	20	2
35 x 1/2"	1432035012	12	2
34 x 1 1/4"	1432035114	12	2



Male Adapter

Dimensions (mm/inches)	Article Number	Box (Piece)	Bag (Piece)
15 x 1/2"	1401015012	100	10
15 x 3/4"	1401015034	100	10
15 x 3/8"	1401015038	100	10
22 x 1/2"	1401022012	100	10
22 x 3/4"	1401022034	80	10
22 x 1"	1401022100	50	10
28 x 3/4"	1401028034	50	10
28 x 1"	1401028100	50	10
35 x 1"	1401035100	24	4
35 x 1 1/4"	1401035114	24	4
42 x 1 1/2"	1401042112	20	4
54 x 2"	1401054200	10	2
66.7 x 2 1/2"	1401066212	2	1
76.1 x 2 1/2"	1401076212	1	1
88.9 x 3"	1401088300	1	1
108 x 4"	1401108400	1	1



Female Adapter

Dimensions (mm/inches)	Article Number	Box (Piece)	Bag (Piece)
15 x 1/2"	1402015012	120	10
15 x 3/4"	1402015034	80	10
15 x 3/8"	1402015038	80	10
22 x 1/2"	1402022012	100	10
22 x 3/4"	1402022034	80	10
22 x 1"	1402022100	50	10
28 x 3/4"	1402028034	50	10
28 x 1"	1402028100	50	10
35 x 1"	1402035100	24	4
35 x 1 1/4"	1402035114	24	4
42 x 1 1/2"	1402042112	20	4
54 x 2"	1402054200	10	2



Endcap

Dimensions (mm)	Article Number	Box (Piece)	Bag (Piece)
15	1441015	30	2
22	1441022	30	2
28	1441028	30	2
35	1441035	24	2
42	1441042	20	2
54	1441054	16	2
66.7	1441066	4	1
76.1	1441076	2	1
88.9	1441088	1	1
108	1441108	1	1



Wallplate Female

Dimensions (mm/inches)	Article Number	Box (Piece)	Bag (Piece)
15 x 1/2"	1434015012	50	2
22 x 3/4"	1434022034	30	2



Socket Reducer

Dimensions (mm)	Article Number	Box (Piece)	Bag (Piece)
22 x 15	144302215	120	10
28 x 15	144302815	80	10
28 x 22	144302822	60	10
35 x 22	144303522	40	10
35 x 28	144303528	32	4
42 x 22	144304222	24	4
42 x 28	144304228	24	4
42 x 35	144304235	24	4
54 x 22	144305422	12	2
54 x 28	144305428	12	2
54 x 35	144305435	12	2
54 x 42	144305442	12	2
66.7 x 28	144306628	3	1
66.7 x 35	144306635	3	1
66.7 x 42	144306642	3	1
66.7 x 54	144306654	3	1
76.1 x 42	144307642	3	1
76.1 x 54	144307654	3	1
76.1 x 66.7	144307666	3	1
88.9 x 54	144308854	1	1
88.9 x 76.1	144308876	1	1
108 x 54	144310854	1	1
108 x 66.7	144310866	1	1
108 x 76.1	144310876	1	1
108 x 88.9	144310888	1	1



Reducing Tee

Dimensions (mm)	Article Number	Box (Piece)	Bag (Piece)
22 x 15 x 22	14110221522	40	10
28 x 15 x 28	14110281528	30	10
28 x 22 x 28	14110282228	30	10
35 x 22 x 35	14110352235	16	4
35 x 28 x 35	14110352835	16	4
42 x 22 x 42	14110422242	12	4
42 x 28 x 42	14110422842	12	4
42 x 35 x 42	14110423542	10	2
54 x 22 x 54	14110542254	6	1
54 x 28 x 54	14110542854	6	1
54 x 35 x 54	14110543554	6	1
54 x 42 x 54	14110544254	6	1
66.7 x 28 x 66.7	14110662866	2	1
66.7 x 35 x 66.7	14110663566	2	1
66.7 x 42 x 66.7	14110664266	2	1
66.7 x 54 x 66.7	14110665466	2	1
76.1 x 22 x 76.1	14110762276	1	1
76.1 x 28 x 76.1	14110762876	1	1
76.1 x 35 x 76.1	14110763576	1	1
76.1 x 42 x 76.1	14110764276	1	1
76.1 x 54 x 76.1	14110765476	1	1
76.1 x 66.7 x 76.1	14110766676	1	1
88.9 x 54 x 88.9	14110885488	1	1
88.9 x 76.1 x 88.9	14110887688	1	1
108 x 54 x 108	141110854108	1	1
108 x 66.7 x 108	141110866108	1	1
108 x 76.1 x 108	141110876108	1	1
108 x 88.9 x 108	141110888108	1	1



Equal Tee

Dimensions (mm)	Article Number	Box (Piece)	Bag (Piece)
15 x 15 x 15	14100151515	80	10
22 x 22 x 22	14100222222	40	10
28 x 28 x 28	14100282828	24	4
35 x 35 x 35	14100353535	12	2
42 x 42 x 42	14100424242	8	2
54 x 54 x 54	14100545454	4	1
66.7 x 66.7 x 66.7	14100666666	2	1
76.1 x 76.1 x 76.1	14100767676	1	1
88.9 x 88.9 x 88.9	14100888888	1	1
108 x 108 x 108	1410108108108	1	1



Female Tee

Dimensions (mm/inches)	Article Number	Box (Piece)	Bag (Piece)
15 x 1/2" x 15	14120151215	60	2
15 x 3/8" x 15	14120153815	60	2
22 x 1/2" x 22	14120221222	40	2
22 x 3/4" x 22	14120223422	40	2
28 x 1/2" x 28	14120281218	30	2
28 x 3/4" x 28	14120283428	24	2
35 x 1/2" x 35	14120351235	16	2
35 x 3/4" x 35	14120353435	12	2
42 x 1/2" x 42	14120421242	10	2
42 x 3/4" x 42	14120423442	8	1
54 x 1/2" x 54	14120541254	6	1
54 x 3/4" x 54	14120543454	6	1
66.7 x 3/4" x 66.7	14120663466	2	1
76.1 x 3/4" x 76.1	14120763476	1	1
88.9 x 3/4" x 88.9	14120883488	1	1
108 x 3/4" x 108	141210834108	1	1



Tap Connector

Dimensions (mm/inches)	Article Number	Box (Piece)	Bag (Piece)
15 x 1/2"	1407015012	30	2
15 x 3/4"	1407015034	30	2
22 x 1"	1407022100	30	2
28 x 1 1/4"	1407028114	24	2
35 x 1 1/2"	1407035112	24	2



Straight Male Union Adapter

Dimensions (mm/inches)	Article Number	Box (Piece)	Bag (Piece)
15 x 1/2"	1408015012	10	2
22 x 3/4"	1408022034	10	2
35 x 1 1/4"	1408035114	8	2
42 x 1 1/2"	1408042112	4	2
54 x 2"	1408054200	2	1



Flange with Press Joint

Dimensions (mm)	Article Number	Box (Piece)	Bag (Piece)
22 PN16 DN20	1440022	1	1
28 PN16 DN25	1440028	1	1
35 PN16 DN32	1440035	1	1
42 PN16 DN40	1440042	1	1
54 PN16 DN50	1440054	1	1
66.7 PN16 DN65	1440066	1	1
76.1 PN16 DN65	1440076	1	1
88.9 PN16 DN80	1440088	1	1
108 PN16 DN100	1440108	1	1



Straight Coupling

Dimensions (mm)	Article Number	Box (Piece)	Bag (Piece)
15 x 15	130001515	150	10
22 x 22	130002222	80	10
28 x 28	130002828	50	10
35 x 35	130003535	24	4
42 x 42	130004242	20	2
54 x 54	130005454	12	2



Slip Coupling

Dimensions (mm)	Article Number	Box (Piece)	Bag (Piece)
15 x 15	130401515	50	2
22 x 22	130402222	50	2
28 x 28	130402828	30	2
35 x 35	130403535	20	2
42 x 42	130404242	20	2
54 x 54	130405454	8	2



Bend 90°

Dimensions (mm)	Article Number	Box (Piece)	Bag (Piece)
15 x 15	132001515	100	10
22 x 22	132002222	50	10
28 x 28	132002828	30	10
35 x 35	132003535	12	4
42 x 42	132004242	8	2
54 x 54	132005454	6	2



Bend 90° Ø

Dimensions (mm)	Article Number	Box (Piece)	Bag (Piece)
15 x 15	132101515	100	10
22 x 22	132102222	50	10
28 x 28	132102828	30	10
35 x 35	132103535	12	4
42 x 42	132104242	8	2
54 x 54	132105454	6	2



Bend 45°

Dimensions (mm)	Article Number	Box (Piece)	Bag (Piece)
15 x 15	132301515	120	10
22 x 22	132302222	60	10
28 x 28	132302828	30	10
35 x 35	132303535	20	4
42 x 42	132304242	12	2
54 x 54	132305454	6	2



Bend 45° Ø

Dimensions (mm)	Article Number	Box (Piece)	Bag (Piece)
15 x 15	132401515	120	10
22 x 22	132402222	60	10
28 x 28	132402828	30	10
35 x 35	132403535	20	4
42 x 42	132404242	12	2
54 x 54	132405454	6	2



Bend 90° Male

Dimensions (mm/inches)	Article Number	Box (Piece)	Bag (Piece)
15 x 1/2"	1331015012	80	2
15 x 3/8"	1331015038	80	2
22 x 3/4"	1331022034	40	2
28 x 1"	1331028100	20	2
35 x 1 1/4"	1331035114	12	2
42 x 1 1/2"	1331042112	8	2
54 x 2"	1331054200	4	1



Bend 90° Female

Dimensions (mm/inches)	Article Number	Box (Piece)	Bag (Piece)
15 x 1/2"	1332015012	80	2
15 x 3/8"	1332015038	80	2
22 x 3/4"	1332022034	40	2
22 x 1/2"	1332022012	40	2
28 x 1/2"	1332028012	20	2
28 x 1"	1332028100	20	2
35 x 1/2"	1332035012	12	2
35 x 1 1/4"	1332035114	12	2



Male Adapter

Dimensions (mm/inches)	Article Number	Box (Piece)	Bag (Piece)
15 x 1/2"	1301015012	100	10
15 x 3/4"	1301015034	100	10
15 x 3/8"	1302015038	80	10
22 x 1/2"	1301022012	100	10
22 x 3/4"	1301022034	80	10
22 x 1"	1301022100	50	10
28 x 3/4"	1301028034	50	10
28 x 1"	1301028100	50	10
35 x 1"	1301035100	24	4
35 x 1 1/4"	1301035114	24	4
42 x 1 1/2"	1301042112	20	4
54 x 2"	1301054200	10	2



Female Adapter

Dimensions (mm/inches)	Article Number	Box (Piece)	Bag (Piece)
15 x 1/2"	1302015012	120	10
15 x 3/4"	1302015034	80	10
15 x 3/8"	1302015038	80	10
22 x 1/2"	1302022012	100	10
22 x 3/4"	1302022034	80	10
22 x 1"	1302022100	50	10
28 x 3/4"	1302028034	50	10
28 x 1"	1302028100	50	10
35 x 1"	1302035100	24	4
35 x 1 1/4"	1302035114	24	4
42 x 1 1/2"	1302042112	20	4
54 x 2"	1302054200	10	2



Stainless Steel Steam

Socket Reducer

Dimensions (mm)	Article Number	Box (Piece)	Bag (Piece)
22 x 15	134302215	120	10
28 x 15	134302815	80	10
28 x 22	134302822	60	10
35 x 22	134303522	40	10
35 x 28	134303528	32	4
42 x 22	134304222	24	4
42 x 28	134304228	24	4
42 x 35	134304235	24	4
54 x 22	134305422	12	2
54 x 28	134305428	12	2
54 x 35	134305435	12	2
54 x 42	134305442	12	2



Reducing Tee

Dimensions (mm)	Article Number	Box (Piece)	Bag (Piece)
22 x 15 x 22	13110221522	40	10
28 x 15 x 28	13110281528	30	10
28 x 22 x 28	13110282228	30	10
35 x 22 x 35	13110352235	16	4
35 x 28 x 35	13110352835	16	4
42 x 22 x 42	13110422242	12	4
42 x 28 x 42	13110422842	12	4
42 x 35 x 42	13110423542	10	2
54 x 22 x 54	13110542254	6	1
54 x 28 x 54	13110542854	6	1
54 x 35 x 54	13110543554	6	1
54 x 42 x 54	13110544254	6	1



Equal Tee

Dimensions (mm)	Article Number	Box (Piece)	Bag (Piece)
15 x 15 x 15	13100151515	80	10
22 x 22 x 22	13100222222	40	10
28 x 28 x 28	13100282828	24	4
35 x 35 x 35	13100353535	12	2
42 x 42 x 42	13100424242	8	2
54 x 54 x 54	13100545454	4	1



Female Tee

Dimensions (mm/inches)	Article Number	Box (Piece)	Bag (Piece)
15 x 1/2" x 15	13120151215	60	2
15 x 3/8" x 15	13120153815	60	2
22 x 1/2" x 22	13120221222	40	2
22 x 3/4" x 22	13120223422	40	2
28 x 1/2" x 28	13120281228	30	2
28 x 3/4" x 28	13120283428	24	2
35 x 1/2" x 35	13120351235	16	2
35 x 3/4" x 35	13120353435	12	2
42 x 1/2" x 42	13120421242	10	2
42 x 3/4" x 42	13120423442	8	1
54 x 1/2" x 54	13120541254	6	1
54 x 3/4" x 54	13120543454	6	1



Endcap

Dimensions (mm)	Article Number	Box (Piece)	Bag (Piece)
15	1341015	30	2
22	1341022	30	2
28	1341028	30	2
35	1341035	24	2
42	1341042	20	2
54	1341054	16	2



Wallplate Female

Dimensions (mm/inches)	Article Number	Box (Piece)	Bag (Piece)
15 x 1/2"	1334015012	50	2
22 x 3/4"	1334022034	30	2



Flange with Press Joint

Dimensions (mm)	Article Number	Box (Piece)	Bag (Piece)
22 PN16 DN20	1340022	1	1
28 PN16 DN25	1340028	1	1
35 PN16 DN32	1340035	1	1
42 PN16 DN40	1340042	1	1
54 PN16 DN50	1340054	1	1



If you have any questions or to place an order, please contact us:

Straight Coupling

Dimensions (mm)	Article Number	Box (Piece)	Bag (Piece)
139.7 x 139.7	1200139139	1	1
168.3 x 168.3	1200168168	1	1



Bend 90°

Dimensions (mm)	Article Number	Box (Piece)	Bag (Piece)
139.7 x 139.7	1220139139	1	1
168.3 x 168.3	1220168168	1	1



Bend 90° Ø

Dimensions (mm)	Article Number	Box (Piece)	Bag (Piece)
139.7 x 139.7	1221139139	1	1
168.3 x 168.3	1221168168	1	1



Bend 45°

Dimensions (mm)	Article Number	Box (Piece)	Bag (Piece)
139.7 x 139.7	1223139139	1	1
168.3 x 168.3	1223168168	1	1



Bend 45° Ø

Dimensions (mm)	Article Number	Box (Piece)	Bag (Piece)
139.7 x 139.7	1224139139	1	1
168.3 x 168.3	1224168168	1	1



Socket Reducer

Dimensions (mm)	Article Number	Box (Piece)	Bag (Piece)
139.7 x 108	1243139108	1	1
168.3 x 108	1243168108	1	1
168.3 x 139.7	1243168139	1	1



Equal Tee

Dimensions (mm)	Article Number	Box (Piece)	Bag (Piece)
139.7 x 139.7 x 139.7	1210139139139	1	1
168.3 x 168.3 x 168.3	1210168168168	1	1



Reducing Tee

Dimensions (mm)	Article Number	Box (Piece)	Bag (Piece)
139.7 x 108 x 139.7	121139108139	1	1
168.3 x 108 x 168.3	121168108168	1	1
168.3 x 139.7 x 168.3	121168139168	1	1



Flange with Press Joint

Dimensions (mm)	Article Number	Box (Piece)	Bag (Piece)
139.7 PN16	1240139139	1	1
168.3 PN16	1240168168	1	1



Stainless Steel 316 MXL Gas Fittings



Straight Coupling

Dimensions (mm)	Article Number	Box (Piece)	Bag (Piece)
139.7 x 139.7	1700139139	1	1
168.3 x 168.3	1700168168	1	1



Bend 90°

Dimensions (mm)	Article Number	Box (Piece)	Bag (Piece)
139.7 x 139.7	1720139139	1	1
168.3 x 168.3	1720168168	1	1



Bend 90° Ø

Dimensions (mm)	Article Number	Box (Piece)	Bag (Piece)
139.7 x 139.7	1721139139	1	1
168.3 x 168.3	1721168168	1	1



Bend 45°

Dimensions (mm)	Article Number	Box (Piece)	Bag (Piece)
139.7 x 139.7	1723139139	1	1
168.3 x 168.3	1723168168	1	1



Bend 45° Ø

Dimensions (mm)	Article Number	Box (Piece)	Bag (Piece)
139.7 x 139.7	1724139139	1	1
168.3 x 168.3	1724168168	1	1



Socket Reducer

Dimensions (mm)	Article Number	Box (Piece)	Bag (Piece)
139.7 x 108	1743139108	1	1
168.3 x 108	1743168108	1	1
168.3 x 139.7	1743168139	1	1



Equal Tee

Dimensions (mm)	Article Number	Box (Piece)	Bag (Piece)
139.7 x 139.7 x 139.7	1710139139139	1	1
168.3 x 168.3 x 168.3	1710168168168	1	1



Reducing Tee

Dimensions (mm)	Article Number	Box (Piece)	Bag (Piece)
139.7 x 108 x 139.7	171139108139	1	1
168.3 x 108 x 168.3	171168108168	1	1
168.3 x 139.7 x 168.3	171168139168	1	1



Flange with Press Joint

Dimensions (mm)	Article Number	Box (Piece)	Bag (Piece)
139.7 PN16	1740139139	1	1
168.3 PN16	1740168168	1	1



If you have any questions or to place an order, please contact us:

Straight Coupling

Dimensions (mm)	Article Number	Box (Piece)	Bag (Piece)
139.7 x 139.7	1400139139	1	1
168.3 x 168.3	1400168168	1	1



Bend 90°

Dimensions (mm)	Article Number	Box (Piece)	Bag (Piece)
139.7 x 139.7	1420139139	1	1
168.3 x 168.3	1420168168	1	1



Bend 90° Ø

Dimensions (mm)	Article Number	Box (Piece)	Bag (Piece)
139.7 x 139.7	1421139139	1	1
168.3 x 168.3	1421168168	1	1



Bend 45°

Dimensions (mm)	Article Number	Box (Piece)	Bag (Piece)
139.7 x 139.7	1423139139	1	1
168.3 x 168.3	1423168168	1	1



Bend 45° Ø

Dimensions (mm)	Article Number	Box (Piece)	Bag (Piece)
139.7 x 139.7	1424139139	1	1
168.3 x 168.3	1424168168	1	1



Socket Reducer

Dimensions (mm)	Article Number	Box (Piece)	Bag (Piece)
139.7 x 108	1443139108	1	1
168.3 x 108	1443168108	1	1
168.3 x 139.7	1443168139	1	1



Equal Tee

Dimensions (mm)	Article Number	Box (Piece)	Bag (Piece)
139.7 x 139.7 x 139.7	1410139139139	1	1
168.3 x 168.3 x 168.3	1410168168168	1	1



Reducing Tee

Dimensions (mm)	Article Number	Box (Piece)	Bag (Piece)
139.7 x 108 x 139.7	141139108139	1	1
168.3 x 108 x 168.3	141168108168	1	1
168.3 x 139.7 x 168.3	141168139168	1	1



Flange with Press Joint

Dimensions (mm)	Article Number	Box (Piece)	Bag (Piece)
139.7 PN16	1440139139	1	1
168.3 PN16	1440168168	1	1



Stainless Steel 304 Fittings

Straight Coupling

Dimensions (mm)	Article Number	Box (Piece)	Bag (Piece)
15 x 15	150001515	150	10
22 x 22	150002222	80	10
28 x 28	150002828	50	10
35 x 35	150003535	24	4
42 x 42	150004242	20	2
54 x 54	150005454	12	2
66.7 x 66.7	150006666	3	1
76.1 x 76.1	150007676	3	1
88.9 x 88.9	150008888	2	1
108 x 108	150108108	1	1



Slip Coupling

Dimensions (mm)	Article Number	Box (Piece)	Bag (Piece)
15 x 15	150401515	50	2
22 x 22	150402222	50	2
28 x 28	150402828	30	2
35 x 35	150403535	20	2
42 x 42	150404242	20	2
54 x 54	150405454	8	2
66.7 x 66.7	150406666	2	1
76.1 x 76.1	150407676	2	1
88.9 x 88.9	150408888	1	1
108 x 108	1504108108	1	1



Bend 90°

Dimensions (mm)	Article Number	Box (Piece)	Bag (Piece)
15 x 15	152001515	100	10
22 x 22	152002222	50	10
28 x 28	152002828	30	10
35 x 35	152003535	12	4
42 x 42	152004242	8	2
54 x 54	152005454	6	2
66.7 x 66.7	152006666	2	1
76.1 x 76.1	152007676	2	1
88.9 x 88.9	152008888	1	1
108 x 108	1520108108	1	1



Bend 90° Ø

Dimensions (mm)	Article Number	Box (Piece)	Bag (Piece)
15 x 15	152101515	100	10
22 x 22	152102222	50	10
28 x 28	152102828	30	10
35 x 35	152103535	12	4
42 x 42	152104242	8	2
54 x 54	152105454	6	2
66.7 x 66.7	152106666	2	1
76.1 x 76.1	152107676	2	1
88.9 x 88.9	152108888	1	1
108 x 108	1521108108	1	1



Bend 45°

Dimensions (mm)	Article Number	Box (Piece)	Bag (Piece)
15 x 15	152301515	120	10
22 x 22	152302222	60	10
28 x 28	152302828	30	10
35 x 35	152303535	20	4
42 x 42	152304242	12	2
54 x 54	152305454	6	2
66.7 x 66.7	152306666	2	1
76.1 x 76.1	152307676	2	1
88.9 x 88.9	152308888	1	1
108 x 108	1523108108	1	1



Bend 45° Ø

Dimensions (mm)	Article Number	Box (Piece)	Bag (Piece)
15 x 15	152401515	120	10
22 x 22	152402222	60	10
28 x 28	152402828	30	10
35 x 35	152403535	20	4
42 x 42	152404242	12	2
54 x 54	152405454	6	2
66.7 x 66.7	152406666	2	1
76.1 x 76.1	152407676	2	1
88.9 x 88.9	152408888	1	1
108 x 108	1524108108	1	1



Bend 90° Male

Dimensions (mm/inches)	Article Number	Box (Piece)	Bag (Piece)
15 x 1/2"	1531015012	80	2
15 x 3/8"	1531015038	80	2
22 x 3/4"	1531022034	40	2
28 x 1"	1531028100	20	2
35 x 1 1/4"	1531035114	12	2
42 x 1 1/2"	1531042112	8	2
54 x 2"	1531054200	4	1



Bend 90° Female

Dimensions (mm/inches)	Article Number	Box (Piece)	Bag (Piece)
15 x 1/2"	1532015012	80	2
15 x 3/8"	1532015038	80	2
22 x 3/4"	1532022034	40	2
28 x 1"	1532028100	20	2
34 x 1 1/4"	1532035114	12	2



If you have any questions or to place an order, please contact us:

Male Adapter

Dimensions (mm/inches)	Article Number	Box (Piece)	Bag (Piece)
15 x 1/2"	1501015012	150	10
15 x 3/4"	1501015034	80	10
15 x 3/8"	1501015038	50	10
22 x 1/2"	1501022012	24	4
22 x 3/4"	1501022034	20	4
22 x 1"	1501022100	10	2
28 x 3/4"	1501028034	2	1
28 x 1"	1501028100	1	1
35 x 1"	1501035100	1	1
35 x 1 1/4"	1501035114	1	1
42 x 1 1/2"	1501042112	1	1
54 x 2"	1501054200	1	1
66.7 x 2 1/2"	1501066212	1	1
76.1 x 2 1/2"	1501076212	1	1
88.9 x 3"	1501088300	1	1
108 x 4"	1501108400	1	1



Female Adapter

Dimensions (mm/inches)	Article Number	Box (Piece)	Bag (Piece)
15 x 1/2"	1502015012	150	10
15 x 3/4"	1502015034	80	10
15 x 3/8"	1502015038	50	10
22 x 1/2"	1502022012	24	4
22 x 3/4"	1502022034	20	4
22 x 1"	1502022100	10	2
28 x 3/4"	1502028034	2	1
28 x 1"	1502028100	1	1
35 x 1"	1502035100	1	1
35 x 1 1/4"	1502035114	1	1
42 x 1 1/2"	1502042112	1	1
54 x 2"	1502054200	1	1



Socket Reducer

Dimensions (mm)	Article Number	Box (Piece)	Bag (Piece)
22 x 15	154302215	120	10
28 x 15	154302815	80	10
28 x 22	154302822	60	10
35 x 22	154303522	40	10
35 x 28	154303528	32	4
42 x 22	154304222	24	4
42 x 28	154304228	24	4
42 x 35	154304235	12	2
54 x 22	154305422	12	2
54 x 28	154305428	12	2
54 x 35	154305435	3	1
54 x 42	154305442	1	1
66.7 x 28	154306628	1	1
66.7 x 35	154306635	1	1
66.7 x 42	154306642	1	1
66.7 x 54	154306654	1	1
76.1 x 42	154307642	1	1
76.1 x 54	154307654	1	1
76.1 x 66	154307666	1	1
88.9 x 54	154308854	1	1
88.9 x 76	154308876	1	1
108 x 54	154310854	1	1
108 x 66.7	154310866	1	1
108 x 76.1	154310876	1	1
108 x 88.9	154310888	1	1



Reducing Tee

Dimensions (mm)	Article Number	Box (Piece)	Bag (Piece)
22 x 15 x 22	15110221522	40	10
28 x 15 x 28	15110281528	30	10
28 x 22 x 28	15110282228	30	10
35 x 22 x 35	15110352235	16	4
35 x 28 x 35	15110352835	16	4
42 x 22 x 42	15110422242	10	2
42 x 28 x 42	15110422842	6	1
42 x 35 x 42	15110423542	2	1
54 x 22 x 54	15110542254	1	1
54 x 28 x 54	15110542854	1	1
54 x 35 x 54	15110543554	1	1
54 x 42 x 54	15110544254	1	1
66.7 x 28 x 66.7	15110662866	1	1
66.7 x 35 x 66.7	15110663566	1	1
66.7 x 42 x 66.7	15110664266	1	1
66.7 x 54 x 66.7	15110665466	1	1
76.1 x 22 x 76.1	15110762276	1	1
76.1 x 28 x 76.1	15110762876	1	1
76.1 x 35 x 76.1	15110763576	1	1
76.1 x 42 x 76.1	15110764276	1	1
76.1 x 54 x 76.1	15110765476	1	1
76.1 x 66.7 x 76.1	15110766676	1	1
88.9 x 54 x 88.9	15110885488	1	1
88.9 x 76.1 x 88.9	15110887688	1	1
108 x 54 x 108	151110854108	1	1
108 x 66.7 x 108	151110866108	1	1
108 x 76.1 x 108	151110876108	1	1
108 x 88.9 x 108	151110888108	1	1



Endcap

Dimensions (mm)	Article Number	Box (Piece)	Bag (Piece)
15	1541015	30	2
22	1541022	30	2
28	1541028	30	2
35	1541035	24	2
42	1541042	20	2
54	1541054	16	2
66.7	1541066	4	1
76.1	1541076	2	1
88.9	1541088	1	1
108	1541108	1	1



Wallplate Female

Dimensions (mm/inches)	Article Number	Box (Piece)	Bag (Piece)
15 x 1/2"	1534015012	50	2
22 x 3/4"	1534022034	30	2



Stainless Steel 304 Fittings

Equal Tee

Dimensions (mm)	Article Number	Box (Piece)	Bag (Piece)
15 x 15 x 15	15100151515	80	10
22 x 22 x 22	15100222222	40	10
28 x 28 x 28	15100282828	24	4
35 x 35 x 35	15100353535	12	2
42 x 42 x 42	15100424242	8	2
54 x 54 x 54	15100545454	4	1
66.7 x 66.7 x 66.7	15100666666	2	1
76.1 x 76.1 x 76.1	15100767676	1	1
88.9 x 88.9 x 88.9	15100888888	1	1
108 x 108 x 108	1510108108108	1	1



Female Tee

Dimensions (mm/inches)	Article Number	Box (Piece)	Bag (Piece)
15 x 1/2" x 15	15120151215	60	10
15 x 3/8" x 15	15120153815	60	10
22 x 1/2" x 22	15120221222	40	10
22 x 3/4" x 22	15120223422	40	10
28 x 1/2" x 28	15120281228	30	10
28 x 3/4" x 28	15120283428	30	10
35 x 1/2" x 35	15120351235	16	4
35 x 3/4" x 35	15120353435	16	4
42 x 1/2" x 42	15120421242	10	2
42 x 3/4" x 42	15120423442	10	2
54 x 1/2" x 54	15120541254	1	1
54 x 3/4" x 54	15120543454	1	1
66.7 x 3/4" x 66.7	15120663466	1	1
76.1 x 3/4" x 76.1	15120763476	1	1
88.9 x 3/4" x 88.9	15120883488	1	1



Tap Connector

Dimensions (mm/inches)	Article Number	Box (Piece)	Bag (Piece)
15 x 1/2"	1507015012	30	2
15 x 3/4"	1507015034	30	2
22 x 1"	1507022100	30	2
28 x 1 1/4"	1507028114	24	2
35 x 1 1/2"	1507035112	24	2



Male Union Adapter - with Flat Seal

Dimensions (mm/inches)	Article Number	Box (Piece)	Bag (Piece)
15 x 1/2"	1508015012	10	2
22 x 3/4"	1508022034	10	2
28 x 1"	1508028100	8	2
35 x 1 1/4"	1508035114	8	2
42 x 1 1/2"	1508042112	4	2
54 x 2"	1508054200	2	1



Flange with Press Joint

Dimensions (mm)	Article Number	Box (Piece)	Bag (Piece)
22 PN16 DN20	1540022	1	1
28 PN16 DN25	1540028	1	1
35 PN16 DN32	1540035	1	1
42 PN16 DN40	1540042	1	1
54 PN16 DN50	1540054	1	1
66.7 PN16 DN65	1540066	1	1
76.1 PN16 DN65	1540076	1	1
88.9 PN16 DN80	1540088	1	1
108 PN16 DN100	1540108	1	1



Bend 90° ØxØ

Dimensions (mm)	Article Number	Box (Piece)	Bag (Piece)
15 x 15	153501515	60	2
22 x 22	153502222	40	2
28 x 28	153502828	20	2
35 x 35	153503535	6	2
42 x 42	153504242	2	1
54 x 54	153505454	2	1
76.1 x 76.1	153507676	1	1
88.9 x 88.9	153508888	1	1
108 x 108	1535108108	1	1



Bend 45° ØxØ

Dimensions (mm)	Article Number	Box (Piece)	Bag (Piece)
15 x 15	153801515	40	2
22 x 22	153802222	40	2
28 x 28	153802828	20	2
35 x 35	153803535	10	1
42 x 42	153804242	6	1
54 x 54	153805454	2	1
76.1 x 76.1	153807676	1	1
88.9 x 88.9	153808888	1	1
108 x 108	1538108108	1	1



Partial Crossover ØxØ

Dimensions (mm)	Article Number	Box (Piece)	Bag (Piece)
15 x 15	153601515	60	2
22 x 22	153602222	40	2
28 x 28	153602828	60	2



If you have any questions or to place an order, please contact us:



Straight Coupling

Dimensions (mm)	Article Number	Box (Piece)	Bag (Piece)
15 x 15	180001515	150	10
22 x 22	180002222	80	10
28 x 28	180002828	50	10
35 x 35	180003535	24	4
42 x 42	180004242	20	2
54 x 54	180005454	12	2
66.7 x 66.7	180006666	3	1
76.1 x 76.1	180007676	3	1
88.9 x 88.9	180008888	2	1
108 x 108	1800108108	1	1



Slip Coupling

Dimensions (mm)	Article Number	Box (Piece)	Bag (Piece)
15 x 15	180401515	50	2
22 x 22	180402222	50	2
28 x 28	180402828	30	2
35 x 35	180403535	20	2
42 x 42	180404242	20	2
54 x 54	180405454	8	2
66.7 x 66.7	180406666	2	1
76.1 x 76.1	180407676	2	1
88.9 x 88.9	180408888	1	1
108 x 108	1804108108	1	1



Bend 90°

Dimensions (mm)	Article Number	Box (Piece)	Bag (Piece)
15 x 15	182001515	100	10
22 x 22	182002222	50	10
28 x 28	182002828	30	10
35 x 35	182003535	12	4
42 x 42	182004242	8	2
54 x 54	182005454	6	2
66.7 x 66.7	182006666	2	1
76.1 x 76.1	182007676	2	1
88.9 x 88.9	182008888	1	1
108 x 108	1820108108	1	1



Bend 90° Ø

Dimensions (mm)	Article Number	Box (Piece)	Bag (Piece)
15 x 15	182101515	100	10
22 x 22	182102222	50	10
28 x 28	182102828	30	10
35 x 35	182103535	12	4
42 x 42	182104242	8	2
54 x 54	182105454	6	2
66.7 x 66.7	182106666	2	1
76.1 x 76.1	182107676	2	1
88.9 x 88.9	182108888	1	1
108 x 108	1821108108	1	1



Bend 45°

Dimensions (mm)	Article Number	Box (Piece)	Bag (Piece)
15 x 15	182301515	120	10
22 x 22	182302222	60	10
28 x 28	182302828	30	10
35 x 35	182303535	20	4
42 x 42	182304242	12	2
54 x 54	182305454	6	2
66.7 x 66.7	182306666	2	1
76.1 x 76.1	182307676	2	1
88.9 x 88.9	182308888	1	1
108 x 108	1823108108	1	1



Bend 45° Ø

Dimensions (mm)	Article Number	Box (Piece)	Bag (Piece)
15 x 15	182401515	120	10
22 x 22	182402222	60	10
28 x 28	182402828	30	10
35 x 35	182403535	20	4
42 x 42	182404242	12	2
54 x 54	182405454	6	2
66.7 x 66.7	182406666	2	1
76.1 x 76.1	182407676	2	1
88.9 x 88.9	182408888	1	1
108 x 108	1824108108	1	1



Bend 90° Male

Dimensions (mm/inches)	Article Number	Box (Piece)	Bag (Piece)
15 x 1/2"	1831015012	80	2
15 x 3/8"	1831015038	80	2
22 x 3/4"	1831022034	40	2
28 x 1"	1831028100	20	2
35 x 1 1/4"	1831035114	12	2
42 x 1 1/2"	1831042112	8	2
54 x 2"	1831054200	4	1



Bend 90° Female

Dimensions (mm/inches)	Article Number	Box (Piece)	Bag (Piece)
15 x 1/2"	1832015012	80	2
15 x 3/8"	1832015038	80	2
22 x 3/4"	1832022034	40	2
28 x 1"	1832028100	20	2
35 x 1 1/4"	1832035114	12	2



Male Adapter

Dimensions (mm/inches)	Article Number	Box (Piece)	Bag (Piece)
15 x 1/2"	1801015012	150	10
15 x 3/4"	1801015034	80	10
15 x 3/8"	1801015038	50	10
22 x 1/2"	1801022012	24	4
23 x 3/4"	1801022034	20	4
22 x 1"	1801022100	10	2
28 x 3/4"	1801028034	2	1
28 x 1"	1801028100	1	1
35 x 1"	1801035100	1	1
35 x 1 1/4"	1801035114	1	1
42 x 1 1/2"	1801042112	1	1
54 x 2"	1801054200	1	1
66.7 x 2 1/2"	1801066212	1	1
76.1 x 2 1/2"	1801076212	1	1
88.9 x 3"	1801088300	1	1
108 x 4"	1801108400	1	1



Female Adapter

Dimensions (mm/inches)	Article Number	Box (Piece)	Bag (Piece)
15 x 1/2"	1802015012	150	10
15 x 3/4"	1802015034	80	10
15 x 3/8"	1802015038	50	10
22 x 1/2"	1802022012	24	4
23 x 3/4"	1802022034	20	4
22 x 1"	1802022100	10	2
28 x 3/4"	1802028034	2	1
28 x 1"	1802028100	1	1
35 x 1"	1802035100	1	1
35 x 1 1/4"	1802035114	1	1
42 x 1 1/2"	1802042112	1	1
54 x 2"	1802054200	1	1



Socket Reducer

Dimensions (mm)	Article Number	Box (Piece)	Bag (Piece)
22 x 15	184302215	120	10
28 x 15	184302815	80	10
28 x 22	184302822	60	10
35 x 22	184303522	40	10
35 x 28	184303528	32	4
42 x 22	184304222	24	4
42 x 28	184304228	24	4
42 x 35	184304235	12	2
54 x 22	184305422	12	2
54 x 28	184305428	12	2
54 x 35	184305435	3	1
54 x 42	184305442	1	1
66.7 x 28	184306628	1	1
66.7 x 35	184306635	1	1
66.7 x 42	184306642	1	1
66.7 x 54	184306654	1	1
76.1 x 42	184307642	1	1
76.1 x 54	184307654	1	1
76.1 x 66.7	184307666	1	1
88.9 x 54	184308854	1	1
88.9 x 76.1	184308876	1	1
108 x 54	184310854	1	1
108 x 66.7	184310866	1	1
108 x 76.1	184310876	1	1
108 x 88.9	184310888	1	1



Reducing Tee

Dimensions (mm)	Article Number	Box (Piece)	Bag (Piece)
22 x 15 x 22	18110221522	40	10
28 x 15 x 28	18110281528	30	10
28 x 22 x 28	18110282228	30	10
35 x 22 x 35	18110352235	16	4
35 x 28 x 35	18110352835	16	4
42 x 22 x 42	18110422242	10	2
42 x 28 x 42	18110422842	6	1
42 x 35 x 42	18110423542	2	1
54 x 22 x 54	18110542254	1	1
54 x 28 x 54	18110542854	1	1
54 x 35 x 54	18110543554	1	1
54 x 42 x 54	18110544254	1	1
66.7 x 28 x 66.7	18110662866	1	1
66.7 x 35 x 66.7	18110663566	1	1
66.7 x 42 x 66.7	18110664266	1	1
66.7 x 54 x 66.7	18110665466	1	1
76.1 x 22 x 76.1	18110762276	1	1
76.1 x 28 x 76.1	18110762876	1	1
76.1 x 35 x 76.1	18110763576	1	1
76.1 x 42 x 76.1	18110764276	1	1
76.1 x 54 x 76.1	18110765476	1	1
76.1 x 66.7 x 76.1	18110766676	1	1
88.9 x 54 x 88.9	18110885488	1	1
88.9 x 76.1 x 88.9	18110887688	1	1
108 x 54 x 108	181110854108	1	1
108 x 66.7 x 108	181110866108	1	1
108 x 76.1 x 108	181110876108	1	1
108 x 88.9 x 108	181110888108	1	1



Endcap

Dimensions (mm)	Article Number	Box (Piece)	Bag (Piece)
15	1841015	30	2
22	1841022	30	2
28	1841028	30	2
35	1841035	24	2
42	1841042	20	2
54	1841054	16	2
66.7	1841066	4	1
76.1	1841076	2	1
88.9	1841088	1	1
108	1841108	1	1



Wallplate Female

Dimensions (mm/inches)	Article Number	Box (Piece)	Bag (Piece)
15 x 1/2"	1834015012	50	2
22 x 3/4"	1834022034	30	2



Equal Tee

Dimensions (mm)	Article Number	Box (Piece)	Bag (Piece)
15 x 15 x 15	18100151515	80	10
22 x 22 x 22	18100222222	40	10
28 x 28 x 28	18100282828	24	4
35 x 35 x 35	18100353535	12	2
42 x 42 x 42	18100424242	8	2
54 x 54 x 54	18100545454	4	1
66.7 x 66.7 x 66.7	18100666666	2	1
76.1 x 76.1 x 76.1	18100767676	1	1
88.9 x 88.9 x 88.9	18100888888	1	1
108 x 108 x 108	1810108108108	1	1



Female Tee

Dimensions (mm/inches)	Article Number	Box (Piece)	Bag (Piece)
15 x 1/2" x 15	18120151215	60	10
15 x 3/8" x 15	18120153815	60	10
22 x 1/2" x 22	18120221222	40	10
22 x 3/4" x 22	18120223422	40	10
28 x 1/2" x 28	18120281228	30	10
28 x 3/4" x 28	18120283428	30	10
35 x 1/2" x 35	18120351235	16	4
35 x 3/4" x 35	18120353435	16	4
42 x 1/2" x 42	18120421242	10	2
42 x 3/4" x 42	18120423442	10	2
54 x 1/2" x 54	18120541254	1	1
54 x 3/4" x 54	18120543454	1	1
66.7 x 3/4" x 66.7	18120663466	1	1
76.1 x 3/4" x 76.1	18120763476	1	1
88.9 x 3/4" x 88.9	18120883488	1	1



Flange with Press Joint

Dimensions (mm)	Article Number	Box (Piece)	Bag (Piece)
22 PN16 DN20	1840022	1	1
28 PN16 DN25	1840028	1	1
35 PN16 DN32	1840035	1	1
42 PN16 DN40	1840042	1	1
54 PN16 DN50	1840054	1	1
66.7 PN16 DN65	1840066	1	1
76.1 PN16 DN65	1840076	1	1
88.9 PN16 DN80	1840088	1	1
108 PN16 DN100	1840108	1	1



Straight Coupling

Dimensions (mm)	Article Number	Box (Piece)	Bag (Piece)
15 x 15	190001515	150	10
22 x 22	190002222	80	10
28 x 28	190002828	50	10
35 x 35	190003535	24	4
42 x 42	190004242	20	2
54 x 54	190005454	12	2
66.7 x 66.7	190006666	3	1
76.1 x 76.1	190007676	3	1
88.9 x 88.9	190008888	2	1
108 x 108	1900108108	1	1



Slip Coupling

Dimensions (mm)	Article Number	Box (Piece)	Bag (Piece)
15 x 15	190401515	50	2
22 x 22	190402222	50	2
28 x 28	190402828	30	2
35 x 35	190403535	20	2
42 x 42	190404242	20	2
54 x 54	190405454	8	2
66.7 x 66.7	190406666	2	1
76.1 x 76.1	190407676	2	1
88.9 x 88.9	190408888	1	1
108 x 108	1904108108	1	1



Bend 90°

Dimensions (mm)	Article Number	Box (Piece)	Bag (Piece)
15 x 15	192001515	100	10
22 x 22	192002222	50	10
28 x 28	192002828	30	10
35 x 35	192003535	12	4
42 x 42	192004242	8	2
54 x 54	192005454	6	2
66.7 x 66.7	192006666	2	1
76.1 x 76.1	192007676	2	1
88.9 x 88.9	192008888	1	1
108 x 108	1920108108	1	1



Bend 90° Ø

Dimensions (mm)	Article Number	Box (Piece)	Bag (Piece)
15 x 15	192101515	100	10
22 x 22	192102222	50	10
28 x 28	192102828	30	10
35 x 35	192103535	12	4
42 x 42	192104242	8	2
54 x 54	192105454	6	2
66.7 x 66.7	192106666	2	1
76.1 x 76.1	192107676	2	1
88.9 x 88.9	192108888	1	1
108 x 108	1921108108	1	1



Bend 45°

Dimensions (mm)	Article Number	Box (Piece)	Bag (Piece)
15 x 15	192301515	120	10
22 x 22	192302222	60	10
28 x 28	192302828	30	10
35 x 35	192303535	20	4
42 x 42	192304242	12	2
54 x 54	192305454	6	2
66.7 x 66.7	192306666	2	1
76.1 x 76.1	192307676	2	1
88.9 x 88.9	192308888	1	1
108 x 108	1923108108	1	1



Bend 45° Ø

Dimensions (mm)	Article Number	Box (Piece)	Bag (Piece)
15 x 15	192401515	120	10
22 x 22	192402222	60	10
28 x 28	192402828	30	10
35 x 35	192403535	20	4
42 x 42	192404242	12	2
54 x 54	192405454	6	2
66.7 x 66.7	192406666	2	1
76.1 x 76.1	192407676	2	1
88.9 x 88.9	192408888	1	1
108 x 108	1924108108	1	1



Bend 90° Male

Dimensions (mm/inches)	Article Number	Box (Piece)	Bag (Piece)
15 x 1/2"	1931015012	80	2
15 x 3/8"	1931015038	80	2
22 x 3/4"	1931022034	40	2
28 x 1"	1931028100	20	2
35 x 1 1/4"	1931035114	12	2
42 x 1 1/2"	1931042112	8	2
54 x 2"	1931054200	4	1



Bend 90° Female

Dimensions (mm/inches)	Article Number	Box (Piece)	Bag (Piece)
15 x 1/2"	1932015012	80	2
15 x 3/8"	1932015038	80	2
22 x 3/4"	1932022034	40	2
28 x 1"	1932028100	20	2
35 x 1 1/4"	1932035114	12	2



Male Adapter

Dimensions (mm/inches)	Article Number	Box (Piece)	Bag (Piece)
15 x 1/2"	1901015012	150	10
15 x 3/4"	1901015034	80	10
15 x 3/8"	1901015038	50	10
22 x 1/2"	1901022012	24	4
23 x 3/4"	1901022034	20	4
22 x 1"	1901022100	10	2
28 x 3/4"	1901028034	2	1
28 x 1"	1901028100	1	1
35 x 1"	1901035100	1	1
35 x 1 1/4"	1901035114	1	1
42 x 1 1/2"	1901042112	1	1
54 x 2"	1901054200	1	1
66.7 x 2 1/2"	1901066212	1	1
76.1 x 2 1/2"	1901076212	1	1
88.9 x 3"	1901088300	1	1
108 x 4"	1901108400	1	1



Female Adapter

Dimensions (mm/inches)	Article Number	Box (Piece)	Bag (Piece)
15 x 1/2"	1901015012	150	10
15 x 3/4"	1902015034	80	10
15 x 3/8"	1902015038	50	10
22 x 1/2"	1902022012	24	4
23 x 3/4"	1902022034	20	4
22 x 1"	1902022100	10	2
28 x 3/4"	1902028034	2	1
28 x 1"	1902028100	1	1
35 x 1"	1902035100	1	1
35 x 1 1/4"	1902035114	1	1
42 x 1 1/2"	1902042112	1	1
54 x 2"	1902054200	1	1



Endcap

Dimensions (mm)	Article Number	Box (Piece)	Bag (Piece)
15	1941015	30	2
22	1941022	30	2
28	1941028	30	2
35	1941035	24	2
42	1941042	20	2
54	1941054	16	2
66.7	1941066	4	1
76.1	1941076	2	1
88.9	1941088	1	1
108	1941108	1	1



Wallplate Female

Dimensions (mm/inches)	Article Number	Box (Piece)	Bag (Piece)
15 x 1/2"	1934015012	50	2
22 x 3/4"	1934022034	30	2



Socket Reducer

Dimensions (mm)	Article Number	Box (Piece)	Bag (Piece)
22 x 15	194302215	120	10
28 x 15	194302815	80	10
28 x 22	194302822	60	10
35 x 22	194303522	40	10
35 x 28	194303528	32	4
42 x 22	194304222	24	4
42 x 28	194304228	24	4
42 x 35	194304235	12	2
54 x 22	194305422	12	2
54 x 28	194305428	12	2
54 x 35	194305435	3	1
54 x 42	194305442	1	1
66.7 x 28	194306628	1	1
66.7 x 35	194306635	1	1
66.7 x 42	194306642	1	1
66.7 x 54	194306654	1	1
76.1 x 42	194307642	1	1
76.1 x 54	194307654	1	1
76.1 x 66.7	194307666	1	1
88.9 x 54	194308854	1	1
88.9 x 76.1	194308876	1	1
108 x 54	194310854	1	1
108 x 66.7	194310866	1	1
108 x 76.1	194310876	1	1
108 x 88.9	194310888	1	1



Reducing Tee

Dimensions (mm)	Article Number	Box (Piece)	Bag (Piece)
22 x 15 x 22	19110221522	40	10
28 x 15 x 28	19110281528	30	10
28 x 22 x 28	19110282228	30	10
35 x 22 x 35	19110352235	16	4
35 x 28 x 35	19110352835	16	4
42 x 22 x 42	19110422242	10	2
42 x 28 x 42	19110422842	6	1
42 x 35 x 42	19110423542	2	1
54 x 22 x 54	19110542254	1	1
54 x 28 x 54	19110542854	1	1
54 x 35 x 54	19110543554	1	1
54 x 42 x 54	19110544254	1	1
66.7 x 28 x 66.7	19110662866	1	1
66.7 x 35 x 66.7	19110663566	1	1
66.7 x 42 x 66.7	19110664266	1	1
66.7 x 54 x 66.7	19110665466	1	1
76.1 x 22 x 76.1	19110762276	1	1
76.1 x 28 x 76.1	19110762876	1	1
76.1 x 35 x 76.1	19110763576	1	1
76.1 x 42 x 76.1	19110764276	1	1
76.1 x 54 x 76.1	19110765476	1	1
76.1 x 66.7 x 76.1	19110766676	1	1
88.9 x 54 x 88.9	19110885488	1	1
88.9 x 76.1 x 88.9	19110887688	1	1
108 x 54 x 108	191110854108	1	1
108 x 66.7 x 108	191110866108	1	1
108 x 76.1 x 108	191110876108	1	1
108 x 88.9 x 108	191110888108	1	1



Equal Tee

Dimensions (mm)	Article Number	Box (Piece)	Bag (Piece)
15 x 15 x 15	19100151515	80	10
22 x 22 x 22	19100222222	40	10
28 x 28 x 28	19100282828	24	4
35 x 35 x 35	19100353535	12	2
42 x 42 x 42	19100424242	8	2
54 x 54 x 54	19100545454	4	1
66.7 x 66.7 x 66.7	19100666666	2	1
76.1 x 76.1 x 76.1	19100767676	1	1
88.9 x 88.9 x 88.9	19100888888	1	1
108 x 108 x 108	1910108108108	1	1



Female Tee

Dimensions (mm/inches)	Article Number	Box (Piece)	Bag (Piece)
15 x 1/2" x 15	19120151215	60	10
15 x 3/8" x 15	19120153815	60	10
22 x 1/2" x 22	19120221222	40	10
22 x 3/4" x 22	19120223422	40	10
28 x 1/2" x 28	19120281228	30	10
28 x 3/4" x 28	19120283428	30	10
35 x 1/2" x 35	19120351235	16	4
35 x 3/4" x 35	19120353435	16	4
42 x 1/2" x 42	19120421242	10	2
42 x 3/4" x 42	19120423442	10	2
54 x 1/2" x 54	19120541254	1	1
54 x 3/4" x 54	19120543454	1	1
66.7 x 3/4" x 66.7	19120663466	1	1
76.1 x 3/4" x 76.1	19120763476	1	1
88.9 x 3/4" x 88.9	19120883488	1	1



Tap Connector

Dimensions (mm/inches)	Article Number	Box (Piece)	Bag (Piece)
15 x 1/2"	1907015012	30	2
15 x 3/4"	1907015034	30	2
22 x 1"	1907022100	30	2
28 x 1 1/4"	1907028114	24	2
35 x 1 1/2"	1907035112	24	2



Flange with Press Joint

Dimensions (mm)	Article Number	Box (Piece)	Bag (Piece)
22 PN16 DN20	1940022	1	1
28 PN16 DN25	1940028	1	1
35 PN16 DN32	1940035	1	1
42 PN16 DN40	1940042	1	1
54 PN16 DN50	1940054	1	1
66.7 PN16 DN65	1940066	1	1
76.1 PN16 DN65	1940076	1	1
88.9 PN16 DN80	1940088	1	1
108 PN16 DN100	1940108	1	1



Male Union Adapter - with Flat Seal

Dimensions (mm/inches)	Article Number	Box (Piece)	Bag (Piece)
15 x 1/2"	1908015012	10	2
22 x 3/4"	1908022034	10	2
28 x 1"	1908028100	10	2
35 x 1 1/4"	1908035114	8	2
42 x 1 1/2"	1908042112	8	2
54 x 2"	1908054200	4	2



Straight Coupling

Dimensions (mm)	Article Number	Box (Piece)	Bag (Piece)
139.7 x 139.7	1500139139	1	1
168.3 x 168.3	1500168168	1	1



Bend 90°

Dimensions (mm)	Article Number	Box (Piece)	Bag (Piece)
139.7 x 139.7	1520139139	1	1
168.3 x 168.3	1520168168	1	1



Bend 90°Ø

Dimensions (mm)	Article Number	Box (Piece)	Bag (Piece)
139.7 x 139.7	1521139139	1	1
168.3 x 168.3	1521168168	1	1



Bend 45°

Dimensions (mm)	Article Number	Box (Piece)	Bag (Piece)
139.7 x 139.7	1523139139	1	1
168.3 x 168.3	1521168168	1	1



Bend 45° Ø

Dimensions (mm)	Article Number	Box (Piece)	Bag (Piece)
139.7 x 139.7	1524139139	1	1
168.3 x 168.3	1524168168	1	1



Socket Reducer

Dimensions (mm)	Article Number	Box (Piece)	Bag (Piece)
139.7 x 108	1543139108	1	1
168.3 x 108	1543168108	1	1
168.3 x 139.7	1543168139	1	1



Equal Tee

Dimensions (mm)	Article Number	Box (Piece)	Bag (Piece)
139.7 x 139.7 x 139.7	1510139139139	1	1
168.3 x 168.3 x 168.3	1510168168168	1	1



Reducing Tee

Dimensions (mm)	Article Number	Box (Piece)	Bag (Piece)
139.7 x 108 x 139.7	1511139108139	1	1
168.3 x 108 x 168.3	1511168108168	1	1
168.3 x 139.7 x 168.3	1511168139168	1	1



Flange with Press Joint

Dimensions (mm)	Article Number	Box (Piece)	Bag (Piece)
139.7 PN16	1540139139	1	1
168.3 PN16	1540168168	1	1



Stainless Steel 304 MXL Gas Fittings

Straight Coupling

Dimensions (mm)	Article Number	Box (Piece)	Bag (Piece)
139.7 x 139.7	1800139139	1	1
168.3 x 168.3	1800168168	1	1



Bend 90°

Dimensions (mm)	Article Number	Box (Piece)	Bag (Piece)
139.7 x 139.7	1820139139	1	1
168.3 x 168.3	1820168168	1	1



Bend 90°Ø

Dimensions (mm)	Article Number	Box (Piece)	Bag (Piece)
139.7 x 139.7	1821139139	1	1
168.3 x 168.3	1821168168	1	1



Bend 45°

Dimensions (mm)	Article Number	Box (Piece)	Bag (Piece)
139.7 x 139.7	1823139139	1	1
168.3 x 168.3	1823168168	1	1



Bend 45° Ø

Dimensions (mm)	Article Number	Box (Piece)	Bag (Piece)
139.7 x 139.7	1824139139	1	1
168.3 x 168.3	1824168168	1	1



Socket Reducer

Dimensions (mm)	Article Number	Box (Piece)	Bag (Piece)
139.7 x 108	1843139108	1	1
168.3 x 108	1843168108	1	1
168.3 x 139.7	1843168139	1	1



Equal Tee

Dimensions (mm)	Article Number	Box (Piece)	Bag (Piece)
139.7 x 139.7 x 139.7	1810139139139	1	1
168.3 x 168.3 x 168.3	1810168168168	1	1



Reducing Tee

Dimensions (mm)	Article Number	Box (Piece)	Bag (Piece)
139.7 x 108 x 139.7	1811139108139	1	1
168.3 x 108 x 168.3	181168108168	1	1
168.3 x 139.7 x 168.3	181168108168	1	1



Flange with Press Joint

Dimensions (mm)	Article Number	Box (Piece)	Bag (Piece)
139.7 PN16	1840139139	1	1
168.3 PN16	1840168168	1	1



If you have any questions or to place an order, please contact us:

Straight Coupling

Dimensions (mm)	Article Number	Box (Piece)	Bag (Piece)
139.7 x 139.7	1900139139	1	1
168.3 x 168.3	1900168168	1	1



Bend 90°

Dimensions (mm)	Article Number	Box (Piece)	Bag (Piece)
139.7 x 139.7	1920139139	1	1
168.3 x 168.3	1920168168	1	1



Bend 90°Ø

Dimensions (mm)	Article Number	Box (Piece)	Bag (Piece)
139.7 x 139.7	1921139139	1	1
168.3 x 168.3	1921168168	1	1



Bend 45°

Dimensions (mm)	Article Number	Box (Piece)	Bag (Piece)
139.7 x 139.7	1923139139	1	1
168.3 x 168.3	1923168168	1	1



Bend 45° Ø

Dimensions (mm)	Article Number	Box (Piece)	Bag (Piece)
139.7 x 139.7	1924139139	1	1
168.3 x 168.3	1924168168	1	1



Socket Reducer

Dimensions (mm)	Article Number	Box (Piece)	Bag (Piece)
139.7 x 108	1943139108	1	1
168.3 x 108	1943168108	1	1
168.3 x 139.7	1943168139	1	1



Equal Tee

Dimensions (mm)	Article Number	Box (Piece)	Bag (Piece)
139.7 x 139.7 x 139.7	1910139139139	1	1
168.3 x 168.3 x 168.3	1910168168168	1	1



Reducing Tee

Dimensions (mm)	Article Number	Box (Piece)	Bag (Piece)
139.7 x 108 x 139.7	1911139108139	1	1
168.3 x 108 x 168.3	1911168108168	1	1
168.3 x 139.7 x 168.3	1911168139168	1	1



Flange with Press Joint

Dimensions (mm)	Article Number	Box (Piece)	Bag (Piece)
139.7 PN16	1940139139	1	1
168.3 PN16	1940168168	1	1



Carbon-Steel

Straight Coupling

Dimensions (mm)	Article Number	Box (Piece)	Bag (Piece)
15 x 15	230001515	150	10
22 x 22	230002222	80	10
28 x 28	230002828	50	10
35 x 35	230003535	24	4
42 x 42	230004242	20	2
54 x 54	230005454	12	2
66.7 x 66.7	230006666	3	1
76.1 x 76.1	230007676	3	1
88.9 x 88.9	230008888	2	1
108 x 108	2300108108	1	1



Slip Coupling

Dimensions (mm)	Article Number	Box (Piece)	Bag (Piece)
15 x 15	230401515	100	2
22 x 22	230402222	50	2
28 x 28	230402828	30	2
35 x 35	230403535	20	2
42 x 42	230404242	12	2
54 x 54	230405454	8	2
66.7 x 66.7	230406666	2	1
76.1 x 76.1	230407676	2	1
88.9 x 88.9	230408888	1	1
108 x 108	2304108108	1	1



Bend 90°

Dimensions (mm)	Article Number	Box (Piece)	Bag (Piece)
15 x 15	232001515	100	10
22 x 22	232002222	50	10
28 x 28	232002828	30	10
35 x 35	232003535	12	4
42 x 42	232004242	8	2
54 x 54	232005454	6	2
66.7 x 66.7	232006666	2	1
76.1 x 76.1	232007676	2	1
88.9 x 88.9	232008888	1	1
108 x 108	2320108108	1	1



Bend 90° Ø

Dimensions (mm)	Article Number	Box (Piece)	Bag (Piece)
15 x 15	232101515	100	10
22 x 22	232102222	50	10
28 x 28	232102828	30	10
35 x 35	232103535	12	4
42 x 42	232104242	8	2
54 x 54	232105454	6	2
66.7 x 66.7	232106666	2	1
76.1 x 76.1	232107676	2	1
88.9 x 88.9	232108888	1	1
108 x 108	2321108108	1	1



Bend 90° Male

Dimensions (mm/inches)	Article Number	Box (Piece)	Bag (Piece)
15 x 1/2"	2325015012	80	2
22 x 3/4"	2325022034	40	2
28 x 1"	2325028100	20	2
35 x 1 1/4"	2325035114	12	2
42 x 1 1/2"	2325042112	8	2
54 x 2"	2325054200	4	1



Bend 90° Female

Dimensions (mm/inches)	Article Number	Box (Piece)	Bag (Piece)
15 x 1/2"	2326015012	80	2
22 x 3/4"	2326022034	40	2
28 x 1"	2326028100	20	2
35 x 1 1/4"	2326035114	12	2



Bend 45°

Dimensions (mm)	Article Number	Box (Piece)	Bag (Piece)
15 x 15	232301515	120	10
22 x 22	232302222	60	10
28 x 28	232302828	30	10
35 x 35	232303535	20	4
42 x 42	232304242	12	2
54 x 54	232305454	6	2
66.7 x 66.7	232306666	2	1
76.1 x 76.1	232307676	2	1
88.9 x 88.9	232308888	1	1
108 x 108	2323108108	1	1



Bend 45° Ø

Dimensions (mm)	Article Number	Box (Piece)	Bag (Piece)
15 x 15	232401515	120	10
22 x 22	232402222	60	10
28 x 28	232402828	30	10
35 x 35	232403535	20	4
42 x 42	232404242	12	2
54 x 54	232405454	6	2
66.7 x 66.7	232406666	2	1
76.1 x 76.1	232407676	2	1
88.9 x 88.9	232408888	1	1
108 x 108	2324108108	1	1



If you have any questions or to place an order, please contact us:

Straight Adapter Male

Dimensions (mm/inches)	Article Number	Box (Piece)	Bag (Piece)
15 x 3/8"	2301015038	150	10
15 x 1/2"	2301015012	150	10
22 x 1/2"	2301022012	100	10
22 x 3/4"	2301022034	80	10
22 x 1"	2301022100	50	10
28 x 3/4"	2301028034	50	10
28 x 1"	2301028100	50	10
35 x 1"	2301035100	24	4
35 x 1 1/4"	2301035114	24	4
42 x 1 1/2"	2301042112	20	4
54 x 2"	2301054200	10	2
66.7 x 2 1/2"	2301066212	2	1
76.1 x 2 1/2"	2301076212	1	1
88.9 x 3"	2301088300	1	1



Straight Adapter Female

Dimensions (mm/inches)	Article Number	Box (Piece)	Bag (Piece)
15 x 1/2"	2302015012	120	10
22 x 1/2"	2302022012	100	10
22 x 3/4"	2302022034	80	10
22 x 1"	2302022100	50	10
28 x 1"	2302028100	50	10
35 x 1 1/4"	2302035114	24	4
42 x 1 1/2"	2302042112	24	4
54 x 2"	2302054200	10	2



Straight Reducer

Dimensions (mm)	Article Number	Box (Piece)	Bag (Piece)
22 x 15	230302215	100	2
28 x 15	230302815	60	2
28 x 22	230302822	50	2
35 x 28	230303528	24	2



Socket Reducer

Dimensions (mm)	Article Number	Box (Piece)	Bag (Piece)
22 x 15	234302215	120	10
28 x 15	234302815	80	10
28 x 22	234302822	60	10
35 x 22	234303522	40	10
35 x 28	234303528	32	4
42 x 22	234304222	24	4
42 x 28	234304228	24	4
42 x 35	234304235	24	4
54 x 22	234305422	12	2
54 x 28	234305428	12	2
54 x 35	234305435	12	2
54 x 42	234305442	12	2
66.7 x 42	234306642	3	1
66.7 x 54	234306654	3	1
76.1 x 42	234307642	3	1
76.1 x 54	234307654	3	1
76.1 x 66.7	234307666	3	1
88.9 x 54	234308854	1	1
88.9 x 76.1	234308876	1	1
108 x 66.7	2343010866	1	1
108 x 76.1	2343010876	1	1
108 x 88.9	2343010888	1	1



Straight Adapter Male

Dimensions (mm/inches)	Article Number	Box (Piece)	Bag (Piece)
15 x 1/2"	2345015012	150	2
22 x 3/4"	2345022034	80	2



Straight Adapter Female

Dimensions (mm/inches)	Article Number	Box (Piece)	Bag (Piece)
15 x 1/2"	2346015012	100	2
22 x 1/2"	2346022012	100	2
22 x 3/4"	2346022034	80	2



Endcap

Dimensions (mm)	Article Number	Box (Piece)	Bag (Piece)
15	2341015	60	2
22	2341022	50	2
28	2341028	40	2
35	2341035	24	2
42	2341042	20	2
54	2341054	16	2



T-Coupling Reduction

Dimensions (mm)	Article Number	Box (Piece)	Bag (Piece)
15 x 22 x 15	23112152215	50	10
22 x 28 x 22	23112222822	30	10



Reducing Tee (End)

Dimensions (mm)	Article Number	Box (Piece)	Bag (Piece)
22 x 15 x 15	23115221515	40	10
22 x 22 x 15	23115222215	40	10
28 x 22 x 22	23115282222	30	10
28 x 28 x 22	23115282822	20	5



Carbon-Steel

Equal Tee

Dimensions (mm)	Article Number	Box (Piece)	Bag (Piece)
15 x 15 x 15	23100151515	80	10
22 x 22 x 22	23100222222	40	10
28 x 28 x 28	23100282828	24	4
35 x 35 x 35	23100353535	12	2
42 x 42 x 42	23100424242	8	2
54 x 54 x 54	23100545454	4	1
66.7 x 66.7 x 66.7	23100666666	2	1
76.1 x 76.1 x 76.1	23100767676	1	1
88.9 x 88.9 x 88.9	23100888888	1	1
108 x 108 x 108	2310108108108	1	1



Female Tee

Dimensions (mm/inches)	Article Number	Box (Piece)	Bag (Piece)
15 x 1/2" x 15	23120151215	60	2
22 x 1/2" x 22	23120221222	40	2
22 x 3/4" x 22	23120223422	40	2
28 x 1/2" x 28	23120281228	30	2
28 x 3/4" x 28	23120283428	24	2
35 x 1/2" x 35	23120351235	16	2
35 x 3/4" x 35	23120353435	12	2
42 x 1/2" x 42	23120421242	10	2
42 x 3/4" x 42	23120423442	8	1
54 x 1/2" x 54	23120541254	6	1
54 x 3/4" x 54	23120543454	6	1
66.7 x 3/4" x 66.7	23120663466	2	1
76.1 x 3/4" x 76.1	23120763476	1	1
88.9 x 3/4" x 88.9	23120883488	1	1
108 x 3/4" x 108	231210834108	1	1



Reducing Tee

Dimensions (mm)	Article Number	Box (Piece)	Bag (Piece)
22 x 15 x 22	23110221522	40	10
28 x 15 x 28	23110281528	30	10
28 x 22 x 28	23110282228	30	10
35 x 15 x 35	23110351535	16	4
35 x 22 x 35	23110352235	16	4
35 x 28 x 35	23110352835	16	4
42 x 22 x 42	23110422242	12	4
42 x 28 x 42	23110422842	12	4
42 x 35 x 42	23110423542	10	2
54 x 22 x 54	23110542254	6	1
54 x 28 x 54	23110542854	6	1
54 x 35 x 54	23110543554	6	1
54 x 42 x 54	23110544254	6	1
66.7 x 28 x 66.7	23110662866	2	1
66.7 x 35 x 66.7	23110663566	2	1
66.7 x 42 x 66.7	23110664266	2	1
66.7 x 54 x 66.7	23110665466	2	1
76.1 x 22 x 76.1	23110762276	1	1
76.1 x 28 x 76.1	23110762876	1	1
76.1 x 35 x 76.1	23110763576	1	1
76.1 x 42 x 76.1	23110764276	1	1
76.1 x 54 x 76.1	23110765476	1	1
76.1 x 66.7 x 76.1	23110766676	1	1
88.9 x 54 x 88.9	23110885488	1	1
88.9 x 76.1 x 88.9	23110887688	1	1
108 x 54 x 108	231110854108	1	1
108 x 66.7 x 108	231110866108	1	1
108 x 76.1 x 108	231110876108	1	1
108 x 88.9 x 108	231110888108	1	1



Tap Connector

Dimensions (mm/inches)	Article Number	Box (Piece)	Bag (Piece)
15 x 3/4"	2307015034	50	2
22 x 1"	2307022100	50	2
28 x 1 1/4"	2307028114	40	2
35 x 1 1/2"	2307035112	24	2



Union with Flat Seal

Dimensions (mm/inches)	Article Number	Box (Piece)	Bag (Piece)
15 x 1/2"	2308015012	10	5
22 x 3/4"	2308022034	10	5
28 x 1"	2308028100	8	4
35 x 1 1/4"	2308035114	8	4
42 x 1 1/2"	2308042112	4	2
54 x 2"	2308054200	2	1



Flange with Press Joint

Dimensions (mm)	Article Number	Box (Piece)	Bag (Piece)
54 PN16 DN65	2340054	1	1
66.7 PN16 DN65	2340066	1	1
76.1 PN16 DN65	2340076	1	1
88.9 PN16 DN80	2340088	1	1
108 PN16 DN100	2340108	1	1



Elbow Transition Male

Dimensions (mm/inches)	Article Number	Box (Piece)	Bag (Piece)
15 x 1/2"	2331015012	80	2
22 x 3/4"	2331022034	50	2



By-Pass Bend $\varnothing \times \varnothing$

Dimensions (mm)	Article Number	Box (Piece)	Bag (Piece)
15 x 15	233601515	60	2
22 x 22	233602222	40	2
28 x 28	233602828	16	2



Bend 90° $\varnothing \times \varnothing$

Dimensions (mm)	Article Number	Box (Piece)	Bag (Piece)
15 x 15	233501515	60	2
22 x 22	233502222	40	2
28 x 28	233502828	20	2
35 x 35	233503535	6	2
42 x 42	233504242	2	1
54 x 54	233505454	2	1



If you have any questions or to place an order, please contact us:

Straight Coupling

Dimensions (mm)	Article Number	Box (Piece)	Bag (Piece)
15 x 15	270001515	150	10
22 x 22	270002222	80	10
28 x 28	270002828	50	10
35 x 35	270003535	24	4
42 x 42	270004242	20	2
54 x 54	270005454	12	2
66.7 x 66.7	270006666	3	1
76.1 x 76.1	270007676	3	1
88.9 x 88.9	270008888	2	1
108 x 108	2700108108	1	1



Slip Coupling

Dimensions (mm)	Article Number	Box (Piece)	Bag (Piece)
15 x 15	270401515	100	2
22 x 22	270402222	50	2
28 x 28	270402828	30	2
35 x 35	270403535	20	2
42 x 42	270404242	12	2
54 x 54	270405454	8	2
66.7 x 66.7	270406666	2	1
76.1 x 76.1	270407676	2	1
88.9 x 88.9	270408888	1	1
108 x 108	2704108108	1	1



Bend 90°

Dimensions (mm)	Article Number	Box (Piece)	Bag (Piece)
15 x 15	272001515	100	10
22 x 22	272002222	50	10
28 x 28	272002828	30	10
35 x 35	272003535	12	4
42 x 42	272004242	8	2
54 x 54	272005454	6	2
66.7 x 66.7	272006666	2	1
76.1 x 76.1	272007676	2	1
88.9 x 88.9	272008888	1	1
108 x 108	2720108108	1	1



Bend 90° Ø

Dimensions (mm)	Article Number	Box (Piece)	Bag (Piece)
15 x 15	272101515	100	2
22 x 22	272102222	50	2
28 x 28	272102828	30	2
35 x 35	272103535	12	2
42 x 42	272104242	8	2
54 x 54	272105454	6	2
66.7 x 66.7	272106666	2	1
76.1 x 76.1	272107676	2	1
88.9 x 88.9	272108888	1	1
108 x 108	2721108108	1	1



Bend 90° Male

Dimensions (mm/inches)	Article Number	Box (Piece)	Bag (Piece)
15 x 1/2"	2725015012	80	2
22 x 3/4"	2725022034	40	2
28 x 1"	2725028100	20	2
35 x 1 1/4"	2725035114	12	2
42 x 1 1/2"	2725042112	8	2
54 x 2"	2725054200	4	1



Bend 90° Female

Dimensions (mm/inches)	Article Number	Box (Piece)	Bag (Piece)
15 x 1/2"	2726015012	80	2
22 x 3/4"	2726022034	40	2
28 x 1"	2726028100	20	2
35 x 1 1/4"	2726035114	12	2



Bend 45°

Dimensions (mm)	Article Number	Box (Piece)	Bag (Piece)
15 x 15	272301515	120	10
22 x 22	272302222	60	10
28 x 28	272302828	30	10
35 x 35	272303535	20	4
42 x 42	272304242	12	2
54 x 54	272305454	6	2
66.7 x 66.7	272306666	2	1
76.1 x 76.1	272307676	2	1
88.9 x 88.9	272308888	1	1
108 x 108	2723108108	1	1



Bend 45° Ø

Dimensions (mm)	Article Number	Box (Piece)	Bag (Piece)
15 x 15	272401515	120	10
22 x 22	272402222	60	10
28 x 28	272402828	30	10
35 x 35	272403535	20	4
42 x 42	272404242	12	2
54 x 54	272405454	6	2
66.7 x 66.7	272406666	2	1
76.1 x 76.1	272407676	2	1
88.9 x 88.9	272408888	1	1
108 x 108	2724108108	1	1



Straight Adapter Male

Dimensions (mm/inches)	Article Number	Box (Piece)	Bag (Piece)
15 x 3/8"	2701015038	150	10
15 x 1/2"	2701015012	150	10
22 x 1/2"	2701022012	100	10
22 x 3/4"	2701022034	80	10
22 x 1"	2701022100	50	10
28 x 3/4"	2701028034	50	10
28 x 1"	2701028100	50	10
35 x 1"	2701035100	24	4
35 x 1 1/4"	2701035114	24	4
42 x 1 1/2"	2701042112	20	4
54 x 2"	2701054200	10	2
66.7 x 2 1/2"	2701066212	2	1
76.1 x 2 1/2"	2701076212	1	1
88.9 x 3"	2701088300	1	1



Straight Adapter Female

Dimensions (mm/inches)	Article Number	Box (Piece)	Bag (Piece)
15 x 1/2"	2702015012	120	10
22 x 1/2"	2702022012	100	10
22 x 3/4"	2702022034	80	10
22 x 1"	2702022100	50	10
28 x 1"	2702028100	50	10
35 x 1 1/4"	2702035114	24	4
42 x 1 1/2"	2702042112	24	4
54 x 2"	2702054200	10	2



Straight Reducer

Dimensions (mm)	Article Number	Box (Piece)	Bag (Piece)
22 x 15	270302215	100	10
28 x 15	270302815	60	10
28 x 22	270302822	50	10
35 x 28	270303528	24	4



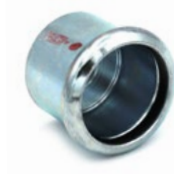
Socket Reducer

Dimensions (mm)	Article Number	Box (Piece)	Bag (Piece)
22 x 15	274302215	120	10
28 x 15	274302815	80	10
28 x 22	274302822	60	10
35 x 22	274303522	40	10
35 x 28	274303528	32	4
42 x 22	274304222	24	4
42 x 28	274304228	24	4
42 x 35	274304235	24	4
54 x 22	274305422	12	2
54 x 28	274305428	12	2
54 x 35	274305435	12	2
54 x 42	274305442	12	2
66.7 x 42	274306642	3	1
66.7 x 54	274306654	3	1
76.1 x 42	274307642	3	1
76.1 x 54	274307654	3	1
76.1 x 66.7	274307666	3	1
88.9 x 54	274308854	1	1
88.9 x 76.1	274308876	1	1
108 x 66.7	274310866	1	1
108 x 76.1	274310876	1	1
108 x 88.9	274310888	1	1



Endcap

Dimensions (mm)	Article Number	Box (Piece)	Bag (Piece)
15	2741015	60	2
22	2741022	50	2
28	2741028	40	2
35	2741035	24	2
42	2741042	20	2
54	2741054	16	2





Equal Tee

Dimensions (mm)	Article Number	Box (Piece)	Bag (Piece)
15 x 15 x 15	27100151515	80	10
22 x 22 x 22	27100222222	40	10
28 x 28 x 28	27100282828	24	4
35 x 35 x 35	27100353535	12	2
42 x 42 x 42	27100424242	8	2
54 x 54 x 54	27100545454	4	1
66.7 x 66.7 x 66.7	27100666666	2	1
76.1 x 76.1 x 76.1	27100767676	1	1
88.9 x 88.9 x 88.9	27100888888	1	1
108 x 108 x 108	2710108108108	1	1



Female Tee

Dimensions (mm/inches)	Article Number	Box (Piece)	Bag (Piece)
15 x 1/2" x 15	27120151215	60	2
22 x 1/2" x 22	27120221222	40	2
22 x 3/4" x 22	27120223422	40	2
28 x 1/2" x 28	27120281228	30	2
28 x 3/4" x 28	27120283428	24	2
35 x 1/2" x 35	27120351235	16	2
35 x 3/4" x 35	27120353435	12	2
42 x 1/2" x 42	27120421242	10	2
42 x 3/4" x 42	27120423442	8	1
54 x 1/2" x 54	27120541254	6	1
54 x 3/4" x 54	27120543454	6	1
66.7 x 3/4" x 66.7	27120663466	2	1
76.1 x 3/4" x 76.1	27120763476	1	1
88.9 x 3/4" x 88.9	27120883488	1	1
108 x 3/4" x 108	271210834108	1	1



Reducing Tee

Dimensions (mm)	Article Number	Box (Piece)	Bag (Piece)
22 x 15 x 22	27110221522	40	10
28 x 15 x 28	27110281528	30	10
28 x 22 x 28	27110282228	30	10
35 x 15 x 35	27110351535	16	4
35 x 22 x 35	27110352235	16	4
35 x 28 x 35	27110352835	16	4
42 x 22 x 42	27110422242	12	4
42 x 28 x 42	27110422842	12	4
42 x 35 x 42	27110423542	10	2
54 x 22 x 54	27110542254	6	1
54 x 28 x 54	27110542854	6	1
54 x 35 x 54	27110543554	6	1
54 x 42 x 54	27110544254	6	1
66.7 x 28 x 66.7	27110662866	2	1
66.7 x 35 x 66.7	27110663566	2	1
66.7 x 42 x 66.7	27110664266	2	1
66.7 x 54 x 66.7	27110665466	2	1
76.1 x 22 x 76.1	27110762276	1	1
76.1 x 28 x 76.1	27110762876	1	1
76.1 x 35 x 76.1	27110763576	1	1
76.1 x 42 x 76.1	27110764276	1	1
76.1 x 54 x 76.1	27110765476	1	1
76.1 x 66.7 x 76.1	27110766676	1	1
88.9 x 54 x 88.9	27110885488	1	1
88.9 x 76.1 x 88.9	27110887688	1	1
108 x 54 x 108	271110854108	1	1
108 x 66.7 x 108	271110866108	1	1
108 x 76.1 x 108	271110876108	1	1
108 x 88.9 x 108	271110888108	1	1



Tap Connector

Dimensions (mm/inches)	Article Number	Box (Piece)	Bag (Piece)
15 x 3/4"	2707015034	50	2
22 x 1"	2707022100	50	2
28 x 1 1/4"	2707028114	40	2
35 x 1 1/2"	2707035112	24	2



Union with Flat Seal (During Q2-2014)

Dimensions (mm/inches)	Article Number	Box (Piece)	Bag (Piece)
15 x 1/2"	2708015012	10	2
22 x 3/4"	2708022034	10	2
28 x 1"	2708028100	8	2
35 x 1 1/4"	2708035114	8	2
42 x 1 1/2"	2708042112	4	2
54 x 2"	2708054200	2	1



Flange with Press Joint

Dimensions (mm)	Article Number	Box (Piece)	Bag (Piece)
54 PN16 DN65	2740054	1	1
66.7 PN16 DN65	2740066	1	1
76.1 PN16 DN65	2740076	1	1
88.9 PN16 DN80	2740088	1	1
108 PN16 DN100	2740108	1	1



Elbow Transition Male

Dimensions (mm/inches)	Article Number	Box (Piece)	Bag (Piece)
15 x 1/2"	2731015012	80	2
22 x 3/4"	2731022034	50	2



T-Coupling Reduction

Dimensions (mm)	Article Number	Box (Piece)	Bag (Piece)
15 x 22 x 15	27112152215	50	10
22 x 28 x 22	27112222822	30	10



Reducing Tee (End)

Dimensions (mm)	Article Number	Box (Piece)	Bag (Piece)
22 x 15 x 15	27115221515	40	10
22 x 22 x 15	27115222215	40	10
28 x 22 x 22	27115282222	30	10
28 x 28 x 22	27115282822	20	5



HD-Press

Straight Coupling

Dimensions (inches)	Article Number	Box (Qty)	Bag (Qty)
1/2" x 1/2"	28000012012	50	10
3/4" x 3/4"	28000034034	40	5
1" x 1"	28000100100	30	5
1 1/2" x 1 1/2"	28000112112	12	1
1 1/4" x 1 1/4"	28000114114	12	1
2" x 2"	28000200200	7	1



Straight Male Adapter

Dimensions (inches)	Article Number	Box (Qty)	Bag (Qty)
1/2" x 1/2"	28010012012	90	10
3/4" x 3/4"	28010034034	50	5
1" x 1"	28010100100	30	5
1 1/2" x 1 1/2"	28010112112	12	1
1 1/4" x 1 1/4"	28010114114	15	1
2" x 2"	28010200200	8	1



Straight Female Adapter

Dimensions (inches)	Article Number	Box (Qty)	Bag (Qty)
1/2" x 1/2"	28020012012	90	10
3/4" x 3/4"	28020034034	50	5
1" x 1"	28020100100	30	5
1 1/2" x 1 1/2"	28020112112	12	1
1 1/4" x 1 1/4"	28020114114	15	1
2" x 2"	28020200200	8	1



Straight Reducer

Dimensions (inches)	Article Number	Box (Qty)	Bag (Qty)
3/4" x 1/2"	28030034012	40	5
1" x 3/4"	28030100034	30	5



Slip Coupling

Dimensions (inches)	Article Number	Box (Qty)	Bag (Qty)
1/2" x 1/2"	28040012012	60	10
3/4" x 3/4"	28040034034	40	5
1" x 1"	28040100100	30	5
1 1/2" x 1 1/2"	28040112112	12	1
1 1/4" x 1 1/4"	28040114114	12	1
2" x 2"	28040200200	6	1



Union Adapter

Dimensions (inches)	Article Number	Box (Qty)	Bag (Qty)
1/2" x 1/2"	28080012012	10	2
3/4" x 3/4"	28080034034	10	2
1" x 1"	28080100100	8	1
1 1/2" x 1 1/2"	28080112112	4	1
1 1/4" x 1 1/4"	28080114114	8	1
2" x 2"	28080200200	4	1



Equal Tee

Dimensions (inches)	Article Number	Box (Qty)	Bag (Qty)
1/2" x 1/2" x 1/2"	2810012012012	25	5
3/4" x 3/4" x 3/4"	2810034034034	15	5
1" x 1" x 1"	2810100100100	10	1
1 1/2" x 1 1/2" x 1 1/2"	2810112112112	5	1
1 1/4" x 1 1/4" x 1 1/4"	2810114114114	5	1
2" x 2" x 2"	2810200200200	3	1



Reducing Tee

Dimensions (inches)	Article Number	Box (Qty)	Bag (Qty)
3/4" x 1/2" x 3/4"	2811034012034	20	5
1" x 1/2" x 1"	2811100012100	10	1
1" x 3/4" x 1"	2811100034100	10	1
1 1/2" x 1" x 1 1/2"	2811112100112	5	1
1 1/2" x 1 1/4" x 1 1/2"	2811112114112	5	1
1 1/4" x 3/4" x 1 1/4"	2811114034114	7	1
1 1/4" x 1" x 1 1/4"	2811114100114	7	1
2" x 1" x 2"	2811200100200	3	1
2" x 1 1/2" x 2"	2811200112200	3	1
2" x 1 1/4" x 2"	2811200114200	3	1



Female Tee

Dimensions (inches)	Article Number	Box (Qty)	Bag (Qty)
1/2" x 1/2" x 1/2"	281201212012	25	5
3/4" x 1/2" x 3/4"	281203412034	20	5
1" x 1/2" x 1"	281210012100	10	1
1" x 3/4" x 1"	281210034100	10	1
1 1/2" x 1/2" x 1 1/2"	281211212112	5	1
1 1/2" x 3/4" x 1 1/2"	281211234112	5	1
1 1/4" x 1/2" x 1 1/4"	281211412114	7	1
1 1/4" x 3/4" x 1 1/4"	281211434114	7	1
2" x 1/2" x 2"	281220012200	3	1
2" x 3/4" x 2"	281220034200	3	1



Bend 90°

Dimensions (inches)	Article Number	Box (Qty)	Bag (Qty)
1/2" x 1/2"	28200012012	40	5
3/4" x 3/4"	28200034034	30	5
1" x 1"	28200100100	15	1
1 1/2" x 1 1/2"	28200112112	7	1
1 1/4" x 1 1/4"	28200114114	8	1
2" x 2"	28200200200	4	1



If you have any questions or to place an order, please contact us:

Bend 90° Ø

Dimensions (inches)	Article Number	Box (Qty)	Bag (Qty)
1/2" x 1/2"	28210012012	50	5
3/4" x 3/4"	28210034034	30	5
1" x 1"	28210100100	15	1
1 1/2" x 1 1/2"	28210112112	6	1
1 1/4" x 1 1/4"	28210114114	10	1
2" x 2"	28210200200	4	1



Bend 45°

Dimensions (inches)	Article Number	Box (Qty)	Bag (Qty)
1/2" x 1/2"	28230012012	50	5
3/4" x 3/4"	28230034034	30	5
1" x 1"	28230100100	20	5
1 1/2" x 1 1/2"	28230112112	8	1
1 1/4" x 1 1/4"	28230114114	10	1
2" x 2"	28230200200	6	1



Bend 45° Ø

Dimensions (inches)	Article Number	Box (Qty)	Bag (Qty)
1/2" x 1/2"	28240012012	50	5
3/4" x 3/4"	28240034034	40	5
1" x 1"	28240100100	15	1
1 1/2" x 1 1/2"	28240112112	8	1
1 1/4" x 1 1/4"	28240114114	12	1
2" x 2"	28240200200	6	1



Flange

Dimensions (inches)	Article Number	Box (Qty)	Bag (Qty)
1 1/2" DN40 PN16	28400112000	2	1
1 1/4" DN32 PN16	28400114000	2	1
2" DN50 PN16	28400200000	2	1



End Cap

Dimensions (inches)	Article Number	Box (Qty)	Bag (Qty)
1/2"	28410012000	120	10
3/4"	28410034000	80	10
1"	28410100000	50	5
1 1/2"	28410112000	15	1
1 1/4"	28410114000	24	1
2"	28410200000	12	1



Fitting Reducer

Dimensions (inches)	Article Number	Box (Qty)	Bag (Qty)
3/4" x 1/2"	28430034012	50	5
1" x 1/2"	28430100012	40	5
1" x 3/4"	28430100034	30	5
1 1/2" x 3/4"	28430112034	20	1
1 1/2" x 1"	28430112100	20	1
1 1/2" x 1 1/4"	28430112114	20	1
1 1/4" x 3/4"	28430114034	30	1
1 1/4" x 1"	28430114100	25	1
2" x 1"	28430200100	12	1
2" x 1 1/2"	28430200112	12	1
2" x 1 1/4"	28430200114	12	1



Valves

Brass Ball Valve - Press Fit Ends

Product Description (Dimensions mm/inches)	Part Number
M-Press 15mm x1/2" Lever Ball Valve Blue Handle	GP60015012PPBH
M-Press 15mm x1 /2" Lever Ball Valve Red Handle	GP60015012PPRH
M-Press 15mm x 1/2" Lever Ball Valve Dual Handle	GP60015012PP
M-Press 15mm Lever Ball Valve Blue Handle	GP60015PPBH
M-Press 15mm Lever Ball Valve Red Handle	GP60015PPRH
M-Press 15mm Lever Ball Valve Dual Handle	GP60015PP
M-Press 22mm x 3/4" Lever Ball Valve Blue Handle	GP60022034PPBH
M-Press 22mm x 3/4" Lever Ball Valve Red Handle	GP60022034PPRH
M-Press 22mm x 3/4" Lever Ball Valve Dual Handle	GP60022034PP
M-Press 22mm Lever Ball Valve Blue Handle	GP60022PPBH
M-Press 22mm Lever Ball Valve Red Handle	GP60022PPRH
M-Press 22mm Lever Ball Valve Dual Handle	GP60022PP
M-Press 28mm x 1" Lever Ball Valve Blue Handle	GP60028001PPBH
M-Press 28mm x 1" Lever Ball Valve Red Handle	GP60028001PPRH
M-Press 28mm x 1" Lever Ball Valve Dual Handle	GP60028001PP
M-Press 28mm Lever Ball Valve Blue Handle	GP60028PPBH
M-Press 28mm Lever Ball Valve Red Handle	GP60028PPRH
M-Press 28mm Lever Ball Valve Dual Handle	GP60028PP
M-Press 35mm x 11/4" Lever Ball Valve Blue	GP60035114PFBH
M-Press 35mm x 11/4" Lever Ball Valve Red	GP60035114PFRH
M-Press 35mm x 11/4" Lever Ball Valve Dual Handle	GP60035114PF
M-Press 35mm Lever Ball Valve Blue Handle	GP60035PPBH
M-Press 35mm Lever Ball Valve Red Handle	GP60035PPRH
M-Press 35mm Lever Ball Valve Dual Handle	GP60035PP
M-Press 42mm x 11/2" Lever Ball Valve Blue	GP60042112PFBH
M-Press 42mm x 11/2" Lever Ball Valve Red	GP60042112PFRH
M-Press 42mm x 11/2" Lever Ball Valve Dual Handle	GP60042112PF
M-Press 42mm Lever Ball Valve Blue Handle	GP60042PPBH
M-Press 42mm Lever Ball Valve Red Handle	GP60042PPRH
M-Press 42mm Lever Ball Valve Dual Handle	GP60042PP
M-Press 54mm x 2" Lever Ball Valve Blue	GP600542PFBH
M-Press 54mm x 2" Lever Ball Valve Red	GP600542PFRH
M-Press 54mm x 2" Lever Ball Valve Dual Handle	GP600542PF
M-Press 54mm Lever Ball Valve Blue	GP60054PPBH
M-Press 54mm Lever Ball Valve Red	GP60054PPRH
M-Press 54mm Lever Ball Valve Dual Handle	GP60054PP



Stainless Steel Ball Valves

Product Description (Dimensions mm)	Part Number
M-Press 15mm Lever Black Handle	SS60015BH
M-Press 22mm Lever Black Handle	SS60022BH
M-Press 28mm Lever Black Handle	SS60028BH
M-Press 35mm Lever Black Handle	SS60035BH
M-Press 42mm Lever Black Handle	SS60042BH
M-Press 54mm Lever Black Handle	SS60054BH

Stainless Steel Ball Valves (GAS)

Product Description (Dimensions mm)	Part Number
M-Press 15mm Lever Yellow Handle	SS60015YH
M-Press 22mm Lever Yellow Handle	SS60022YH
M-Press 28mm Lever Yellow Handle	SS60028YH
M-Press 35mm Lever Yellow Handle	SS60035YH
M-Press 42mm Lever Yellow Handle	SS60042YH
M-Press 54mm Lever Yellow Handle	SS60054YH



If you have any questions or to place an order, please contact us:

Stainless Steel Pipe - Series 1

Product Description (Dimensions mm)	Product Code	
	3 mtr	6 mtr
Press-INOX series 1 pipe 15 x 0.6	129501506-3MTR	129501506
Press-INOX series 1 pipe 22 x 0.7	129502207-3MTR	129502207
Press-INOX series 1 pipe 28 x 0.8	129502808-3MTR	129502808
Press-INOX series 1 pipe 35 x 1.0	129503510-3MTR	129503510
Press-INOX series 1 pipe 42 x 1.1	129504211-3MTR	129504211
Press-INOX series 1 pipe 54 x 1.2	129505412-3MTR	129505412
Press-INOX series 1 pipe 66.7 x 1.2	129506712-3MTR	129506712
Press-INOX series 1 pipe 76.1 x 1.5	129507615-3MTR	129507615
Press-INOX series 1 pipe 88.9 x 1.5	129508815-3MTR	129508815



Stainless Steel Pipe - Series 2

Product Description (Dimensions mm)	Product Code	
	3 mtr	6 mtr
Press-INOX series 2 pipe 15 x 1.0	129001510-3MTR	129001510
Press-INOX series 2 pipe 22 x 1.2	129002212-3MTR	129002212
Press-INOX series 2 pipe 28 x 1.2	129002812-3MTR	129002812
Press-INOX series 2 pipe 35 x 1.5	129003515-3MTR	129003515
Press-INOX series 2 pipe 42 x 1.5	129004215-3MTR	129004215
Press-INOX series 2 pipe 54 x 1.5	129005415-3MTR	129005415
Press-INOX series 2 pipe 66.7 x 1.5	129006615-3MTR	129006615
Press-INOX series 2 pipe 76.1 x 2.0	129007620-3MTR	129007620
Press-INOX series 2 pipe 88.9 x 2.0	129008820-3MTR	129008820
Press-INOX series 2 pipe 108 x 2.0	129010820-3MTR	129010820
Press-INOX series 2 pipe 139.7 x 2.0	129013920-3MTR	129013920
Press-INOX series 2 pipe 168.3 x 2.0	129016820-3MTR	129016820

Stainless Steel Pipe - 304

Product Description (Dimensions mm)	Product Code	
	3 mtr	6 mtr
Press-INOX 304 pipe 15 x 0.6	129401506-3MTR	129401506
Press-INOX 304 pipe 22 x 0.7	129402207-3MTR	129402207
Press-INOX 304 pipe 28 x 0.8	129402808-3MTR	129402808
Press-INOX 304 pipe 35 x 1.0	129403510-3MTR	129403510
Press-INOX 304 pipe 42 x 1.1	129404211-3MTR	129404211
Press-INOX 304 pipe 54 x 1.2	129405412-3MTR	129405412
Press-INOX 304 pipe 66.7 x 1.5	129406615-3MTR	129406615
Press-INOX 304 pipe 76.1 x 1.5	129407615-3MTR	129407615
Press-INOX 304 pipe 88.9 x 1.5	129408815-3MTR	129408815
Press-INOX 304 pipe 108 x 2.0	129410820-3MTR	129410820

Pipes

Carbon Steel Press Pipe - Out Plated

Product Description (Dimensions mm)	Product Code	
	3 mtr	6 mtr
Press- STEEL PIPE 15 x 1.2	239001512-3MTR	239001512
Press- STEEL PIPE 22 x 1.5	239002212-3MTR	239002212
Press- STEEL PIPE 28 x 1.5	239002815-3MTR	239002815
Press- STEEL PIPE 35 x 1.5	239003515-3MTR	239003515
Press- STEEL PIPE 42 x 1.5	239004215-3MTR	239004215
Press- STEEL PIPE 54 x 1.5	239005415-3MTR	239005415
Press- STEEL PIPE 66.7 x 1.5	239006615-3MTR	239006615
Press- STEEL PIPE 76.1 x 2.0	239007621-3MTR	239007620
Press- STEEL PIPE 88.9 x 2.0	239008820-3MTR	239008820
Press- STEEL PIPE 108 x 2.0	239010820-3MTR	239010820



Carbon Steel Press Pipe - In and Out Plated

Product Description (Dimensions mm)	Product Code	
	3 mtr	6 mtr
Press- STEEL PIPE I/O 15 x 1.2	239801512-3MTR	239801512
Press- STEEL PIPE I/O 22 x 1.5	239802215-3MTR	239802215
Press- STEEL PIPE I/O 28 x 1.5	239802815-3MTR	239802815
Press- STEEL PIPE I/O 35 x 1.5	239803515-3MTR	239803515
Press- STEEL PIPE I/O 42 x 1.5	239804215-3MTR	239804215
Press- STEEL PIPE I/O 54 x 1.5	239805415-3MTR	239805415
Press- STEEL PIPE I/O 66.7 x 1.5	239806615-3MTR	239806615
Press- STEEL PIPE I/O 76.1 x 2.0	239807620-3MTR	239807620
Press- STEEL PIPE I/O 88.9 x 2.0	239808920-3MTR	239808920
Press- STEEL PIPE I/O 108 x 2.0	239810820-3MTR	239810820

If you have any questions or to place an order, please contact us:

Gas

Product Description	Part Code			
	Single	Pack of 10	Pack of 50	Pack of 100
M-Press 15mm Yellow O-Ring Gas Seal	1286015			1286015-100
M-Press 22mm Yellow O-Ring Gas Seal	1286022			1286022-100
M-Press 28mm Yellow O-Ring Gas Seal	1286028			1286028-100
M-Press 35mm Yellow O-Ring Gas Seal	1286035			1286035-100
M-Press 42mm Yellow O-Ring Gas Seal	1286042		1286042-50	
M-Press 54mm Yellow O-Ring Gas Seal	1286054		1286054-50	
M-Press 66.7mm Yellow O-Ring Gas Seal	1286066	1286066-10		
M-Press 76.1mm Yellow O-Ring Gas Seal	1286076	1286076-10		
M-Press 88.9mm Yellow O-Ring Gas Seal	1286088	1286088-10		
M-Press 108mm Yellow O-Ring Gas Seal	1286108	1286108-10		
M-Press 139.7mm Yellow O-Ring Gas Seal	1286139			
M-Press 168.3mm Yellow O-Ring Gas Seal	1286168			



FKM Industry

Product Description	Part Code			
	Single	Pack of 10	Pack of 50	Pack of 100
M-Press 15mm Green O-Ring FKM Seal	1284015			1284015-100
M-Press 22mm Green O-Ring FKM Seal	1284022			1284022-100
M-Press 28mm Green O-Ring FKM Seal	1284028			1284028-100
M-Press 35mm Green O-Ring FKM Seal	1284035			1284035-100
M-Press 42mm Green O-Ring FKM Seal	1284042		1284042-50	
M-Press 54mm Green O-Ring FKM Seal	1284054		1284054-50	
M-Press 66.7mm Green O-Ring FKM Seal	1284066	1284066-10		
M-Press 76.1mm Green O-Ring FKM Seal	1284076	1284076-10		
M-Press 88.9mm Green O-Ring FKM Seal	1284088	1284088-10		
M-Press 108mm Green O-Ring FKM Seal	1284108	1284108-10		
M-Press 139.7mm Green O-Ring FKM Seal	1284139			
M-Press 168.3mm Green O-Ring FKM Seal	1284168			



NOVOPRESS ACO103 BT Battery Pressing Tool - Mini

Description	Part Number	Box (Piece)	Pressing System
NovoPress ACO103 BT – 12V-2.0Ah 1 Battery, 1 Charger, No press-jaws	4860580-50	1	M
SET NovoPress ACO103 BT – 12V-2.0Ah 1 Battery, 1 Charger, 4 press-jaws M15-M35	486268062-50	1	M



M Profile Press Jaws

Description	Part Number	Box (Piece)	Pressing System
15mm	48044-50	1	M
22mm	48046-50	1	M
28mm	48047-50	1	M
35mm	48048-50	1	M



U Profile Press Jaws

Description	Part Number	Box (Piece)	Pressing System
16mm	48066-50	1	U
20mm	48068-50	1	U
25mm	48069-50	1	U



NOVOPRESS ACO203 BT Battery Pressing Tool

Description	Part Number	Box (Piece)	Pressing System
NovoPress ACO203 BT 18V-5.0Ah 1 Battery, 1 Charger, No press-jaws	4715480-50	1	M
NovoPress ACO203 BT 18V-2.0Ah 2 Battery, 1 Charger, 4 press-jaws (15, 22, 28, 35mm)	4716580-50	1	M



M Profile Press Jaws

Description	Part Number	Box (Piece)	Pressing System
15mm	47570-50	1	M
22mm	47572-50	1	M
28mm	47573-50	1	M
35mm	47574-50	1	M
42mm (42mm M-Profile Snap-On)	48585-50	1	M
54mm (54mm M-Profile Snap-On)	48633-50	1	M



Intermediate Jaw

Description	Part Number	Box (Piece)	Pressing System
42mm & 54mm	43610-50	1	M



Standard Slings

Description	Part Number	Box (Piece)	Pressing System
SET 42M, 54M & Intermediate Toolbox	48960-50	1	M



U Profile Press Jaws

Description	Part Number	Box (Piece)	Pressing System
16mm	48145-50	1	U
20mm	48147-50	1	U
25mm	48148-50	1	U
32mm	48149-50	1	U



NOVOPRESS ACO203 XL BT Battery 18V Pressing Tool

Product Description	Part Number	Box (Piece)	Pressing System
NovoPress ACO203-XL BT 18V-3.0Ah 2 Battery, 1 Charger, No press-jaws	471788062-50	1	M
SET NovoPress ACO203-XL BT 18V-3.0Ah 2 Battery, 1 Charger with 4 press-jaws M15-M35	485658062-50	1	M



M Profile Press Jaws

Product Description	Part Number	Box (Piece)	Pressing System
15mm	47569-50	1	M
22mm	47572-50	1	M
28mm	47573-50	1	M
35mm	47574-50	1	M
42mm (42mm M-Profile Snap-On)	48585-50	1	M
54mm (54mm M-Profile Snap-On)	48633-50	1	M



Intermediate Jaw

Product Description	Part Number	Box (Piece)	Pressing System
42mm & 54mm	43610-50	1	M



Standard Slings

Product Description	Part Number	Box (Piece)	Pressing System
SET 42M & 54M & Intermediate Toolbox	44003-50	1	M



Intermediate Jaw in case

Product Description	Part Number	Box (Piece)	Pressing System
66.7, 76.1, 88.9 & 108-1	47948-50	1	M
108-2	47949-50	1	M



Snap-ons

Product Description	Part Number	Box (Piece)	Pressing System
66.7mm	48635-50	1	M
76.1mm	44345-50	1	M
88.9mm	44346-50	1	M
108mm	44347-50	1	M



Complete Tool Sets

Product Description	Part Number	MOQ
Complete MAP215 tool with 3x M-profile jaws (15,22,28) M-Press branded	MAP215CLMPRS3-KIT	1
Complete MAP219 tool with 4x M-profile jaws (15,22,28,35) M-Press branded	MAP219CLMPRS4-KIT	1



UAP332KN Tool - For sizes 15-54mm

Product Description	Part Number	MOQ
UAP332KN tool in case, one battery (KL), mains charger and plastic case, no jaws M-Press branded. For sizes 15-54mm	UAP332CLMPR	1



UAP432KN Tool - For sizes 15-108mm

Product Description	Part Number	MOQ
UAP432KN tool in case, one battery (KL), mains charger and plastic case, no jaws M-Press branded. For sizes 15-108mm	UAP432CLMPR	1



MAP215 - M Profile Press Jaws

Product Description	Part Number	MOQ
15mm	SBM15MMPR	1
22mm	SBM22MMPR	1
28mm	SBM28MMPR	1



MAP219 - M Profile Press Jaws

Product Description	Part Number	MOQ
15mm	SBMX15MMPR	1
22mm	SBMX22MMPR	1
28mm	SBMX28MMPR	1
35mm	SBMX35MMPR	1



UAP332KN & UAP432KN - M Profile Press Jaws

Product Description	Part Number	MOQ
15mm	SB15MMPR	1
22mm	SB22MMPR	1
28mm	SB28MMPR	1
35mm	SB35MMPR	1



MAP215 - U Profile Jaws

Product Description	Part Number	MOQ
16mm	SBM16NU	1
20mm	SBM20NU	1
25mm	SBM25NU	1
32mm	SBM32NU	1



Individual Slings

Product Description	Part Number	MOQ
42 SLING	QC42M	1
54 SLING	QC54M	1
42/54 ADAPTER	SBKQC (adapter)	1



MAP219 - U Profile Jaws

Product Description	Part Number	MOQ
20mm	SBMX20U	1
25mm	SBMX25U	1
32mm	SBMX32U	1
40mm	SBMX40U	1



Individual Slings

Product Description	Part Number	MOQ
66.7 SLING	BP667LP	1
76.1 SLING	BP761LP	1
88.9 SLING	BP889LP	1
108 SLING	BP108LP	1
66.7/76.1/88.9/108 ADAPTER	SBKUAP4 (adapter)	1



Accessories

Spare Battery Suitable for Novopress ACO103

Article Number

NOVOBATTERY



Spare Battery Suitable for M-Press Tools

Article Number

MPRESSBATTERY



Depth Gauge

Article Number

DEPTHGAUGE



Muc Off Lubricant

Article Number

MUCLUBE



Manual Deburring Tool

Article Number

DEBTOOL



Manual Pipe Cutter (5mm - 42mm)

Article Number

PIPECUTTER



1. Application and entire agreement

1.1 These Terms and Conditions will apply to the purchase of the goods detailed in our quotation (Goods) by the buyer (you) from M-Press Fittings Ltd a company registered in England and Wales under number 08760787 whose registered office is at Unit B, Trident Business Park, Neptune Way, Huddersfield, HD2 1UA (we or us).

1.2 These Terms and Conditions will be deemed to have been accepted by you when you accept them or the quotation or from the date of any delivery of the Goods (whichever happens earlier) and will constitute the entire agreement between us and you.

1.3 These Terms and Conditions and the quotation (together, the Contract) apply to the purchase and sale of any Goods between us and you, to the exclusion of any other terms that you try to impose or incorporate, or which are implied by trade, custom, practice or course of dealing.

2. Interpretation

2.1 A "business day" means any day other than a Saturday, Sunday, or bank holiday.

2.2 The headings in these Terms and Conditions are for convenience only and will not affect their interpretation.

2.3 Words imparting the singular number include the plural and vice-versa.

3. Goods

3.1 The description of the Goods is set out in our sales documentation, unless expressly changed in our quotation. In accepting the quotation, you acknowledge that you have not relied upon any statement, promise or other representations about the Goods by us. Descriptions of the Goods set out in our sales documentation are intended as a guide only.

3.2 We can make any changes to the specification of the Goods which are required to conform to any applicable safety or other statutory or regulatory requirements.

4. Price

4.1 The price (Price) of the Goods is set out in our offer current at the date of your order or such other price as we may agree in writing.

4.2 If the cost of the Goods to us increases due to any factor beyond our control including, but not limited to, material costs, labour costs, alteration of exchange rates or duties, or changes to delivery rates, we can increase the price prior to delivery.

4.3 Any increase in the Price under the clause above will only take place after we have told you about it.

4.4 You may be entitled to discounts. All discounts will be at our discretion.

4.5 The Price is of fees for packaging and transportation / delivery.

4.6 The Price is exclusive of any applicable VAT and other taxes or levies which are imposed or charged by any competent authority.

5. Cancellation and alteration

5.1 Details of the Goods as described in the clause above (Goods) and set out in our sales documentation are subject to alteration without notice and are not a contractual offer to sell the Goods which is capable of acceptance.

5.2 The quotation (including any non-standard price negotiated in accordance with the clause on Price (above)) is valid for a period of 14 days only from the date shown in it unless expressly withdrawn by us at an earlier time.

5.3 Either of us can cancel the order for any reason prior to your acceptance (or rejection) of the quotation.

6. Payment

6.1 We will invoice you for the Price either: on or at any time after delivery of the Goods; or where the Goods are to be collected by you or where you wrongfully do not take delivery of the Goods, at any time after we have notified you that the Goods are ready for collection, or we have tried to deliver them.

6.2 You must pay the Price within 1 day of the date of our invoice or otherwise according to any credit terms agreed between us.

6.3 You must make payment within the agreed terms of payment and the title of the good shall not be passed to you until payments have been made.

6.4 If you do not pay within the period set out above, we will suspend any further deliveries to you and without limiting any of our other rights or remedies for statutory interest, charge you interest at the rate of 8% per annum above the base rate of the Bank of England from time to time on the amount outstanding until you pay in full.

6.5 Time for payment will be of the essence of the Contract between us and you.

6.6 All payments must be made in British Pounds unless otherwise agreed in writing between us.

6.7 Both parties must pay all amounts due under these Terms and Conditions in full without any deduction or withholding except as required by law and neither party is entitled to assert any credit, set-off or counterclaim against the other in order to justify withholding payment of any such amount in whole or in part. If any credit is due for any reason these claims must be notified to the seller within six months from the delivery date, no claims will be accepted after the 6 months.

7. Delivery

7.1 We will arrange for the delivery of the Goods to the address specified in the quotation, or your order or to another location we agree in writing.

7.2 If you do not specify a delivery address or if we both agree, you must collect the Goods from our premises.

Subject to the specific terms of any special delivery service, delivery can take place at any time of the day and must be accepted at any time between 8 am to 5 pm.

7.3 If you do not take delivery of the Goods we may, at our discretion and without prejudice to any other rights: store or arrange for the storage of the Goods and will charge you for all associated costs and expenses including, but not limited to, transportation, storage and insurance; and / or make arrangements for the redelivery of the Goods and will charge you for the costs of such redelivery; and/ or after 10 business days, resell or otherwise dispose of part or all of the Goods and charge you for any shortfall below the price of the Goods.

7.4 If redelivery is not possible as set out above, you must collect the Goods from our premises and will be notified of this. We can charge you for all associated costs including, but not limited to, storage and insurance. 7.5 Any dates quoted for delivery are approximate only, and the time of delivery is not of the essence. We will not be liable for any delay in delivery of the Goods that is caused by a circumstance beyond our control or your failure to provide us with adequate delivery instructions or any other instructions that are relevant to the supply of the Goods.

7.6 We can deliver the Goods by instalments, which will be invoiced and paid for separately. Each instalment is a separate contract. Any delay in delivery or defect in an instalment will not entitle you to cancel any other instalment.

8. Inspection and acceptance of Goods

8.1 You must inspect the Goods on delivery or collection.

8.2 If you identify any damages or shortages, you must inform us in writing within 3 working days of delivery, providing details in writing via email. Anything submitted after 3 days will not be eligible for a credit note.

8.3 Other than by agreement, we will only accept returned Goods if we are satisfied that those Goods are defective and if required, have carried out an inspection.

8.4 Subject to your compliance with this clause and/or our agreement, you may return the Goods and we will, as appropriate, repair, or replace, or refund the Goods or part of them.

8.5 We will be under no liability or further obligation in relation to the Goods if:

8.6 If you fail to provide notice as set above; and/or you make any further use of such Goods after giving notice under the clause above relating to damages and shortages; and/or the defect arises because you did not follow our oral or written instructions about the storage, commissioning, installation, use and maintenance of the Goods; and/or the defect arises from normal wear and tear of the Goods; and/or the defect arises from misuse or alteration of the Goods, negligence, wilful damage or any other act by you, your employees or agents or any third parties.

8.7 You bear the risk and cost of returning the Goods.

8.8 Acceptance of the Goods will be deemed to be upon inspection of them by you and in any event within 3 days after delivery.

9. Risk and title

9.1 The risk in the Goods will pass to you on completion of delivery.

9.2 Title to the Goods will not pass to you until we have received payment in full (in cash or cleared funds) for: (a) the Goods and/or (b) any other goods or services that we have supplied to you in respect of which payment has become due.

9.3 Until title to the Goods has passed to you, you must (a) hold the Goods on a fiduciary basis as our bailee; and/or (b) store the goods separately and not remove, deface or obscure any identifying mark or packaging on or relating to the Goods; and/or (c) keep the Goods in satisfactory condition and keep them insured against all risks for their full price from the date of delivery.

9.4 As long as the Goods have not been resold, or irreversibly incorporated into another product, and without limiting any other right or remedy we may have, we can at any time ask you to deliver up the Goods and, if you fail to do so promptly, enter any of your premises or of any third party where the Goods are stored in order to recover them.

10. Termination

10.1 We can terminate the sale of Goods under the Contract where: you commit a material breach of your obligations under these Terms and Conditions; you are or become or, in our reasonable opinion, are about to become the subject of a bankruptcy order or take advantage of any other statutory provision for the relief of insolvent debtors; you enter into a voluntary arrangement under Part 1 of the Insolvency Act 1986, or any other scheme or arrangement is made with your creditors; or you convene any meeting of your creditors, enter into voluntary or compulsory liquidation, have a receiver, manager, administrator or administrative receiver appointed in respect of your assets or undertakings or any part thereof, any documents are filed with the court for the appointment of an administrator, notice of intention to appoint an administrator is given by you or any of your directors or by a qualifying floating charge holder (as defined in para. 14 of Schedule B1 of the Insolvency Act 1986), a resolution is passed or petition presented to any court for the winding up of your affairs or for the granting of an administration order, or any proceedings are commenced relating to your insolvency or possible insolvency.

11. Limitation of liability

11.1 Our liability under the Contract, and in breach of statutory duty, and in tort, misrepresentation or otherwise will be limited to this clause.

11.2 Subject to the clauses above on Inspection and Acceptance and Risk and Title, all warranties, conditions or other terms implied by statute or common law (save for those implied by Section 12 of the Sale of Goods Act 1979) are excluded to the fullest extent permitted by law.

11.3 If we do not deliver the Goods, our liability is limited, subject to the clause below, to the costs and expenses incurred by you in obtaining replacement goods of similar description and quality in the cheapest market available, less the price of the Goods.

11.4 We will not be liable (whether caused by our employees, agents or otherwise) in connection with the Goods, for: any indirect, special or consequential loss, damage, costs, or expenses; and/or any loss of profits; loss of anticipated profits; loss of business; loss of data; loss of reputation or goodwill; business interruption; or, other third party claims; and/or any failure to perform any of our obligations if such delay or failure is due to any cause beyond our reasonable control; and/or any losses caused directly or indirectly by any failure or breach by you in relation to your obligations; and/or any loss relating to the choice of the Goods and how they will meet your purpose or the use by you of the Goods supplied.

11.5 The exclusions of liability contained within this clause will not exclude or limit our liability for death or personal injury caused by our negligence; or for any matter for which it would be illegal for us to exclude or limit our liability; and for fraud or fraudulent misrepresentation.

12. Communications

12.1 All notices under these Terms and Conditions must be in writing and signed by, or on behalf of, the party giving notice (or a duly authorised officer of that party).

12.2 Notices will be deemed to have been duly given: when delivered, if delivered by courier or other messenger (including registered mail) during the normal business hours of the recipient; when sent, if transmitted by fax or email and a successful transmission report or return receipt is generated; on the fifth business day following mailing, if mailed by national ordinary mail; or on the tenth business day following mailing, if mailed by airmail.

12.3 All notices under these Terms and Conditions must be addressed to the most recent address, email address or fax number notified to the other party.

13. Stock Cleanse

13.1 Stock Cleansing shall only be carried out once in a calendar year and the cleansed stock shall be replaced by stock in the same product range meaning if you return copper fittings then you must re-order copper fittings, and the handling charge for the stock cleanse shall not exceed 50% of the original invoice value, and the freight charges shall be the responsibility of the returnee. (see stock cleanse sheet)

14. Circumstances beyond the control of either party

14.1 Neither party shall be liable for any failure or delay in performing their obligations where such failure or delay results from any cause that is beyond the reasonable control of that party. Such causes include, but are not limited to: power failure, internet service provider failure, industrial action, civil unrest, fire, flood, storms, earthquakes, acts of terrorism, acts of war, governmental action or any other event that is beyond the control of the party in question.

15. No Waiver

15.1 No waiver by us of any breach of these Terms and Conditions by you shall be considered as a waiver of any subsequent breach of the same or any other provision.

16. Severance

16.1 If one or more of these Terms and Conditions is found to be unlawful, invalid, or otherwise unenforceable, that / those provisions shall be deemed severed from the remainder of these Terms and Conditions (which will remain valid and enforceable).

17. Law and jurisdiction

17.1 These Terms and Conditions are governed by and interpreted according to English law. All disputes arising under these Terms and Conditions are subject to the exclusive jurisdiction of the English courts.



Unit B, Trident Business Park, Neptune Way
Huddersfield, HD2 1UA.

📞 General enquiries: 01924 491 797 Technical line: 07584 453922

✉️ info@mpressfittings.co.uk 🌐 www.mpressfittings.co.uk

Company Reg No: 08760787



Certificate 31879
SS 2022

C6000/B8000/ Range of Copper/Bronze Crimp Fittings
(approval number 1309116)

Press Inox Range of Stainless Steel Crimp Fittings
(approval number 1309117)