



# ASCLS-NJ OLYMPICS

**SPRING SEMINAR 2024**

**April 18, 2024**

**THE IMPERIA**

**1714 EASTON AVENUE  
SOMERSET, NJ**

# ASCLS–NJ 2024 Spring Seminar & Expo

## Table of Contents

Welcome Page	2
Registration Link	3
Basket Raffle	4
Schedule of Events	5
Seminar Sponsorship	6
Scientific Sessions	7 - 11
Keynote Speakers	12-16
Each One, Recruit One	17
Seminar Committees and Board Members	18
ASCLS Beliefs, Values, and Mission	19
Vendor and Sponsor Advertisements	20-25



ASCLS  
NJ

# ASCLS-NJ OLYMPICS

**SPRING SEMINAR 2024**

**April 18, 2024**

7:00am - 4:00pm

**THE IMPERIA**

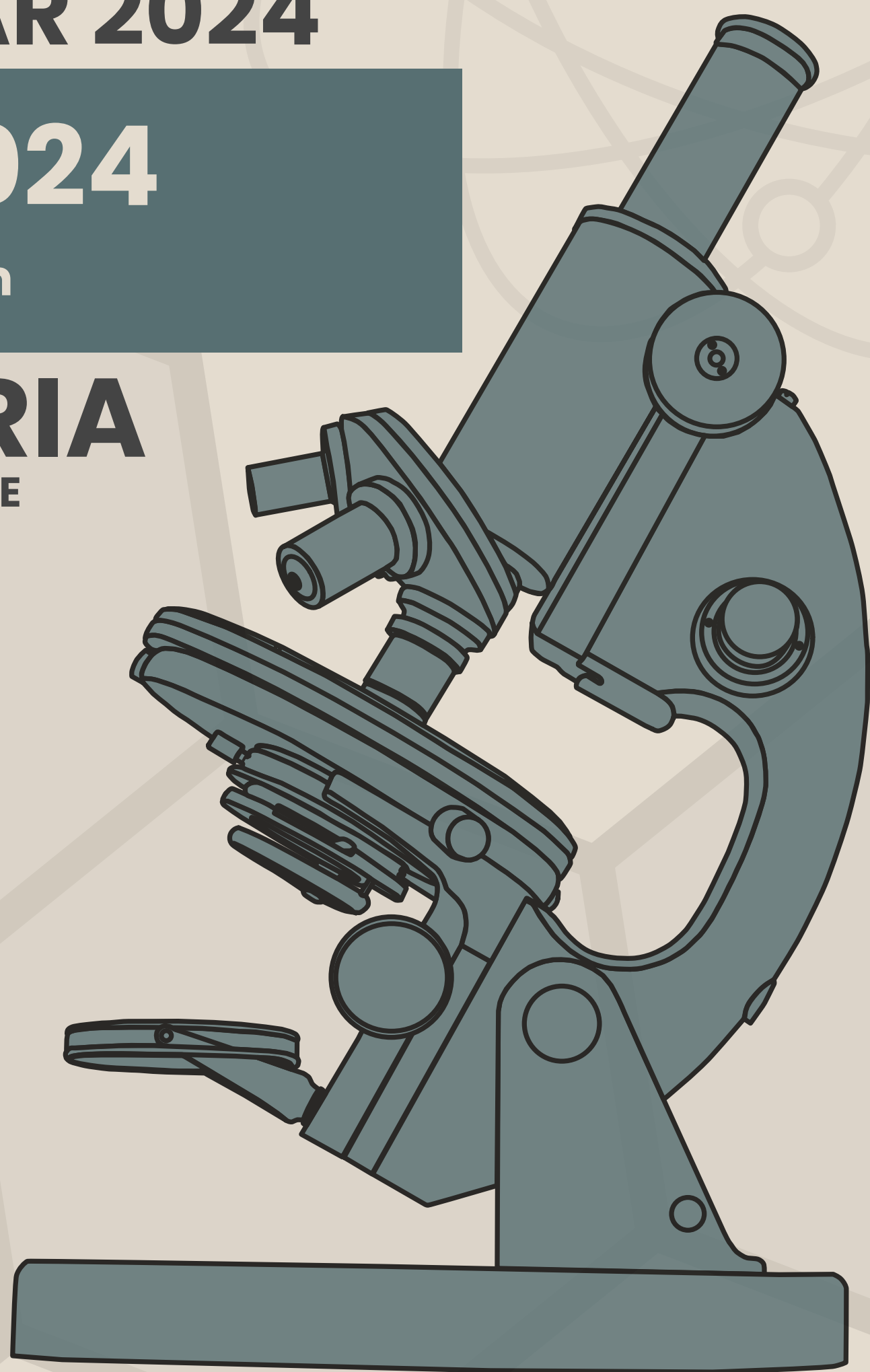
1714 EASTON AVENUE

SOMERSET, NJ

**SCAN HERE TO REGISTER**



[HTTPS://FORM.JOTFORM.COM/ASCLSNJ/2024  
SPRINGSEMINAR](https://form.jotform.com/ASCLSNJ/2024SPRINGSEMINAR)



**EARLY BIRD:**

**MEMBER \$100**

**NON-MEMBER \$140**

**STUDENT MEMBER \$30**

**STUDENT NON-MEMBER \$60**

**ON SITE**

**MEMBER \$125**

**NON-MEMBER \$165**

**STUDENT MEMBER \$50**

**STUDENT NON-MEMBER \$90**





## ASCLS NJ BASKET RAFFLE FUNDRAISER

1 ticket = \$1  
6 tickets = \$5  
12 tickets = \$10  
18 tickets = \$15  
24 tickets = \$20  
30 tickets = \$25

Winners will be announced at the conclusion of the Spring Seminar! Good luck!



All Donations will be donated to the NJ Sharing Network  
Baskets were donated from NJ MLS Programs and ASCLS NJ Members





# ASCLS-NJ 2024 SPRING SEMINAR & EXPO

## SCHEDULE

<b>Morning Schedule</b>	
7:00AM - 8:15AM	Registration, Visit Industry Exhibits, Continental Breakfast
8:15AM - 9:10AM	Opening Keynote
9:15AM - 10:10AM	Morning Scientific Sessions
10:15AM - 11:10AM	Morning Scientific Sessions
<b>Afternoon Schedule</b>	
11:10AM - 11:30AM	Visit Industry Exhibits
11:35AM - 12:15PM	Spring House of Delegates Meeting / Industry and Member Awards
12:15PM - 1:15PM	Luncheon and Networking
1:15PM - 1:50PM	Visit Industry Exhibits
1:50PM - 2:45PM	Afternoon Scientific Sessions
2:50PM - 3:45PM	Closing Session
3:45PM	Basket Raffle Drawing - Cristal Ballroom Pre- Event Area

ASCLS-NJ 2024 SPRING SEMINAR & EXPO

# Seminar Sponsorship

Platinum Vendor

**meridian** BIOSCIENCE®

Gold Vendors



Silver Vendors

**QuidelOrtho**

Bronze Vendors



8 **HEALTHCARE CONNECTIONS, INC.** for speaker sponsorship



# SESSION TOPICS

<p><b>Opening Keynote</b></p>	<p align="center"><b>“AI Trends in Healthcare”</b> Michelle Bosch, VP Global Commercial Marketing &amp; Business Management <b>Sponsored by Meridian Bioscience</b></p>		
<p><b>Blood Bank</b></p>	<p><b>“Cell and Gene Therapy – The Role of the Clinical Laboratory”</b> Ronit Slotky, PhD, MSc, CABP Hackensack UMC</p>	<p><b>“Maternal Hemorrhage and the Transfusion Service”</b> Colleen Hinrichsen, MLS(ASCP)CM, SBB, DLM Quest Diagnostic - Hackensack Meridian Health Partnership</p>	<p><b>“Select Transfusion Transmitted Tick Born Pathogens”</b> Kip Kuttner, DO Medical Director Miller-Keystone Blood Center</p>
<p><b>Chemistry</b></p>	<p><b>“Vitamin D testing. Historical Perspectives and Current Approaches”</b> Robert Boorstein, MD, PhD Diasorin</p>	<p><b>"Hb A1c Is Not Just A Number or What You Should Know When Choosing Hb A1c Method"</b> Aigars Brants, PhD Director of Scientific Affairs Sponsored by Sebia</p>	<p><b>“Spring Allergies and Pets: A Focus on Specific IgE Diagnostic Testing with Whole Allergens and Allergen Components”</b> Gary Falcetano, PA-C, AE-C Thermo Fisher Scientific</p>
<p><b>Hematology</b></p>	<p><b>“Digital Cell Morphology &amp; Associated Case Studies”</b> Emily Thompson, MLS (ASCP), MSE Director of Global Training &amp; Product Support, CellaVision</p>	<p><b>“Differential Diagnosis: The Evaluation of Anemia”</b> Stephanie B. Cochrane, Ed.D, MLS(ASCP)CM Rutgers University School of Health Professions</p>	<p><b>“Gene Therapy for Sickle Cell Disease”</b> Richard O. Francis MD, PhD Columbia University Irving Medical Center - New York Presbyterian Hospital</p>
<p><b>Microbiology</b></p>	<p><b>Does Speed Matter? The Financial and Clinical impact of Rapid Antimicrobial Susceptibility Testing”</b> Thomas Kirn MD PhD NJDOH</p>	<p><b>“The Use of Bacteriophage (Phage) Therapy in the Fight Against Multi-drug Resistant Organisms”</b> Deborah Josko PhD., MLT(ASCP)M,SM Rutgers University School of Health Professions</p>	<p><b>“Assessing the Clinical utility, and Economic Outcomes of the Novel Liaison MeMed-BV Assay in Rapidly Distinguishing the Etiology of Acute Bacterial and Co-infections from Viral Infection.”</b> Alka Shukla, PhD DiaSorin</p>
<p><b>Closing Keynote</b></p>	<p align="center"><b>“The History of the Future of Healthcare”</b> Kevin Shaughnessy, Head of Commercialization North America, Roche Information Solutions <b>Sponsored by Roche Diagnostics</b></p>		



# ASCLS-NJ 2024 SPRING SEMINAR & EXPO

## BLOOD BANK SESSIONS

---

### **“Maternal Hemorrhage and the Transfusion Service”**

**Session 2: 10:15–11:10 am**

**Colleen Hinrichsen, MLS(ASCP), SBBCM, DLMCM  
Quest Diagnostics – Hackensack Meridian Health Partnership**

**The presentation will review maternal hemorrhage definition, background and report card. The role of the bank bank in maternal hemorrhage will be discussed as well as the state and national initiatives.**

### **“Select Transfusion Transmitted Tick Born Pathogens”**

**Session 3: 1:50–2:45 pm**

**Kip Kuttner, D.O.  
Miller–Keystone Blood Center**

**This presentation will briefly review transfusion transmitted infectious diseases before settling on a more specific discussion of blood born tick transmitted pathogens with Babesia being the primary example. The incidence of transfusion babesiosis before and after blood testing was introduced will be discussed. We will close with a discussion of select tick born pathogens that might be seen as the geographic distribution of ticks increases and final thoughts.**

**Kip Kuttner, D.O.**

**After completing anatomical and clinical pathology training at Harbor–UCLA Medical Center and a Transfusion Medicine fellowship at Long Beach Memorial Hospital and in Dr George Garretty’s lab at the La Red Cross, I accepted the position of Medical Director at Miller–Keystone Blood Center where I have been for 30 years. My interests surround providing a safe and adequate blood supply. I am past Chair of the New Jersey Association for Blood Bank Professionals, past Chair of the Circular of information Task Force.**

# ASCLS-NJ 2024 SPRING SEMINAR & EXPO

## BLOOD BANK SESSIONS

---

### **“Cell and Gene Therapy – The Role of the Clinical Laboratory”**

**Session 1: 9:15–10:10 am**

**Ronit Slotky, PhD, MSc, CABP**

**Hackensack University Medical Center**

**Cell therapy manufacturing laboratories play an essential role in the manufacturing of products for bone marrow transplantation and other cell therapies. In the last 20 years the exponential growth in development of new advanced cell and gene therapies for treatment of cancer and genetic diseases emphasized the role of these facilities as partners in the drug manufacturing. The presentation will provide an overview of the required steps for manufacturing of cell therapy products, from the donor collection to the final distribution for treatment. We will describe the common procedures and testing that cell therapy laboratory perform, and review its critical roles in the manufacturing of advanced cell and gene therapy treatments.**

#### **Ronit Slotky, PhD, MSc, CABP**

**Dr. Slotky is an associate professor of oncology at Hackensack Median Health School of Medicine and the Director of the Cell Therapies Manufacturing Facility at the Hackensack University Medical Center. She earned her PhD at the Technion, Israel Institute of Technology and an MSc in Biostatistics from the Columbia University Mailman School of Public Health and completed her post doctorate at Columbia University Medical Center studying proteins' structure and function. Dr.**

**Slotky has been working in the cellular therapy field for over 15 years and has published numerous scientific articles in the field of cell processing. She is a board member and the chair of the Cellular Therapy Section Coordinating Committee for the Advanced Association of blood and Biotherapies (AABB) and a member of the International Society of Cell & Gene Therapy (ISCT) Laboratory Practices committee as well as well as the Foundation for the Accreditation of Cellular therapy (FACT) Standards HCT Processing Subcommittee. Her current work and research efforts focuses on improving cell processing methods and patients' outcomes and providing education opportunities for clinicians and researchers.**

# ASCLS-NJ 2024 SPRING SEMINAR & EXPO

## CHEMISTRY SESSIONS

### **“Hb A1c Is Not Just A Number or What You Should Know When Choosing Hb A1c Method”**

**Session 1: 9:15–10:10 am**

**Aigars Brants, PhD, Director of Scientific Affairs  
Sebia, Inc.**

Hb A1c concentration is widely used to diagnose and monitor diabetes. American Diabetes Association (ADA) recently updated Hb A1c Guidelines for diagnosing and monitoring diabetes and listed some limitations for Hb A1c that many laboratorians and physicians often are not aware of or ignore. Some of these limitations and their implications will be reviewed using examples from peer reviewed studies. The role of precision and accuracy of Hb A1c values will be discussed.

#### **Aigars Brants, PhD**

Aigars Brants received his PhD from Cornell University. He has held Scientific Affairs positions at Roche Diagnostics, The Binding Site, Inc. and at Sebia, Inc. Aigars has presented on protein and hemoglobin electrophoresis at various AACC local chapter workshops, professional (ex., CAMLT) and international meetings.

### **“Vitamin D Testing: Historical Perspectives and Current Approaches”**

**Session 3: 1:50–2:45pm**

**Robert Boorstein, MD, PhD  
Diasorin**

#### **Robert Boorstein, MD, PhD**

**Board Certification AP/CP  
MD/PhD trained (PhD in Pharmacology)**

**Medical Director for large clinical laboratories in both hospital and commercial space.**

**Extensive experience with competing methodologies for testing (LC/MS vs IA).**



# ASCLS-NJ 2024 SPRING SEMINAR & EXPO

## CHEMISTRY SESSIONS

### **“Spring Allergies and Pets: A Focus on Specific IgE Diagnostic Testing with Whole Allergens and Allergen Components”**

Session 2: 10:15–11:10 am

Gary Falcetano, PA-C, AE-C

Scientific Affairs Manager – Allergy  
Immunodiagnosics – Thermo Fisher Scientific

Using lecture and case-based learning, the presentation will cover the diagnostic challenges of upper and lower respiratory symptoms that are associated with spring allergy season and pet allergy.

#### **Gary Falcetano, PA-C, AE-C**

Gary Falcetano is a seasoned clinician, medical publisher, and medical communications professional. Gary is the Scientific Affairs Manager – Allergy. For the past 11 years, he’s focused on allergy and immunology and provides high level educational programs in asthma, allergy, and autoimmune disorders for both primary care and specialty clinicians, directs the U.S. research efforts, and is a Certified Asthma Educator. He has authored articles in Medical Laboratory Observer and CAP Today as well book chapters on Allergy, Asthma and Molecular Allergy Diagnosis.

## HEMATOLOGY SESSIONS

### **“Digital Cell Morphology & Associated Case Studies ”**

Session 3: 1:50–2:45 pm

Emily Thompson, MLS (ASCP), MSE

Director of Global Training & Product Support, CellaVision  
Sysmex America

The presentation will illustrate how automated morphology can be used in the clinical laboratory to improve efficiency, proficiency and connectivity. Educational case studies will be reviewed to highlight the clinical benefits of the automated technology.

#### **Emily Thompson, MLS(ASCP), MSE**

Emily Thompson is currently the Director of Global Training & Product Support for CellaVision. She is a certified Medical Technologist and worked previously as Hematology Supervisor at the Hospital of the University of Pennsylvania in Philadelphia. She has been with CellaVision for 13 years now and thoroughly enjoys her role in creating and delivering training and educational materials and events. Please welcome Emily who will review interesting case studies highlighting the clinical benefits of the automated digital morphology technology.

# ASCLS-NJ 2024 SPRING SEMINAR & EXPO

## HEMATOLOGY SESSIONS

---

### **“Gene Therapy for Sickle Cell Disease”**

**Session 1: 9:15–10:10 am**

**Richard O. Francis MD, PhD**

**Columbia University Irving Medical Center – New York Presbyterian Hospital**

**The presentation will give a brief overview of sickle cell disease and then will discuss gene therapy used to treat sickle cell disease.**

**Richard O. Francis MD, PhD**

**Dr. Richard Francis is an Associate Professor in the Department of Pathology and Cell Biology at the Columbia University Vagelos College of Physicians & Surgeons in New York, New York. He is the Director of Hematology and Coagulation testing at Columbia University Irving Medical Center–New York Presbyterian Hospital, where he is also the Assistant Program Director for residency training in clinical pathology. In addition, he is an Adjunct Associate Professor at Rutgers University in Newark, New Jersey. Dr. Francis is board certified in clinical pathology, blood banking and transfusion medicine, and has published on a variety of topics including hematology, hemostasis, and blood collection and transfusion. His research has mainly focused on the contribution of oxidative stress to the pathophysiological changes in red blood cells that occur during refrigerated storage.**

### **“Differential Diagnosis: The Evaluation of Anemia”**

**Session 2: 10:15–11:10 am**

**Stephanie B. Cochrane, Ed.D, MLS(ASCP)CM  
Rutgers University School of Health Professions**

**The interactive presentation will discuss the morphological classification of anemias in differentiating the various types of anemias and the importance of establishing a differential diagnosis through use of diagnostic tests when similarities in blood cell morphology and the patient’s clinical presentation exist.**

**Stephanie B. Cochrane, Ed.D, MLS(ASCP)CM**

**Dr. Cochrane is a faculty member in the undergraduate MLS program at Rutgers University School of Health Professions and an educator in the MLS program at Monmouth Medical Center. Stephanie primarily teaches Hematology and Hemostasis where she utilizes active learning and evidence-informed teaching strategies to engage and motivate her students.**



# ASCLS-NJ 2024 SPRING SEMINAR & EXPO

## MICROBIOLOGY SESSIONS

### **“The Use of Bacteriophage (Phage) Therapy in the Fight Against Multi-Drug Resistant Organisms.”**

Session 2: 10:15–11:10 am

**Deborah Josko PhD., MLT(ASCP)M,SM**  
Rutgers University School of Health Professions

This presentation will provide an overview of bacteriophage therapy and its use as well as its limitations in the fight against multi-drug resistant bacterial infections.

**Deborah Josko PhD., MLT(ASCP)M,SM**

Dr. Josko is an Associate Professor at Rutgers University – School of Health Professions in the Department of Clinical Laboratory and Medical Imaging Sciences. She has been in the Clinical Laboratory Science profession for almost 39 years – 12 years working in the Clinical Laboratory as Generalist/Microbiologist/Serologist and 27 years in academia in the MLS, MS and DCLS Programs and the Physician Assistant Program at Rutgers University – School of Health Professions (formerly the University of Medicine and Dentistry of New Jersey). Her teaching specialties include Clinical Microbiology, Clinical Immunology, and Infectious Disease. Dr. Josko is certified as a Specialist in Microbiology, a Microbiology Technologist, and a Medical Laboratory Technician with the American Society for Clinical Pathology.

### **“Assessing the Clinical utility, and Economic Outcomes of the Novel Liaison MeMed-BV Assay in Rapidly Distinguishing the Etiology of Acute Bacterial and Co infections from Viral Infection.”**

Session 1: 9:15–10:10 am

**Alka Shukla, PhD**  
DiaSorin

The LIAISON® MeMed BV® is an innovative test based on computational integration of three host immune response proteins TRAIL, IP-10 and CRP to differentiate bacterial from viral infections and for identification of coinfection. The assay is approved for use in pediatric and adult patients with suspected acute infection with symptoms for seven days or less presenting to the emergency department or urgent care and samples collected at hospital admission. The presentation will explore the clinical utilization, and economic impact of the assay. Selected case studies will be discussed using novel technology that quickly and accurately identifies the etiology of acute infections.

**Alka Shukla, PhD**

Alka Shukla received her PhD from the University of Queensland, Australia on study of membrane integration and redox properties of drug metabolizing Cytochrome P450 enzymes. After her PhD she continued her research career as post doc in biomedical sciences. She joined Lab Diagnostics in 2010 and since 2017 she's working at Diasorin. Currently, she's Clinical and Scientific liaison for Northeast.



# ASCLS-NJ 2024 SPRING SEMINAR & EXPO

## MICROBIOLOGY SESSIONS

### **“Does Speed Matter? The Financial and Clinical impact of Rapid Antimicrobial Susceptibility Testing.”**

Session 3: 1:50–2:45 pm

Thomas Kirn MD PhD

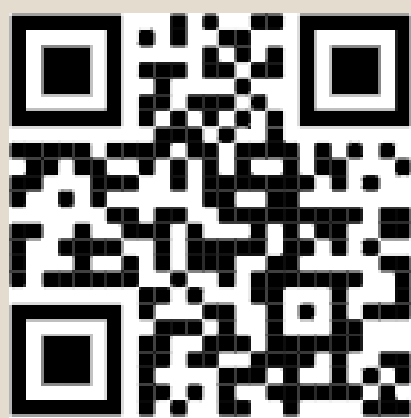
Professor of Pathology & Laboratory Medicine, Rutgers Robert Wood Johnson Medical School

Director of Infectious Disease Diagnostics, Robert Wood Johnson University Hospital  
Medical Director, New Jersey Public Health and Environmental Laboratories, NJDOH

Dr. Kirn will discuss the impact of timely antimicrobial susceptibility testing on hospitalized patients.

## Check out our website!

Find the recent Analyzer Issue, leadership team, event registration and so much more!  
[www.ascls-nj.org](http://www.ascls-nj.org)



# ASCLS-NJ 2024 SPRING SEMINAR & EXPO

## OPENING KEYNOTE

---

### **“AI Trends in Healthcare”**

**Michelle Bosch**

**VP Global Commercial Marketing & Business Management  
Meridian Bioscience**

**AI is top of mind in 2024: it’s in the news, around the water cooler, and on your Twitter feed.**

**This presentation will take a closer look at AI as it relates to the healthcare and diagnostic industries. Specifically, how are market participants on ‘both sides of the aisle’ – laboratories and diagnostic vendors – looking towards AI for optimizations targeting their day-to-day productivity and to strengthen a wide range of business practices.**

**Michelle Bosch**

**VP Global Commercial Marketing & Business Management  
Meridian Bioscience**

**Michelle began her career in laboratory in 1994, and over the next 10 years held several positions as a Medical Technologist at LabCorp, and Clinical Laboratory Specialist in Cincinnati Childrens’ Chemistry and Hematology Departments. She entered the Medical Device industry with Meridian’s Inside Sales team in 2004 and transitioned first to Marketing as a Foodborne/Respiratory Product Manager in 2007. Michelle became the Sr. Director of GlobalMarketing in 2019 and was named Vice President in 2023. Holding numerous positions during this period has given her tremendous insight into the impact that technology has on the Diagnostics industry, and also helped her become a leading contributor in Meridian operations towards a variety of disease states. Specifically, C.difficile and H.pylori.**

**As VP of Global Commercial Marketing and Business Management, all Marketing/Communication technologies and their application fall directly under her leadership responsibilities. Meridian Bioscience, and the rest of the Diagnostic industry, are collectively assessing why AI is important, how can it improve our day-to-day operations, and what it’s impact will be in coming years.**

# ASCLS-NJ 2024 SPRING SEMINAR & EXPO

## CLOSING KEYNOTE

---

### **“The History of the Future of Healthcare”**

**Kevin Shaughnessy**

**Head of Commercialization North America, Roche Information Solutions**

**A summation of conversations with Healthcare Executive Leadership paired with economic indicators and cutting edge research, this lecture will highlight the many factors involved in formulating a comprehensive digital strategy.**

**Kevin Shaughnessy**

**Head of Commercialization North America, Roche Information Solutions**

**Kevin Shaughnessy is an experienced, entrepreneurial, and hands-on Chief Commercial Officer with a proven track record of building and managing successful sales and marketing teams in Healthcare Information Technology organizations that exceed revenue growth expectations.**

The Roche logo is a blue-outlined hexagon with the word "Roche" written in a bold, blue, sans-serif font in the center.

**Roche**





## ASCLS NJ Each One, Recruit One

By recruiting a laboratory professional, you and your recruit have a chance to win a \$25 gift card at ASCLS-NJ 2024 Spring Seminar!

To enter the drawing, email both names to [ASCLS.NJ@gmail.com](mailto:ASCLS.NJ@gmail.com)

Are you a member of ASCLS NJ?

The 2023-2024 Each One, Recruit One Campaign calls on ASCLS NJ members to recruit at least 1 member to join and help us increase our membership in 2024 by 10%!

Due to the pandemic, our membership has been declining. We need your help to continue supporting our events to keep our organization growing and becoming stronger.

**Our Goal for 2023-2024 is to increase membership by 10% by April 2024!**

If you would like to become more involved, please email us at [ASCLS.NJ@gmail.com](mailto:ASCLS.NJ@gmail.com)



# ASCLS-NJ 2024 SPRING SEMINAR & EXPO

## LEADERSHIP TEAM

PAST PRESIDENT: JOHN FREDERICK

PRESIDENT: LINDA SHERMAN ATKINS

PRESIDENT-ELECT: MARY KAY O'CONNOR

TREASURER: MARY KAY O'CONNOR

SECRETARY: MARIETTA TOMLIN

DIRECTOR AT LARGE: LUCIA WANG

DIRECTOR AT LARGE: PATTY JACKMAN

ASCENDING PROFESSIONAL: PAIGE SNYDER

DEVELOPING PROFESSIONALS: THOMAS WHITE & TYJHE GRAYSON



FINANCE CHAIR: MARY KAY O'CONNOR

MEMBERSHIP RECRUITMENT & RETENTION CHAIR: LUCIA WANG

PUBLICATIONS CHAIR/NEWLETTER EDITOR: MICHELE SLOMA

P.A.C.E. CHAIR: LINDA SHERMAN-ATKINS

INDUSTRY EXHIBITS CHAIR: REBECCA NEMEH/KAHUL PATEL

SCHOLARSHIP CHAIR: PATTY JACKMAN

AWARDS CHAIR: MARIETTA TOMLIN

SOCIAL NETWORKING CHAIR: PATTY JACKMAN

BY-LAWS: JOHN FREDERICK AND REBECCA NEMEH

GOVERNMENT LIAISON CHAIR: ADITI SARKAR

STUDENT FORUM ADVISER CHAIR: CAROLINA VILCHEZ

EDUCATION SCIENTIFIC ASSEMBLY CHAIR: STEPHANIE COCHRANE

EDUCATION SCIENTIFIC ASSEMBLY CHAIRS:

BIOCHEMISTRY - SALLY CORTEZ

BLOOD BANK - RUTH PEREZ

HEMATOLOGY - CAROLINA VILCHEZ

MICROBIOLOGY - ISMAIL IMAM

REGISTRATION CHAIR: MARYANN MURILLO & MARIETTA TOMLIN

WEBMASTER: MARY KAY & GREG O'CONNOR

# ASCLS-NJ 2024 SPRING SEMINAR & EXPO

## ASCLS BELIEFS, VALUES & MISSION

### ASCLS Believes:

1. Quality laboratory service is essential to quality health care.
2. Competent, credentialed, laboratory professionals are the foundation to quality laboratory medicine.
3. Everyone deserves access to safe, effective, efficient, equitable, and patient-centered healthcare, and
4. Advancing the laboratory profession advances health care.

### Core Values:

1. Ensuring safe, accurate, efficient, appropriate, and cost-effective laboratory service is a component of quality.
2. Defining the characteristics of competent personnel within the profession and providing professional development opportunities so that practitioners can maintain competency is an essential role of a professional association.
3. Enabling laboratory professionals to function at their highest level of competence will contribute to cost-effective health care.
4. Promoting diversity supports the delivery of quality laboratory service.
5. Taking a leadership role in standard and policy setting is a core professional responsibility.
6. Advocating for quality within the laboratory is essential to the assurance of quality health care delivery.

### ASCLS Mission:

The mission of ASCLS is to make a positive impact on health care through leadership that will assure excellence in the practice of laboratory medicine.

GET CONNECTED: FOLLOW ASCLS-NJ



@asclsnjsociety



American Society for  
Clinical Laboratory  
Science - NJ Society



[www.ascls-nj.org](http://www.ascls-nj.org)



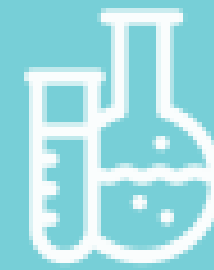
## HemoScreen

The HemoScreen 5-part differential CBC analyzer harnesses PixCell Medical's proprietary Viscoelastic Focusing technology to perform lab-grade analysis on a single blood drop sample, as it passes through a unique lab-on-a-cartridge.

Exceptionally simple to operate, it requires no maintenance or calibration, and is fully portable.



5 Minutes  
Test-to-Results



Clinically-backed  
Accuracy, Specificity  
& Abnormal Flagging

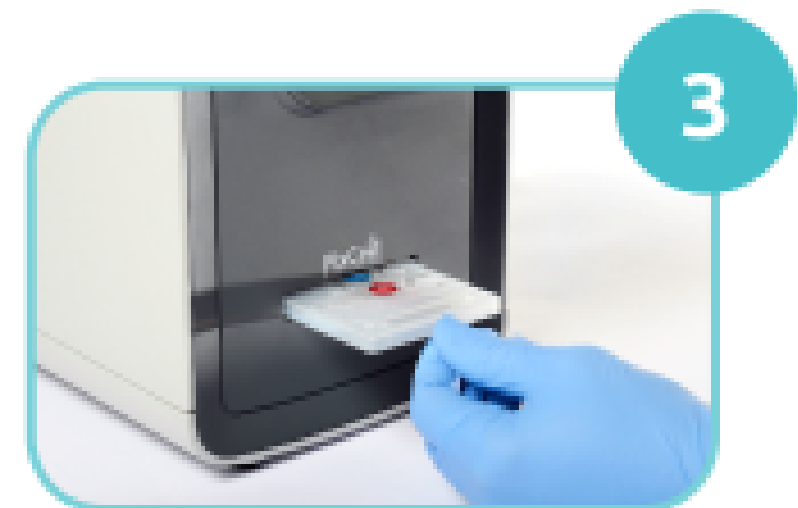
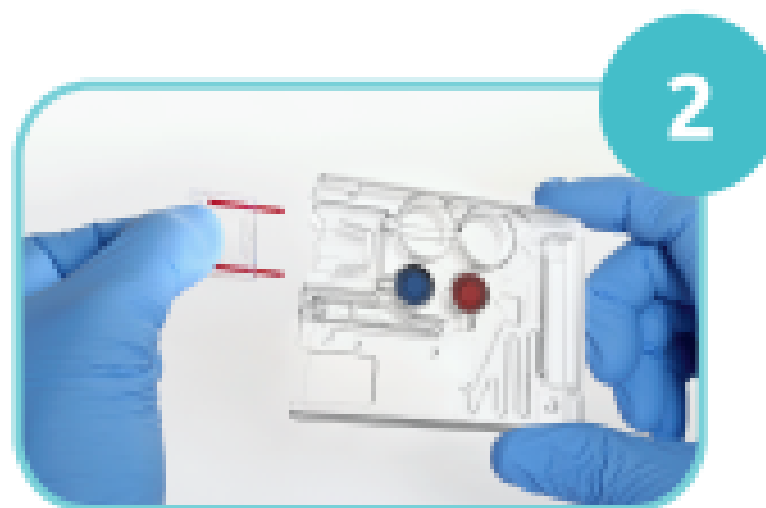
**NO**

Maintenance,  
Calibration or  
Reagents Required



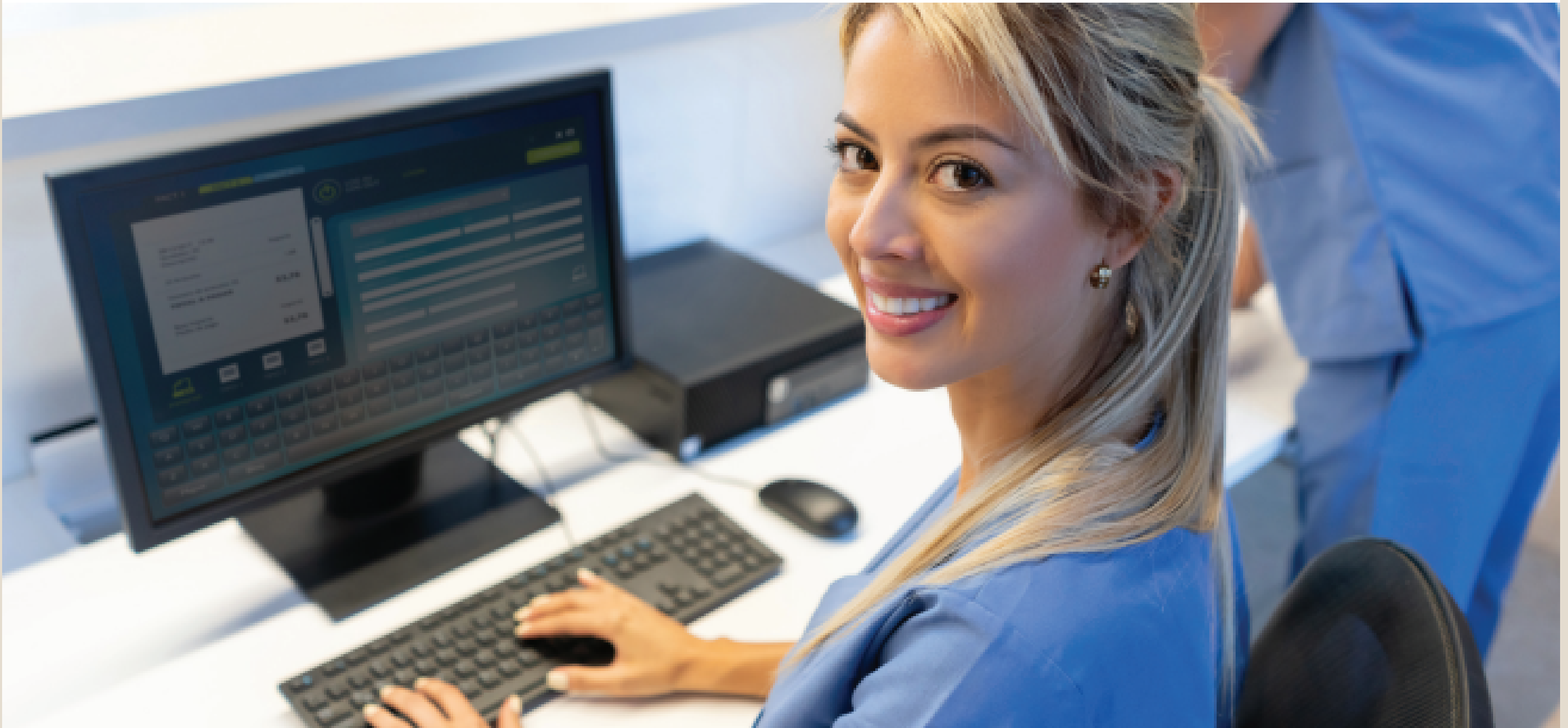
20 Parameters  
5-part Differential

### Unparalleled Ease-of-Use



Discover a new era in CBC testing with HemoScreen's straightforward and efficient sampling process. The advanced proprietary lab-on-cartridge includes all required reagents, guaranteeing accuracy and ease of use, and minimizing operational overhead.

Embrace a streamlined approach to hematology diagnostics, making complex procedures a thing of the past.



## We Are Hiring

### Come join our Lab team!

- Clinical Lab Scientists
- Medical Technologists
- POCT Coordinators/Trainers
- Lab Supervisors

If you have any questions about this opportunity or other open positions, email **Su Cho** at [scho2@summithealth.com](mailto:scho2@summithealth.com)

#### What we offer:

- Benefits (medical, dental, and vision) – effective the first day of the month following start date\*
- 401k with matching program
- Opportunities for advancement
- Professional growth – tuition reimbursement\*, annual compensation and bonus program, and internal growth opportunities
- Work/life balance – paid time off including PTO, holidays, and more so employees can take a break or care for themselves and their family

*\*Eligible to full-time employees*

To learn more about other positions at Summit Health, please visit [summithealth.com/careers](https://summithealth.com/careers)



## Working together for better health

---

At Quest Diagnostics, we believe in the value of foresight, the power of prediction, and, above all, the impact of information. That's why Quest provides the cutting-edge diagnostics, life-changing data, and integrated services necessary to optimize health.

[QuestDiagnostics.com](https://www.questdiagnostics.com)

Quest Diagnostics is proud to sponsor the  
**American Society for Clinical Laboratory Science -  
New Jersey Spring Seminar & Expo** in 2024.



# ASCLS-NJ 2024 SPRING SEMINAR & EXPO



## What happens when you don't have the supplies you need or your equipment doesn't work?

Keep your operations running smoothly with our **Rapid Response Team** and **Supply Chain Expertise**. Count on us to ensure you always have access to critical supplies and functional equipment when you need it most.

Cenmed specializes in:

- Removing **supply chain headaches and challenges**, let us source what you need, fast.
- Helping to ensure **critical research is not delayed** through our Rapid Response Team and Global distribution system.
- Eliminate delays with our **laboratory equipment coverage** solutions.



121 Jersey Avenue  
New Brunswick, NJ 08901  
(732) 447-1124  
[www.cenmed.com](http://www.cenmed.com)

Don't let supply chain and equipment challenges hold you back. Contact us today to see how Cenmed can help prevent a disruption in your operations.

cenmed   
enterprises

# ASCLS-NJ 2024 SPRING SEMINAR & EXPO



We are your source  
for advancing health.



Visit [labcorp.com](https://labcorp.com) to learn more.



©2024 Labcorp. All Rights Reserved. 873455-0324

# Efficiency Redefined



Streamlined *H. pylori*  
Testing Solutions

**BreathID's efficient automation can help eliminate workflow burdens for *H. pylori* testing**

- Market-leading diagnostic accuracy
- Non-invasive
- Results in 3 simple steps

Want to learn more?



[meridianbioscience.com](https://meridianbioscience.com)



**meridian** BIOSCIENCE®  
LIFE DISCOVERED. LIFE DIAGNOSED.