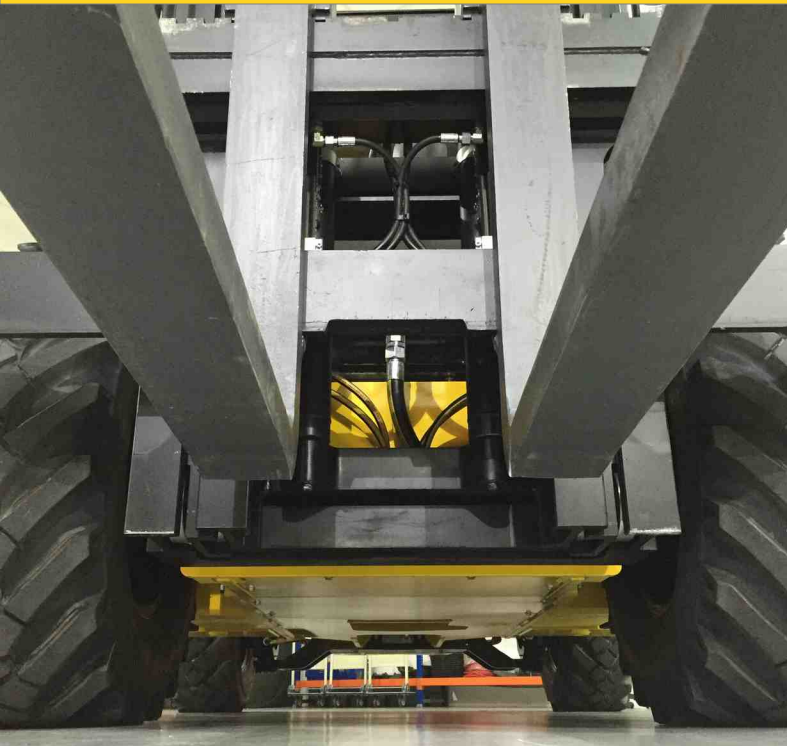


# BOMAQ B70 MP TYPE



## TECHNICAL DATA SHEET



### KEY FEATURES:

- BEST 4WD MANEUVERABILITY
- WORLDWIDE SUPPORT
- FIRST CLASS COMPONENTS
- HYDROSTATIC TRANSMISSION
- WIDE APPLICATION AREA
- AMAZING SERIAL EQUIPMENT
- EASY MAINTENANCE
- ROBUST AND RELIABLE
- COMPACT SIZE

## BOMAQ B70 MP 4WD TECHNICAL SPECIFICATIONS

THE MULTIPURPOSE CONCEPT IS AIMED FOR A VARIETY OF APPLICATIONS. IT HAS THE BEST TURNING RADIUS OF ANY 4WD, POWERFUL LINDE HYDROSTATIC TRANSMISSION, AN UNBEATABLE STANDARD EQUIPMENT... THE BEST CHOICE WHEN YOU NEED EVERYTHING IN ONE MACHINE.



### MAIN FEATURES

Manufacturer	BOMAQ INDUSTRIES		
Model	B70 MP 4WD		
Powered	type	Diesel	
Driver position	position	Seated	
Front / rear tyre type	(Pneumatic/Solid)	Pneumatic / Pneumatic	
Number of wheels / powered wheels	n / n	4 / 4	
Capacity	Q	7000 (Kg)	15432 (Lb)
Load center	C.O.G.	600 (mm)	24 (in)

### DIMENSIONS

Total length with std. forks (1500 mm / 59 in)	L	5800 (mm)	228 (in)
Length to forks carriage	L2	4300 (mm)	169 (in)
Distance between axles	y	2650 (mm)	104 (in)
Distance from carriage to front axle	x	1000 (mm)	39 (in)
Rear overhung distance	z	650 (mm)	26 (in)
Minimum ground clearance	m	300 (mm)	12 (in)
Maximum height (Std. cabin)	h6	2225 (mm)	88 (in)
Overall width	B	2250 (mm)	89 (in)
Front axle track width	b1	2000 (mm)	79 (in)
Rear axle track width	b2	2000 (mm)	79 (in)
Turning radius	Wa	3880 (mm)	153 (in)
Aisle width (europallet 1200 x 800 mm)	Ast	- (mm)	- (in)

### WEIGHTS (with std. mast & forks)

Total weight without load	10678 (Kg)	23541 (Lb)
Maximum load on front axle	16260 (Kg)	35848 (Lb)
Maximum load on rear axle	5644 (Kg)	12443 (Lb)
Total weight with load	17678 (Kg)	38973 (Lb)

### TYRES

Front tyres sizes & patterns	MPT Standard	16/70-20
Rear tyres sizes & patterns	MPT Standard	11.5/80-15.3
Service brake (on front axle)	type	Multidisc oil wet & master cyl.
Parking brake (on front axle)	type	Multidisc oil wet negative hyd.

### PERFORMANCES (with std. mast & forks)

Maximum traveling speed with load	20 (Kph)	12 (Mph)
Maximum traveling speed without load	24 (Kph)	15 (Mph)
Maximum slope with / without load	%	30 / 40
Transmission type & brand	Linde Hydrostatic	
Service pump pressure	250 (bar)	3626 (PSI)
Transmission pressure	420 (bar)	6092 (PSI)

## BOMAQ B70 MP 4WD TECHNICAL SPECIFICATIONS

THE MULTIPURPOSE CONCEPT IS AIMED FOR A VARIETY OF APPLICATIONS. IT HAS THE BEST TURNING RADIUS OF ANY 4WD, POWERFUL LINDE HYDROSTATIC TRANSMISSION, AN UNBEATABLE STANDARD EQUIPMENT... THE BEST CHOICE WHEN YOU NEED EVERYTHING IN ONE MACHINE.



### ENGINE (standard)

Manufacturer	Perkins		
Model	1104D44T		
Maximum power	ISO 1585	99,8 (BHP)	74,4 (KW)
Maximum torque		445 (Nm)	328 (lbf ft)
Maximum rate	2200 (rpm)		
Emmissions certification	EU / EPA	STAGE IIIA / TIER 3	

### ENGINE (optional)

Manufacturer	Perkins		
Model	904J-E36T		
Maximum power	ISO 1585	99,8 (BHP)	74,4 (KW)
Maximum torque		430 (Nm)	317 (lbf ft)
Maximum rate	2400 (rpm)		
Emmissions certification	EU / EPA	STAGE V / TIER 4F	

### MAST

Standard mast	Duplex	3300 (mm)	130 (in)
Integrated side shift	yes		
4th valve to the carriage	yes		
Carriage type	DIN 15173	FEM IV B	
Standard forks (width x thickness x length)	(mm) / (in)	150x65x1500	5,9x2,6x59
Tilting angles front / back	° / °	10	12
Maximum load lifting speed		0,4 (m/s)	1,3 (ft/s)
Maximum load lowering speed		0,4 (m/s)	1,3 (ft/s)

### NOISE EMISSIONS

Outside the machine, engine idle	dB	- Lmin	- Leq
At operator's head, closed cabin, engine idle	dB	- Lmin	- Leq
At operator's head, closed cabin, engine at full throttle	dB	- Lmin	- Leq

### MISCELLANEOUS

Fuel tank capacity	90 (L)	19,8 (gal)
Hydraulic tank capacity	120 (L)	26,4 (gal)
Coolant capacity	17 (L)	3,7 (gal)
Engine oil capacity	10 (L)	2,2 (gal)
Electrical system voltage	12 (V)	

BOMAQ B70 MP 4WD TECHNICAL SPECIFICATIONS © 2.020

ALL THE INFORMATION PRESENTED HERE CORRESPONDS TO THE STANDARD MODEL, IF YOU NEED FURTHER INFORMATION PLEASE CONTACT YOUR CLOSEST DEALER. DUE TO OUR CONTINUOUS IMPROVEMENT POLICY, BOMAQ INDUSTRIES RESERVES THE RIGHT TO MODIFY THIS INFORMATION WITHOUT PREVIOUS COMMUNICATION.

[www.bomaq.com](http://www.bomaq.com)