

13 - 15
OCTOBRE | 2021

XXIII^È CONGRÈS FRANCOPHONE DE CARDIOLOGIE INTERVENTIONNELLE

CFCIPARIS

CHANGEMENT DE LIEU
HÔTEL MÉRIDIEN ÉTOILE



Bénéfices de la revascularisation guidée par FFR dans l'angor stable

Julien ADJEDJ

Saint Laurent du Var, France

Déclaration de conflits d'intérêts

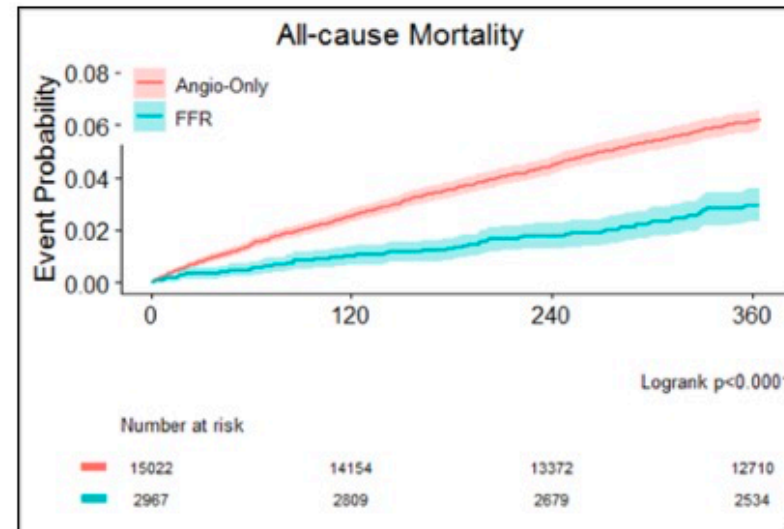
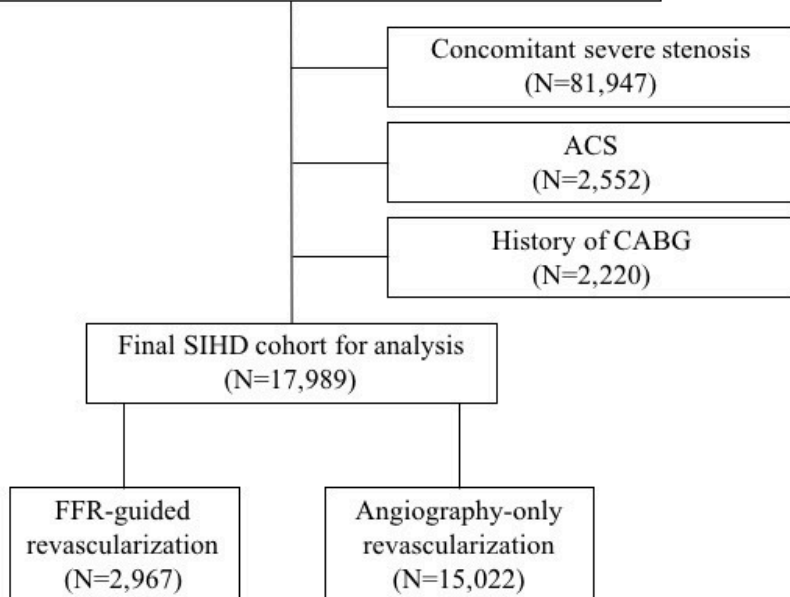


Impact clinique de la FFR

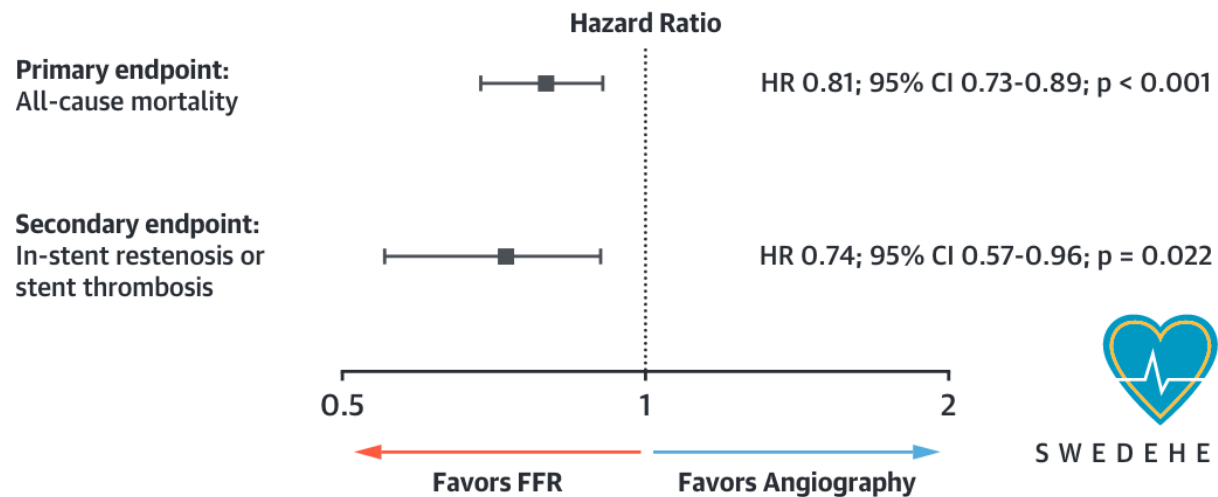
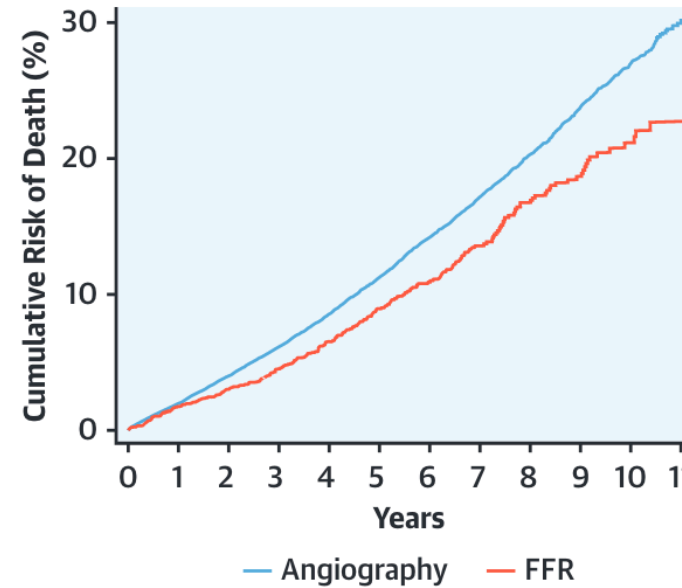
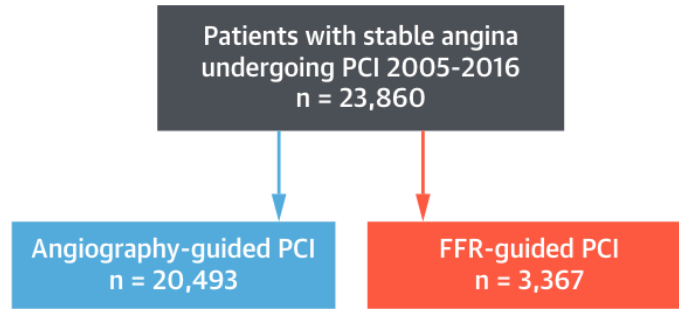
Editorial en 6 points:

1. PCI 18% groupe FFR vs 4% groupe angiographie seule
2. Adoption modeste de la FFR de 15% en 2009 à 19% en 2017
3. Pas de test non invasif dans 60% des cas
4. Plus de PCI (90%) versus chirurgie (10%) avec FFR
5. 50% PCI et 50% chirurgie avec angiographie seule
6. Réduction de la mortalité de 43%

Total number of patients undergoing coronary angiography at 66 FFR/PCI capable VA cardiac catheterization laboratories from January 1, 2009 to September 30, 2017 with at least 1 angiographically-intermediate stenosis (N=104,708)



Impact clinique de la FFR



Clinical impact of FFR guided PCI compared to angio guided PCI from France PCI registry

Julien Adjedj (Institut Arnauld Tzanck); Jean-Francois Morelle (Institut cardiovasculaire de Caen), Christophe Saint Etienne (CHU Tours); Olivier Fichaux (CHRO); Pierre Marcollet (Bourges); Marie Pascale Decomis (Oreliance); Pascal Motreff (CHU Clermont); Stephan Chassaing (Nouvelles clinique Tourengaine); Rene Koning (Clinique Saint Hilaire); Gregoire Range (CH Chartres)



Registre France PCI

14 centres participants



52610 PCI included in FPCI
Between 2014 and 2019

Exclusion:
25553 ACS
9578 coronary stenosis >90%
2770 no follow up performed
208 lost of follow up
18 CABG PCI
7 PCI with mechanical assistance

14384 PCI in patients with chronic
coronary syndrome
and one year of clinical follow up

13125 Angio guided PCI (91%)

1259 FFR guided PCI (9%)



Caractéristiques cliniques

	Angio guided PCI n=13125	FFR guide PCI n= 1259	P value
Age (year)	69.6 ± 11	67.6 ± 10	<0.0001
Sex (male)	9935 (76%)	1015 (81%)	<0.0001
BMI	27.6 ± 4.8	27.7 ± 4.7	0.486
Hypertension	8159 (62%)	763 (61%)	0.056
Diabetes	3929 (30%)	402 (32%)	0.005
Dyslipidemia	6846 (52%)	676 (54%)	0.215
Active smoker	2181 (17%)	193 (15%)	0.015
Family history of CAD	2953 (23%)	319 (25%)	<0.0001
PAD	1479 (11%)	148 (12%)	0.333
Previous stroke	697 (5%)	47 (4%)	0.003
Previous MI	2247 (17%)	213 (17%)	0.704
Previous PCI	5342 (41%)	561 (45%)	<0.0001
Previous CABG	260 (2%)	24 (2%)	0.714
Severe Kidney insufficiency (creatinine level >200)	283 (2%)	21 (2%)	0.250
LVEF (%)	55.7 ± 9	56.4 ± 9	<0.0001



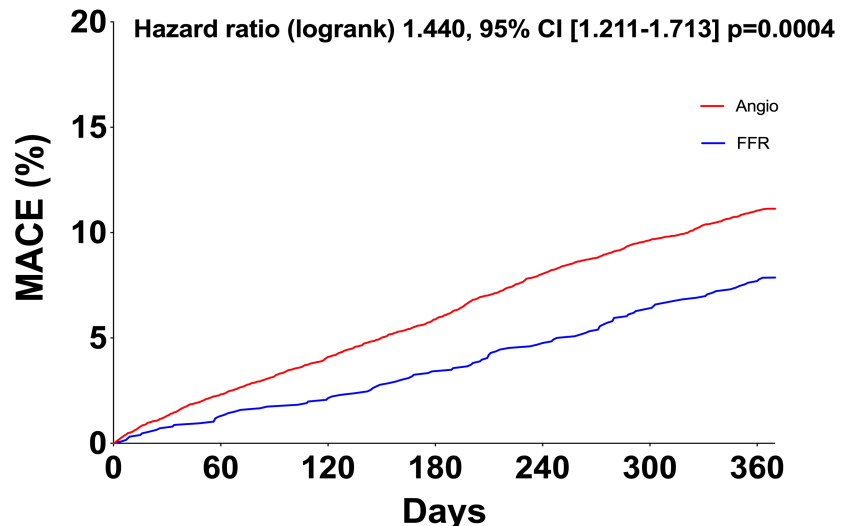
Caractéristiques de la procédure

	Angio guided PCI n=13125	FFR guide PCI n= 1259	P value
Vascular access			
Radial	12022 (92%)	1200 (95%)	<0.0001
Femoral	1069 (9%)	55 (4%)	<0.0001
Humeral	34 (0.3%)	4 (0.3%)	0.699
Sheath size (French)			
5F	1593 (12%)	153 (12%)	0.987
6F	10968 (84%)	1058 (84%)	0.668
7F	306 (2%)	25 (2%)	0.435
8F	12 (0.1%)	0	0.283
Left main stenosis	642 (5%)	42 (4%)	0.012
Global syntax score	7 ± 6	8 ± 6	0.201
Number of vessel treated	1.16 ± 0.43	1.14 ± 0.42	0.104
Number of coronary segment treated	1.44 ± 0.73	1.43 ± 0.70	0.671
Number of stents implanted	1.48 ± 0.81	1.47 ± 0.85	0.208
Contrast medium administered (mL)	132 ± 60	154 ± 64	0.002
Fluoroscopy time (min)	10 ± 8	11 ± 7	0.103
X rays delivered (cGY.cm)	3228 ± 3229	3895 ± 3420	0.082

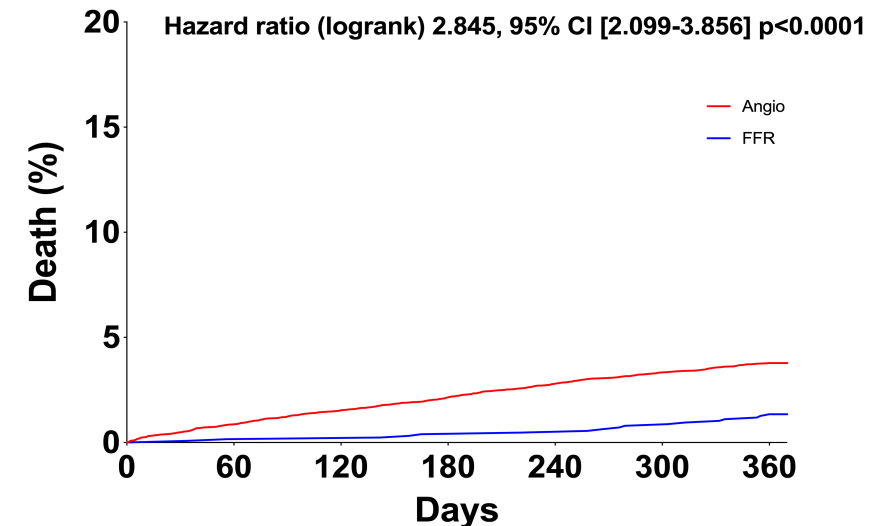


Evènements cliniques à un an

	Angio guided PCI	FFR guided PCI	P value
MACE	1478 (11.3%)	100 (7.9%)	<0.0001
Overall deaths	506 (3.9%)	17 (1.4%)	<0.0001
Cardiovascular death	177 (1.3%)	6 (0.5%)	0.008
Non cardiovascular death	231 (1.8%)	8 (0.6%)	0.003
Unknown cause of death	98 (0.7%)	3 (0.2%)	0.039
MI	145 (1.1%)	12 (1.0%)	0.302
Any Revascularization	692 (5.3%)	60 (4.8%)	0.101
Target lesion revascularization	222 (1.7%)	14 (1.1%)	0.002
Stent Thrombosis	49 (0.4%)	3 (0.2%)	0.121
Stroke	82 (0.6%)	4 (0.3%)	0.006
Major bleeding	309 (2.4%)	24 (1.9%)	0.036



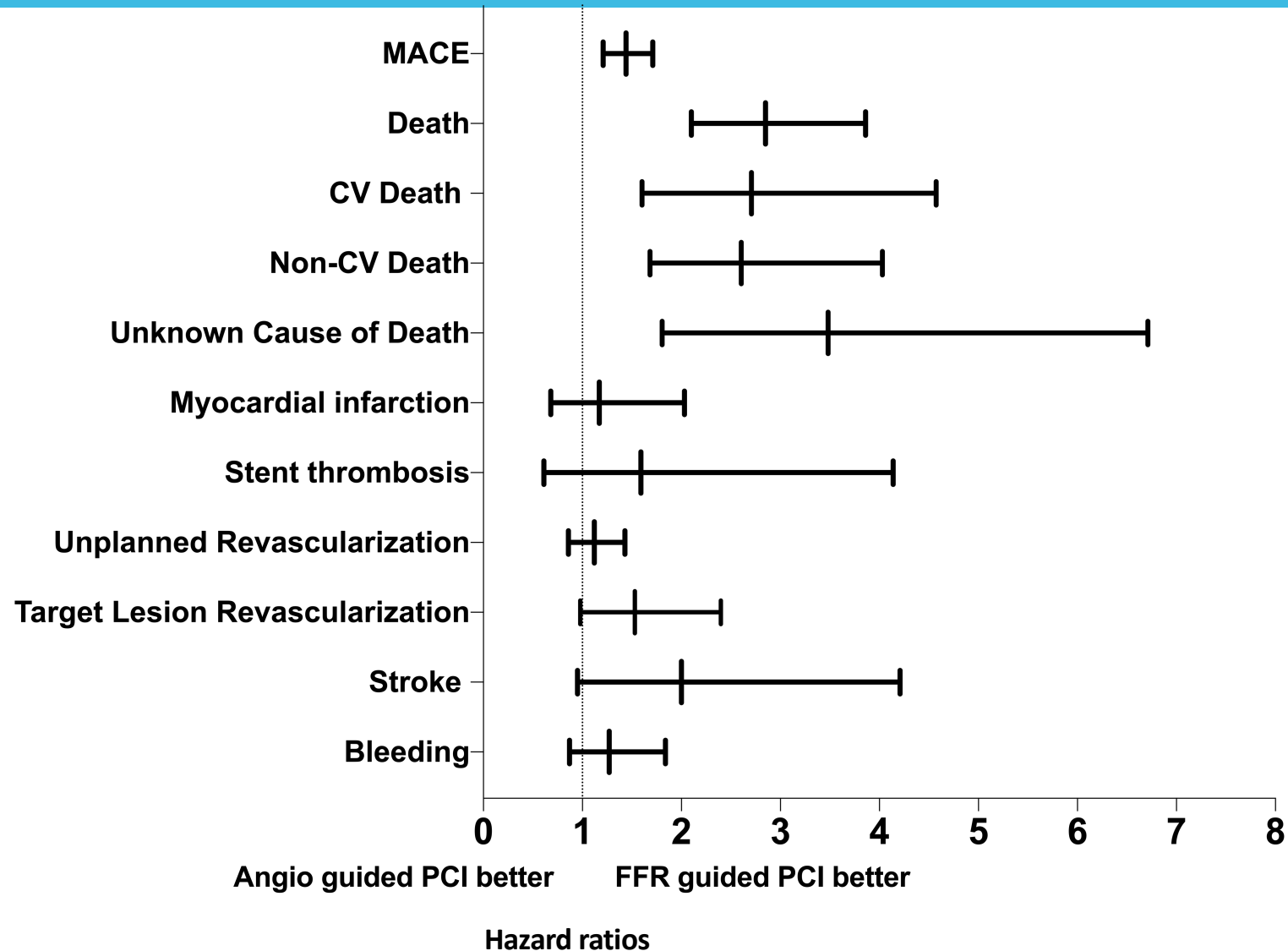
Numbers	Angio 13112	12814	12581	12343	12061	11850	11667
At risk	FFR 1259	1244	1233	1217	1200	1181	1163



Numbers	13115	13003	12917	12860	12740	12682	12620
At risk	1259	1258	1258	1255	1254	1250	1243



Evènements cliniques à un an



Résultats après ajustement

- Age
- Sex
- Smoking Status
- Diabetes
- Family history of CAD
- Left ventricle ejection fraction
- Vascular access
- Previous stroke
- Previous PCI
- Left Main stenosis
- Contrast medium volume

MACE

**FFR adjusted Hazard ratio: 1.289, 95% CI [1.030-1.614]
(p value = 0.027)**

Mortalité

**FFR adjusted hazard ratio: 2.524, 95% CI [1.421-4.312]
(p value = 0.001)**



Impact clinique de la FFR



14384 PCI in patients with chronic coronary syndrome and one year of clinical follow-up

13125 Angio-guided PCI (91%)

1259 FFR-guided PCI (9%)

