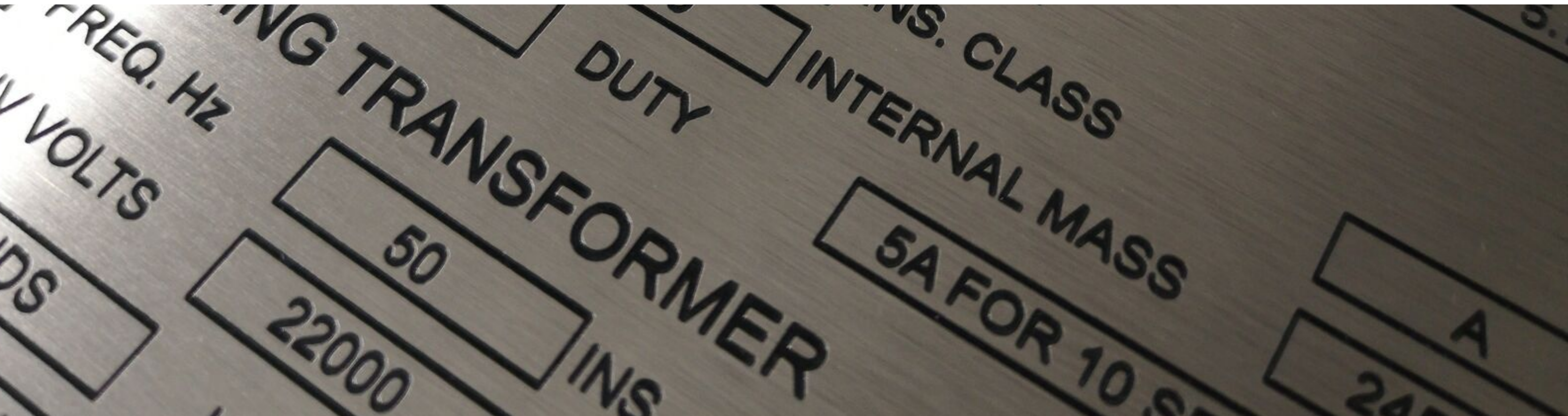


CHEMICAL ETCHING EQUIPMENT



CONTENTS

[Introduction](#)

[Industries Served](#)

[Chemical Etching Equipment](#)

- Masteretch 360 Model
- Masteretch 635 Model
- Masteretch 650 Series
- Masteretch 750 Series

[Custom Etching Equipment](#)

[Contact Information](#)

Email: Sales@Mastering.com

Tel: +44 1536 266 288

Web: www.Masteretching.com



WORLD LEADERS IN ETCHING TECHNOLOGY

Masteretch design and manufacture chemical etching equipment. From small-scale laboratory machines to large mass production etching lines, Masteretch serve a wide range of industries.

Beyond our core range of equipment we can also deliver tailored etching solutions designed to meet your unique requirements. Our expertise in fabrication and design allows us to offer a high degree of customization to help our customers achieve their objectives.

Masteretch systems are expertly designed, assembled in-house at our UK facility and fully tested prior to shipping. Our equipment is designed to operate at maximum efficiency and for long term use at high volume production levels. Masteretch systems are renowned for their dependability, low operating and maintenance costs, making Masteretch the equipment supplier of choice for many of the world's leading etching companies.





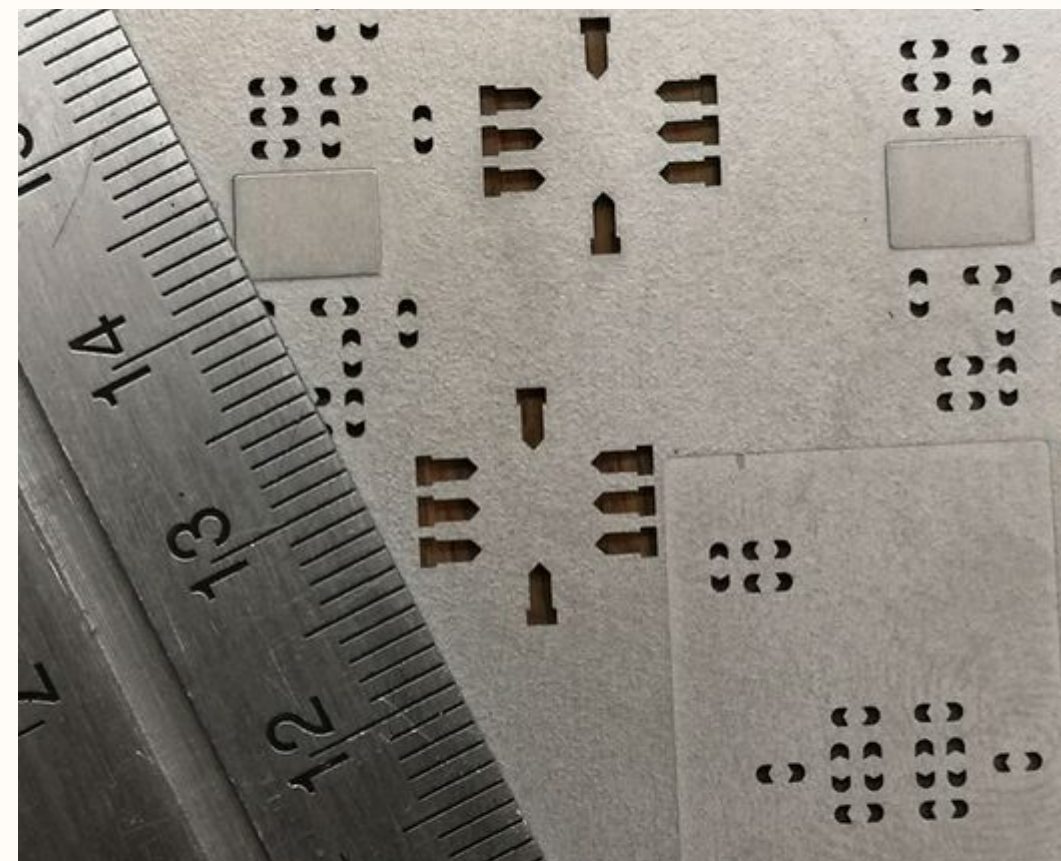
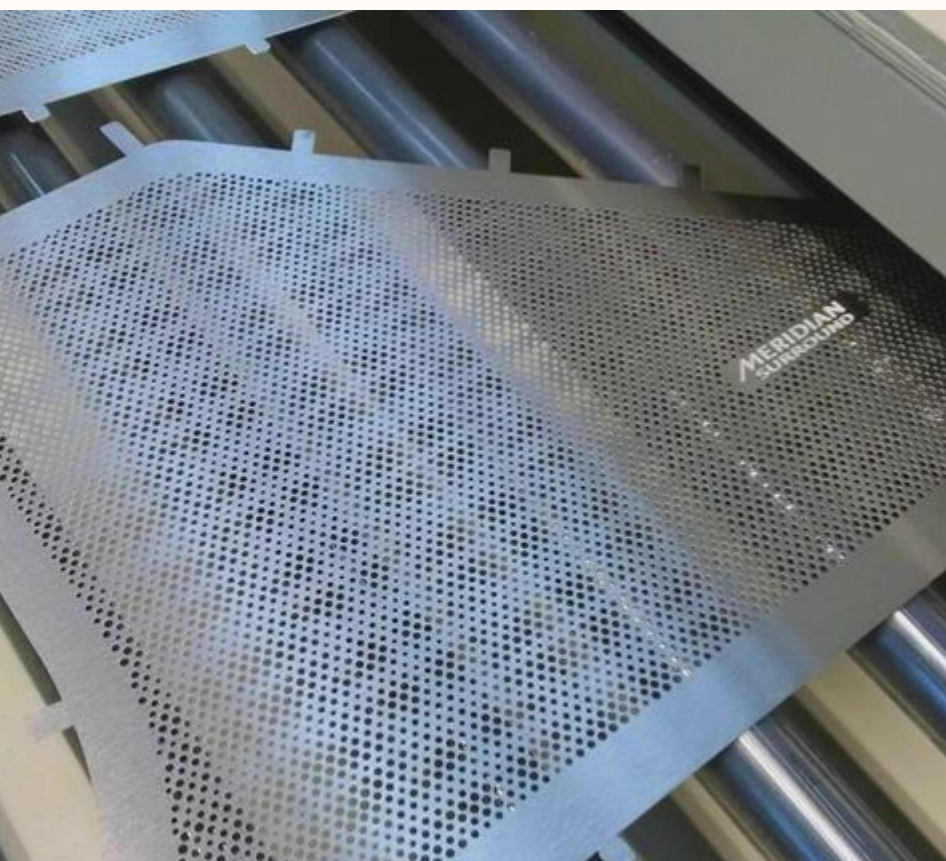
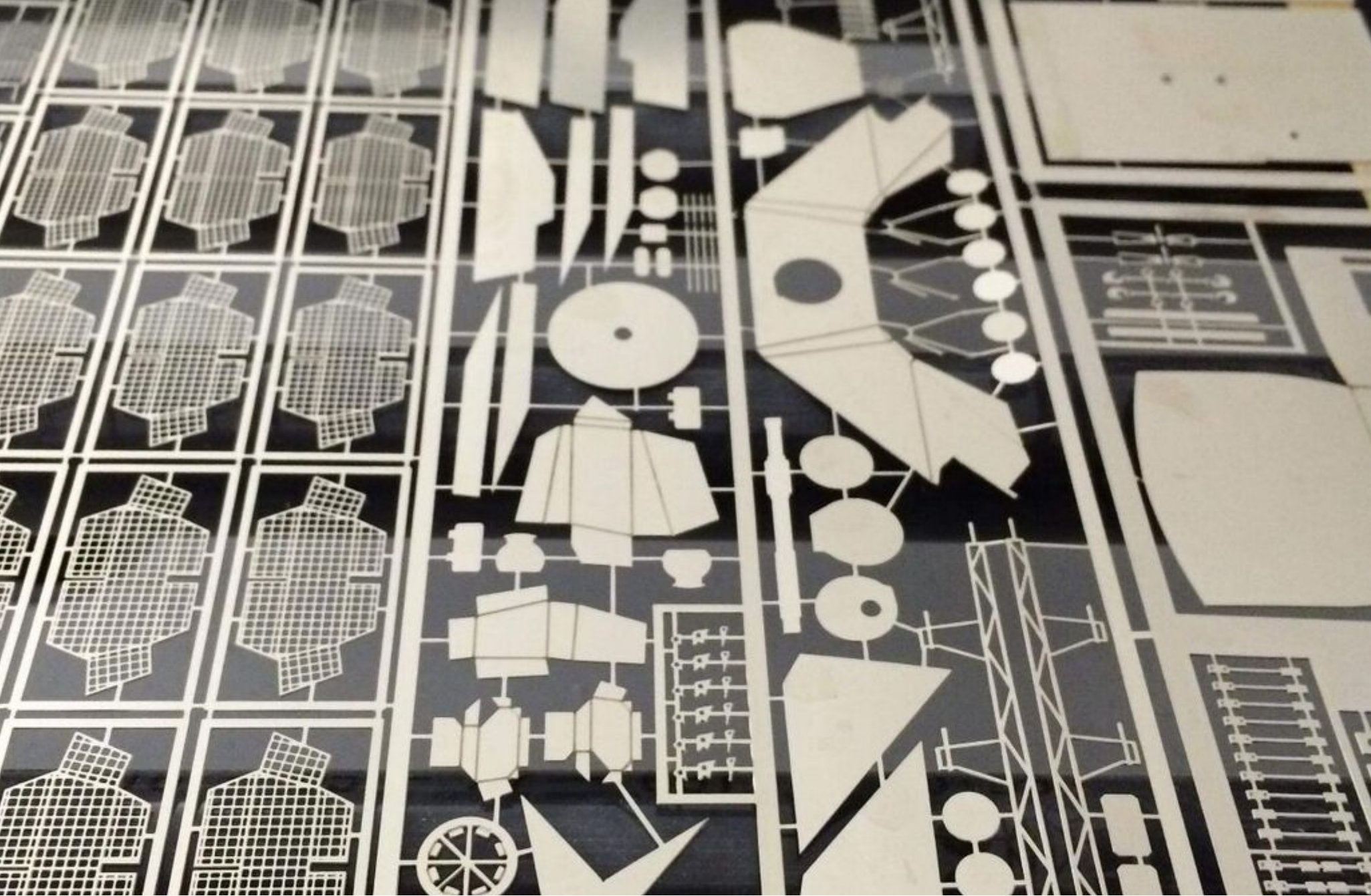
INDUSTRIES SERVED

PHOTOCHEMICAL MILLING

Chemical milling is a high precision process used to produce complex parts and components out of sheet metal. In the chemical milling process the artwork is applied on both sides of the material and is etched from both sides to cut all the way through the material.

It is a versatile manufacturing technique that retains hardness, temper, magnetic permeability, and other qualities without causing excessive stress on the material.

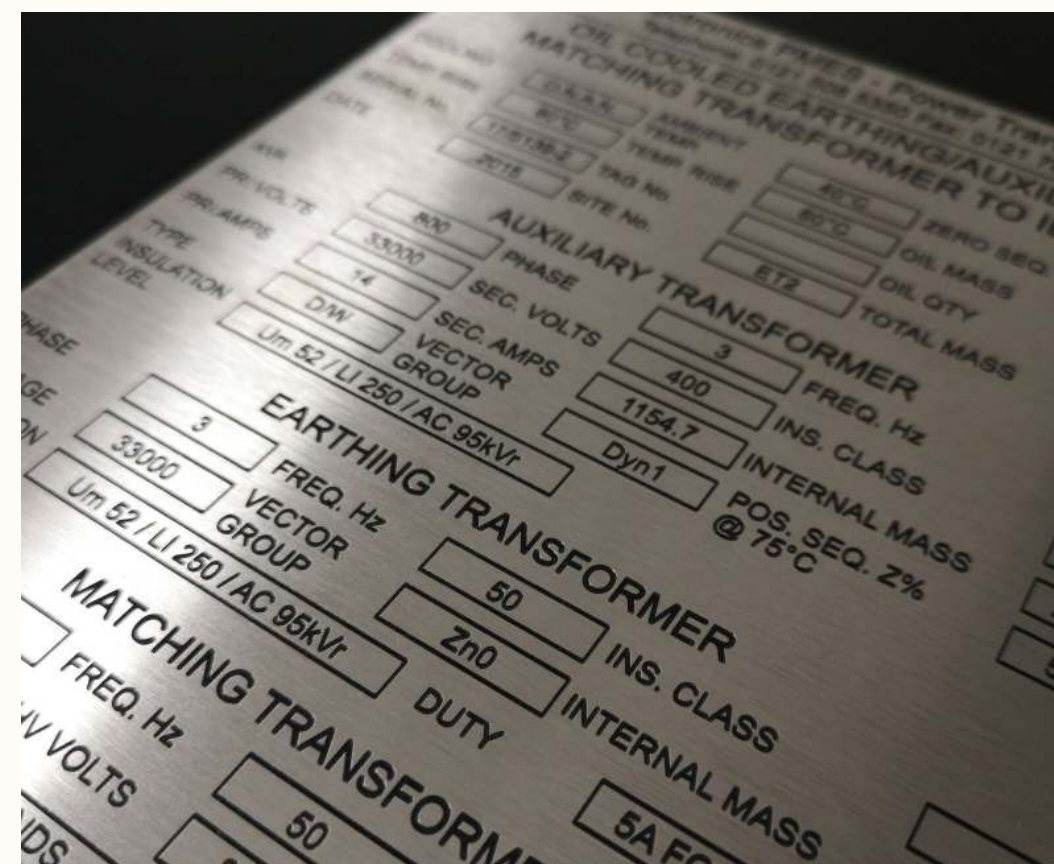
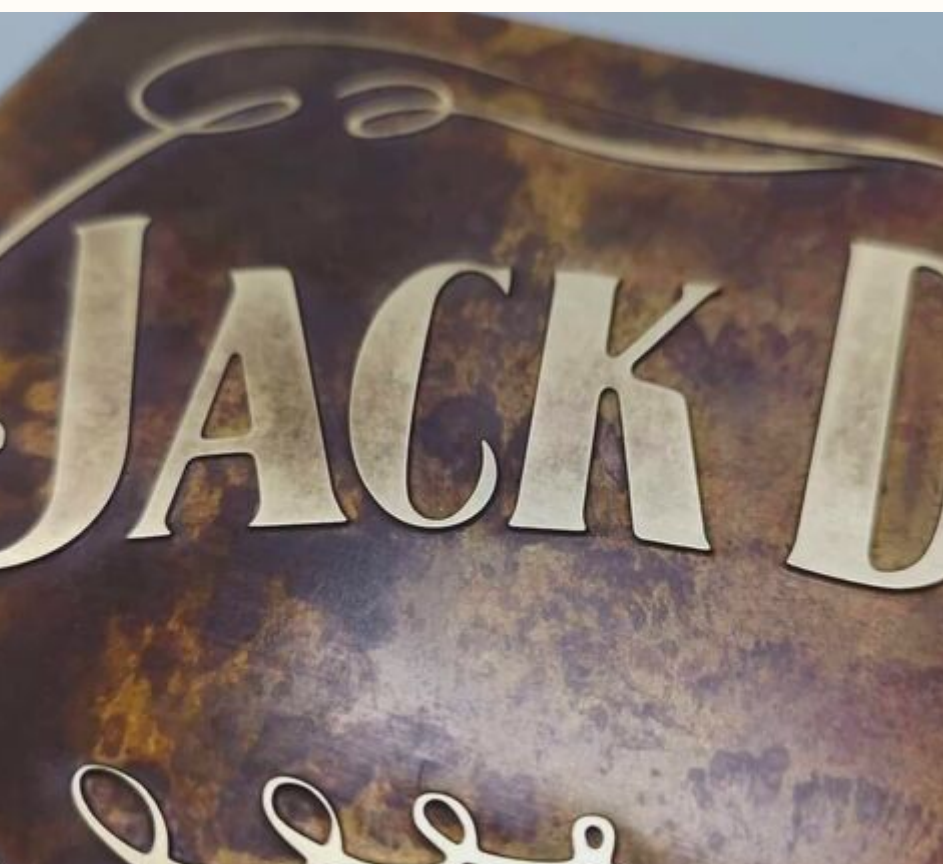
Tooling costs are very low and design changes can easily be incorporated. As an alternative to "conventional" methods, such as laser, water jet, stamping of wire EDM, chemical milling provides an accurate and economical solution for many precision metal applications



SIGNS, LABELS & NAMEPLATES

Masteretch etching equipment is used by many of the world's leading sign and nameplate manufacturers. Chemical etching is an ideal solution for producing both quality indoor and outdoor signage and its durability makes it an excellent choice for industrial labels and nameplates. Typical applications include:

- ◆ Hotel & office signage
- ◆ Wayfinding signage
- ◆ Industrial nameplates & labels
- ◆ Identification products
- ◆ Architectural panels
- ◆ Plaques & memorials
- ◆ Interpretation boards
- ◆ Corporate awards
- ◆ Safety & compliance signs
- ◆ Promotional items





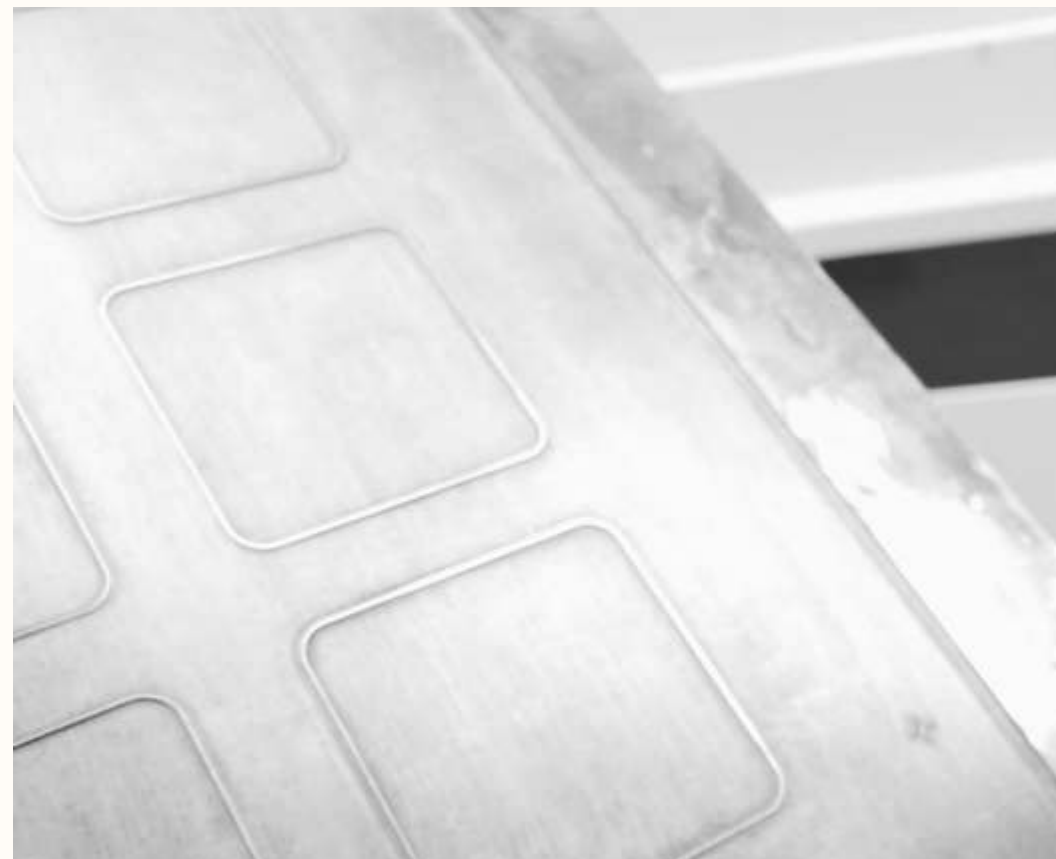
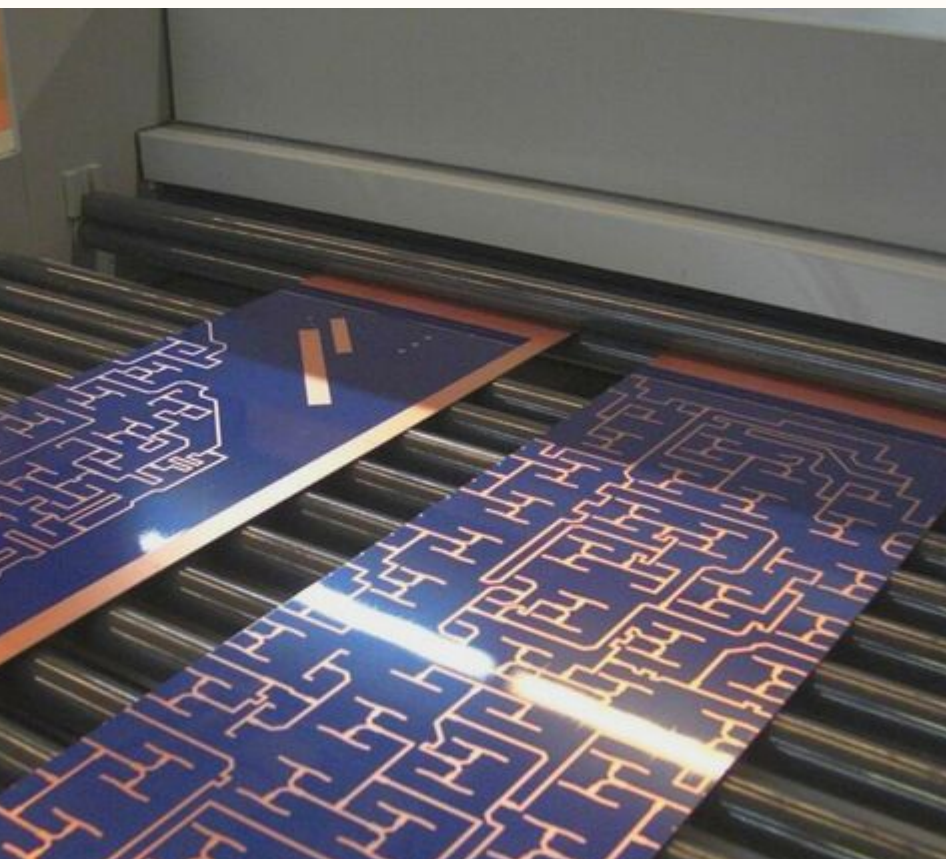
PRINTING AND ELECTRONICS

Chemical etching is used in the printing industry to produce high quality durable products such as:

- ◆ Flexible cutting dies
- ◆ Hot foil stamping dies
- ◆ Embossing cylinders
- ◆ Intaglio printmaking

In the electronics industry our etching equipment is used to produce a wide variety of products including:

- ◆ Printed Circuit Boards
- ◆ Step Stencils
- ◆ EMI/RFI shielding
- ◆ Metal foil strain gauges





CHEMICAL ETCHING EQUIPMENT

ETCHING EQUIPMENT

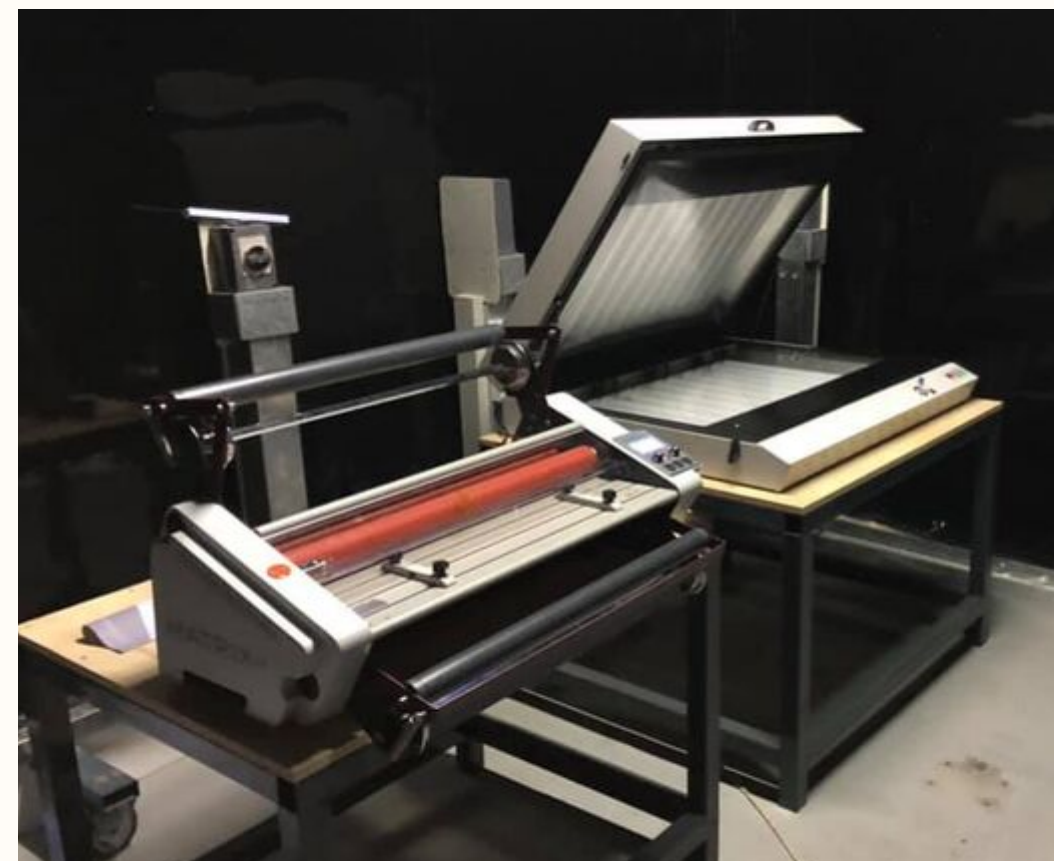
Masteretch have been building chemical etching machines for over 35 years. We supply companies in the signage industry, photochemical milling industry, as well as the electronics and printing industries. We cater to everything from compact bench top models for research and development to fully automated chemical etching lines for production on mass scale.

All our standard equipment is modular and available in Developing, Etching, Stripping and Drying configurations.

Standard Models include:

- ◆ Masteretch Model 360
- ◆ Masteretch Model 635
- ◆ Masteretch 650 Series
- ◆ Masteretch 750 Series

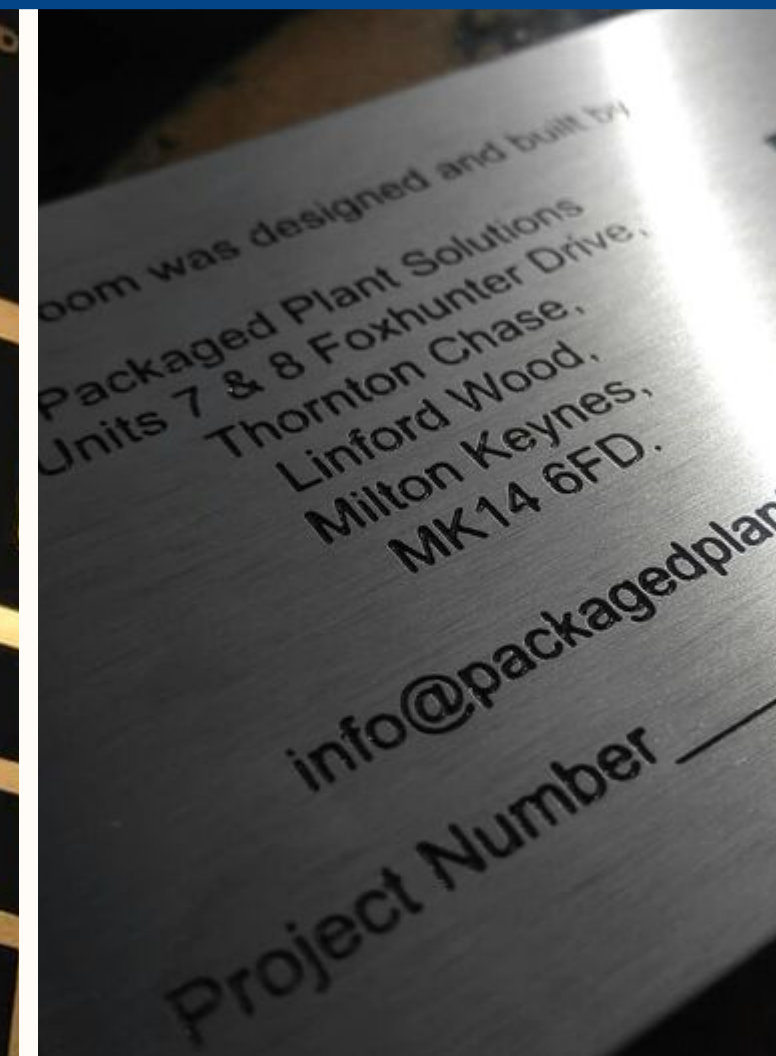
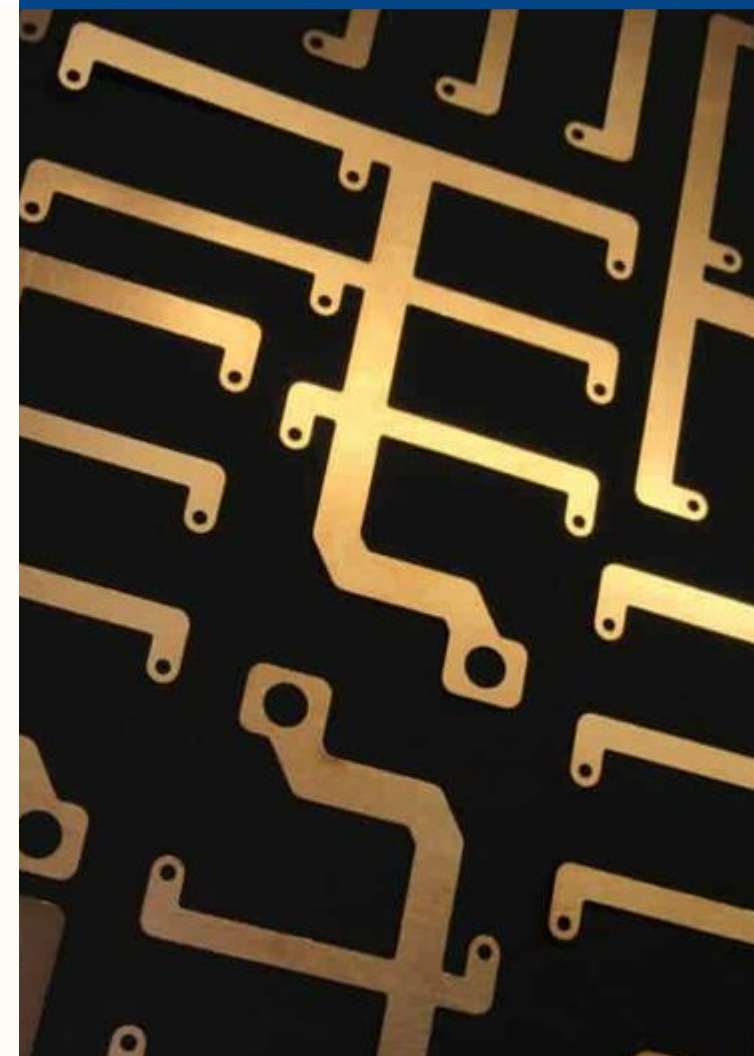
Masteretch can also supply all ancillary equipment for the etching process including laminators, UV exposure units and etch chemistry control units.



MASTERETCH MODEL 360



Our entry level etching machine, the 360 is a compact but powerful etching machine that can easily be installed and operated in sign shops, research laboratories, universities and fabrication labs.



Conveyor width	360mm (14")
Conveyor control	DC shunt motor with digital readout speed control
Conveyor drive	1 to 1 polypropylene drive gears
Pump	High torque magnetic drive unit
Filter	Lift out filter on input side of pump
Heating	2kw titanium element
Temperature control	Digital readout electronic thermostat
Spray banks	4 top 4 bottom spray bars, with shut off valves
Spray jets	Quick release fan jets
Carryover gap	5 squeegee rollers to prevent solution carryover
Rinse section	Top and bottom spray bars
Base unit	Free standing base unit
Load unload trays	2 x clip on trays
Dimensions	Length 42" + clip on trays 2 x 14" Width 25" x height 48"
Services	Single phase, 1/2" water in, 1 1/2" drain
Sump capacity	75ltr

Safety

- Low liquid level cut out
- Chamber access magnetic interlock
- Fume extraction outlet

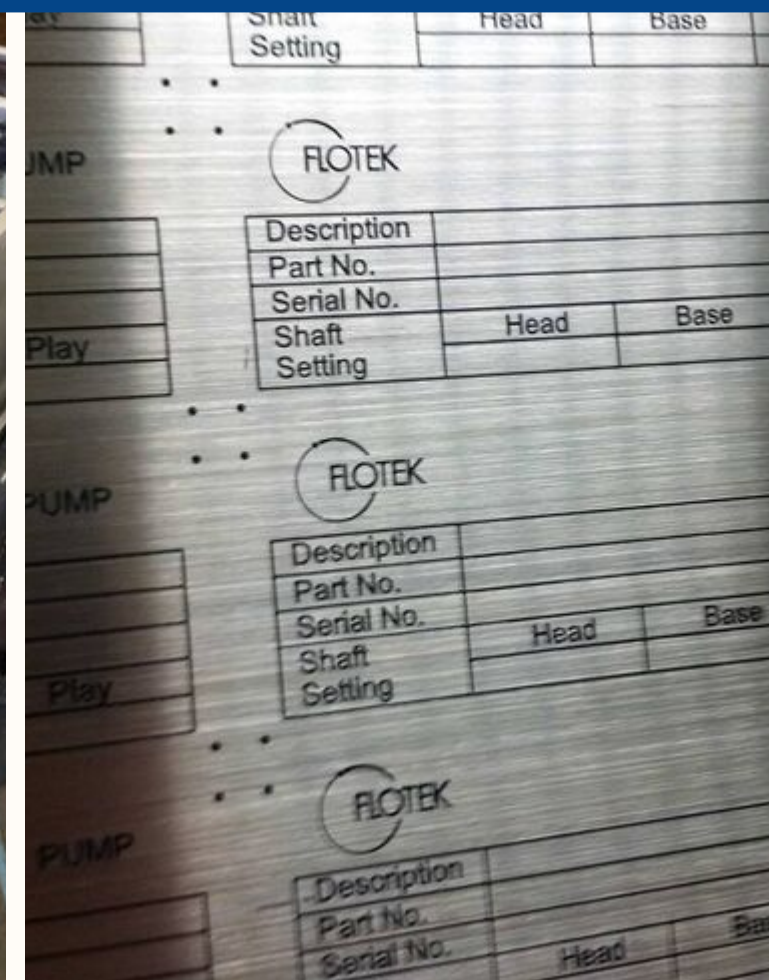
MASTERETCH MODEL 635



Our most popular model with over 400 installations worldwide, the 635 is an ideal machine for companies looking to bring their etching work in-house. Available in Developing, etching and stripping configurations..

Conveyor width	360mm (14")
Conveyor control	DC shunt motor with digital readout speed control
Conveyor drive	1 to 1 polypropylene drive gears
Pump	High torque magnetic drive unit
Filter	Lift out filter on input side of pump
Heating	2kw titanium element
Temperature control	Digital readout electronic thermostat
Spray banks	4 top 4 bottom spray bars, with shut off valves
Spray jets	Quick release fan jets
Carryover gap	5 squeegee rollers to prevent solution carryover
Rinse section	Top and bottom spray bars
Base unit	Free standing base unit
Load unload trays	2 x clip on trays
Dimensions	Length 42" + clip on trays 2 x 14" Width 25" x height 48"
Services	Single phase, 1/2" water in, 1 1/2" drain
Sump capacity	75ltr

- Safety
- Low liquid level cut out
 - Chamber access magnetic interlock
 - Fume extraction outlet



MASTERETCH 650 SERIES



The Model 650 is a powerhouse etching machine ideal for high volume etching and chemical milling operations. The 650 is an ideal machine for customers for whom etching is their main business.

Conveyor width	650mm
Conveyor control	DC shunt motor with digital readout speed control
Conveyor drive	1 to 1 polypropylene drive gears
Pump	2.2kw glandless submersible unit - titanium shaft
Filter	Lift out filter on input side of pump
Heating	3kw titanium element
Temperature control	Digital readout electronic thermostat
Spray banks	5 top 5 bottom spray bars, with shut off valves
Spray jets	Quick release fan jets
Carryover gap	4 squeegee rollers to prevent solution carryover
Rinse section	Top and bottom spray bars
Load unload trays	2 x 375mm trays
Dimensions	Length 1300mm x Width 1040mm x Height 1350mm
Services	3 phase +N 20 amp, 1/2" water in, 1 1/2" drain
Sump capacity	200ltr

Safety

- Low liquid level cut out
- Chamber access magnetic interlock
- Fume extraction outlet



MASTERETCH 750 SERIES



The 750 series is a range of high performance high volume production equipment that can be customised to meet your requirements. The 750 Series is capable of the most demanding applications.

Conveyor width	750mm (30")
Conveyor control	DC shunt motor with digital readout speed control
Conveyor drive	1 to 1 polypropylene drive gears
Pump	2.2kw glandless submersible unit
Filter	External access lift out filter baskets
Heating	3kw titanium element
Temperature control	Digital readout electronic thermostat
Spray banks	6 top 6 bottom, quick release fan jets
Carryover gap	4 sets squeegee rollers to prevent solution
carryover	
Rinse 2 stages, pumped and fresh	
Pump	High torque magnetic drive unit
Filter	Lift out filter on input side of pump
Spray bars	Top and bottom spray bars
Fresh rinse	Top and bottom spray bars, overflow to pumped
stage	stage
Dimensions	L: 1500mm (60") W: 1200mm (48") H: 1200mm (47")
)Services	3 phase, ½" water in, 1 ½" drain

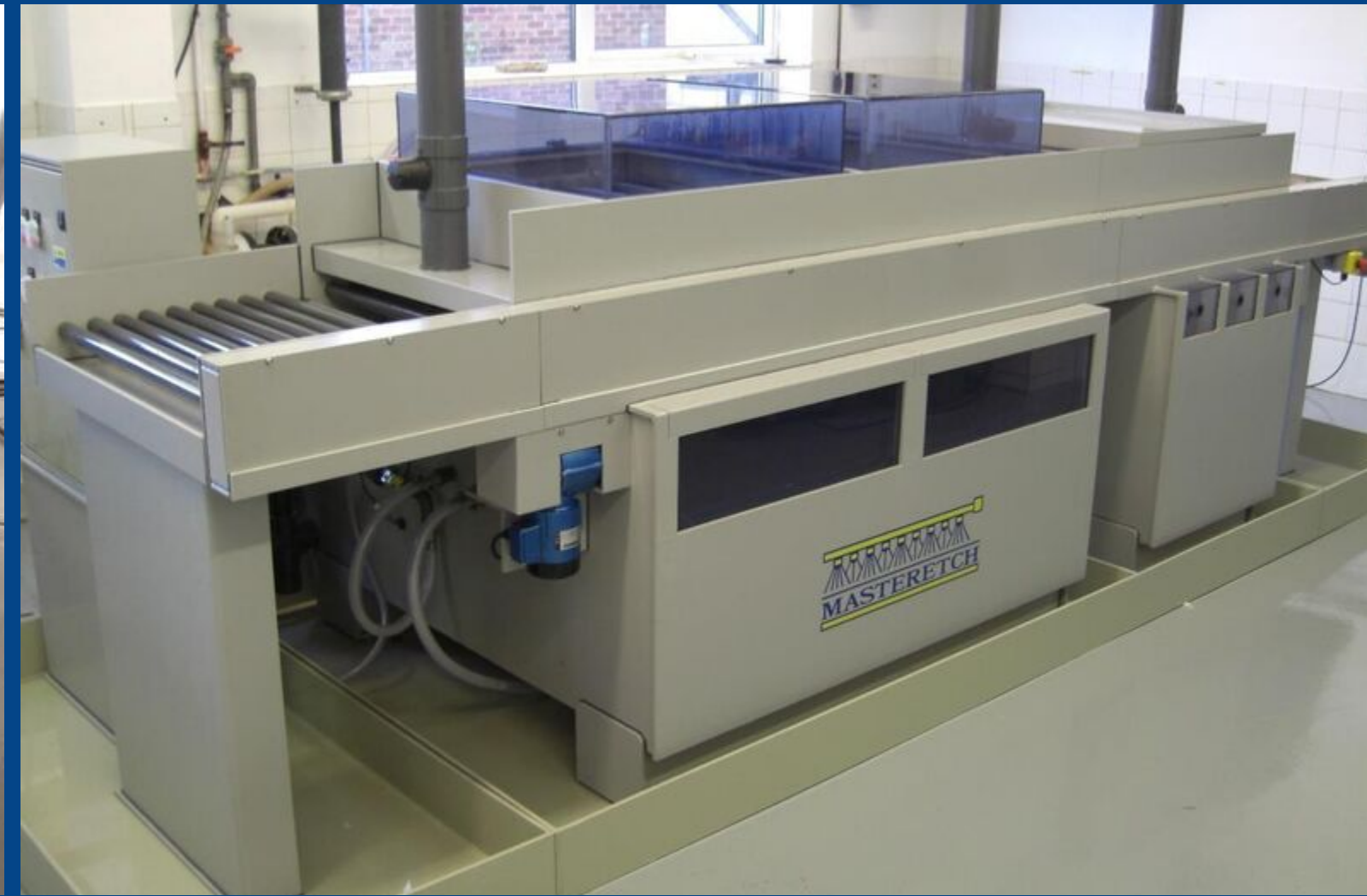
- Safety
- Low liquid level cut out
 - Chamber access magnetic interlock
 - Fume extraction outlet



MASTERETCH 750 SERIES ETCH LINE



MASTERETCH 750 SERIES ETCH LINE





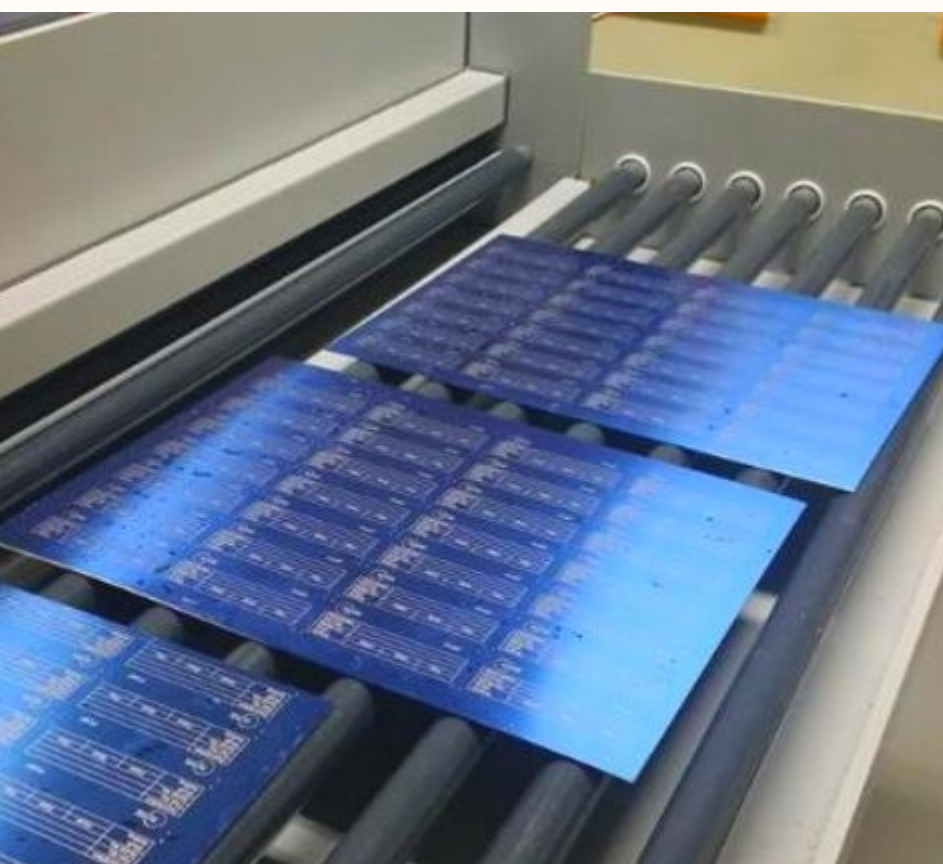
CUSTOM ETCHING EQUIPMENT

MASTERETCH BUILT FOR YOU

Our in-house fabrication and design expertise means we are able to work with our customers to deliver entirely unique solutions. Masteretch have helped our customers overcome some of the toughest challenges in the etching industry. These range from wide format etching machines for major architectural projects to boundary pushing laboratory etching equipment for leading electronics companies and universities..

Custom etching equipment designed and manufactured by Masteretch include:

- ◆ Wide Format Etching Equipment
- ◆ Titanium Etching Equipment
- ◆ Cylinder Etching Equipment
- ◆ Cabinet Etching Equipment



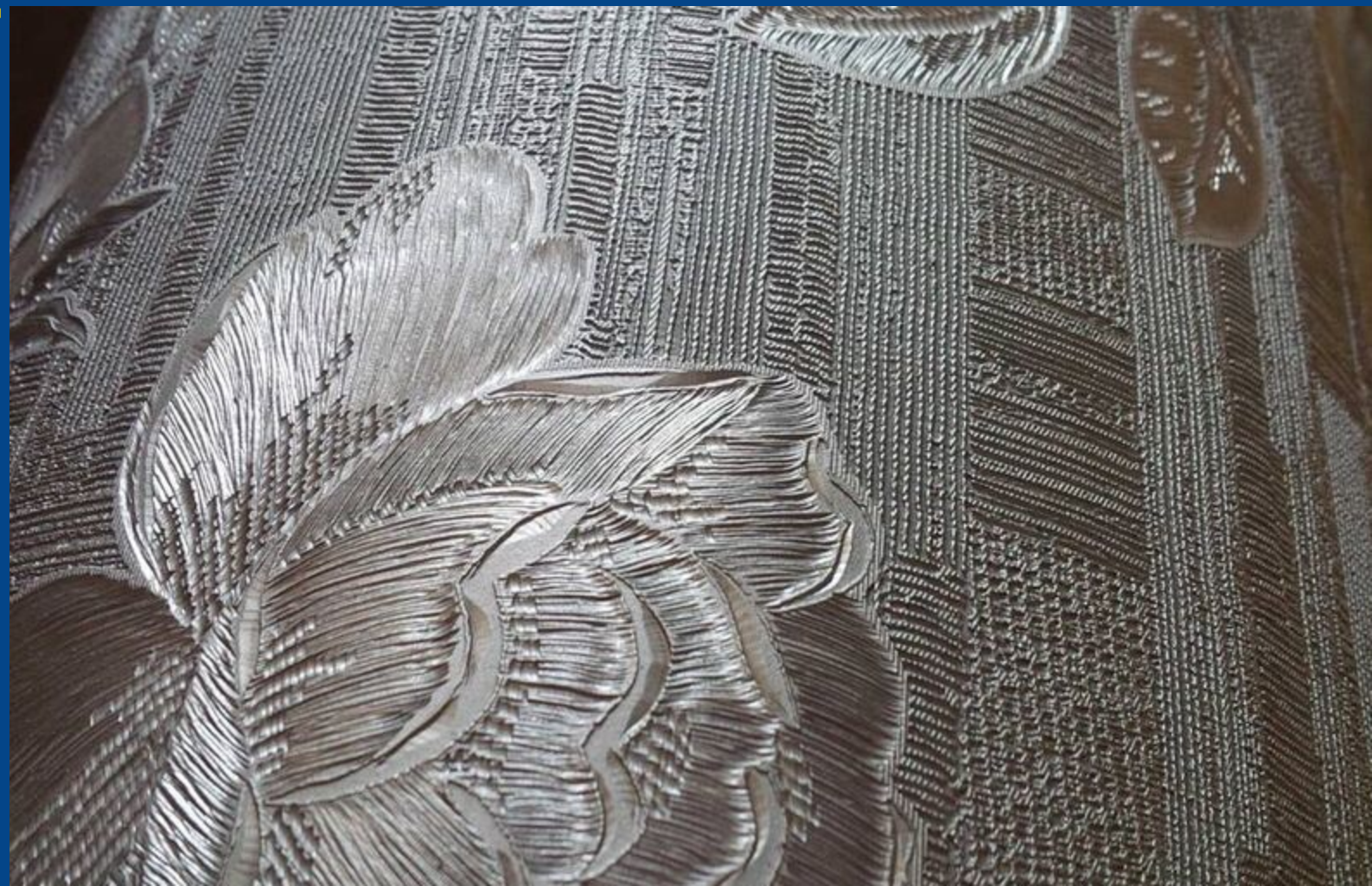
WIDE FORMAT ETCHING EQUIPMENT



TITANIUM ETCHING EQUIPMENT



CYLINDER ETCHING EQUIPMENT



CABINET ETCHING EQUIPMENT





Masteretch Services
10 Pywell Court
Corby
NN17 5WA
UK

Tel: +44 1536 266 288



sales@masteretching.com



www.masteretching.com