



DUAL-VISION CAMERA FOR AUTOMATIC INCIDENT DETECTION

ITS-SERIES DUAL AID 316L



FLIR ITS-Series Dual AID cameras combine best-in-class thermal and visual imaging technology with advanced video analytics to provide a complete solution for automatic incident detection, data collection and early fire detection. FLIR's traffic video analytics have proven their effectiveness along highways and in tunnels worldwide. Now combined with the power of thermal imaging, they allow traffic operators to see clearly in total darkness, in bad weather and over a long range.

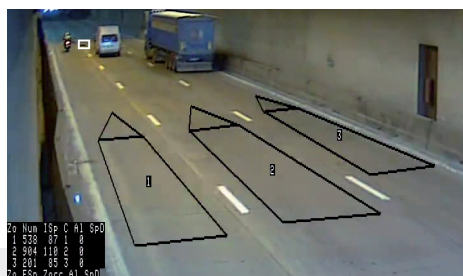
www.flir.com/products/its-series-dual-aid



24/7 THERMAL IMAGING

The FLIR ITS-Series Dual AID offers long-range performance, regardless of weather conditions or time of day.

- Thermal camera detects the heat energy given off by everything in their field of view
- By ignoring visible light, the thermal camera sees through sun glare, darkness, headlights, shadows, wet streets, snow, and light fog
- The thermal camera isn't damaged when looking continuously into direct sun light



INCLUDES A VISUAL CAMERA

A visible-light camera enables real-time visual incident verification and collection of forensic evidence after traffic incidents.

- Daylight/low light camera
- Motorized optical zoom
- Simultaneous visible and thermal output



AUTOMATIC INCIDENT DETECTION

The ITS-Series Dual AID provides critical information about traffic incidents and detects fires within seconds of ignition.

- Measures the temperature of objects and all surfaces within view, even through smoke
- Detects fires at early stages more quickly than traditional fire detection systems
- Intelligent fire detection algorithm considers multiple parameters—including size, dynamics, growth rate, and movement of fire
- No contact with flames or hot gases required

SPECIFICATIONS

Overview	
Detector Type	Focal Plane Array (FPA), uncooled Vanadium Oxide Microbolometer
Dimensions	Housing only: 185 x 102.24 x 409 mm With bracket: 346 x 256 x 409 mm
Housing material	Stainless steel 316L
Mounting	Wall, pole, ceiling mount
Spectral Range	7.5 to 13.5 μ m
Connectivity	RJ45 connector Optional fiber optics on connector (MM/SM) plus 24Vdc power connector 2 optional digital outputs
Analytics	
Automatic Incident Detection	Traffic events: Stopped vehicle, speed drop, levels of service, overspeed, wrong-way drivers, traffic congestion, underspeed Non-traffic events: Smoke in tunnel, pedestrian, fallen object Technical alarms: Image quality, camera tampering
Traffic Data Collection	Traffic flow data per lane: Traffic flow speed, zone occupancy Integrated vehicle traffic data: Average speed per vehicle class per lane (headway, gap time per length, class per lane), occupancy Individual vehicle traffic data: Speed, gap time, headway, vehicle classification
Fire Detection	Early fire detection in tunnels
Connections & Communications	
Interface	10/100 Mbps Ethernet (RJ-45) or Direct fiber connector (MM, SM)
Supported Protocols	IPv4/v6, TCP/IP, UDP, RTP, RTSP, HTTP, HTTPS, ICMP, FTP, SMTP, DHCP, PPPoE, UPnP, IGMP, SNMPv1/2/3, QoS, ONVIF, 802.1X
Video Over Ethernet	Two independent channels for each camera (4 total) of streaming H.264 or M-JPEG
API	ONVIF Profile S
Electrical & Mechanical	
Consumption	12W heater off, 21W heater on
Weight	5kg
Connectors	IP67 network and power connector
Environmental	
Ingress Protection	IP66 / IP67
Operating temperature Range (with sunshield)	-30°C to +75°C (-22°F to 167°F) - Nema TS-2
Relative Humidity	0% to 100%, no condensation
Imaging & Optical	
Image Frequency	NTSC: 30 Hz PAL: 25 Hz
Image Processing	Automatic Gain Control (AGC), Digital Detail Enhancement (DDE)
Image Sensor	1/3" Sony CMOS sensor
Streaming Resolution	Visual: up to 1920 x 1080 @ 30 Hz Thermal: up to 640 x 480 @ 30 Hz
Resolution - Visual	Max: 1920 x 1080
Storage	
Storage options	Micro SD card, 32 GB, NAS
Local recording	Continuous, scheduled, alarm
Power	
Power Options	Standard PoE(+) autodetecting, 24Vac/dc
Thermal Imaging	
Focal Length	9/13/19/25/35mm
Native Resolution	640 x 512
Visible Camera	
Optical Zoom - Visible	10x motorized optical zoom
Focal length	4.9 -> 49mm

Specifications are subject to change without notice. For the most up-to-date specs, go to www.flir.com

CORPORATE HEADQUARTERS
FLIR Systems, Inc.
1201 S. Joyce Street
Suite C006
Arlington, VA 22202
USA
PH: +1-877-692-2120

FLIR Systems, Inc.
27700 SW Parkway Ave.
Wilsonville, OR 97070
USA
PH: +1 866.477.3687

BOSTON
FLIR Systems, Inc.
9 Townsend West
Nashua, NH 03683
USA
PH: +1 866.477.3687

CANADA
FLIR Systems, Ltd.
920 Sheldon Court
Burlington, ON L7L 5K6
Canada
PH: +1 800.613.0507

LATIN AMERICA
FLIR Systems Brasil
Av. Antonio Bardella, 320
Sorocaba, SP 18085-852
Brasil
PH: +55 15 3238 8070

www.flir.com
NASDAQ: FLIR

Equipment described herein is subject to US export regulations and may require a license prior to export. Diversion contrary to US law is prohibited. Imagery for illustration purposes only. Specifications are subject to change without notice. ©2021 FLIR Systems, Inc. All rights reserved. REV 03/21

21-0337-INS-A4



The World's Sixth Sense®