

CONSTRUCTION NOTES

A. SUPPORT CONSTRUCTION: ALL CEILING BULKHEADS TO HAVE WOOD BLOCKING CAPABLE OF SUPPORTING & TOP HUNG SLIDING DOOR LOAD OF 220 lbs (100 kg) WITH NO MORE THAN 1/16" DEFLECTION.

B: FLOOR SLAB LEVEL: ALL FINISHED FLOOR SLABS AND/OR RAISED ACCESS FLOORS TO BE LEVELED TO A TOLERANCE OF 1/4" SLOPE OVER THE WIDTH OF THE SLIDING DOOR TRAVEL 6 FEET & 3 FEET WITH PIVOT DOOR UON.

C: QUALITY CONSTRUCTION: ALL DRYWALL OPENINGS MUST BE BUILD PLUMB, SQUARE AND LEVEL. NELLO WALL SYSTEMS RETAINS THE RIGHT TO REQUEST THAT POORLY CONSTRUCTED OPENINGS TO BE REWORKED BY GC.

B: FLOOR SLAB LEVEL: ALL FINISHED FLOOR SLABS AND/OR RAISED ACCESS FLOORS TO BE LEVELLED TO A TOLERANCE OF 1/4" SLOPE OVER THE WIDTH OF THE SLIDING DOOR TRAVEL 6 FEET & 3 FEET WITH PIVOT DOOR UON.

10'-0" VIF

OFFICE
101

6'

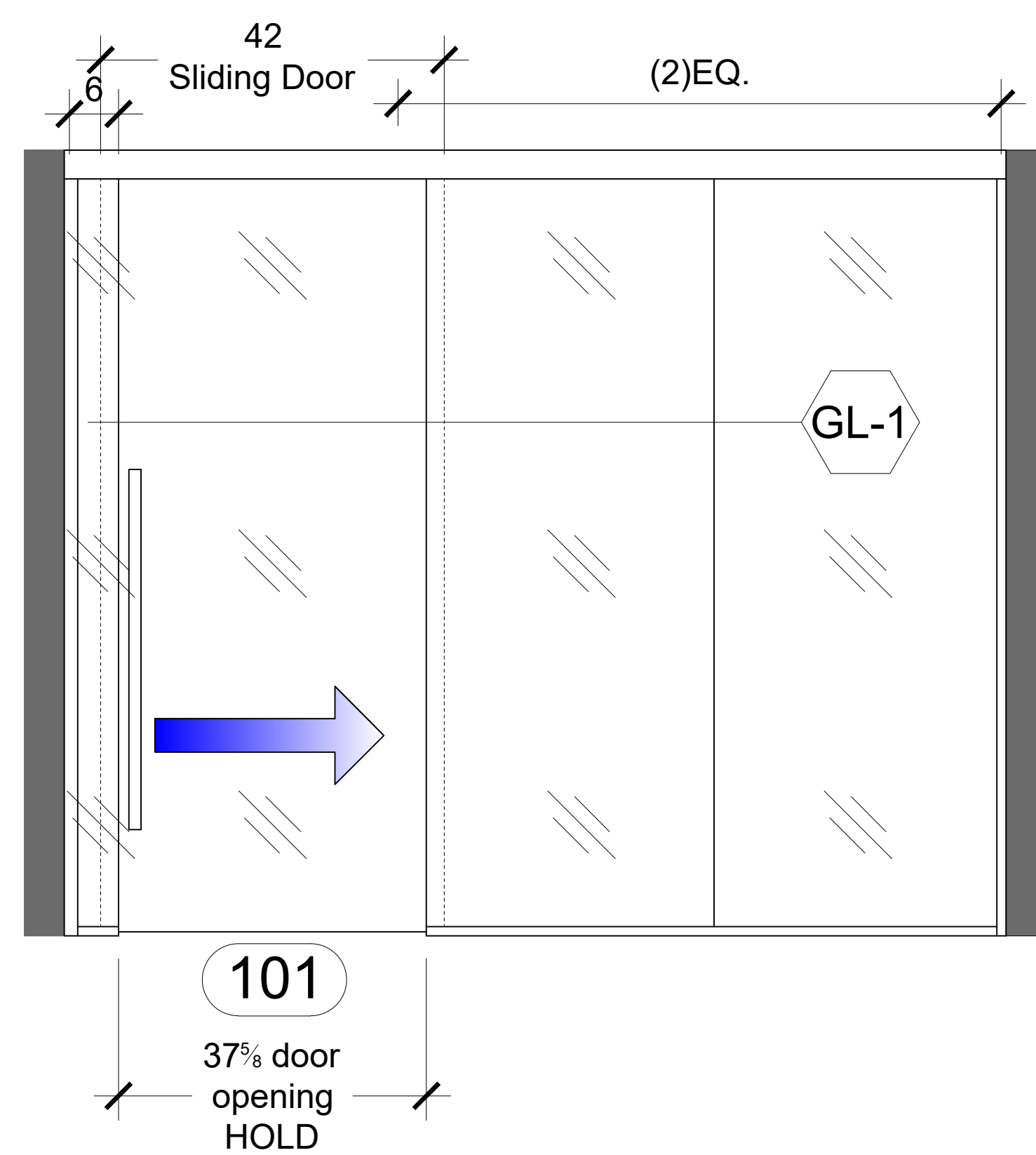
37% door
opening
HOLD

(2)EQ.

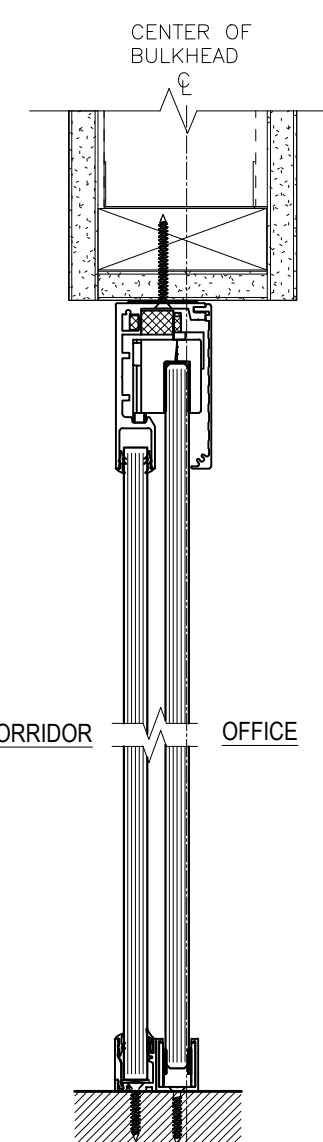
9'-7 1/8" VIF

PLAN: TYPICAL OFFICES WITH SLIDING GLASS DOOR

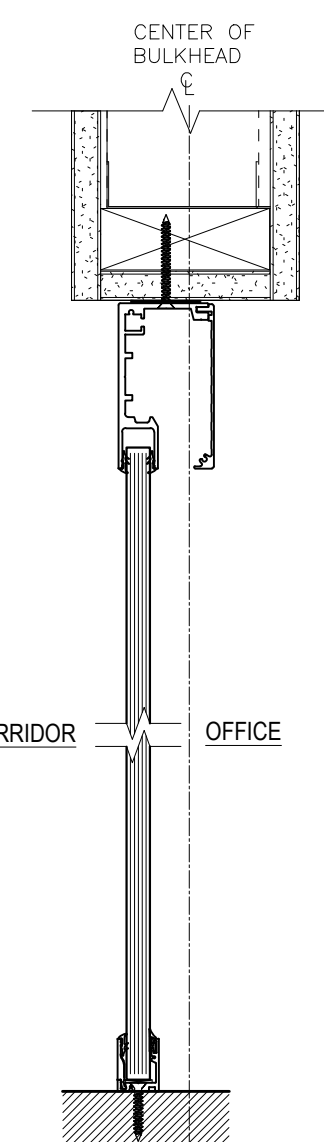
PLAN: TYPICAL OFFICES WITH SLIDING GLASS DOOR



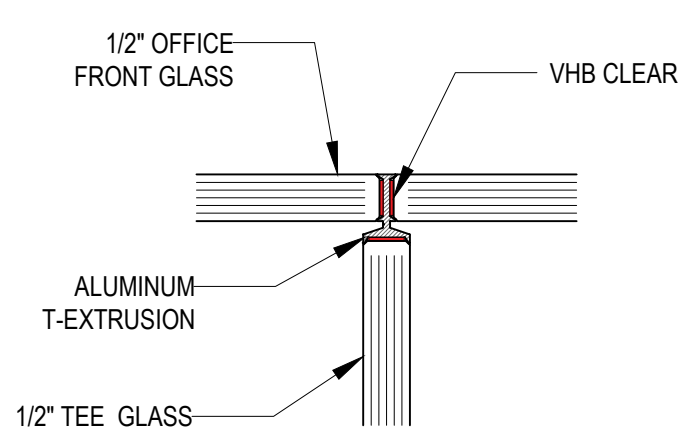
ELEVATION: TYPICAL OFFICES WITH SLIDING GLASS DOOR



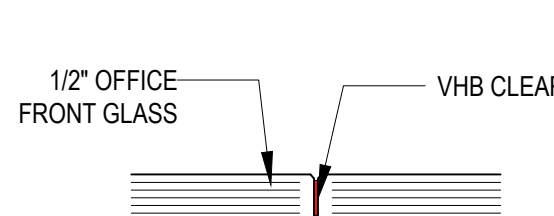
SECTION: TYPICAL OFFICES WITH SLIDING GLASS DOOR



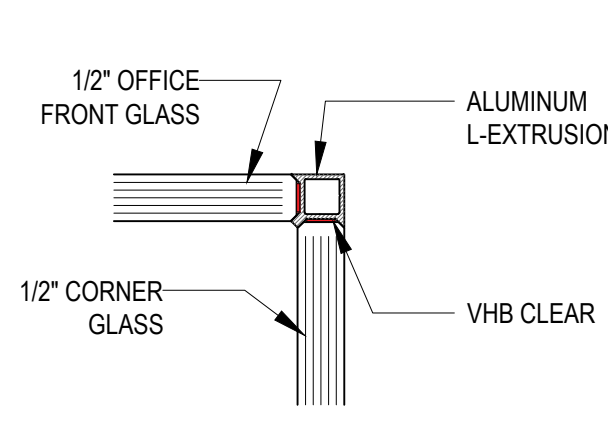
SECTION: TYPICAL OFFICES FRONT WALL



DETAIL: T-CONNECTION



DETAIL: STRAIGHT CONNECTION



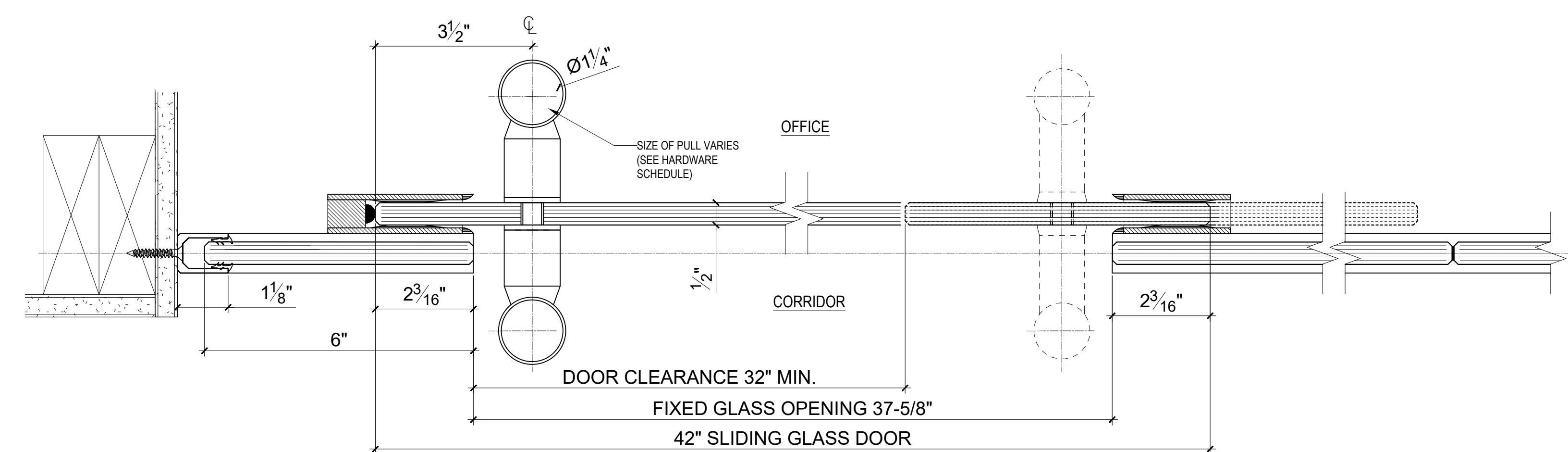
DETAIL: L-CONNECTION
Scale: 6" = 1'

DOOR SCHEDULE														
DOOR									FRAME					
DOOR NUMBER	ROOM NAME	SIZE			MATERIAL	TYPE	THRESHOLD	FINISH	MATERIAL	FINISH	DETAIL		HARDWARE SET	COMMENTS
		W	H	T							HEAD	JAMB		
101	Office	3'-6"	8'-0"	1/2"	Glass	D-1	T-1	CLEAR ANODIZED	-	-	H-1	J-1	HW-1	CLARITY By Nello Wall
101 (OPTION)	Office	3'-6"	8'-0"	1/2"	Glass	D-2	T-1	CLEAR ANODIZED	-	-	H-1	J-1	HW-2	CLARITY By Nello Wall

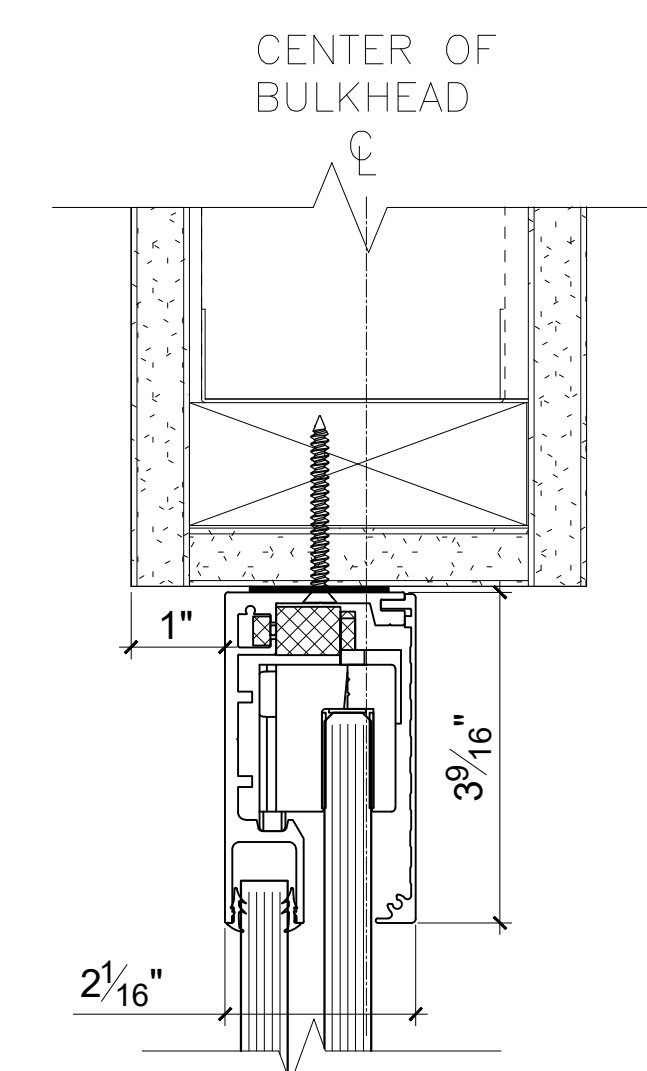
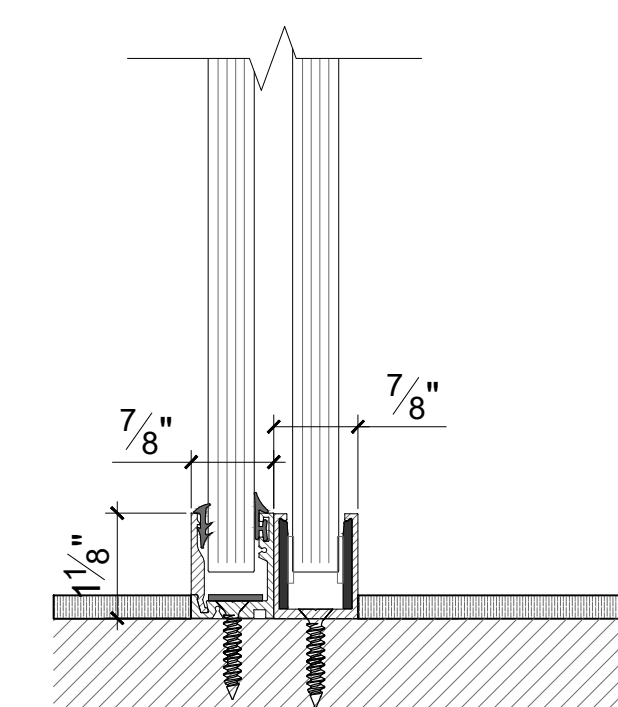
The diagrams illustrate two door configurations:

- DOOR TYPE - D-1: FRAMELESS GLASS SLIDING / NON-LOCKING**
 - The door is shown within a frame.
 - A vertical dimension line on the left is labeled "AS SCHED."
 - A horizontal dimension line at the bottom is labeled "AS SCHED."
 - A blue arrow indicates the door's sliding motion to the right.
 - A dashed line at the top indicates the door's height.
- DOOR TYPE - D-2: FRAMELESS GLASS SLIDING / LOCKING**
 - The door is shown within a frame.
 - A vertical dimension line on the left is labeled "AS SCHED."
 - A horizontal dimension line at the bottom is labeled "AS SCHED."
 - A blue arrow indicates the door's sliding motion to the right.
 - A dashed line at the top indicates the door's height.
 - A small vertical line on the left edge of the door indicates a locking mechanism.

HARDWARE SCHEDULE				
SET	HW-1	SINGLE 1/2" GLASS SLIDING DOOR - NO LOCKING		
	COUNT	REF	DESCRIPTION	FINISH
	1	NC100CCRC	Nello Clarity 100 Control Close Roller Car	
	1	NC100CCD	Nello Clarity 100 Control Close Device	
	1	NC100CCRTS	Nello Clarity 100 Control Close Roller Track Stop	
	1	NCBG	Nello Clarity Base Guide	CLEAR ANODIZED
	1	NCBGS	Nello Clarity Base Stop	CLEAR ANODIZED
	1	XP44-BSS	44" Non Locking Ladder Pull - BSS (CONVERTIBLE)	BSS
SET	HW-2	SINGLE 1/2" GLASS SLIDING DOOR - LOCKING		
	COUNT	REF	DESCRIPTION	FINISH
	1	NC100CCRC	Nello Clarity 100 Control Close Roller Car	
	1	NC100CCD	Nello Clarity 100 Control Close Device	
	1	NC100CCRTS	Nello Clarity 100 Control Close Roller Track Stop	
	1	NCBG	Nello Clarity Base Guide	CLEAR ANODIZED
	1	NCBGS	Nello Clarity Base Stop	CLEAR ANODIZED
	1	URHD-54-44-BSS	54"44" Locking Ladder Pull - BSS (CONVERTIBLE)	BSS



J-1 SLIDING GLASS DOOR AT JAMB Scale: 6" = 1'

H-1 SLIDING GLASS DOOR AT HEAD Crafter: 6' x 11'

T-1 SLIDING GLASS DOOR TRANSITION

Title:

CLARITY DESIGN ELEMENTS

100 FRAMELESS GLASS SLIDING DOORS

<i>Drawing#:</i>	<i>Revision#:</i>	<i>Date:</i>
CL-001	REV.1	4/26/2021

In accordance with the law, we reserve the exclusivity rights of this drawing. Its reproduction or disclosure to third party is forbidden without our express authorization.

6685 Santa Barbara Ct.
Suite A
Elkridge, MD 21075
USA
<http://www.nellowall.com>
info@nellowall.com
410.579.8533