

## Coarse Wavelength Division Multiplexer – CWDM bandsplitter 4 skip 0, splits red CWDM band in 4+4 channels

### Features

- High isolation bandsplitter for CWDM grid
- Upgrade channel, integrated bandsplitters and tap ports available
- Micro-hybrid construction in a sealed metal housing
- Epoxy-free optical path, ITU G.694.2 and Telecording GR1221 compliant
- Extremely small component dimensions: 19 x 15.5 x 9 mm<sup>3</sup>, other dimensions on request
- Also available as integrated Patch Cord CWDM for flexible system configurations to enable multiplexing without using any board space
- Single mode and multi mode fibers possible, fiber packaging: loose tube or 250 µm coating
- Packaging on line card or in CWDM sub-system for rack mounting on request

### Applications

- Combines / separates 2 bands of the CWDM channel grid
- Metro Core, Metro Access, Metro Enterprise, Cable TV, 3G Telephony (UMTS), Datacomm, WAN, RFTS, Sensor Applications
- Analog and digital transmission systems

### Specifications

Parameters	Coarse Wavelength Division Multiplexer – 4 skip 0 (all values refer to single mode)		
<b>Channels</b>	separation / combination of 2 bands		
<b>Center Wavelength [nm]</b>	common:	1471 / 1491 / 1511 / 1531 / 1551 / 1571 / 1591 / 1611	
	port 1:	1511 / 1531 / 1551 / 1571	or customized
	port 2:	1471 / 1491 / / / 1591 / 1611	or customized
<b>Optical Bandwidth</b>	> 13 nm		
<b>Insertion Loss *</b>	multiplexer	< 1.3 dB	
	demultiplexer	< 1.5 dB	
<b>Link Loss * for mux – demux pair</b>	< 2.8 dB		
<b>Isolation **</b>	multiplexer	> 15 dB	
	demultiplexer	> 30 dB	
	Isolation Spectral Range	1460-1620 nm	
<b>Return Loss *</b>	> 45 dB (50 dB typ.)		
<b>Directivity (for mux)</b>	> 50 dB		
<b>Polarization Dependent Loss</b>	< 0.2 dB		
<b>Max. optical power</b>	250 mW		
<b>Operating Temperature</b>	0°C to 60°C		
<b>Storage Temperature</b>	-40°C to 85°C (when removed from plastic package)		
<b>Package Dimensions</b>	19 x 15.5 x 9 mm <sup>3</sup>		

\* With passband, valid over full temperature range and at all states of polarization but without connector losses.

\*\* Valid over full temperature range and at all wavelengths across the channel.

Additional components according to your specifications on request! Please contact HUBER+SUHNER Cube Optics for further details.

## Coarse Wavelength Division Multiplexer – CWDM bandsplitter 4 skip 0, splits red CWDM band in 4+4 channels

### Ordering Information

Indicate your requirements by selecting one option from each configuration table. Please write the corresponding codes in the available boxes to form your part number. For more information on this or other products and their availability, please contact HUBER+SUHNER Cube Optics AG at +49-6131-69851-0 or via email at sales.cubo@hubersuhner.com.

Ordering example: **C-B4-2-D-A-0-S-11-3-B-15**

**C - B4** -   -   -   -   -   - 1 1 -   -   -

no. of channels	code	mux or demux	code	optional features	code
2 bands	2	mux	M	None	0
		demux	D		

no. of channels	code	center wavelengths [nm]	code
		1511-1571 & 1471 / 1491 / 1591 / 1611	A

housing	code
Standard BSM	S

Fiber length	code	Connector in/out	code
0.5 m	A	none	0
1.0 m	B	SC/PC	1
		FC/PC	2
		SC/APC**	3
		FC/APC**	4
		LC/PC	5
		MU/PC	6
		E2000	7
		E2000/HRL**	8
		ST/PC	9

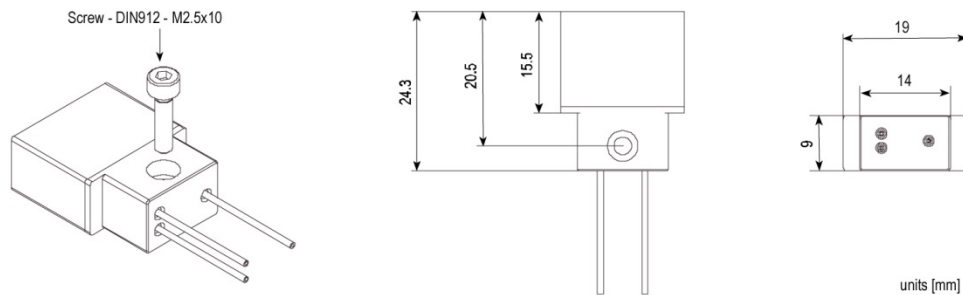
fiber type an packaging	code
Corning SMF-28™ (9,125,250 µm) 900 µm loose tube	1
Corning SMF-28™ (9,125,250 µm) 250 µm coating	2
Multi mode fiber GI (50,125,250 µm) 900 µm loose tube	3*
Multi mode fiber GI (50,125,250 µm) 250µm coating	4*

\* Configuration is not reflected by this datasheet.

in/out put if the device is regarded as demultiplexer connectors only available in combination with loose tube fiber protection  
\*\* 8° angular polishing

Further configuration on request!

### Standard BSM housing



HUBER+SUHNER Cube Optics AG  
Eindhoven-Allee 3  
55129 Mainz, Germany

+49-6131-4995-100  
sales.cubo@hubersuhner.com

www.hubersuhner.com  
www.cubeoptics.com