

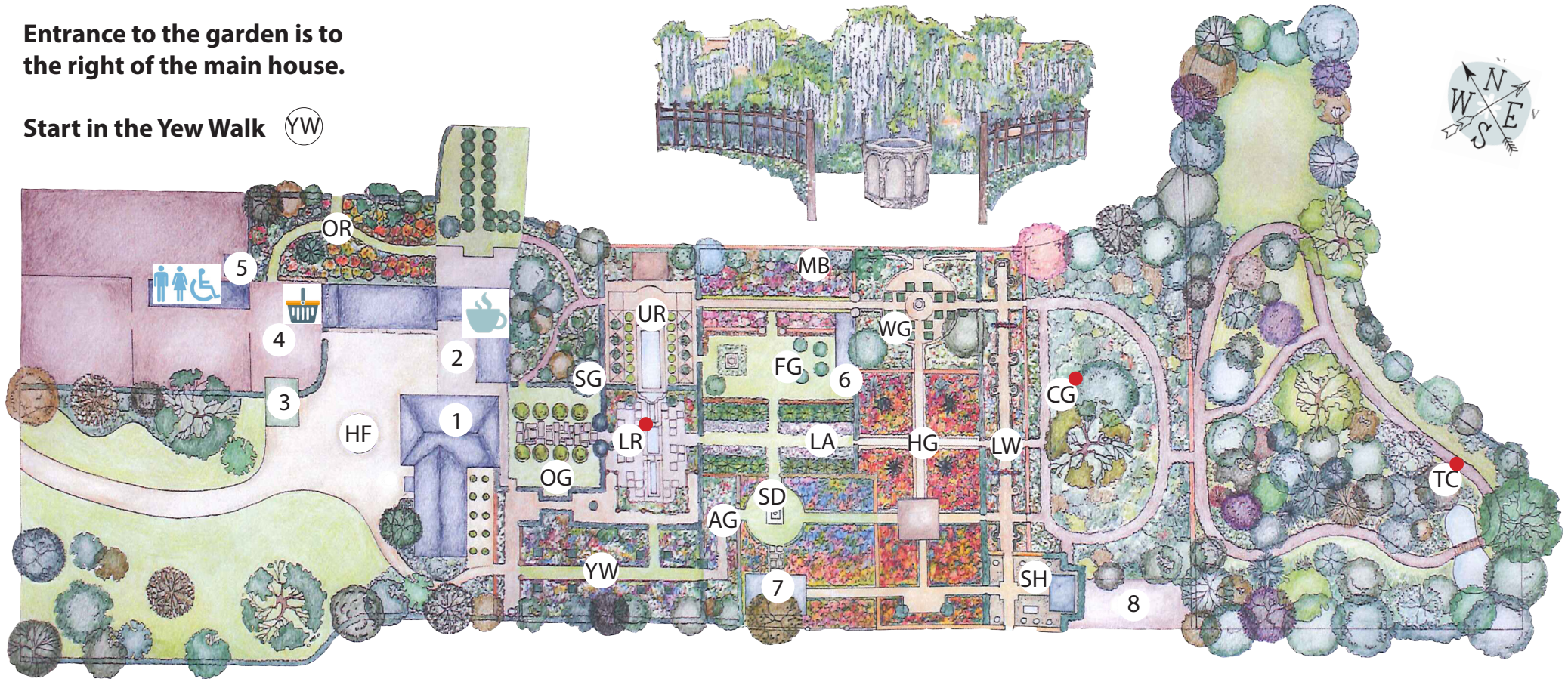
GARDEN MAP

Entrance to the garden is to the right of the main house.

Start in the Yew Walk (YW)



Please do not smoke anywhere in the garden.



Graphics by Christine Johnson

- HF** House Frontage
- OG** Old Garden
- YW** The Yew Walk
- LR** Lower Rill Garden
- AG** Alice's Garden
- SD** Sundial Garden
- SH** Summerhouse Garden
- LW** The Long Walk
- CG** The Croft Garden

- TC** The Croft
- WG** Well Garden
- HG** Lanhydrock (Hot) Garden
- LA** The Lime Allée
- FG** Font Garden
- MB** Main Herbaceous Border
- UR** Upper Rill Garden
- SG** Shade Garden
- OR** Orchard Garden

- 1** Wollerton Old Hall*
- 2** Tearoom
- 3** Ticket Office
- 4** Plant Sales
- 5** Toilets
- 6** Loggia
- 7** Old Summerhouse
- 8** Compost

• Steps and uneven ground - may be unsuitable for wheelchairs, mobility scooters, and pushchairs.

*Please note that the main house is not open to the public

