



[www.sepro-robotique.com](http://www.sepro-robotique.com)

◆ **FRANKREICH (Sitz)**

Sepro Robotique  
Rue Bessemer  
ZI les Ajones - BP 65  
85002 La Roche-sur-Yon  
Tél. : 33 (0)825 887 068  
Fax : 33 (0)2 51 46 10 91  
[sepro@sepro-robotique.com](mailto:sepro@sepro-robotique.com)

◆ **GROßBRITANNIEN**

Sepro Robotique Ltd  
2 Fitzhamon Court  
Featherstone Road  
Wolverton mill  
Milton Keynes MK 12 6LB  
Tel. : (44) 1908 223 116  
Fax : (44) 1908 227 716  
[ltd@sepro-robotique.com](mailto:ltd@sepro-robotique.com)

◆ **DEUTSCHLAND**

Sepro Robotique GmbH  
Paul-Ehrlich-Str. 16-20  
63322 Rödermark  
Tel.: (49) 6074 696 520  
Fax: (49) 6074 696 5269  
[seprogmbh@sepro-robotique.com](mailto:seprogmbh@sepro-robotique.com)

◆ **SPANIEN**

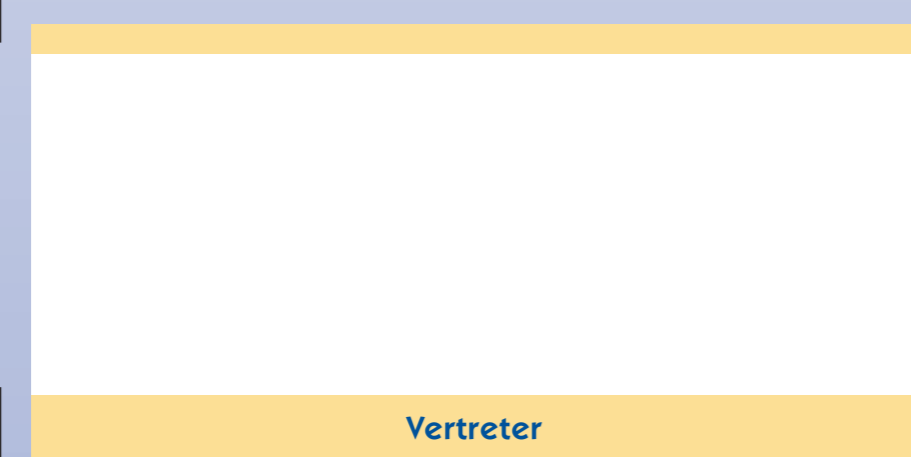
Sepro Robotica SL  
Calle Adolfo Perez Esquivel,  
N. 3 OF. 20  
Parque Empresarial Las Rozas  
28232 Madrid  
Tel. : (34) 91 323 37 65  
Fax : (34) 91 323 46 93  
[seprorobotica@sepro-robotique.com](mailto:seprorobotica@sepro-robotique.com)

◆ **BRASIL**

Sepro do Brasil  
Rua Vicente Preterotti, 721  
Jd. S. Vicente  
13214-730 JUNDIAI  
Tel: (55) 11 4815 4157  
Fax: (55) 11 4815 4158  
[robotassistencia@terra.com.br](mailto:robotassistencia@terra.com.br)

◆ **USA / KANADA**

Sepro America L.L.C.  
1 Conair Drive  
PA 15202 Pittsburgh  
Tel.: (1) 412 459 0450  
Fax: (1) 412 459 0470  
[info@seproamerica.com](mailto:info@seproamerica.com)  
[www.seproamerica.com](http://www.seproamerica.com)

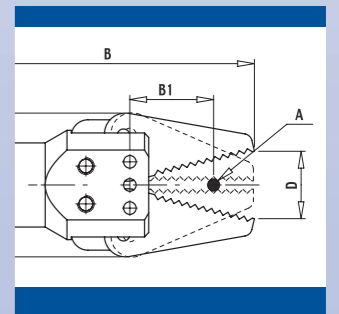
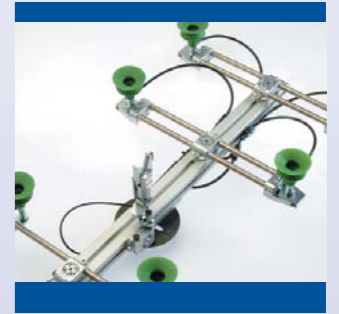


Vertreter

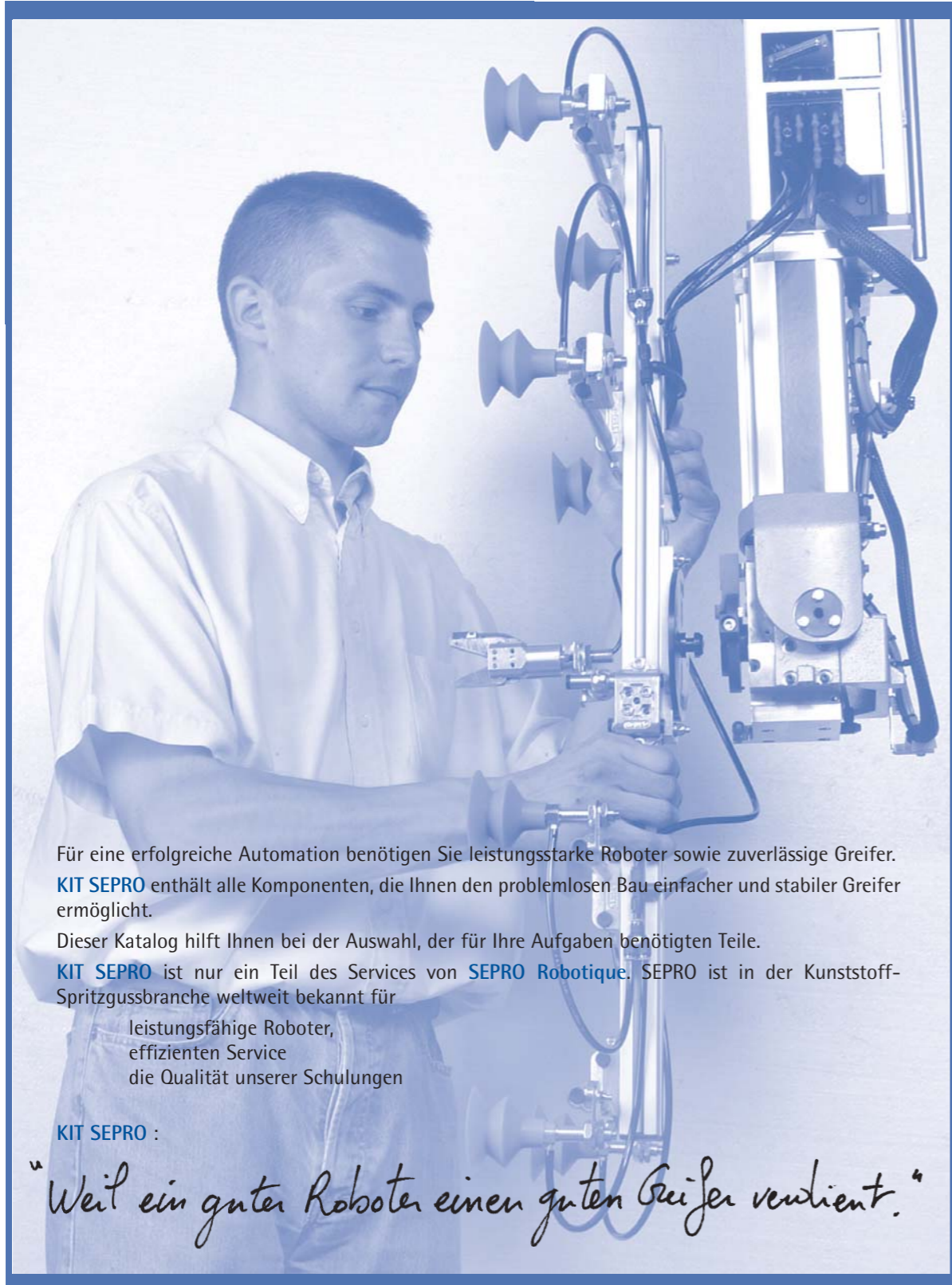
Konzeption und Realisierung ■ präcontact ◆ Nicht rechtsverbindliche Fotos ◆ September 2007

# Kit

sepro



**sepro**



Für eine erfolgreiche Automation benötigen Sie leistungsstarke Roboter sowie zuverlässige Greifer. **KIT SEPRO** enthält alle Komponenten, die Ihnen den problemlosen Bau einfacher und stabiler Greifer ermöglicht.

Dieser Katalog hilft Ihnen bei der Auswahl, der für Ihre Aufgaben benötigten Teile.

**KIT SEPRO** ist nur ein Teil des Services von **SEPRO Robotique**. SEPRO ist in der Kunststoff-Spritzgussbranche weltweit bekannt für

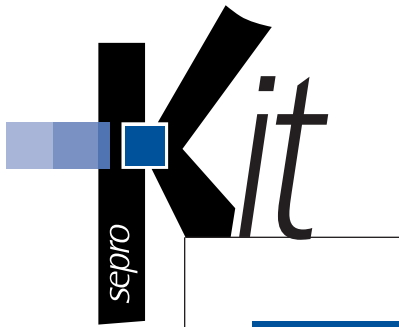
- leistungsfähige Roboter,
- effizienten Service
- die Qualität unserer Schulungen

**KIT SEPRO :**

*„Weil ein guter Roboter einen guten Greifer verdient.“*

Nicht rechtsverbindliche Fotos ♦ Technische Änderungen jederzeit vorbehalten



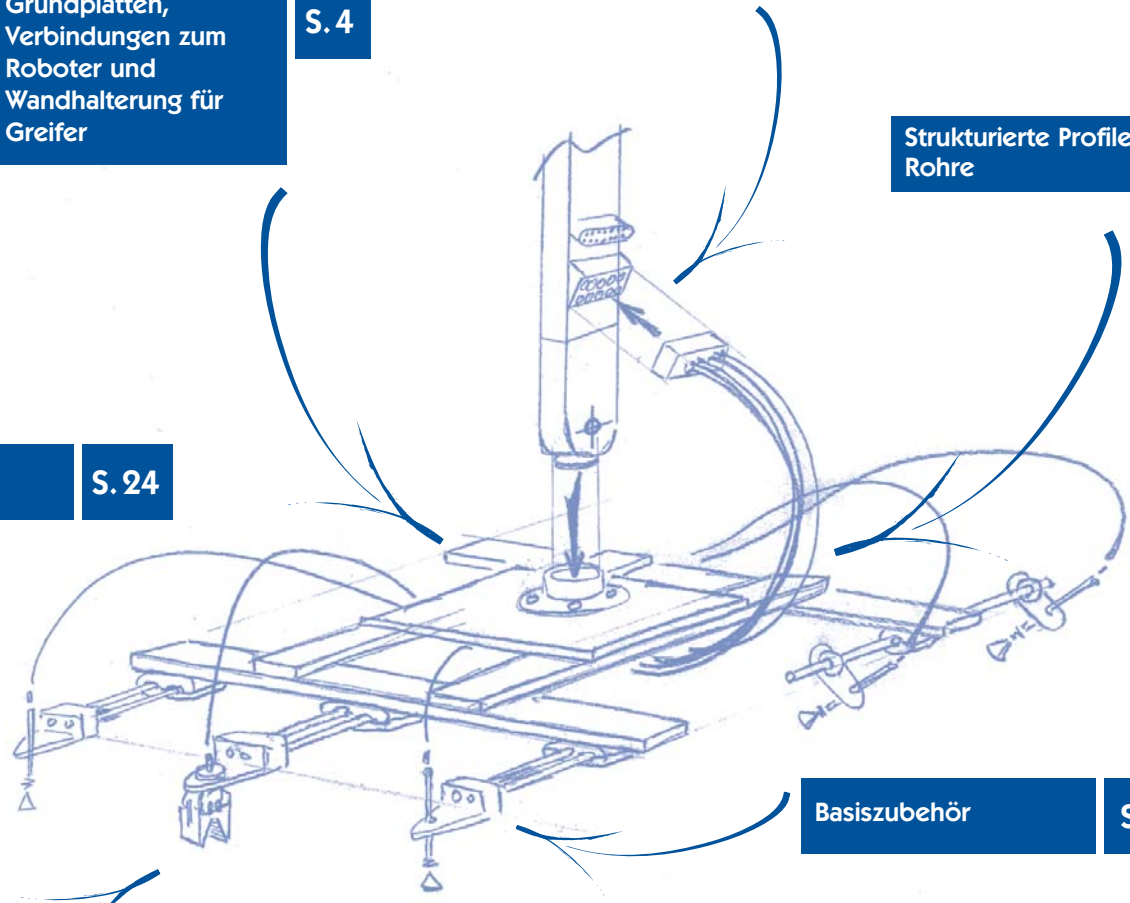


Grundplatten,  
Verbindungen zum  
Roboter und  
Wandhalterung für  
Greifer **S. 4**

Pneumatische  
und elektrische  
Verbindungen **S. 8**

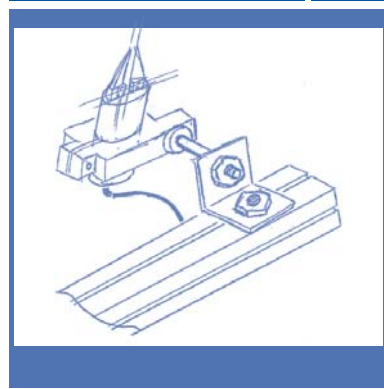
Strukturierte Profile,  
Rohre **S. 10**

Sauger und  
Ansatzstücke **S. 24**



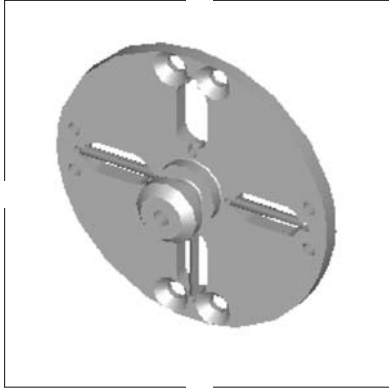
Basiszubehör **S. 22**

Angussabschneider **S. 34**

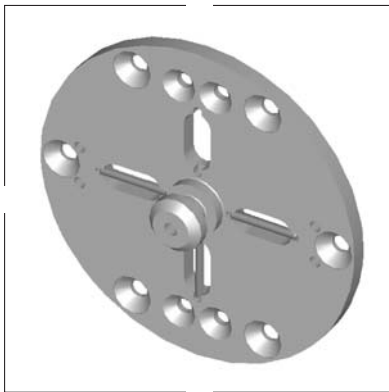
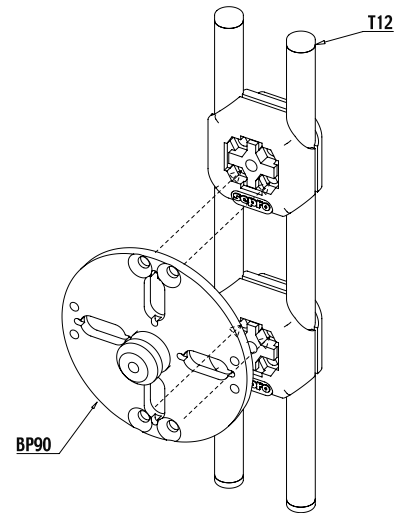
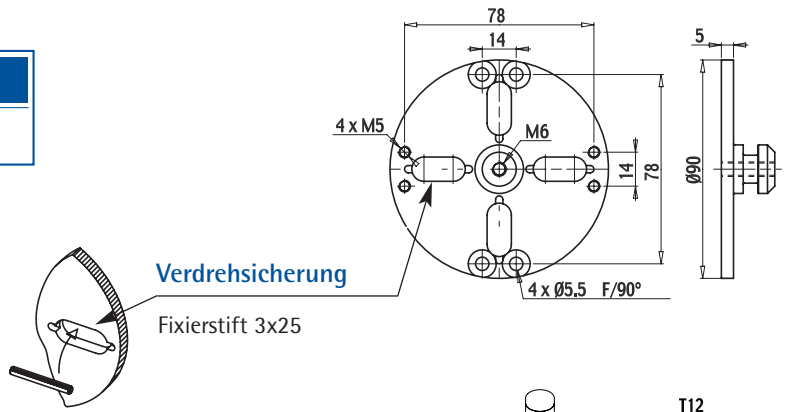


Zangen und  
Greiffinger **S. 28**

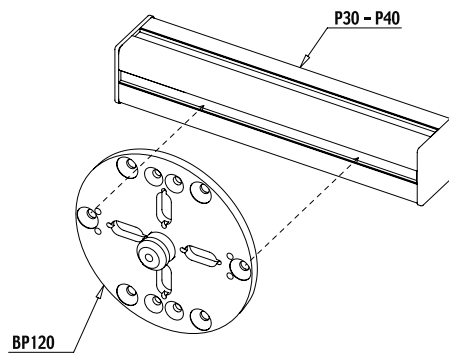
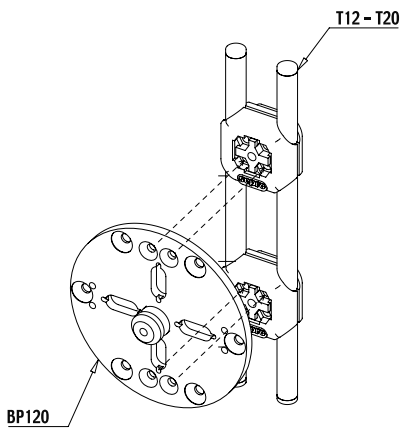
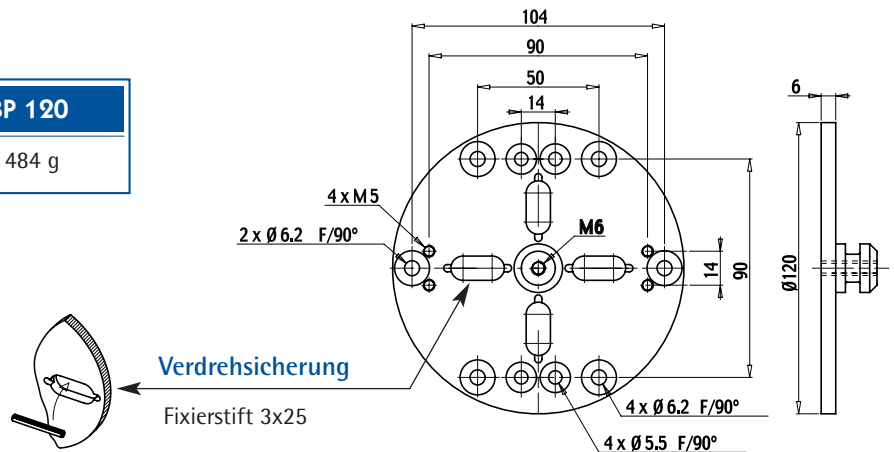
Greifermontage	
◆ Schrauben .....	S.38
◆ Montagehinweise .....	S.38
◆ Pneumatische Verbindungen .....	S.40

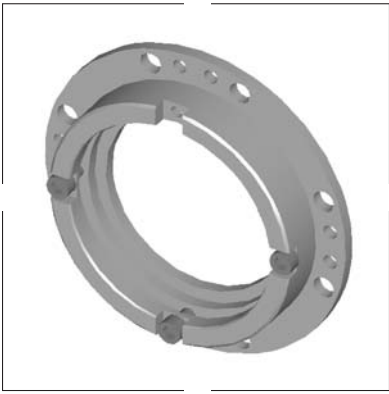


**BP 90**  
233 g

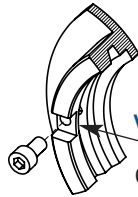


**BP 120**  
484 g



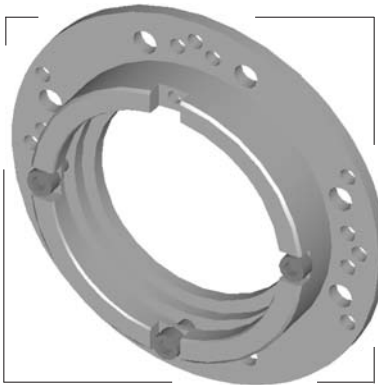
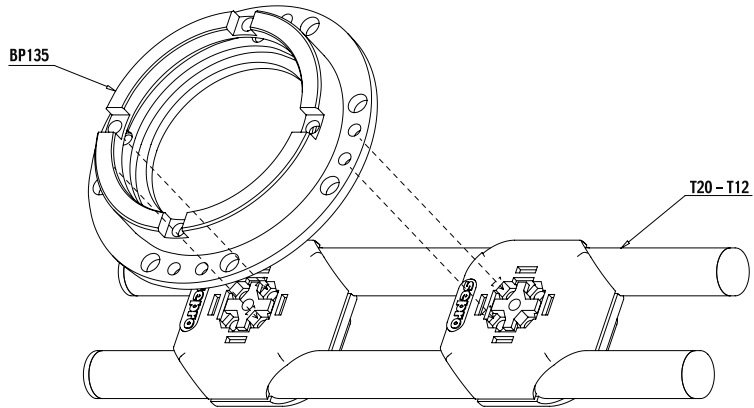
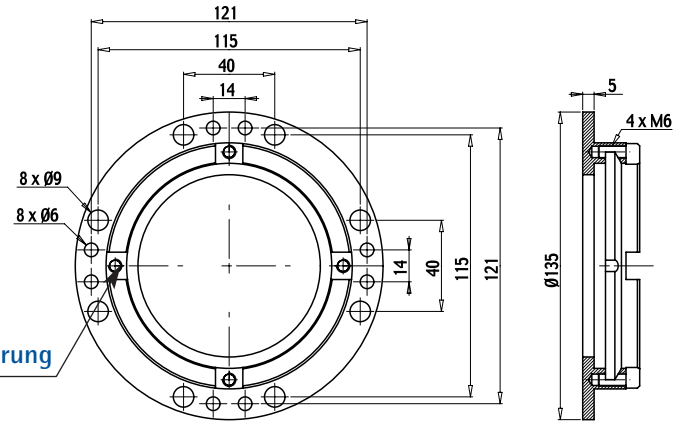


**BP 135**  
677 g

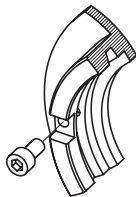


**Verdrehsicherung**

CHC M6 x 16

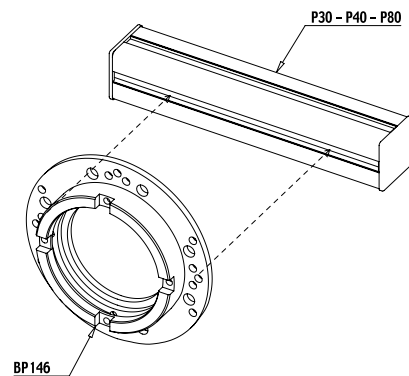
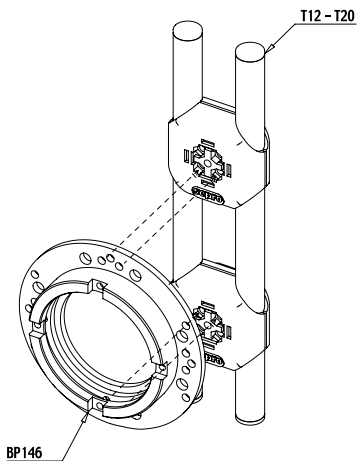
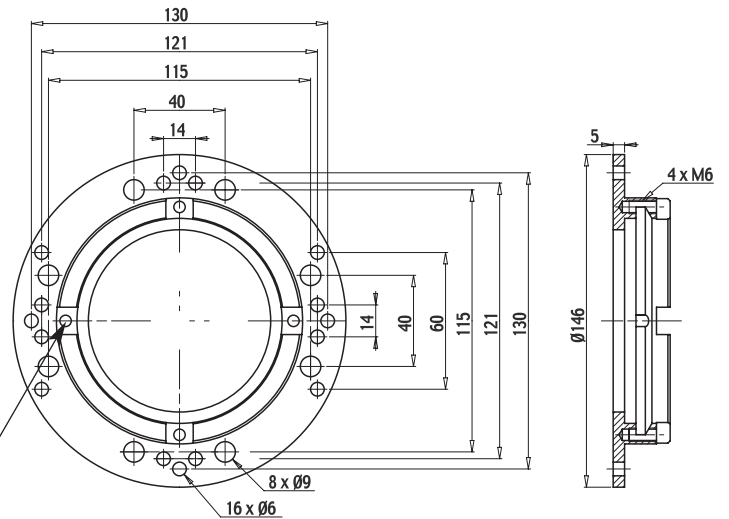


**BP 146**  
764 g

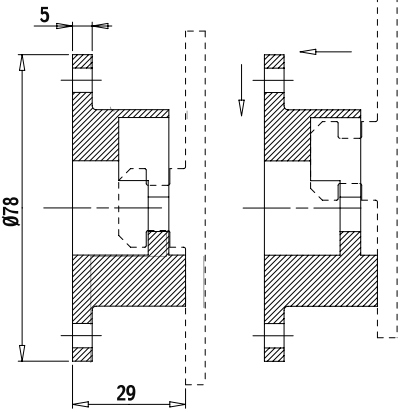
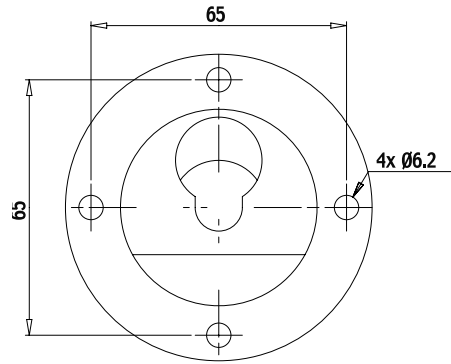
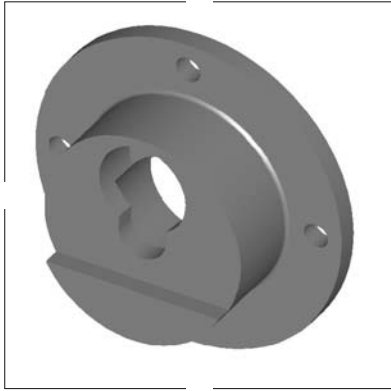


**Verdrehsicherung**

CHC M6 x 16

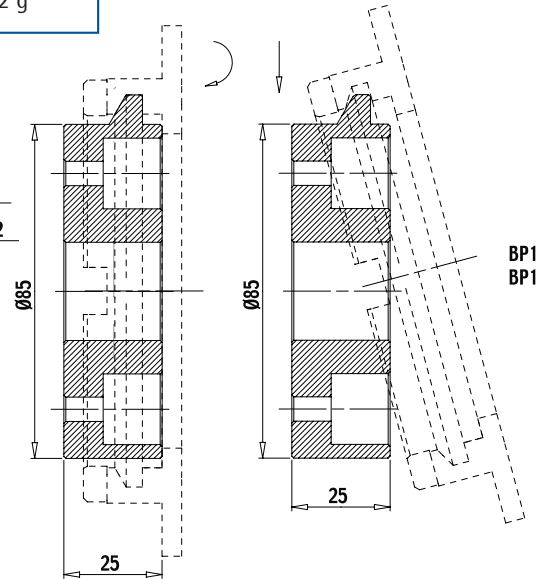
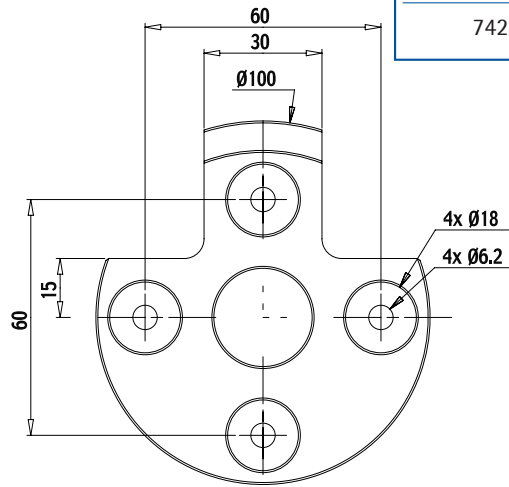
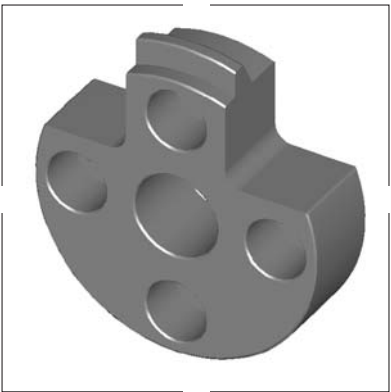


**BPH 1**  
395 g

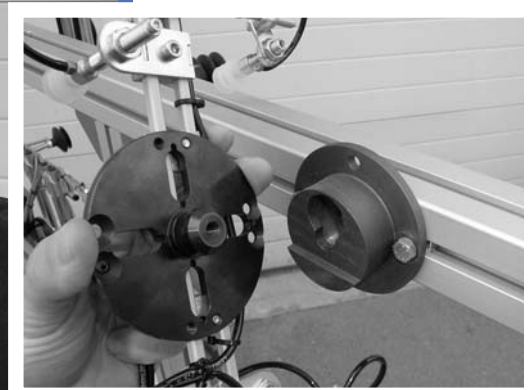


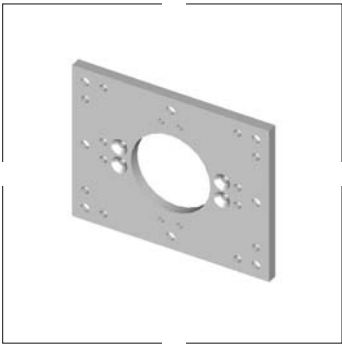
BP90  
BP120

**BPH 2**  
742 g

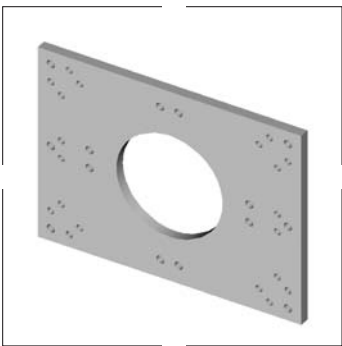
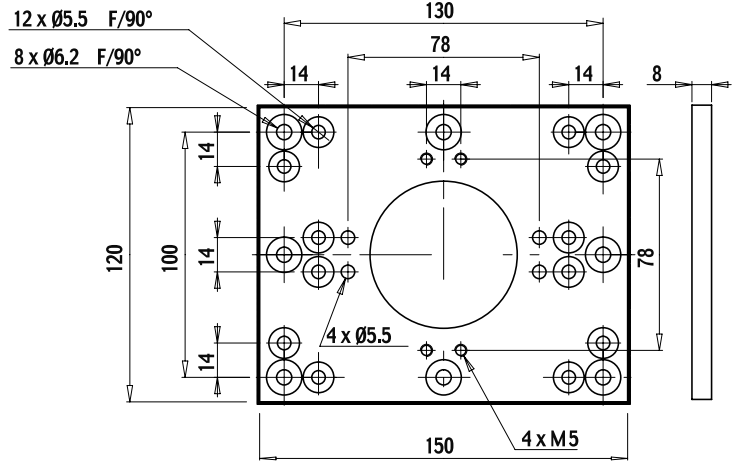
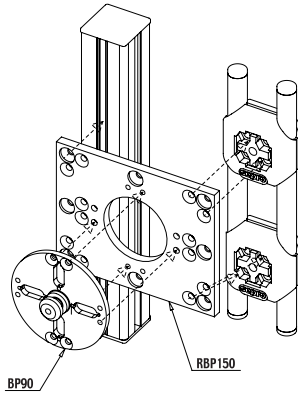


BP135  
BP146

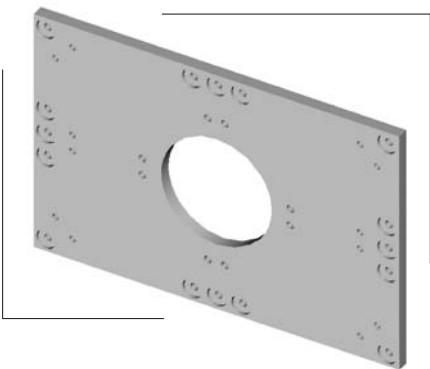
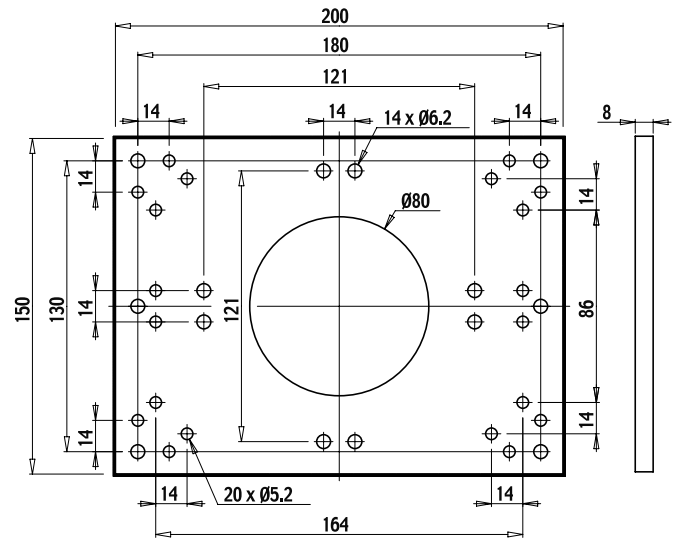
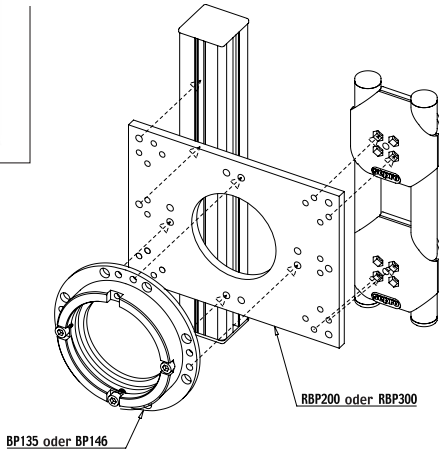




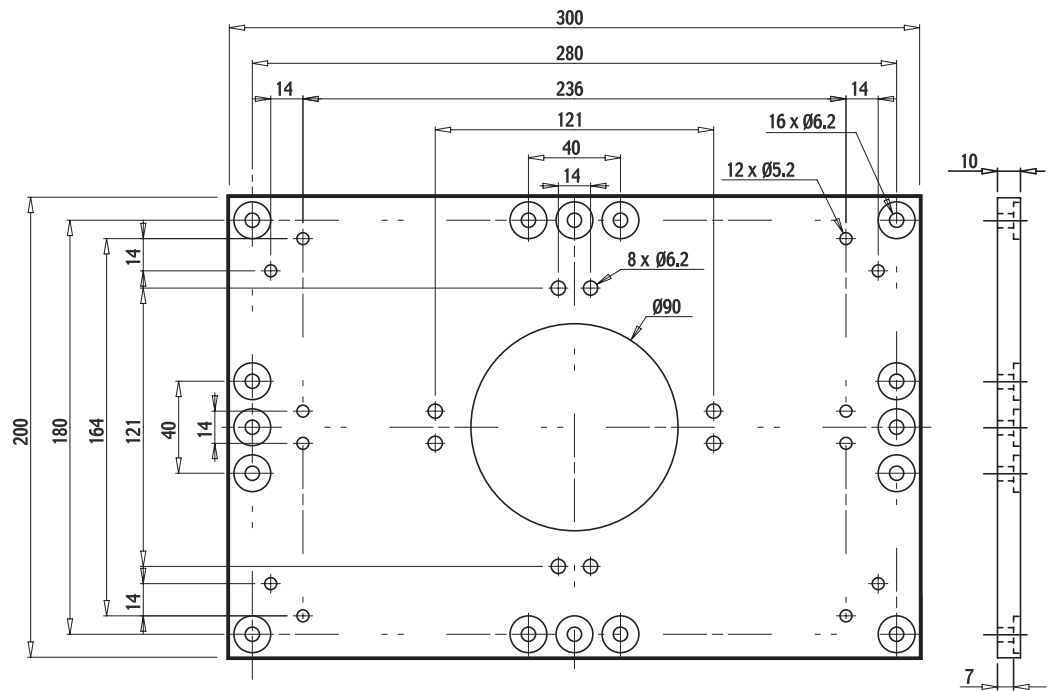
**RBP 150**  
294 g



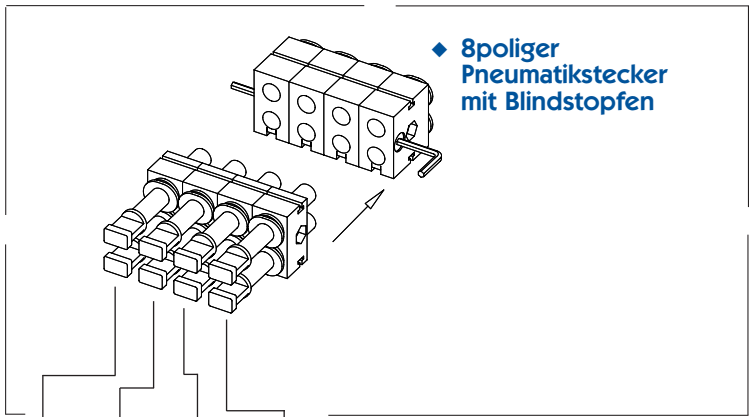
**RBP 200**  
521 g



**RBP 300**  
1.4 kg

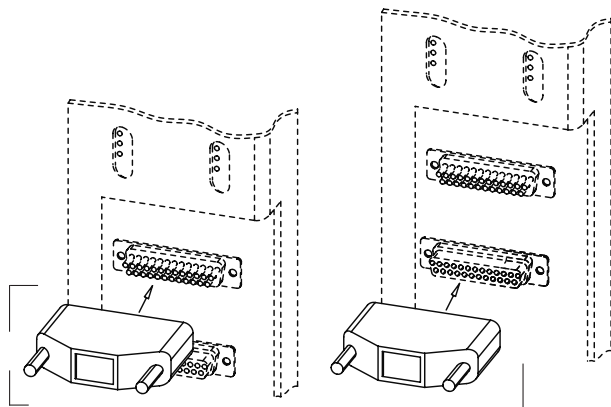
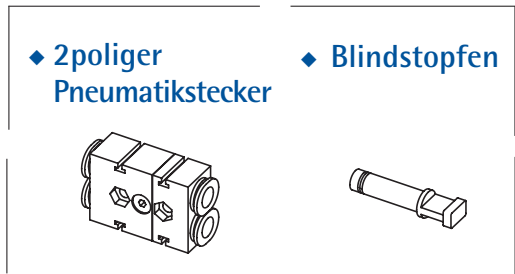
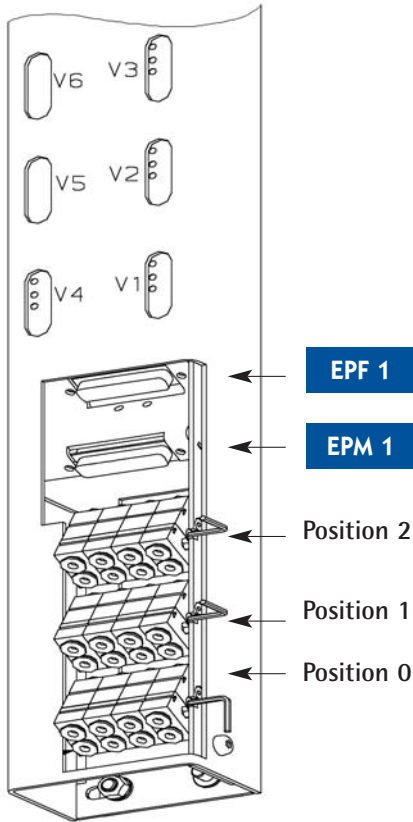


## Baureihe 3000



Leitungsdurchmesser in mm (*)				Position 0	Position 1	Position 2
4	4	4	4	PP 01	PP 11	PP 21
4	4	4	6	PP 02	PP 12	PP 22
4	4	6	6	PP 03	PP 13	PP 23
4	6	6	6	PP 04	PP 14	PP 24
6	6	6	6	PP 05	PP 15	PP 25
-	4	4	4	PP 06	X	X
-	-	4	4	PP 07	X	X

(\*) Leitungsdurchmesser = Außendurchmesser des Schlauches

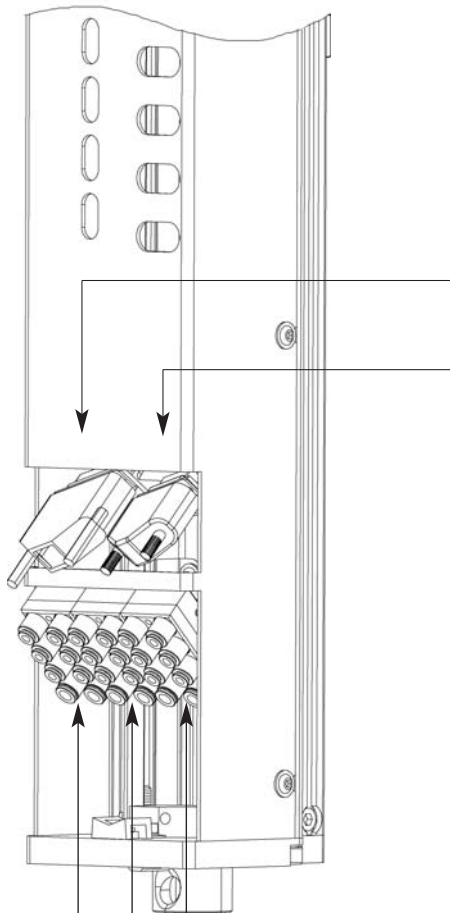


Leitungsdurchmesser in mm (*)	Code	
4	PP 42	SP 4
6	PP 62	SP 6
Verpackungseinheit	1	10

Code	
EPF 1	EPM 1



## Generation IV



EPM 1

EPM 2



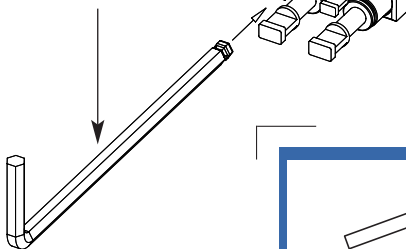
Position der Verdrehsicherung

	Anschlüsse								Code
	1	2	3	4	5	6	7	8	
Leitungs- durchmesser in mm	6	4	4	4	6	4	4	4	MP 1
	6	6	4	4	6	6	4	4	MP 2
	6	6	6	4	6	6	6	4	MP 3
	6	6	6	6	6	6	6	6	MP 4

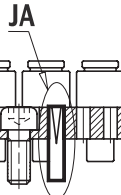
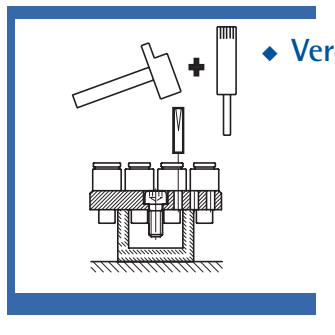
(\*) Leitungsdurchmesser = Außendurchmesser des Schlauches

◆ 8poliger Pneumatikstecker mit Blindstopfen

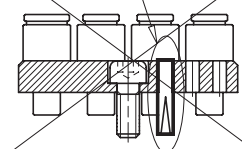
Sechskantschlüssel 5mm

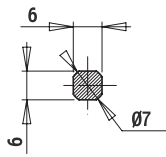
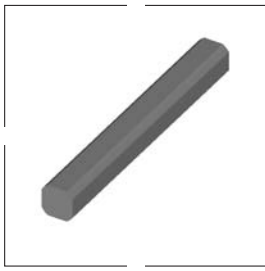


◆ Verdrehsicherheit

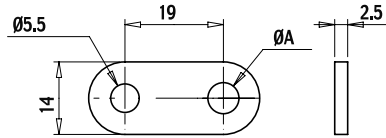
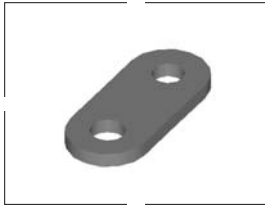


NEIN

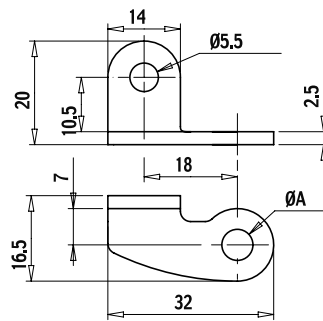
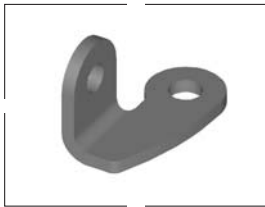




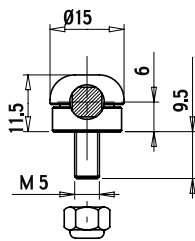
	L	Gewicht
<b>T 6</b>	1 m	91 g/m



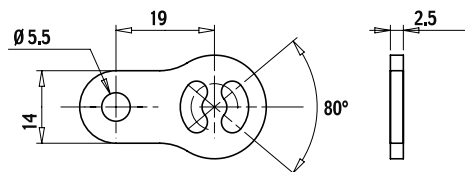
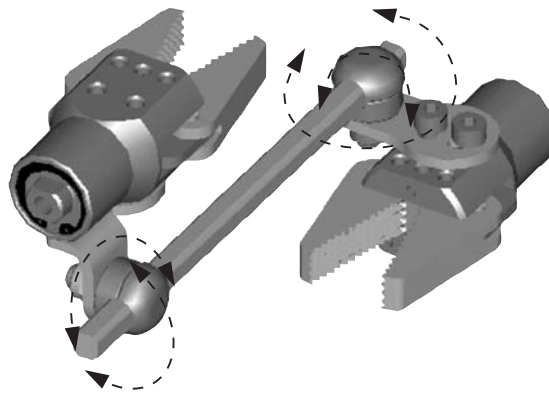
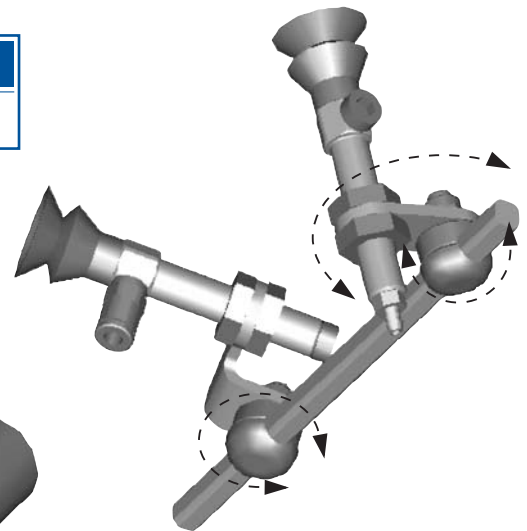
	ø A	Gewicht
<b>LT6 A</b>	6	7 g
<b>LT6 B</b>	8.5	7 g



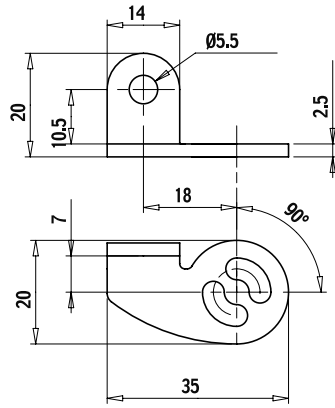
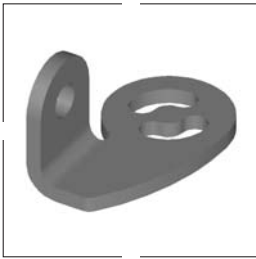
	ø A	Gewicht
<b>LT6 C</b>	6	11 g
<b>LT6 D</b>	8.5	10 g



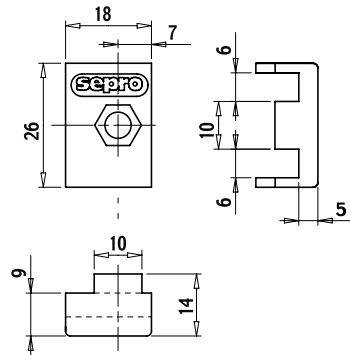
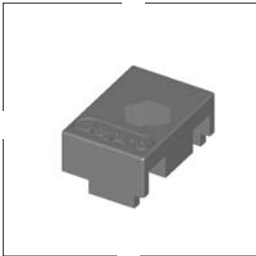
<b>LT6 E</b>	11 g
--------------	------



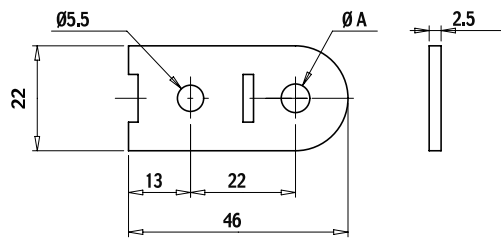
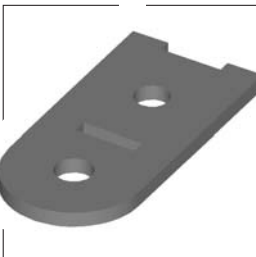
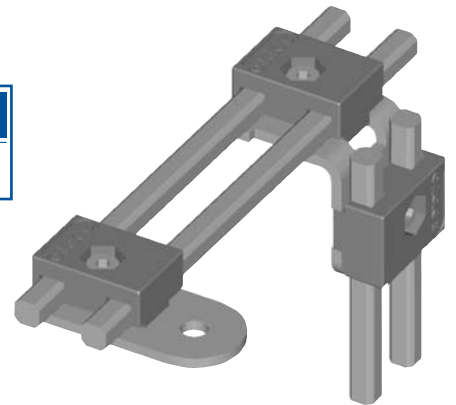
	für Zangen	Gewicht
<b>LT6 F</b>	ø 20	8 g



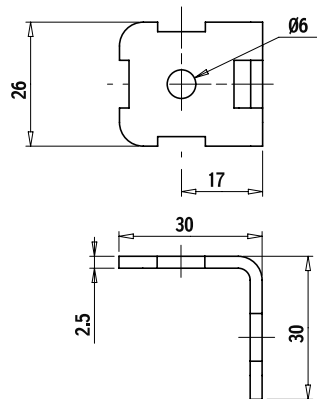
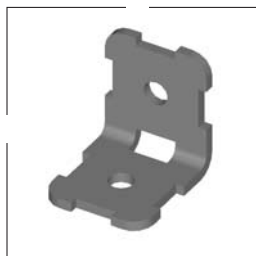
	für Zangen	Gewicht
<b>LT6 G</b>	Ø 20	13 g



<b>L2T6 A</b>
8 g

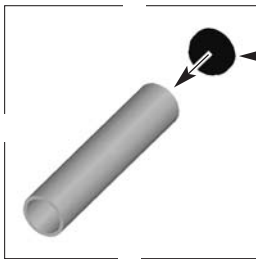


	Ø A	Gewicht
<b>L2T6 B</b>	6	17 g
<b>L2T6 C</b>	8.5	16 g



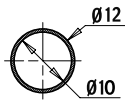
<b>L2T6 D</b>
23 g



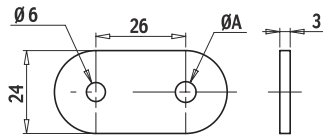
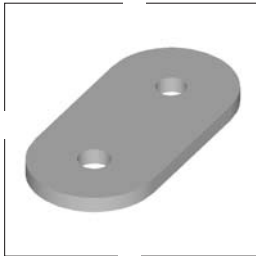


**ST 12**

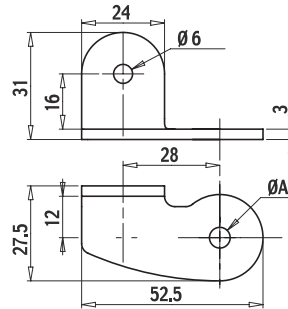
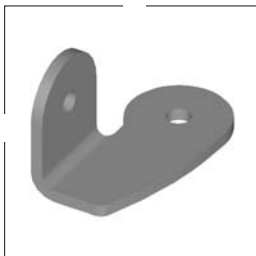
Verpackungseinheit x10



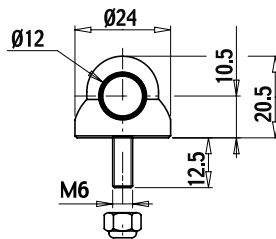
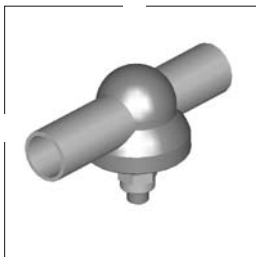
	L	Gewicht
<b>T 12</b>	1 m	255 g/m



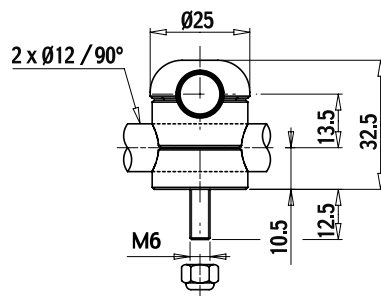
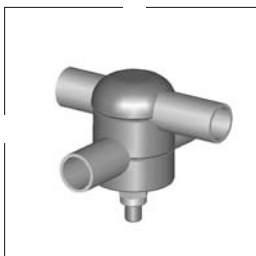
	ø A	Gewicht
<b>LT12 A</b>	6	24 g
<b>LT12 B</b>	8.5	23 g
<b>LT12 C</b>	10.5	22 g
<b>LT12 D</b>	12.5	21 g



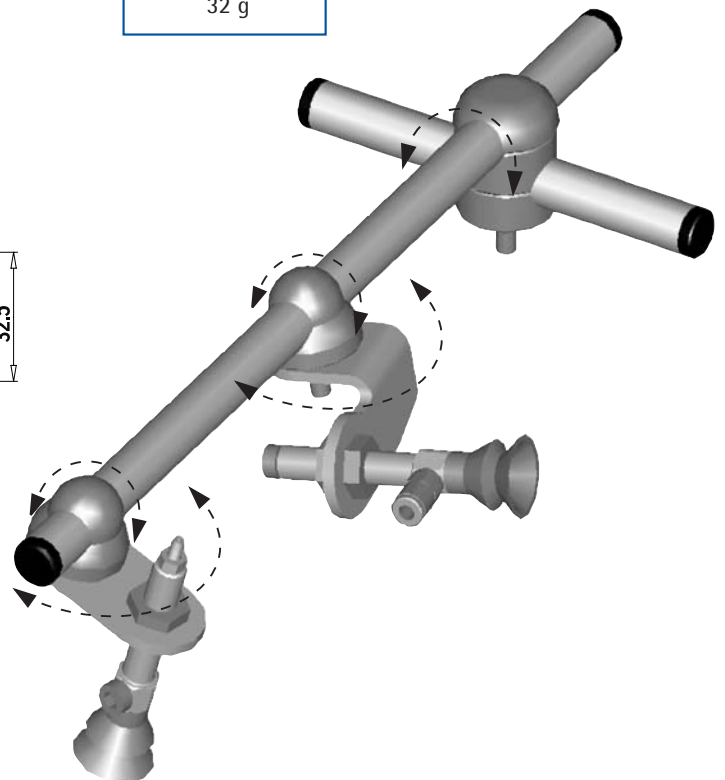
	ø A	Gewicht
<b>LT12 E</b>	6	39 g
<b>LT12 F</b>	8.5	38 g
<b>LT12 G</b>	10.5	37 g
<b>LT12 H</b>	12.5	36 g

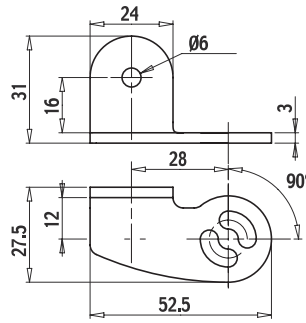
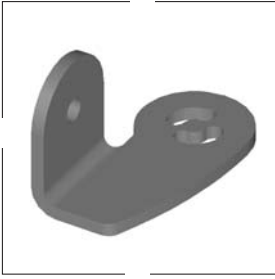


<b>LT12 I</b>
32 g

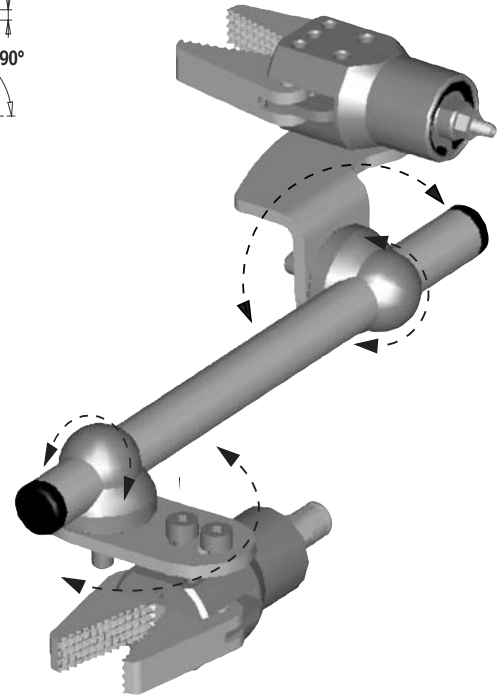
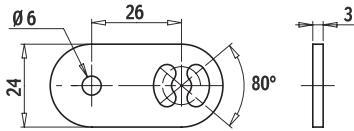
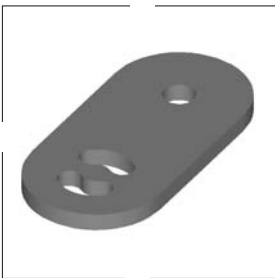


<b>L2T12 A</b>
73 g

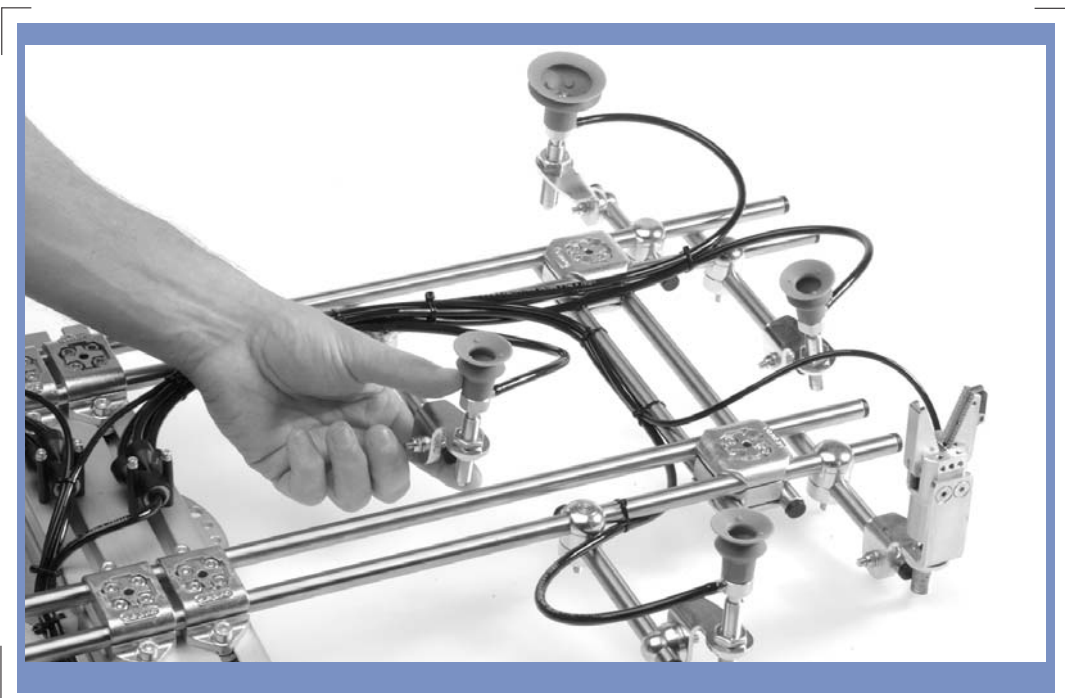




	für Zangen	Gewicht
<b>LT12 J</b>	$\varnothing$ 20	38 g
<b>LT12 K</b>	$\varnothing$ 25	37 g

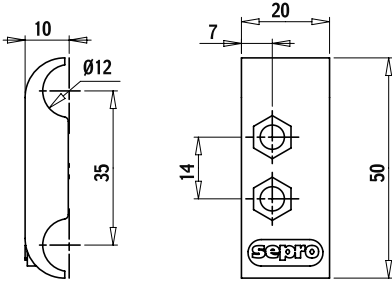
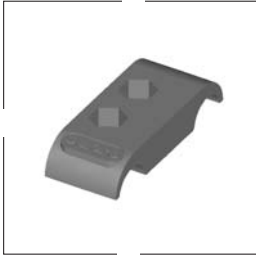


	für Zangen	Gewicht
<b>LT12 L</b>	$\varnothing$ 20	22 g
<b>LT12 M</b>	$\varnothing$ 25	21 g



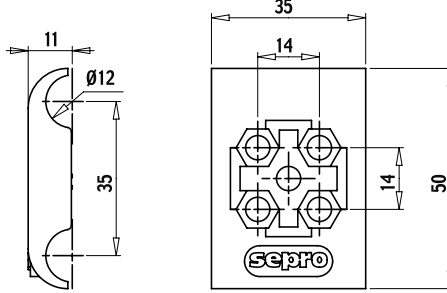
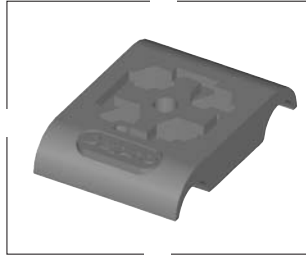
**L2T12 B**

16 g



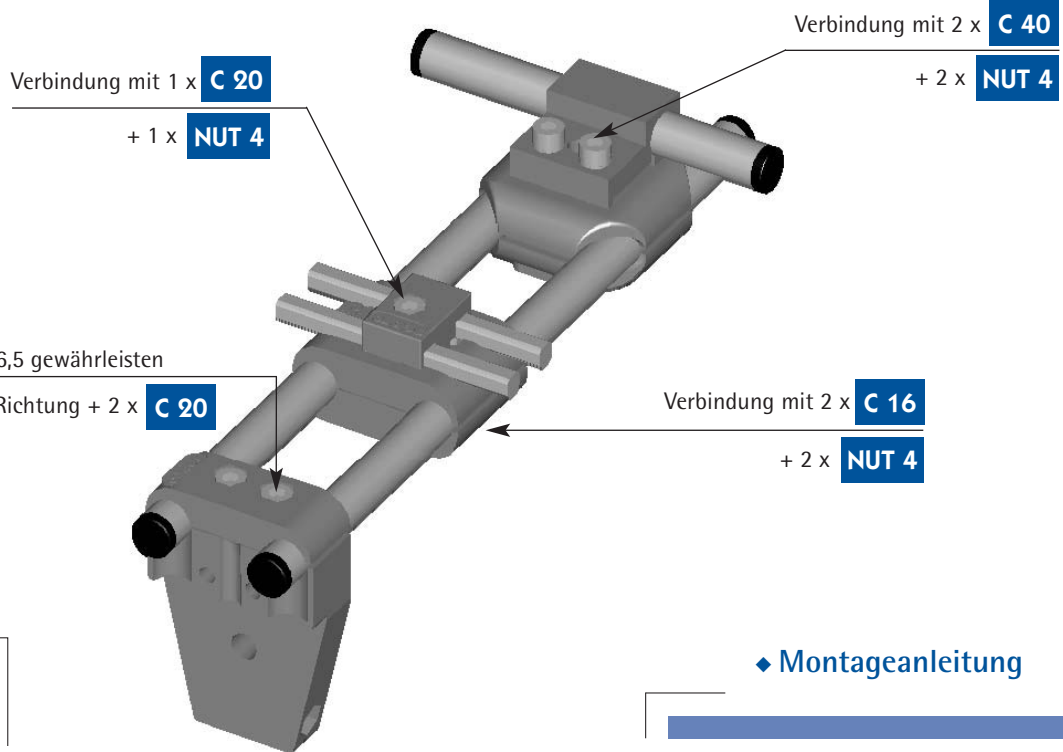
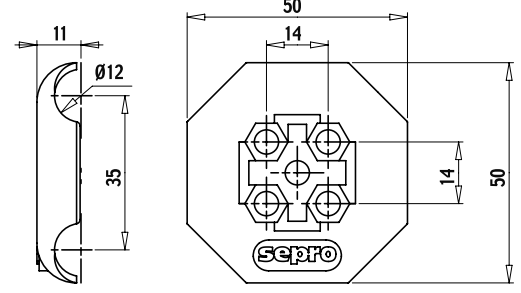
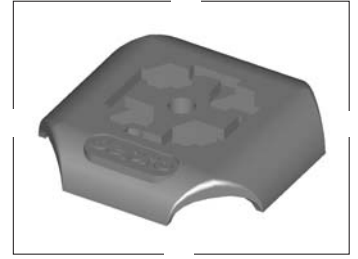
**L2T12 C**

26 g



**L2T12 D**

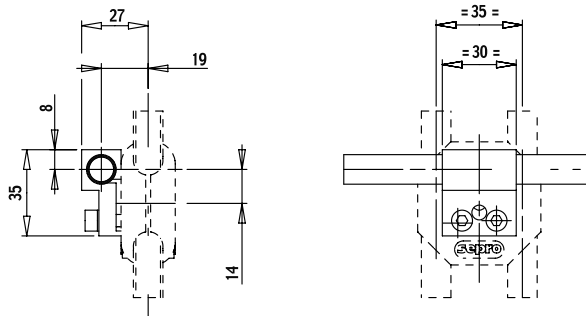
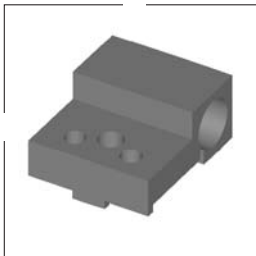
27 g



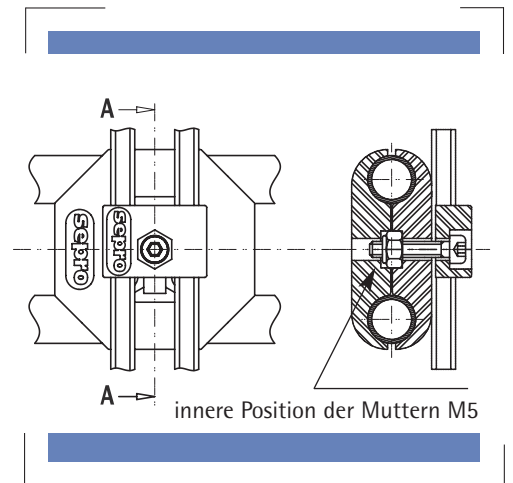
2 Innengewinde M5 x 16,5 gewährleisten  
eine Montage in dieser Richtung + 2 x **C 20**

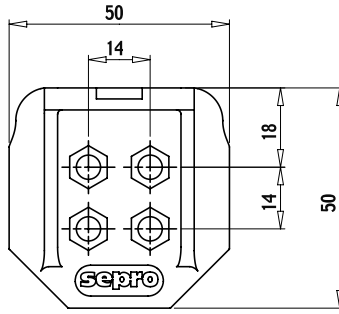
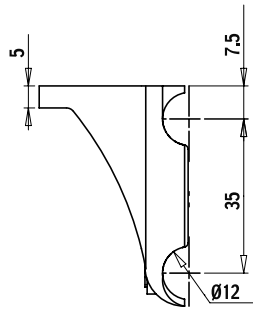
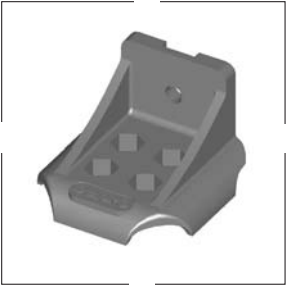
**L1T12**

21 g

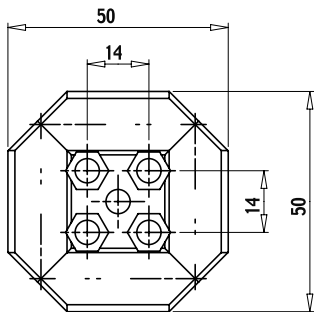
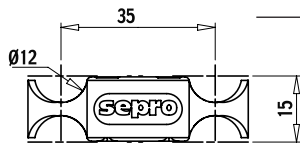
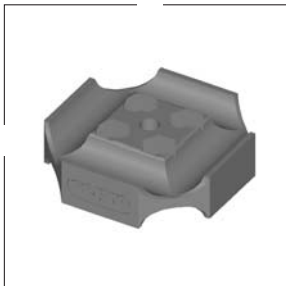


## ◆ Montageanleitung

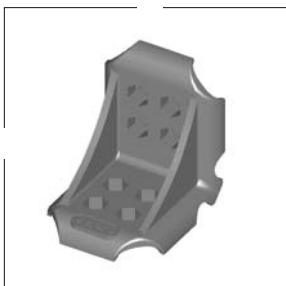




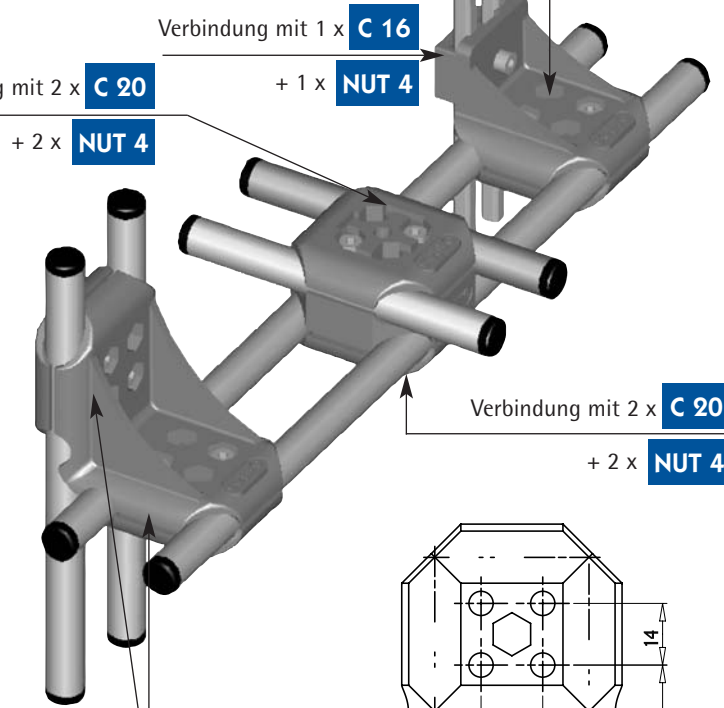
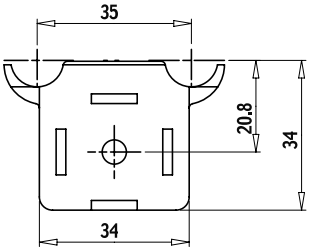
**L2T12 E**  
44 g



**L2T12 F**  
37 g



**L2T12 G**  
69 g



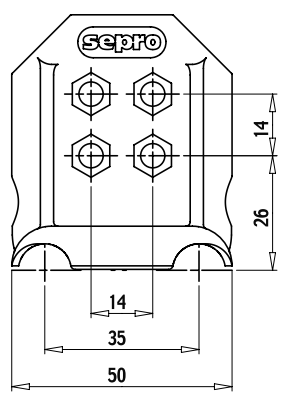
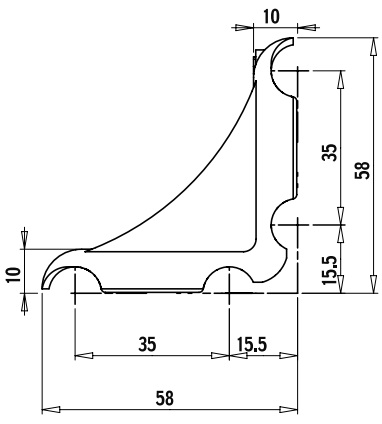
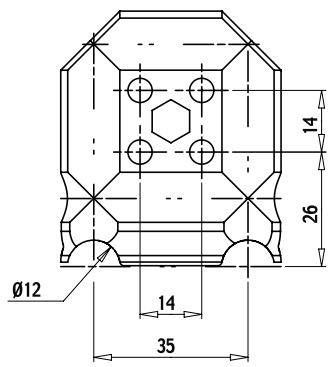
Verbindung mit 2 x **C 16**  
+ 2 x **NUT 4**

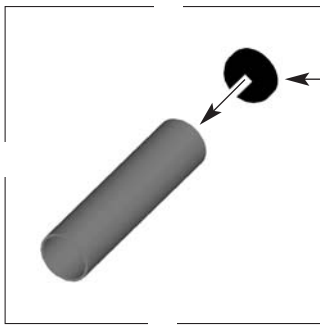
Verbindung mit 1 x **C 16**  
+ 1 x **NUT 4**

Verbindung mit 2 x **C 20**  
+ 2 x **NUT 4**

Verbindung mit 2 x **C 20**  
+ 2 x **NUT 4**

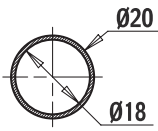
Verbindung mit 2 x **C 16**  
+ 2 x **NUT 4**



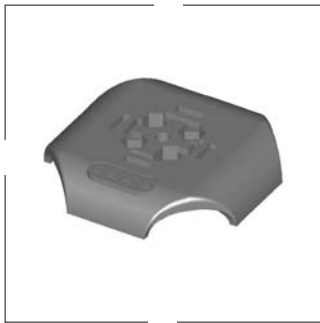


**ST 20**

Verpackungseinheit x10

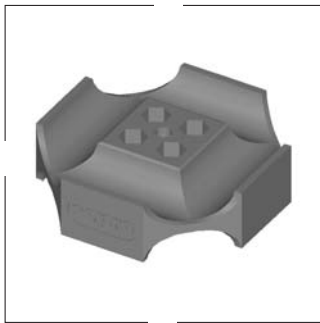


	L	Gewicht
<b>T 20</b>	2 m	425 g/m



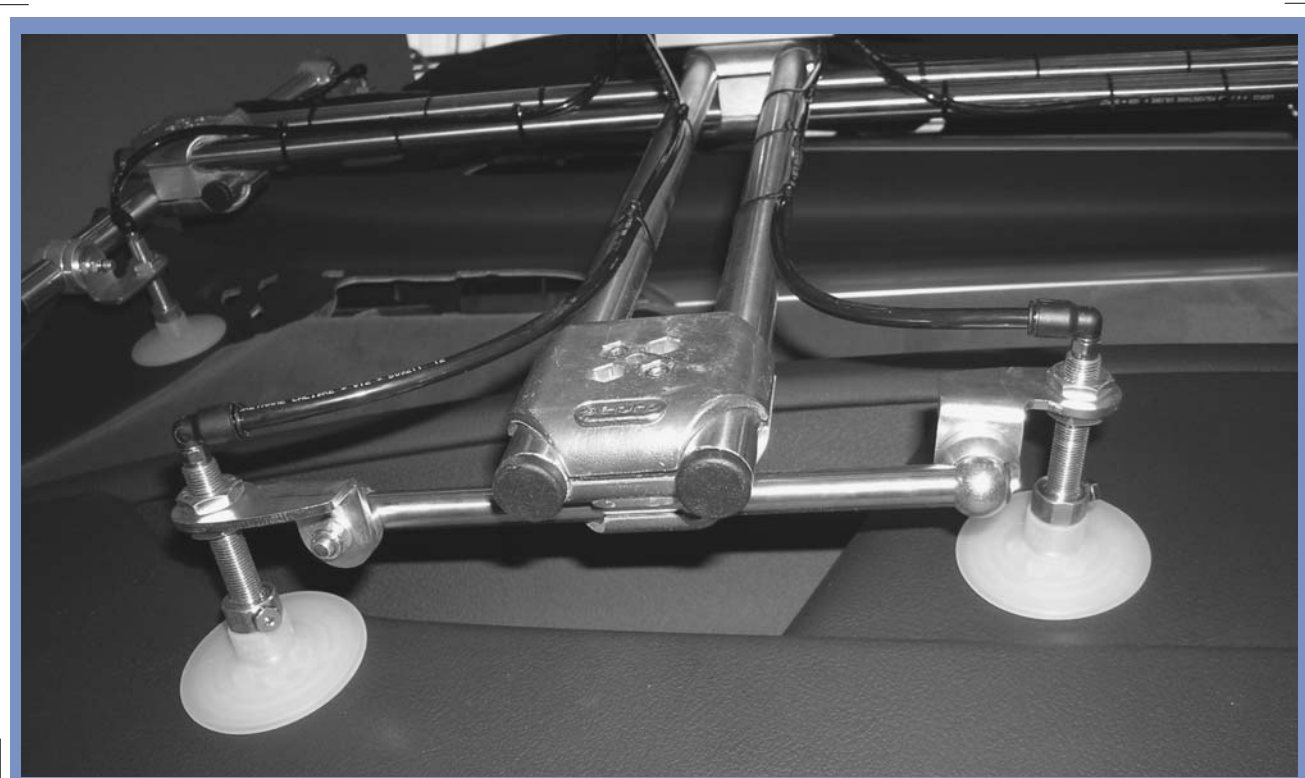
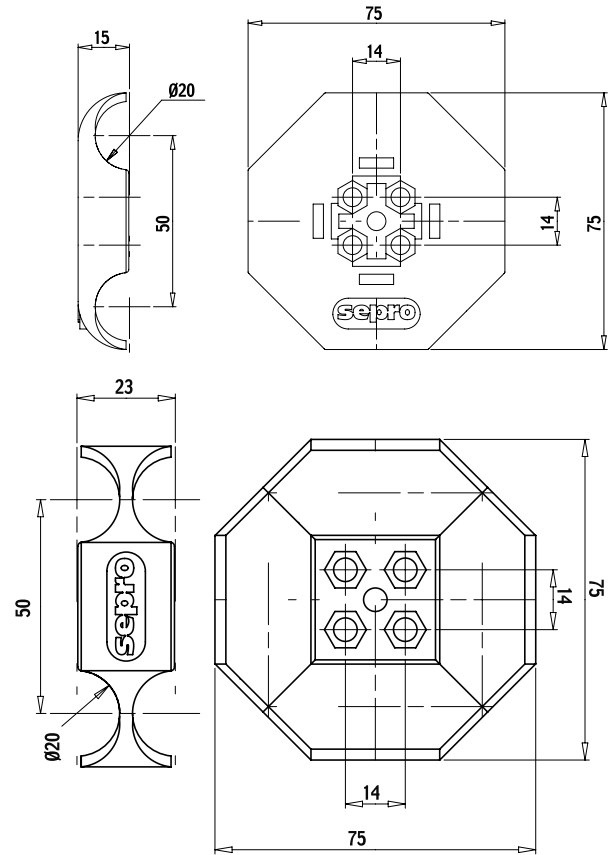
**L2T20 A**

91 g

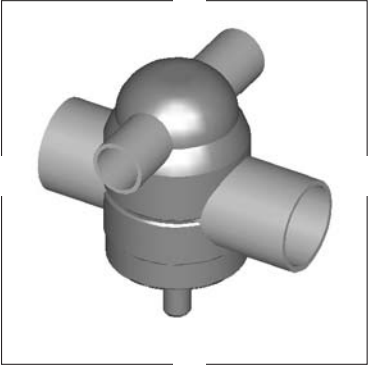


**L2T20 B**

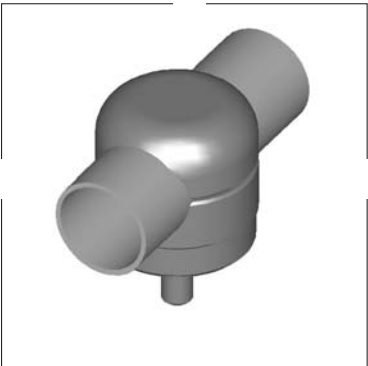
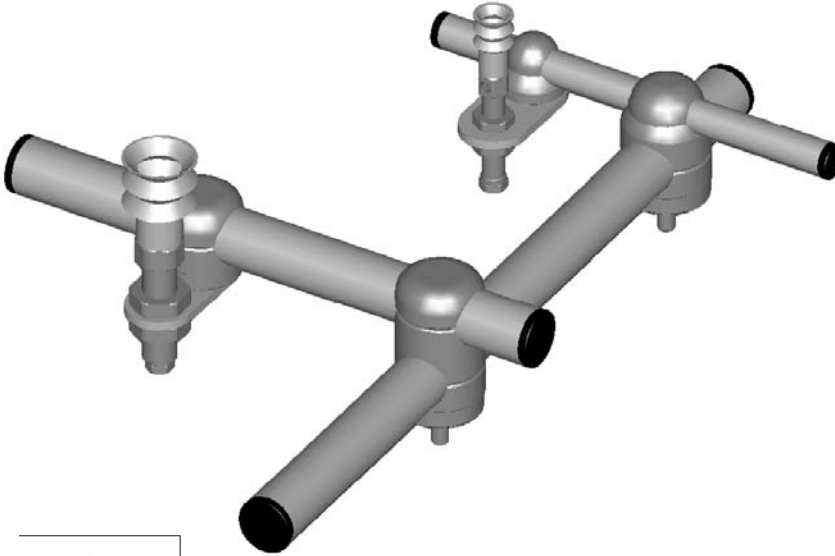
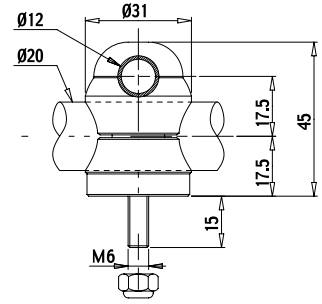
122 g



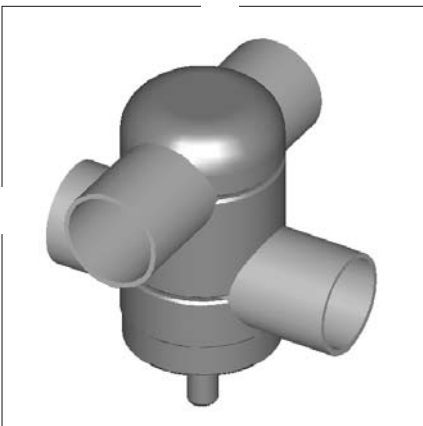
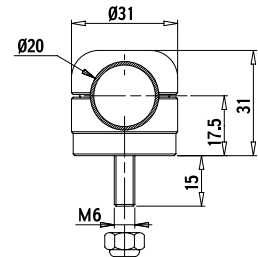




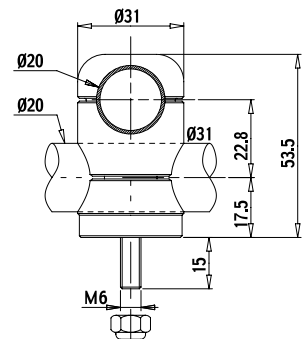
**LT12 20**  
125 g

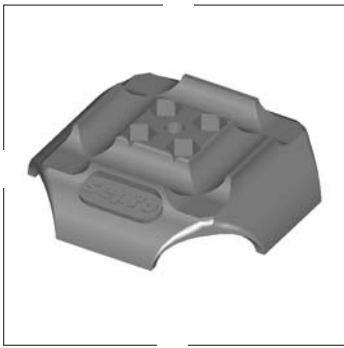


**LT20**  
92 g

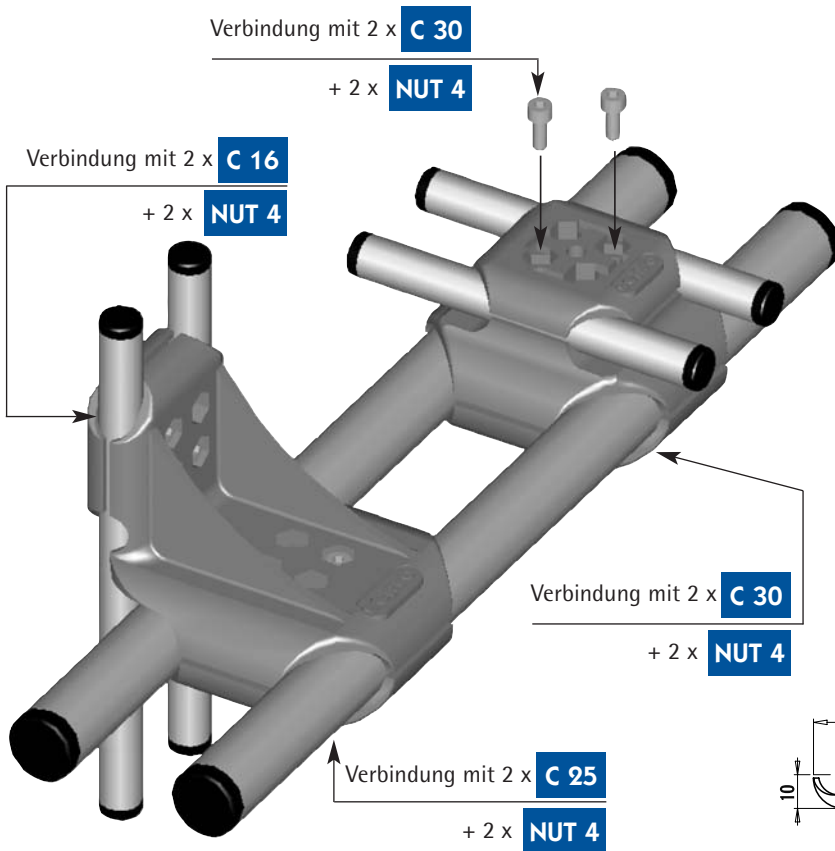
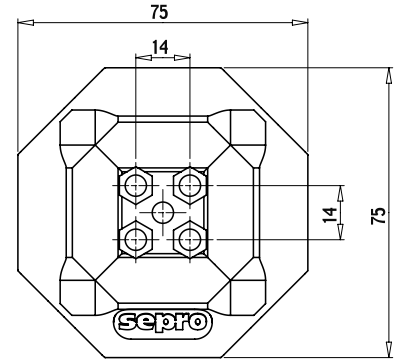
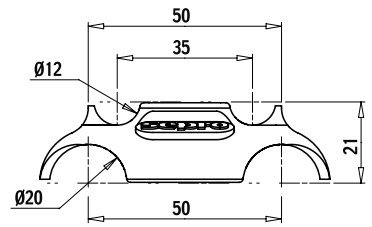


**L2T20**  
150 g

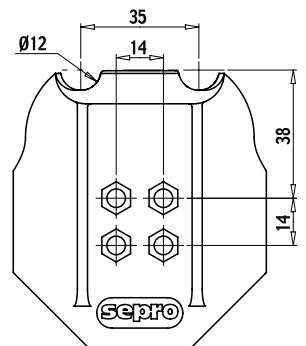
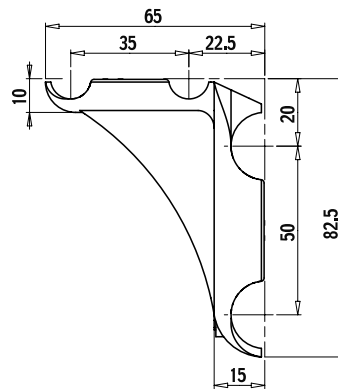
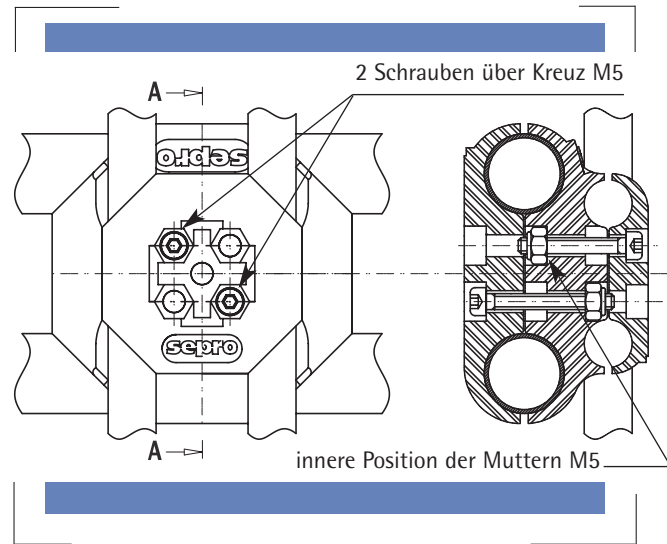




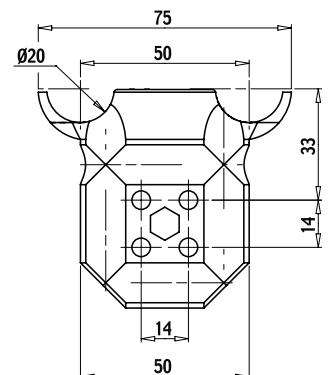
**LT12 20 A**  
100 g

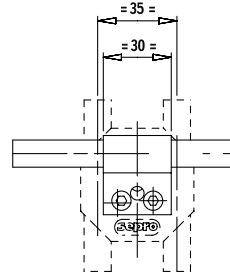
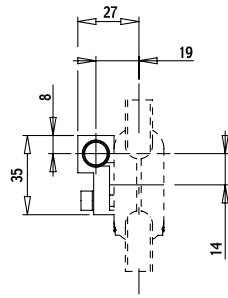
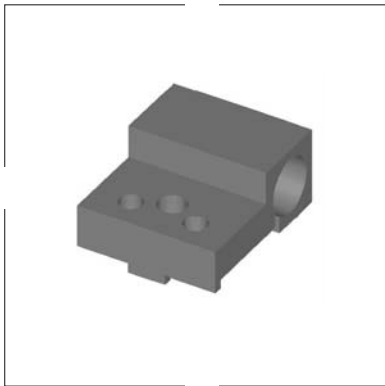


## Montageanleitung

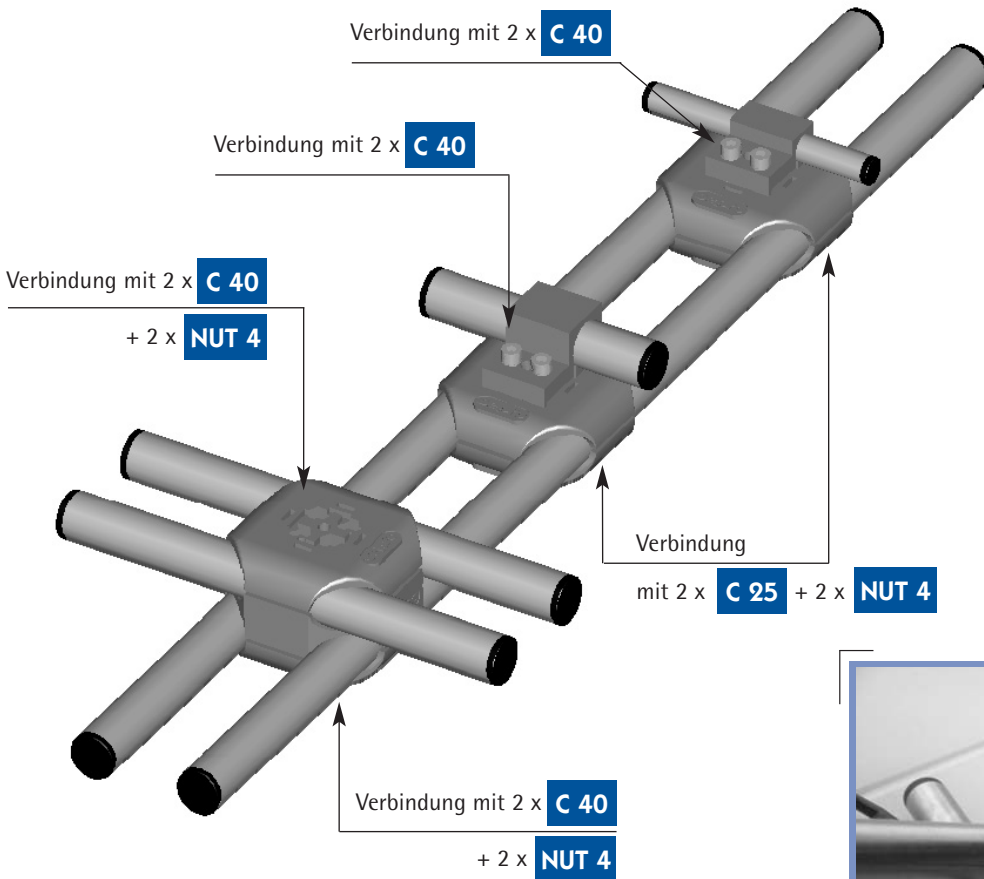


**LT12 20 B**  
143 g

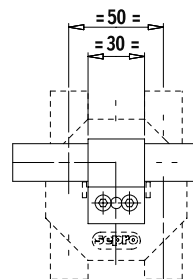
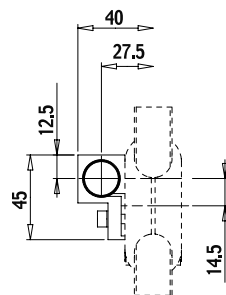
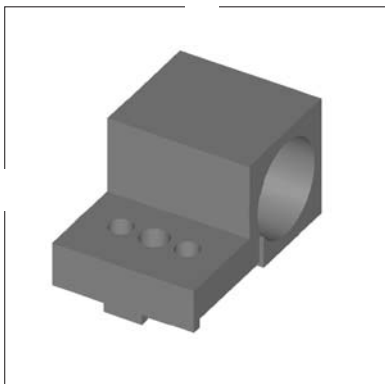
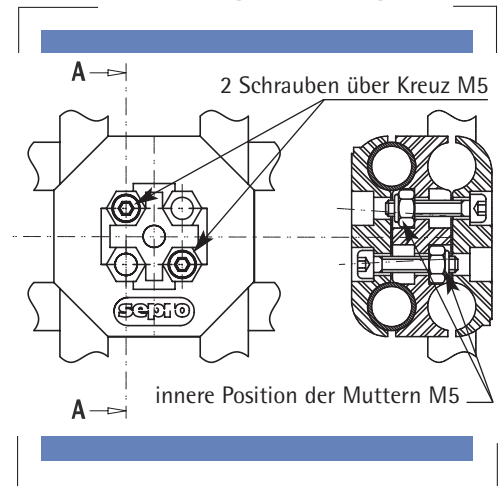




**L1T12**  
21 g



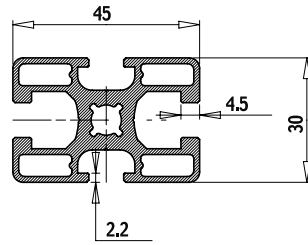
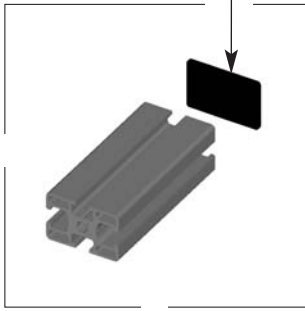
### ◆ Montageanleitung



**L1T20**  
35 g

## SP 30

Verpackungseinheit x10

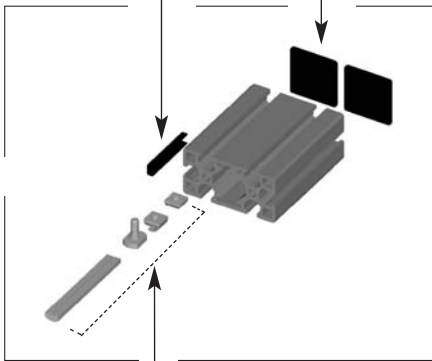


	L	Gewicht
<b>P 30</b>	2 m	1,3 kg/m

## GHP

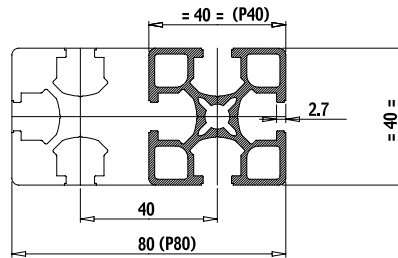
L = 2 m

Verpackungseinheit x10



siehe Seite 38

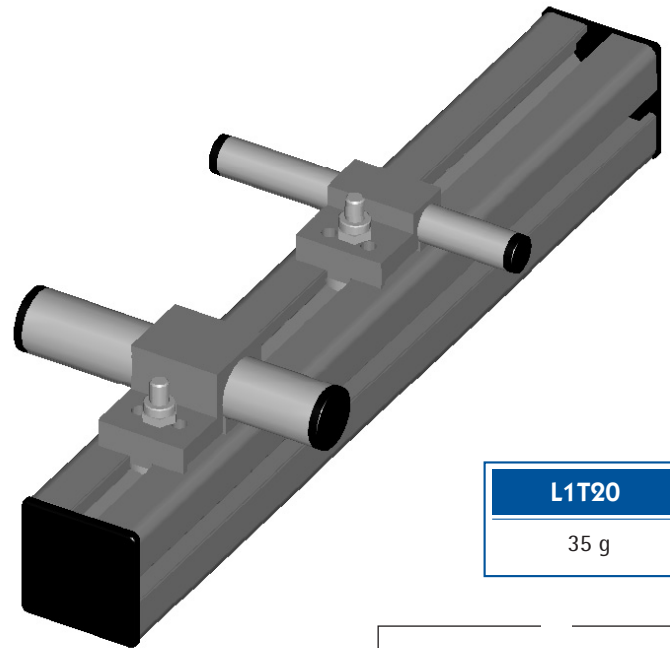
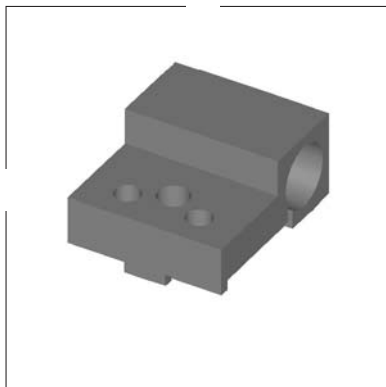
## SP 40



	L	Gewicht
<b>P 40</b>	2 m	1,3 kg/m
<b>P 80</b>	2 m	3 kg/m

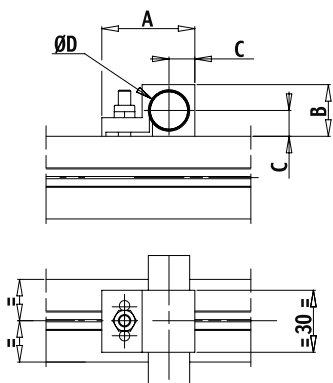
## L1T12

21 g

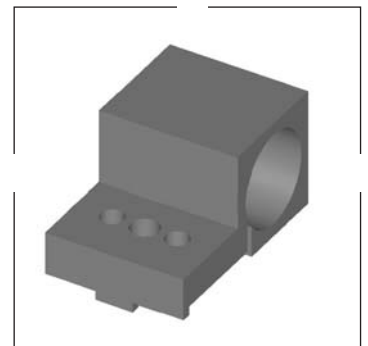


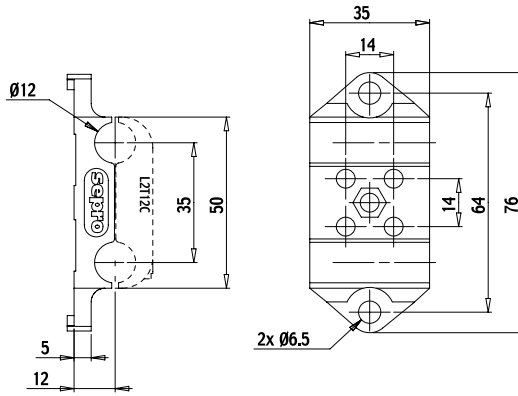
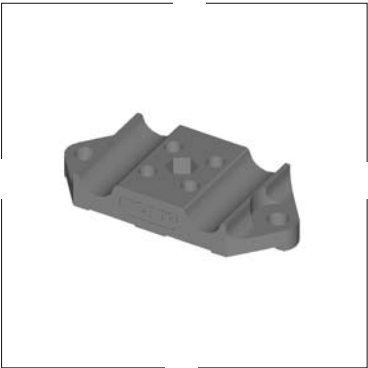
## L1T20

35 g

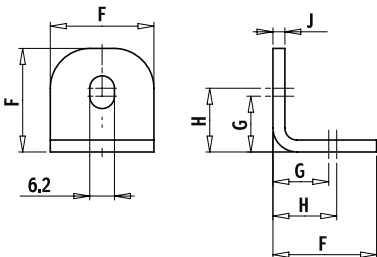
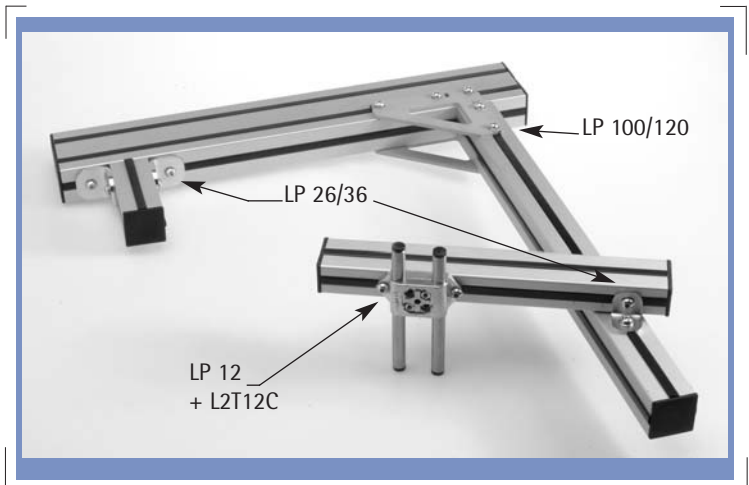
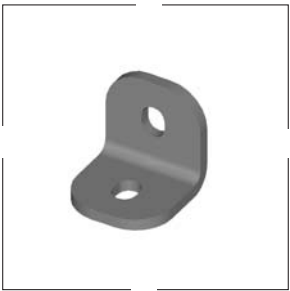


	A	B	C	øD	Gewicht
<b>L1T12</b>	35	16	8	12	21 g
<b>L1T20</b>	45	25	12,5	20	35 g

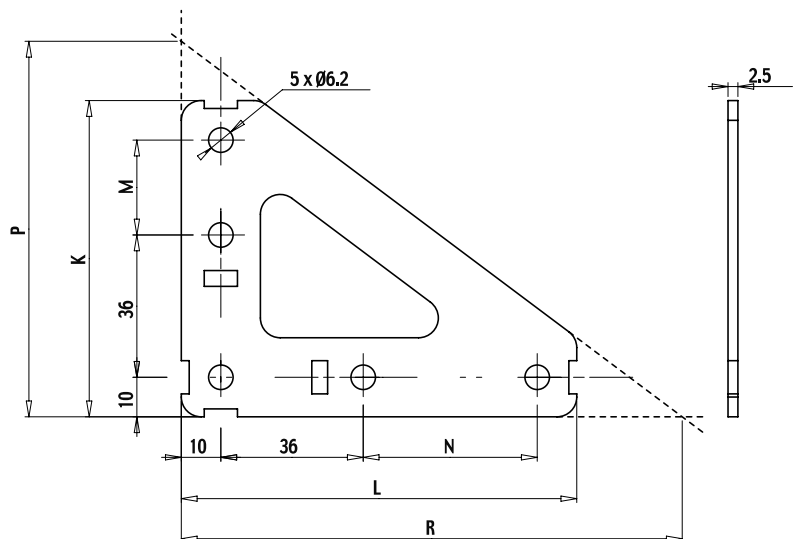
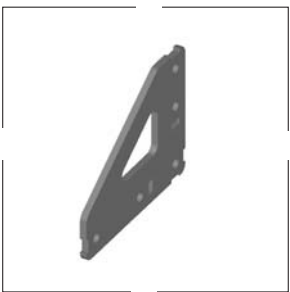




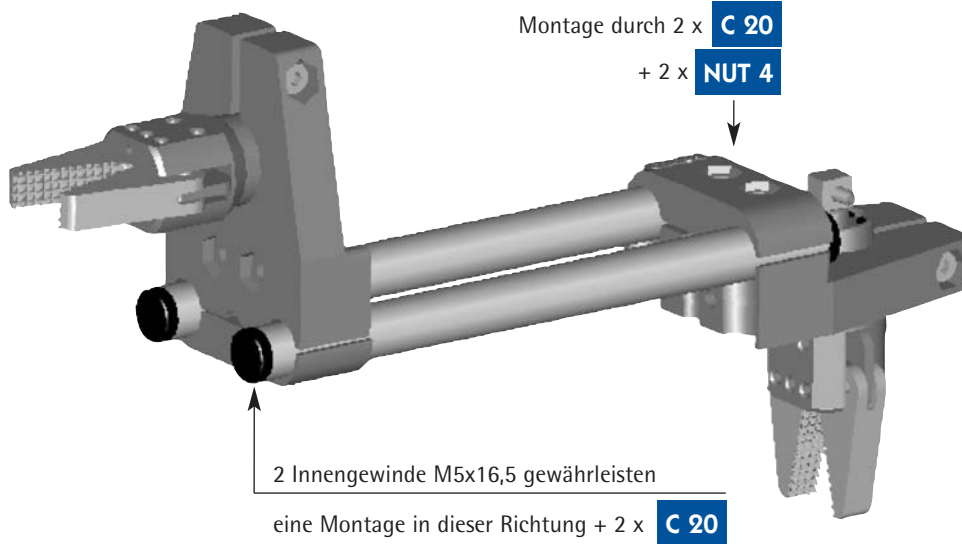
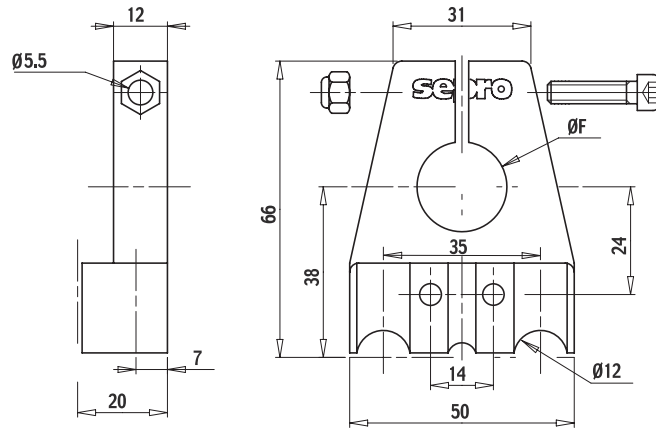
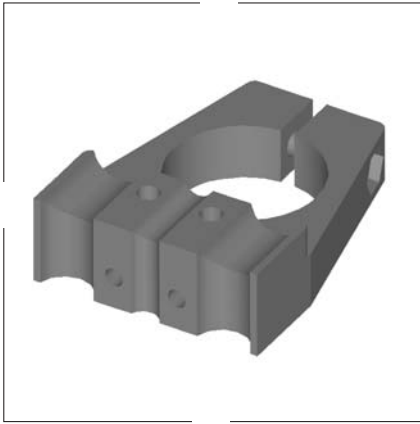
<b>LP 12</b>
43 g



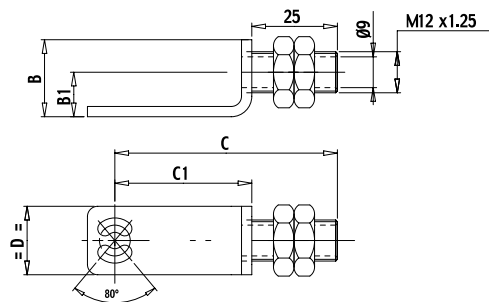
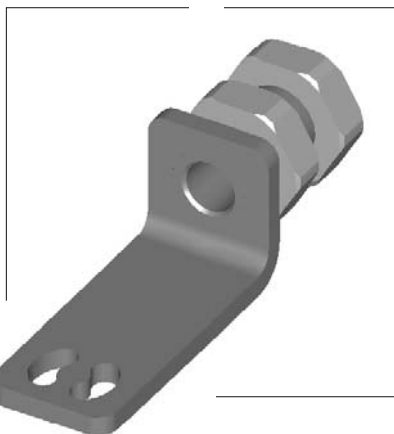
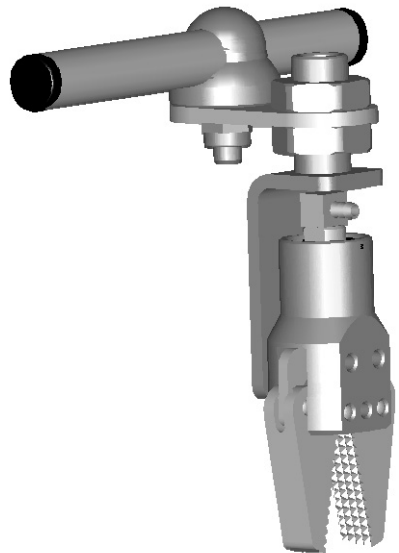
	F	G	H	J	Gewicht
<b>LP 26</b>	26	14	16	3	25 g
<b>LP 36</b>	36	19	23	4	65 g



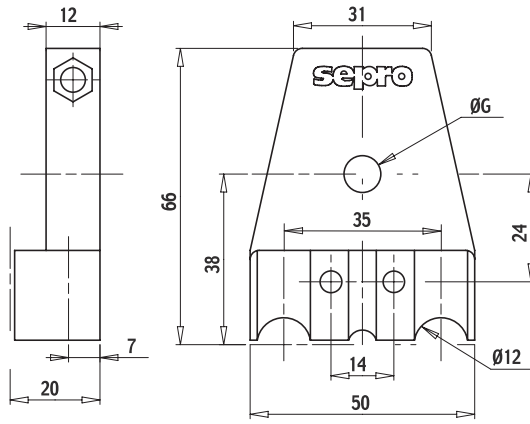
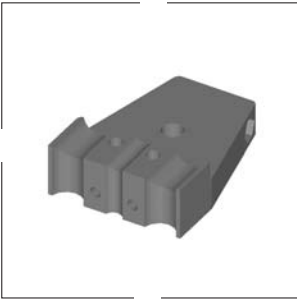
	K	L	M	N	P	R	Gewicht
<b>LP 100</b>	80	100	24	44	95	127	82 g
<b>LP 120</b>	100	120	44	64	116	145	106 g



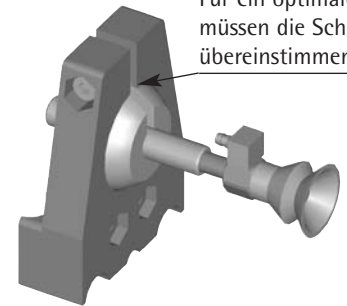
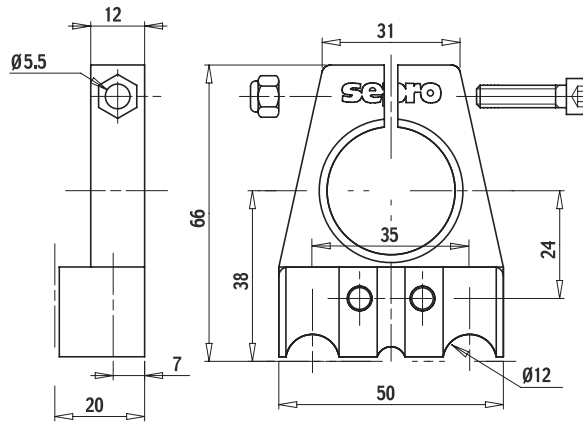
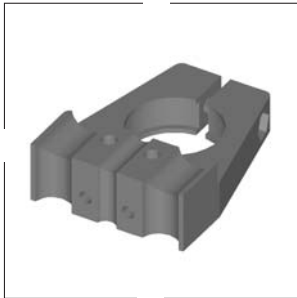
	Ø F	Gewicht
<b>SG 20</b>	20	81 g
<b>SG 25</b>	25	76 g



	B	B1	C	C1	D	für Zangen	Gewicht
<b>SG 20 L</b>	22.5	13	65	40	20	Ø 20	36 g
<b>SG 25 L</b>	25	16	77	52	25	Ø 25	66 g

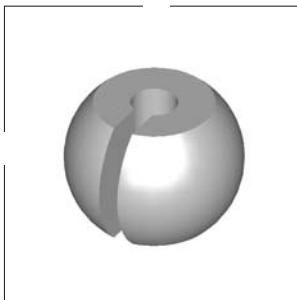


	Ø G	Gewicht
<b>SV 8</b>	8.2	91 g
<b>SV 10</b>	10.2	90 g
<b>SV 12</b>	12.2	89 g

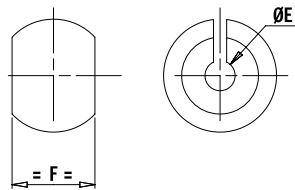


Für ein optimales Anziehen, müssen die Schlitze übereinstimmen

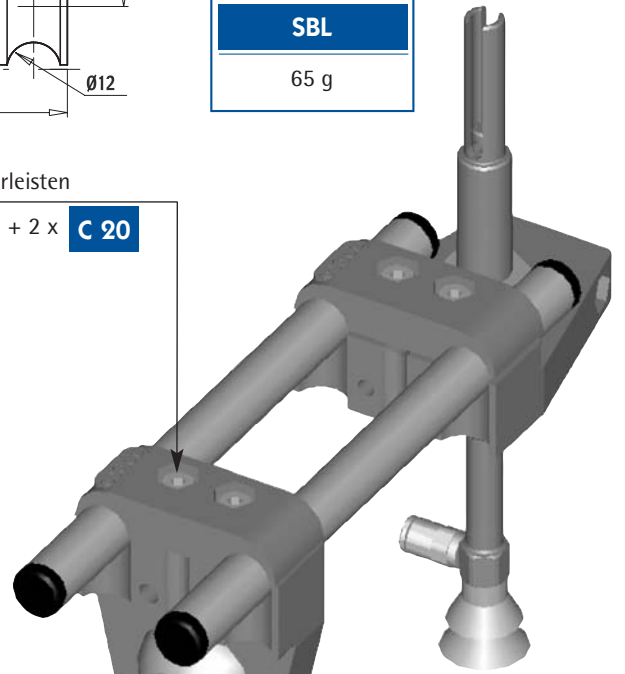
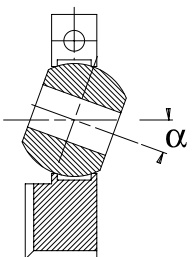
<b>SBL</b>
65 g



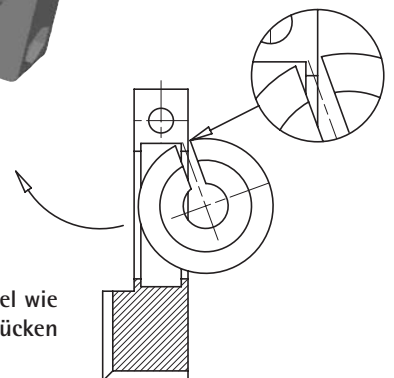
2 Innengewinde M5x16,5 gewährleisten eine Montage in dieser Richtung + 2 x **C 20**

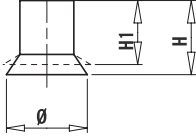
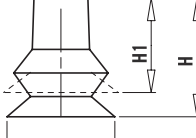
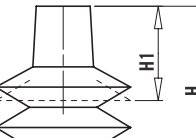


	Ø E	F	α	Gewicht
<b>BL 8</b>	8	22	20°	13 g
<b>BL 10</b>	10	22	20°	12 g
<b>BL 12</b>	12	22	20°	11 g
<b>BL 20</b>	20	22	20°	6 g
<b>BL 25</b>	25	16	10°	2 g



Gelenkkugel wie gezeigt eindrücken



	ø (mm)	Ansatzstück	Silikon	Neopren	H*	H1**
	10	4	<b>VS 10 S</b>	<b>VS 10 N</b>	10,5	9
	15	4	<b>VS 15 S</b>	<b>VS 15 N</b>	11	8,75
	20	4	<b>VS 20 S</b>	<b>VS 20 N</b>	11,5	8,5
	25	4	<b>VS 25 S</b>	<b>VS 25 N</b>	12	9
	26	8	<b>VS 26 S</b>	<b>VS 26 N</b>	19,5	17
	35	8	<b>VS 35 S</b>	<b>VS 35 N</b>	20	17
	52	8	<b>VS 52 S</b>	<b>VS 52 N</b>	22	17,5
	60	8	<b>VS 60 S</b>	<b>VS 60 N</b>	22	17,5
	75	12	<b>VS 75 S</b>	<b>VS 75 N</b>	32	27,5
	95	12	<b>VS 95 S</b>	<b>VS 95 N</b>	38	26
	5.5	4	<b>VD 5 S</b>	<b>VD 5 N</b>	11	9
	11	4	<b>VD 11 S</b>	<b>VD 11 N</b>	16	10,5
	16	4	<b>VD 16 S</b>	<b>VD 16 N</b>	19	10,5
	19	4	<b>VD 19 S</b>	<b>VD 19 N</b>	16	11
	25	4	<b>VD 25 S</b>	<b>VD 25 N</b>	23	11
	26	8	<b>VD 26 S</b>	<b>VD 26 N</b>	24,5	18,5
	33	8	<b>VD 33 S</b>	<b>VD 33 N</b>	27,5	16,5
	53	8	<b>VD 53 S</b>	<b>VD 53 N</b>	34	19
	63	8	<b>VD 63 S</b>	<b>VD 63 N</b>	34	19
	6	4	<b>VT 6 S</b>	<b>VT 6 N</b>	13,2	10,2
	7	4	<b>VT 7 S</b>	<b>VT 7 N</b>	14	10
	9	4	<b>VT 9 S</b>	<b>VT 9 N</b>	15	12
	12	4	<b>VT 12 S</b>	<b>VT 12 N</b>	21	14
	14	4	<b>VT 14 S</b>	<b>VT 14 N</b>	23	13
	18	4	<b>VT 18 S</b>	<b>VT 18 N</b>	23	13
	25	4	<b>VT 25 S</b>	<b>VT 25 N</b>	34	14
	26	8	<b>VT 26 S</b>	<b>VT 26 N</b>	33	21
	42	8	<b>VT 42 S</b>	<b>VT 42 N</b>	46	24
	62	8	<b>VT 62 S</b>	<b>VT 62 N</b>	55	24

\* Einbauhöhe    \*\* Höhe bei Belastung



Max. Einsatztemperatur :

Silikon : 220 °C

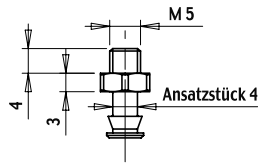
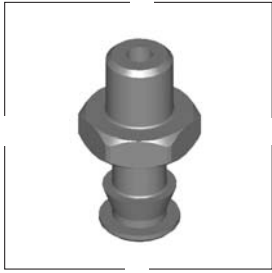
Neopren : 80 °C

Gummi : 70 °C

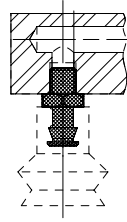


	ø (mm)	Ansatzstück	Silikon	H*	H1**
	18	4	<b>VM 18</b>	36	18
	25	4	<b>VM 25</b>	45	18
	32	8	<b>VM 32</b>	65	31
<b>für unebene Oberflächen</b> 	26	8	<b>VJ 26</b>	26,5	20,5
	33	8	<b>VJ 33</b>	29,5	18,5
	53	8	<b>VJ 53</b>	39	24
<b>für Folien</b> 			Kautschuk		
	15	4	<b>VL 15</b>	9,8	9
	20	4	<b>VL 20</b>	10,3	9
	25	4	<b>VL 25</b>	10,8	9

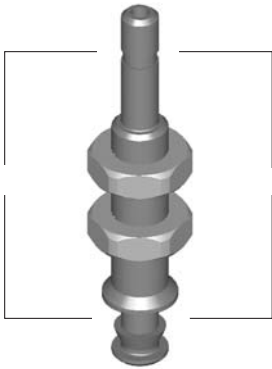
\* Einbauhöhe    \*\* Höhe bei Belastung



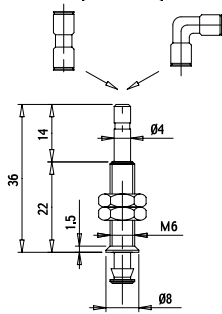
Montagebeispiel



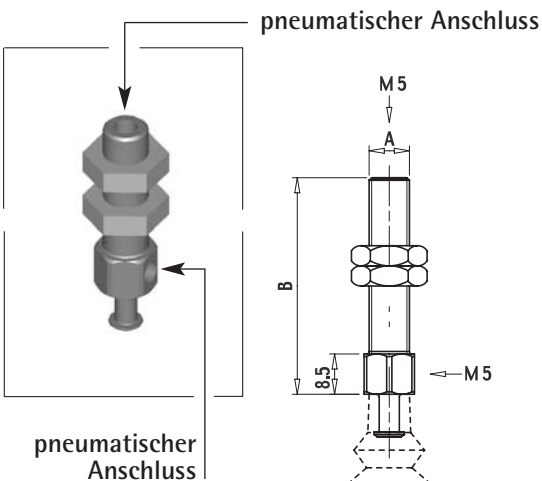
**FN 4 A**  
2 g



pneumatische Anschlüsse  
siehe Seite 40 (separat bestellen)

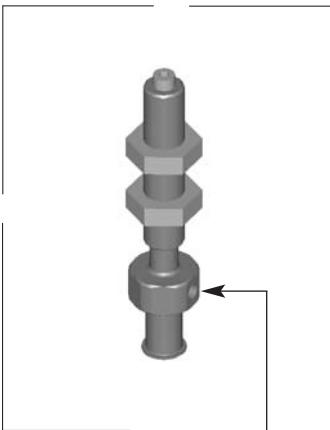


**FN 4 B**  
9 g

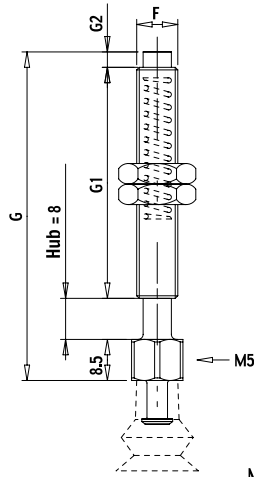


	FN 4 C	FN 4 D	FN 8 A	FN 8 B	FN 12 A	FN 12 B
A	M8x1	M8x1	M10x1	M10x1	M12x1,25	M12x1,25
B	33	43	38,5	53,5	48,5	68,5
Gewicht	18 g	21 g	48 g	56 g	75 g	91 g
Ansatzstück	4	4	8	8	12	12

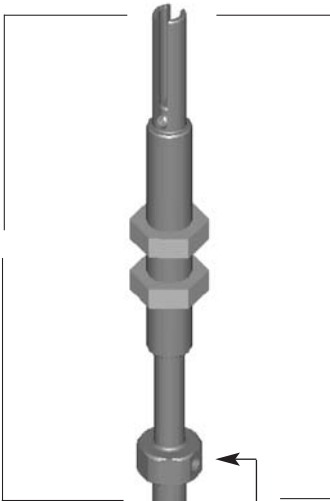
mit einem M5 Blindstopfen



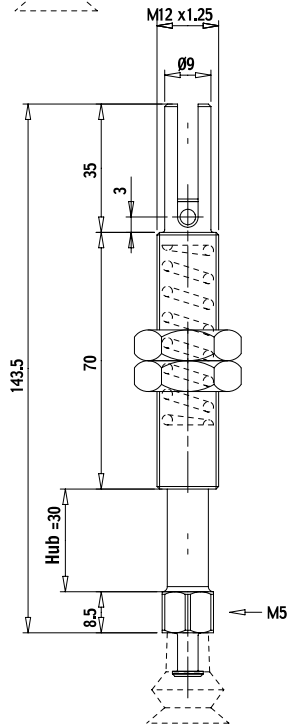
pneumatischer Anschluss



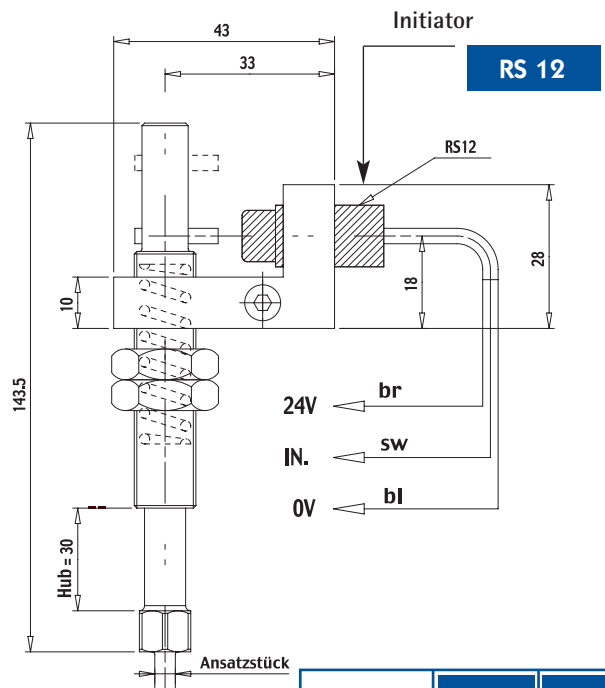
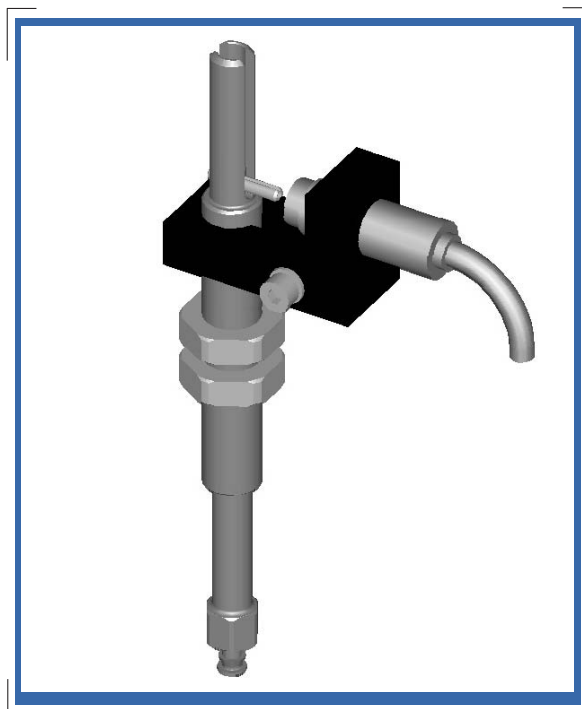
	SN 4	SN 8	SN 12
F	M8 x 1	M10 x 1	M12 x 1,25
G	64,5	64,5	70,5
G1	45	45	50
G2	3	3	4
Gewicht	30 g	60 g	85 g
Ansatzstück	4	8	12
Federkraft	weich	weich	hart



pneumatischer Anschluss



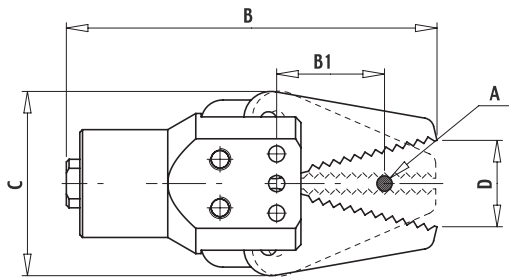
	SN 4 L	SN 8 L
Gewicht	88 g	108 g
Ansatzstück	4	8
Federkraft	weich	hart



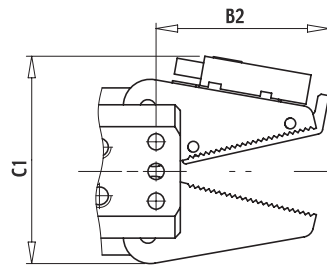
	DU 4	DU 8
Gewicht	160 g	180 g
Ansatzstück	4	8
Federkraft	weich	hart

Bausatz komplett mit Sensor

ohne Abfrage



mit Abfrage

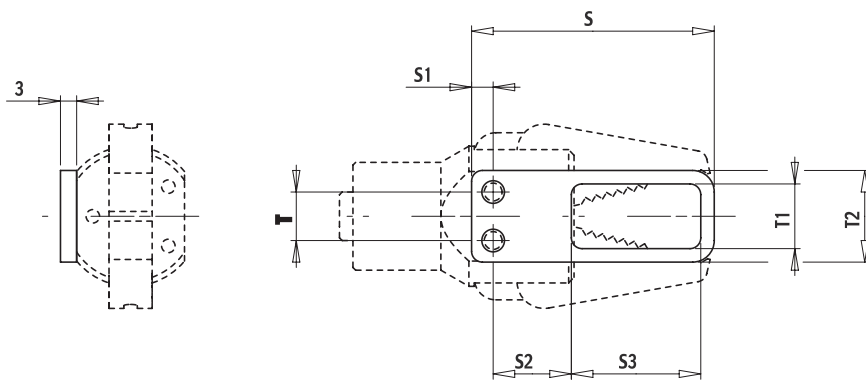


	B	B1	B2	C	C1	D
Zange $\varnothing$ 20	69	20	32	34	39	15
Zange $\varnothing$ 25	91	27	38	40	46	28

Kraft bei 6 Bar an A
40 N
56 N

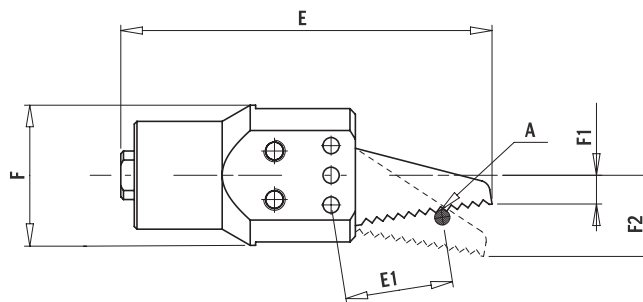
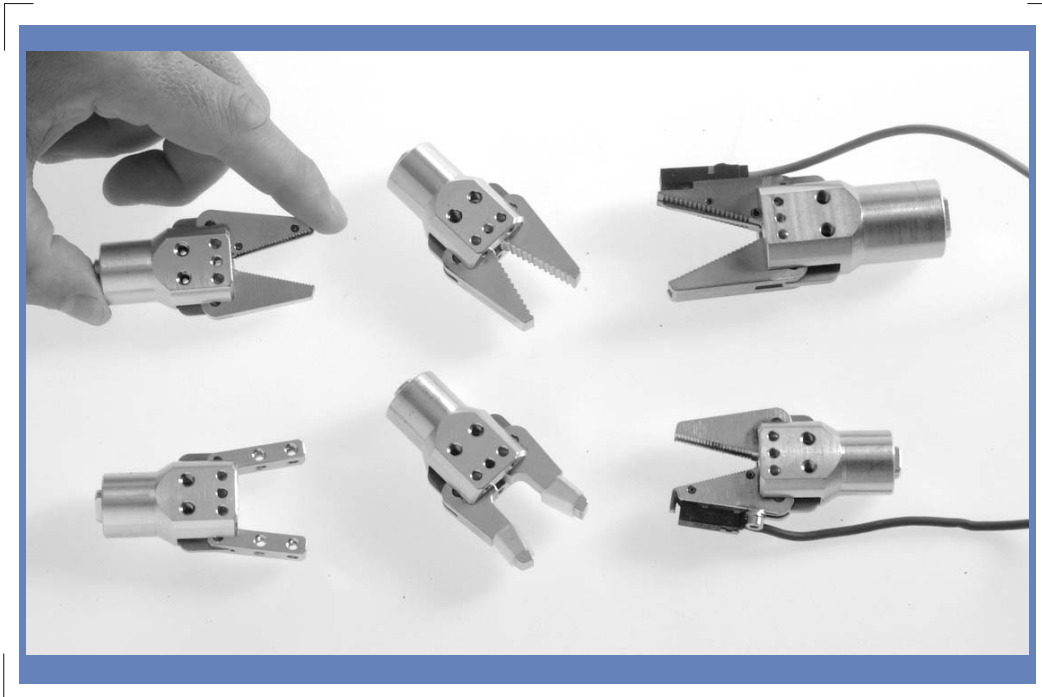


Zange $\varnothing$ 20	<b>G 20</b>	76 g	<b>GR 20</b>	72 g	<b>GS 20</b>	90 g
Zange $\varnothing$ 25	<b>G 25</b>	139 g	<b>GR 25</b>	134 g	<b>GS 25</b>	155 g



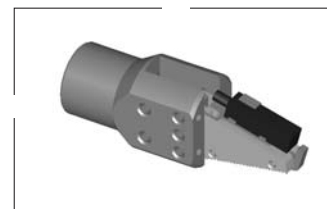
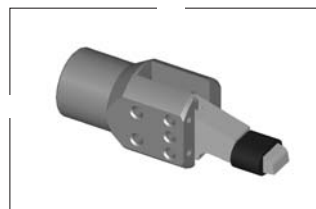
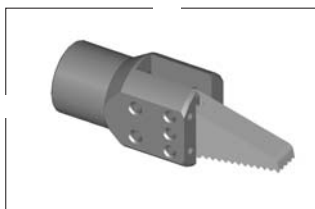
	S	S1	S2	S3	T	T1	T2
Zange $\varnothing$ 20	47	4	14,5	26	9	12	17
Zange $\varnothing$ 25	60	6,5	19,5	31,5	11	14	19

		Gewicht
Zange $\varnothing$ 20	<b>SPG 20</b>	3 g
Zange $\varnothing$ 25	<b>SPG 25</b>	5 g

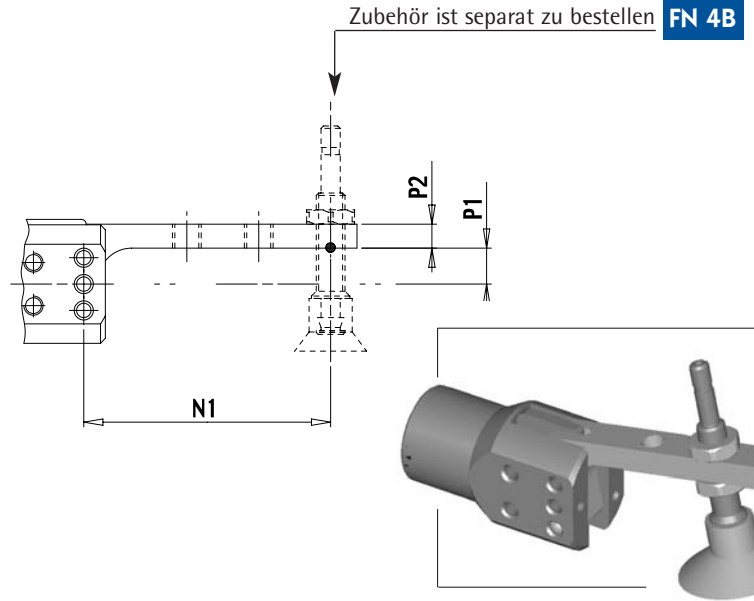
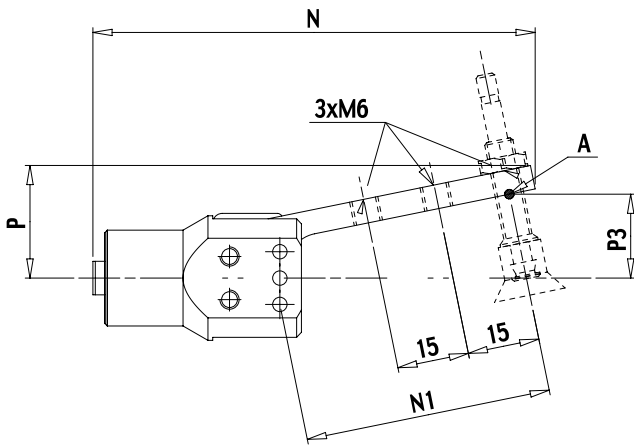


	E	E1	F	F1	F2
Zange $\varnothing$ 20	69	20	26	5	16
Zange $\varnothing$ 25	92	27	30	4	20

Kraft bei 6 Bar an A
40 N
56 N

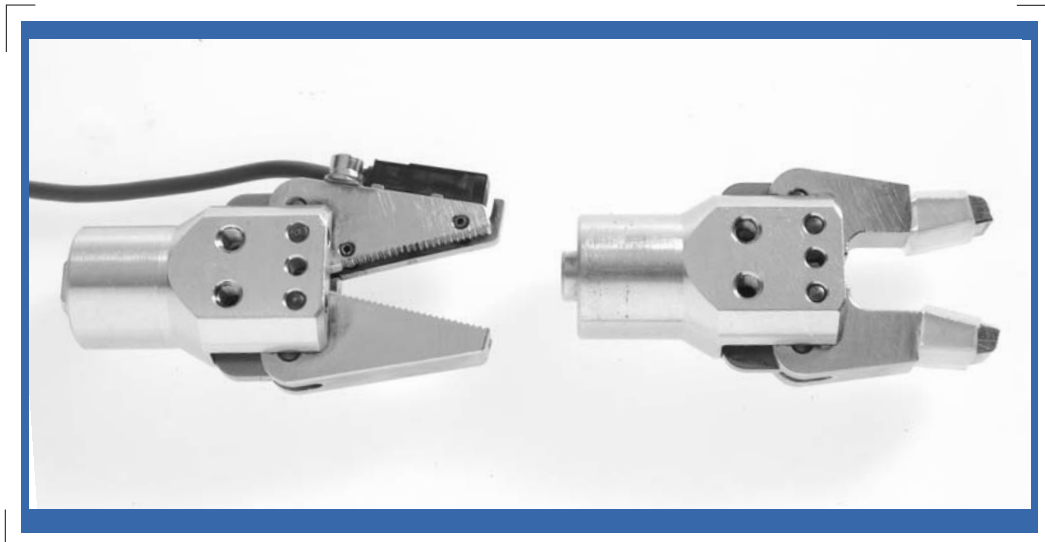


Zange $\varnothing$ 20	<b>G 120</b>	53 g	<b>GR 120</b>	49 g	<b>GS 120</b>	67 g
Zange $\varnothing$ 25	<b>G 125</b>	100 g	<b>GR 125</b>	95 g	<b>GS 125</b>	116 g

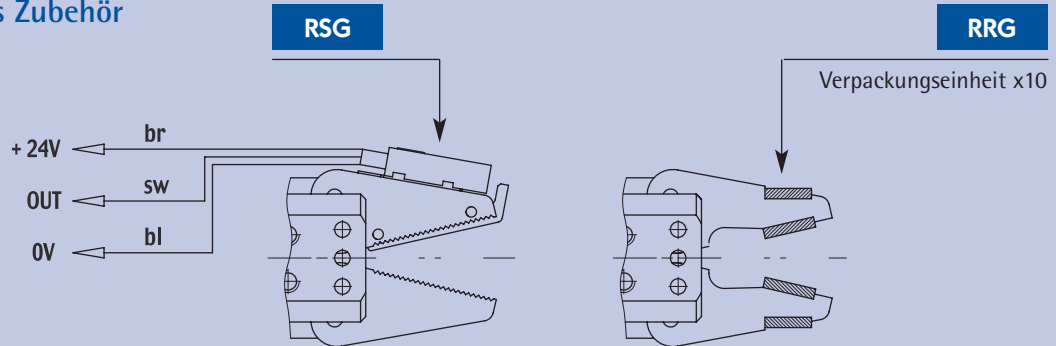


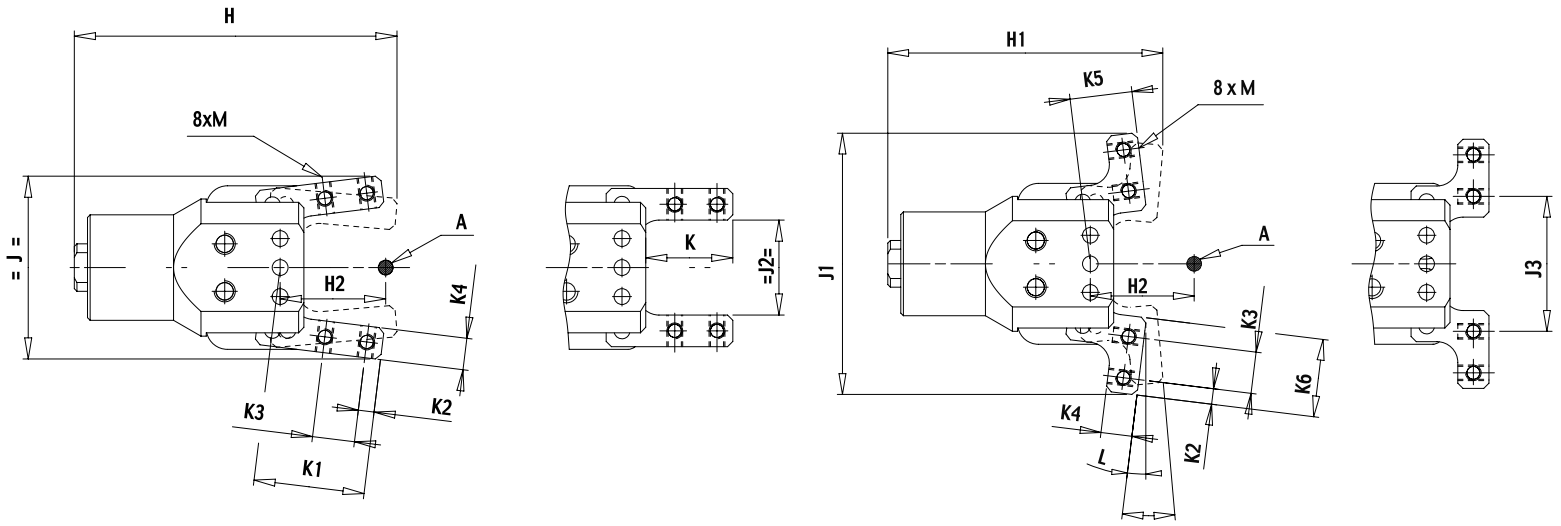
	N	N1	P	P1	P2	R
Zange $\varnothing$ 20	63	21,5	18	7,5	5	11,5°
Zange $\varnothing$ 25	80	26	22	8,5	6	14°

Zange $\varnothing$ 20	<b>GV 20</b>	60 g
Zange $\varnothing$ 25	<b>GV 25</b>	108 g



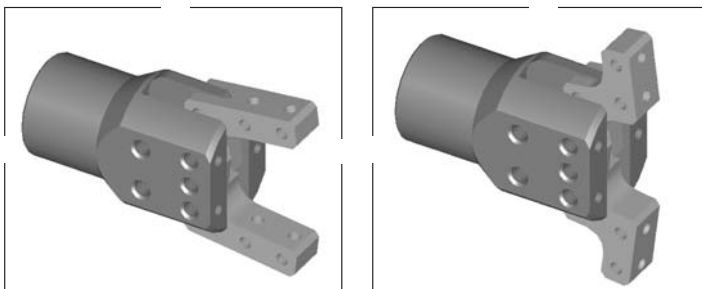
## ◆ wechselbares Zubehör



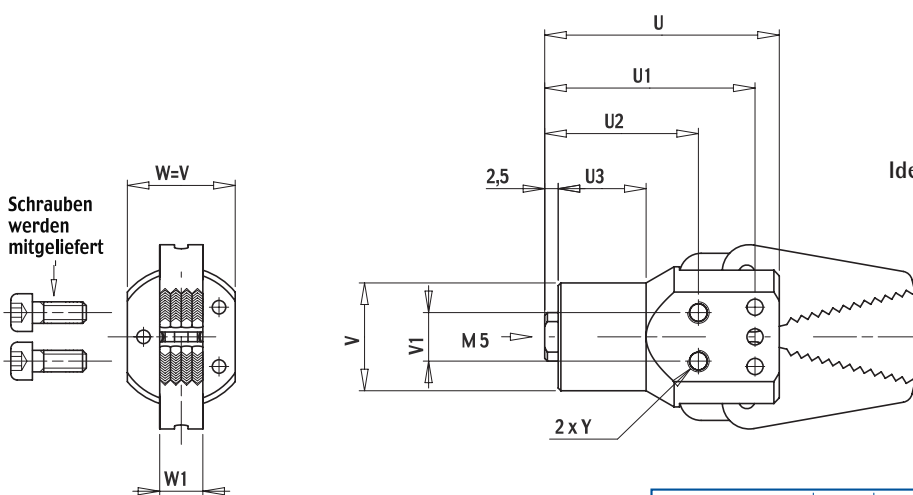


	H	H1	H2	J	J1	J2	J3	K	K1	K2	K3	K4	K5	K6	L	L1	M
Zange $\varnothing$ 20	60	53	20	34	50	18	26	14	21	3	8	6	12	15	7°	12°	M3
Zange $\varnothing$ 25	78,5	72	27	44	64	20	31	18	25	4	10	7	14,5	19,5	12°	20°	M4

Kraft an A
40 N
56 N

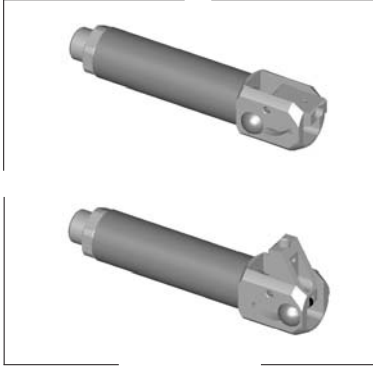


Zange $\varnothing$ 20	<b>GJ 20</b>	56 g	<b>GJ 20 A</b>	56 g
Zange $\varnothing$ 25	<b>GJ 25</b>	100 g	<b>GJ 25 A</b>	105 g

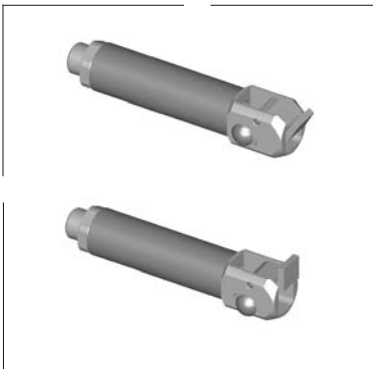
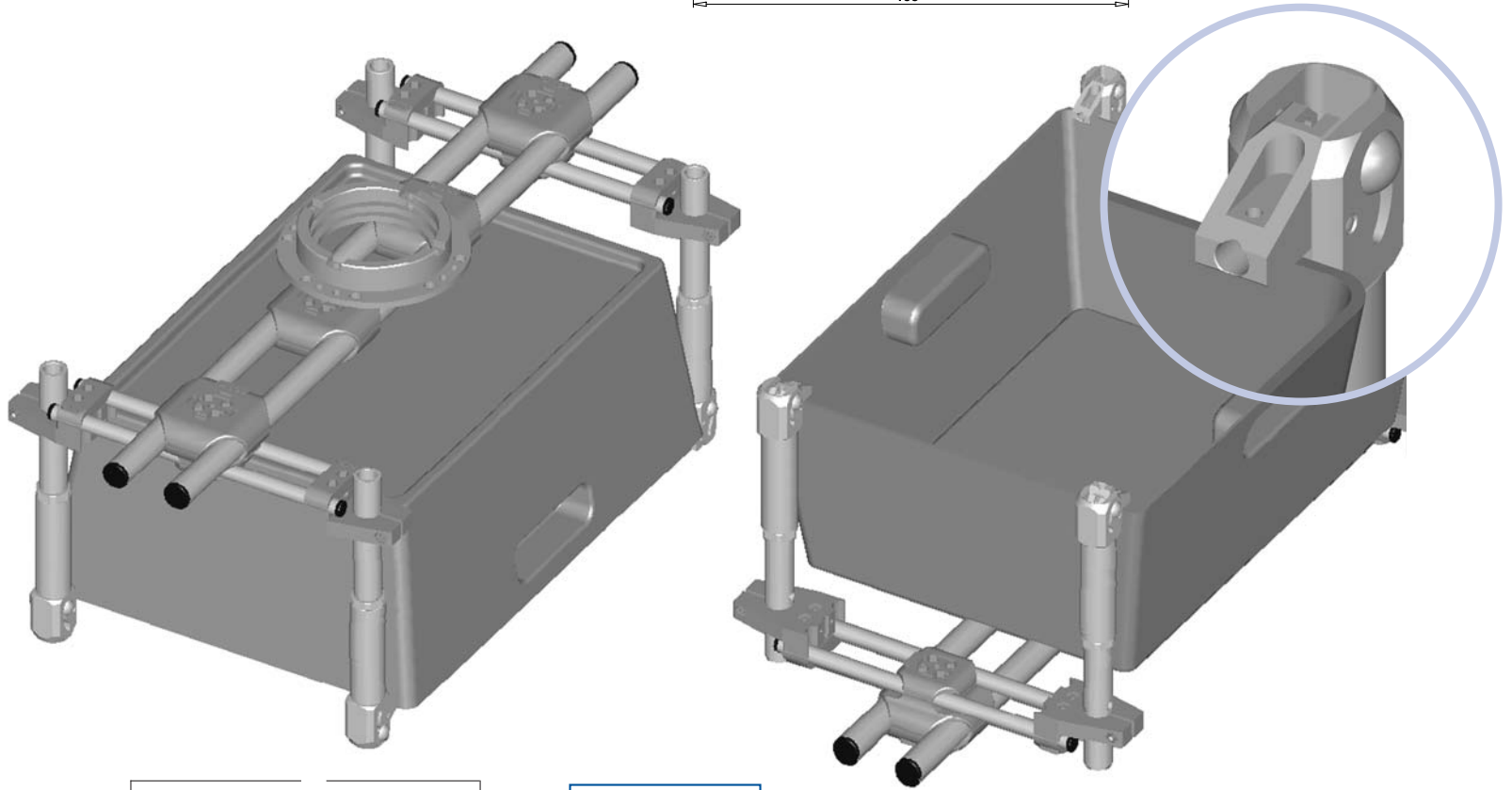
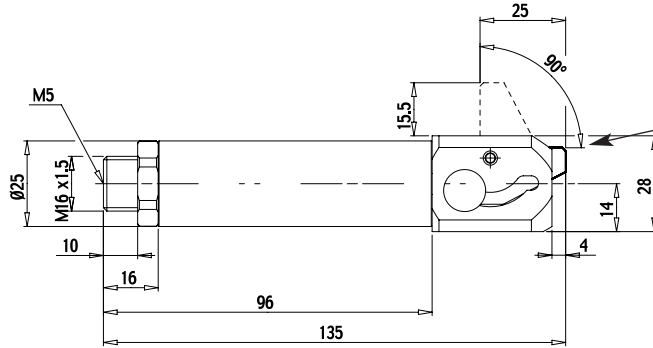
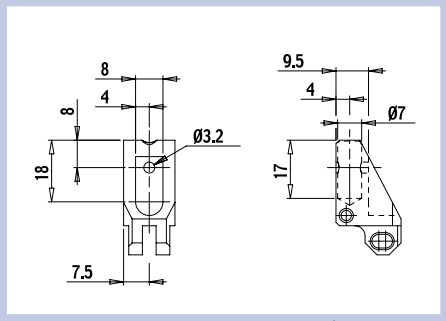


Identische «Maße» für alle Zangentypen

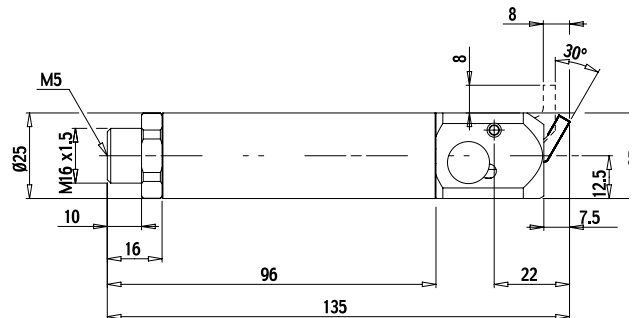
	U	U1	U2	U3	V	V1	W1	Y
Zange $\varnothing$ 20	43,5	39	28,5	16	$\varnothing$ 20	9	8	M4
Zange $\varnothing$ 25	59	53,5	39,5	26	$\varnothing$ 25	11	10	M5



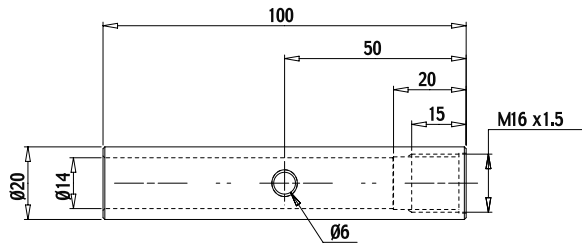
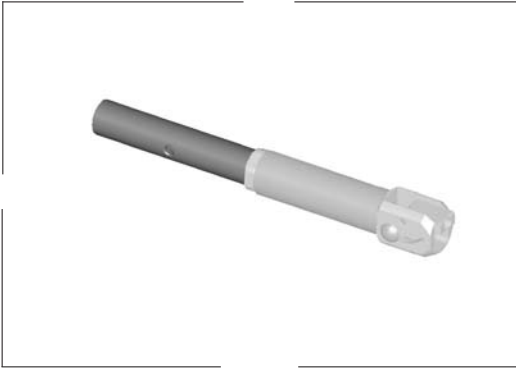
**GF 90**  
200 g



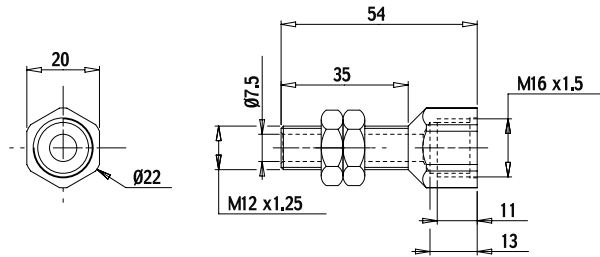
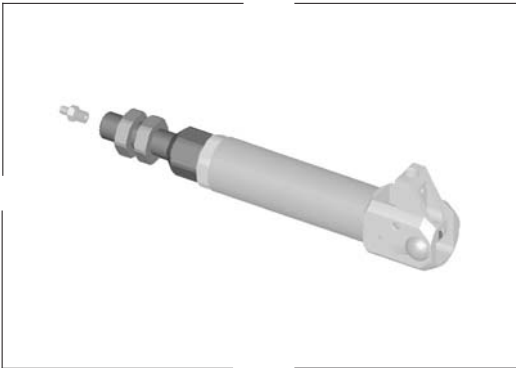
**GF 30**  
190 g



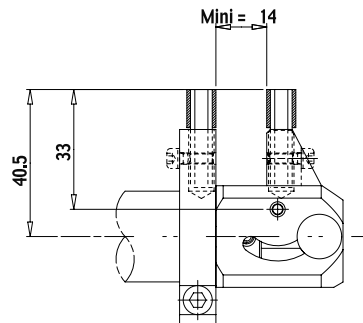
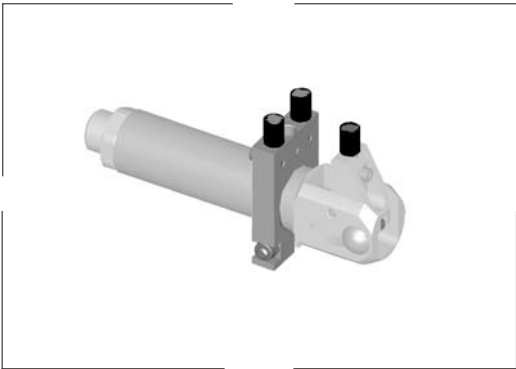




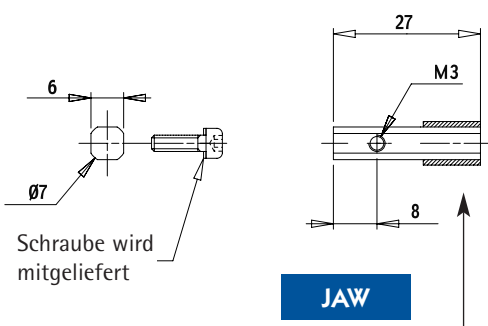
<b>LGFE</b>
42 g



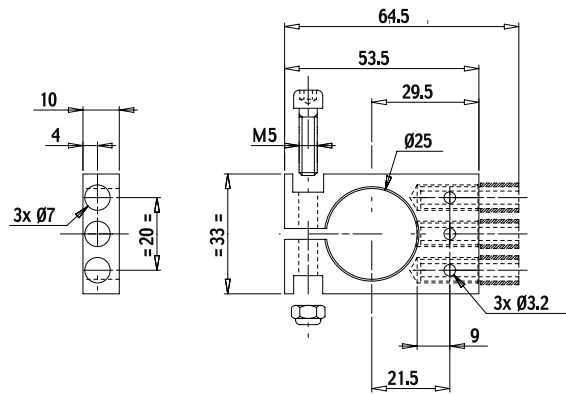
<b>SGFE</b>
17 g

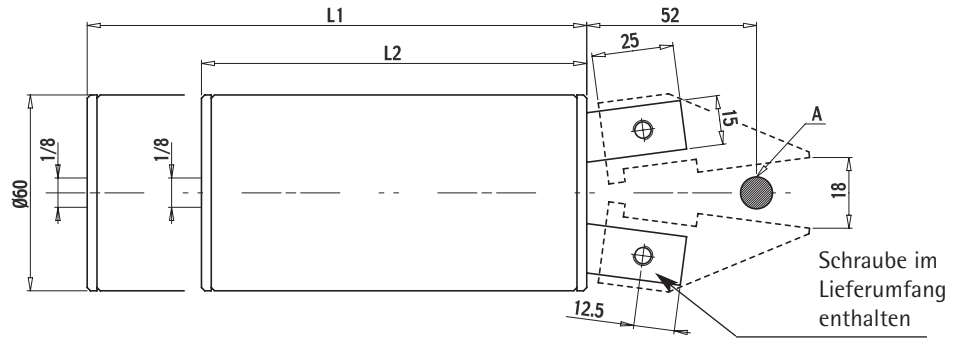


<b>JGFL</b>
40 g



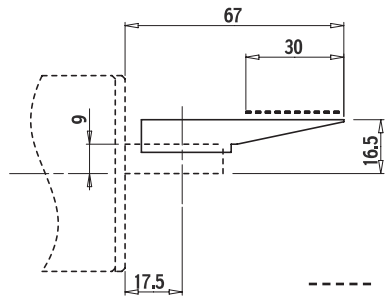
<b>JAW</b>
------------





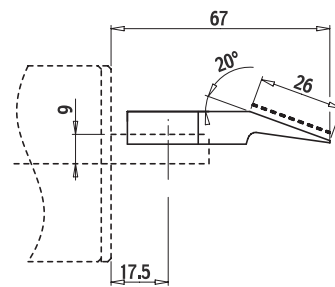
Zylinder ohne Schneide	L	Gewicht	Kraft an A
<b>GK 60 A</b>	L1 = 203	2,3kg	800 daN
<b>GK 60 B</b>	L2 = 148	1,6 kg	280 daN

### ◆ grade Schneidklinge (gehärtet)



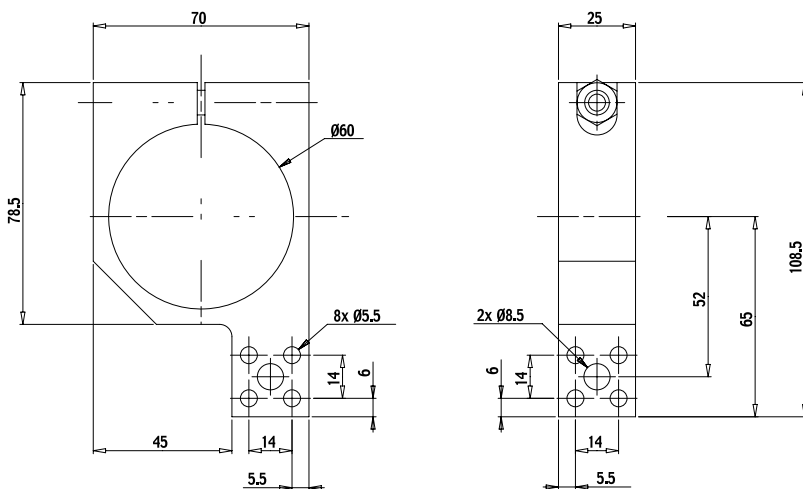
**SB 60 L**  
70 g

### ◆ schräge Schneidklinge (gehärtet)



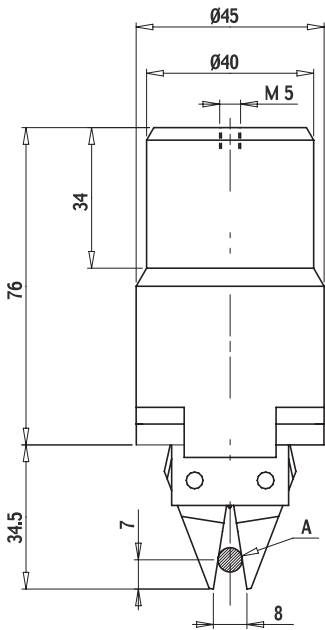
**IB 60 L**  
84 g

← bewegliche Klinge →

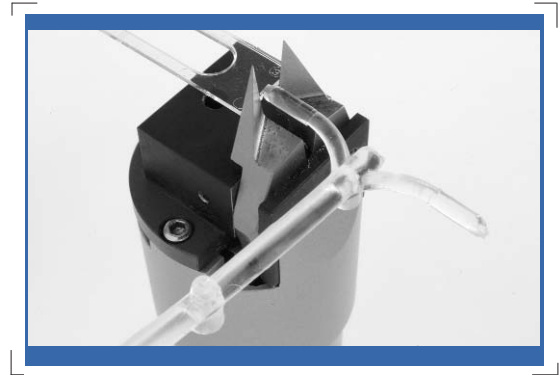


**FF 60**  
200 g





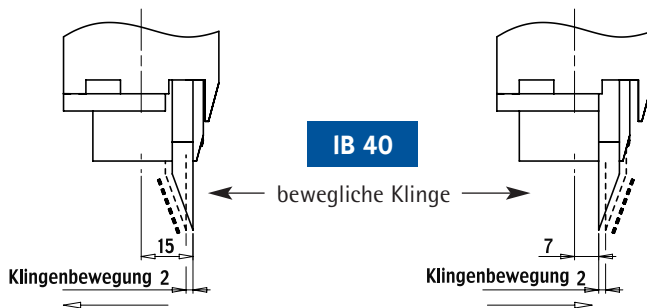
maximale Kraft:  
bei 6 bar an A  
= 200 daN



**CKI 40 A**  
330 g

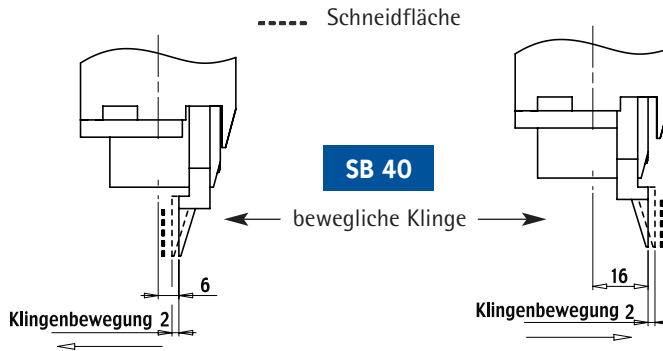
Zange komplett  
mit Klingen

**CKS 40 A**  
330 g

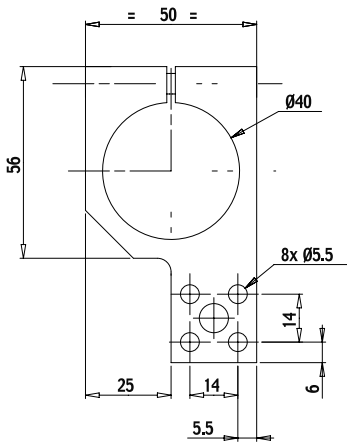


**CKI 40 B**  
330 g

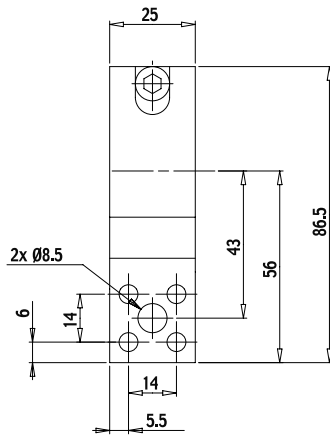
Zange komplett  
mit Klingen



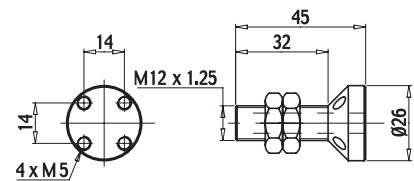
**CKS 40 B**  
330 g

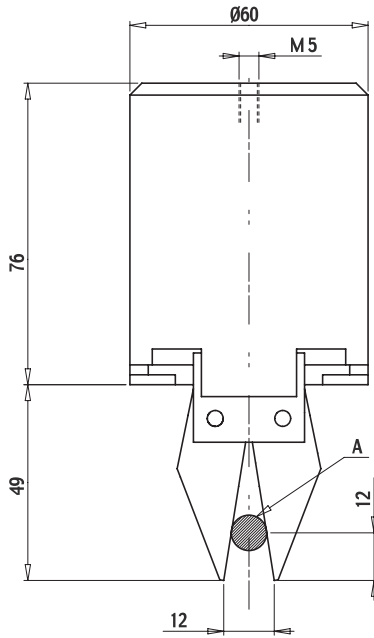


**FF 40**  
135 g



**FA 40**  
67 g



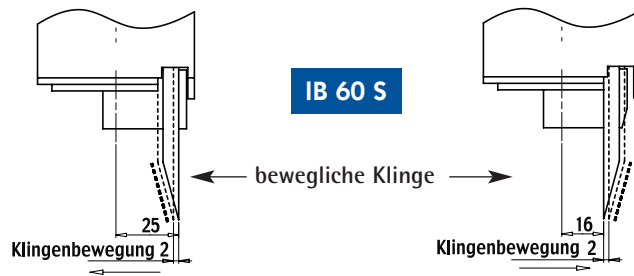


maximale Kraft:  
bei 6 bar an A  
= 350 daN



**CKI 60 A**  
700 g

Zange komplett  
mit Klängen

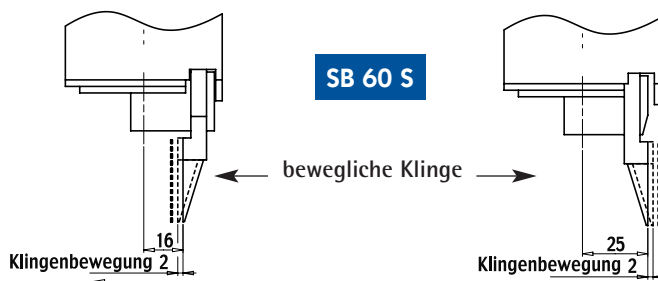


**CKI 60 B**  
700 g

Zange komplett  
mit Klängen

----- Schneidfläche

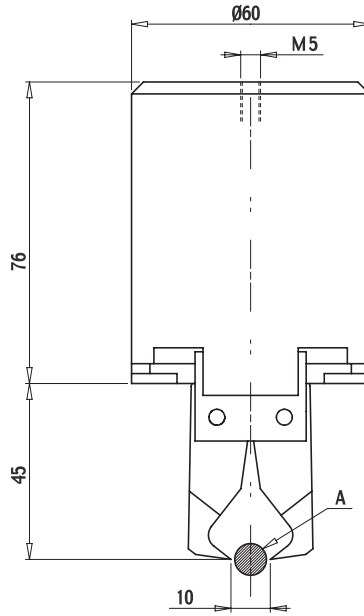
**CKS 60 A**  
700 g



**CKS 60 B**  
700 g

----- Schneidfläche

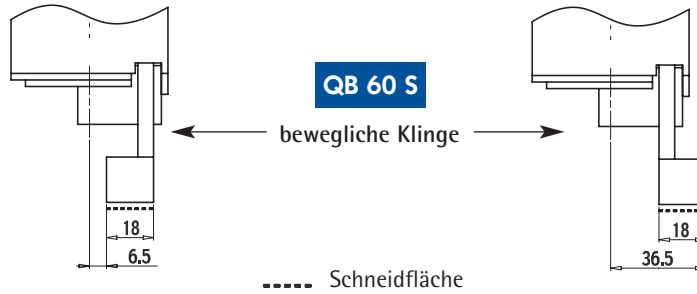
maximale Kraft:  
bei 6 bar an A  
= 280 daN



Zange komplett  
mit Klingen

**CKQ 60 A**

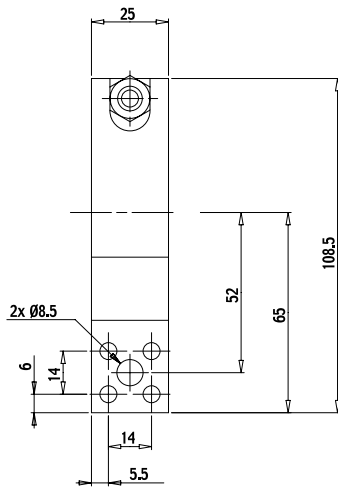
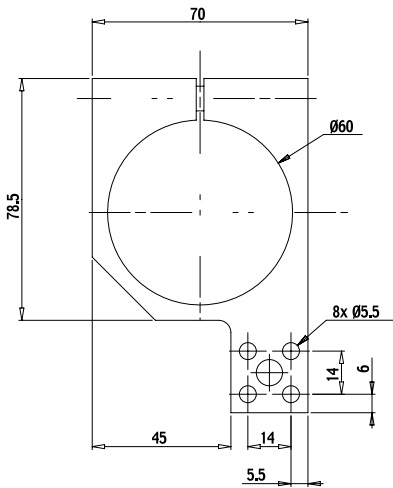
700 g



Zange komplett  
mit Klingen

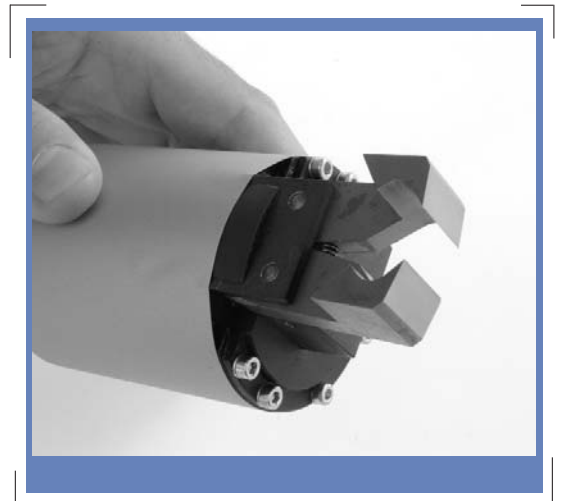
**CKQ 60 B**

700 g



**FF 60**

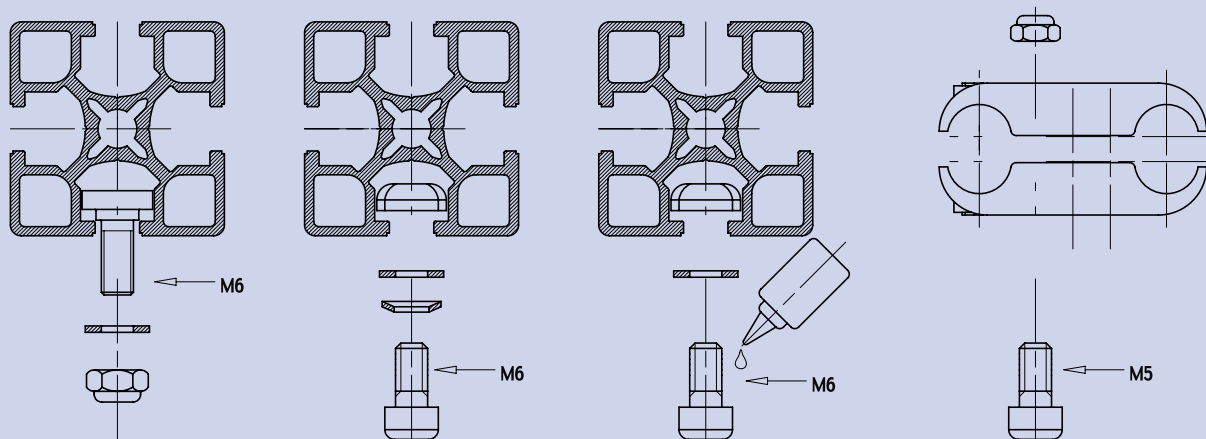
200 g



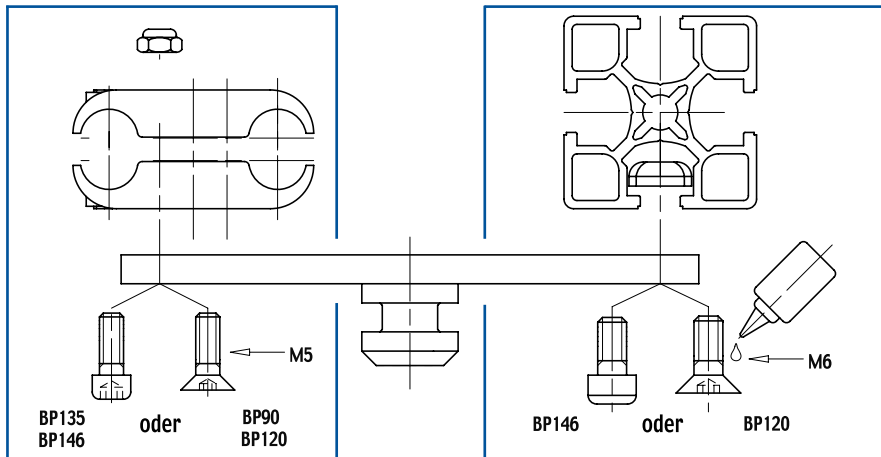
	M6	M6	M5	M6	M5
Verpackungseinheit	x1	x20	x50	x20	x50
L = 12	-	<b>B12</b>	<b>C12</b>	<b>D12</b>	<b>E12</b>
L = 16	<b>A16</b>	<b>B16</b>	<b>C16</b>	-	<b>E16</b>
L = 20	<b>A20</b>	<b>B20</b>	<b>C20</b>	-	<b>E20</b>
L = 25	<b>A25</b>	-	<b>C25</b>	-	<b>E25</b>
L = 30	-	-	<b>C30</b>	-	<b>E30</b>
L = 40	-	-	<b>C40</b>	-	<b>E40</b>

x50	x20	x50	x50	x50	x50	x1
<b>NUT1</b>	<b>NUT2</b>	<b>NUT3</b>	<b>NUT4</b>	<b>WASH1</b>	<b>WASH2</b>	<b>PBAR</b>
M6	M6	M6	M5	Ø6	Ø6	L = 90 mm

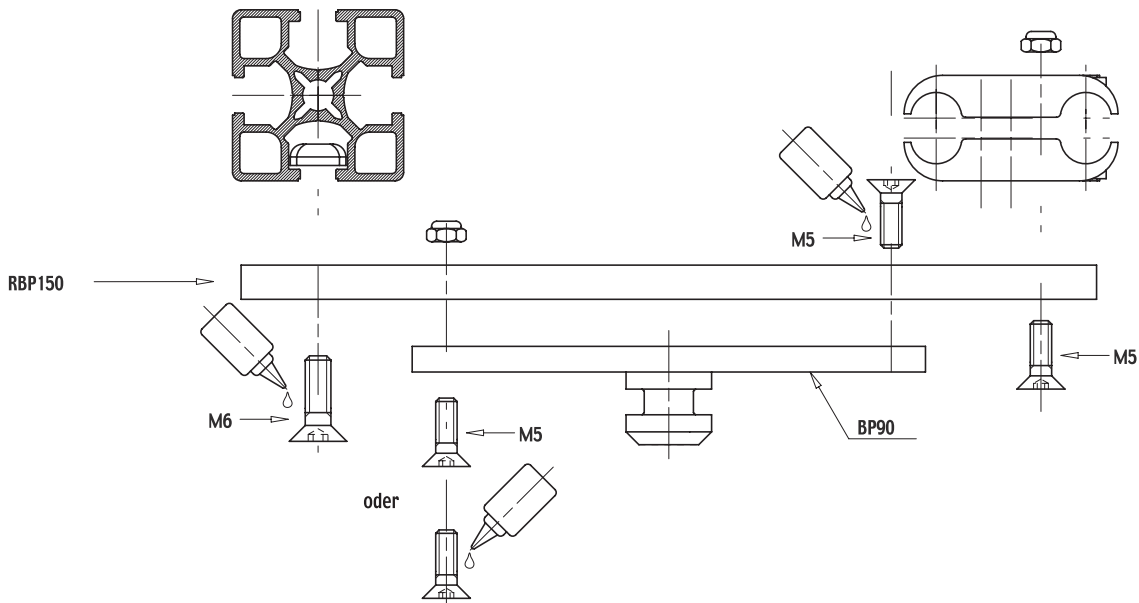
### ◆ Möglichkeiten zur Befestigung



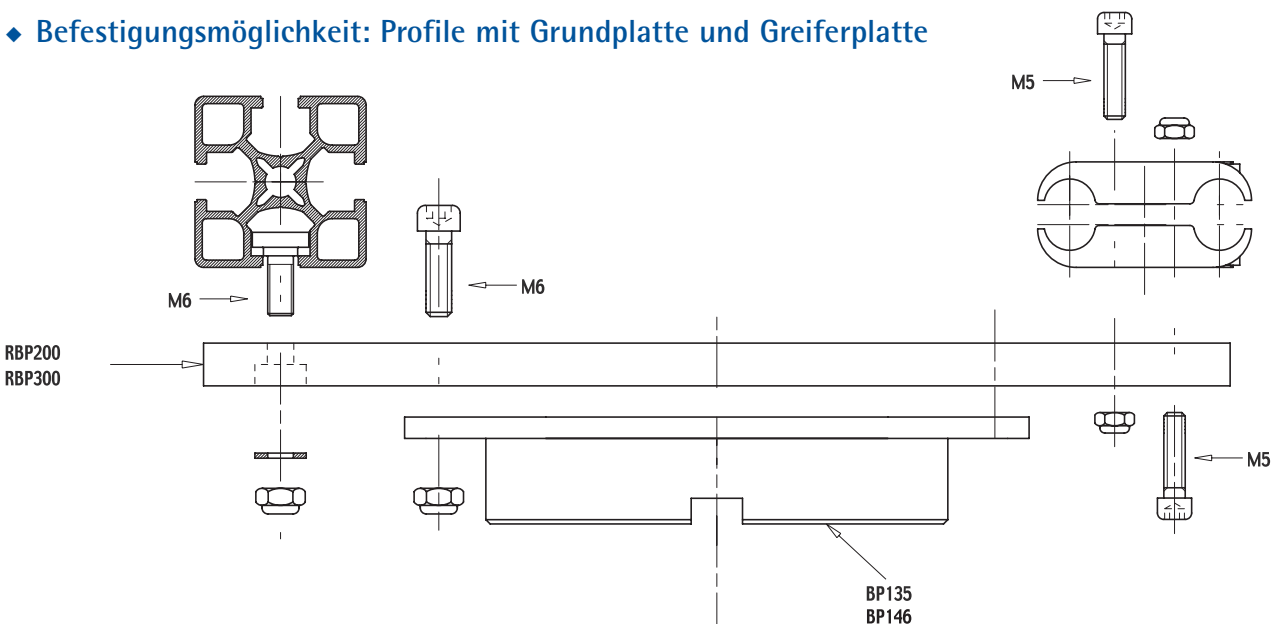
◆ Befestigungsmöglichkeit: Profile mit Grundplatte



◆ Befestigungsmöglichkeit: Profile mit Grundplatte und Greiferplatte

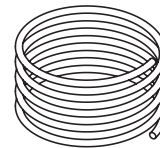


◆ Befestigungsmöglichkeit: Profile mit Grundplatte und Greiferplatte



Anschlussgröße									
	<b>SP 4</b> ∅ 4 -	<b>SP 6</b> ∅ 6 -	<b>MP 64</b> ∅ 6 ∅ 4 x 1	<b>RP 44</b> ∅ 4 ∅ 4 x 1	<b>RP 66</b> ∅ 6 ∅ 6 x 1				
Verpackungseinheit	x 10	x 10	x 1	x 1	x 1				
Anschlussgröße									
	<b>PM 54</b> M5 ∅ 4	<b>PM 56</b> M5 ∅ 6	<b>RM 54</b> M5 ∅ 4	<b>RM 56</b> M5 ∅ 6	<b>QM 54</b> M5 ∅ 4	<b>QM 56</b> M5 ∅ 6	<b>Q 186</b> 1/8 ∅ 6		
Verpackungseinheit	x 10	x 10	x 10	x 10	x 10	x 10	x 1		
Anschlussgröße									
	<b>RQM 54</b> M5 ∅ 4	<b>RQM 56</b> M5 ∅ 6	<b>RQ 186</b> 1/8 ∅ 6	<b>RQ 44</b> ∅ 4 ∅ 4 x 10	<b>SM 5</b> M5 x 10				
Verpackungseinheit	x 10	x 10	x 1	x 10	x 10				
Anschlussgröße									
	<b>DP 44</b> ∅ 4 ∅ 4	<b>DP 64</b> ∅ 6 ∅ 4	<b>DP 66</b> ∅ 6 ∅ 6	<b>QP 44</b> ∅ 4 ∅ 4	<b>QP 64</b> ∅ 6 ∅ 4	<b>QP 66</b> ∅ 6 ∅ 6	<b>EP 44</b> ∅ 4 ∅ 4	<b>EP 46</b> ∅ 4 ∅ 6	<b>EP 66</b> ∅ 6 ∅ 6
Verpackungseinheit	x 1	x 1	x 1	x 1	x 1	x 1	x 10	x 10	x 10
Anschlussgröße									
	<b>TP 44</b> ∅ 4 ∅ 4	<b>TP 66</b> ∅ 6 ∅ 6	<b>CROS 44</b> ∅ 4 ∅ 4	<b>CROS 66</b> ∅ 6 ∅ 6					
Verpackungseinheit	x 1	x 1	x 1	x 1					

Anschlussgröße	
Leitungsdurchmesser 2,7x4 halbstarrer Polyamide	
<b>RT4BK</b>	schwarz
<b>RT4RD</b>	rot
<b>RT4BL</b>	blau
Leitungsdurchmesser 4x6 halbstarrer Polyamide	
<b>RT6BK</b>	schwarz
<b>RT6RD</b>	rot
<b>RT6BL</b>	blau
Leitungsdurchmesser 2,7x4 flexibler Polyurethane	
<b>FT4BK</b>	schwarz
<b>FT4GY</b>	grau
<b>FT4RD</b>	rot
<b>FT4BL</b>	blau
Leitungsdurchmesser 4x6 flexibler Polyurethane	
<b>FT6BK</b>	schwarz
<b>FT6GY</b>	grau
<b>FT6RD</b>	rot
<b>FT6BL</b>	blau



L = 5 m

Anschlussgröße = Außendurchmesser des Schlauches

∅ Rohr = ∅ Rohraußendurchmesser





