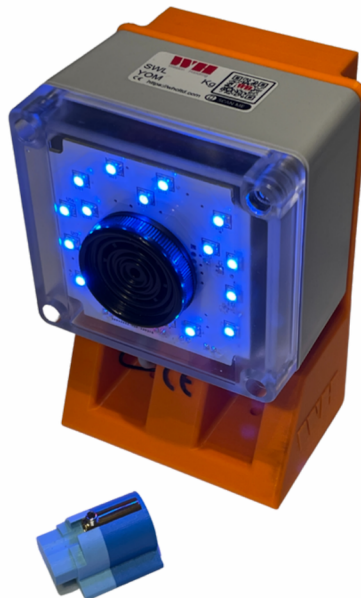




Materials Handling & Safety Innovators

**ACKBelt®-2021™
Anti-Crush Systems**

Manual



Contents

Definitions.....	Pg 3
What is an ACKBelt®-2021™ and how does it work?	Pg 4-5
Why you should fit ACKBelt's.....	Pg 6
Where to fit ACKBelts.....	Pg 7
How to Measure for an ACKBelt®.....	Pg 8
How to fit ACKBelts.....	Pg 8
Methods of fitting ACKBelts.....	Pg 10
ACKBelt®-CrashPad™ for Trucks and Barriers.....	Pg 11
Where to fit an ACKBelt®-CrashPad™.....	Pg 12
ACKBelt Components Identification.....	Pg 13
ACKBelt Components Part Numbers.....	Pg 14
ACKAlarm™ Warning Systems.....	Pg 15
Aerial Work Platform Anti Crush Safety.....	Pg 16
ACKBelt®-2021™ Specifications.....	Pg 17
Bendy-Switch™ Racking Protection.....	Pg 18
Awards and Recognition.....	Pg 18
Global Sales - Local Servicing	Pg 19
Contact Us	Pg 20

Key Go-To Subjects:

What is the ACKBelt®-2021™	Pgs 4-5
Fitting ACKBelt's	Pgs 9-10
ACKBelt®-CrashPad's	Pgs 11-12
ACKAlarm™ Warning Systems	Pg 15
ACKBelt® Safety for MEWP's	Pg 18



Linking Excellence in Design, to Safety in Practice



Definitions:

The **ACKBelt®-2021™** is a pressure sensitive electrical switching device consisting of a compliant housing, constructed from a number of different materials, including Polyurethane, EPDM, and other T.P.E.'s.

Key Properties:

The pressure sensitive ACKBelt® has a number of properties that define its operating characteristics.

In use, the **ACKBelt's** function as Normally-Open (NO), momentary-contact switches. Activation occurs when a force applied to the housing is transferred to internal conductive strips, causing them to touch and creating a contact closure. When the force is removed, the contacts open again.

Profile:

The cross section of the **ACKBelt®** can vary in height, width, length and shape. Bending it around a radius will decrease the gap between the inner conductive surfaces. Therefore profiles can vary according to the requirement of the application.

Actuation Force:

The amount of force necessary to cause a contact closure of the **ACKBelt®** by an object acting upon the dome of the ACKBelt®. NB: Different forces may be required at different points along the ACKBelt's length.

Compliance:

The amount of deformation the ACKBelt dome undergoes before the switch actuates. Low compliance is desirable when immediate actuation is required. Higher compliance gives added cushioning and offers some immunity to false or inadvertent actuation's.

Overtravel:

The amount of deformation the ACKBelt can accommodate after switch actuation. Overtravel determines the amount of cushioning after contact with an object.

Competent Person:

A competent person is someone who has sufficient training and experience or knowledge and other qualities that allow them to complete the task properly. The level of competence required will depend on the complexity of the situation and the particular skills and knowledge needed.





ACKBelt®-2021™ Development;

Born from necessity during the Covid-19 pandemic, when we lost our supplier of original ACKBelt® components, the all new **ACKBelt®-2021™** is the latest innovation with Registered Design and Patent Pending, from Weston Handling.

The ACKBelt®-2021™ is the result of over 2years Research & Development and is a Vehicle Crush and Crash Alert system that needs no add-on electrical switch, ***because it is a switch!***

It comprises an elastomeric compressible fabricated belt, constructed to form an impact absorbing chamber, on the inside of which, state-of-the-art Electro-Conductive material is stitched using Kevlar thread, forming a Normally Open (NO) switch.

The result is tough Anti-Crush Belt, which both cushions impacts and, when closed, forms an electrical circuit that can be wired into a truck's Anti-Crush system, or into an external Crash Reporting or Telematic monitoring system.



Fitting around your powered trucks, the **ACKBelt®-2021™** can connect directly to the existing, standard, Tiller Arm "Anti-Crush Button", or to an OEM reporting system. This increases the detection area of an impact by typically, well over 800%! (A button being typically 80mm²).

Alternatively, when paired with the **ACKAlarm™** independent alarm system, the ACKBelt® offers a self-contained audible & visual alarm with outputs to proprietary Telematic reporting systems.

ACKBelt's can be retrofitted to most makes and models of trucks. Making it ideal for retrofitting to mixed truck fleets.

Fitting **ACKBelt's** to your fast-moving powered trucks is your easiest way of installing cost-effective, innovative safety features that can instantly give you greater protection for the operator, for plant and equipment, giving you, ***greater safety and a faster payback!***



WH for Anti-Crush Safety Systems...

History:

By their very nature, powered Materials Handling trucks, such as Forklifts, Pallet trucks and Stacker trucks, present a hazard to bystanders and to infrastructure, particularly when you consider most of them operate in close proximity to machinery, racking and personnel.

The danger of Crush injuries from Forklift Trucks and Industrial Trucks, is well known. Indeed, there are many systems on the market designed to mitigate, one or more of the typical hazards. These include:

- Tiller Arm Anti-Crush Button
- Speed Zoning
- Social Distancing Solutions
- Camera Active Reversing Systems
- Pedestrian Detection Cameras
- Warning Light Systems
- Speed Limiters

**Tiller Arm Anti-Crush Button:
Typically 7-10cm Target width**



Many of the above systems link into proprietary vehicle reporting and monitoring systems. Likewise, ACKBelt®s, in their simplest capacity, are just flexible Normally Open (NO) switches, detecting impact when pressed, to form a closed switch. However, although simple, some important benefits of the ACKBelt® systems are:

- 1). When fitted, they are positioned on the outside of the Truck, therefore they are a visual reminder to the operator on approach, that he/she is being monitored.
- 2). Being made from impact absorbing elastomer, the ACKBelt's can absorb some energy and give some degree of protection to the object they strike.
- 3). As a simple switching device, the ACKBelt® when activated, is an ideal additional input for many of the proprietary Fork Truck monitoring systems already fitted to trucks.
- 4). The ACKBelt's are pliable and can be moulded around corners to the shape of the object they are protecting.

When should I fit an ACKBelt®?

Whenever there is the risk of a powered industrial truck, moving in an environment where it is likely to come into contact with infrastructure, goods or personnel and there is a need to mitigate or manage, operator error.

**ACKBelt®-2021™
Typically 70-200cm Target width!**



WH for Powered Truck Safety...

Why fit an ACKBelt®-2021™ Anti-Crush System?

Tiller Arm Anti-Crush Buttons are fitted to virtually all powered Pedestrian Trucks globally, in order to comply with national & international regulations, as described in BS EN ISO 3691-1:2012. *But they are limited in what they can do in practical use.*

A Tiller Arm Anti-Crush Button typically works when an operator is trapped and the Tiller Arm is moving towards them at the correct angle for the Anti-Crush button to be struck and thus activate the Truck's safety system. However, often in tight spaces, operators will need to stand to the side of the Tiller Arm, putting themselves in the position that the Truck may strike them first, without the Anti-Crush Button being triggered.

The ACKBelt® seeks to enhance the safety of the trucks' own Anti-Crush Safety System, as prescribed in, for Eg: BS EN ISO 3691-1:2012, by greatly increasing the area over which an impact can be detected. **It does not replace the truck's own Anti-Crush system (!)**, which remains fully functional as installed by the OEM. Rather, **it enhances** the truck's existing system.

ACKBelt® systems work in parallel to the truck's existing Anti-Crush System, either as an additional trigger for said system, or as an independent alarm, capable of alerting, reporting and/or recording the incident. Fitting an ACKBelt® system will improve safety for both operators and other personnel, over and above the requirements of BS EN ISO 3691-1:2012.

As discussed above, when an ACKBelt® is connected to a powered Truck's own Anti-Crush Button, it is in parallel to it, so either it, or the ACKBelt® can trigger the truck's pre-programmed response to activation.

Tiller Arm Anti-Crush button Variations



WH for Anti-Crush Systems!

Where and on what can I fit the ACKBelt®-2021™?

The ACKBelt®-2021™ should be fitted anywhere on a truck, where a Risk Assessment carried out by a Competent Person, concludes that there is a risk of part of the truck coming into contact with personnel, infrastructure or goods.

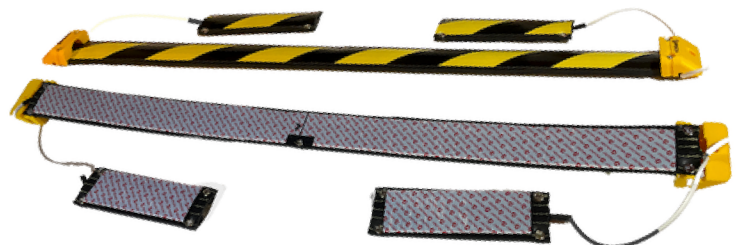
There are a range of accessories for mounting ACKBelt® systems to vehicles, such as Forklift Trucks, Aerial Work Platforms (MEWP's), Tug Units & Burden Carriers. Please ask for details.

The ACKBelt® system can be independent of the truck completely, with the supply of a separate control box, complete with options including, Siren, Warning Beacon, Battery supply and even a Telematic reporting system. NB: The ACKBelt® will work well as an additional safety feature to OEM Telematic reporting systems.

Where the truck to be protected has an Anti Crush Button, the ACKBelt® can be connected directly to it if it is a Normally Open (NO) switch, or via a Relay, if it is a Normally Closed (NC) switch. In this case, when the ACKBelt® is activated by pressure, the truck's Anti Crush Button is activated.

Alternatively, it can be used to instigate another action, for example to apply brakes or cut the ignition. It's that simple! Thus, the ACKBelt can greatly enhance existing systems.

Answer: Fit ACKBelt® Anti-Crush Systems where they are most needed!



- 3-Piece System For Pallet Trucks with rising Sides
- Heavy Duty 'Velcro' backing for Quick Installation



Easy-Fitting Anti-Crush Systems!

How to fit an ACKBelt®-2021™

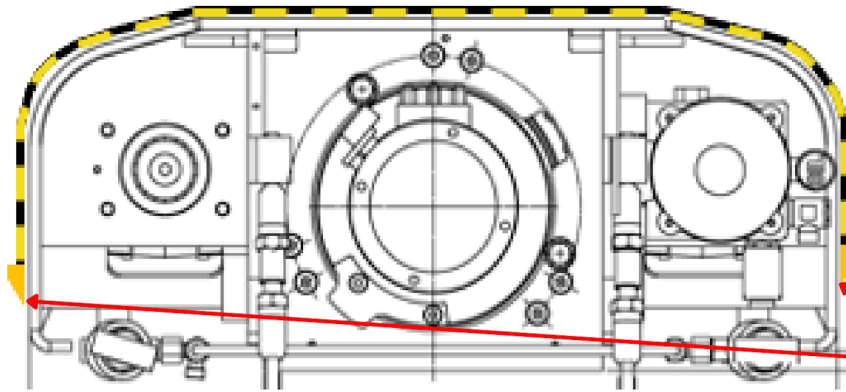
there are several ways it can be fitted to a truck, including using fixing screws, adhesive bonding, magnets, cable ties, etc. Here we will outline the recommended method.

*****NB: IF IN DOUBT ON ANY QUESTION, CONSULT THE MANUFACTURER!*****

ACKBelt®-2021™ Complete Assembly Comprises:



Measuring the Truck Base Length for an ACKBelt® as shown here:



**Overall Length 'L' is
End Cap to End Cap**

The recommended method of installing the **ACKBelt®** is to permanently mount it using adhesive backed Heavy Duty Velcro® to fit it in place initially and then fixing screws to fasten it permanently through the fixing holes in the ACKMount™ End Caps and Eyelets, (if fitted).

The first step for all methods of fixing, is to mark the centre point of the top edge of the ACKBelt®, through the centre eyelet. Then mark the points where the M5 fixing screws protrude through the ACKMount™ End Caps into the truck and mark a line between the two points around the truck where the ACKBelt is required. This is the centreline of the ACKBelt.



Easy-Fitting Method for ACKBelt®



Mounting an ACKBelt® with Velcro® and fixing screws: (Read Safety note 1 below)!

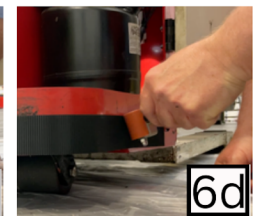
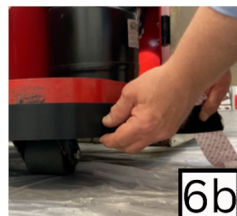
- 1). After ensuring the surface of the truck is clean & dry, (Eg: with an Alcohol wipe provided), firstly mark a centreline on the truck and the horizontal position on that line of the ACKBelt's central Eyelet.
- 2). Drill a hole & Tap M5. 3). Check the long M5x30 screw provided, fits the thread.



- 4). Pass the long screw through the central Eyelet of the ACKBelt® and screw in a few turns to fasten the ACKBelt® loosely to the truck. 4a). Feed the ends of the ACKBelt® to their desired positions and run a pencil along the top of the ACKBelt®. 4b). Mark the position of the holes in the End Caps and Eyelets. (*TIP!* To ensure too much tension is NOT applied when positioning the End Caps, connect a multimeter or similar continuity alarm to the ACKBelt® to detect internal contact of the switch). 5). Drill & Tap M5 holes marked for the End Caps and Eyelets. Remove the ACKBelt® and separate the two halves of the Velcro® strip.



- 6a). Peel off the backing from the centre outwards and, 6b-6c). fit the Velcro® to the truck, one side at a time, aligning it Ca. 5mm below the pencil line, with the central 'V' notch centred around the central Eyelet's tapped hole. 6d). Use pressure from a hand or roller to ensure good adhesion.



Easy-Fitting Anti-Crush Systems!

Years in the making, so you can fit them in minutes!

7). With the Velcro® hook strip firmly in place, fit the long screw through the central Eyelet of the ACKBelt® and again fit it loosely into the tapped hole. Align the two halves of the Velcro pulling on the belt with the same tension as when initially fitted, so as to align the holes of the end caps and eyelets. Fix the ACKBelt® to the truck permanently using the short countersunk screws in the Eyelets and Cap head screws in the End Caps.

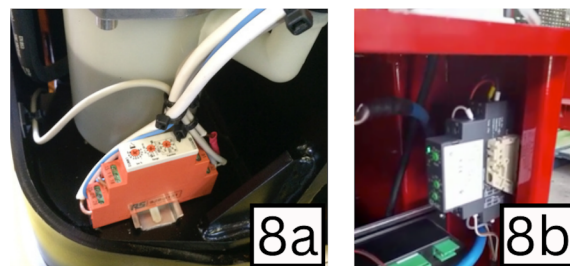
7a). Before fastening the End Caps, fit the slotted base of the ACKSpring™ around the fixing screw under the End Cap. Ensure the spring is tight up and square-on against the leading edge of the End Cap. 7b). Use a roller or hand pressure to ensure the two Velcro® halves are affixed. When done, replace the long centre screw with a short countersunk screw.



8). Wiring an ACKBelt® to a Truck's Electrical System: (Read Safety Note 2 below)!



The ACKBelt® is a Normally open, (NO) switch with two opposing contacts. Where a truck's Anti-Crush Button (ACB), is also a NO switch, the ACKBelt® can be wired directly to it, in parallel. Where the ACB operates as a Normally Closed (NC) switch, a Relay will need to be wired into the circuit. WH's preference is to use a Timer Relay, (See 8a & 8b for examples), with additional outputs for Beacons, Sirens, etc., however, a simple 5-pin Relay, (of the type common in automotive uses), will be sufficient. If you need further information, please ask.



Safety Note 1: assessment of the vehicle for correct and safe drilling must be carried out by a competent person.
Safety note 2: Connection to any vehicle must only be carried out by a competent person.

Drilling for End Caps



Fits all Shapes



Timer Relay Example



Heavy Duty 'Velcro' Mounting



ACKBelt®-CrashPad™ Fits to Anything!

The ACKBelt®-CrashPad™ is a new approach to Fork Lift Truck & Plant Safety.



Unlike Inertia monitoring systems, the **ACKBelt®-2021™** is a **giant switch**, that can trigger an alarm when struck, even at dead-slow speeds, such as when manoeuvring in tight spaces; **Protecting People and Plant!**

The **ACKBelt®-CrashPad™** is constructed from layers of tough polymer and can be moulded around tight radii, such as forklift truck counterweights, Racking, Barriers and roof columns.

In addition, it is **highly visible and a psychological reminder** to the driver that they are being monitored. It can be mounted in seconds using adhesive tape or magnetic tape, making it ideal for Training purposes. Eyelets allow permanent fixing.

Independent of the Truck, the CrashPad™ can be powered by a Control Box with Battery, Klaxon & Warning Light



When paired with the **ACKAlarm™**, the **ACKBelt®-CrashPad™** offers a self-contained audible & visual alarm with outputs to proprietary Telematic reporting systems.

Fitting ACKBelt's to your powered trucks is your easiest way of installing cost-effective, innovative safety features that can instantly give greater protection for the operator and for plant and equipment, giving YOU, **greater safety** and a **faster payback!**



Fit around Barriers, Columns, Racking, Bollards, Doorways, etc.



WH for Anti-Crush Safety Systems!

Where should I fit ACKBelt®-CrashPad™



Where do you think?



ACKBelt® Components

ACKBelt®-2021™ component parts:

Recognise the component you are looking for from the photosheet below and Identify the component and it's parts number from the table on the following page.

ACKBelt®-2021™ Anti-Crush Systems

PARTS IDENTIFICATION

Item 1	Item 2	Item 3	Item 4
			
Item 5	Item 6	Item 7	Item 8
			
Item 9	Item 10	Item 11	Item 12
			
Item 13	Item 14	Item 15	Item 16
			
Item 17	Item 18	Item 19	Item 20
			
Item 21	Item 22	Item 23	Item 24
			
Item 25			
			
			

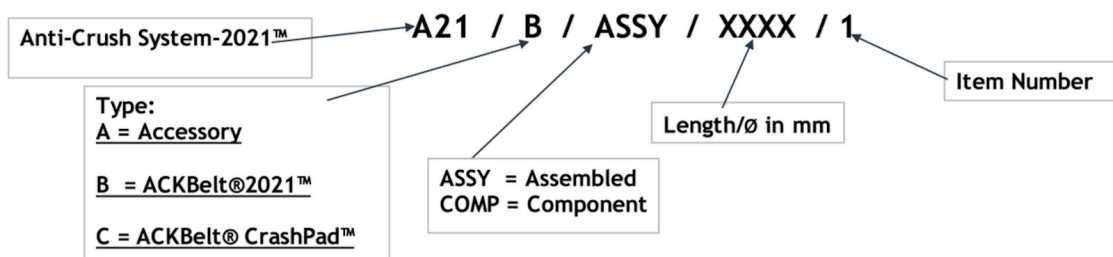


ACKBelt® Components

Weston Handling Ltd ACKBelt®-2021™ Parts List April 2023

ITEM	QUANTITY PER ASSEMBLY	PART NUMBER	ITEM NAME	HAS AN ALTERNATIVE? Y/N	ALTERNATIVE PART NUMBER	ITEM DESCRIPTION
1	1	A21/B/ASSY/XXXX/1	ACKBelt® ASSEMBLY	N	N	Fully assembled ACKBelt®, ready to fit.
2	1	A21/B/COMP/XXXX/2	ACKBelt® Tube	N	N	Continuous Flexible Switch (Normally Open). Indicates impact when closed **See Note 1
3	1	A21/B/COMP/----/3	ACKBelt® End Cap - Blank	N	N	Push Fit Blank End-Cap fastens, to the ACKBelt® & secures the ACKBelt to the truck.
4	1	A21/B/COMP/----/4	ACKBelt® End Cap - with Connector Pins	N	N	As Blank End-Cap, but with 2 wired Electrical Connector pins + approx' 1.5M of Cable
5	1	A21/B/COMP/xxxx/5	Adhesive backed HD Velcro® Tape	Y	A21/B/COMP/----/24	A high performance 2-piece quick-mounting tape affixed to the back of the ACKBelt®
6	2	A21/A/COMP/xxxx/6	Corner Sensitivity Suppressor	N	N	Used on tight bends to prevent ACKBelt® from Activating without external force
7	2	A21/A/COMP/----/7	ACKSpring™ Deflector	N	N	Protects the ends of ACKBelt® and the End-Caps from head-on impact.
8	2	A21/B/COMP/----/8	ACKBelt® Fixing Kit	N	N	Fixing Screws, Degreaser Wipe & Tool for affixing End Caps to a solid surface
9	1	A21/A/COMP/----/9	Timer Relay	N	N	Use to link to Truck electrical circuit & connect ancillaries such as Alarm, Telematics, etc.
10	1	A21/A/ASSY/----/10	ACKBelt® Breaker Switch Box	N	N	Momentary NC push button wired in series with ACKSwitch. See ***Note 2.
11	1	A21/A/ASSY/----/11	ACKAlarm™ -Mini	Y	A21/A/COMP/----/21	Alarm Box with self-powered Sounder & Flashing LED's and Telematic Alert output
12	1	A21/A/COMP/----/12	ACKAlarm™ -Mini Mounting Bracket	N	N	ACKAlarm™ - Mini, Bracket with Magnets and screw holes for mounting.
13	1	A21/A/ASSY/----/13	ACKAlarm™ -Mini & Mounting Bracket	N	N	ACKAlarm™ - Mini and Bracket Assembly
14	1	A21/A/COMP/----/14	ACKBelt®-2021™ Repair Kit	N	N	Kit including conductive tape, repair tool, hole punch and fixing screws.
15	1	A21/A/COMP/----/15	ACKBelt®-2021™ Repair Tool	N	N	Patent Pending, purpose designed Repair Tool for fitting repair screws.
16	1	A21/A/COMP/----/16	Hole Punches	N	N	Hole Punches for assembling or repairing ACKBelt's. Choose 3mmø, 5mmø or 6mmø.
17	1	A21/A/COMP/----/17	Alcohol Wipes	N	N	Used to degrease mounting surface prior to fitting ACKBelt® with the adhesive tape
18	1	A21/B/COMP/----/18	ACKBelt® Identity label	N	N	ACKBelt® Identity label with QR Code access to WH website.
19	2	A21/B/COMP/----/19	ACKBelt® Warning label	N	N	One or more labels are fitted to inform operators that an ACKBelt® is fitted.
20	1	A21/A/COMP/----/20	ACKAlarm™ -Custom	Y	A21/A/COMP/----/11	Larger ACKAlarm™ with =110dBa Klaxon, Flasing Beacon, 12V Battery & Charger
21	1	A21/C/ASSY/----/21	ACKBelt® - CrashPad™	N	N	ACKBelt® CrashPad™ Complete Assembly
22	1	A21/B/COMP/----/22	ACKBelt® 2-Core Connection Wire	N	N	Electrical wiring to connect the ACKBelt® Connector to the Truck or ACKAlarm™
23	1	A21/B/COMP/----/23	ACKBelt® Brass Connector Plugs	N	N	Electrical wiring to connect the ACKBelt® Connector to the Truck or ACKAlarm™
24	1	A21/B/COMP/----/24	Adhesive Backed Flexible Magnet	N	A21/B/COMP/----/5	Adhesive Backed Magnet for affixing to back of ACKBelt® for quick mounting to Ferrous metal.
25	5+	A21/B/COMP/----/25	Eyelet and Washer	N	N	Eyelets and Washers for reinforcing punched mounting holes.

KEY



** Note 1: The ACKTube™ will be Ca. 50mm shorter, (and therefore, the active length of an ACKBelt Assembly will be Ca. 70mm shorter), than the overall length of the assembled ACKBelt with ACKConnector™ inserted.

*** Note 2: A NC push button wired in series with ACKSwitch, for when the ACKBelt is struck and held closed, thereby keeping the Anti-Crush Circuit active. Pushing the button momentarily breaks the circuit, allowing the truck to be moved.

Disclaimer:

Weston Handling's policy of continuous improvement has led to world class innovations. However this means that styles and properties may change over time and we reserve the right to change or substitute any specification without notice.

Transferring Technology... ACKBelt's for All!

ACKBelt® Anti-Crush AND Accident Reporting for Industrial Trucks!

When an Operator crashes a truck, tell **EVERYONE!**

Easy mounting alert system. Independent of the truck, or object it is mounted to. Fits in seconds!

The ACKAlarm™ System comes in a variety of formats, to suit many applications. From a simple Beacon and/or Klaxon alert system, independent of the truck's electrical system, to a fully integrated safety system with Telematic reporting of an activation.

Ask for details! (MOQ's may apply)

Features:

Mounts by magnet or fixed bracket

IP65 Waterproof

90db siren

Alert Flashing Lights

Long-life Battery

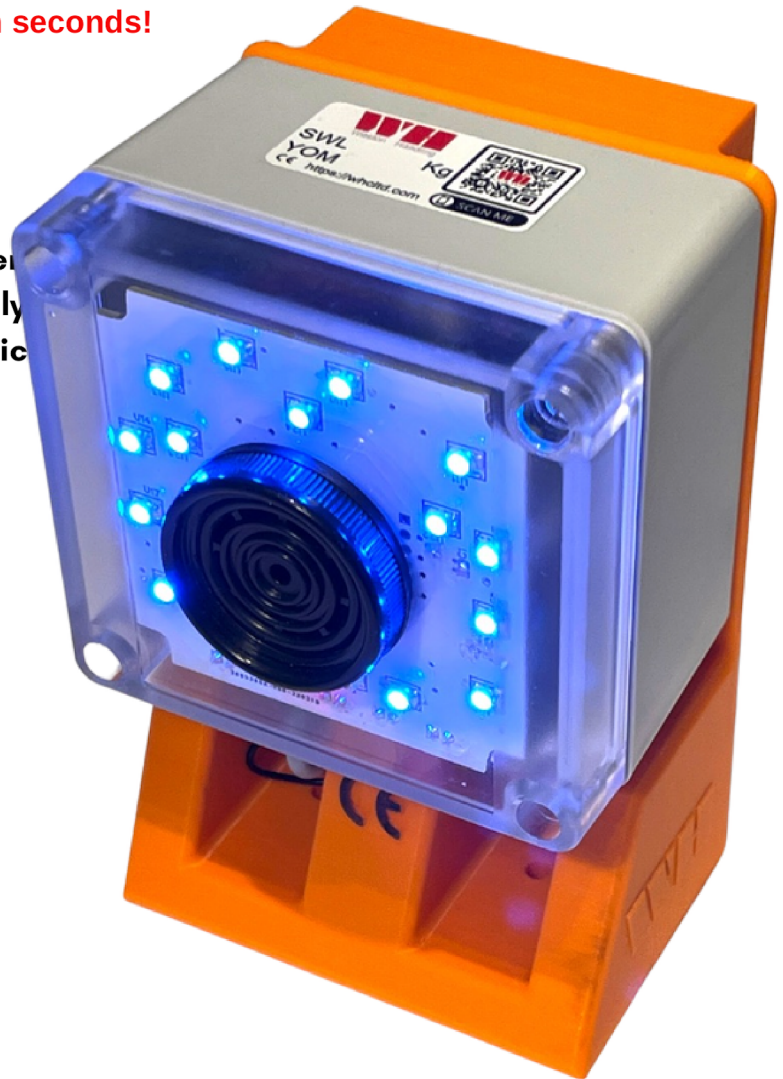
Plug & Play Connection

Ability to add secondary siren/alert light

Easy to mount/remove

Bluetooth configurator (Optional)

Compact size (130 x 85 x 75mm)



Heavy Duty version Available

A NEW ERA in Anti-Crush Systems

Copyright© W. S. Weston 2023, All rights reserved.

Transferring Technology... ACKBelt's for All!

ACKBelt® Anti-Crush Systems For Aerial Work Platforms...



Forward movement of either or both 'Angel Wings' triggers the ACKBelt®



The **A-R-C-Angel™** (**A**nti-**R**ear-**C**rush-**A**ngel™) is probably the only system in the world designed to protect operators of MEWP's **BEFORE** they are struck, by utilising a lift up protective 'shield' that pivots to activate an ACKBelt® mounted on the guardrail.

The MEWP can be operated with the **A-R-C-Angel™** shield in the up position when travelling, or in the down position when close manoeuvring or working over the guard-rail.

The **ACKBelt®-2021™** can be connected directly to the MEWP's control system, or can be supplied with an independently powered **ACKAlarm™**.



The **ACKBelt®-CrashPad™** is ideal for protecting Scissor-Lift and MEWP Tractor units.

A NEW ERA in Anti-Crush Systems

Copyright© W. S. Weston 2023, All rights reserved.



ACKBelt® Physical Characteristics

- Colour.....Black/Yellow
- 'ACKBelt®-2021™ Section Profile dimensions (nominal).....L x 60w x 13-16h mm
- ACKBelt®-2021™ Switch configuration.....Normally Open (NO)
- ACKBelt®-2021™ recommended Voltage & Current.....9-28V DC, 1A Max
- ACKBelt®-2021™ Weight/Metre (nominal).....0.7Kg
- ACKSwitch Ingress Protection Rating.....IP20-64
- ACKBelt Actuation Force Required.....Ca. 4-14Kg
- Minimum ACKBelt Length (without ACKMount™ End Caps).....80mm
- Maximum ACKBelt Length (without ACKMount™ End Caps).....10Metres
- Compression before actuation (No additional cushioning).....<6mm

Materials:

ACKBelt® profile material is Neoprene Rubber, but could vary and may include elastomers such as, EPDM, SBR, PU, etc. Cover tape is Vinyl PVC.

While every effort has been made to ensure the accuracy of the information provided, no liability can be taken for any errors or omission.

Weston Handling Ltd reserves the right to alter specifications and introduce improvements without prior notice.

Copyright:

The information contained within this document from Weston Handling Ltd, t/a Weston Handling & WH, is copyrighted, Copyright© 2019-2023 and is the property of W.S. Weston. All rights reserved.

Tel:

UK & Europe: +44 (0)7917 864802

USA & Americas: +1 (321) 445 5811

EMail: enquiriesewhcltd.com

Web: <https://whcltd.com>

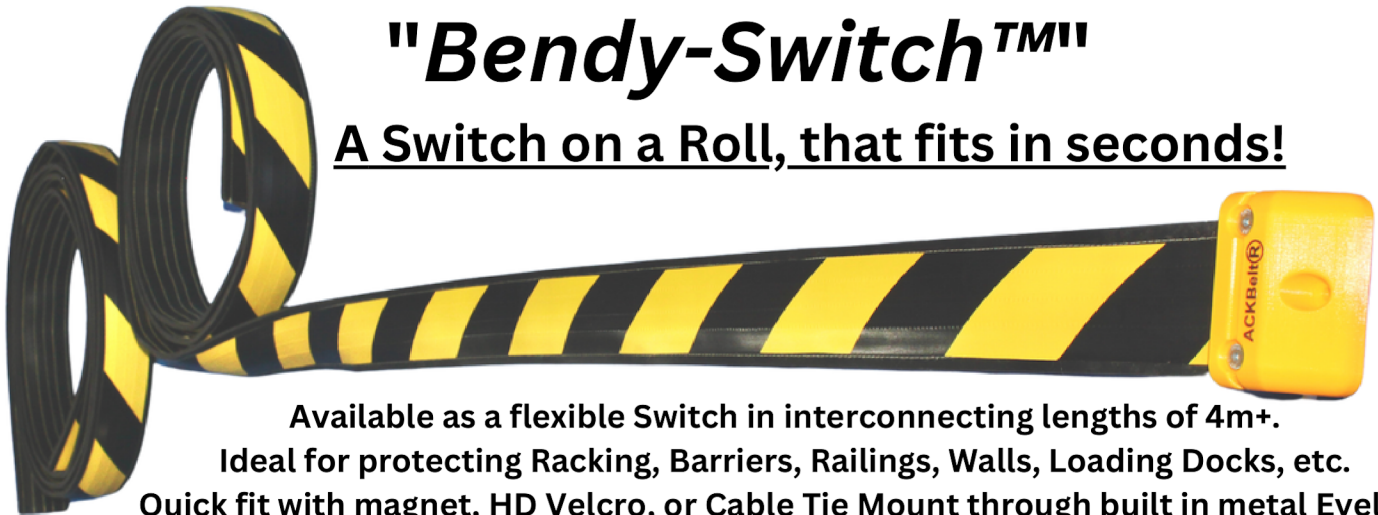


Introduced in 2023...

Improve Warehouse Safety with...

"Bendy-Switch™"

A Switch on a Roll, that fits in seconds!



Available as a flexible Switch in interconnecting lengths of 4m+.

Ideal for protecting Racking, Barriers, Railings, Walls, Loading Docks, etc.

Quick fit with magnet, HD Velcro, or Cable Tie Mount through built in metal Eyelets.

It's the future of Warehouse Safety!

NEW for 2023:

The Low-Profile "Bendy-Switch™" with battery powered alarms, is ideal as a CRASH-ALERT Stand-alone Alarm System...



Weston Handling Ltd

Registered in England: No. 12228905. VAT No: 337824873 EORI No. GB 3378248730000

Copyright© 2023 of W. S. Weston . All rights reserved

t: +44 (0) 7917 864802. e-mail: safety@anticrush.com <https://whcltd.com>

Global Sales, Local Servicing!

WH
Weston Handling

Export Approved

- Headquarters
- Roll Handling Customer
- Service Partner
- Distributor

Reel Handling, Roll Handling, Safe Handling.....it's what we do!

We supply materials handling equipment worldwide. But our aim is to also support YOU, locally. Wherever YOU are! How? By working closely with your own, local, trusted service providers who already know and understand you trucks. AND, we welcome new distributors, anywhere!

Our aim is to work with customers and their preferred service providers to form a partnership. Offering training to service providers such as Fork Lift Service Companies, in how to best utilise and fit ACKBelts, as well as working with OEM's to integrate ACKBelt's into their own Telematic reporting & control systems.

Are you interested in becoming an ACKBelt® partner? Then Email us at, safety@anticrush.com



Consistently Innovative, Industry Recognised



Contact Us



**Fork Lift Truck
Association**

finalist

for

Innovation

&

Safety



**Fork Lift Truck
Association**

finalist

for

Innovation

Weston Handling Ltd
Registered in England: No. 12228905.
VAT No: 337824873

t: +44 (0) 7917 864802

Email: safety@anticrush.com Web: <https://whcltd.com>



Copyright:

The information contained within this document from Weston Handling Ltd, t/a Weston Handling & WH, is copyrighted, Copyright© 2019-2023 and is the property of W.S. Weston. All rights reserved.