

# RhapsodyGuru

**IBM Rhapsody Developer  
Trial Installation and Setup**

# Contents

- Chapter 1. Preparing your Computer to get started with Rhapsody..... 1**
- Chapter 2. Check System Requirements..... 2**
- Chapter 3. Download Rhapsody Trial Version..... 3**
  - IBM developerWorks.....3
- Chapter 4. Rhapsody Installation.....5**
  - Extract compressed Installation package and launch Install..... 5
  - Select Rhapsody Edition and Programming Languages..... 6
  - Define destination of Installation Folder..... 8
  - Check Development Environment Paths..... 8
  - Select Rhapsody Features and Tool Add-Ons..... 9
  - Setup License System.....11
  - Launch installation process.....11
- Chapter 5. Rhapsody Build and Execution Environment..... 13**
  - Add Build Environment.....13
  - Build the Execution Environment..... 14

# Chapter 1. Preparing your Computer to get started with Rhapsody

To prepare your computer to get started with IBM Rhapsody we will go through the following steps:

1. Check System Requirements
2. Download Rhapsody Installation and License File from *IBM developerWorks*
3. Install Rhapsody
4. Download and build *Rhapsody Execution Environment*

# Chapter 2. Check System Requirements

System requirements for IBM Rhapsody 9.0 on Windows

## **Operating System**

- Windows 10 Enterprise, Pro or Standard on x86-32 or x86-64 Hardware
- Windows 8.1 Enterprise, Professional or Standard on x86-32 or x86-64 Hardware
- Windows 7 Enterprise, Professional or Ultimate on x86-32 or x86-64 Hardware

## **Hardware**

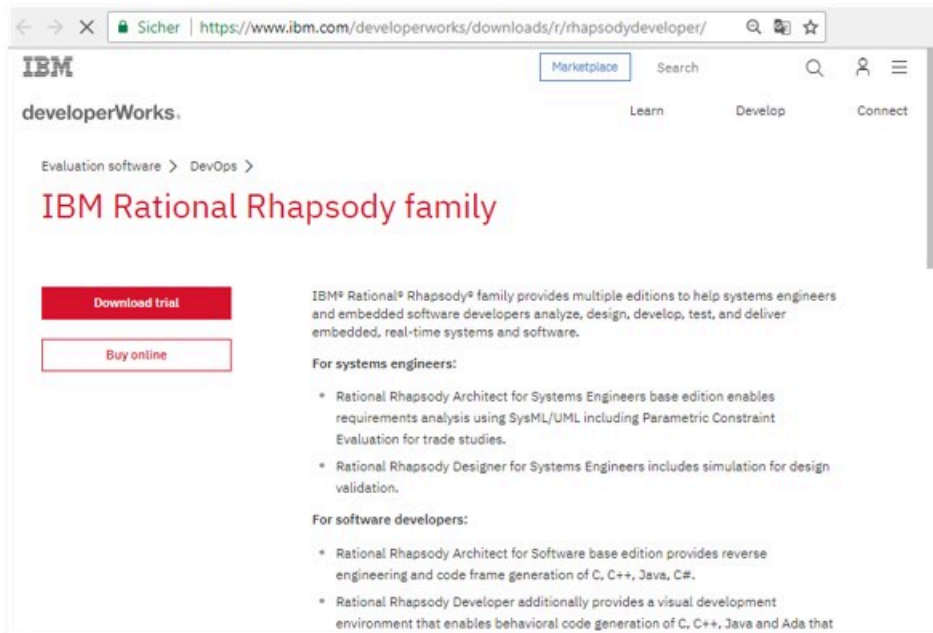
- Disk Space 1.6 GB (One language), 2.3 GB full installation 1 GB Installation temporary disk space
- Memory: minimum Rhapsody for Windows 32 Bit: Minimum 4 GB, Recommended up to 32 GB for large models
- Processor: Pentium 4, 3.00 GHz

# Chapter 3. Download Rhapsody Trial Version

## IBM developerWorks

The Rhapsody Trial Version is available in for registered users in *IBM developer Works*

1. Go to the Rhapsody *developerWorks* under <http://www.ibm.com/developerworks/downloads/r/rhapsodydeveloper/>



2. Select **Download trial**

**Note:** The "Rhapsody Trial" Version is a Full Featured Rhapsody Installation - Only the license is time constrained (currently up to 90 days).

3. Do one of the following:

- If you do not have an IBM id the click **Continue** button to create an new IBM id by using your email address. Then sign in and proceed to your download.
- If you have already an IBM id then select  **I already have an IBM id.** and press **Continue** to login with your IBM id to proceed to your download.

**Note:** The IBM id is your Email Address that you used for registration

4. Make sure that you download at least the following components

- IBM Engineering Systems Design Rhapsody V9.0 Evaluation for Windows 32 Bit Multilingual
- IBM Rhapsody Evaluation Key Multiplatform English

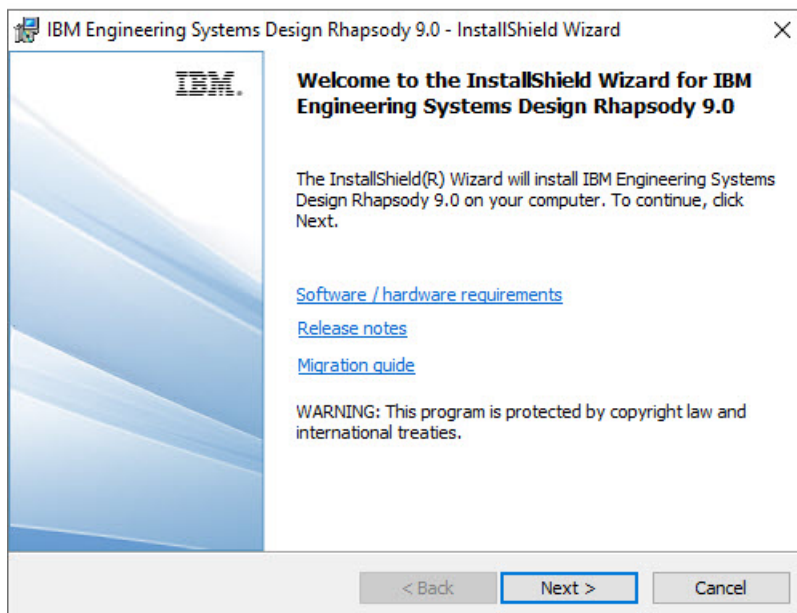
# Chapter 4. Rhapsody Installation

## Extract compressed Installation package and launch Install

Rhapsody contains different editions and is available for different programming languages

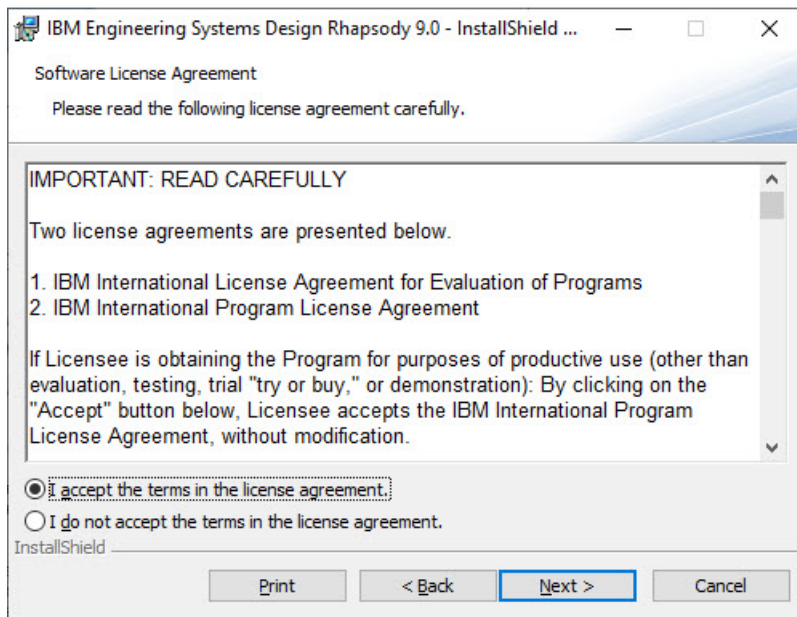
1. Locate the Rhapsody installation Zip-File in your `/Download` directory
2. Extract the zip File in a `/temp` folder
3. Double click on `setup.exe`

The **InstallShield** Wizard appears



4. Press **Next>**

**Software License Agreement** appears




5. Read and accept the license and evaluation agreement then press **Next>**  
Rhapsody **Choose Edition** Window appears

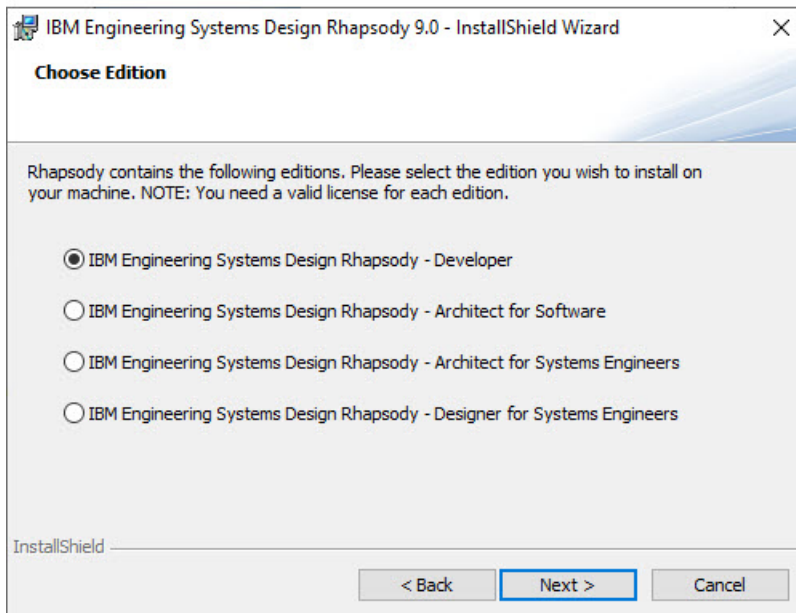
## Select Rhapsody Edition and Programming Languages

Rhapsody contains several different editions for different purposes. In the following task we will setup the required edition

1. In the Rhapsody **Choose Edition** Window select **IBM Engineering Systems Design Rhapsody - Developer**

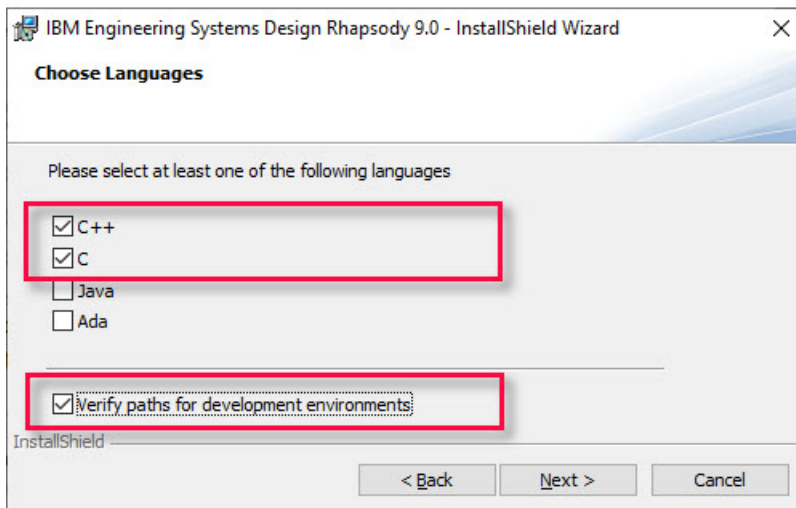
 **Note:** By selecting this option all other edition underneath will be available and accessible after the installation





2. Press Next>

The **Choose Language** Window will appear



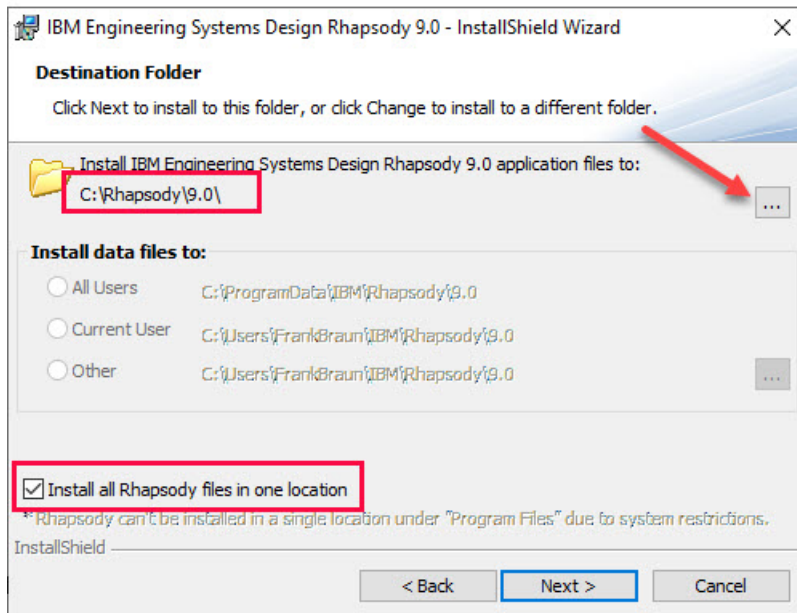
3. Select C and C++ as programming language and check *Development environment and RTOS setting* then press **Next>**

The **Destination Folder** Window will appear

## Define destination of Installation Folder

In this Task we define the Rhapsody installation folder For the evaluation purpose its sufficient to install all Rhapsody components in a central root directory.

1. Press **Change...** and set the installation folder to `C:\Rhapsody\9.0\`
2. Check **Install all Rhapsody files in one location**



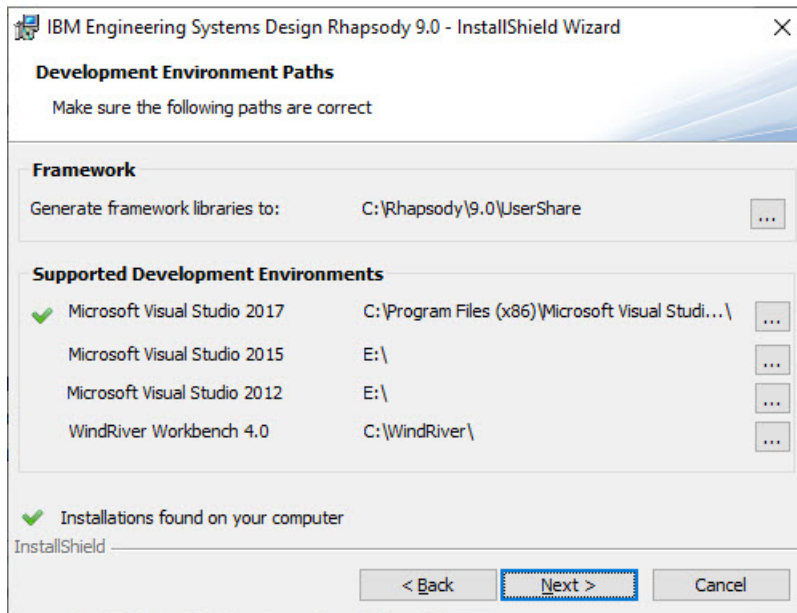
**Note:** The option **Install all Rhapsody files in one location** will store all Rhapsody specific files underneath the installation folder.

3. Press **Next>**  
The **Development Environment Path** Window will appear

## Check Development Environment Paths

In this Task we check if the found paths are correct

1. Make sure that the found paths are correct



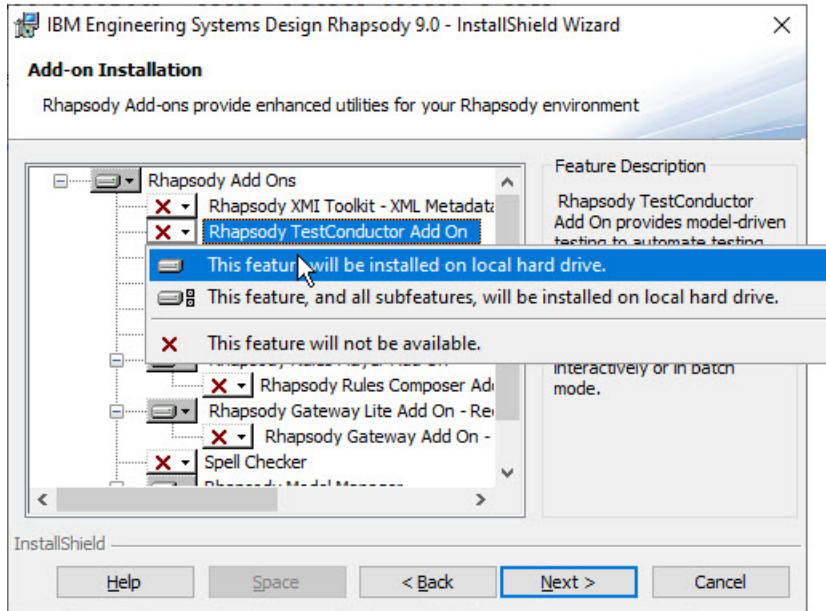
2. Press **Next>**

The **Add-on Installation** Window will appear

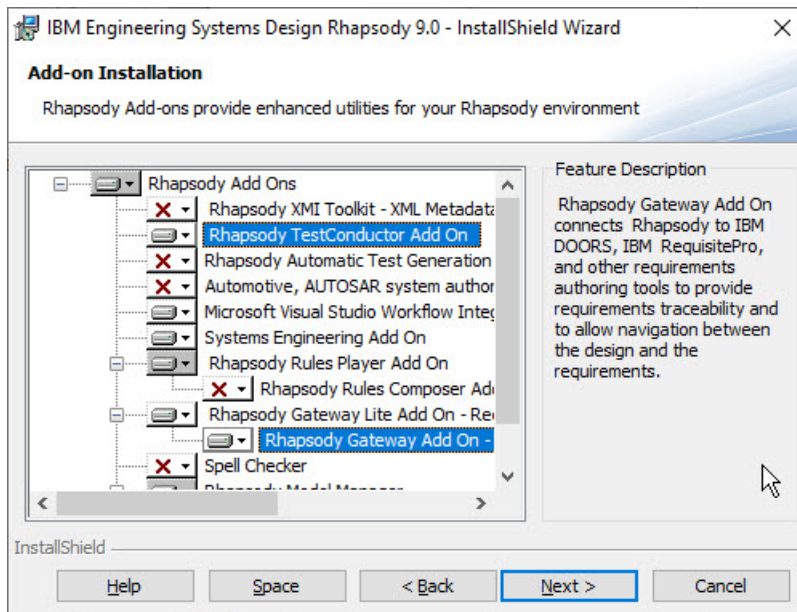
## Select Rhapsody Features and Tool Add-Ons

Rhapsody has a set of supplementary Tools and Features which can be added in this section

1. In the Add-On Feature Selection right click **Rhapsody TestConductor** and select **This feature will be installed locally on hard drive**



2. Repeat step1 for **Rhapsody Gateway AddOn**



**Note:** Please make sure that **TestConductor** , **Gateway Add On** are selected. We're using these Add-Ons during the Getting started tour.

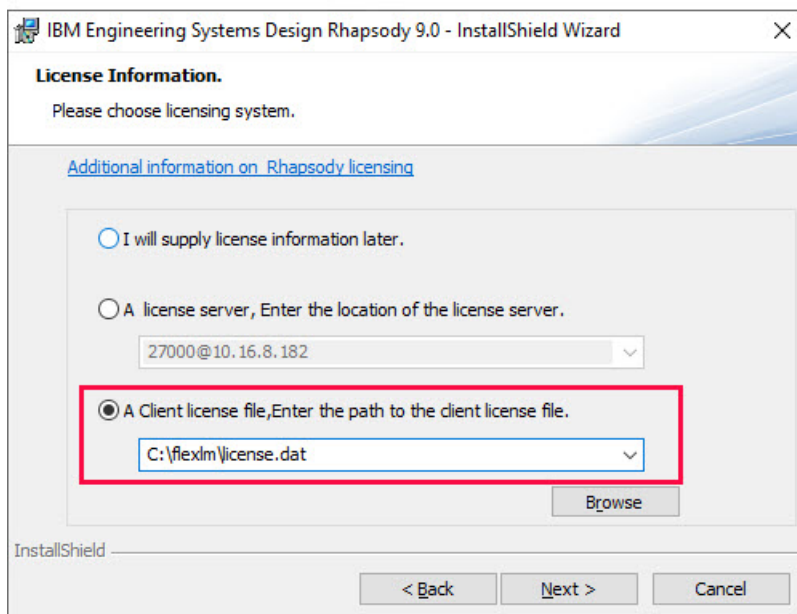
3. Press **Next>**

The **License Information** window will appear

## Setup License System

In the License Information window we will setup the licensing system. Per default IBM Rhapsody expects the Client License File to be located under `c:\flexlm\`. In the following task we will create such a folder and place our Evaluation license that we have downloaded from developerWorks.

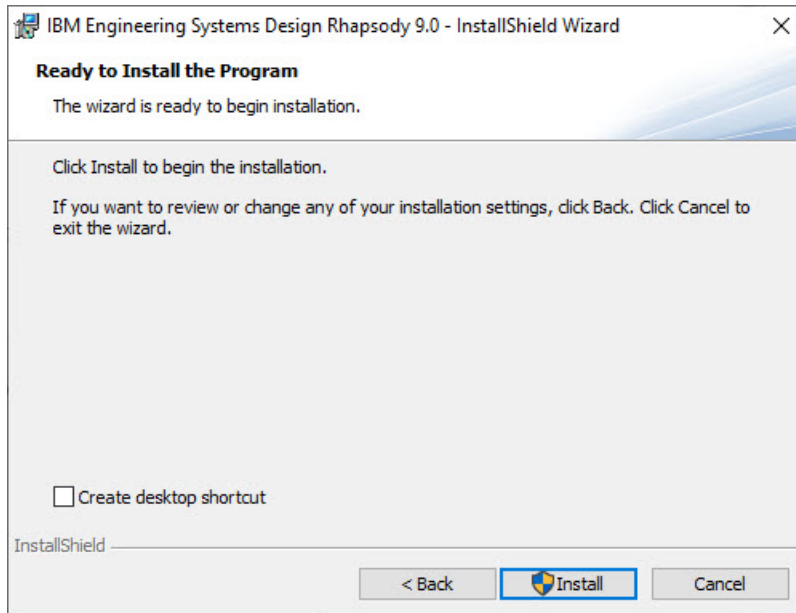
1. Create a folder `C:\flexlm`
2. Move the Rhapsody evaluation license file into this folder
3. In the **License Information** Window select **A Client license file**:




4. Use **Browse** to select the license file
5. Press **Next>**  
The **Ready to Install** Window will appear.

## Launch installation process

Press **Install** to launch the installation process



 **Note:** Press **Finish** when done, but do not yet start Rhapsody.

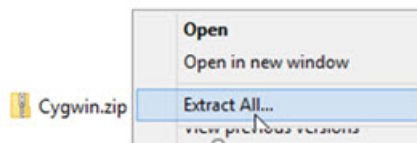
# Chapter 5. Rhapsody Build and Execution Environment

In order to build (compile) and run our models, a build and execution environment is required. As a build environment we're going to use the CYGWIN compiler. As execution environment we use the Rhapsody Object Execution Framework (OXF) that we need to compile with the same compiler.

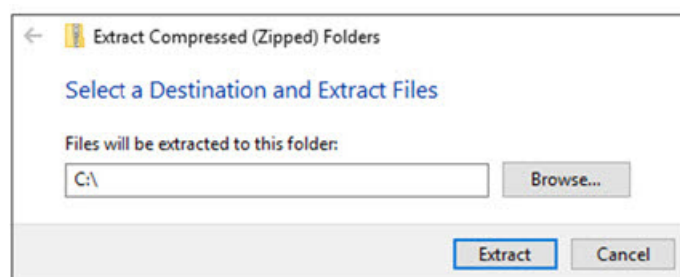
## Add Build Environment

As Build environment we will use the CYGWIN compiler. To skip the installation and save the time, a pre-composed zip file is provided to you that contains all Files.

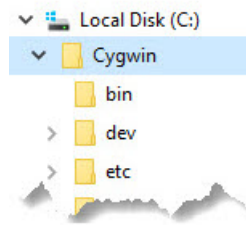
1. Download the Files [cygwin.zip](#) which contains the Cygwin environment from [www.Rhapsody.Guru](#)
2. Right Click on the Zip-File and select **Extract All**




3. Use **Browse** to select the `C:\` root directory



4. Press **Extract**
5. Make sure that your browser structure is similar to the following :




 **Note:** If you prefer an individual / more complete *Cygwin* installation you can also follow the *Cygwin* Installation from scratch at the following link: <https://de.slideshare.net/FrankBraun5/installing-cygwin-for-ibm-rational-rhapsody>

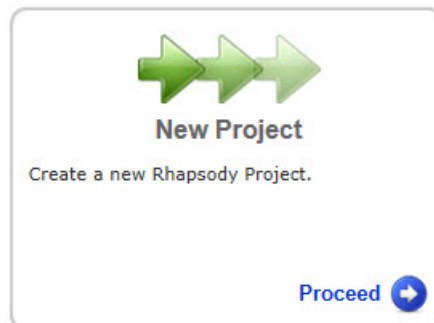
## Build the Execution Environment

To archive executable models and build complete application out of our model, we are using the OXF which need to be build upfront:

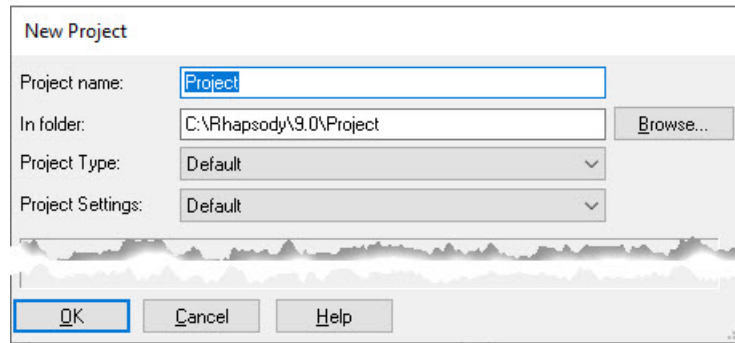
1. Launch Rhapsody **Start > Programs > IBM Engineering Systems Design Rhapsody > Rhapsody 9.0 Developer** in C++ or C.

 **CAUTION:** Whether you launch *Rhapsody in C* or *Rhapsody in C++* depends on the programming language you intend to use during the training / in your project.

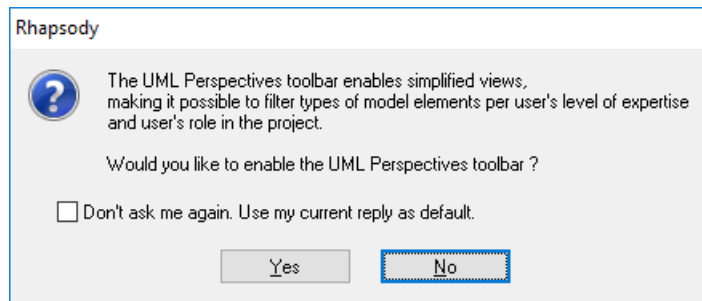
2. Select **New Project** to create a new project





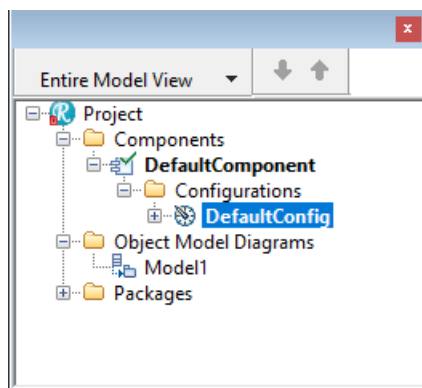


3. Keep all defaults and press **OK**>

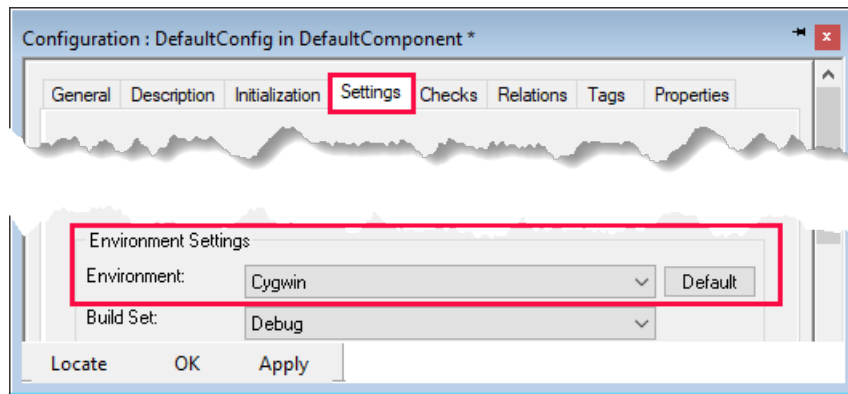


4. Press **No**>, when you're asked to enable *Perspectives*

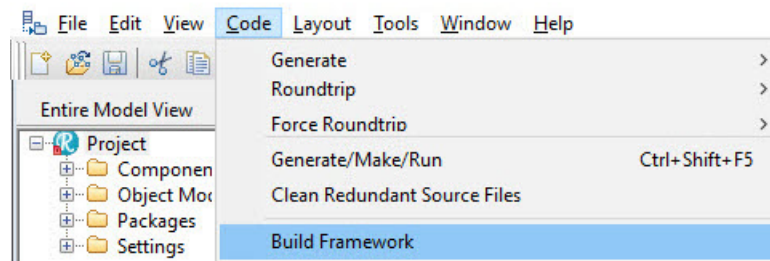
5. In Rhapsody Browser expand the *Components* Category and double click on *DefaultConfig* to open its **Feature Dialog**



6. Go to the **Settings** Tab and select *Cygwin* in the *Environment Settings*



7. Select **Code>Build Framework**



8. Wait until you see the **Build Done** in the output window

