



Lignum Consulting GmbH
Am Wasserturm 23
74635 Kupferzell
Germany
Fon +49 7944 941970
info@lignum-consulting.de
www.lignum-consulting.com

Lignum Consulting Inc.
1135 Kildaire Farm Road, STE 200
Cary, NC 27511
USA
Fon +1 919 415 4242
info@lignum-consulting.com
www.lignum-consulting.com

Lignum Consulting Corp.
10 Deerlick Court, Suite 305
Toronto, ON
Canada
Fon +1 416 707 8776
info@lignum-consulting.com
www.lignum-consulting.com

Lignum Consulting Ltda.
Av. Argolo, 4; Sala 31
89280-061 São Bento do Sul, Santa Catarina
Brazil
Fon +55 47 99966 6999
lignum@lignum-consulting.com.br
www.lignum-consulting.com.br

WE BUILD SUCCESS

Lignum Consulting

Lignum Consulting
WE BUILD SUCCESS

*CONSULTING AND ENGINEERING FOR THE INTERNATIONAL
WOOD AND FURNITURE INDUSTRY*



WELCOME TO *LIGNUM CONSULTING*

WE HELP YOU MEET THE CHALLENGES OF THE WOOD AND FURNITURE INDUSTRY **NEUTRAL & INDEPENDENT**

*Welcome to Lignum Consulting, your consultants for the-
wood and furniture industry.*

Headquartered in Kupferzell, Germany and together with our subsidiaries in the USA, Canada and Brazil, we are helping to shape the future of the international wood and furniture industry. Our excellent strategists and practical experts approach your unique challenges with passion, strategy, in a practical way and always with utmost confidentiality.

With over 400 national and international companies already benefiting from our expertise and experience, we work completely neutrally and independently. Our consulting and engineering methods form a perfect symbiosis.

We look forward to hearing from you.



WORKING FOR YOUR SUCCESS

Pascal Inauen

Senior Consultant

Cabinetmaker
B.Sc. in Wood Technology



Manuel Reinhardt

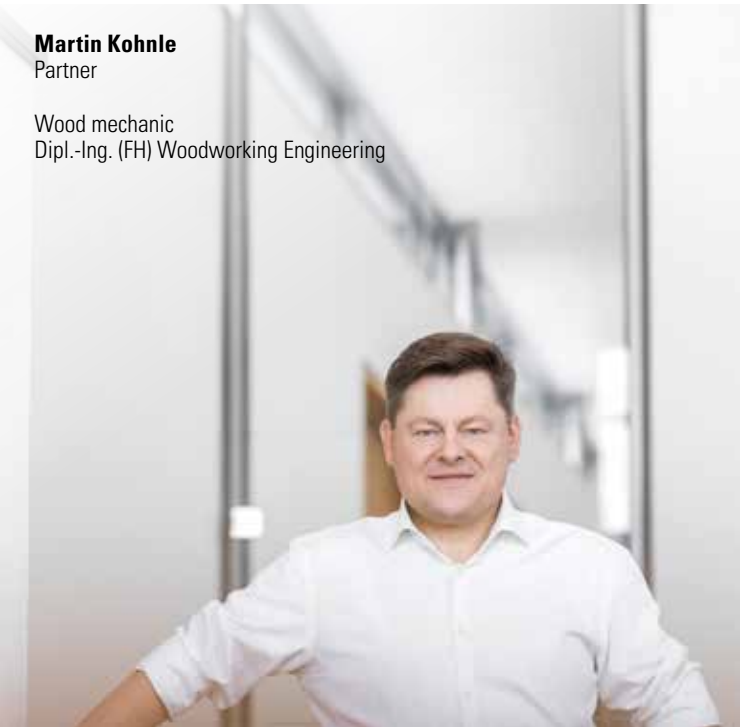
Senior Consultant

Cabinetmaker
(German Master Craftsman 2005)
Dipl.-Ing. (FH) Woodworking Engineering
MBA



Georg Frey
CEO (USA)

Cabinetmaker
Dipl.-Ing. (FH) Wood-
working Engineering
MBA



Martin Kohnle
Partner

Wood mechanic
Dipl.-Ing. (FH) Woodworking Engineering



Dieter Rezbach
Managing Partner

Cabinetmaker
Dipl.-Ing. (FH) Woodworking Engineering
Dipl.-Wirt. Ing. (FH) Industrial Engineering
Senator of Economy Germany
MBA



Michelle Wolf
Consultant

Cabinetmaker
B.Eng. in Woodworking Technology



Christoph Unger
Senior Manager

Cabinetmaker
Dipl.-Ing. (BA) Woodworking Engineering



Oliver Barge
CEO (Brazil)

Cabinetmaker
Dipl.-Ing. (FH) Woodworking Engineering

Sepp Gmeiner
CEO (Canada)

Cabinetmaker
Dipl.-Ing. (FH) Woodworking Engineering
Dipl.-Wirt.-Ing. (FH) Industrial Engineering



Tatjana Kühn
Back-Office

Wholesale and Foreign Trade Merchant
International Business Management and
Foreign Languages



Antoine Fabri
Senior Manager

Cabinetmaker
Dipl.-Ing. (FH) Wood-
working Engineering



Prof. Rolf Staiger
Senior Manager

Cabinetmaker
Dipl.-Ing. (FH) Woodworking Engineering



Andreas Landwehr
Senior Manager

Cabinetmaker
Dipl.-Ing. (FH)
Woodworking Engineering



Natascha Schmierer
Back-Office

Management Assistant for Office Communication
Bachelor Professional of Business



Marcel Hinger
Senior Manager

Cabinetmaker
B.Eng. in Wood-
working Technology





Armin Blech
Senior Consultant

Wood mechanic
Certified Engineer
European Industrial Engineer



Marc Wenzl
Senior Manager

Cabinetmaker
Dipl.-Ing. (FH) Engineering for
Architectural Woodwork



Petra Beier
Office Manager

Dipl. in Business
Administration (BA)



Sebastian Mex
Senior Consultant

Cabinetmaker
B.Eng. in Woodworking Technology



Adam Gajecki
Consultant (Poland)

M.Sc. Engineering



Mathieu Schuhmacher
Senior Consultant

Mechatronics Technician
B.Eng. in Woodworking Technology

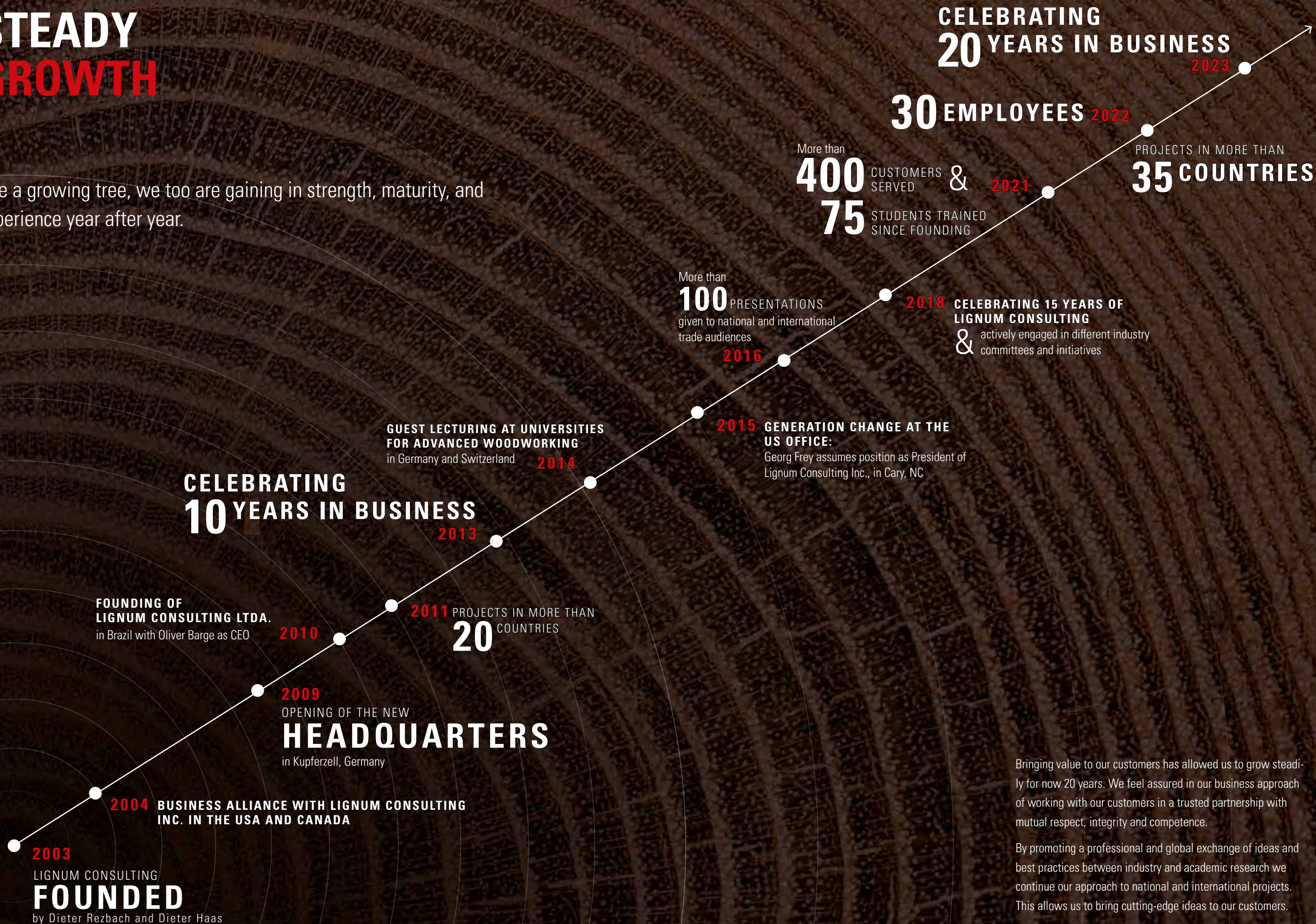


Benjamin Skarke
Senior Consultant

Cabinetmaker
B.Sc. in Interior Engineering

STEADY GROWTH

Like a growing tree, we too are gaining in strength, maturity, and experience year after year.



Bringing value to our customers has allowed us to grow steadily for now 20 years. We feel assured in our business approach of working with our customers in a trusted partnership with mutual respect, integrity and competence.

By promoting a professional and global exchange of ideas and best practices between industry and academic research we continue our approach to national and international projects. This allows us to bring cutting-edge ideas to our customers.

WE ARE AN INDEPENDENT CONSULTING FIRM OUR ONLY CONCERN IS THE SATISFACTION OF OUR CUSTOMERS

Dieter Rezbach, Managing Partner



We work for you – in your best interest.

Lignum Consulting is known for its progressive approach to addressing key issues in the wood and furniture industry. Thinking ahead and anticipating future developments, we offer robust and flexible solutions that we tailor to our customers' needs.

What's crucial to us: neutrality and independence.

Whenever we advise a certain course of action or a product, we do this because we are fully convinced that it is in your best interest. We strongly believe that good consulting requires the consultant to be independent, neutral and unbiased. Equally important is confidentiality, which allows us to gain the trust of our clients – an essential requirement for any successful collaboration.

THE LIGNUM-HELIX – THE OPTIMAL SYMBIOSIS FROM CONSULTING AND ENGINEERING

Two decades of experience in aligning processes and information flow along the value chain, along with our unyielding commitment to achieving the ideal solution for our customers, are embodied in our Lignum-Helix.

In this DNA-like structure, consultancy and engineering intertwine to create an optimal symbiosis.

CONSULTING

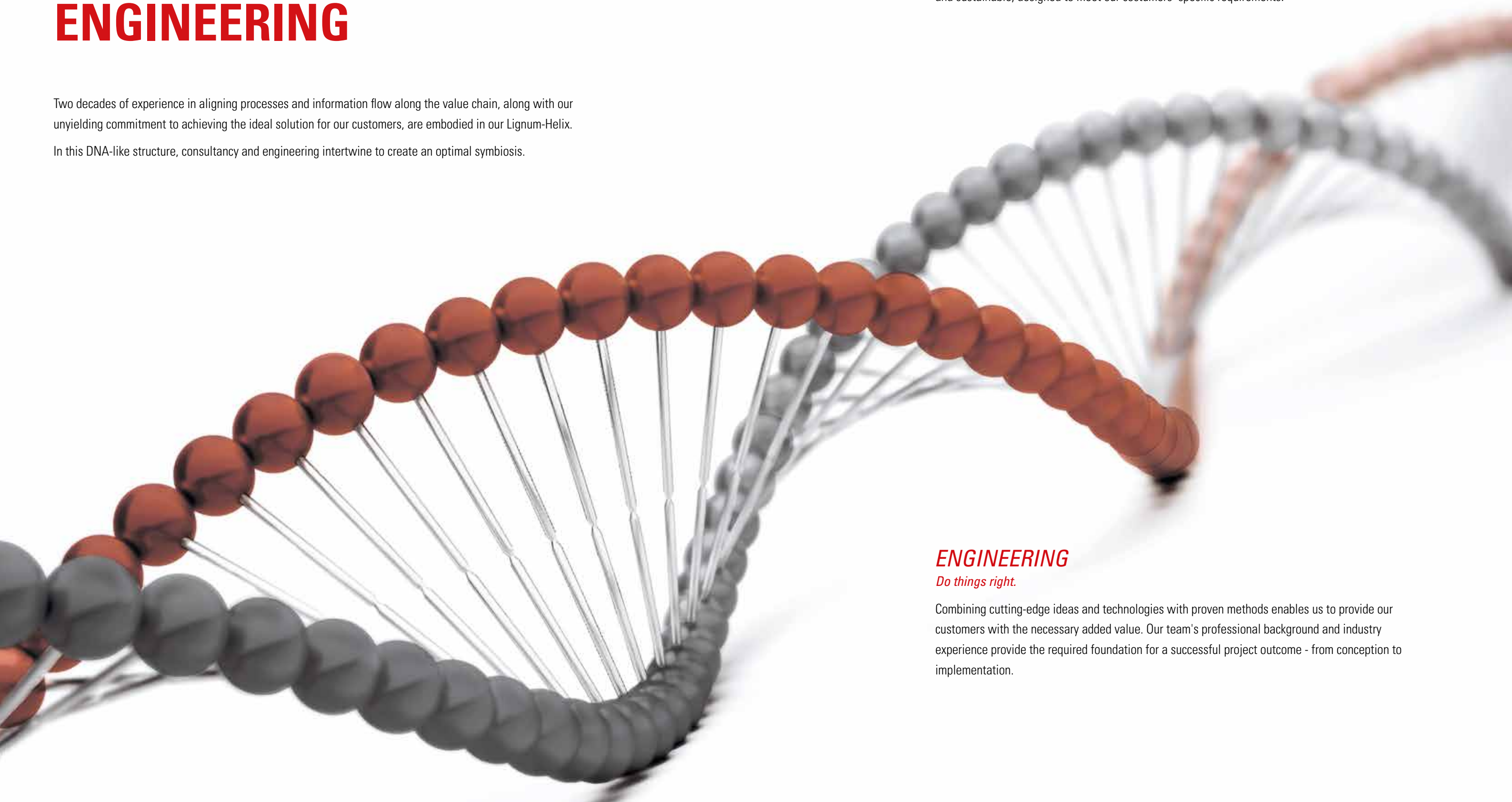
Doing the right things.

Strategic Advisory - we anticipate future trends and think ahead. Our solutions are robust, flexible, and sustainable, designed to meet our customers' specific requirements.

ENGINEERING

Do things right.

Combining cutting-edge ideas and technologies with proven methods enables us to provide our customers with the necessary added value. Our team's professional background and industry experience provide the required foundation for a successful project outcome - from conception to implementation.



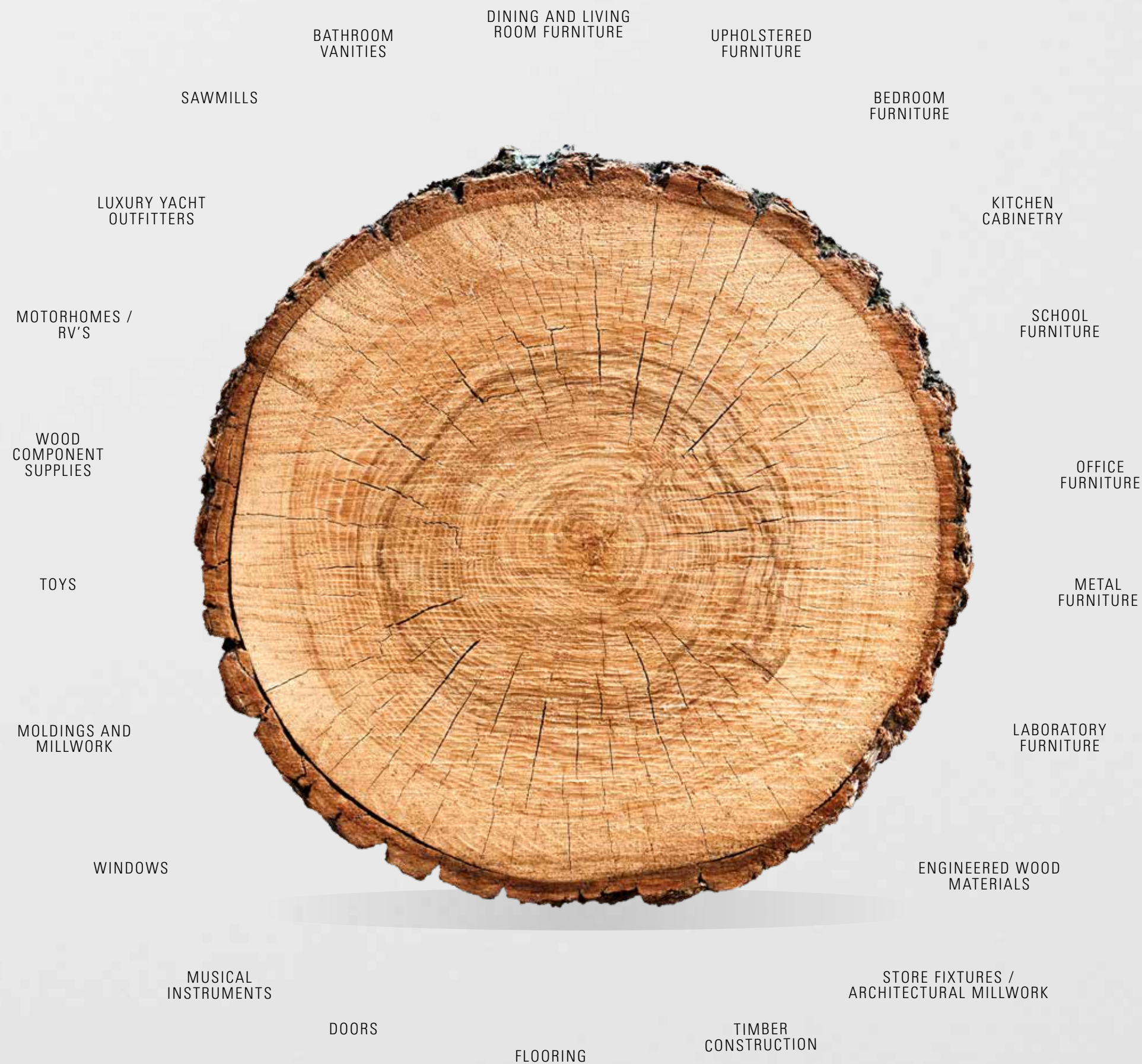
THE WOOD AND FURNITURE INDUSTRY IS WHERE WE BELONG

WE ARE MADE OF THE SAME WOOD

Our claim is your benefit.

The core strength of Lignum Consulting is our profound knowledge of our industry - the key players, the issues, the trends and the people working in it. All our team members are woodworkers by heart with apprenticeships and engineering studies specific to the industry, as well as years of experience in the field. This gives us the advantage of know-how and experience which is unparalleled in consulting in our industry. Putting this know-how to work, we help our customers to master their business challenges – hands on, day by day. Woodworking for us is more than a business – it’s our passion.

EACH PROJECT IS A **FUTURE REFERENCE**

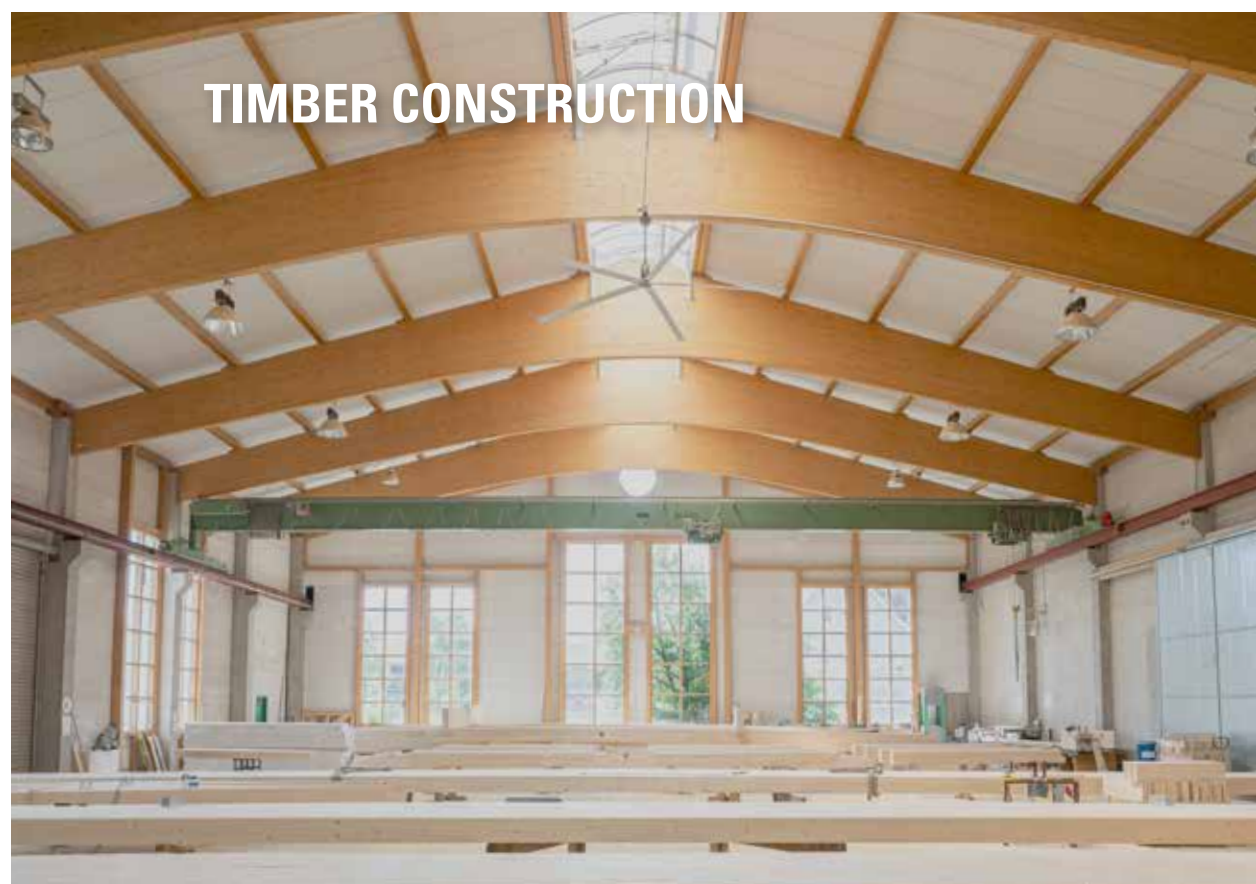


OUR CUSTOMERS

or rather, let's call them long-standing partners, ranging from small, hands-on businesses to internationally positioned industrial companies. All share the same challenge of constantly improving their own businesses to succeed in the market. Our experienced team's mindset and actions are geared towards initiating a continuous improvement process throughout the entire value chain. No matter how large a company is.



SAWMILLS



TIMBER CONSTRUCTION



FURNITURE



MOTORHOMES / RV'S



As consultants, our first priority is to do the right things, and then, as engineers, to do things right.

Marcel Hinger, Senior Manager

***E*⁴ = THE POWER OF EFFICIENCY**

In Pursuit of Efficiency

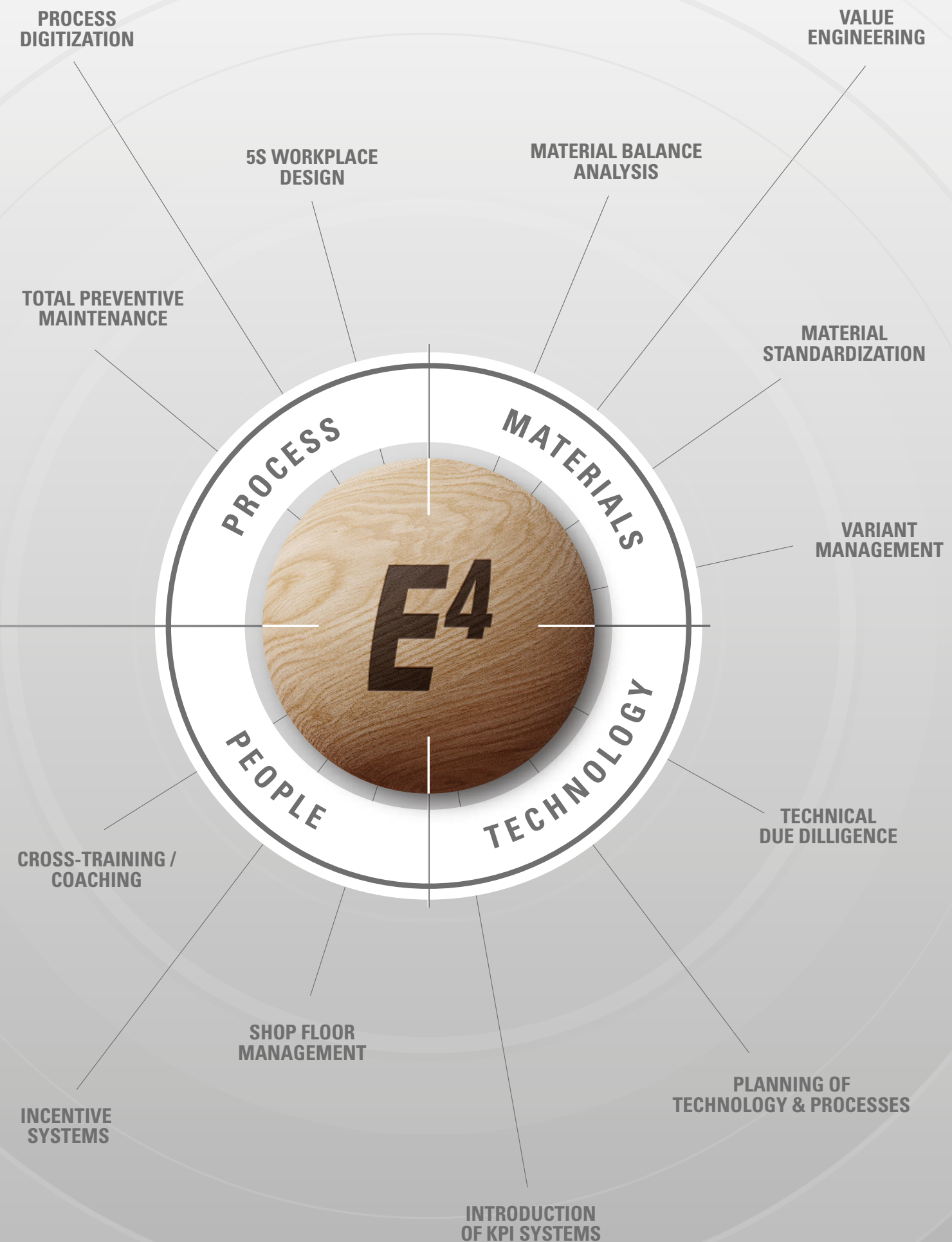
The economic environment of our industry presents us with the challenge of aligning the use of resources as optimally as possible in terms of profitability and sustainability. At Lignum Consulting, we describe the procedure for sustainably increasing efficiency across the four main areas of personnel, material, process and technology:

E⁴ = the power of efficiency – in pursuit of efficiency

The aim is to take a close look at ALL cost-driving factors:

- When it comes to materials, it is important to uncover potential savings and reduce waste.
- Employees should be qualified as specifically as possible and tasks should be automated if necessary become.
- Digitization and "lean production systems" help to make processes more economical.
- Consistently using and optimizing the existing technology also increases efficiency.

The trick is to use the available resources to meet the goals and market requirements to fulfill future.



// MANAGEMENT CONSULTING



// INDUSTRIAL ENGINEERING



// PEOPLE



// PROJECT
MANAGEMENT



// PRODUCT ENGINEERING

// DATA INTEGRATION

// CONTROLLING

WE THINK AND ACT HOLISTICALLY

*As experienced strategists, we always see the big picture.
We therefore cover the entire process chain with our expertise.*

In each field, we examine and honor evolved structures and develop them further with well-founded and innovative concepts – with a view to a continuous improvement process and controllable growth that will take your company safely into the future.

MANAGEMENT CONSULTING

With our experience and in-depth knowledge of methods, we are able to determine the current position of your company. From this, we develop goals and strategies that make your company sustainable and successful.

- Turn-around management
- Future site concepts
- Internationalization
- Production system development
- Technical due diligence



PRODUCT ENGINEERING

70% of production costs are determined in product development. We help you avoid unnecessary complexity and costs from the outset. We also assist with managing complexity and production costs on current product lines.

- Product engineering optimization
- Management of product variants
- Standardization of engineering principles
- Value analysis
- Product data model development



INDUSTRIAL ENGINEERING

Ongoing changes in the market require continuous adaptation and optimization of processes. We always have the big picture in sight and ensure that you take advantage of opportunities. Benefit from our extensive planning experience! We use state-of-the-art digital tools coupled with successfully proven methodology.

- Factory layout and plant design
- Lean Manufacturing implementation
- Process analysis and optimization
- Quality management
- Supply chain optimization / Internal logistics systems
- Total Productive Maintenance (TPM)
- Value Stream Mapping
- Capacity Planning and Production Control



PEOPLE

Qualified and motivated staff are the foundation of your company's success. Let's tap into and develop this potential.

- Coaching
- Workshops
- Staff development
- Recruitment



DATA INTEGRATION

If you want to move quickly, you need a clear view! Information and data flows need to be seamless, integrated, and transparent. Let's network your future together!

- Batch size 1 production
- Concept design of Manufacturing Execution Systems (MES)
- Process data model
- Interface optimization
- Synchronization of Process and Information Flow



CONTROLLING

We create transparency with comprehensive KPIs (Key Performance Indicators) and benchmarks. Any need for corrective action is substantiated, apparent and fact-based.

- KPI systems and benchmarks
- Costing systems / calculation
- Process and performance monitoring



PROJECT MANAGEMENT

We help structure and successfully implement projects. Hand in hand with you, we draw on experience, know-how, social skills, and speed to ensure that the necessary actions are implemented in a timely manner.

- Project Management
- Interim Management
- Crisis Management
- Promoting digitalization





We integrate virtual reality into our work as a tool to help our customers prepare for the future.

Mathieu Schuhmacher, Senior Consultant
Sebastian Mex, Senior Consultant

INSIGHTS INTO OUR DAILY WORK

We foster a collegial environment where we exchange ideas and insights in our modern offices or on-site, all with the goal of serving our customers.



Our goal is to give at least 100% every day to our customers. To achieve this, we have created a modern environment with professional equipment, which allows us to be as flexible as possible to meet each individual customers' needs. This all centers around our mobile workplaces, which allow us to put together dynamic teams that work hard for you.



**Trees get their strength
from their roots.
With our deep roots in
the wood and furniture
industry, we provide
strong solutions
for your business.**

Andreas Landwehr, Senior Manager



*LIGNUM
CONSULTING
CORP.*

10 Deerlick Court, Suite 305
Toronto, ON
Canada
Fon +1 416 707 8776
info@lignum-consulting.com
www.lignum-consulting.com

*LIGNUM
CONSULTING
GMBH*

Am Wasserturm 23
74635 Kupferzell
Germany
Fon +49 7944 941970
info@lignum-consulting.de
www.lignum-consulting.com

*LIGNUM
CONSULTING
INC.*

1135 Kildaire Farm Road, STE 200
Cary, NC 27511
USA
Fon +1 919 415 4242
info@lignum-consulting.com
www.lignum-consulting.com

*LIGNUM
CONSULTING
LTDA.*

Av. Argolo, 4; Sala 31
89280-061 São Bento do Sul
Santa Catarina
Brazil
Fon +55 47 99966 6999
lignum@lignum-consulting.com.br
www.lignum-consulting.com.br

INTERNATIONAL

We are there where you need us.