

On the Green

FINE ART & CRAFT SHOW

September 9 & 10, 2023, 10 am – 5 pm, rain or shine

Hubbard Green, Corner Main & Hubbard St. in Glastonbury

Hubbard Green will be transformed into a bustling marketplace of original fine art and handmade craft.



Original Art & Handmade Craft

A Fun Weekend "On the Green"

Free Admission & Free Parking • Live Music • Poetry Inspired by Art • Food Court

Some of the best artists from across the country will show and sell their work on tree-lined Hubbard Green at the corner of Main and Hubbard Streets in the heart of Glastonbury's historic district. If you are a regular show visitor, you will recognize some of the exhibitors as you walk up and down the shaded aisles. That said, every year, a new group of talented men and women become first-time exhibitors at the annual "On the Green" show.

For your comfort, enjoy **Free Accessible Parking** and a **Food Court** to sustain you during your show visit. Park at Glastonbury High School and take the free shuttle bus to and from the show or park at the Soccer Field on Main Street. Handicap parking is available near the Registration Tent - see the show map on page 3. The Food Court offers a delicious menu of temptations, soft drinks, and bottled water - see the Food Court menu on page 11.

River Bend Book Shop will present an exciting lineup of author and illustrator presentations throughout the weekend - look for them next to the Registration Tent. In addition, River Bend Book Shop, Glastonbury Arts, and the Glastonbury Poet Laureate will present **"Poetry Inspired by Art"** at 3:00 p.m. on Saturday - see page 11.

The show will include the **Glastonbury Arts Members Show and Sale** of framed and unframed originals as well as the **Glastonbury High School Art Exhibition**, featuring artwork from our talented high school students as well as Glastonbury Public Schools art teachers. Look for them near the Glastonbury Historical Society Museum.

Live Music will be provided by **Globe Hollow**, a talented duo, on Saturday and Sunday from 11:00 a.m. to 2:00 p.m. on the Monument plaza - see the show map on page 3. Also at noon and 3:00 p.m. on each day, **Fuller Yoga** will offer **20 minute yogo and light stretching sessions**, - near the Registration Tent.

GLASTONBURY ARTS is a non-profit art organization founded in 1962 and dedicated to engage individuals in the creation and appreciation of art. Our members include full-time

professional artists with established careers, emerging artists, and art students as well as people whose love of art propels them to volunteer their time and energy to make this show and our other art programming possible.

If you can't imagine your life without art, join Glastonbury Arts. If you are already a member, we invite you to volunteer and keep the arts in the forefront of your day!

INSIDE

2023 Exhibitor Listing and Show Map	3
On the Green Show Judges for Awards	4
Sneak Peak, a Sample of the Many Talented Show Exhibitors	6, 7, and 8
Glastonbury High School Exhibition	8
Volunteer and Membership Opportunities	9
2023 Fall Art Classes for Adults, Teens, and Children.....	10
Poetry Inspired by Art	11
Food Court Menu	11
Capital Campaign to Renovate the Glastonbury Arts Center.....	12

Thank you to our 2023 lead sponsors - Chelsea Groton Bank and Gene Langan Volkswagen!

**It's more than just a house or place of business...
It's where you'll make memories and grow your future.** We'll help you meet the right people, get a loan,* and share all you need to know along the way.

*Subject to credit approval.



Connect with our team today!

Home: 860-934-1300 | Chelseagroton.com/homeowner

Business: 860-448-4295 | Chelseagroton.com/growthatbusiness



Chelsea Groton

NMLS ID 402928

ID.4 EV SUV - *More range than your playlist*

Gene Langan Volkswagen
816 New London Turnpike, Glastonbury
www.LanganVW.com

YourArtSupplies.com
 JERRY'S ARTARAMA OF CONNECTICUT
 860.232.0073

BACK TO SCHOOL SALE

**EVERYTHING YOU NEED FOR YOUR SEMESTER
 UP TO 76% OFF LIST!**

1109 New Britain Avenue, West Hartford
 Store Hours: Monday – Saturday, 10 am – 6 pm and Sunday, Noon – 6 pm
 Sale ends September 30, 2023.



Finding inspiration
 is important.

At M&T Bank, we understand how important the arts are to a vibrant community. That's why we offer our time, energy and resources to support artists of all kinds, and encourage others to do the same. [Learn more at mtb.com.](https://www.mtb.com)

M&T Bank is proud to support the Glastonbury Arts & Crafts Show.

Glastonbury Fin. Center
 40 Welles Street
 Glastonbury, CT 06033
 860-633-4606

M&T Bank
 Understanding what's important®

Equal Housing Lender. ©2022 M&T Bank. Member FDIC.

Every sponsorship and advertisement is a statement of community support for the arts. Thank you!



RENEWAL
 by **ANDERSEN**
 FULL-SERVICE WINDOW & DOOR REPLACEMENT

*Sells, installs, and services energy-efficient replacement windows
 resulting in beautiful homes and delighted homeowners.*

Southern New England Windows, LLC

Stop by our booth at the "On the Green" Show – near the Historical Society.

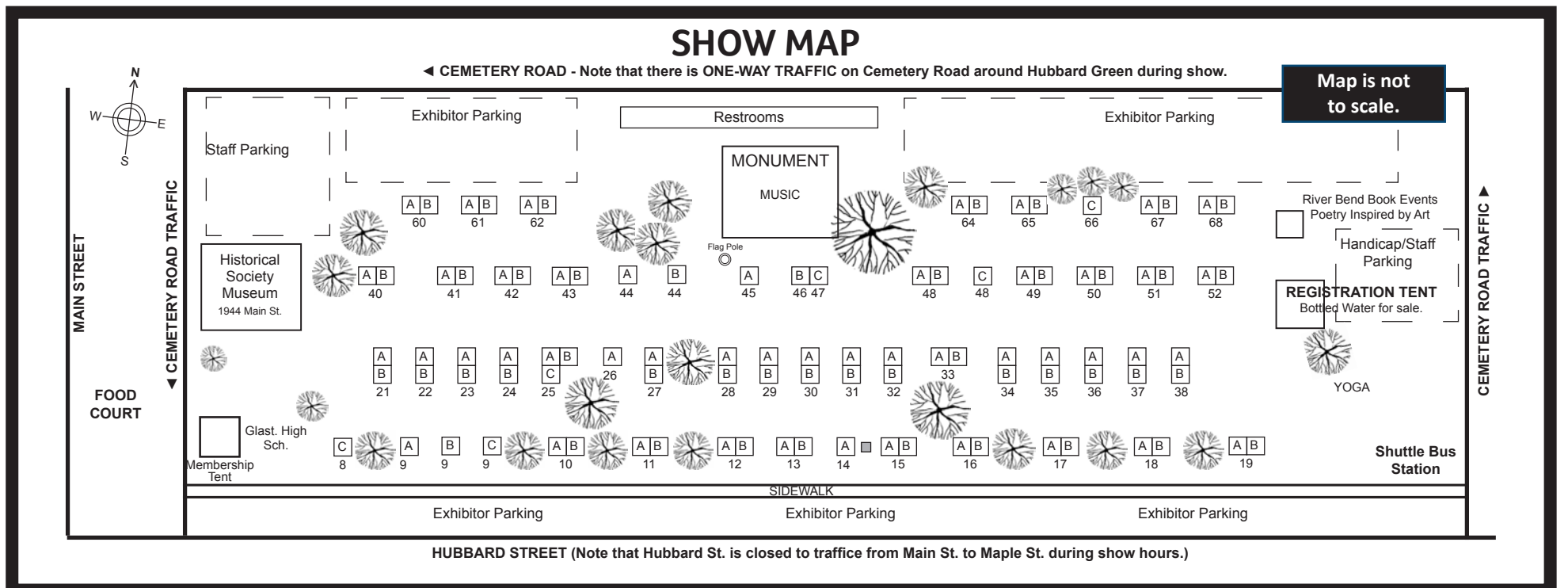
54 Tuttle Place, Middletown CT 06457

Office: (860) 402-9984

www.RenewalbyAndersen.com

2023 EXHIBITORS - Glastonbury's "On the Green" Fine Art & Craft Show

- Ann Abenavoli, Acrylic/WC, 16A**
mrrichh@aol.com
- Suzanne Aberg, Ceramic, 44B**
www.mudjoy-pottery.com
- Jeanne Amato, Prints, 27A/B**
www.jeanneamato.com
- Wendy Avery, Acrylic, 19B**
www.waveryart.com
- Sandra Baker, Mixed Media, 21A**
www.artbysandradee.net
- Susan Baker, Jewelry, 51B**
www.susanbakerjewelry.com
- Elizabeth Barrenachea, Mixed Media, 15B**
miskishulla@gmail.com
- Matt Becker, Ceramic, 41A/B**
www.facebook.com/millcourtceramics
- Steven Bernard, Ceramic, 51A**
bernard11070@gmail.com
- Robert Blazek, Oil, 28A**
rtblazek@gmail.com
- Kristina Bona, Mixed Media, 11B**
@bona.kristina
- Kimberly Booth, Jewelry, 65B**
www.happykimmie.com
- Barbara Boutot, Fiber, 43B**
www.harelooms.net bb@harelooms.net
- Douglas Brandow, Jewelry, 45A**
www.cuttingedgemining.com
- Vanessa Braucci, Ceramic, 49B**
www.ceramicshenanigans.com
- Julie Brayton, Oil, 21B**
www.juliebraytonfineart.com
- Gordon Brodie, Wood, 50A**
olderndrt@cox.net
- Lynn Bywaters, Drawing, 23B**
www.lynnbywatersart.com
- Julianna Cameron, Mixed Media, 22A**
www.juliannacameron.com
- Alison Cargill, Jewelry, 42A**
www.alisondesignsjewelry.com
- Heather Casale, Fiber/Ceramic, 64B**
thecrunchycrafters@gmail.com
- Eileen Clark, Mixed Media, 13A**
www.eileenclarkart.com
- Robin Culklin, Oil, 24B**
robinculkinartstudios@gmail.com
- Carolyn Currie, Oil, 37A**
www.carolyncurrieartist.com
- Jeanne DeCoste, Oil, 35A**
www.jeannedecosteart.com
- Roger DiTarando, Sculpture, 32A/B**
www.ditarando.com
- Ken Dorros, Oil, 29A**
www.kenspaintings.com
- Neal Drobnis, Glass, 46B**
www.nealdrobnis.net
- Tom Dugdale, Wood, 62A**
www.bones2wood.com
- Aatreyee Eitland, Ceramic, 62B**
boori66@yahoo.com
- Olivia Engel, Jewelry, 68A**
oliviaengeljewelry@gmail.com
- Robert Fishman, Ceramic, 52B**
www.fishmanpottery.com
- Allison Flores, Ceramic, 44A**
www.allisonflores.com
- Robin Frisella, Pastel, 12B**
www.robinfrisella.com
- George Gabriel, Sculpture, 38B**
www.infinityartdesigns.com
- Lizabeth Goldberg, Mixed Media, 65A**
www.thecustomshopct.com
- Donna Gratkowski, Pastel, 18A**
www.donnagratkowski.com
- Amy Grossi, Jewelry, 52A**
www.amygrossijewelrydesign.com
- Debra Grubbs, Oil, 09C**
dgsmartart@aol.com
- Robert Handel, Jewelry, 48B**
robdhandel@gmail.com
- Ashley Hyatt, Oil, 13B**
www.stonybrookstudios.com
- Carol Joannidi/Dana Hunt, Jewelry, 61A**
www.littlecatmetals.com
- Cathy Johansen, Oil, 09A**
www.cathyjohansen.com
- Matt Johnson, Metal, 48C**
www.wedgeworkart.com
- Mary Killilea, Oil, 33B**
mlkfineart@hotmail.com
- Linda Kos, Fiber, 40A**
lindakoriginals@sbcglobal.net
- Zhiyi Li, Oil, 38A**
www.zhiyiiart.com
- David Mangels, Photography, 28B**
www.fourcrowsphotography.com
- Melissa Mastrangelo, Acrylic, 10A**
birdgirlart@me.com
- Christine Mathieu, Oil, 10B**
www.christinemathieu.com
- Thomas McLean, Oil, 34A**
dog3ego@gmail.com
- Dena McWilliams, Acrylic, 31A**
denasue7@yahoo.com
- Daniel Merlo, Wood, 48A**
dlm3817@gmail.com
- Cheryl Mirkin, Jewelry, 60B**
www.cmdesignearrings.com
- Patti Jean Misener, Jewelry, 40B**
www.HRHMDesigns.com
- MoMyra, Watercolor, 24A**
www.momyra.com
- Marion Najamy, Mixed Media, 68B**
www.minutesart.com
- Anne Marie Papineau, Glass, 68A**
www.papineaustudio.com
- Lawrence Preston, Oil, 31B**
www.prestonfineart.net
- Stephen Previte, Oil, 17A**
www.previtefineart.com
- Zach Prosser, Acrylic, 25A**
www.zachprosserart.com
- April Quast, Acrylic, 30A**
www.aprilquast.com
- Paul Ramsey, Photography, 23A**
ramzphoto@gmail.com
- Kenneth Richards, Mixed Media, 66C**
www.fromthehideleatherworks.com
- Carlos Rios, Oil, 14A**
www.carlosriospaintings.com
- Pat Rios, Mixed Media Art, 35B**
www.patriosart.com
- Sylvina Rollins, Oil, 18B**
www.sylvinarollinsart.com
- Laurie Cox Schreiber, Mixed Media, 61B**
www.handmadewhimsy.com
- Julie Schroepel, Glass, 47C**
jschrop@aol.com
- Judith Secco, Photography, 16B**
www.judithsecco.com
- Jihong Shi, Oil, 08C**
www.jihongart.com
- Sharon Smith-Alling, Jewelry, 67A**
sharonrdh@comcast.net
- Dennis Stuart, Watercolor, 37B**
www.dennisstuartartist.com
- Carla Thomson, Oil, 36A**
www.carlathomson.com
- David Troche, Acrylic, 33A**
dtvagas@yahoo.com
- Eric Urquhart, Graphics, 09B**
www.ericart.com
- Jean-Paul Violette, Glass, 42B**
canterburyvisions@gmail.com
- Brandy Ward, Ceramic, 64A**
brandywine37738@yahoo.com
- Wendy Waugaman, Jewelry, 50B**
wenjul@earthlink.net
- Hai Wei, Mixed Media, 34B**
weihaihl@gmail.com
- Thomas Wells, Photography, 25C**
www.twellsphoto.com
- Raelinda Woad, Jewelry, 67B**
raelindawoad@comcast.net
- Roy Wrenn, Acrylic, 11A**
www.roywrennart.com
- Bin Ying, Oil, 22B**
1106840302@qq.com



Save the date: 2024 On the Green Show, September 7 and 8, 10 a.m. to 5 p.m. both days


QNP
TECHNOLOGIES
QUALITY NAME PLATE, INC.

Screen Printing • Thermal Transfer Printing • Chemical Etching
Digital Offset • Engraving • Large Format Graphics

22 Fisher Hill Road, Glastonbury CT 06033
(860) 633-9495 www.qnp.com

cotton hollow kitchen

840 Main Street, South Glastonbury • 860.781.8555
www.CottonHollowKitchen.com
Hours: Monday-Saturday Noon to 10 pm, Sundays Noon to 8 pm



In memory of
LOIS FLINT ELDRIDGE
(1928 - 2018)

Gifted Ceramics Artist
Revered Teacher and Mentor
Founding Member of
Glastonbury Arts and "On the Green" Show

"Whether they work in wood, metal, gems, clay, or any other natural materials,
they take what is available in the earth and bring it to life."
- Lois Flint Eldridge

Meet the Judges for the "On the Green" Show

Long before any booths are set up on Hubbard Green, the Show Committee juries the work of potential exhibitors to ensure that the work is original, high quality artwork or handmade craft. When the show opens on Saturday morning, qualified independent judges visit exhibitor booths and determine awards. Awards are based on the sum of an exhibitor's work, not merely on one piece. Award winners will be announced on Sunday morning when ribbons and cash prizes are awarded.

SHAUNA SHANE (Art Judge) Working with a variety of mediums including watercolor, oil, and pastel, Shauna's work is saturated with light and color. Informed by many years of painting from life, her paintings reflect the ability to communicate the energy, color, and the unique atmosphere of a scene beyond her solid academic training.

Selected as Resident Artist at the New Britain Museum of American Art during the California Impressionist Exhibit, Shauna began her career as Resident Artist at Yellowstone National Park. She has since exhibited and received major awards in international competitions around the country, including Hudson Valley Art Association, Academic Art League, Oil Painters of America, and Renaissance in Pastel. Plein air paint out competitions include Brandywine PA, St. Petersburg and Bradenton, FL.

A professional painter for more than 40 years, Shauna is represented in collections in the USA and around the world, including the Governor's portrait in the State Capitol in Helena, Montana. She is a Signature Member of Hudson Valley Art Association, Academic Art League, CT Pastel Society and NorthEast and New England Watercolor Society, and an Elected Artist Member of Lyme Art Association and the CT Plein Air Society.

"I believe the artistic journey is like a musical instrument, taking time and practice to master. What people call talent is better described as a passion that gives a profound joy every moment the artist is deep inside the discovery of a beautiful scene. My own artistic life is dedicated to achiev-



Above: Art of Shauna Shane

ing the observational skills and nuance that makes communication through a simple well-placed brush stroke as beautiful and descriptive as a perfect word in a poem."

JOHN LIPSKY (Craft Judge) earned his Bachelor of Arts in Communication Arts from the University of Wisconsin. John began taking pottery classes in 1980, a hobby that grew into a 40 year pottery obsession.

"Clay is a wonderful flexible media that can be molded and shaped infinitely. I was drawn back to it after college. My degree was in Television Production and after a short stint at PBS in the mid-west, I returned home in CT to work in the family's small high tech manufacturing business. High tech and the visual arts didn't mix too well so I looked for an outlet on the side to keep my creative juices flowing. I found a local pottery class in 1980 and have been with it ever since."

"As a visual person, I am attracted to anything that catches my eye, be it something in nature, architecture, or in the classical or modern arts. I try to push my own personal creative envelop with new techniques, new shapes, new colors, new styles. I like to throw large forms. As a faculty member, I try to push my students along to gain success, confidence, and self-discovery in their own work with my First Rule of Pottery – there are no rules.



Above: Ceramics by John Lipsky

John started teaching at Wesleyan Potters in 1995 and has been a Key Member since 2012 and currently serves on the Wesleyan Potters Board of Directors.

LINDA JONES (Jewelry Judge) creates wearable art in the form of bracelets, earrings, and pendants, shaping, inscribing or piercing the metal to create unique designs. As she says, "It's a process. From sheet metal to drawing the design, placing metal in etching solution, cutting the metal, shaping, filing, polishing, oxidizing, to the finished product. It's a process."

Her creations reflect her love of music, dancing, reading, and storytelling.

"I want my jewelry to tell a musical story that customers desire to wear, read and dance to. I want them to hear the tapping of hammers and the hum of the drill, sense the fire of the torch. Each piece is created with a rhythm, a jazzy pair of earrings, a classical necklace, or a tribal bohemian bracelet. As I've created each special piece I hope you feel the rhythm as you wear the jewelry, walking, dancing, or dreaming with rhythmic style."



Above: Jewelry by Linda Jones

"...failure with clay was more complete and more spectacular than with other forms of art. You are subject to the elements... Any one of the old four – earth, air, fire, water – can betray you and melt, or burst, or shatter – months of work into dust and ashes and spitting steam. You need to be a precise scientist, and you need to know how to play with what chance will do to your lovingly constructed surfaces in the heat of the kiln."

– A. S. Byatt, *The Children's Book*

Save the date: 2024 On the Green Show, September 7 and 8, 10 a.m. to 5 p.m. both days



fuller yoga™
Live Simply & Wisely™

Fuller Yoga Pilates and Massage

- Group classes
- Private sessions
- Pilates reformer classes
- Beginners welcome

Because no one regrets good health.

39 New London Turnpike
Glastonbury CT 06033
www.FullerYoga.com
(860) 430-9642



Free Class Pass



**WHOLESALE
FRAME
company**™

**\$50 Off
Corner Sample Order**



203-238-9841
170 Research Pkwy, Meriden, CT 06450

Scan Code
for more info

**Because helping others
is what matters most to you.**

Everyday, we strive to live up to people like you who are dedicated to helping others. Your achievements are something to celebrate.

See how we're living up to you. Visit WebsterBank.com.

We're pleased to support Glastonbury's "On the Green" Fine Art & Craft Show.

Glastonbury Banking Center
860.659.6290



WebsterBank
LIVING UP TO YOU

Webster Bank, N.A. Member FDIC. Equal Housing Lender
©2017 Webster Financial Corporation. All rights reserved.
The Webster symbol is a registered trademark in the U.S.

CHRISTOPHER P. FRALEIGH

FRALEIGH & GRAY, INC.
PERSONAL AND BUSINESS INSURANCE

Serving all of Connecticut!

2450 MAIN STREET, P. O. BOX 1139, GLASTONBURY, CT 06033
860.633.1880 | FAX: 860.657.8904
CHRIS@FRALEIGH-GRAY.COM

WWW.FRALEIGH-GRAY.COM

I found I could say things with color and shapes that I couldn't say any other way - things I had no words for.
- Georgia O'Keeffe



Quality, care and preservation for our client's art, photos and memories has been our passion for over 35 years. Our family owned local frame shop is excited to assist you with your artistic projects. We offer picture framing, photo restoration, photo printing, enlargements, shadowboxes and even repairs for when the movers broke the frame on the family portrait.

**VISIT US IN THE SHOP TO DISCUSS YOUR UPCOMING PROJECT!
CALL OR TEXT 860-747-2939 FOR HOURS OR APPOINTMENTS.**



**SCAN TO VISIT
WEBSITE**

CUSTOM FRAMING GALLERY WALLS REPAIRS	PHOTO PRINTING FINE ART PRINTING ENLARGEMENTS	PHOTO RESTORATION SCANNING DIGITAL CONVERSION	SHADOWBOXES MEDALS & HONORS MEMORABILIA
--	---	---	---



@JWFRAMECRAFTERS | 860-747-2939 | 864 MAIN STREET SOUTH GLASTONBURY, CT 06073 | WWW.JWHITNEYFRAME.COM

Artists Sneak Preview



Julie Schroepfel, Glass

Once again, we look forward to gathering on Hubbard Green to celebrate the visual arts in its many forms. Artists from all over the Northeast and beyond travel to Glastonbury, Connecticut to show their work "On the Green." Want something new for the home, something to wear, holiday shopping? "On the Green" has it all.

The artists you meet "On The Green" want to inspire you to buy from their beautiful displays. That said, painters, jewelers, and

pottery, in fact most exhibitors, welcome the opportunity to work on commission. If you are looking for a specific style, subject, size, or color range, ask the artist. If you order something from an exhibitor, ask for a complete receipt with the artist's name, address, phone number, and e-mail. Glastonbury Arts does not participate in exhibitor art transactions.

Here is a small sample of what awaits you on Hubbard Green this weekend.

JULIE SCHROEPEL, booth 47C, is a glass artist specializing in fused glass, dichroic glass and art glass. "I've been fascinated with glass my entire life. I studied design and technique while apprenticing at a stained glass studio in Denver, Colorado before moving to New Hampshire."

Her range of glass kiln-work includes jewelry, plates, disks and art glass sculpture. Julie's jewelry designs are often inspired by the color and texture of the dichroic glass. Her larger pieces are made with bullseye glass. Julie's stunning creations often incorporate silver and gold into her plates, jewelry, and sculpture.

www.Facebook.com/JulieSchroepfel

ROGER DITARANDO, booth 32A/B, uses a variety of metal working techniques in unique combinations, direct metal assembly, die-forming, and lost-wax casting. He has earned a reputation as a sculptor of singular craftsmanship and inventive precision, a traditionalist who breaks the rules and an innovator who pays homage to the past.

His subject is the natural world, combining boldness of design and blacksmith artistry with an abiding respect for and appreciation of the natural world.

www.Ditarando.com

ZACH PROSSER, booth 25A, is a Rhode Island contemporary artist whose work is driven by energy, experimentation, and emotional content. Zach's work has evolved from abstract ideas of dream-like landscapes, celestial imagery, and atmospheric energy, to his most recent work

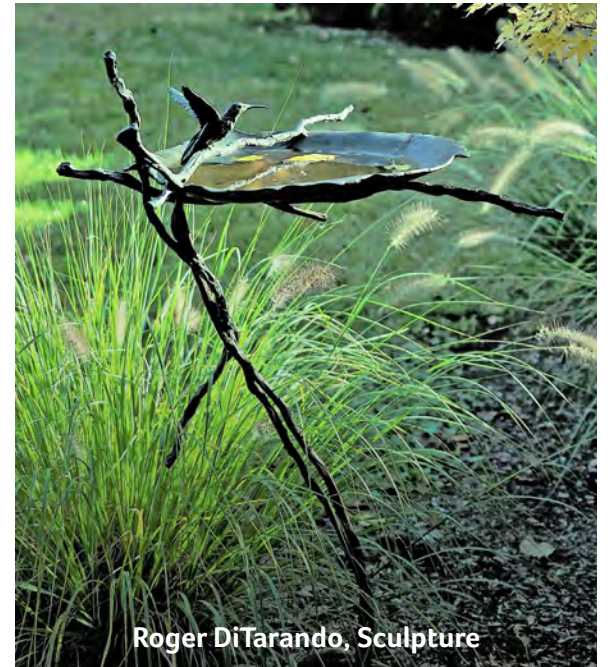
of vibrant and colorful abstracted floral landscapes. This landscape series pushes the limits of smooth and heavy textures to vivid color gradients to create movement and beauty in each piece.

Zach is an exhibiting member of the Wickford Art Association. He has studied with Providence artists Anthony Tomaselli and Bob Dilworth.

www.ZachProsserArt.com

SYLVINA ROLLINS, booth 18B, is a dedicated landscape painter drawn to the New England farm landscape and its animals. "I love plein air painting and the spontaneity required to capture the scene before the light changes or the animal moves."

Sylvina recently wrote *Luna — A Tribute*, a charming painterly portrait of her beloved white German Shepherd, Luna. Her book combines her colorful musings about life



Roger DiTarando, Sculpture

two hopewell
bistro & tavern

2 Hopewell Road, South Glastonbury
(860) 633-9600 | www.2Hopewell.com

"... a fine place to spend an evening."
The New York Times

ZINNEKEN'S

NOW SERVING FULL BREAKFAST
Tuesday - Sunday, 7:30 AM - 2:00 PM

We look forward to serving you our delicious made to order waffles and savory breakfast.

Online ordering at
www.ZinnekensWaffles.com

BELGIAN WAFFLE AND CAFE

331 A New London Turnpike, Glastonbury CT
860-781-8596
Catering available at www.glastonbury.zinnekens.com

sayulita

Inspired Mexican Cuisine

865 South Main Street, South Glastonbury
(860) 430-9941

www.CantinaSayulita.com

FAST • FRIENDLY • FAMILY OWNED

GLASTONBURY COFFEE SHOP

Est. 1978

Great Taste
Fast Service
Smiling Faces

Inside & Outside Eating
Takeout
Open 6 am - 1 pm

30 Welles Street, Glastonbury CT • (860) 659-0182

SOUTH SIDE WINE SHOPPE

Domestic & Imported Wines, Beers & Liquors
Craig A. Witzke, Proprietor

One Water Street, South Glastonbury • (860) 633-2763
www.SouthsideWines.com

OVER 130 YEARS OF QUALITY & SERVICE

HIGHLAND PARK MARKET

Est. 1886

NOBODY DOES IT BETTER

Fresh Meat & Poultry, Fresh Produce, Fresh Seafood, Fresh Bakery, Fresh Delicatessen, Prepared Foods to Go!

1320 Manchester Road, Glastonbury CT
(860) 659-1717
www.HighlandParkMarket.com

860.633.4621

KESER'S FLOWERS

Serving all your floral needs!

337 New London Turnpike, Glastonbury CT • www.kesersflowers.com

Emmy Lou's, Ltd.

Our Specialties:
• Custom botanical silk floral designs
• Gifts for all occasions

A Gift Shop for All Seasons and Reasons
Glastonbury's Christmas Shop

17 Hebron Avenue, Glastonbury • 860 633-9565

REHAB K9

Let Us Take Care of Your Four-Legged Furry Friends!

Dog Barkery, On-Site + Mobile Physical Therapy, Full & DIY Grooming

Also Available: Dog Lover Fashion + Decor

www.ReHabK9Care.com • (267) 777-7213 • ReHabK9Care@gmail.com
160 New London Turnpike, Glastonbury, CT 06033

with the rescue dog she reluctantly adopted and adored with her vibrant portfolio of portraits of Luna. Heartfelt and humorous, the adventures of Luna will tickle your funny bone and capture your heart.

www.SylvinaRollinsArt.com

ALLISON FLORES, booth 44A, is a ceramic artist whose work is defined by crisp stylized forms, incised surfaces, and inventive glazes. "My hope is to create an enjoyable experience for those who will view and most importantly use my pots. In each piece, I aim for a marriage of functionality and unique design, a celebration of life and a call to use objects each day that are meaningful and bring us joy."

Recently, Allison has been exploring sprigging, inspired by the shapes and patterns found among her grandmother's costume jewelry. A sprig is a separately molded design added to the body of a pot during the greenware stage. This type of applied relief decoration is called sprigging and its re-

sults vary greatly from artist to artist. An easy way to think of it is a clay button.

www.AllisonFlores.com

JEANNE AMATO, Booth 27A/B, received a Bachelor of Fine Arts in 1985 from Keene State College where she studied printmaking with John Roberts. Upon moving to central Vermont, she worked as an assistant to renowned Vermont printmaker, Sabra Field. At the same time, Jeanne began to develop her own artistic voice for creating art through the woodcut medium. More than twenty years later, the woodcut continues to hold her fascination.

Artists Sneak Peak continued on Page 8



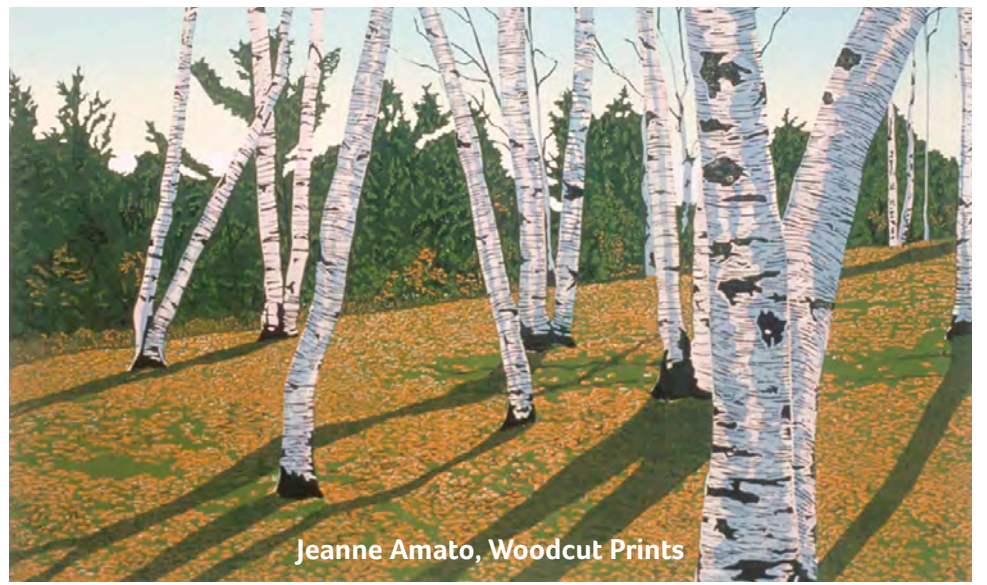
Zach Prosser, Acrylic



Sylvina Rollins, Oil



Allison Flores, Ceramic



Jeanne Amato, Woodcut Prints

If I paint a wild horse, you might not see the horse... but surely you will see the wildness! – Pablo Picasso

Proud to Support Glastonbury Arts

Julia Rosner
REALTOR®
860-508-3636

Let's discuss strategies to maximize your home's value!

**International President's Elite
#1 Glastonbury Coldwell Banker Realtor**

Serving Glastonbury and the Greater Hartford Area

Portraits
by
Lynn A. Damon
photographic artist
www.lyndamon.com

celebrating 40 years creating portrait art
860.818.2491

In addition to being a printmaker, Jeanne Amato enjoys teaching children and adults. She often teaches and hosts workshops at her studio and gallery, Allen Hill Press. Professional memberships have included: Vermont Crafts Council, Vermont Hand Crafters, Inc., Glastonbury Art Guild, St. Louis Artists' Guild, and League of New Hampshire.

www.JeanneAmato.com

AMY GROSSI, booth 52A, believes that glass design and music are in her blood. "My father was a glass scientist and my mother was a musician. It's a unique pairing of the scientist and the creative. Enter the jewelry maker with a musical mind."

Every piece is handmade from the metal beading and metalsmithing to the glass beads; both processes are forged in fire. For the glass beads, She uses a process called lamp work.

Unlike glassblowing, lamp work uses a fixed directional flame to melt the glass while at the same time using special tools

and gravity to shape each piece by hand. One. Bead. At. A. Time.

What does this mean? No two pieces – whether it is jewelry or her exclusive line of tableware - are the same. Every piece is unique. Just like you!

www.AmyGrossiJewelryDesign.com

TOM DUGDALE, booth 62A, once known as Thomas Dugdale, M.D., orthopedic surgeon, is now just Tom. "After decades of fixing bones and joints, I have transitioned from the operating room to the workshop, switching from bone to wood and founding Bones2Wood."

Tom creates woodworking projects, such as end grain cutting boards, edge grain cutting boards, charcuterie boards enhanced with epoxy, river boards, woven boards, bowls, and lazy susans. "I especially find it rewarding to receive pictures of things I've sold being put to good use as wedding gifts, birthday presents, and holiday surprises.

www.Bones2Wood.com



Amy Grossi, Glass & Jewelry



Tom Dugdale, Wood

This is just a small sample of the creative artists waiting to inspire you with their original fine art and handmade craft. We hope to see you all "On the Green."

Glastonbury High School Exhibition
(Opposite the Glastonbury Historical Society Museum)

Once again, Holly Constantine, Director of Visual Arts for Glastonbury Public Schools, and her team of art educators and students will present an art exhibition at the "On the Green" show.

total mortgage
We're the Glastonbury, CT mortgage experts

Bob Zanlungo, Branch Manager

340 Hebron Ave., Suite 101, Glastonbury, CT 06033
(860) 933-8480 www.totalmortgage.com/locations/glastonbury

SLICEWORKS
eat. drink. relax

sliceworksglastonbury@gmail.com

363 New London Turnpike
Glastonbury CT 06033
860-652-8889

Thread by Thread
Boutique

WHERE EVERY PURCHASE MAKES A DIFFERENCE

862 MAIN STREET, SOUTH GLASTONBURY
THREADBYTHREADBOUQUETTE.COM

MAHOGANY SHOPPE

Specialty Gifts - Cards - Home Accessories
2285 Main Street, Glastonbury

(860) 563-1883 centuryautoservicect.com

50+ YEARS OF COMBINED EXPERIENCE

CENTURY AUTO SERVICE

WE SPECIALIZE IN DOMESTIC & FOREIGN AUTO REPAIRS

138 Welles St. Glastonbury CT
Open Mon - Fri: 8 am - 5 pm

Visit Our Website

- Brakes
- Oil Changes
- Tires
- Mufflers
- Scheduled Maintenance
- AC / Heating
- Auto Electrical
- Suspension Repairs

LIQUID NIRVANA

Change Your Karma, Achieve Nirvana
Juice and Smoothie Bar

2333 Main Street, Glastonbury CT (860) 430-9255
39 E. Main Street, Avon CT (860) 404-2479
180 Main Street, Farmington CT (860) 404-2413
www.facebook.com/liquidnirvana
Instagram: @liquidnirvana

Come in and get \$1.00 off your purchase!
www.Liquid-Nirvana.com

Scott's Orchard & Nursery
Celebrating 50 years – Faith, Family, Farming

Fresh Fruit & Vegetables
Trees, Flowers & Shrubs
Bark Mulch & Soil
Landscaping Services

(860) 633-8681
1838 New London Turnpike, Glastonbury CT
www.ScottsOrchardandNursery.com

STOP & SHOP

55 Oak Street, Glastonbury CT
(860) 652-8925

CONNECTICUT SHADE & BLIND
HunterDouglas Gallery

277 Hebron Avenue
Glastonbury CT 06033

Our reputation is in our treatment.

Ron & Marilyn Gattinella P:860.633.0721

Looking for a fulfilling and creative way to serve your community and meet new friends?
Volunteer your time and talents to Glastonbury Arts!

It goes without saying that the presentation of the "On the Green" show is when Glastonbury Arts really needs our members and volunteers to step up. Proceeds from the show have positive effects well beyond the show weekend, funding year-round art programming for people of all ages. For over 60 years, our "On the Green" show has been a highlight of the regional calendar. Not bad for an all-volunteer effort!

That said, we have many other ways for you to get involved and to meet new friends who share your love of the arts. Our annual, ongoing "happenings" include:

- "On the Green" Art & Craft Show
- Art Lectures and Artist Demonstrations
- Art Classes and Workshop
- Art Exhibitions
- Marketing and Media Outreach
- Membership
- Building and Grounds
- Event Hospitality
- Budgeting and Planning

Perhaps, you would like to join our Board of Directors, adding your voice and ideas to the conversation.

Our Board of Directors includes artists and non-artists alike and that's the way we like it. We want voices around the table that can bring different backgrounds, skills, and experiences to bear as we strive to improve our operations and to make our programs relevant to the community at large.

The Board of Directors meets in person and remotely, as the circumstances require, one evening per month and we always remain respectful of our members' volunteer time commitments.

Sounds interesting? We welcome the opportunity to share our experiences and to answer any questions you may have about joining Glastonbury Arts, our board, and committees.

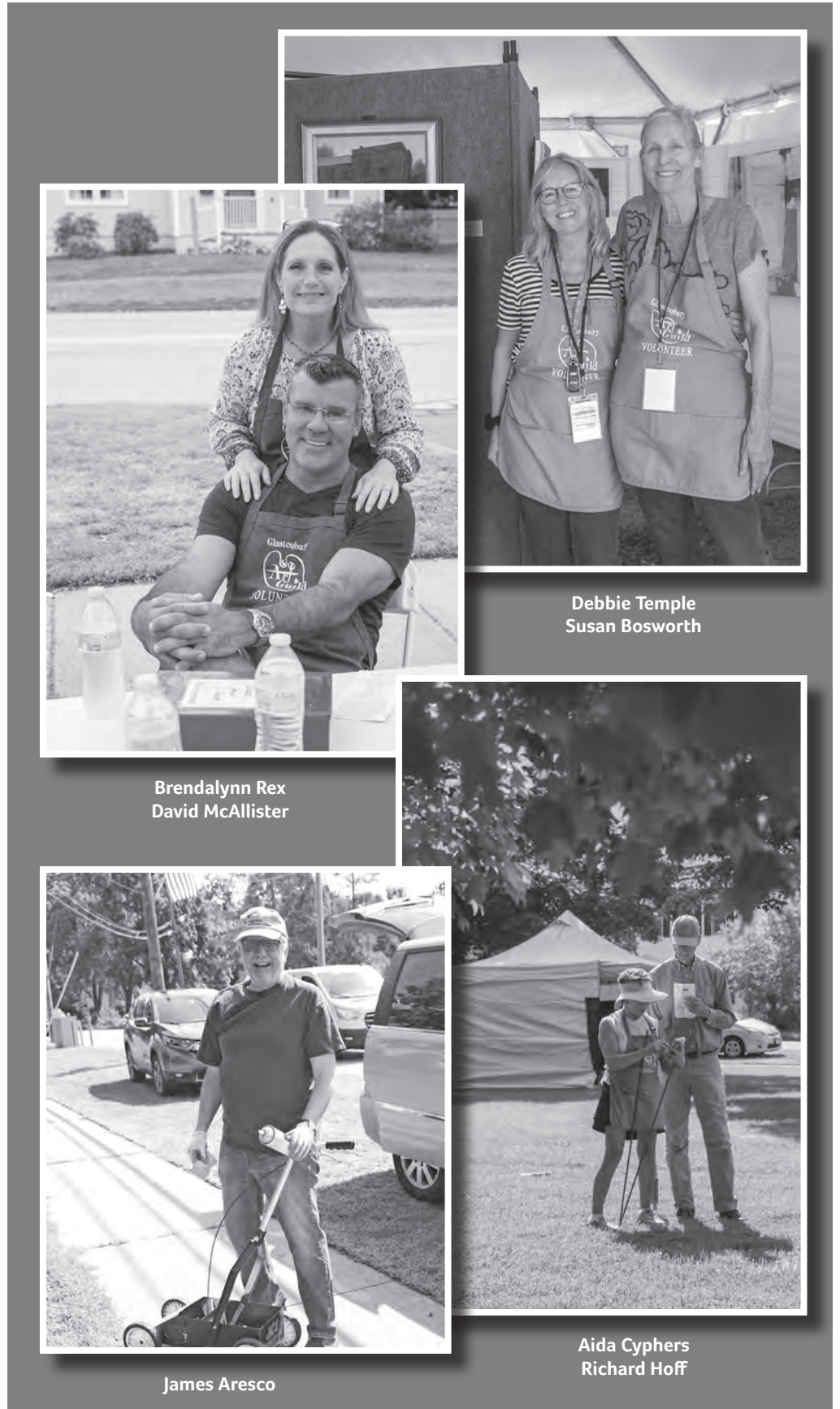
Contact the Glastonbury Arts office at info@GlastonburyArts.org

Executive Director Sharon Dalicandro at dalicandrosharon@gmail.com.

More about Glastonbury Arts at
www.GlastonburyArts.org



Art for the Heart, Mind, and Soul!



Brendalynn Rex
David McAllister



Debbie Temple
Susan Bosworth



James Aresco



Aida Cyphers
Richard Hoff

Since 1962, Glastonbury Arts has fostered engagement in and appreciation for art in all its forms through exhibitions and classroom instruction, lectures and demonstrations, special events, art scholarships, and mentoring.



Use our online membership form to join Glastonbury Arts
or use the form below to join by regular mail.



Name: _____

Street, City, State, Zip: _____

Phone: _____ EMail: _____

Check all that apply: Art Enthusiast Collector Beginning Artist Intermediate Artist Established Artist

Pick the membership level that suits your budget and join today.

Individual - \$35 Family - \$50 Sustaining - \$75 Patron - \$100 Benefactor - \$200+

Credit Card Account #: _____ Check payable to Glastonbury Arts

Exp Date: _____ Security Code: _____ Signature: _____

I would like to volunteer or participate in the following activities (check any that apply):

- On the Green Art & Craft Show
- Art Lectures and Artist Demonstrations
- Art Classes and Workshops
- Art Exhibitions
- Marketing and Media Outreach
- Membership
- Building and Grounds
- Event Hospitality
- Budgeting and Planning
- Other: _____

Glastonbury Arts is a 501 (c)(3) non-profit corporation. Donations above the \$35 basic membership level are tax-deductible to the fullest extent allowed by law.

Mail to Glastonbury Arts, 1396 Hebron Avenue, Glastonbury, Connecticut 06033.

Thank you for your generous support of the cultural life of our community!



Unleash Your Creativity Art Class for Adults, Teens, and Children

Classes are held at the Glastonbury Arts Center, 1396 Hebron Ave., Glastonbury

Adult Classes & Workshops

DRAWING FOR ALL LEVELS: Instructor Shauna Shane. Mondays, Sept. 18 to Oct. 30 (6 weeks), 9:30 a.m. to 12:30 p.m. No class on Sept. 25. Fee: \$205.

Learning to be an artist starts with the ability to translate what you see into a competent drawing. See the world as shapes, value, shadow, and light and give yourself the tools to succeed in any art medium. Each class begins with an instructor demonstration, describing steps and thought processes for developing a drawing from concept to the final resolution.

COURAGEOUS WATERCOLOR: Instructor Shauna Shane. Mondays, Sept. 18 to Oct. 30 (6 weeks), 1:00 to 4:00 p.m. No class on Sept. 25. Fee: \$205.

Each session begins with a discussion of materials and goals followed by an informative instructor demonstration, describing the "why" of each decision. Learn the most effective way to load the brush, dropping one color into another, allowing the watercolor to achieve its potential of fresh vibrant color. Gain confidence as you learn to express yourself artistically and see the world in a new way.

ACRYLIC PAINTING: Instructor Nancy Cooke Bunnell. Tuesdays, Oct. 3 to Nov. 7 (6 weeks), 9:30 a.m. to Noon. Fee: \$190.

This class will focus on contour, value, color, and contrast as it relates to floral, still-life, and landscape painting. Students may work the entire time in acrylic but are encouraged to also experiment with pastels. The first lesson covers an intro to the use of acrylics, how to see value and composition, and how to use graphing. Future lessons will cover underpainting, color mixing, and more as we paint florals or abstract realism. The final lessons will focus on landscapes, both realistic and abstract.

PETS AND ANIMALS PASTEL WORKSHOP: Instructor Karen Israel. Wednesday, Sept. 20 (one day workshop), 10:00 a.m. to 4:00. Fee: \$155.

Create an animal portrait using soft pastels on a sanded surface with helpful tutorials on perspective and proportion of the face/body, fur and feather textures, underpainting approaches and color temperature bias and values.

PAINTING BETTER LANDSCAPES IN OIL: Instructor Katherine Simmons. Wednesdays, Oct. 4 to 25 (4 weeks), 9:00 a.m. to Noon. Fee: \$145.

Create strong compositions with a decisive division of space, well-located focal point, hard and soft edges, with a clear light to dark value range and pattern. Learn the value of thumbnail sketches, how to mix colors, and how to create a sense of depth. Understand the uses and pitfalls of photo references. Students should bring their own photo references to each class. Some painting experience is recommended.

KEEPING IT LOOSE! PASTEL ONLINE WORKSHOP: Instructor Janet Schwartz. Friday, Oct. 27 (one day), 9:30 a.m. to 3:15 p.m. Fee: \$125. Fee: \$125.

Use thumbnail sketches and small works to experiment with composition and color. These exercises give you an opportunity to think about what you like, what you'd like to change, a new approach. This process guarantees to loosen you up! Our subject matter will be simple, experimenting with color, mark-making, and composition, trying out different points of view, pushing yourself outside your comfort zone.

Adult students must provide their own art materials. Materials lists are online.

Full class information and registration online



Advanced teens may enroll in adult classes but must provide their own art supplies when they register for adult classes.

All are welcome to enroll. Members receive a 5% discount on course fees.

TEEN WORKSHOPS

EACH WORKSHOP MEETS ON SATURDAYS, 9:30 - 11:00 A.M., followed by an Open Studio from 11:00 a.m. to 12:30 p.m. Free for teens enrolled in the workshop. Teens who are not enrolled in a workshop may join the Open Studio supervised by instructor Sandra Gustafson for a drop-in fee of \$10. Open Studio provides the opportunity to continue a workshop project, work on a personal project started out of class, or join in a group art project.

Drawing from Memory – Instructor Sandra Gustafson, Sat., Sept. 30 (1 day), Fee \$35. Intentional observation provides the foundation for drawing from memory, strengthening the ability to understand form and translate observable light into drawn values, creating the illusion of depth.

Intro to Figure Drawing – Instructor Sandra Gustafson, Sat., Oct. 7 (1 day), Fee \$35. Understand the basics of proportion, gesture, and form in drawing the figure. Through playful, low risk activities, we will explore the possibilities for meaningful, personal expression through figure drawing.

Intro to Woodcarving for Teens – Instructor Gabe Herman, Sat., Oct. 11 to Nov. 4 (4 weeks), Fee \$125 (includes \$30 carving kit for student to keep). Learn the basics of safety, blades, wood species, and techniques used to design and carve handmade wooden chopsticks and spoons. Students will leave with confidence and knowledge to safely transform pieces of wood into beautiful, functional carved objects.

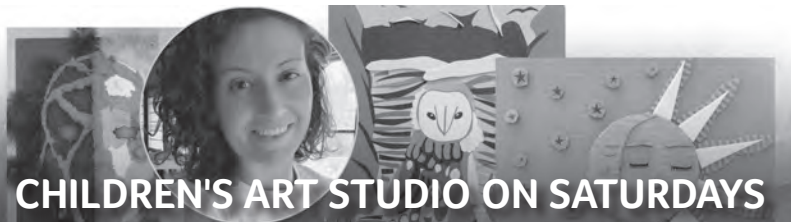
Composition Strategies – Instructor Sandra Gustafson, Sat., Oct. 14 (1 day), Fee \$35. The entire canvas is an opportunity. Learn to utilize design strategies to create dynamic armatures in your 2D compositions so you activate your canvas from corner to corner.

White on White Still Life – Instructor Sandra Gustafson, Sat., Oct. 28 (1 day), Fee \$35. We will learn to see the colors that white objects reflect to create a limited palette acrylic still-life.

Objects as Narratives: Charcoal Still Life – Instructor Sandra Gustafson, Sat., Nov. 11 (1 day), Fee \$35. Intentional arrangement of objects can juxtapose symbolic content to create new meaning and powerful narratives. Students will learn to tell stories with their still-life arrangement while practicing observational and compositional strategies.

Citri-Solve Collage Landscape – Instructor Gabe Herman, Saturdays, Nov. 11 & Nov. 18 (2 weeks), Fee \$55. Using a chance-embracing process of dissolving magazine images with Citri-Solve, we will manipulate, select, and arrange one-of-a-kind papers to create collage landscapes.

Art materials are included in the workshop fees.



CHILDREN'S ART STUDIO ON SATURDAYS

Ages 6 - 10: Instructor Lorin Veturis. Sept. 23 to Nov. 11 (8 weeks), 1:30 to 3:00 p.m. Fee: \$150. Students will explore and complete several media and technique-based art projects. Each class will focus on a different material or concept including, but not limited to, drawing, painting, sculpture, and printmaking.

Art materials are included in the Children's Art Studio class fee.

Thank you!
GLASTONBURY
Arts

for bringing fine art to our
community for over 60 years!

Best wishes with the capital campaign
to renovate the Arts Center that will make the
next 60 years as successful as the first!

– Bob and Carol Ahlschlager

Best wishes from the Glastonbury Arts

Thursday Painters

Martha Bradley
Susan Bosworth
Nancy Davinis
Linda Gotta



Danuta Jaworska
Cecilia Roehl
Gail Schwartzkroin



KIMBERLY MEYER, AAI

ANDERSON-MEYER
INSURANCE, INCORPORATED

2225 Main Street, Glastonbury, CT 06033
Tel: (860) 659-3741 • Fax: (860) 828-2667
kmeyer@amiagency.com

www.amiaagency.com

Congratulations to
Glastonbury Arts
on the 61st
Anniversary of the
"On the Green" Show!
Richard & Aida Cyphers



Poetry Inspired by Art

Sunday, September 10, 3:00 p.m.
at the "On the Green" Show on Hubbard Green

A collaboration between Glastonbury Arts, River Bend Book Shop, and Glastonbury Poet Laureate Andrea Barton.
Original poetry inspired by the art of Glastonbury Arts artist members.

Look for this event next to the Registration Tent.

Participating poets include Andrea Barton, Mark Busa, Jackie Killelea, Frederick-Douglas Knowles, Jerry Lusa, Mary Rose Meade, Vicky Nordlund, Ryan Parker, Bessy Reyna, and Elizabeth Thomas.

Participating artists include Susan Bosworth, Nancy Davinis, Linda Gotta, Gwendolyn Quezaire-Presutti, Diane Stone, Gail Schwartzkroin, Debbie Temple and Patricia Trapp. As one participating artist explained, "I thoroughly enjoyed the experience, it is fascinating to see how another artist in a different medium responds to my painting."


"Art Inspired by Poetry" is part of our "Got Art" lectures and artist demonstrations providing a window into the creative experience.

Upcoming September: Polly Castor - Art Journal, Wednesday, September 20, time and place to be announced.

Upcoming in October: Photo Safari with Lynn Damon, Master Photographer, Sunday, October 1, 4:00 to 6:00 p.m., at the Joseph Preli Farm and Winery, 235 Hopewell Road, South Glastonbury.

Check our website for the schedule of free "Got Art" programs year round.



All Got Art programs are free and open to the public.



CLOTHES MENTOR[®]

WOMEN'S RESALE

Shop like-new brand name clothing, shoes, designer handbags & accessories at up to **70% OFF** mall store prices or sell us your gently used fashions!

We pay **CASH**
ON THE SPOT for
designer handbags

FOOD COURT MENU

Located near the Glastonbury Historical Society Museum on Hubbard Green






COLOSSAL KIELBASA
Kielbasa, Pierogi Options, Stuffed Cabbage, Potato Salad, Kids Menu w/Hamburgers and Hot Dogs

SQUARE PEG PIZZERIA
Slices of Wood-Fired Pizza in Cheese, Pepperoni, Margherita, and Chef's Specialty Varieties.

LEMO NATE'S
Fresh-Squeezed Lemonade, Limeade, Iced Tea with Strawberry, Blueberry, Cherry, Mint, Basil, Cucumber, and Ginger Mix-ins.

KONA ICE
Vita Blend, Fruit First, Sugar Free And Classic Kona Ice Cups

The Historical Society of Glastonbury

Upcoming at the Welles-Shipman-Ward House:

HARVEST TIME, Sunday, Sept. 17, 1 – 4 pm, Admission \$10.
Experience life for the colonists and the First Peoples who lived in the area. Help harvest the kitchen garden, play colonial and Native American Games, investigate "hands-on-history" and examine early tools, furs and artifacts! Watch flint knapping. Practice throwing atlatls and MORE.



Knowing our past, guides our future.






Something for the entire family!

11TH ANNUAL GIANT TAG SALE, Sept. 29-Oct. 1, 9 am – 3 pm, Friday, Sept. 29 only-Early Bird from 8 – 9 am (\$10 fee). Free admission all other times. Donations accepted from 8 am to 12 pm on Mondays at Welles-Shipman-Ward House and on Saturday, Sept. 16.

For more information, visit our booth at the "On the Green" Show, our Facebook page, or our website www.HSGCT.org.



SHOP IN-STORE & ONLINE

90 Buckland Rd, Unit E • 281-729-1300
SouthWindsorCT.clothesmentor.com



Wesleyan Potters

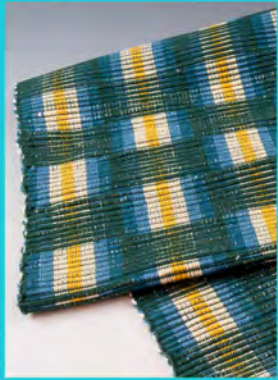
GALLERY/SHOP AND SCHOOL
Classes and Workshops
Pottery, Weaving and Metalsmithing
Children's Classes



ANNUAL EXHIBIT & SALE

Nov 24 - Dec 24, 2023

OPEN WEDNESDAY- SUNDAY



350 South Main St., Middletown
www.wesleyanpotters.com

"SELLING is an ART
EXCEPTIONAL SERVICE is our
MASTERPIECE"
-MARGARET

MARGARET WILCOX TEAM
860.916.3517
WILLIAM RAVEIS
REAL ESTATE • MORTGAGE • INSURANCE

Support our Capital Campaign

Over the past two years, we have been engaged in a major re-assessment of our art center and grounds and concluded that a major renovation to our Art Center would position us well to continue our long tradition of enhancing the cultural life of our community.

The plan calls for reconfiguration of the Center's interior plan: enlarging and renovating the gallery and art studio and improving our energy efficiency, security, and accessibility systems. The Center serves as a hub of activity for planning our art programming: classes, exhibitions, art lectures and demonstration, and of course, the nationally recognized "On the Green" Art & Craft show.

Help to put us over the top with our fundraising!

Use our convenient and secure
online donation form.



Or mail your check to:

GLASTONBURY *Arts*

1396 Hebron Avenue, Glastonbury CT 06033