

The Source

HP16

This and all previous issues are available at www.hp16.org.uk



HP16 The Source thanks Great Missenden Parish Council and the Missendens Community Board for supporting the production of the paper.



The FREE Community Newspaper for HP16

Issue 82 March - April 2024



p3 ARTS



p4 EDUCATION



p8 SPORTS



p10 CHURCH & CHARITY

Investors in People gold for Prestwood Gym & Fitness Centre

Prestwood Gym & Fitness Centre has received gold accreditation from 'Investors in People', an international standard. Luke Askew, the Partnership Manager, is rightfully proud of this achievement and he will be taking on an even more 'hands on' role from 1 April when Prestwood Gym & Fitness Centre becomes GLL's standalone facility in Buckinghamshire.

Having been the centre's Partnership Manager since January 2013 and overseen the investments into the car park & lighting in 2015, the changing

rooms in 2018 and the gym & studio refurbishments in 2022, he remains committed to improving the facility in the years to come.

Prestwood Gym & Fitness Centre is Luke's most local facility for GLL/Better (an employee owned charitable social enterprise) with Luke living in Aylesbury with his wife and son. In addition to managing Prestwood's Community Health and Fitness Centre, Luke is a keen runner and a governor at The Vale Federation (2 special needs schools in Aylesbury).



Dan Brennan and Luke Askew members of the team at Prestwood Gym & Fitness Centre

The centre has seen a resurgence since the extensive refurbishment in September 2022 which extended the gym, replaced the fitness equipment, extended the studio and added the members' lounge. Moving into

2024 the centre needs just 150 new clients to see it become a self-sufficient facility with the fitness team and Luke is keen to welcome back customers who have not yet returned post Covid, as well as new residents.

Local Bishop Alan Wilson



Rt Revd Dr Alan Wilson, Bishop of Buckingham

The Source wishes to let people know of the unexpected death of the Rt Revd Dr Alan Wilson,

Bishop of Buckingham. Our thoughts and prayers are with his wife Lucy and the family.

Bishop Alan lived locally and had deep friendships and pastoral relationships across both church and community in Bucks. He has offered remarkable leadership to the work of the Church of England in education and church schools over more than a decade. He was also a friend and advocate for survivors of abuse and a

strong ally and supporter of the LGBTQIA+ community for many years.

Just recently he had begun a well-earned sabbatical and was planning to use the time to plan and prepare for retirement in the next year. Alan loved God and loved God's church with a rare passion. He was a bishop who prioritised the parishes and clergy in his care above everything else and served the people of Buckinghamshire with devotion over a long and demanding ministry.

Exciting changes to Prestwood Recreation Ground and the Buryfield Great Missenden

At last, it is happening!

The adventure playground in Missenden will be closed from 26 February for 2 to 3 weeks whilst the replacement multiplay equipment is installed.

At Prestwood Recreation ground the new multiplay equipment is expected to be installed, adjacent to the existing play area at Gryms

Dyke, in mid April.

Work on the new circular paths around the Buryfield and Prestwood Recreation ground will start in May taking 5-6 weeks in each location. The parish council will keep you updated with progress on the parish council website, Facebook and local village associations. greatmissendenpc.co.uk/



The multi-play units measuring 8m x 6m x 4m

The future of HP16 The Source

The team that produces HP16 The Source is in need of help. There are many different roles required to deliver the good news of this area to all 6,000 homes and organisations five times a year. Currently, we are seeking someone to coordinate

the events pages, someone who can learn and grow into the front desk/reception role, someone to take on advertising, and someone to learn how the layout and design works. Please do get in touch with Colin Veysey (the editor) if you could offer your skills. **Contact: cvkingsp@aol.com**

Deadline for submissions and advertisements for our next edition, Issue 83, is Friday 2 April, 2024



Missendens Community Board

February 2024

From Board Managers: Kerry and Katrina

Partnership working is so important to the Community Board to help us support our local residents, businesses and community groups which is why over the last month we have been delighted to be involved in so many conversations, paving the way for an exciting 2024. We are also

pleased to have provided funding support for local projects and events including the newly refurbished planters on Prestwood High Street, carol singers for the Great Missenden Christmas event and along with our neighbouring boards, new minibuses for Chiltern Dial a Ride. With lots more great projects in the pipeline we can't wait to share these with you in the next edition!

Email: missendenscb@buckinghamshire.gov.uk

Missendens Community Board is going on tour! Over the coming months the Community Board team including your local councillors will be visiting a venue near you. Please pop along, let us know your views, what is important to your community, ideas for projects and your thoughts on the Board's priorities for the year ahead. Keep an eye on our Facebook page for more details.

Date for your diary: Next Community Board meeting Tuesday 12 March at 6.30pm on MS Teams

Kerry and Katrina, Missendens Community Board

or visit www.facebook.com/MissendensCB



Hopeful New Year for Great Missenden and Prestwood Revitalisation Group (GMPRG)

The GMPRG starts 2024 with a sense of optimism and a new, defined focus on delivering projects for Prestwood. This was presented and discussed at the AGM, which was well attended by many representatives of local groups and organisations.

Highlights of the past year include:

- The installation of the bench alongside the Prestwood Co-op, well received on local Facebook groups.
- Three bike racks have been provided outside Prestwood Village Hall.
- Cladding of planters on Chequers Parade in collaboration with Plan-It Prestwood
- A 'Bee Friendly Garden Competition' for local schools.

Through each of these initiatives GMPRG has learnt better

how to engage and work with other organisations in the village community and beyond.

A facilitated event after the AGM "How should GMPRG serve the community going forward?" generated interesting insights about building thriving community participation, and a useful model emerged. It was agreed that an effective and coordinated communications strategy is needed to increase local engagement, probably across multiple platforms. This should highlight what is going on in the community, what is needed and why it is important.

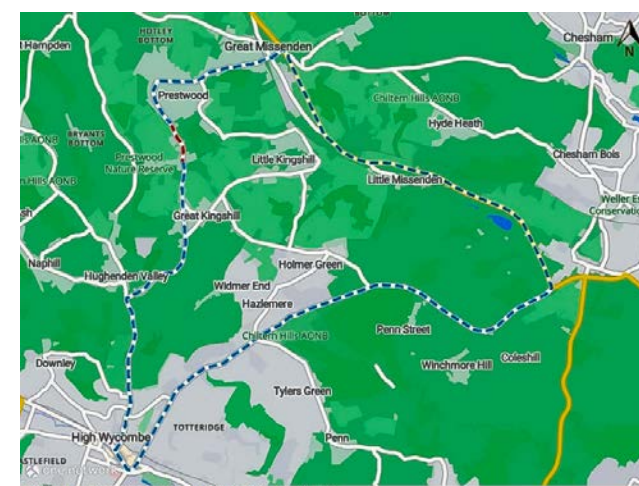
Efforts to build and sustain a robust communication strategy would be enhanced by a network of community organisations collaborating well. This healthy collaboration would be enhanced by an ongoing collective understanding

of what the community needs and the role each organisation plays in serving it. By working at all levels of this model, we can actively work towards greater community engagement.

GMPRG is excited to support the emergence of a new working group from the Prestwood Village Association to explore collective opportunities for serving Prestwood.



Great Missenden and Prestwood Revitalisation Group's recent projects



A4128 Road closure day and night from 2 April - 14 April

Notice has been given of a 24/7 road closure on the A4128 between Lodge Lane and Peterley / Perks Lane. Diversions will be in place. However, the official proposed diversion is very long. For example, to access Hughenden Surgery from Prestwood would be via Amersham and the centre of High Wycombe! This means that there may well be some who try to find their way by using the smaller residential roads of the area, potentially in a hurry. Please take care during this time. The works are to replace a broken sewage pipe.

Contents & contacts

HP16 The Source is run by a not for profit Community Interest Company HP16CIC - Registration No. 6338762
c/o Anthony Sykes, Mayertorne Cottage
Wendover, HP22 6QA

Directors

Colin Veysey (01494 862257) and
Anthony Sykes (01296 620830)

They would like to thank all who contribute in many different ways to make this enterprise a success. Your time and talents are very valuable and much appreciated.

© HP16 CIC. It is our policy to correct any errors in print. If you find an error of fact in these pages please let us know. We will carry any corrections or clarifications at the earliest opportunity. While every care has been taken to ensure that the data in this publication is accurate, neither the publisher nor its editorial contributors can accept, and hereby disclaim, any liability to any party to loss or damage caused by errors or omissions resulting from negligence, accident or any other cause.

HP16 - The Source does not officially endorse any advertising material included within this publication. However, we are proud to be associated with businesses in the HP16 area and hope that you will support them.

To protect the rights of authors, we have to state that all rights are reserved. No part of this publication may be reproduced, stored in any retrieval system, or transmitted in any form – electronic, mechanical, photocopying, recording or otherwise. However, if contacted, we are happy to assist you to obtain the rights to use articles or photographs in non-profit situations or arrange an appropriate payment structure for commercial applications.

HP16 - The Source is independent and non political. We thank all our contributors for their submissions, however, views expressed do not necessarily reflect the views of the editors.

**This community newspaper is printed on 100% recycled paper.
Please recycle it again.**

	Page number
Council & Community	2 & 3
Arts.....	4
Education.....	5
HS2 update & Environment..	6
Environment.....	7
Wellbeing.....	8
Sport	9
Church & Charity.....	10
Business	11
Events.....	12 & 13
Puzzles	14
Youth Source	15 & 16

Website: www.hp16.org.uk

Editor & Design: Colin Veysey 01494 862257

Youth Editor: Holly Burrows: hp16thesource@yahoo.co.uk

Reception: Anne Kaneko: frontdesk@hp16.org.uk

editor@hp16.org.uk

Advertising: Anthony Sykes anthonySykes000@gmail.com

Events: Philippa Wallin events@hp16.org.uk

HP16 - The Source Issue 82
March - April 2024



Produce at the Community Fridge

Update from the Community Fridge team

"THANK YOU for supplying much needed food to the community. Nobody should ever go hungry. Keep up the good work!" That's just one of the comments received celebrating the work of Prestwood Community Fridge.

If you haven't yet visited the Community Fridge, then you don't know what you're missing. Every week there's lovely fresh fruit and veg, fresh bakery items and lots in the fridge and freezer. It's all made possible by an amazing team of volunteers who collect and transport the food, run the Fridge premises, and provide this amazing resource for the people of this area.

In the months since it opened the Fridge has already become a well-loved resource for many. As one satisfied person

says, "All the volunteers do an amazing job, well done to all involved. It's astounding how much food would be wasted if it wasn't for these great people. I like to pop in on Saturdays to get some fancy bread and cakes for lunch. You never know what will be there, which is part of the fun!"

Look for Prestwood Community Fridge on Facebook to follow everything that's happening. The directors of the not-for-profit CIC, Catherine, Karen and Deiniol said, "We'd love you to join our volunteer family—which you can do online or in the shop. But most importantly, come and visit, before everything is gone!"

The Community Fridge is right next to Crossroads Garage and open from 9–11.30am on Saturday mornings and 9.30–11am on Wednesday mornings.

AGE UK Prestwood and Great Kingshill Luncheon Club

Urgent – Volunteer Cooks Required
AGE UK Prestwood and Great Kingshill Luncheon Club urgently need volunteers to cook on Tuesdays

The Luncheon Club meets in Prestwood Village Hall on a Tuesday (except the 1st Tuesday of the month and during August) between 1pm and approx. 2.30pm. A two-course lunch is provided with tea or coffee to follow.

The volunteer cooks organise the main

course and a dessert which would mean also having to do the food shopping.

There will be other volunteers to help prepare food, set up the kitchen dishes, serve food, wash the dishes, and tidy the kitchen. Preparation usually commences at 11am and the kitchen is cleared around 2.30pm (latest).

For further information, please contact
Jenny Plews at: 07975 720908 or
jennyp51@hotmail.co.uk.

Prestwood Area Community Transport

Could you offer a small amount of time to help a member of our community get to an essential appointment?

This volunteer much needed car scheme with 26 years experience would love to hear from you.

Many people are blessed with good support networks, with friends and family who are available to help them at times of need, for example with lifts to medical appointments - but PACT (Prestwood Area Community Transport) exists to help those who, for

whatever reason, don't have that support. If you are in need of help then please call the number below.

The team of PACT volunteers often feedback just what a privilege it is to help out in this way and they definitely enjoy the time together on the journey.



A PACT volunteers' social with York from Pantry @ 51

In March PACT is holding a thank-you supper for all its volunteers with catering by Wendy Davis and an after dinner talk by Karen van Oostrum of Prestwood Nature, as it appreciates those who give freely of their time to help to make HP16 a good place to live.

PACT also encourages its drivers to claim expenses for the fuel used on PACT journeys. If you are a driver and can offer a minimum of just one hour per month then please phone on 07968 641427 to find out more about volunteering.

Prestwood Area Community Transport

Volunteer Car Drivers' Scheme

We are looking for drivers. Would you be willing to give as little as one lift a month to someone in need of transport?

Please call us on 07968 641427



A new position of Parish Warden

Hourly rate £15.48; based in the parish office in the Memorial Centre

Great Missenden Parish Council is excited to be looking to grow its team. The Parish Council is responsible for the care of many local assets used and enjoyed by the community, and is looking to employ a Parish Warden to support this important work. Do you love the community that you live in? Are you looking for a role that offers you variety and flexibility, and also provides a sense of achievement? Then the council wants to hear from you.

The successful candidate will be as comfortable at a desk as they are outside in overalls. You will be computer literate and confident to carry out administrative

tasks, write short reports and summaries, and to request quotes from specialists as needed. You will also enjoy carrying out tasks outdoors, such as checking parish equipment and putting up noticeboards. There is also potential for this role to grow and take on further responsibilities in the future, which may include cutting back vegetation and weeding smaller areas, with relevant training.

This is a part time employed role of 10 hours per week by mutual arrangement and will be based within the parish. The ability to travel with your own transport within the parish is required.

Great Missenden Parish Council is committed to building an inclusive and diverse working environment and welcomes applications from all sections of the community.

Applications to be sent to clerk@greatmissendenpc.co.uk

Closing date for applications: end of March 2024

Change of Speed survey Wycombe Road, Prestwood

For some time the Wycombe Road has presented challenges to residents who live there as the speed limit is 40mph despite being a residential area.

This speed limit impacts those attending or leaving the numerous groups that access Holy Trinity Church and its facilities. It also impacts staff and customers of local businesses, e.g. Hildreth's Garden Centre, Peterley Manor Farm and Barn Kitchen, and Flower Pots Day Nursery - as well as Perks Lane residents.

There was recently a road traffic collision there resulting in the hospitalisation of a young resident of the village, again raising concerns about the speed limit.

Following requests from residents to the Parish Council, it has created a survey and would like as many residents as possible to

kindly complete it to give their opinion on this matter.

The section of Wycombe Road on which your views are being sought is shown on the map below. The blue line indicates where a reduction in speed to 30mph is proposed. The speed limit would remain at 40mph after the Peterley junction through to Great Kingshill. The survey is quick to complete, you can either scan the QR code here or go to the parish council website here:



greatmissendenpc.co.uk/wycomberoad/



Prestwood Litter Pick weekend

Wouldn't it be great to be in a village where the streets and green spaces are not littered with burger boxes, NO2 canisters, disposable vapes, glass bottles, plastic bags?

Want to be part of making that happen in Prestwood? You would be supporting the wildlife of the area and helping raise the morale of everyone locally.

Well, you can! On the weekend of March 23-24 there will be a village wide litter pick. Come along to the common

and collect litter pickers and bags, all you need to do is bring yourself, some road sense, and a pair of gloves.

Those with young children can be pointed to safer, more off road areas, but some tenacious villagers who can tackle the problematic areas such as Wycombe Road would be good. For those who have joined previous litter picking weekends, it's a great feeling to see the pile of rubbish at the end, and clear roads.

If you are interested in joining, as an individual, as a family, or if you run a local group, please contact Catherine Bunting for more info.

Email is catherine@hillandjago.co.uk



K&H Interiors

Our service includes:

- design advice and measuring for all your interior needs including: curtains, blinds, shutters, upholstery
- highly professional fitting service

Contact us to arrange an appointment at our Missenden Abbey studio:
kandhinteriors.com
info@kandhinteriors.com
01494 422390

Your Ideas • Our Designs • Exceptional Service

FREE CONSULTATION

New Year Library Events

Great Missenden Community Library has launched into 2024 with some new events. Bounce & Rhyme has restarted with a new volunteer and new props (courtesy of Friends of Great Missenden Library). This lovely lively session runs on Friday mornings at 10am and is suitable for all pre-schoolers. Ali is happy to try different songs and rhymes so drop in and suggest your favourites.

In partnership with Rennie Grove



New books for the Great Missenden Library

Peace, a Compassionate Café will be held on the last Wednesday of every month 10-11.30am. This coffee morning is facilitated by trained volunteers allowing people to come together for friendship and a listening ear, in a safe and welcoming space. Great Missenden is very proud to be the first Library in Buckinghamshire to host the Compassionate Café.

The Library is very excited to announce that on 1 March at 7.30pm it will be holding its first Library Film Night which will then run every month with some children's films being shown during school holidays. Due to the terms & conditions of the license it is unable to advertise the film outside the library – however, it will be dropping clues on the Friends of Great Missenden Facebook page and further details will be available in the Library. Booking is required. Tea and coffee will be provided but please bring any other refreshments and snacks.

Library Manager Gill also wants to thank The Friends of Great Missenden Library for spending £2,000 on books specifically for Great Missenden Library in the last year. The Library really appreciates the support of all the Friends who enable it to have so many new books on the shelves.

The Wick Trimmers and BBOWT

On Tuesday 19 March, Bucks Beds and Oxon Wildlife Trust (BBOWT) is presenting 'The Rhythm of Nature' in words and music with local folk band, The Wick Trimmers, at the Great Missenden Memorial Centre (details below).

The following night The Wick Trimmers are playing at Chequers Folk with a brilliant, internationally renowned, musician, who has opened shows for

Ed Sheeran and Newton Faulkner, to name but two. His ability to express the human experience with wit and intensity has earned him a reputation



The Wick Trimmers

as one of the UK's most original songwriters and performers. Plus, for those guitar nerds out there, his unique guitar technique is not to be missed.



Jake Morley

BBOWT: The Rhythm of Nature Tues 19 Mar, GM Memorial Centre, 7.45pm. Cost: £7.50 inc. refreshments. Doors open 7.15pm. Booking essential bbowt.org.uk/events
Chequers Folk: Jake Morley and The Wick Trimmers, Wed 20 Mar, Cherry Tree Farm barn, 8-10pm, Tickets £10 on the door.

The Source Cartoon

by Lyndon Mallet



Prestwood Players

The wonderful, rather eccentric, British institution of pantomime is well and truly alive in Prestwood (Oh yes it is!). The Prestwood Players produced a wonderful show with excellent performances and the inevitable audience participation.



Red Riding Hood pantomime at Prestwood Village Hall



Prestwood Players

On the back of the successful Pantomime, *Red Riding Hood*, Prestwood Players are hoping to bring you *A Month of Sundays* written by Bob Larbey – directed by Sandie King, a

A Month of Sundays

by Bob Larbey



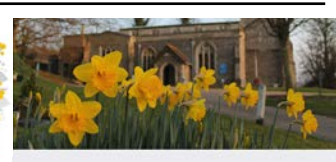
comedy about how to grow old with a sense of humour. Cooper, the main character has gone into a home and begins to design his life around flirting with female staff, banter with his best friend Aylott and regularly taking note of his 'physical deteriorations'.

Dates: Friday 17 and Saturday 18 May 2024 at Prestwood Village Hall. Tickets will be available in April via <https://www.ticketsource.co.uk> and available on the website www.prestwoodplayers.com

75th Anniversary Concert Great Missenden Choral Society

To mark its 75th Anniversary, Great Missenden Choral Society (GMCS) will be performing the spectacularly beautiful and profoundly moving requiem by the great romantic composer Johannes Brahms. Unlike most other requiem settings which celebrate the rite of passing of souls into heaven, Brahms focuses on offering tender consolation to those still living. At heart, this work aims to reconcile us to the majesty and awe of the great cycle of life and death, while giving glimpses of the sweetness and glory of the hereafter.

The Choir will also sing a selection of short unaccompanied works by Brahms's contemporaries Anton Bruckner, including his famous *Locus Iste*, and the great English composer Hubert Parry. The Choir will be joined by pianists Nicholas Robinson and Mark Shepherd, as well as star local



soprano Lucy Knight.

For more information about the choir and opportunities to join as a singer or a Friend, go to www.gmcsonline.co.uk

Are you a keen singer and free on Monday evenings?

GMCS is a friendly, well-established choir looking to recruit new members and expand its horizons! Rehearsals are the Autumn and Spring terms for concerts in December and in the Spring. They take place on 7.45pm Monday evenings in the Oldham Hall, Church Street and you are warmly invited to come and listen in at one of the rehearsals. Do please call or email hello@GMCS@gmail.com beforehand.

GMCS welcomes singers of all ages and has some bursaries available for young singers between the ages of 16 and 25, to cover membership fees.

Tickets £17.50, (students and children £10.00) will be available from Wye Country, 36B High Street, Great Missenden or via www.gmcsonline.co.uk

Firth Singers Spring Concert

As we emerge from the winter darkness, the Firth Singers will be celebrating the arrival of Spring with a wonderful concert entitled 'Beauty and Love'. The Firth Singers is an auditioned choir which has been singing beautiful choral music across the Chilterns and beyond for more than 10 years.

The programme is a diverse repertoire including

works by Benjamin Britten and Morten Lauridsen as well as some well-known jazz favourites, all based around the eternal themes of love and beauty.

To be held at St Mary's Church, Chesham, on Saturday 9 March at 7pm, the event will also feature the choir of Tylers Green Middle School, which will be performing three songs, including 'The Rose', made



famous by Bette Midler.

The evening will also feature a rare performance of 'Sakura', based on a Japanese folk-song. Composer and choir member Andrew Melvin will be joined by Shima Kobayashi on harmonica to complete the evocative soundscape.

Tickets are £15 for adults, with students at £5 and children under 18 attending free of charge. To book seats please email: thefirthsingers@gmail.com





Equipment in the CofE School outdoor play area

News from Great Missenden CofE School

This term Great Missenden School unveiled its newly created outdoor play areas designed specifically for Early Years Foundation Stage (EYFS) and Key Stage 1 (KS1) pupils.

The outdoor play spaces are equipped with a variety of features to promote physical activity, imaginative play, and social interaction. With vibrant climbing structures, sensory gardens

and interactive learning stations, the new play areas offer children an engaging and immersive experience, encouraging them to explore, learn, and have fun outside.

Feedback from the children has been overwhelmingly positive, with many expressing their eagerness to spend as much time as possible outdoors!

Great Missenden CofE School Perform at Young Voices 2024

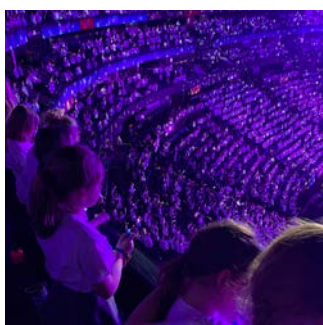
On Wednesday 31 December Great Missenden school took the whole of year 5 to the O2 to take part in young voices 2024. It was a spectacular experience for children, staff and parents. The children sang as part of the largest school choir in the world

comprising of over 9,000 children!

The children were an absolute credit to the school and the event was phenomenal. It was a long day with many months of rehearsals leading up to their performance and the school



Great Missenden school choir at the O2 is so proud of them. It was a very memorable day for all and heartwarming to hear children describe it as the best moment of their life!



Young Voices 2024 at the O2



The whole of year 5 Great Missenden CofE School

Update on the cyber attack at The Misbourne

The Misbourne is reaching out to past and present members of the school community who may have been affected by the criminal cyber attack that happened at the end of last month.

Ever since the ransomware attack, the academy in Misbourne Drive, Great Missenden, has been working closely with the National Cyber Security Centre, the Information Commissioner's Office, the police and other specialists. It has been established that a limited amount of personal data relating to the period 2005 to the end of January 2024 has been stolen.

The academy is contacting its current staff, families and students where their data is affected, with a description of the data that has been stolen and advice about how to protect their security online and will be attempting to reach other affected people where possible to contact them directly.

Any former staff or students, or anyone else who was connected to The Misbourne during the period 2005-January 2024, who wish to know if they have been affected by the cyber attack, should contact its designated email address: cyberresponse@themisbourne.co.uk

Headteacher, Mr Rich Peters, said: "This was an upsetting situation that we take extremely seriously, and we are enormously grateful for the expert help and advice we have had from the authorities.

"I would also like to thank the community again for its support and patience during this challenging time – it is greatly appreciated."



Sister Act Jr. performance

Sister Act Jr. showstopper

The Misbourne recently captivated audiences with its show-stopping production of Sister Act Jr. The show ran for three nights from 6-8 February, leaving standing-room

only on its final night as parents, students and members of the local community flocked to enjoy the feel-good show.

As a whole-school production, the cast included students from all years across the school, from Year 7 to Year 13. They were supported by a live pit band made up of Misbourne student musicians. In addition, many more students were involved behind the scenes as stage hands.

Speaking about the show, Rich Peters, Headteacher, said, "This show was a fantastic achievement for all the cast, crew and pit band members. Thank you to all those families and visitors from local primary schools for their heartwarming feedback. If there is one event that epitomises the Misbourne Family at its finest, it is the Whole School Show - students across all age groups, with a diverse range of talents, working determinedly and enthusiastically alongside staff, technical crews and external professionals to deliver fantastic entertainment. The laughs and tears of joy on display at the final curtain call were testament to the lasting memories that have been created."



Mayertorne Cottage
Bed & Breakfast
Wendover HP22 6QA
Tel: 44(0)1296 620830
www.mayertorne.co.uk

Email:
anthonyshykes000@gmail.com

Gateway School's Art Extravaganza

Invitation to the Community to engage with the 'Take One Picture' exhibition on Saturday 9 March, 11.30am-12.30pm



Gateway School is delighted to announce its participation in the National Gallery's prestigious 'Take One Picture' initiative once again. This national primary school project has become a cornerstone in promoting art education among 4-11 year old children across the UK. This year's chosen masterpiece, 'The Courtyard of a House in Delft' by Pieter de Hooch, promises to captivate the imagination of both the children and the local community alike.

Gateway School invites everyone to be a part of this immersive experience

as doors will be open for a special exhibition on Saturday 9 March from 11.30am to 12.30pm.

The National Gallery's Take One Picture initiative is a unique and innovative way to integrate art into the curriculum. Each year, a single artwork is selected as a focal point for educational exploration. The goal is to encourage interdisciplinary learning, making connections between art and various subjects like maths, science, English, and history. This approach sparks imagination, creating a deep and lasting appreciation for the chosen masterpiece.

The result of this artistic exploration is a stunning display that brings together the collective creativity of Gateway School's children. The exhibition serves as a testament to the transformative power of art in education, illustrating how a single painting can inspire a diverse range of projects across different disciplines.

This unique opportunity allows the local community to appreciate the creativity and talent of Gateway School's pupils and enjoy a morning of immersive art.



'The Courtyard of a House in Delft' by Pieter de Hooch (courtesy of the National Gallery)

Gateway School invites the local community to be a part of this year's immersive 'Take One Picture' experience, showcasing the children's interpretations in a special exhibition. Friends, family, and neighbours are encouraged to register their interest by scanning the QR code or emailing pa@gatewaysch.co.uk by Thursday 7 March.



LIMITED SPACES

Rachel Harris ★

Professional Tutoring Ltd

hello@rachelharrisprofessional tutoring.co.uk

11+ tuition

Saturday mornings, Great Missenden Memorial Centre
Tuesday afternoons, Wing Community Library
Year 4 & Year 5 classes available

HS2 update

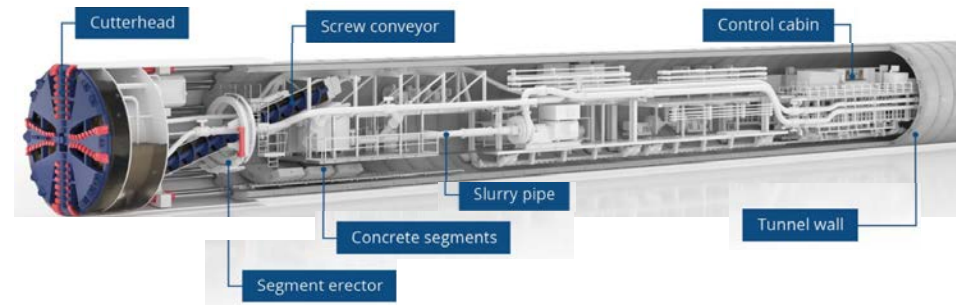
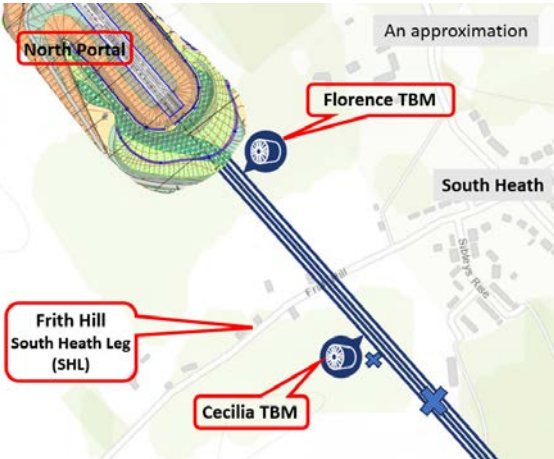
Cllr Mike Johnstone (GMPC) HS2 lead

By the end of February, the tunnelling of the 10-mile Chiltern Tunnel should be complete with the two TBMs coming out of the ground at the North Portal and a further two sinkholes have been formed

- 1. Chiltern Tunnel – tunnel progress and a futher two sinkholes
- 2. North Portal
 - > Extended working hours
 - > Water management and discharge into the Misbourne
- 3. Wendover Dean viaduct (WDV)
- 4. Further roadworks and information events

1. Chiltern Tunnel

On 20 February, the Florence TBM was 56m from the North Portal and Cecilia 465m away from the portal headwall, so nearing completion. The next phase once the TBMs have cut through is the dismantling of them which will take up to 6 months. Each TBM is 170m in length, weighing 2000 tonnes. The outside diameter of the cutting head is 10.26m with an internal diameter of 9m.



This is a photo (right) of the North Portal headwall ready for the TBMs to break through. 18 metres deep within the cutting



..... and in the meantime, two further sinkholes!

These occurred near Frith Hill (SHL) where the TBMs are now close to the surface and the ground is friable chalk with a large amount of clay and accompanied by heavy rainfall.... so not an unexpected occurrence.

The image at the beginning of this article showing the approximate location of the two TBMs also shows two crosses which are the approximate locations of the two recent sinkholes.

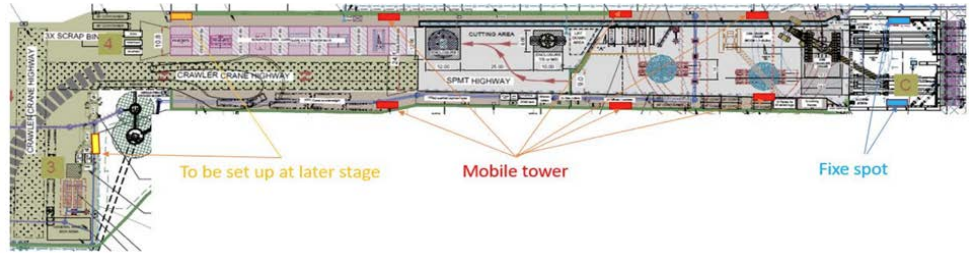
The smaller one formed on February 7 and is about 2m diameter. The larger one on February 12 and was about 6m diameter. There is about 150m between the two sink holes and have been fenced off. They are now stable with the area being monitored daily up to March 10 to allay residents' concerns.



2. North Portal > Extended working hours

The following main activity is the TBM breakthrough and dismantling (24/7) to take up to 6 months for which the section 61 consent will be extended to cover work at night. The prospect of night working has outraged the residents near the portal; working up to 11pm when the barrettes were being built was bad enough but overnight is the last straw. Sarah Green MP has been contacted and has asked HS2 to explain why extended hours are necessary and what mitigation will be put in place. Further information has been requested from the HS2 contractor ALIGN. They have operated with 24/7 working hours before (in addition to the tunnelling operations) under section 61 consent in areas of the south portal and Colne Valley. In this location at the north portal, activities will be carried out 18m below the surface in the cutting which will shield noise and light.

The lights that will be set up at the bottom of the cutting along the edge of the works, will be of low luminosity and pointing downwards – see positions marked in red in the image of the cutting below:



Noise reduction panels will be erected around the working area to deaden any noisy work and no noisy operations will be carried out at night on the surface. Monitoring of noise and light pollution will be carried out regularly.

Any complaints need to be reported to the help desk, which has been given instruction to forward the details direct to the night duty manager; so as usual details please of what, when and for how long with your location will be required.

2. North Portal > Water management and discharge into the Misbourne

Just before Christmas a large quantity of surface run-off water was pumped from the attenuation ponds near the Link Road compound into the ditch along the A413 towards the A413/footpath GMI/2 underpass and into the duct under the road to the river Misbourne.



EKFB had permission from the Environment Agency (EA) and the purpose was to reduce the water held in the attenuation ponds to make space for further rainfall which has been significant recently!

The procedure seems to be to pump when it is raining if the ponds are getting full. Thames Water has checked that the water in the outflow is clear. Large quantities of water coming down the river Misbourne has aggravated water problems downstream especially at the sewage works in Amersham and Chalfont St Peter.

3. Wendover Dean viaduct (WDV)

The 450m long Wendover Dean Viaduct (WDV) is nearly opposite the Firecrest pub around halfway between Great Missenden and Wendover.

EKFB has just started a year-long bridge slide to push almost half a kilometre of deck into position. The WDV will be the first major railway bridge in the UK to be built with a 'double composite' of steel and concrete. The increased strength of the composite deck design allows it to be slowly winched forward and so slide over the viaduct piers on teflon pads in a push of 90 to 180m long sections.

With each new section being attached behind the other, the weight of the deck will increase with each push, up from an initial 590 tonnes to 3,700 tonnes in two more spans planned in the summer and autumn of this year.



These images and video were provided by HS2 and show the impressive engineering task: - Video: www.tinyurl.com/wdvpiers

4. Further roadworks and information events

Frith Hill - UKPN has confirmed that two-way lights will need to be in place on Frith Hill for the joiners to join cables below ground for the portal, but so far we have not received any dates - probably waiting for the TBMs to pass. Recently Balfour Beatty on behalf of Bucks Council has dug some trial exploratory holes. Hopefully this will lead to the road and footway being rebuilt!

The A413 towards Wendover

Date	Location	Works	Traffic Management
11 & 27 March	A413 London Road	Pier and utility inspection	Daytime Lane closure
4 – 9 March 29 March – 2 April	A413 London Road	Excavation of piers for SDV	Overnight closure (8:30pm – 5:30am)

Road closures are subject to change and could potentially be withdrawn or moved to later in the year. To stay informed of works and to keep up to date, you can register for email updates on the HS2 website or visit the community website at www.hs2.org.uk/in-your-area or contact the Helpdesk Team on 08081 434 434

Information event: Thursday 7 March: an information drop-in session will be held in the Great Missenden Memorial Hall from 3 to 7pm so please DROP-IN!

Holding HS2 to account Email a complaint with a title containing the word 'COMPLAINT' to: HS2enquiries@hs2.org.uk, with copies to clerk@greatmissenden-pc.co.uk so that we can raise it direct with the contractor concerned and send a copy to the Bucks Council HS2 team at EWRANDHS2enquiries@buckinghamshire.gov.uk



Prestwood Nature highlights the need to protect the environment

Did you know the UK has pledged to protect 30% of land and sea for nature by 2030? The UK signed up in December 2022 to this '30 by 30' international pledge at UN's Biodiversity Conference, to reduce the loss of biodiversity caused by human activities. But how can we protect what we don't know we have? Your local conservation charity needs you!

Prestwood Nature, now in its 21st year, is a volunteer-run conservation group for Prestwood, Great Missenden, the Hampdens, the Kingshills, North Dean and Speen. The charity is now seeking new volunteers to help run its conservation sites and other activities. A range of skills are in demand, from offers of practical help at work parties to lending social media expertise or taking up one of the trustee roles in the charity.

'Our environment is in great need of protection' notes Helen Matthews, the charity's Chair, 'As climate change is forcing nature to adapt, we're trying to track those changes. For example, we take part in the UK Butterfly Monitoring Scheme – something we've done since 2006.' Prestwood Nature also seeks to help educate and inform, to help people better support local wildlife – starting with nature

in their own gardens. Helen also highlighted the way that Prestwood Nature's walks and talks mean we can all be better informed, but she added, "We need more (welly) boots on the ground!"

If you have a keen interest in the natural world or would like to learn more about it while supporting Prestwood Nature, do get in touch with Helen and her team. There is a new volunteering page on the website, please scan the QR or see below.

<https://prestwoodnature.org/wp/volunteering/>

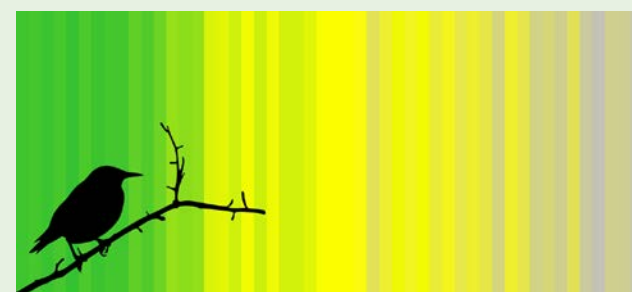


UK Moths have declined by 86% from 1970-2018 as this 'BiodiversityStripes' infographic depicts
Image source: biodiversitystripes.info/ukmoths/moth

Biodiversity Stripes

The images below are Biodiversity Stripes, which provide a visual representation of the change in biodiversity over time, often to show the levels of decline since 1970. The highest level of biodiversity is coloured bright green. Lower levels of decline are shown through yellow to grey colours, and greater declines are shown by darker greys.

Biodiversity stripes in the UK are used as public sector information from Defra, UK, Biodiversity Indicators 2021, licenced under the Open Government Licence v3.0



This 'Biodiversity Stripes' image depicts the decline of 55% in UK Farmland Birds from 1970-2019
Image source: biodiversitystripes.info/ukfarmlandbirds/bird

Find Prestwood Nature on Facebook at facebook.com/groups/prestwoodnature/ Instagram @prestwoodnature Web www.prestwoodnature.org

Uncle Herbert's Prize Allotment

from Lyndon Mallet

We knew Uncle Herbert's plot was much revered locally, so we thought we'd ask him the secret.

'Work it,' he growled. 'Let that bit of ground know you don't take it for granted...' he brandished a plump, fresh onion with evident pride... 'and here's what you get for it – better and fresher than anything you'll find wrapped in plastic in them big superstores.'

'You don't approve of supermarkets then?' we put the question cautiously.

'Got nothing against 'em, just like to grow stuff myself. Mind you, my way ain't for everybody.'

'Are you saying it takes special talent?'

'It's a state of mind. Some people think anyone can wave a few garden tools around and all the good stuff will pop up like magic – beans, spuds, carrots, greens, anything you could wish for. What these good folk don't know is, an allotment's for life, not just for a weekend workout.'

We left Uncle H treading his fork in to turn over rich soil that looked good enough to eat.

In a manner of speaking it soon would be.

Hedge planting for the Misbourne Greenway

The Chiltern Rangers invite you to join them in planting a hedge along the Misbourne Greenway – a new traffic-free walking, wheeling and cycling route between Wendover and Great Missenden. The route is being constructed by Sustrans making it easier for everyone to walk, wheel and cycle.

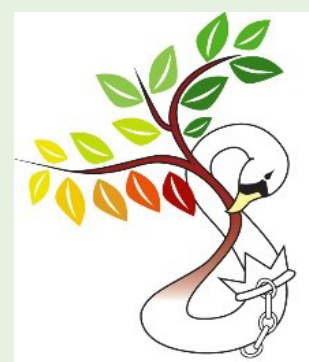
The rangers have a hedgerow planting project in Great Missenden and are looking to engage lots of community groups and volunteers – there is 800m to plant and an estimated need for 20-30 people each day. The meeting point is at The Firecrest Saturday 2 Mar at 10am



Dates: Saturday 2 March and Tuesday 5 March
www.eventbrite.com/cc/misbourne-greenway-hedge-planting-3075539 or scan the QR code



Misbourne Greenway from Road Farm



The Bucks Tree Club Dendro Day

Dendro Day is Sunday 3 March (always the first Sunday in March)

Tree lovers get together on this day to share the company of their fellow enthusiasts to plan visits to some of Britain's great arboreta like Westonbirt or Kew or maybe a tree collection nearer to them

or perhaps, start organizing a tree trail for their local town.

Trees not only capture carbon and encourage wildlife but wherever they are, they can be enjoyed for their appearance through the seasons and the enhancement of towns and the countryside – the more you learn about them the more fascinating they become.

Little Friars Arboretum, with nearly 200 specimen trees near Chesham, is the venue in Buckinghamshire where tree enthusiasts will gather for Dendro Day. As usual, when such enthusiasts get together, tree discussions ensue and one idea to be discussed is recipes for spruce beer, a therapeutic beverage used by Captain Cook.

Local festival celebrates the chalk of the Chilterns



From January to April 2024 the Chalk, Cherries and Chairs (CCC) celebrates the special chalk bedrock of the Chilterns Area of Outstanding Natural beauty (AONB) with a Chiltern Chalk festival. Lots of events are planned, from wildlife talks to practical habitat management, river-dipping to geology walks, all ending with a big celebration of everything chalky at the Chinnor and Princes Risborough Heritage Railway.

The characteristic chalk and flint of the Chilterns formed around 100 million years ago under a warm, tropical sea as the remains of millions of microscopic algae fell to the seabed. The same movements of the Earth's

crust that formed the Alps caused this thick bed of chalk to buckle and emerge from the retreating sea, exposing it to the elements and eventually creating the landscape we see today – one rich in wildlife and history.

For many millennia, people have used and celebrated the chalk here. From Stone Age flint tools to modern cement, grassy slopes to clear streams, the chalk bedrock has provided the means for shelter, food, agriculture, industry, and art. Chilterns Chalk celebrates this connection to our landscape, both ancient and modern. Events where you can find out more about this special rock:

Guided walk round College Lake: 24 March

Explore the wildlife and geology of this former chalk quarry now managed as a nature reserve by BBOWT.

Get dipping! 3 April

The whole family can look for minibeasts in the clear chalk waters of the River Misbourne at Old Amersham – wellies are a must!

Chalk day at the Railway! 11 April

Stalls, activities and talks at Chinnor and Princes Risborough Railway. Take a leisurely train ride and find out more about the heritage and geology of the Chilterns.



P. KERNAN

TREE SURGERY

All aspects of tree work undertaken
Hedges maintained
Fully qualified—Fully insured

Local Authority Approved : Free Estimates
Firewood For Sale

Tel: 01296 330501 Direct: 07763 073663
94 Tring Road, Wendover, HP22 6NX



Opportunity to work with Countryways CIC

Would you like to work for a care farm? Countryways CIC needs you!
Volunteer Finance Trustee and paid Livestock Worker needed

As Countryways CIC celebrates its 10th anniversary this year, the Directors are looking for some talented people to help take it forward. Could it be you?

Countryways is a care farm based on a working farm outside Great Missenden. It provides involvement and interaction with animals, tools and countryside learning for individuals, schools, special interest and community groups and especially for those with specific health or educational needs. The heritage farm environment helps people to feel less anxious, more confident, independent and included. Wendy, Duncan

and David, the care farm founders and key workers, are passionate about linking the local community with farming, food production, nature and wellbeing. Due to its Finance Director retiring, Countryways is seeking a volunteer Finance Director to join its existing leadership team. And it is also recruiting a paid livestock worker to assist with their very important animals (VIAs!).

If you are interested in either key opportunity or further vital volunteering, please head over to the website for more information: www.roadfarmcountryways.com/jobs or email Amina at vols.rfcountryways@gmail.com.

Family Roald Dahl Walks

Bring the family for a walk with a difference this year. Throughout 2024 the Roald Dahl Museum will be running its popular My Year walks once again. On the fourth Sunday of the month, you can put on your boots and head out of the Museum into 'Roald Dahl Country' to explore the woods that inspired so many of the stories.

Led by the Museum's Michael Parkhouse, the walks are inspired by Roald Dahl's last book, My Year. This book was published posthumously and is currently only available from the Museum shop. It's a charming month by month account of Dahl's love of the outdoors and the local Chilterns countryside.

Each My Year walk features extracts from the relevant chapter of My Year and other seasonal

readings from Roald's most popular stories. You'll get to explore the woods that inspired Fantastic Mr Fox and Danny the Champion of the World, just a short walk from Great Missenden High Street.

Stomp through leaves and puddles, breathe in the fresh air and experience the outdoors whatever the season.

There's also the option to pre-order a hot drink and scone to be waiting for you at the Museum when you get back from your travels.



Michael Parkhouse with Roald Dahl's last book 'My Year'

To find out more visit roalddahlmuseum.org/see-whats-on

CHAMELEON SINGLES GROUP

Early events for 2024 have included a Coffee Morning in Princes Risborough, Lunch Club and an evening social held over Zoom. The Pub Night at the end of January served as the AGM. This is a chance to look back and then to plan events for the future.

Chameleon once again aims to do some day trips this year, including one to the coast and to Guernsey. Walks will continue on a regular basis throughout the year.

At home evenings, take-away food nights and the occasional Quiz also feature in the

bi-monthly events programme. Both the group's Lunch Club on the second Friday and Pub Night on the last Thursday of the month are ideal for newcomers giving a chance to meet other members.

If you are single, 40-60s, looking for new friends and a great social life then please do give the Chameleon Singles Group a try? Several people from Prestwood and Great Missenden and the surrounding areas have got involved and you would be very welcome too.

To find out more call contact Terrie on 01494 445816, Trevor on 01494 529067 or e-mail: info@chameleonsingles.org.uk. Visit the group on-line at www.chameleonsingles.org.uk or search Facebook.

What is Social Prescribing?

Many things that affect our health can't be treated by doctors or medicine alone, such as loneliness, debt, or stress due to financial pressures or poor housing.



A common question is, "Do I have to be referred by my GP?" The answer is, "No!" You can self refer - simply contact the team.

Social prescribing connects people to non-medical support to address these issues and other unmet needs.

This could involve a Social Prescribing Link Worker or an equivalent role:

- Helping someone isolated to join a befriending group, an art class or a community gardening project, based on what works for them.
- Connecting someone struggling with financial stress to a service that helps with managing debt or claiming benefits.
- Supporting someone with dementia to join a dementia choir, enabling them to maintain a sense of social connection.
- Working with someone with high blood pressure to take up a form of exercise that they're comfortable with.

Social prescribing can help change the circumstances that cause people to be unwell. It can empower people to manage existing health problems, get the right benefits or get back into employment. It can also help people to connect and grow in confidence.

The Mid Chiltern Primary Care Network Social Prescriber Link Workers work across five local surgeries - John

Hampden Surgery, Prospect House Surgery, Hughenden Valley & Chequers, Amersham Health Centre and Rectory Meadow Surgery. The social prescribing team run a Talking Café every Thursday at the Chiltern Lifestyle Centre, 10-12pm - if you would like to find out more about social prescribing to see how they can support you, or if you just fancy a coffee and a chat why don't you go down and meet the team - Julie and Sarah would love to meet you.

Julie Dennis Social Prescriber
Team Manager - Mid Chiltern PCN
BOB Primary Care Mentor
E: julie.dennis7@nhs.net



Sarah and Julie - Social Prescribers



Your mental health matters

Are you feeling emotional, overwhelmed or in a crisis?

- Suffering loss and grief
- Anxious, stressed, or depressed
- Explore and resolve a traumatic experience
- Struggling with a relationship
- Figure out where you're going in life
- Build confidence and self-esteem



It's important to talk and it's OK to ask for support, contact and connect with me to see how I can help you... don't struggle on your own.

Call today to arrange a FREE 20 minute consultation, without obligation, on 07952 524257

Sue Lemon Counselling
www.suelemoncounselling.co.uk • 07952 524257

bacp | professional
counselling
authority
Registered Member 96259
MBACP

Looking ahead to the new cricket season



Practice sessions in the new Sports Hall at The Misbourne School

In the depths of winter, when it's dark at tea time and the ice has to be scraped off the car in the morning, it's hard to imagine that quite soon the days will be warm enough and long enough to play cricket. But it's true, and at Ballinger Waggoners Cricket Club preparations are well under way for the first match of the season.

Although most junior sessions have now

finished, adult net sessions are being held on Saturdays in the new sports hall at the Misbourne School starting on 24 February for those who could do with stretching bowling muscles and getting their eye back in with the bat. Please contact the BWCC (membership@bw-cc.co.uk) if you're interested.

Off the field, the club has been busy obtaining grants from the ECB to improve the non-playing facilities. The fruits of that work can be seen in a host of improvements to the pavilion – plus a new shed! If you're in the vicinity of Ballinger on a Saturday morning during the cricket season then do pop into the pavilion cafe for a coffee and see what's been happening.

Ballinger currently plays in the Berks, Chilterns & Mid-Bucks League but talks are being held about joining the larger Thames Valley League with effect from 2025, which would result in the opportunity to broaden and strengthen the range of opponents. The club always welcomes new junior and adult members so please get in touch for more details.

Spring is just round the corner and cricket will not be far behind.

Cycling with the Chiltern Hills Group



Cycling the rolling Chiltern hills
Photo: Cycling UK
Chiltern Hills Cycling UK group offers both led rides and coffee pots every Sunday. With spring on the way now is the time to get out on your bike and enjoy the warmer

days after winter. There are a variety of rides along with coffee stops all taking place on quiet routes in the countryside that surrounds our local area.

There is something for everyone of all ages and abilities and both pedal bikes and e-bikers welcome. Cafes such as Hughenden Valley Coffee Shop, Hildreths at Prestwood, The Potters Arms at Winchmore Hill and Costa or Matilda's in Great Missenden regularly feature in the club rides list so you are never far from home.



While most rides are easy paced and suitable for all, the group does have some moderate and slightly longer rides in the monthly rides list too. Occasionally there is also a chance to do some off-road riding.

Chiltern Hills Cycling UK has a Zoom social on the 1st Thursday of each month at 8pm and a meet up clubroom at Little Kingshill Baptist Church on the 8-10pm on the third Thursday.

For more Information: Web: www.southbuckscycling.org.uk
E-mail: publicity@southbuckscycling.org.uk



Tom and Ross the Co-Head Coaches



New coach Vlad

Tennis club expansion in anniversary year

2024 is a big year for Great Missenden Lawn Tennis Club. It's both the 120th anniversary of the club being formed and it's also set for some exciting additions.

Firstly, the Club announced an expansion of its coaching team. Head Coach Ross Murray has been leading coaching since being appointed last year. At the beginning of January, Tom Smith joined him as Co-Head Coach. They have now introduced a tennis coach who is new to the area, Vladyslav Romanchenko.

Ross explains: "Asking Tom to step up to be our Co-Head means that he and I can share all of the non-tennis tasks and spend more time coaching players. We have loved getting to know Vlad since he moved from Ukraine with his family. We are sure that he will be popular with

members and non-members alike."

Secondly, the club has been given planning permission to convert one of its underused courts into 2 padel courts. Padel tennis is the fastest growing sport in the world and is popular with people young and old.

Crucially, the padel courts will be open to non-members as well as members. Roger Hill, Club Chair, said: "We are looking forward to getting on with the build of this great facility which we will open to the local community. The courts and associated tree planting are part of our long-term commitment to the health of the local community and environment."

More news on the progress of the padel court build and its availability will be posted on www.gmltc.com.

www.gmltc.com email: membership@gmltc.com

Six Nations Rugby Live coverage showing in Great Missenden Baptist Church

Church will be open 30 minutes prior to Kick Off times shown below



Sat 9 March
Italy vs Scotland 14:15
England vs Ireland 16:45

Sun 10 March
France vs Wales 15:00

Sat 16 March
Italy vs Wales 14:15
Ireland vs Scotland 16:45
England vs France 20:00



Abbeyfield Great Missenden

An independently run warm, friendly sheltered house for the elderly in the heart of Great Missenden village

To discuss further, please contact Carol Lauder-Ross, House Manager

Tel: 01494 865026

Email: info@abbeyfieldgreatmissenden.co.uk

Abbeyfield House

Link Road, Great Missenden, Bucks HP16 9AE

Visit our website www.abbeyfield.com




Frances Cutler
HANDMADE CURTAINS AND BLINDS

I make curtains, blinds, pelmets, cushions, valances and all soft furnishings in my garden workroom near Great Missenden. Please telephone or email for an initial consultation and visit my website for further details.

7 Lappetts Lane, South Heath,
Great Missenden, Bucks HP16 0RA
Telephone: 01494 862285
Mobile: 07913 097527
Email: francescutler@btinternet.com
Website: www.francescutler.co.uk

Remember loved ones this spring with Forever Red Roses

Florence Nightingale Hospice Charity has partnered with the magnificent Waddesdon Manor to launch a very special Forever Flowers event to celebrate and remember loved ones this spring.



Florence Nightingale Hospice Charity red rose



A stunning, temporary display of 750 bespoke metal Red Roses will be installed in the Rose Garden at Waddesdon Manor, near Aylesbury in April. Each flower will represent the life, love and memories of a loved one.

The Charity is offering you the opportunity to be a part of this event by dedicating one of these limited Forever Red Roses, and an invitation to a private

viewing of the display on Monday 15 April whilst the grounds are closed to the public. The installation will then remain on display to the public for two weeks. Once the installation is removed, those who have dedicated a flower will be able to take it home to display as a forever keepsake.

By dedicating a Forever Red Rose you will be helping us to provide excellent local hospice care and be there for more patients and families across Buckinghamshire and its borders.

To dedicate a Forever Red Rose visit www.fnhospice.org.uk/foreverflowers or call 01296 429975 for more information.

Cream Teas at St Peter & St Paul

Cream Teas on Sunday afternoons will start again at St Peter & St Paul Church on Easter Sunday. They will then run from early May until September. Teas with a range of cakes and scones are served on Sunday afternoons between 3pm and 5pm. All the cakes and scones are prepared by volunteers in the community so the variety each week is wonderful.

Cream Teas have been running at St Peter & St Paul since 1985, apart from, of course, during

the lockdown. When restrictions were reduced a little during Covid, 'not quite cream teas' were arranged in the churchyard.

There is music during the teas on most weekends. Many local groups of musicians, from classical guitarists to choirs, are very keen to support the Teas, and they often bring their

fans along to hear them and tuck into the cakes.

The Teas are a good community activity, often bringing in many regulars from the local area.

They also make a significant contribution to Church funds, which is very important in these difficult times.



Homemade Cream Teas at St P&P

For more information, look at the Church website: missendenchurch.org.uk

News from the Rotary Club of Great Missenden

The Rotary Christmas Santa

The Rotary Club of Great Missenden had a busy run up to Christmas, helping Father Christmas on his rounds through Great Missenden, Prestwood and surrounding villages. Again, they were helped by a number of local charities each of which receives a proportion of the donations collected.

Club President, Carol Perry, said "We are always amazed at the generosity of everyone and how much people, young and old alike, look forward to Father Christmas and the sleigh's arrival."

Father Christmas also enjoyed outings to Ballinger Village Hall, for its craft fair, and Tesco in Amersham where a further £1,000 was raised for the Chiltern Food Bank.

The Club would like to thank all the charities and the wonderful volunteer drivers who towed the sleigh for their support. As the Club membership dwindles and ages, it becomes more vital that people volunteer to help if this much-loved Christmas tradition is to survive.



Santa on his rounds

Christmas Short Story competition

The Club is just finalising the results of the annual Christmas Short Story Competition for primary schools and will give the results in the next edition of *The Source*.

New venue and invitation

Sadly, after 40 years of weekly meetings at Missenden Abbey, new management advised that the club could no longer be accommodated. Undaunted, it has found a new home at The Cross Keys, where Alfie and his team have made the members feel very welcome. If you are interested in joining or just helping with one of the many fundraising events, the club meets on Mondays - 7.30pm on the first, third and fifth Mondays of the month and 12.30pm on other Mondays. Everyone welcome!

London Bridges Walk 2024



Becky and friends at the London Walk 2023

Rennie Grove Peace Hospice Care has announced the return of its annual London Bridges Walk. A family-friendly day that takes in some of the capital's most iconic bridges and landmarks. The two routes, one five miles and the other ten miles, give options for all abilities. Walkers are encouraged to bring relatives and friends, and their canine companions too.

On Sunday 24 March, the two routes begin at the Pear Tree Café in Battersea

Park. The five-mile route includes five famous London bridges, ending at Parliament Square. The ten-mile route takes in 12 bridges, ending with the most recognisable one of all - Tower Bridge.

All participants will be awarded a medal on completion, a keepsake from the day and a reminder of what they achieved.

The money raised will be used to fund vital care and support for people living with progressive life-limiting illnesses in Buckinghamshire and Hertfordshire.

Becky took part last year in memory of her mum, Dorene, who was cared for in the Peace Hospice Inpatient Unit at the end of her life. Becky said: "Mum was diagnosed with bladder cancer in September 2022 and, within a couple of months, we learned that her cancer was terminal. We then found out there was a bed available at the Peace Hospice. From that point on, Mum got her dignity back - she had a really peaceful, pain-free, dignified death and that's all that we could ask."

Prestwood Evening WI

Doors in Prestwood were adorned by the stunning Christmas decorations that WI members had made at their meeting in December. There was much talk and laughter, as everyone cut foliage and arranged it with baubles and ribbons to make their door wreaths

There is a full programme planned for 2024, starting in March with 'An Introduction to Yoga and Meditation'. In April Frances Carlaw's talk 'A Passion for Pearls' will cover the colours of pearls,

royalty, myths and legends.

The group meets in Prestwood Village Hall at 7.45pm on the second Tuesday of the month and welcomes visitors and new members. Please contact jenny.street44@gmail.com for more details.



Christmas wreaths made at Prestwood Evening WI



HOLY TRINITY, PRESTWOOD HOLY WEEK AND EASTER 2024

PALM SUNDAY March 24, 9.30am

We gather at the Church with palm crosses to begin our celebration of Jesus's Entry into Jerusalem at our Palm Sunday Eucharist.

Monday March 25, 7.30pm—From Darkness to Light

An online reflective sequence of readings, pictures and music for Holy Week.

Tuesday March 26, 6.30pm—Agape Meal

A simple shared meal with worship, recalling the meals Jesus shared with his disciples. Please sign up in church to come.

Wednesday March 27, 7.30pm—Stations of the Cross

This moving service recreates the drama of Holy Week as we walk in Jesus' footsteps.

MAUNDY THURSDAY March 28, 8.00pm—Sung Eucharist and Stripping of the Altars

In this moving service we commemorate the Last Supper, strip the altars and, for those who wish to stay, keep watch for the Vigil. The Vigil ends with Compline at Midnight.

GOOD FRIDAY March 29,

Walk of Witness then 10.30am—Churches Together Service, Prestwood Village Hall

Noon—The Seven Last Words of our Saviour on the Cross, Joseph Haydn

The *Hampden String Quartet* will perform this beautiful work by Joseph Haydn as the first hour of our God Friday devotions, at Hill House, Hampden House, Great Hampden, HP16 9RD.

2.00pm—The Good Friday Liturgy

We meet before the cross to commemorate Jesus' great sacrifice, using the words of the Reproaches and the Veneration of the Cross in the ancient liturgy of the Church.

EASTER EVE, SATURDAY March 30, 10.00am-Noon—Craft & Praise | Easter

Bring your family to join us for a fun morning of Easter crafts and activities in the Church. We will also be building the Easter Garden in the churchyard and will end with a short, informal worship time together. Suitable for all the family: tots to teens! If you can, please mail Frances, our Families Outreach Worker, on families@hprestwood.org.uk to book your place in advance.

7.00pm—First Mass of Easter

The Great Easter Celebration begins with the kindling of the Easter Fire, followed by the first mass of Easter. This service is followed by a Champagne Reception to celebrate Easter.

EASTER DAY, SUNDAY March 31, 9.30am—Family Festival Eucharist

Our Easter Day celebration for all the Family, including the Blessing of the Easter Garden and Easter egg hunt!



Local artisans featured at The Pantry at 51

The Pantry at 51 on Prestwood High Street has an exciting 2024 planned for the local community. Over the last few months, the business has gone from strength to strength having a very busy Christmas and New Year period. The introduction of more hot food options, including fab toasties and bacon rolls, have been a big hit with customers.

Over the first few weeks of February (on Weds, Thurs & Sundays) they collaborated with local artisans and traders, letting them use the outside space to feature their products and services. The stalls featured a diverse range of products, from handmade crafts to locally sourced goods. It was a wonderful opportunity for customers to discover the incredible local talent surrounding us. Check social media posts for information.

Louise (a Prestwood resident) is the new manager. She has worked at The Pantry since it re-opened and is really excited to keep improving it over the coming years.

Also on sale on the refill side of the business are fantastic eco products including some amazing value herbs and spices, nuts, oils, and lots of cleaning products, all of which can be refilled using your own bottles or ones which have been donated.

Please come along and soak up the warm and welcoming atmosphere in this dog friendly, cosy cafe.



York and Louise at Pantry at 51

No 69 Great Missenden High Street - Alphabet Soup



(left to right) Annie, Lucy, Sara and Sue

The much-loved Alphabet Soup on Great Missenden High Street will be closing its doors at the end of March. After 15 successful years and with mixed emotions Sue will be retiring and Sara is exploring pastures new.

No 69 won't be empty for long because, after five amazing years, Annie of Annie's Candles, 85B High Street, is hanging up her candle apron to join with her sister, Lucy, to open an exciting new retail venture at No 69.

The local sisters recognise they "have big shoes to fill", but aim to offer an eclectic range of homeware along with a welcoming shopping experience for their customers, opening, they hope by late spring. For those who have enjoyed Annie's candles over the years, you won't be disappointed! They are already working with some incredible candle brands to ensure Annie's loyal customers can still get their candle fix on the High Street.

Sue and Sara would like to say a huge thank you to their wonderful staff and to all the lovely customers who made Alphabet Soup such a success. They hope the village will welcome the change and continue to support local girls Annie and Lucy.

Great Missenden artisan market

Sunday 4 February started another year of Coopers Artisan Market on Great Missenden High Street. It's now become a regular fixture in the calendar bringing people into the village and putting Great Missenden on the map.

The market attracts people from many surrounding towns and villages to try the quality and range of foods on offer. There's freshly baked bread and pastries; fresh olives, cookies and brownies, a mushroom man, artisan cheeses and meats, Jamaican patties, Arancini, fresh coffee, burgers and much more. A feast for the eyes and the tastebuds! If you haven't been yet, come and check it out. The Market is held on the High Street on the first Sunday of every month.

The stall holders all say what a friendly and beautiful village it is. The village shops, many of which choose to open on Market day, welcome the extra footfall and the buzz the market brings to the village. Everyone, both locals and visitors, enjoy wandering down the pedestrianised High Street and soaking up the atmosphere.

Organiser Rob says, "We were so humbled to be invited

to host one of our artisan markets in delightful Great Missenden. It's such a magical place and the market traders have been made to feel so welcome. It's really lovely to hear all the lovely compliments about the market and products on offer. We especially love to see all the dogs that come to the market, especially as the markets are named after my own dog, Cooper"



Cooper's Market on Great Missenden High Street



ELLIOTT HOME IMPROVEMENTS
RENOVATION AND CONSTRUCTION

Building Renovations
And
Extensions

Kitchens & Bathrooms

Carpentry

01494 865906 or 07876 236535

References Available / Insured

www.elliottshomeimprovements.co.uk

E-Mail: info@elliottshomeimprovements.co.uk



**YOUR HANDYMAN
NO JOB TOO SMALL**

BRYAN TOMES

25 CHURCH STREET
GREAT MISSENDEN
BUCKS HP16 0AZ

01494 864 322
07887 968 791

Chiltern Opticians expands

Chiltern Opticians is very thankful for the support of the community in raising £649 for Guide Dogs at the Christmas Festival on Great Missenden High Street last November.

It was the 16th year hosting Santa in his grotto for the children to enjoy and raising money for Guide Dogs. Last year enough money was raised to sponsor a guide dog, called Chiltern, who is currently in training. Chiltern Opticians will continue to raise money for this very worthy cause.

Chiltern Opticians is also very proud to announce that a second branch has been opened in Tring at the beginning of February. Attached to the Tring branch, it will also be setting up a new charity aiming to support women and children with counselling facilities.

Somari says, "I always had a dream to have a second practice and I am so thankful that my dream has now come true. Please tell all your friends in the Tring and Aston Clinton area, we would love to see them and take care of their eyes".



Somari and Chiltern Opticians supporting Guide Dogs



Kingshill Cars

01494 868699

bookings@kingshillcars.co.uk

www.kingshillcars.co.uk

Saloon cars & MPVs in & around the Chilterns,
London and London Airports

More about the Chilterns @
www.theheartofthechilterns.co.uk

Afternoon Tea

in aid of

Saturday 2 March at 3pm
Oldham Hall, 71 The Square, Great Missenden
Tickets £10 which includes tea and cake



There will also be a raffle, gift and other stalls,
plus musical entertainment

Tickets for the Afternoon Tea are available at Samways/The Post Office in Great Missenden. If you would like to make a donation or to buy Raffles Tickets, please contact:

Jill York: 07846 534301 jillelizabethyork@yahoo.co.uk



Great Missenden Village Association (GMVA) litter pick

Saturday 23 March,
10.30am - 12 noon.

Meet near the Library

There is an opportunity to join in with the community to tidy up the village. Equipment and resources will be available - but please bring gloves. Everyone is welcome.

Chiltern Crematorium Mothers' Day event

The Chiltern Crematorium is providing a space for people to commemorate this Mothers' Day, Sunday 10 March. The Hampden Chapel will be open from 10am -1pm with reflective music playing gently to allow you a private space for

commemoration. Bereavement volunteers will be on hand for a chat and signposting should they be needed.

Memorial information and refreshments will be available. There will be seeded paper available for you to write a letter to your loved one which the staff can plant in the wildflower meadow, or you can take home to plant in your garden.

This is a free event open to anyone who may wish to come, with no need to have attended the crematorium before. If you would like more information or have any questions please reach out to the office staff who will be happy to help.



Great Missenden library Opening hours

Tuesday, Wednesday and Friday 9am-5pm; Saturday 10am-1pm;
Sunday, Monday, Thursday and Public holidays-closed.

Activities

Tuesday.

Learn My Way. 11am. 1-2-1 Basic computer skills tuition with Library volunteer.
(Book at the library)

Bucks Book Groups with Calibre Audio 10.30am-12.00 Last Tues of each month
Audiobooks for those who find reading print difficult due to visual impairment, dyslexia ADD/ADHD, Autism and other physical and neurological conditions.

Wednesday.

Scrabble. 10am-12 noon.

Book Club (2nd Wed in month). 2.30-3.30pm.

Compassionate Café (Last Wed in month) 10-11.30am

For anyone who has been affected by any type of loss or bereavement (in partnership with Rennie Grove Peace)

Friday.

Bounce & Rhyme for pre-schoolers (term-time only) 10am.

Scrabble from 1.30pm

Contact: 01296 382415 lib-mis@buckinghamshire.gov.uk

Scan the QR code or visit: www.tinyurl.com/mvpzehba or
www.buckscc.gov.uk/services/libraries/find-a-library/great-missenden/



HP16 Easter Church events 2024

Abbreviations as on p13 plus the following:

St J LM - St John the Baptist Little Missenden
IHM, GM - Immaculate Heart of Mary GM
KB - Kingshill Baptist
PMC - Prestwood Methodist



Sunday 24 March

Palm Sunday services

- Holy Trinity Prestwood 9.30am
- Kingshill Baptist 10am
- St Peter & Paul, GM 10am and 6pm
- King's Church PVH 10.30am
- St John the Baptist LM Palm Sunday Liturgy of the Palms & The Passion 10.30am
- Prestwood Methodist 11am
- Immaculate Heart of Mary GM 11am Mass
- Great Missenden Baptist 3.30pm

Monday 25 March

- The Stations of the Cross. St P&P, GM 7.30pm
- From Darkness to Light HTC online only. Reflective sequence of readings, pictures and music. 7.30pm
- St J LM Compline 8pm

Tuesday 26 March

- A simple meal with worship 6.30pm HTC (please sign up in church)
- Said Compline with hymns St Mary's, Ballinger 7.30pm
- St J LM Compline 8pm

Wednesday 27 March

- Words, Music and Art St P&P, GM 7.30pm
- Stations of the Cross HTC 7.30pm
- The Art of the Stations of the Cross - each depicted by a different historical artist. KB 7.30pm
- St J LM Compline 8pm

Thursday 28 March

- GMBC Meal at 6pm. Communion served (optional). Contact Nicki 07395 032432 or email gmbc.secr@gmail.com
- St J LM Eucharist 7pm
- Mass of the Lord's Supper, IHM, GM 7pm
- Holy Communion with washing of the feet and stripping of the altars, St P&P, GM 7.30pm
- Sung Eucharist and Stripping of the Altars 8pm HTC followed by the Vigil ending with Compline at Midnight
- The Watch, peaceful reflection, St P&P, GM 9pm

Friday 29 March

Good Friday Walk of Witness - Churches Walking Together

A Good Friday walk from St Peter & St Paul 9am (setting off 9.15am); also from Holy Trinity at 9.30am. The two groups converge at The Green Man approx 10am. Then on to an open air service 10.30am at Prestwood Village Hall (inside the Hall if the weather dictates)

Good Friday services

- Haydn's The Seven Last Words of our Saviour on the Cross performed by The Hampden String Quartet at Hill House, Hampden House, HP16 9RD 12 noon
- Good Friday Meditation St J, LM at the Cross 2pm
- The Good Friday Liturgy HTC 2pm
- The Good Friday Liturgy St P&P, GM 2pm
- Celebration of the Lord's Passion IHM, GM 3pm

Saturday 30 March

- Craft & Praise HTC for all the family. Details and to book: email families@htprestwood.org.uk 10am - noon
- First Mass of Easter HTC 7pm. Service is followed by a Champagne Reception.

Sunday 31 March

Easter Day Services

Jesus is risen



- St Peter & Paul, GM Sunrise Service 6am on Buryfield
- St John the Baptist LM Holy Communion 8am Sung Eucharist 10.30am followed by Easter Fire and Egg Hunt
- Holy Trinity Prestwood 9.30am including the Blessing of the Easter Garden and Easter egg hunt
- Great Missenden Baptist 10am
- Kingshill Baptist Easter Praise 10am and 11am Easter egg hunt in church grounds
- St Peter & Paul, GM 10am and 6pm
- King's Church PVH 10.30am
- Prestwood Methodist 11am
- Immaculate Heart of Mary GM 11am Mass

MY YEAR WALKS

Bring the family for a walk with a difference!

Walk into the woods & discover Roald Dahl's last book, *My Year*. On the fourth Sunday of the month during 2024.
Optional hot drink and scone package available

Roald Dahl Museum, Great Missenden | roalddahlmuseum.org

Events at The Roald Dahl Museum and Story Centre

The Museum and Shop are open 10am to 4.30pm, Thursday to Sunday.

Visitors 5 years old and over £7.95. Tickets include re-entry for a whole year!

More information about activities, including times and charges, contact: 01494 892192 website: www.roalddahl.com/museum email: hello@roalddahlmuseum.org

Fri 29 March to Sun 14 April (closed Mon 8 April)

A Danny and Fox Easter

Celebrating the great outdoors this Easter with storytelling, crafts and walks inspired by Danny the Champion of the World and Fantastic Mr Fox. Join in with clay and junk modelling workshops through the holidays.

Storytelling and trails free with Museum admission, workshops £4 per person extra

Events take place at the Roald Dahl Museum and Story Centre.

81-83 High Street, Great Missenden, Bucks, HP16 0AL

Registered charity number 1085853 A company limited by guarantee number 4178505



HP16 events

The Source

March - April 2024

Abbreviations		
GM	- Great Missenden	St P&P, GM - St Peter & St Paul Church, GM
PN	- Prestwood Nature	HTC - Holy Trinity Church, Prestwood
PVH	- Prestwood Village Hall	GMBC - Great Missenden Baptist Church

Friday 1 March
Tea and Games. GMBC. 2-4pm. Board or card games, light refreshment. Free, donations welcome. Details: Barbara 01494 862774

National Garden Scheme Garden open for the Snowdrop Festival for groups (10-25) by appointment. Touchwood, Grimms Hill, Great Missenden HP16 9BG. 6 Feb to 5 March. Contact teabreakgardener@gmail.com 07801 948650

Saturday 2 March
Breakfast with Talk by Ashley Mitchell, senior chaplain at RAF Halton. GMBC. 8.30am. £5 for cooked or continental breakfast. Booking essential. Details: Andrew 07871 506797

Men's Breakfast. HTC Hall, Prestwood. 8.30–10am. Full English Breakfast, often with a visiting speaker. All gents are welcome. Book: secretary@htprestwood.org.uk

Creating Hedges and Habitat Connections along the Misbourne Greenway 10am Meet at The Firecrest, London Rd, Wendover (see p7)

Stitch-in-time Sewing/Crafters Group. 9.30am–12 noon. GMBC. Informal and social. (term time). No cost. Contact Karen 07582 856439. stitchintimeGM19@gmail.com

Sunday 3 March
Artisan Market, High Street, GM. 10am-3pm. Food, drink stalls, local craft producers. Supporting The Missenden Walled Garden

Dendro Day meet from 10.30am at Little Friars Arboretum near Chesham HP15 2SS Details: buckstreeclub@gmail.com (see p4)

Lent Talk St P&P, GM 4.30pm ‘Travelling along the Anglican Way’ followed by service at 6pm

Monday 4 March
Countrymen's Club for Retirees, Countryways, Road Farm, GM. 1.30-3pm. Meet, chat, participate in gentle farm-related tasks. Refreshments, donation. Book: 01494 862413, email: office.rfcountryways@gmail.com, www.roadfarmcountryways.com/countrymen

Tuesday 5 March
Creating Hedges and Habitat Connections along the Misbourne Greenway 10am Meet at The Firecrest (see p7)

Prestwood Forget Me Not Club for the over 60s. Sociable afternoon tea with entertainment. PVH. Open 2pm, start 2.15pm. £3. Call: Wendy 07961 164723; Chris 07771 798646

Wednesday 6 March
Prestwood Afternoon WI. Talk: African Mammals with David Dennis PVH. 2pm. Tea and biscuits. Details: Jenny 07729 811848.

Thursday 7 March
The Lee Village Walk. 9.30am. Meet on The Green.

Polytunnel growing free workshop (13-18 year olds) 5-6.30pm at Countryways, Road Farm, GM Booking essential at www.roadfarmcountryways.com/inspired2grow-dates/

Friday 8 March
PN free online talk Mending the Misbourne: reviving a Chiltern chalk stream 7.30pm www.eventbrite.co.uk/e/828292433967?aff=oddttdt-creator



Saturday 9 March
Rugby Six Nations GMBC. 2.15pm and 4.45pm Big screen TV coverage of matches. Church open 30 mins prior to kick off. Refreshments. greatmissendenbaptistchurch.com

“Beauty & Love” by The Firth Singers featuring Tyler’s Green Middle School Choir 7pm, St Mary’s Chesham. £15/£5, children free. Email thefirthsingerg@gmail.com

Sunday 10 March
PN. Volunteer Work Party at Boug’s wildflower meadow GM 10am-1pm. No experience, tools or booking required. For more info see prestwoodnature.org/wp/

Rugby Six Nations GMBC. 3pm (see Sat 9 March)

Fusion Youth Group. HTC Hall and Annexe, Prestwood. 4-5.30pm. 11-14 years old, table tennis, snacks, activities, chat. Details: kayleigh@htprestwood.org.uk

Lent Talk St P&P, GM 4.30pm ‘Travelling along the Anglican Way’ followed by evening service 6pm

Monday 11 March
Film Night. GMBC. 7.30pm. Film tbc. Free, donations in aid of Christian Aid welcome. Details: greatmissendenbaptistchurch.com

Tuesday 12 March
Fat Quarters Quilting Group, Memorial Centre, GM. 7-10pm Tor-toiseshell Block with Mary Hawkins, a practical session. Visitors £5.50 inc refreshments. New members welcome Details: Gill 07751 196078 fatquartersmissenden@gmail.com

Prestwood Evening WI An Introduction to Yoga and Meditation, Catherine Campbell PVH. 7.45pm. Details: jenny.street44@gmail.com

Wednesday 13 March
SEND Support Group. HTC Annexe, Prestwood. 12.30-2pm. A safe and confidential environment for SEND parents to share experiences and build friendships

Thursday 14 March
Little Kingshill Friendship Group. LK Village Hall. 2pm. Social afternoon. speaker ‘Royal Westminster’ followed by tea and cake. Small charge. Details: Christine 01494 868552

Prestwood Gardening Society. The Legacy of Geoff Hamilton with Terry Cann. PVH 8pm. Non-members £2 Contact: 01494 865542 or sheri.preston@googlemail.com

Friday 15 March
Tea and Games. GMBC. 2-4pm. (See Fri 1 March)

Great Missenden WI 2.30pm GM Memorial Centre. Packing for a Holiday. Speaker Niki Hall. Contact: 01494 863080 laurelj@btconnect.com

Saturday 16 March
Prestwood Repair Café. 10am-1.30pm. PCC. Bring items for repair and enjoy refreshments

PN. Volunteer Work Party at the Pollinator Friendly Garden at Greenlands Lane, Prestwood. 10am -12.30pm No experience, tools or booking required. Details: prestwoodnature.org/wp/

Rugby Six Nations GMBC. 2.15pm, 4.45pm, 8pm (see Sat 9 March)

Sunday 17 March
Lent Talk St P&P, GM 4.30pm ‘Travelling along the Anglican Way’ followed by a 6pm service

Monday 18 March
Prestwood Wine Club. PVH 8pm. Tickets £15 for members, £20 for non-members must be bought in advance from carole@vinovation.co.uk

Tuesday 19 March
BBOWT Talk: The Rhythm of Nature in words and music with The Wick Trimmers. GM Memorial Centre. 7.45pm. Cost: £7.50 inc. refreshments. Doors open 7.15pm. Booking essential bbowt.org.uk/events (See p4)

Wednesday 20 March
Prestwood Friendship Club. Liz Sheppard: Refugee work in High Wycombe 2–3.15pm. PMC Tea and biscuits. No charge. All welcome. Details Mary Spooner 01494 862431.

Chequers Folk at The Barn @ Cherry Tree Farm, Great Kingshill HP15 6ED. 8-10pm. With singer songwriter Jake Morley. Tickets £10 on door. Details: philippa.wallin@btinternet.com

Sunday 24 March
PN Woodland walk in Angling Spring Wood with John Morris. 10.30am - 12.30pm Reserve a space see prestwoodnature.org/wp/

My Year Walks - a walk into the woods at 11.30am & 2pm: Michael Parkhouse inspired by Roald Dahl’s last book, My Year £4 plusMuseum Entry roalddahlmuseum.org/see-whats-on

Thursday 28 March
The Arts Society Ballinger. The Dowager Empress Cixi: Ruling from behind the Yellow Silk Screen by David Rosier. Ballinger Village Hall. 7.30pm for 8pm. Members £8 Non-Members £10. Contact: ballinger@theartsociety.org

Tuesday 2 April
Prestwood Forget Me Not Club for the over 60s. (See Tues 5 March)

Wednesday 3 April
Prestwood Afternoon WI. Talk: ‘Life on a mercy ship: an update’ with Ruth Waine PVH. 2pm. Tea and biscuits. Visitors welcome. Details: Jenny 07729 811848.

Thursday 4 April
The Lee Village Walk. 9.30am. Meet on The Green.

Friday 5 April
Tea and Games. GMBC. 2-4pm. (See Fri 1 March)

Saturday 6 April
Men's Breakfast. HTC Hall, Prestwood. 8.30–10am. (See Sat 2 March)

Stitch-in-time Sewing/Crafters Group. GMBC (See Sat 2 March)

Sunday 7 April
Artisan Market, High Street, GM. 10am-3pm (See Sun 3 March)

Fat Quarters Quilting Group, Memorial Centre, GM. 7–10pm Traditional Made Modern with Speaker, Sheena Roberts. (see Tues 12 March)

Prestwood Evening WI A Passion for Pearls, Frances Carlaw PVH. 7.45pm. Details: jenny.street44@gmail.com

Thursday 11 April
Little Kingshill Friendship Group. LK Village Hall. 2pm (See Thurs 14 March)

Polytunnel growing free workshop (13-18 year olds) 5-6.30pm at Countryways GM (See Thurs 7 March)

(Thurs 11 April contd)
Prestwood Gardening Society. The Art of Low Maintenance Gardening with Dr Sandy Primrose PVH 8pm. (See Thurs 14 March)

Sunday 14 April
PN. Volunteer Work Party at Boug’s wildflower meadow GM 10am-1pm. (See 10 March)

Fusion Youth Group. HTC Hall and Annexe, Prestwood. 4-5.30pm. (See Sun 10 March)

Monday 15 April
Countrymen's Club for Retirees, Countryways, Road Farm, GM. 1.30-3pm. (See Mon 4 March)

Prestwood Wine Club. PVH 8pm (See Mon 18 March)

Wednesday 17 April
SEND Support Group. HT Annexe, Prestwood. 12.30-2pm. (See Wed 13 March)

Prestwood Friendship Club. Musical afternoon with The Chiltern Singers. 2–3.15pm. (See Wed 20 March)

Chequers Folk at The Barn. Cherry Tree Farm, Great Kingshill HP15 6ED. 8-10pm. With acapella group Jack in a Barrell. Tickets on the door £10. (See Wed 20 March)

Thursday 18 April
Great Missenden WI 2.30pm GM Memorial Centre. Mindfulness, meditation, relaxation. Speaker Nella Gilbert. (See Fri 15 March)

Free cookery workshop (13-18 years old) 5-6.30pm at Countryways, Road Farm, GM Booking essential at www.roadfarmcountryways.com/inspired2grow-dates/

Friday 19 April
Tea and Games. GMBC. 2-4pm. (See Fri 1 March)

Saturday 20 April
PN. Volunteer Work Party 10am -12.30pm at the Pollinator Friendly Garden at Greenlands Lane, Prestwood (See 16 March)

Prestwood Repair Café. 10am-1.30pm. Bring items for repair and enjoy refreshments. PCC

Prestwood Forget Me Not Club Cream Tea and Spring Sale at PVH 2-4pm. Stalls, raffle and cream tea £3 Call: Wendy 07961 164723; Chris 07771 798646

Talk with Afternoon Tea. “John Hampden, the Patriot” St P&P, GM. **2.30pm** Tickets at Samways or at the door: £10. (Vivienne Davis 01494 891312)

Sunday 21 April
PN Spring Wildflower Walk with a local botanist starting at Boug’s Meadow GM, 2-4pm, Suitable for all walkers and families. To book: prestwoodnature.org/wp/

Thursday 25 April
The Arts Society Ballinger. Talk: Hogarth at the Hustings by Rupert Dickens. Ballinger Village Hall. 7.30pm for 8pm. (See Thurs 28 Mar)

Saturday 27 April
GM Choral Society. 75th Anniversary Concert. St P&P, GM 7.30pm. Tickets £17.50, £10 students. Wye Country, GM, www.gmcsonline.co.uk. Contact: helloGMCS@gmail.com (See p)

Sunday 28 April
My Year Walks - a walk into the woods led by Michael Parkhouse 11.30am & 2pm (See Sun 24 March)

Lunch. 12 noon. Followed by a half hour service 1.30pm. Hosted by The King’s Church Prestwood. PVH. All welcome. Contact: Philippa Wallin 01494 866439.

Monday 29 April
Countrymen's Club for Retirees, Countryways, Road Farm, GM. 1.30-3pm. (See Mon 4 March)

WEEKLY & FORTNIGHTLY Mondays

Bumps & Babies. The Annexe, HTC, Prestwood. (term time) 9.30-11.30am. welcoming group for babies up to 1yr plus carers. Detail: families@htprestwood.org.uk

Toddlers at GMBC Hall. 10am. Details: Dawn 07895 023376,

Monday Meals. GMBC. 3.30pm. Meal at 5pm. Free. Open to everyone. Booking essential: Val 01494 864834, Nicki 07395 032432.

Prayer Space. GMBC. Weekly 4–6pm for private prayer and quiet reflection. Please feel welcome to come along and use this sanctuary.

Tuesdays
Simply Walk. A gentle 30–45 minute morning walk. Meet at GM Memorial Hall. 10am. Free. Contact: 01494 475367 bookwhen.com/simplywalk

Age UK Coffee Morning. Memorial Hall, GM. 9.45am-12 noon. All welcome, especially anyone new to GM. Details: Jen King 01494 865271

The Wool Gatherers. The Annexe, HTC, Prestwood. 10am-12 noon. Bring own knitting, crochet, craft, or join charity project. No charge. All welcome. Donations for refreshment. secretary@htprestwood.org.uk

Prestwood and Great Kingshill Age Concern Luncheon Club. PVH. 1pm (Not 1st Tuesday of the month). £5 Details: Joan Palmer 01494 863982, Jenny Plews 01494 713960

Social Bridge. 2nd and 4th Tuesday of each month, PVH. No partner necessary. 2–4pm. £3. Details: Stella Watts-Moore 01494 863201

The Firth Singers meet every 2 or 3 weeks. Tuesday evenings in GM. Informal auditions contact: thefirthsingerg@gmail.com, 07773 704233

Wednesdays
What does the Bible say to us today? GMBC. Weekly (term time). 10.30-12 noon. All welcome. Details: Ernie 01494 864008

Coffee and Share. St P&P, GM. (term time) 10.30am

Badminton Group. GMBC Hall. Weekly 10.45-11.45am. Fun badminton for ladies of a certain age. Details: Jackie 01494 766635

Great Missenden Bridge Club. GM Memorial Centre. 7.15pm. Details: Val Daniel 07778 119094 or valdaniel1105@gmail.com

All Voices Aloud Singing Group. GMBC. (term time) No audition needed 7.30pm. Details: Helen 01494 715336, 07773 581754 avachoir21@gmail.com

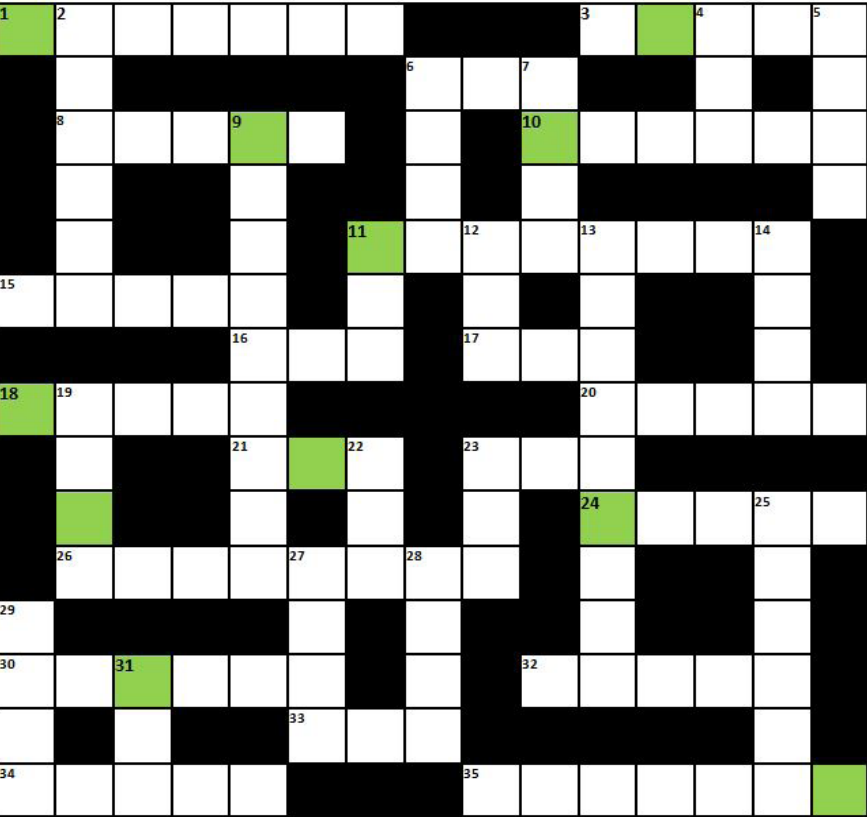
Thursdays
Toddlers. HTC, Prestwood. (term time) 10-11.30am. Drop-in group for 0-5s with carers. Toys, crafts, snack time, story time, singing and Toddler prayer. Refreshments. Details: kayleigh@htprestwood.org.uk

Toy Library. The Annexe, HTC, Prestwood. (term time) 10.30am-12 noon. Educational and stimulating toys and playsets to borrow free. Details: families@htprestwood.org.uk

GM Age Concern Lunch Club. GMBC. Over 60s welcome. 11am-2pm. Transport can be provided. Details Julie Needle 01296 612843

Fridays
Table tennis. GMBC Hall. 2-4pm. (closed 28 July-1 Sept) All ages welcome. Details: Ernie 01494 864008, Nicki 07395 032432

SOURCE CROSSWORD NO. 82



Crossword 82 challenge
A message to you all from the team at *The Source* is found in the green squares

please enter your name here: _____ and send entries to:
HP16 - THE SOURCE, 6 CHEQUERS LANE, PRESTWOOD. HP16 9DW

Crossword solution
No. 81
The clues pointed to the famous carol,

ONCE IN ROYAL
DAVID'S CITY

Congratulations to David Hillas who not only completed the crossword successfully, but also identified the Christmas carol.



Last time we asked: Where & what is this in HP16?



The Nags Head on London Road
This beautiful Christmas tree stands majestically next to the London Road. The picture includes the lovely planters in front of the wonderful Nags Head

hotel, restaurant and public house. The name implies that it may originally have been a coaching inn, and if that is the case it isn't surprising that the Number 41 bus stop is there now!
The old A413, before the by-pass was built, was the main coaching route from London to Wendover. No doubt the opening of the Metropolitan Line through Great Missenden and on to Verney Junction would have greatly affected the coaching inns, and as a result they have become the wonderful venues they are today. The tree, of course,

is in the grounds of Misenden Abbey and next to our famous and rare chalk river - The Misbourne (see p7 the Chalk Festival river dipping on April 3 and



p6 HS2). And speaking of the Misbourne, it is now flowing all the way from The Black Horse. Here is lovely evidence of that fact - with thanks to Anne from *The Source* for the photographs.



The River Misbourne flowing again

So where and what is this in HP16?



Please send answers to editor@hp16.org.uk
The best (creative, or factual) will be in Issue 83

Across

- 1) I don't want to disappoint (7)
- 3) I see from this that it was hot in the Post Office (5)
- 6) Stupid donkey! (3)
- 8) In danger of losing my temper! (5)
- 10) Two referees bump into each other after going to the toilet. (6)
- 11) Could I use 3 across - I do look grumpy (8)
- 15) Brazilian city in the advertising strategy (5)
- 16) Speaker realises the mistake and hesitates (3)
- 17) 13 down seems to have stopped moving! (3)
- 18) The data looks the same whichever way you look at it (5)
- 20) There's one in my wallet - it's legal tender (5)
- 21) Bering North West.... Turn around in the Passage and add the missing a. (3)
- 23) How mixed up are you about the agency monitoring pandemics? (3)
- 24) Discipline keeps you on track (5)
- 26) Given to Barbie's South African husband, but he's given it up. (8)
- 30) Coca Cola is not good for one's identity in God - says dentist! (6)
- 32) The noise of overnight mining in Cornwall is a source of annoyance (5)
- 33) It's a long time to clean the crap from an ancient underground prison. (3)
- 34) Sounds like you're certain this goes with 21 across? (5)
- 35) Have you heard about Planet Y? - lawbreakers should get this. (7)

Down

- 2) Yep! Real mixed up actor (6)
- 4) The gloves are... the milk is... So I'm leaving too! (3)
- 5) The monster was seen there reversing, ergo he's the prime suspect. (4)
- 6) Around here we could have a car each (4)
- 7) Wellbeing retreat for Personal assistants in the Gestapo (4)
- 9) It seems reps mix up these rulers, selling them non existent dresses (9)
- 11) Vicar was equally good without his son. (3)
- 12) Just a little insipid (3)
- 13) Magical liquid with permanent memory stored in it - gets you to the top (9)
- 14) The planet needs more of these in our streets (4)
- 19) I bet he's an accountant... and sure to be a grass! (4)
- 22) Gently interrogate (3)
- 23) Sounds like one who didn't lose. (3)
- 25) She really meant to stay under canvas (6)
- 27) We can take the saints out of the traditional Nativity (4)
- 28) Common to 7,11 and 17 (4)
- 29) Just step backwards. (4)
- 31) Part of a gown from way back in history (3)

Who was she?

A very famous lady who has massively influenced history, yet her later life is rarely mentioned. Recently *The Source* editor was encouraged to

write a song about her. Thinking this must have been done before led to the recognition that all the songs were of her earlier years... but who was she? And what is her relevance to us in HP16, and even within this edition of *The Source*?

*'Twas the plight of poor women that inspired her to action,
As in all of her life, she was full of compassion;
Through wars and through plagues only seeking to care,
Her lamp shedding light on the lack of welfare.*

*With young Doctor De'ath as her medical partner
Training nurses to work with the Bucks Cottage Mothers.
The aim for each home: better hygiene and health
Each household more able to care for itself.*

*(Refrain)
Lighting the way, fighting the system,
A champion for health with decades of wisdom
The song that this _____ sang,
The song that this _____ sang.*

*From her bed on the Claydon estate in Buck's county,
Her silent work shone through the late nineteenth cent'ry.
Despite her poor health she would write and conspire
To show what the health of the nations required.*

*From the Crimean war where she'd cared for the wounded,
To the homes of the poor, the oppressed, isolated.
Through doors and taboos to bring counsel and hope
To those who felt trapped and unable to cope.*

*The first woman awarded British Order of Merit,
A legend, a hero, whose work we inherit.
Health Visiting, Nursing, the roles they fulfil
Are signs that the _____'s song echoes still.*

The Source Youth

What's Your Argument?

At Prestwood Junior School this term, we have been looking at persuasive texts, discussion texts and balanced arguments.

In Year 6, after looking at a model text based on a balanced argument about whether homework should be banned, pupils innovated their writing. The new subject of their argument was - Should animals be kept in zoos?

Should Animals be Kept in Zoos?

by Molly (pictured right)

Those of you with an interest in animals have probably visited a zoo. Since 3500 years BC, in Ancient Egypt, when the first zoo opened, we have marvelled and wondered at species we would not normally be able to watch. Seeing these animals in such a situation has aroused many debates over whether this should happen or not, with powerful arguments on both sides.

One of the main reasons that many people support zoos is that endangered animals can be protected from the harsh elements and hungry predators. In fact, animal welfare groups agree that recent research shows that 97.5% of species in zoos receive crucial treatment for wounds and diseases. Furthermore, children, who will soon carry the responsibility of caring for our planet, usually welcome the opportunity to learn about such a wide variety of species without having to travel abroad.

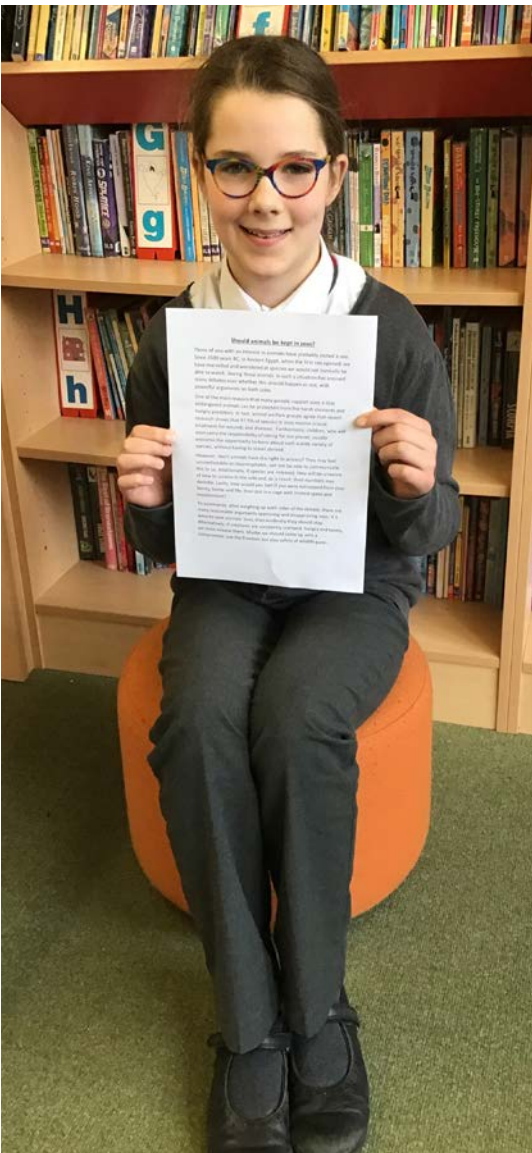
However, don't animals have the right to privacy? They may feel uncomfortable or claustrophobic, yet not be able to communicate this to us. Additionally, if species are released, they will be unaware of

how to survive in the wild and, as a result, their numbers may dwindle. Lastly, how would you feel if you were kidnapped from your family, home and life, then put in a cage with limited space and nourishment?

To summarise, after weighing up both sides of the debate, there are many reasonable arguments approving and disapproving zoos. If it were to save animals' lives, then evidently they should stay. Alternatively, if creatures are constantly cramped, hungry and lonely, we must release them. Maybe we should come up with a compromise: use the freedom but also safety of wild-life parks.

I wonder what you think about their arguments. Do you think brownies make good pets? Do you think animals should be kept in zoos?

What I think we can all agree on, is that Molly (aged 11) and Noor (aged 9) have written two very good balanced arguments!



The Big Garden Birdwatch

The Big Garden Birdwatch is nearly over for another year. Mrs Karen Scott and the Rainbows made special pine cone treats smothered in peanut butter and bird seed. These disappeared very quickly and we wondered which birds were eating them all. We had Blue Tits, Great Tits, Long Tailed Tits (my favourite) - Greenfinch, Chaffinch, Goldfinch, Dunnock, Robins and a Wren (no photo sorry, too small and quick!) - Starling, Blackbird and Thrush - Collared Dove, Jackdaw, Woodpigeons galore and a Crow. Had to be something bigger...an Ostrich maybe?

Aha caught it in the act the Grey Squirrellfinch!!!

Did you take part in the Big Garden Birdwatch? Let us know which birds you saw and send us your photos! Bob and Karen Scott counted 19 different species of bird in their garden on Honor End Lane. Top were Woodpigeons at 6, then Greenfinch and Robins in equal 2nd place on 5. Do you see any other wildlife in your garden? Send us your wildlife spots!



Inspired to Grow

Countryways at Road Farm is a project aimed at supporting youngsters in families from the local area who are facing challenging times for one reason or another; whether it's mental health struggles, financial hardship, or loneliness. "We want to get young people positively inspired in growing, cooking, sharing and learning about food and at the same time raising awareness of food waste and the environment, the importance of diversity in our diets while having fun engaging with nature, outdoors. All that will, we hope, be good for our own health and our planet's," says Project Manager Emily Reddy. "Based at Road Farm, our unique setting provides the perfect environment to demonstrate food production with on-farm examples of food and livestock production

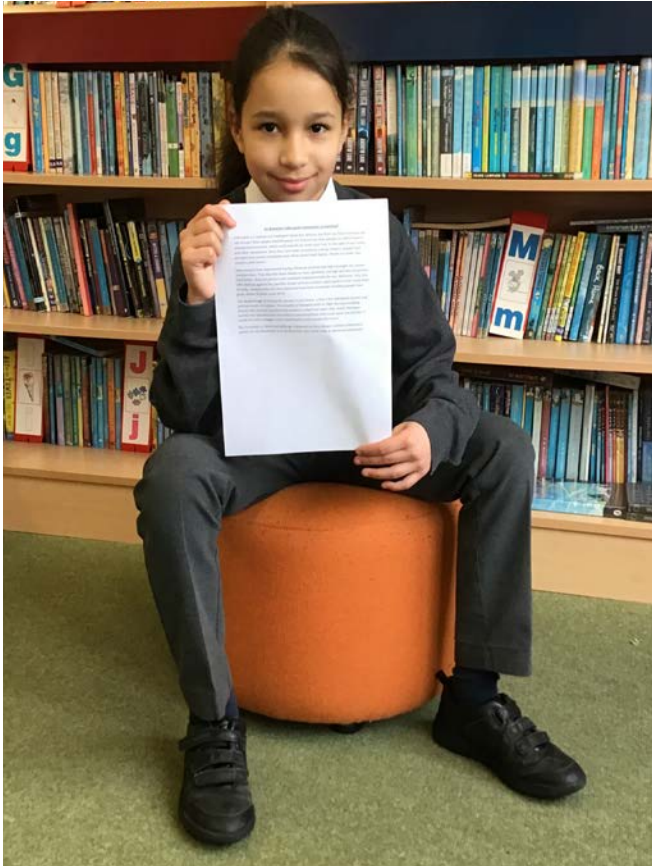


as well as hands-on vegetable growing through the Inspired to Grow project."

Workshops and sessions are free of charge and usually run on the last Thursday of the month. The next session is 7th March, 5pm-6.30pm where participants can learn how to grow their own potatoes, beetroot and cucumber. You can book online: www.roadfarmcountryways.com/inspiredtogrow/ or to make a referral or to find out more contact Emily by emailing: office.rfcountrways@gmail.com

The Source Youth

What's Your Argument?



At Prestwood Junior School this term we have been looking at persuasive texts, discussion texts and balanced arguments.

In Year 4, after reading *The Spiderwick Chronicles* (by Tony DiTerlizzi and Holly Black), the pupils have been writing balanced arguments about whether a faerie or a brownie would make a good pet!

Article by
Noor (pictured left)

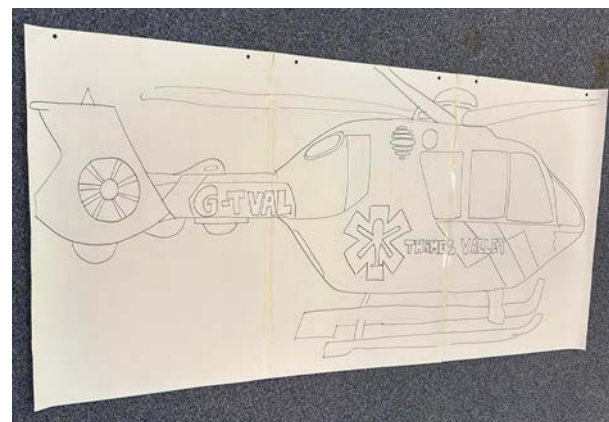
Do Brownies make good companions to Mankind?

A Brownie is a mature and intelligent faerie that defends you from malicious and vile threats. Most people think Brownies are fictional but they actually are found in unusual environments, which could actually be under your roof, in the walls of your home and other sanctuaries. Since they have been recorded as a living creature, people have gossiped and caused commotion over these pencil-sized faeries. Would you share your property with them?

Many people have experienced having a Brownie at home and said it brought the owners mystical vibes. They describe these faeries as loyal, optimistic and high spirited companions. Even better, they can perform and complete unpleasant tasks for you. Moreover, they also offer defense against foe, possible danger and are practical advice-givers in their spare time! Actually, reviews state and show Brownies have been so popular, countless people have given shelter to them since 2013!

The disadvantage of having this species in your home, is that a few individuals haven't had positive results or reviews. The majority of Brownies work at night causing unsettling dreams and stressful sounds to the dreamer in their bed under their duvet. Moreover, parents feel apprehensive since they're concerned their child could upset one and then it would turn into a Boggart and it could destroy and ransack the house!

Print is not dead! Thousands of people read newspapers (including this one!) so it's still well worth getting your words in print. If you are a young person in the HP16 postcode area, send us your stories, photos, cartoons, sports results, theatre performances, music gigs, illustrations, poems... You name it, we want to see it!
Email hp16thesource@yahoo.co.uk



Flying High

Working towards this terms badge; the Thames Valley Air Ambulance Challenge badge, the 4th Prestwood Brownies brought in loose change from home with the aim of covering the outline of a Thames Valley Air Ambulance (TVAA) helicopter. Working together, the unit covered almost the whole helicopter and donated all the money to the charity. In total the Brownies raised a fantastic £131.24. Ruth, from Thames Valley Air Ambulance, led the girls through a scenario and how the air ambulance would be involved, before sharing some goodies for everyone to take home.



Thames Valley Air Ambulance serves a community of more than 2 million people. They are operational 365 days a year and have dealt with 3293 incidents around Bucks, Berks and Oxfordshire in 2023. TVAA is a charity, so if you'd also like to help give everyone within the TVAA area the best chance of surviving and recovering from an emergency, head over to their website and find out about the different ways you can help to support them: www.tvairambulance.org.uk

If you'd like to find out more about joining or supporting the Brownies go to www.girlguiding.org.uk