

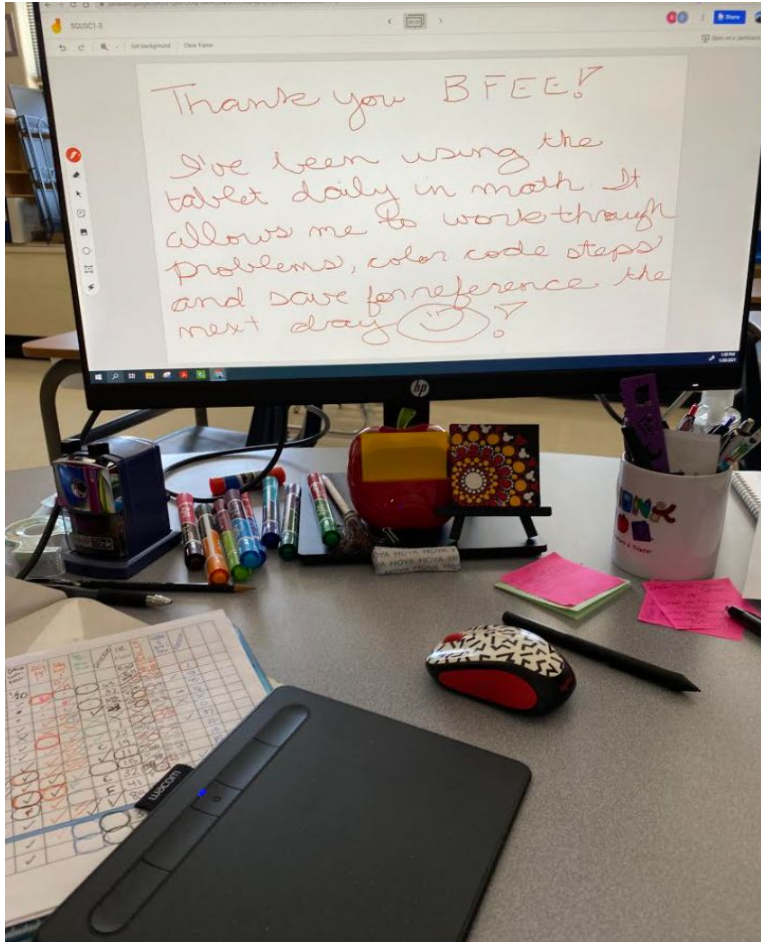
Dear Batavia Foundation for Educational Excellence Members,

Thank you so much for your generous support of Batavia students and staff. This year we purchased tools that have really had a positive impact in our Batavia Virtual Academy classrooms. We are excited to share several pictures with you.

Thank you so much for your dedication to BPS students and staff.

Sincerely,  
Jennifer Hix  
Principal of BVA





Thank you BFEE!! I've been using the tablet daily in math. It allows me to work through problems, color code steps and save for reference the next day :) !



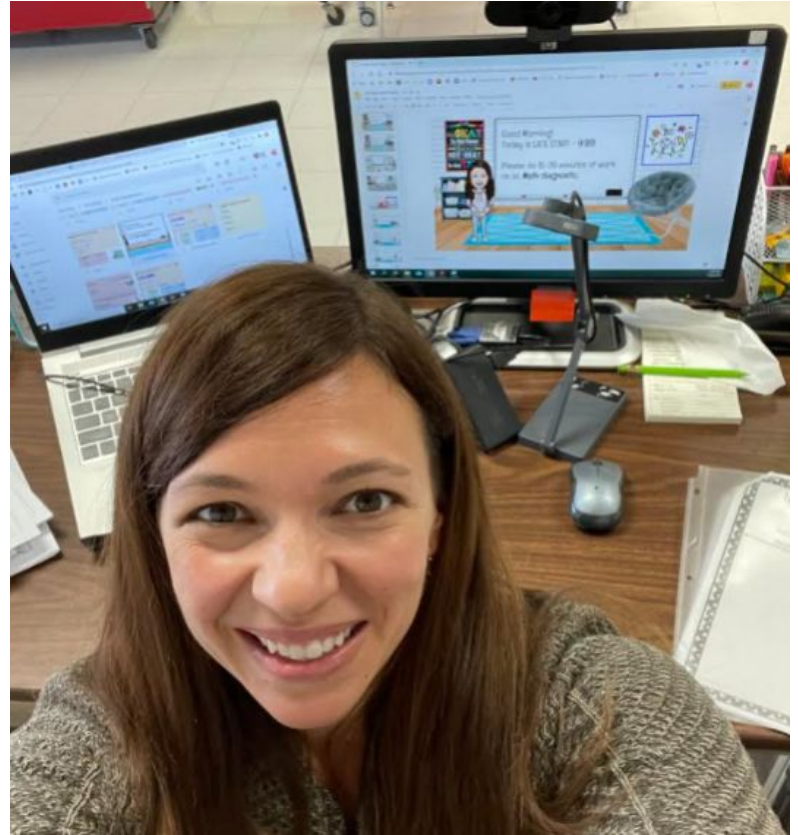
Kim Zielke

Dear BFEE,

Thank you so much for providing us with funding to support this journey of virtual learning in the BVA this year. This past week I was teaching from home on the snow day, and I found I was a little bit at a loss without the use of my doc camera, web camera, double monitor, and the equipment that allows them to all be plugged in and function together. Somehow, having "just one" laptop made it harder to get the job done! Thank you for supporting our technology needs this year, as it's allowed us to more fully engage in the learning experience for our children. I am so thankful for your presence in our Batavia community, schools, classrooms, and now virtual classrooms as well. Your support of Batavia teachers is deeply felt, and so very appreciated. Thanks for all your hard work and dedication to the learning and growth of teachers and students.

With much thanks,

Kim Cocallas

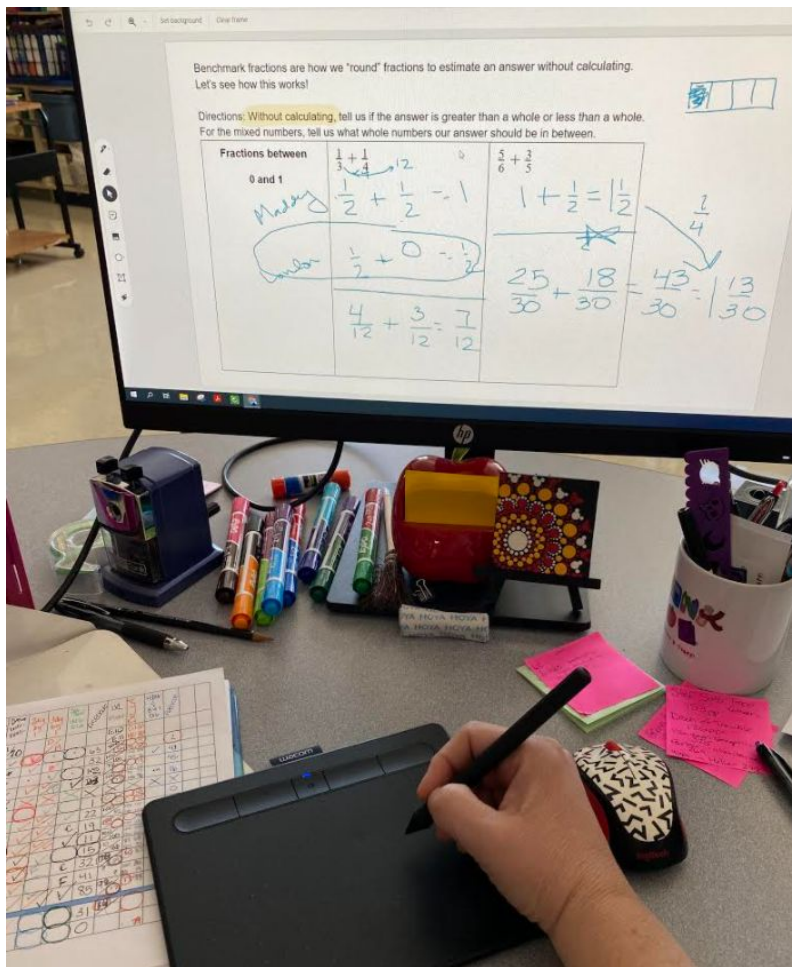




Dear BFEE,

Thank you for scrambling to our sides with support as we began this daunting school year! The USB hub that I received from your generous donation has made it possible for me to easily switch to various virtual learning tools I use daily (document camera, headphones, microphone, lighting, and more). The BVA is incredibly grateful to you!

Colleen Gunderson



I have been using the Wacom tablet during Guided Math to model how to "show my work/thinking." ~Eileen Matos





THANK YOU!