

Stamping Around

Newsletter of the Mid-Cities Stamp Club

Arlington Meetings: First Wednesday @ 7:00 p.m.

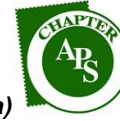
Bob Duncan Center, 2800 S. Center St.

Eules Meetings: Third Wednesday @ 7:30 p.m.

12750 S. Pipeline Rd, #1C (Central Station Marketing)

Lake Granbury Meetings: 4th Tuesday @ 7:00 p.m.

Bentwater Activities Center (adjacent to Bentwater Marina)



CHAPTER
MEMBER



#891-076252

#90

#53-3364

Volume 36, Number 1

<http://www.mid-citiesstampclub.com>

January 2023

Postage Rates & Fees	10/2/2022	1/22/2023
DOMESTIC		
1st Class - 1 oz (retail/metered or PC)	0.60 / 0.57	↑ 0.63 / 0.60
" 2 oz	0.84 / 0.81	↑ 0.87 / 0.84
" 3 oz	1.08 / 1.05	↑ 1.11 / 1.08
" 3.5 oz (maximum)	1.32 / 1.29	↑ 1.35 / 1.32
non-machinable surcharge	+0.39	↑ +0.40 ?
1st Class Flats - 1 oz	1.20	↑ 1.26
" 2 oz	1.44	↑ 1.50
" 3 oz	1.68	↑ 1.74
" 4 oz	1.92	↑ 1.98
" 5 oz	2.16	↑ 2.22
+ 0.20 per ounce up to 13 oz (maximum)	+0.24/ounce	+0.24/ounce
(if rigid, non-rectangular, non-uniform, must be mailed as 1st Class Package)	4.08	4.14
1st Class Package - up to 4 oz	4.80 - 5.60	↑ 4.75 - 5.25
" up to 8 oz	5.40 - 6.10	↑ 5.40 - 5.85
" up to 12 oz	6.10 - 6.85	↑ 6.15 - 6.65
" 13 oz (max for retail)	7.35 - 8.25	↓ 7.50 - 8.25
--> (Commercial base pricing is considerably less!)		
Media Mail - 1 lb	3.49	↑ 3.65
" 2 lbs	4.16	↑ 4.35
" 3 lbs	4.83	↑ 5.05
" 4 lbs	5.50	↑ 5.75
Priority Mail - Flat-Rate/Legal/Padded	9.90 / 10.20 / 10.60	9.65 / 9.95 / 10.40
" Commercial Flat-Rate/Legal/Padded Env.	8.50 / 8.80 / 9.20	7.75 / 8.05 / 8.45
" Small Flat-rate Box (Ret/Comm)	10.40 / 9.00	10.20 / 8.55
" Medium Flat-rate Box (Ret/Comm)	17.05 / 15.00	17.10 / 14.75
" Large Flat-rate Box (Ret/Comm)	22.45 / 19.95	↓ 22.80 / 19.90
Postcard (Domestic)	0.44	↑ 0.48
Certificate of Mailing (domestic) (3817 / 3665 with 3 piece min)	1.75 / 0.50	↑ 1.85 / 0.54
Certified Mail	4.00	↑ 4.15
Insurance (up to \$50 is included with Priority Mail) up to \$50 / \$100 / \$200	2.60 / 3.35 / 4.10	↑ 2.65 / 3.40 / 4.30
Registered (Domestic) \$0 value	14.65	↑ 15.25
\$0.01 - \$ 100 / \$100.01 - \$500	15.25 / 17.55	↑ 15.90 / 18.30
INTERNATIONAL		
Letter & Postcard Airmail All Countries (1 oz) or Canada (2 oz) (variable pricing up to 3.5 oz)	1.40	↑ 1.45
Non-machinable surcharge	+0.39	↑ +0.40
First Class Pkg Int'l (1 to 8 oz)	14.85 - 17.85	↑ 15.75 - 17.40
Priority Mail Int'l Flat Rate Env(4 lbs)	36.85 - 40.45	↑ 36.60 - 44.70
" Canada	29.60	↑ 30.35
Priority Mail Int'l (1 pound, Grp2-20)	48.80 - 60.00	↑ 48.80 - 60.00
Certificate of Mailing (3817/3665)*	1.75 / 0.50/ea	↑ 1.85 / 0.54/ea
See Notice123 at usps.com !	*FCM/MinQty3	*FCM / MinQty 3

USPS 2023 Rate Adjustments

By Peter Elias

The table at left summarizes the current "seasonally adjusted" rates that went into effect on October 2, 2022 (left column) and the new rates (if approved by the Postal Rate Commission) that will take effect on January 22, 2023 (right column).

For the first time in recent history, the January price change will take place on a Saturday, rather than a Sunday! Meaning you could use that for obtaining any "first day of rate" covers if you are so inclined.

The rates in the right column are in **green** if unchanged from the most recent October 2, 2022 rate changes, and **dark red & italic** if they have changed (and also an "up" or "down" arrow as is warranted).

The current list of all USPS domestic and international rates is in "Notice 123", it is 76 pages long. You can find "Notice 123" online <https://pe.usps.com/text/dmm300/Notice123.htm>.

Note that only a couple of rates have actually gone down since the 10/2/2022 temporary increases, and most have gone even higher.

As a very frequent user of Form 3817 (and occasionally Form 3665 and very rarely Form 3606-D), I don't see why the fee for this is increasing so much all of the time. You fill out the receipt, either put on the fee with stamps (or have the clerk issue you a PVI strip) and then it gets postmarked. There is no handling beyond that. For a basic letter item (whether domestic or international), the fee for a "receipt" is well more than the price of the actual postage itself!

Article Index	Page #
USPS 2023 Rate Adjustments	1
Editor's Forum	2
Calendar & Secretary's Report	2
Been There - Done That (AFOL)	3
Club Meeting Minutes	4
Americana Issues	4
The Cover Story	5
Been There - Done That (someone@somewhere)	6
Annual Christmas Party	6, 7
President's Letter	6
Been There - Done That (Redwood Trees)	7
Member & Dealer Ads	8, 10, 11
State Birds & Flowers	8
Been There - Done That (Schloss Tarasp)	9
2023 Membership Renewal Form	10
Meet & Eat Info	11

Stamping Around

Newsletter of the Mid-Cities Stamp Club

Peter Elias, Editor (news@mid-citiesstampclub.com)

Stamping Around is published monthly by the Mid-Cities Stamp Club. Material in this [newsletter](#) may be reproduced in other philatelic publications if the source is acknowledged. Opinions expressed are those of the authors, and do not necessarily represent those of the Mid-Cities Stamp Club or its officers. Some product names and images may be trademarks or registered trademarks, and are used only for identification and explanation, without intent to infringe.

2023 - 2024 MID-CITIES STAMP CLUB OFFICERS & BOARD OF DIRECTORS:

President – Ken Aldridge
First Vice-President – Rick Howell
Second Vice-President – Stanley Christmas
Secretary – Janet Moyer
Treasurer – Judy Christmas

Board of Directors (voting):

Peter Elias Ralph Poore Ken Wills
Immediate Past President: Rich Hildebrandt

Membership in the Mid-Cities Stamp Club is available to anyone of good character interested in philately. Feel free to attend any of our 3 different meeting sites in the greater Dallas / Ft. Worth area! Dues are only \$12 per year (which includes an emailed or online newsletter, or \$22 for mailed newsletters). For more information, the editor is reachable during business hours at (972) 671-0077 or : editor@mid-citiesstampclub.com

For a membership application write to:

Mid-Cities Stamp Club

P.O. Box 2158

Arlington, TX 76004-2158

or visit: <http://www.mid-citiesstampclub.com>



Editor's Forum

By Peter Elias

It appears that we get to keep our Euleless meeting place for the time being; but we may want to look around for an alternate meeting place in the northern Mid-Cities area just in case. If you know of any suitable venues (such as churches or retirement centers) that could offer a free meeting room on the 3rd Wednesday of each month (except December) in that general area (Hurst, Euleless, Bedford, Irving & Grapevine), please contact the club officers.

Thank You!

.... To Byron Sandfield for donating more material to the club. This is basically stamps and "stuff" that he can't purchase for resale, such as basic beginner's collections, so he suggests that the seller leave these with him as a donation to the MCSC. After spending about 8 hours "pre-sorting" this stuff (with a resulting garbage bag full), it's now down to a manageable 3 banker's boxes for further sorting & soaking by others in the club.

And yes, this did all fit into the trunk of my car...



Errata

By Peter Elias

In the December 2022 issue, the *Palmares* had an error; my exhibit "*The 2018 Changes at the Self Service Kiosk Machines, Their Stamps & Postage Labels*" was listed as having a Vermeil Award; it should have been "Gold Award".

Coming Attractions

2023

JAN. 4	MCSC—ARLINGTON Meeting
Program:	EXPO wrap-up AND "Clean Out Your Philatelic Closet"
JAN. 18	MCSC—EULESS Meeting
Program:	Extended Show & Tell and philatelic discussions
JAN. 21	EXPO Planning Meeting
	Spring Creek BBQ, Arlington, 11 AM
JAN. 24	MCSC—LAKE GRANBURY Meeting
Program:	Clean Out Your Philatelic Closet
FEB. 1	MCSC—ARLINGTON Meeting
Program:	Ken Wills will discuss the ISWSC
FEB. 15	MCSC—EULESS Meeting
Program:	Extended Show & Tell and philatelic discussions
FEB. 21	MCSC—LAKE GRANBURY Meeting
Program:	TBD
MAR. 1	MCSC—ARLINGTON Meeting
Program:	Ralph Poore will do a presentation about postcard censorship
MAR. 15	MCSC—EULESS Meeting
Program:	Extended Show & Tell and philatelic discussions

Secretary's Report

By Skip Ely



Applications Received:

Russell Thompson (#647)

New Members:

n/a

Reinstatements:

n/a

Dropped for non-payment of dues:

n/a

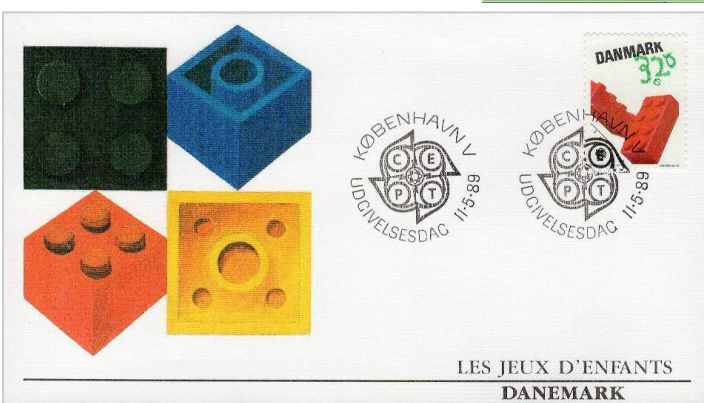
Membership Summary – December 5, 2022

Membership as of November 16, 2022	98
Applications Received (counts as member next month)	1
New Members	0
Dropped for non-payment of dues	(0)
Resignations	(0)
Deceased	(0)
Reinstatements	0
Membership as of December 5, 2022	98

Yup, I'm an AFOL. In case you don't know, that means: "Adult Fan of Legos™". I grew up with Legos in the 1960's. From my high school days and into my early forties, I didn't do anything with Legos, but once I had a son, and he was old enough, we started him on Legos!

2022 was the 90th Anniversary of Legos. Back in 1932, the "Lego Group" was founded by Ole Kirk Kristiansen, a carpenter. The first toys were wooden toys.,

Lego "bricks" as we know them today, were first launched in 1958 and



were initially made of Cellulose Acetate and are now made of ABS (Acrylonitrile Butadiene Styrene).

Early bricks were fairly basic; they were, well "bricks" for the most part, plus some specialty items such as "plates", windows, wheels & tires, etc. Early colors were fairly basic as well, and consisted of black, gray, white, yellow, red & blue. In the mid-1960's, they introduced train sets and tracks. Now there are something like 65 different colors and over 3,700 unique types of pieces available. Sometimes, some of the pieces are only available in particular sets and only in particular colors.

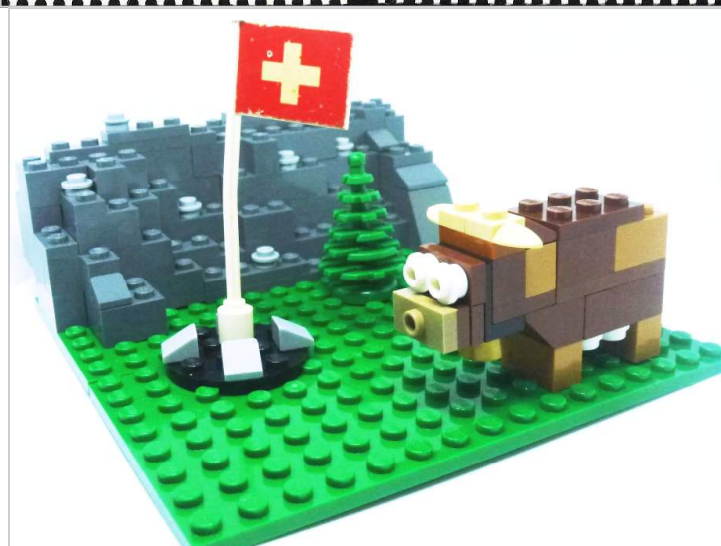
When talking about Legos, they are often described a 2x2, 2x4, 1x6, etc. This refers to the number of "studs" at the top of a brick. "Plates" are generally only 1/3 of the height of a brick and will also have studs. On the other hand, "tiles" are essentially tiles without the studs at the top (i.e.: they have a smooth top surface).

The Danish first day cover above is from 1989 and shows some of the basic "2x2" Legos available in the early days. The stamp shown on the cover was issued for the "Year of the Children".

In 2022, Switzerland issued two stamps featuring "iconic Swiss images" made from Lego bricks. The sFr. 0.90 stamp is for the "B rate" within Switzerland and features a chalet building. The sFr. 1.10 stamp is for the "A rate" and features a cow.

Both stamps were also issued in souvenir sheets, one of which is shown above right and features additional

stickers in the selvage area. All stamps are self-adhesive, but utilize standard perforations (not die-cut).



I decided to dig into my pile of Legos and reproduced the cow (best as I could) using my own Legos. The Swiss flag piece looks worn, because it is over 50 years old and stems from my childhood Legos; all other pieces are all modern ones. So now I've been able to combine both hobbies via a common factor! What other hobbies have YOU combined with philately?

Granbury Meeting Minutes

November 22, 2022

By Madeleine Myers & Dave Stockbridge

Opening:

- The November 22 meeting of the MCSC Lake Granbury Branch began at 7 PM at Bentwater Activity Center, Granbury, TX. Dave Stockbridge opened with a welcome to 8 members and guests.

Show & Tell:

- Les Barton showed and passed around 3 postal cards for the 1910s & 1920s that contained images that changed as the card was moved. This was compared with a recent stamp issued by USPS that also changes as you change the angle of viewing.

Announcements:

- Dave asked for comments and observations about the recently completed EXPO stamp show.
- Jim Myers, who is a dealer that has participated in the show for several years reported that his sales were good, especially on Friday.
- Jim Case reported that he had worked for several hours at the "Beginners" table and that only a few youths were at the show. Most of the Beginners activities was with active collectors that wanted to look over what had been donated with many selecting a few items for their collections.
- Dave also announced that member Bob Coleman was the winner of the show raffle of the USA Scott#1 used stamp that had been donated by one of the dealers.
- Dave reported that he was taking over the club sales and APS sales from Skip Ely, who had managed these activity for several years. Dave will also be offering a "Special Sale" on retired MCSC, OPS and APS books where the asking price will be 50% of the net price listed in the sales books. Members will be allowed to take these books home for closer examination before purchasing stamps. Dave encouraged members to consider submitting books as well as buying stamps.
- The schedule of programs & activities was discussed and there are still 6 open dates with no program or activity yet identified. Anyone with program ideas are welcome to contact Dave and reserve a date.

Break:

- After Announcements, the meeting stopped for 5 minutes and the members then enjoyed cookies brought by Madeleine Myers and drinks.

Program:

- Gary McNamee presented a program accompanied by a power point presentation on the "Champions of Liberty Series". The 8 sets of stamps for the series were issued from 1957 to 1961. Gary explained how President Eisenhower pushed for the series and the 1st stamp issued was for Ramon Magsaysay who was the President of the Philippines.

Door Prizes:

- After the program the following door price winners were drawn: Jim Case, Joe McFarland and Dave Stockbridge. \$10 gift certificates will be mailed by Judy Christmas.

Adjournment:

- The meeting concluded at 8:20 PM.

Americana Issues

By Peter Elias



I'm sure most of you remember this set of 4 stamps that were issued on December 8, 1977 (a whopping 45 years ago!).

These are Scott #1581 to #1584 and are the low values in the "Americana" set of definitives issued between 1975 to 1981.

There were generally printed with a single color on colored stamp paper, with the exception of the multicolor 13¢ & 15¢ issues and the higher 50¢, \$1, \$2 & \$5 issues.

In any case, the main values in the set of sheet stamps can be arranged so that the text on the sides or top/bottom form a frame around the stamps such as shown above.

The groupings would be:

- #1581 - #1585 1, 2, 3, 4 cent (there is no #1583)
- #1590 - #1594 9, 10, 11, 12 cent
- #1595 - #1598 13, 13, 15, 16 cent
- #1603 - #1606 24, 28, 29, 30 cent
- #1608 - #1612 50 cent, \$1, \$2, \$5 (there is no #1609)

There are of course coil & booklet stamps in this series as well, including pre-cancelled coil issues with fractional denominations, such as #1613, 1614, 1615 & 1615C (for various bulk rate & non-profit rates).

Finding these mint is probably easy, finding them properly used "in-period" on cover, especially the values beyond 15¢, is probably more difficult. There are people that collect the "dollar" stamps specifically, and finding usages is of great interest to them. Most desirable is always finding "single stamp" usage that paid for some postage rate.

Why am I writing about these? Back when these were issued, I was teenager and could not yet drive at that time. I remember that when some of these first came out, it was winter in Michigan, and riding my bicycle to the post office in snow, ice & slush was not exactly a good idea (and I don't think that my parents were too keen on driving me there that day either).

I don't exactly remember which of these issues were the ones that I wanted, but it was probably the 1¢ to 4¢ ones. So what to do? I believe that we got a hold of our mail carrier and asked if he could provide them somehow during his mail deliveries. And by golly, that's what he did! He dropped off the stamps (I don't recall how many of each, it wasn't many...) at our front door and we paid him. Now how's that for service?! Could this happen these days? I seriously doubt it ...

The Cover Story

By Rick Howell

Back before Thanksgiving, my wife and I made a trip to St. Louis to visit my wife's childhood girlfriend who was having a birthday (I am not taking my life in my hands by mentioning what birthday!) and to take care of some real estate business with a house my wife owns there. We did find some spare time to visit some of the vineyards outside of St. Louis, tasted some of the local wines, and listened to some of the local musicians. All in all, it was a pretty good time despite having to drive through a snowstorm in Oklahoma.

I don't really travel a lot, but whenever I do, I like to see if I can find a local stamp dealer to visit. Believe me, that is getting harder and harder to do, as so-called "brick and mortar" stamp shops are definitely going by the wayside. So, I checked the internet when I got to St. Louis, and found a dealer named David Semsrott, who had a stamp shop in Kirkwood, one of the many St. Louis communities. His website www.davidsemsrott.com mentioned that he sold stamps, covers, and other things for collectors. Here is a picture of the shop as shown on the internet.



I have to tell you, I had to stop and take a breath when I walked into his shop. Just being in a real stamp shop for the first time in years was a bit overwhelming to



me and brought back so many memories of stamp shops I used to frequent in the past, including Artex and Bob Wallace's shop. I didn't have a whole lot of time or money, but I found a few covers that suited me and David even threw in a Scott's National binder as a bonus. My thanks go out to David for continuing to maintain a real symbol of times past, something I hope will eventually make a comeback. If any of you guys are ever in the St. Louis area, I encourage you to take a little time and visit this store. David also sells on eBay.

I mentioned earlier that we spent some time touring vineyards, but I failed to mention we also stopped into an antique store. I enjoy looking in antique stores in small communities, and sometime find some philatelic bargains. Take a look at the package shown below:



Now, when I first picked this up, I didn't realize it was actually a cover, with some loose stamps, wrapped in plastic and priced at \$2.99. I quickly picked it up, saw some old British stamps and figured, what the heck.....gotta be worth \$2.99. So, I threw it into the basket, paid for it, and brought it back to Texas. After a couple of days, I opened up the book where I had stashed the packet and decided to give it a closer look. The orange stamp on the front of the cover is a 4 pence Great Britain Scott #144 (SG #240) and my 2020 catalog lists it at \$16.00. The additional halfpenny stamp is Scott #127 (SG #215) and lists at \$1.75. Stanley Gibbons lists the 4 pence stamp on cover at £40. Not a bad investment for \$2.99. If you look at the picture on the left, you will notice a big red wax seal and a few other stamps thrown in the packet. The green stamps with the red 2 pence denomination are Scott #130 (SG #225) which catalog at \$22.50 each. I think there are 6 of them in the packet. I still haven't opened the packet.

So guys, be ever on the lookout. You never know what you will find in the strangest places.

See y'all at the meeting.

With the exception of perhaps just one or two club members, undoubtedly the rest of you have email addresses by now.

It's really hard to get by without this particular means of communications these days. Just trying to buy something online generally requires an email address (after all, they're not going to send you an order acknowledgment by snail mail).

The 2021 stamp from Liechtenstein below commemorates the 50th anniversary of emails. The stamp calls it "e-mail" while I use "email". Either is technically correct, but some "style guides" recommend one of the other; we'll leave the hyphen up to you...

So what happened in 1971 then? That was when Ray Tomlinson invented and developed email as we know it today.



He is generally recognized as sending an electronic message between two computers at ARPANET. ARPA is the "Advanced Research Projects Agency" at the US Department of Defense; NET is just short for Network.

Of course back then, emailing was probably limited to certain people in government agencies and later various universities. There is way more detail and history than I can discuss here, so it's

best to visit <https://en.wikipedia.org/wiki/ARPANET> and read up on it.

The big design element on the stamp is of course the "@" symbol, which was also started being used by Ray Tomlinson, since emails were sent to SOMEONE "at" SOMEWHERE, so "@" was substituted for "at".

Emails went mainstream by businesses and individuals towards the late 1980's and early 1990's.

My first computer was a Packard Bell PC around 1987 to 1988, with a small 30 MB (yes: MB, not GB nor TB) hard drive and two floppy drives (remember them?). Having a modem was an expensive add-on, and it did allow me to "dial out", but back then, it was all just "bulletin board" computers.

While the internet got its start around 1983, that was while I was still in college, and to the best of my recollection, being able to send emails for me was in 1994. I do recall that my first email address was with "CompuServe", and it was NOT exactly free. Scouring my spending database from 1994, I found that it cost me \$10 to \$25 per month in "access charges"; in the late 1990's I was spending \$20 to over \$30 per month and by 2003 to 2005, I opted to a \$199 per year plan. Imagine that. Now you can get an unlimited email plan from Yahoo, Google and others for \$0, and no more dialing out! After CompuServe, I also had (and still have) a "Juno" & "Yahoo" account (but don't use actively). In 2001, I registered my internet domain and it came with 1 e-mail address that I still use as of today (along with several others now). Buying this stamp allowed me to relive that part of my life. Too bad I can't use this "email stamp" to "snail mail" a letter from Liechtenstein (which I have visited in the past a few times!). Maybe on the next trip...



Annual Club Christmas Party

By Judy Christmas

This year's Annual Mid-Cities Stamp Club Christmas Party went off without any problems whatsoever. I ordered the meat from Honey Baked Ham and picked our order up myself so that the food was there waiting for the food line to begin.

I ordered a platter of honey baked ham and roasted turkey with cheese slices for twenty-five. A tray of tomatoes and leaf lettuce was included, as well as packets of mustard and mayonnaise, plates and packets with plastic silverware and a napkin. I also ordered two trays of veggies and fruit (next year I will order just one, but they said the trays only fed 12 each) but next year I will only get one of each unless we get more than twenty-five people to sign up.

The party was held on December 7th, Pearl Harbor Day, at the *Bob Duncan Community Center*. Many members brought covered dishes. We had a delicious rice and broccoli casserole and a corn casserole that was so good, a great pea salad, a bowl of fruit and many outstanding desserts. There were 23 present for this party including Herman Dallof's granddaughter Macie and her mother Kathleen.

Ray Cartier said grace before all filed through the buffet line at 6:30. After our tummies were full, we started the gift exchange. As members came in with their gifts, they picked a number out of a bag that Stan had. We started with the person who had number one who choose a gift. Number two could either take one's gift or pick one of his own. A gift could only be taken three times. This all took about an hour, and everyone seemed to have a good time. We were done before 8:30. If you are not coming to the Christmas Parties, you are really missing out on a good time and good eats. Make one of your New Year's resolutions to come to next year's party.

I would like to say a special thanks again to Richard Hildebrandt and his lovely wife Bert for again providing all the feisty decorations for the tables. They always make the hall come alive with the feeling of Christmas in the air. We hope to see more members next year. *[continued on Pg. 7]*

Merry Christmas

&

Happy New Year to Everyone!!

President's Letter

By Ken Aldridge

Greetings! I guess I'm your new club President and am looking forward to an active, lively and fun year!

Beside some of our usual programs by members, I'm planning on a few YouTube presentations by our new Vice President, Rick Howell.

Plus, I'd like to have a few "How I Got Started Stamp Collecting," presentations. I'm thinking maybe a few of these with two members volunteering to tell their story to make up a program.

Of course, we'll have our usual twice a year auctions, the picnic and Christmas Party programs.

I want to thank Rick Howell for agreeing to be VP, Stan Christmas as 2nd VP, Janet Moyer as Secretary and Judy Christmas as Treasurer for the upcoming year.

Please contact me if you have a program to share or any ideas for programs.

Christmas Party Pictures

By Judy Christmas

... continued from page 6



**Been There,
Done That**

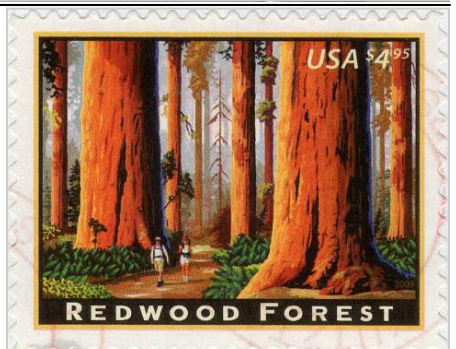
Redwood Trees

By Peter Elias

The "Coast Redwood" trees that one finds in coastal areas of California are amongst the tallest in the USA and are also related to the Giant Sequoia trees of Central California. The redwoods have been featured several times on US stamps, shown nearby as the 2009 \$4.95 Priority Mail stamp, Scott #4378 and Scott #4063, the "Tallest Tree" stamp from the

50-stamp "Wonders of America" sheet of 50 from 2006.

In the picture below from 1980, taken during a 10,000 mile family trip, you can see me standing in front of one the redwood trees in Redwood National Park.



Also during that trip, we did get to drive through a fallen Giant Sequoia tree in Sequoia National Park, identified as "tunnel log" in the photo below. Unfortunately I can't tell whether that was my dad or me behind the wheel of the red Audi 5000 (below), it was 42+ years ago!



Photo Credits: Hans Elias (above)
Either Peter or Hans Elias (right)

CLASSIFIED BOURSE

Announcements

All club members that are current with their dues payments are entitled to FREE ads in this space! Please send ad to: Peter Elias, P.O. Box 940427, Plano, TX 75094-0427, give it to me at a meeting, or e-mail me at: peter@pcelias.com

For Sale

US POSTAGE – from our huge surplus: 1c – 20c : 70% of FV; 21c – 50c : 80% of FV. Send any amount (min \$10), specify group (70%, 80%), and receive mix of values back in FV as indicated above. Clean, F/VF only. Plate or Zip block included for every \$10 remitted. Remit (check or MO) to: J. Myers, P. O. Box 2047, Coppell, TX 75019. TX orders, add 8% sales tax. We cover return postage, S/H charges. Can also take PayPal (same terms). iasdmyers@earthlink.net 5/15

Wanted to Trade

I have general (unsorted) worldwide & used USA stamps (mostly beginning collector material) available to trade for your items such as worldwide revenue stamps & Framas. Contact Peter Elias at peter@pcelias.com 9/16

Wanted

Postally used “ATM” stamps (i.e.: machine vended), such as Framas, from around the world; would prefer on cover or postcard if possible. Contact Peter Elias at info@stvincentstamps.com 8/14

For Sale

I now have a new website in which I have listed all my used **duplicates (many thousands)**. They are arranged in Scott number sequence within country. Do take a look, and select any that you want. I charge 1/3 catalogue value, post paid. The URL is www.kenwills.net Contact me at wills@airmail.net. Happy hunting! 3/19

Philatelic Reference CD's. The following self-running, philatelic reference CD's, each containing hundreds of scans, are now available:

- **APC Conversions 2012-2014 (NY2016 Vermeil Award!)**
 - **Usage of British Empire War Tax Issues** (exhibit)
 - **Airport Philately** (800+ scans of Airports on Stamps)
 - **4 Rings—The History of Audi (Great for any car lover!)**
 - **My Life on Wheels** (autobiography via USA personalized postage)
 - **St. Vincent Philatelic Reference Scans (1,700 items!!)**
 - **St. Vincent Postcards** (300+ postcards from 1900 to 2007)
 - **Vintage Swiss Postcards 1898-1959 (900+ postcards !!)**
- Special MCSC Member price is only \$ 7.95 each (Regular price is \$14.95 to \$19.95).. Contact peter@pcelias.com 11/21

MOVED, BUT SALE CONTINUES! Special discounts to MCSC members for Swiss, Austria, Liechtenstein issues, 25% and LESS of catalog values. All orders postpaid! I also accept PayPal if you wish! John Barrett, Ph.D. Contact info: jstrubel-boy@aol.com 12/14

I have over **10,000 auctions** on delcampe.com @ 35% of Scott or less. Worldwide & US stamps, covers and FDCs. For more info contact Denny Ludlow @ (713) 898-1872 10/15

State Birds and Flowers

by Ken Aldridge

The State Bird and Flowers issue of April 14, 1982, seems to remain a popular sheet for collectors.

There were two perf varieties issued: #1953-2002 are perf 10½ x 11¼, 1953A-2002A are perf 11¼ x 11. Both catalog for about the same price.

It appears the Cardinal is the most popular bird in the US, because it is the State Bird for 7 States.

Next is the Western Meadowlark, the State Bird for 6



States and the Mockingbird is next being the State Bird for 5 States. I was surprised that the Robin is the State Bird for only 3 States.



Another tidbit, in the #1953-2002 issue, the perfs do not meet perfectly at the corners of each stamp. The #1953A-2002A stamps have the perfs meeting perfectly at the corners.

A dry, dull gum was used for this issue, essentially invisible, making each stamp appear to have no gum.

Schloss Tarasp

by Peter Elias



Switzerland has issued many semi-postal stamps featuring various castles. This one from 1978 is Scott #B457 and features the castle in Tarasp.

The town of Tarasp is near Scuol, on the far eastern side of Switzerland in the Canton of Graubünden (Grisons in English); about 15 miles to the east are the

Austrian and Italian borders.

The restored Castle of Tarasp is from the late 10th or early 11th century and is situated at approximately 1 mile above sea level. It is situated on a steep hill overlooking the city of Scuol and the valley below. According to Wikipedia, there's a lot of history of this castle being handed off to different people and even ended up in the hands of Austria, where it was the only Austrian territory within Switzerland in the 18th century.

In 1803, after the creation of the "Helvetic Republic" (hence the name "Helvetia" on Swiss stamps), the castle was taken from Austria and given to Switzerland. That's the history in a nutshell, you can read up more about it at Wikipedia at: https://en.wikipedia.org/wiki/Tarasp_Castle

Now that the mini history lesson is over...

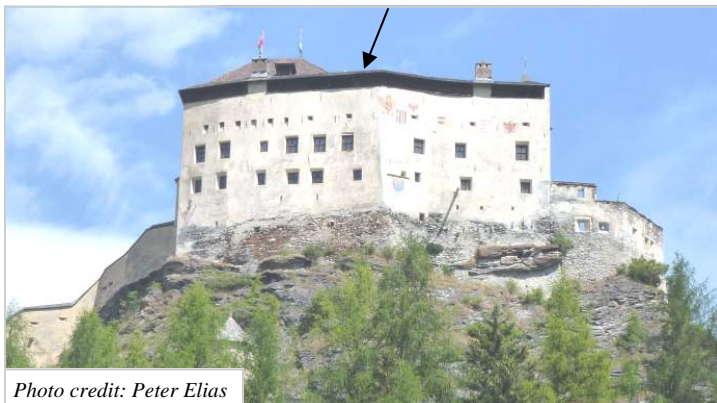


Photo credit: Peter Elias

In 2013, I was glad to finally have the chance to visit this side of Switzerland, and while I've spent a lot of time in Graubünden over the years since 1969 (Davos was our particular favorite summer hiking spot), for some reason, I never had a chance to get to Tarasp Castle. The photo I took of it above, is seen from the opposite side of the stamp view, and granted, the "stamp side" makes it look a lot more interesting. The second view of it below shows you how it looks from the village, where our family was enjoying it's lunch, while waiting for the castle



Photo credit: Annie Elias

tours to resume at 1 PM (note: even castle employees get to take a lunch break). And yes, that photo does actually has me in it for once (and my son off to the right)!

Once at the top and you've paid your entry fee, the view you get is this:



Photo credit: Peter Elias

The picture above was taken from about where the arrow is on the picture to the left. The picture at bottom left taken from around where the arrow is in the photo above.. As you can see, it is a quaint little town, and nice place to visit for an afternoon. Then it was an hour drive back to Davos (via the Flüela Pass), and I love driving over mountain passes!



The center of town with nicely decorated buildings and a church, which looks somewhat plain on the outside, but is REALLY nice on the inside (see bottom photo).



Photo credit: Peter Elias

stampsuniversal.com

Visit us at area Stamp Shows



- * TSDA
- * HOUPEX
- * EXPO

US/WW Classics, Modern, SONS

Visit our new online store

@ <http://www.stampsuniversal.com>

James D. Myers
P. O. Box 2047
Coppell, TX 75019
(972) 304-1671



Exp. 12/22

cunninghamstamps@aol.com

Exp.12/23

(214) 546-1179

Cunningham Philatelics

Philatelic Consultants

Elusive Items
Stamps and Covers

Collections
Appraisals

THOMAS L. CUNNINGHAM
APS # 082424, TSDA

P.O. Box 863237
Plano, TX 75086-3237



Exp.12/22

Specializing in United States Stamps
Member APS, ASDA, NSDA

Kirk McKenzie
kirkmckenzie@cox.net

1001 North Fulton
Tulsa, Oklahoma 74115
918-836-1681

2023 Mid-Cities Stamp Club Membership Renewal

__Mr. __Mrs. __Ms. __Miss Name: _____ Date of Birth: __/__/__
(First) (M.I.) (Last) (Complete if under 18)

__ Check here if information is unchanged from 2022 and skip to the signature line below.

Home Address: _____ City _____ State _____ Zip _____ - _____

Email: _____ Home Phone: _____ Mobile: _____

Collecting Interests: _____

Other Stamp Organizations with membership numbers (if applicable): _____

__ APS # _____ __ATA # _____ __TPA # _____ Other: _____

Permission is granted to make the information above available to other club members. Indicate anything you do NOT want shared: _____

Signature: _____ **Date:** __/__/__

Membership Level:

__ \$12 Regular Adult (emailed or online newsletter)

__ \$22 Regular Adult (with mailed newsletters)

__ **\$25 Sponsor Membership**

__ \$35 Sponsor (with mailed newsletters)

__ \$6 Additional Adult (only 1 newsletter copy)

__ \$4 Youth (under 18; add \$10 if printed newsletter is desired.)

Make check out to 'Mid-Cities Stamp Club' and mail this form with payment to:

Mid-Cities Stamp Club, P.O. Box 2158, Arlington, TX 76004-2158



MEET & EAT for January 2023

by Judy & Stanley Christmas

"Meet & Eats" are held before our club meetings. All club members and their guests are welcome. We will gather at 5:00 PM and start ordering at that time. However, latecomers can order when they arrive or just come by for a visit. Meals should be over around 6:15 to 6:30 PM with the Arlington new meeting start time now being at 7:00 PM rather than 7:30 PM.

Meet & Eat locations will be included the club's broadcast messages. NOTE: All locations are subject to change.

--> See updates for mask policies as published or announced by local, regional & state authorities or individual restaurants.

ARLINGTON

January 4 Jay Jay Café, 1001 S. Bowen
Arlington, TX 76013 (817)-861-1060

EULESS

January 18 Chili's, 2101 Airport Freeway
Bedford, TX 76021 (817)-545-0012


GRANBURY

January 24 Grumps Burgers, 3503 S. Hwy 377
Granbury, TX

Mid-Cities Stamp Club "Stamping Around" Newsletter
c/o Peter Elias
PO Box 940427
Plano, TX 75094-0427

Don't Forget:
EXPO Planning Mtg - Jan. 21

Estate Appraisals



Topper Stamps & Postal History

Jonathan Topper
10480 Grant Road
Suite 117
Houston, TX 77070
832.518.6558

jonathan@topperstamps.com
www.topperstamps.com

Wanted to Buy

Texas Precancel Stamps. Contact Rick Howell at
Rick.howell1@tx.rr.com

5/19

Wanted to buy or trade for: **Worldwide unusual EFOs, postal counterfeits**, Odd US 20th century auxiliary markings, US 1934 and 1935 Christmas Seals on and off cover and publicity material, Korean War postal history from US and other UN contingents, and any other US philatelic material with an interesting story. John Hotchner, PO Box 1125, Falls Church, VA 22041, or imhstamp@verizon.net

2/15

Various USA **Scott #C2 & C3 on covers & cards** are needed for my U.S Air Mail collection. Please forward scans of the covers / cards along with asking price(s) to Don Jones at adjaams@aol.com Thank you.

2/21

→ YOUR FREE AD COULD BE HERE ← !
(for MCSC club members only)