

# Carestream NDT

A World Leader in NDT  
Products and Solutions

**Digital Products  
Catalog 2020-21**





## TABLE OF CONTENTS

<b>INDUSTREX DIGITAL VIEWING SOFTWARE</b> .....	3
<b>HPX-DR</b>	
HPX-DR 3543 PE Non-Glass .....	5
HPX-DR 2530 GH High-Resolution Compact .....	6
HPX-DR 2530 GC High-Speed Compact .....	6
HPX-DR 3543 & 2530 Accessories .....	7
<b>HPX-CR</b>	
HPX-1 <i>Plus</i> Digital System .....	8
HPX-PRO Portable Digital System .....	9
HPX-1 <i>Plus</i> & HPX-PRO Accessories .....	10-12
<b>DR &amp; CR HARDWARE UPGRADES</b> .....	13
<b>INDUSTREX DIGITAL IMAGING PLATES</b>	
ALL PLATES OVERVIEW .....	14
INDUSTREX Flex GP .....	15
INDUSTREX Flex HR .....	16
INDUSTREX Flex XL Blue .....	17
INDUSTREX Flex HR-PRO .....	18
INDUSTREX Digital Imaging Cassettes .....	19
<b>Customer Order Services</b> .....	20
<b>Product Info &amp; Technical Services</b> .....	20

# Carestream NDT

At Carestream NDT we work closely with our distributors and end users for valuable insight on product improvements.

We are committed to building supportive and interactive relationships, using customer feedback to create technologically advanced and award-winning products and services.

We listen to the challenges and needs of the industry with a solutions-based approach to bring the right combination of digital or film solutions to increase productivity and profitability.

We offer real value, because we value our relationships with NDT technicians and professionals worldwide.

**Carestream NDT and you.  
We're better together.**



## INDUSTREX DIGITAL VIEWING SOFTWARE

All of Carestream NDT DR and CR products run on our all-in-one INDUSTREX software, so you don't need to purchase costly add-on modules to utilize the benefits of both CR and DR.

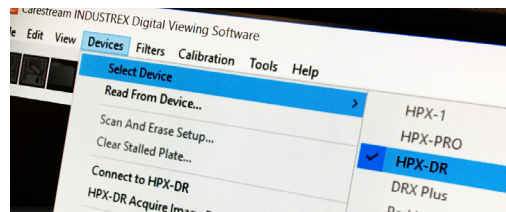
# INDUSTREX DIGITAL VIEWING SOFTWARE

INCREDIBLY SHARP IMAGE PROCESSING. ENHANCED DEFECT DETECTABILITY.



Our INDUSTREX Digital Viewing Software incorporates industry-leading image analysis tools, file sharing and storage management features. Our modular architecture is an all-in-one software suite that eliminates the need to purchase costly add-on modules for both CR and DR image acquisition. Upgrades are included over the life of your capture device, eliminating the expense of purchasing upgrades and ensuring you have the latest features and functionality.

- SETS THE BAR FOR A HIGHER LEVEL OF IMAGE PROCESSING RESOLUTION THAT WILL INCREASE ACCURACY IN ANALYSIS WITH ENHANCED DEFECT DETECTABILITY
- VERSATILE SOFTWARE THAT INCLUDES ALL MODULES FOR CR AND DR
- TOOLS THAT SIMPLIFY USE FROM EXPERIENCED USERS TO CASUAL OPERATORS
- IMAGE PROCESS AUTOMATION TOOLS STREAMLINE IMAGE ANALYSIS TIME FOR HIGHER THROUGHPUT



- Modular architecture – an all-in-one software suite
- Upgrades are included over the life of your capture device
- DICOM compliant, the software complies with industry standards for image storage, retrieval, and transmission.

## SYSTEM HARDWARE



### DESKTOP HP z4 Generation 4

Windows 10 Professional 64-bit, Intel Xeon W-2125 4.0 GHz, RAM 32 GB, NVIDIA QUADRO RTX 4000-8.0 GB, Hard Drive 2.0 TB 7200 SATA, mirrored RAID.

### MONITORS (models above or equal)

- 3 MP Color - Model: GUP2103CMI
- 5 MP Monochrome - Model: ZSP2105CMI



### LAPTOP HP zBook 17 Generation 6

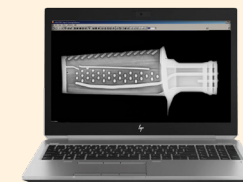
Windows 10 Professional 64-bit, Intel CORE i7-9850H 2.6 GHz, RAM 32 GB, NVIDIA QUADRO P3200-6.0 GB, Display 17.3" Dream Color 4K (8MP), SSD Drive 1.0 TB.



5 MP Monochrome



3 MP Color



Laptop



Desktop PC

# INDUSTREX DIGITAL VIEW STATIONS

FOR CR AND DR DIGITAL SYSTEMS.



**5MP Monochrome Monitor and Desktop PC**  
5 mega-pixel 21.3" high resolution, DICOM/  
DICONDE calibrated high brightness monitor.

#### HP z4 Generation 4

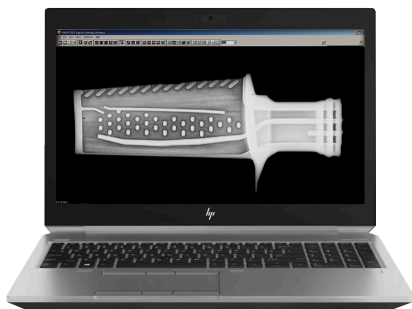
Windows 10 Professional 64-bit, Intel Xeon W-2125 4.0 GHz, RAM 32 GB, NVIDIA QUADRO RTX 4000-8.0 GB, Hard Drive 2.0 TB 7200 SATA, mirrored RAID, keyboard, optical mouse, INDUSTREX Digital Viewing Software Version 5.2.



**3MP Color Monitor and Desktop PC**  
3 mega-pixel 21.3" DICOM/DICONDE calibrated  
monitor - accurate color and gray scale image display.

#### HP z4 Generation 4

Windows 10 Professional 64-bit, Intel Xeon W-2125 4.0 GHz, RAM 32 GB, NVIDIA QUADRO RTX 4000-8.0 GB, Hard Drive 2.0 TB 7200 SATA, mirrored RAID, keyboard, optical mouse, INDUSTREX Digital Viewing Software Version 5.2.



#### Laptop: HP zBook 17 Generation 6

Windows 10 Professional 64-bit, Intel CORE i7-9850H 2.6 Ghz, RAM 32 GB, NVIDIA QUADRO P3200-6.0 GB, Display 17.3", Dream Color 4K (8MP), SSD Drive 1.0 TB, keyboard, optical mouse, INDUSTREX Digital Viewing Software Version 5.2.

## ORDER INFORMATION



#### 5MP Monochrome Monitor and HP z4 Generation 4 View Station

**Cat. No.**

1009075

With Transport Case for PC Monitor

1012269



#### 3MP Color Monitor and HP z4 Generation 4 View Station

**Cat. No.**

1009026

With Transport Case for PC Monitor

1012244



#### View Station Transport Case

Constructed of aluminum laminated fir plywood with high density foam inserts. Includes handle and front wheels for easy transportation.



#### Laptop: HP zBook 17 Generation 6

**Cat. No.**

1009042



# HPX-DR 3543 PE NON-GLASS DETECTOR

BREAKTHROUGH TECHNOLOGY FOR NDT FIELD IMAGING

Carestream NDT provides breakthrough technology for NDT field imaging with our non-glass DR detector. The HPX-DR 3543 PE Non-Glass detector design incorporates a tougher material instead of glass for maximum durability against the rigors of NDT field work. The HPX-DR Non-Glass detector virtually eliminates costly repairs for broken glass.



- 139 µm pixel pitch for high-resolution imaging
- Large format (350 x 430 mm) and thin profile (14.7 mm)
- Tungsten shielding for maximum electronics protection and high exposure applications
- Protective, weatherproof enclosure – perfect for remote fieldwork
- Close-to-edge imaging capability
- Robust wireless connectivity
- Uses the same INDUSTREX software on your current Carestream NDT digital products
- Powerful lithium-ion batteries with battery ‘hot-swap’ to keep the detector running during battery change
- Optional protective case and mount kit adds even more durability and product longevity
- Runs on our all-in-one INDUSTREX software, no need to purchase costly add-on modules to utilize the benefits of both CR and DR.

 BAM Certified



Comes with a 2-Year warranty and free loaner (US and Canada only)



The Exposure Interface Box (EIB) enables timing coordination of HPX-DR Detector image capture with the x-ray pulse generation.

See page 7 for details.

## ORDER INFORMATION

Components	Cat Number
HPX-DR 3543 Panel	8609679
<b>Accessories</b>	
Tether Kit	1750090
Power over IP	8602799
Battery Charger	8615460
Battery	8618183
Utility Case	8603276
Transport case	8603268
Network Access Point	Country Specific
Laptop	1009042
Desktop 5 MP Mono Monitor	1009075
Desktop 3 MP Color Monitor	1009026

## ONLY AVAILABLE IN US

Contact your local sales representative for pricing.

System Configuration	Cat Number
HPX-DR 3543 Panel	8618886
Includes:	
Laptop	
Tether Kit	
Power over IP	
Battery Charger	
2 Batteries	
Utility Case	
Transport Case	
Network Access Point	



See page 3-4 for view station details and INDUSTREX Software.

# HPX-DR 2530 COMPACT DETECTORS

HIGH RESOLUTION OR HIGH SPEED FOR IMAGING FLEXIBILITY

The HPX-DR 2530 detectors are designed specifically for customer's looking for reliable NDT imaging in a compact and durable DR package.



- Compact size (250 x 300 mm) and thin profile (14.7 mm) for imaging flexibility
- Access to confined areas or between objects with its compact size
- Tungsten shielding for maximum electronics protection and high exposure applications
- Protective, weatherproof enclosure
- Close-to-edge imaging capability
- Robust wireless connectivity
- Lithium-ion batteries with battery 'hot-swap' to keep the detector running during battery change
- Runs on our all-in-one INDUSTREX software, no need to purchase costly add-on modules to utilize the benefits of both CR and DR.

## HPX-DR 2530 GH HIGH-RESOLUTION DETECTOR

- 98 µm resolution: see more with the HPX-DR 2530 detector – it has a 98 µm resolution for optimal image defect visibility.

## HPX-DR 2530 GC HIGH-SPEED DETECTOR

- 145 µm resolution
- Less required dose for shorter exposure times and faster throughput. Achieve faster throughput for imaging and accelerate the process of analysis and reporting.



The Exposure Interface Box (EIB) enables timing coordination of HPX-DR Detector image capture with the x-ray pulse generation.

See page 7 for details.

## ORDER INFORMATION

System Configurations	Cat Number
HPX-DR 2530 GH	8619827
HPX-DR 2530 GC	8620346
<b>Accessories</b>	
Tether Kit	1750090
Power over IP	8602799
Battery Charger	8615460
Battery	8617060
Utility Case	8619835
Transport case	8603268
Network Access Point	Country Specific
<b>Viewstations</b>	
Laptop	1009042
Desktop 5 MP Mono Monitor	1009075
Desktop 3 MP Color Monitor	1009026



Comes with a 2-Year warranty and free loaner (US and Canada only)





# HPX-DR ACCESSORIES

FOR HPX-DR 3543, HPX-DR 2530 GH AND 2530 GC

	Cat. No.
<b>HPX-DR 3543 Non-Glass</b>	
Battery (qty 1)	8618183
HPX-DR Detector Utility Case	8603276
<b>HPX-DR 2530 GH &amp; GC Compact</b>	
Battery (qty 1)	8617060
HPX-DR Detector Utility Case	8619835
<b>HPX-DR 3543 and 2530 Common Accessories</b>	
Exposure Interface Box for Golden Engineering Sources	8623415
Pipe Cleat Attachment	8618712
HPX-DR Detector Transport Case	8603268
Detector Weight Bearing Cover	8618704
Tether Kit	1750090
Power over IP with/Global AC Power Cables	8602799
Battery Charger	8615460
Network Access Point for US	1006303
Network Access Point for Great Britain	1006311
Network Access Point for Latin America	1006329
Network Access Point for Australia/New Zealand	1006345
Network Access Point for Brazil	1006352
Network Access Point for Canada	1006360
Network Access Point for China	1006378
Network Access Point for Egypt	1006428
Network Access Point for Israel	1006436
Network Access Point for Japan	1006451
Network Access Point for Korea	1006469
Network Access Point for Russia	1006477
Network Access Point for Singapore	1006758
Network Access Point for Taiwan	1006774

## Exposure Interface Box (EIB)

The pulse generator interface enables timing coordination of the HPX-DR Detector image capture with the x-ray pulse generation. Provides a standalone battery powered Wi-Fi access point and extended WiFi to HPX-DR Detectors and optionally provides a communications interface to DR-supported pulse generator models.



## Pipe Cleat Attachment and Weight Bearing Cover



# HPX-1 PLUS DIGITAL CR SYSTEM

FULL WIDTH READER CAPABLE OF RUNNING EXTRA-LONG IMAGING PLATES



 **BAM** Certified

The HPX-1 *Plus* system has a wide dynamic range with high sensitivity, making it ideal for almost any type of imaging application. Our exclusive positive pressure filtered air system keeps dust and dirt out for cleaner images in both the laboratory and in remote operations. With a shock and vibration resistant design your team can image in the harshest of environments bringing a new level of confidence to digital imaging in the field.

Whether you're using a gamma or X-ray source, the HPX-1 *Plus*' high sensitivity can help reduce shot time. It shows exceptional performance in weld applications, delivering weld-quality images consistently and dependably.

The complete system ships pre-configured and is ready to operate with a few simple connections. The powerful, easy-to-learn INDUSTREX Digital Viewing Software intuitive interface minimizes training time; your operators will be up and running quickly.

## ORDER INFORMATION

### Cat. No./Description



#### DESKTOP

##### 1008986

HPX-1 *Plus* 5MP Mono Monitor

##### 1012087

HPX-1 *Plus* 5MP Mono Monitor  
With transport case

##### 1008911

HPX-1 *Plus* 3MP CLR Monitor

##### 1012061

HPX-1 *Plus* 3MP CLR Monitor  
With transport case



#### LAPTOP

##### 1008952

HPX-1 *Plus* with Laptop

##### 1012145

HPX-1 *Plus* with Laptop  
With transport case



See page 3-4 for view station details and INDUSTREX Software.



# HPX-PRO PORTABLE CR SYSTEM

NARROW WIDTH FOR HIGH THROUGHPUT DIGITAL IMAGING IN RUGGED NDT ENVIRONMENTS



 **BAM** Certified

The HPX-PRO Portable CR System is lightweight (35 lbs/16 kg) and narrow width imaging plate reader that sets-up in less than five minutes. It is a narrow width imaging plate reader that processes a weld in up to a minute, producing high-quality digital images for quick analysis and rapid final reporting. Built for field imaging, replaceable air filters to keep out dust and dirt. Magnetized doors seal the interior when not being used. Each door has an extension to support up to a 17" long plate.

**Rapid Job Setup:** INDUSTREX Software setup of customer parameters, automated electronic FLASH creation on each image and automatic incremental shot numbering makes imaging faster and easier. The HPX-PRO keeps up with film in batch mode; define shot parameters, input how many welds to shoot, set-up weld numbering and turn on auto increment to name welds as the plates process. It scans and erases in one pass. The HPX-PRO is designed to process a weld a minute (based on 5-3/4" imaging plate length). Including scanning, erasing and image display with a pre-set EDGE filter applied.

## ORDER INFORMATION

### Cat. No./Description



**LAPTOP**  
**1067990**

HPX-PRO CR Laptop with transport case



**DESKTOP**  
**1067966**

HPX-PRO CR with Desktop PC & 3MP Monitor

**1067974**

HPX-PRO CR with Desktop PC & 5MP Monitor



See page 3-4 for view station details and INDUSTREX Software.

## HPX-1 PLUS & HPX-PRO ACCESSORIES

DIAGNOSTIC TOOL KIT FOR X-RAY AND GAMMA ENERGY CALIBRATION

For use with HPX-1 *Plus* and HPX-PRO CR Systems. Eliminate system calibration guesswork. Simple to use, reduces the time for checking system calibration down to only a few minutes. All system parameters are checked, reported and documented for proof your system was in proper calibration for a specific job.

### Includes:

- Certificate of Compliance
- Phantom Assembly Built
- Phantom Tray (Including Label 9G4040)
- Industrex HR 14 x 17 Screen
- Flexible Cassette, SFC 6 x 10
- Flexible Cassette, SFC 14 x 17
- CR Cassette 14 x 17 without Copper
- HVL Copper Filter
- HVL Aluminum Filter
- SAW and Documentation Kit F / Diagnostic System
- Tool Screen Extractor
- Locking Carrying Case

HPX-1 Plus and HPX-PRO Diagnostic Tool Kit

Cat. No.

1008804





## HPX-1 PLUS & HPX-PRO ACCESSORIES



### 5MP Monochrome Monitor

5 mega-pixel 21.3" high resolution, DICOM/DICONDE calibrated high brightness monitor.

**Cat. No.**

1008762



### 3MP Color Monitor

3 mega-pixel 21.3" DICOM/DICONDE calibrated monitor - accurate color and gray scale image display.

1816933



### View Station Transport Case

Designed specifically for your HPX-1 Plus View Station. Constructed of aluminum laminated fir plywood with high density foam inserts. Includes handle and front wheels for easy transportation.

1012277



### Reader Transport Case

Designed specifically for your HPX-1 Plus Reader. Constructed of aluminum laminated fir plywood with high density foam inserts and heavy-duty swivel casters.

1012293



### Cassette Tool (see page 14)

8423600



### INDUSTREX Compatible Bar Code Scanner

Designed to read most common 1D Bar codes. Scratch-resistant tempered glass exit window built for continuous use in rugged environments. Plastic housing with rubber hand grip and single USB cable connectivity.

1062355



### HPX-1 Plus System Power Cords

United States

8749996

Europe

1493865

United Kingdom

1962281

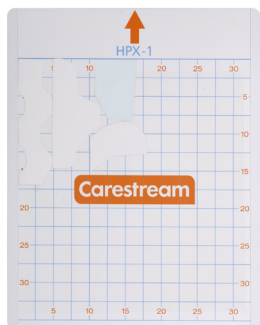
Japan

8241010

China

8032849

## HPX-1 PLUS & HPX-PRO ACCESSORIES



### HPX-1 *Plus* Digital Plate Carrier

The Digital Plate Carrier offers users a way to scan small or irregular shaped imaging plates. Carrier will accommodate shapes and sizes as small as 1"x1". You can also use the Carrier to combine multiple plates into one scan and improve your overall throughput. The Carrier comes complete with a protective case and simple instructions for use. This item requires the following upgrades included in quote.

- 1) INDUSTREX Software v3.5 or higher
- 2) New upgraded feed tray (Cat #: 1014265)
- 3) HPX-1 *Plus* MR-2 hardware update

Cat. No.

1008796

### Carestream NDT Screen Cleaner - 8 oz.

Recommended for use with INDUSTREX Flex GP and HR Digital Imaging Plates.

8607020

### HPX-PRO DIGITAL SYSTEM ONLY ACCESSORIES

#### 24-volt Battery

1068014

#### CR Replacement Feed Trays (2)

1068022

#### Replacement Air Filter

1068048

#### HPX-PRO Replacement Soft Cover

1068055

#### HPX-PRO Replacement Power Supply

1068063

#### HPX-PRO Vehicle Transportation Bracket

1070861



# HARDWARE UPGRADES

FOR HPX-DR, HPX-1 PLUS, HPX-PRO

## PREVIOUS PURCHASED LICENSE IS REQUIRED TO UPGRADE

When ordering an upgrade please make sure to include on the order the license number of the software from the current machine(s) so it can be transferred to the new system. Orders cannot be processed for upgrades without this information.



### DESKTOP

#### HP z4 Generation 4

Windows 10 Professional 64-bit, Intel Xeon W-2125 4.0 GHz, RAM 32 GB, NVIDIA QUADRO RTX 4000-8.0 GB, Hard Drive 2.0 TB 7200 SATA, mirrored RAID, keyboard, optical mouse, INDUSTREX Digital Viewing Software Version 5.2.

Cat. No. 1008895

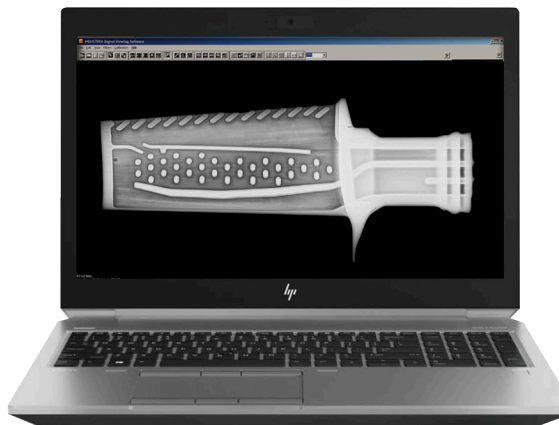


### LAPTOP

#### HP zBook 17 Generation 6

Windows 10 Professional 64-bit, Intel CORE i7-9850H 2.6 Ghz, RAM 32 GB, NVIDIA QUADRO P3200-6.0 GB, Display 17.3", Dream Color 4K (8MP), SSD Drive 1.0 TB, keyboard, optical mouse, INDUSTREX Digital Viewing Software Version 5.2.

Cat. No. 1008895



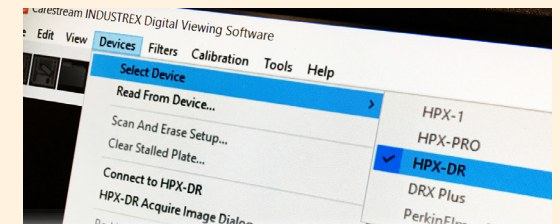
# SOFTWARE FEATURES

FOR HPX-DR, HPX-1 PLUS, HPX-PRO



Our Digital Viewing Software upgrades are included over the life of your capture device, eliminating the expense of purchasing upgrades and ensuring you have the latest features and functionality.

The modular architecture is an all-in-one software suite that eliminates the need to purchase costly add-on modules for both CR and DR image acquisition.



DICONDE compliant, the software complies with industry standards for image storage, retrieval, and transmission.



See page 3-4 for view station details and INDUSTREX Software.



# DIGITAL IMAGING PLATES

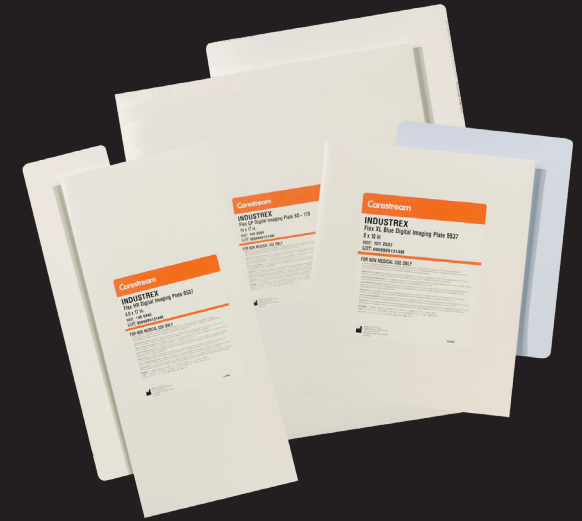
FOR INDUSTRIAL X-RAY APPLICATIONS (NON-MEDICAL)

## Carestream NDT INDUSTREX Flex GP, HR and XL Blue Digital Imaging Plates

Using standard techniques, the plate is exposed just like film. The CR reader scans the plate and produces a high-quality digital image on the display.

Carestream NDT INDUSTREX Digital Imaging Plates are a natural fit for computed radiography in NDT applications. Our digital imaging plates offer the flexibility of film without the need for wet processing, allowing you to capture and read images quickly and easily, both in the field and in the lab.

- Optimize captured images and store or share them digitally
- XL Blue digital imaging plate features approximately 35% higher resolution than our Flex HR plate. (Depending on shot quality, spatial frequency and beam conditions and energy.)
- **Flexible** – wrap around most shapes
- **Sharp** – better resolution than high-speed films, and a suitable replacement for many applications
- **Multiple Sizes** – to cover a wide range of applications.
- **Portable** – with the Carestream NDT digital systems, image capture in remote areas is easier than ever
- **Versatile** – use in a rigid or flexible cassette
- **Efficient** – phosphor plates can be erased and reused thousands of times, require less exposure than film, and provide faster image access
- **Certified** – when used with Carestream NDT digital systems, all plates meet requirements for the highest system class: EN 14784-1 and ASTM E 2446



### Compatible CR Equipment

- HPX-1 Plus Digital System
- HPX-PRO Portable Digital System
- ACR2000/2000i

### Recommended Uses

Carestream NDT INDUSTREX Digital Imaging Plates are available in many sizes, and are designed for a wide variety of CR NDT applications, including:

- Aerospace
- Castings
- Oil & Gas
  - Erosion and Corrosion
  - Pipeline Inspection
  - Welded Fabrication
- Infrastructure
- Military/DoD

HR and XL Blue imaging plates have been BAM Design-type tested in the HPX-1 Digital System (certificates BAM/ZBF/015/12 and BAM/ZBF/016/12, respectively).

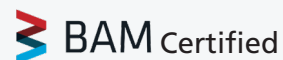
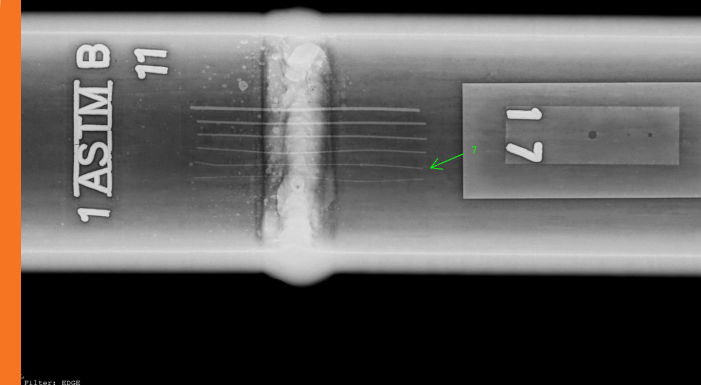


# FLEX HR DIGITAL IMAGING PLATES

FOR INDUSTRIAL X-RAY APPLICATIONS

Flex HR is a reusable, high-resolution, flexible, storage phosphor imaging plate.

Size	Cat. No.	Size	Cat. No.
<b>Inches</b>		<b>Centimeters</b>	
3.5 x 10	8094922	10 x 24	1178565
3.5 x 17	1904267	7 x 48	1738418
4.5 x 10	1680214	10 x 40	1597921
5 x 7	8491615	10 x 48	1738426
6 x 10	1734334	30 x 40 c	8425159
8 x 10	1775576	35.56 x 51	1049592
4.5 x 17	1466945	35 x 152	8082596
6 x 17	1734185		
7 x 17	1848688		
10 x 12	1174424		
14 x 17	8360521		
14 x 36	1434257		
14 x 51	1028380		
<b>mm/cm/inches</b>			
70 mm x 5.66 inches	1734094		
70 mm x 20.3 cm	8002230		
70 mm x 25.4 cm	8802324		
70 mm x 13 inches	1011741		
70 mm x 43 cm	8348641		
70 mm x 24 inches	1006105		
70 mm x 80 cm	1734144		
70 mm x 36 inches	1004746		
70 mm x 60 inches	1035112		



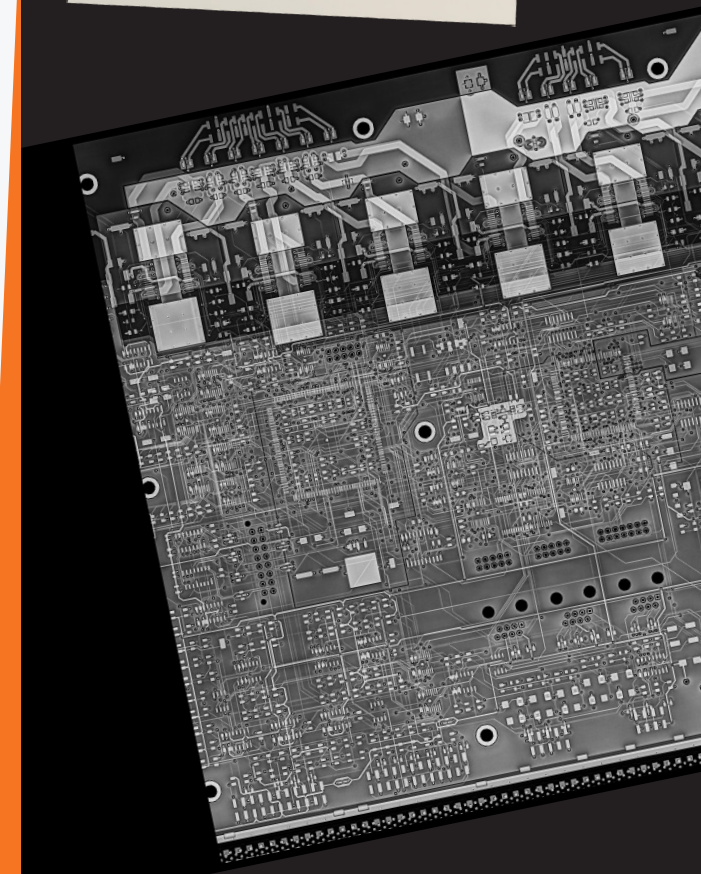


# XL BLUE HIGH-RESOLUTION DIGITAL IMAGING PLATES

FOR INDUSTRIAL X-RAY APPLICATIONS

XL Blue is a reusable, high-resolution, flexible, storage phosphor imaging plate. Meets the highest ASTM E2446 class when used with Carestream NDT high-performance digital systems.

Size	Cat. No.
<b>Inches</b>	
5 x 7	1012681
3.5 x 10	1012699
4.5 x 10	1012624
4.5 x 17	1012608
8 x 10	1012632
10 x 12	1012574
7 x 17	1012640
14 x 17	1012665
<b>mm/cm/inches</b>	
70 mm X 20.3 cm	1012731
70 mm X 25.4 cm	1012707
70 mm X 13 inches	1012764
70 mm X 43 cm	1012715
<b>cm</b>	
10 X 40 cm	1012616
10 X 24 cm	1012582
30 X 40 cm	1012673



# FLEX HR-PRO HIGH-RESOLUTION DIGITAL IMAGING PLATES

FOR INDUSTRIAL X-RAY APPLICATIONS

This specialized line of laminated high-resolution (HR) imaging plates are designed for outdoor industrial field radiography, to provide a longer usable life and improved overall ROI for HPX-PRO users. This plate can be used in either gamma or x-ray radiography applications, and has the same image quality as our current HR plate. Available in a full range of sizes specifically for the HPX-PRO.

## Size

**Inches** **Cat. No.**

4.5 x 10 1753235

3.5 x 17 1753136

5 x 7 1753276

3.5 x 10 1753110

4.5 x 17 1753243

6 x 17 1753292

4.5 x 36 1753250

## mm/inch

70 mm x 8 inch 1752948

70 mm x 10 inch 1752955

70 mm x 13 inch 1752963

70 mm x 17 inch 1752971

70 mm x 24 inch 1752997

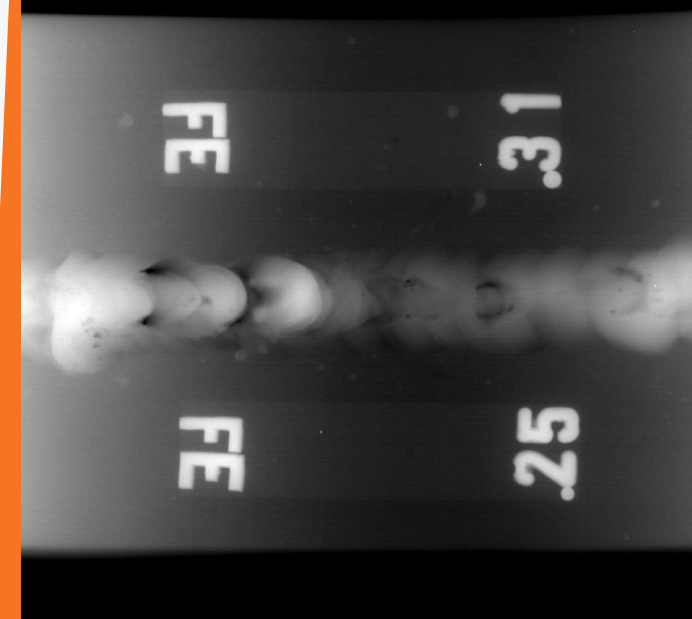
70 mm x 36 inch 1753029

70 mm x 60 inch 1753037

## cm

10cm x 24cm 1753193

10cm x 48cm 1753219



# DIGITAL IMAGING CASSETTES FOR HPX-1 PLUS SYSTEMS

FOR INDUSTRIAL X-RAY APPLICATIONS

To be used with HPX-1 *Plus* Systems. Rigid cassettes with flexible plates inside (sold separately) are specifically designed for daylight applications. Available with or without copper filter. All rigid cassettes incorporate a 10-mil (254 µm) Cu rear screen for backscatter as standard.

## Digital Imaging Cassettes

	Cat. No.
<b>WITHOUT COPPER FILTER</b>	
CR Cassette / 14 x 17 inch or 35 x 43 cm	1889344
CR Cassette / 10 x 12 inch or 25 x 30 cm	1735083
CR Cassette / 10 x 8 inch or 25 x 20 cm	1779461
<b>WITH 10 MIL COPPER FILTER (Front copper screen included)</b>	
CR Cassette / 14 x 17 inch or 35 x 43 cm	8583619
CR Cassette / 10 x 12 inch or 25 x 30 cm	1914316
CR Cassette / 10 x 8 inch or 25 x 20 cm	1543826

***A Cassette Extraction Tool is required when using rigid cassettes.***  
If ordering rigid cassettes please make sure the customer already has at least (1) of this item. Extraction tool works on all cassette sizes.



**Cat. No.** 8423600





# CUSTOMER SUPPORT

FOR PRODUCTS, ACCESSORIES, PARTS AND SERVICE

**US & CANADA  
LATIN AMERICA**

Tel: 1-800-810-0327 (Option 4) M-F : 8am to 5:30pm EST  
Fax: 1-800-445-9967

**PARTS:** 1-866-927-1023      **SERVICE (24/7):** 1-800-328-2910  
M-F: 8am to 8:30pm US EST  
Sat: 8am to 4:30pm US EST

**EUROPE, AFRICA, MIDDLE EAST**

+39 01 02 450 000, [assistentzatecnica@carestream.com](mailto:assistentzatecnica@carestream.com)

**PLACE ORDERS ONLINE AT:**

[www.carestream.com/go/partner](http://www.carestream.com/go/partner)

# MORE PRODUCT AND TECHNICAL INFORMATION

[www.carestream.com](http://www.carestream.com)



[carestream.com](http://carestream.com)

© 2020 Carestream, Inc. Rochester, N.Y. 14608

# CarestreamNDT