

Papillons- Vlinders

An abstract artwork featuring a complex interplay of colors and textures. The composition is dominated by vibrant reds, ranging from deep, dark tones to bright, almost white highlights. These reds are set against a background of light blues and whites, which are themselves textured with fine, granular details. The overall effect is one of organic, almost cellular growth, with various shapes and patterns that suggest the intricate structure of butterfly wings or perhaps a microscopic view of a biological specimen. The lighting is dramatic, highlighting the three-dimensional quality of the materials used.

DANIELLE STABEL

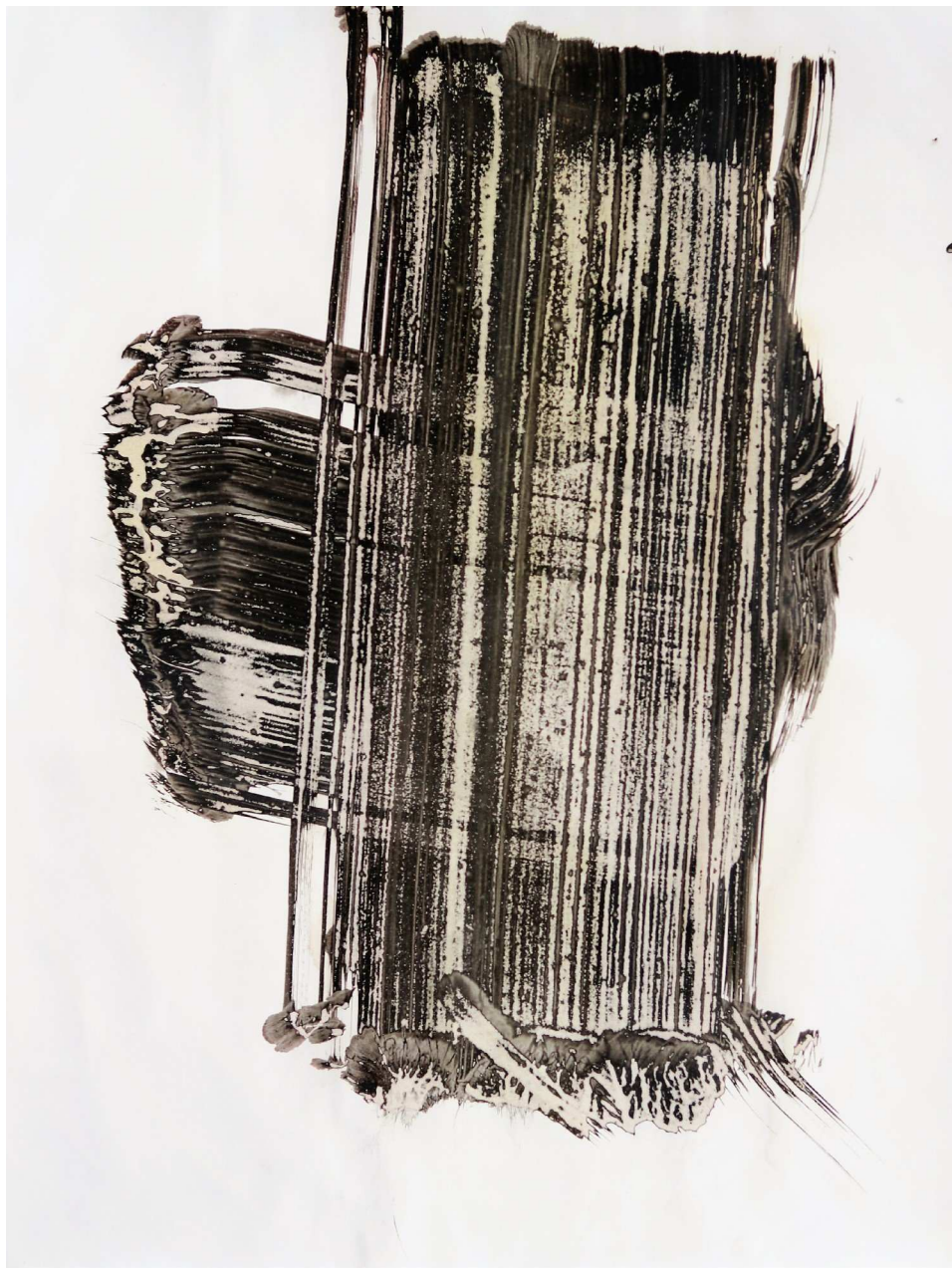
EXPOSITIE PULCHRI STUDIO, DEN HAAG : 28.7-18.8.2019
Weissenbruchzaal



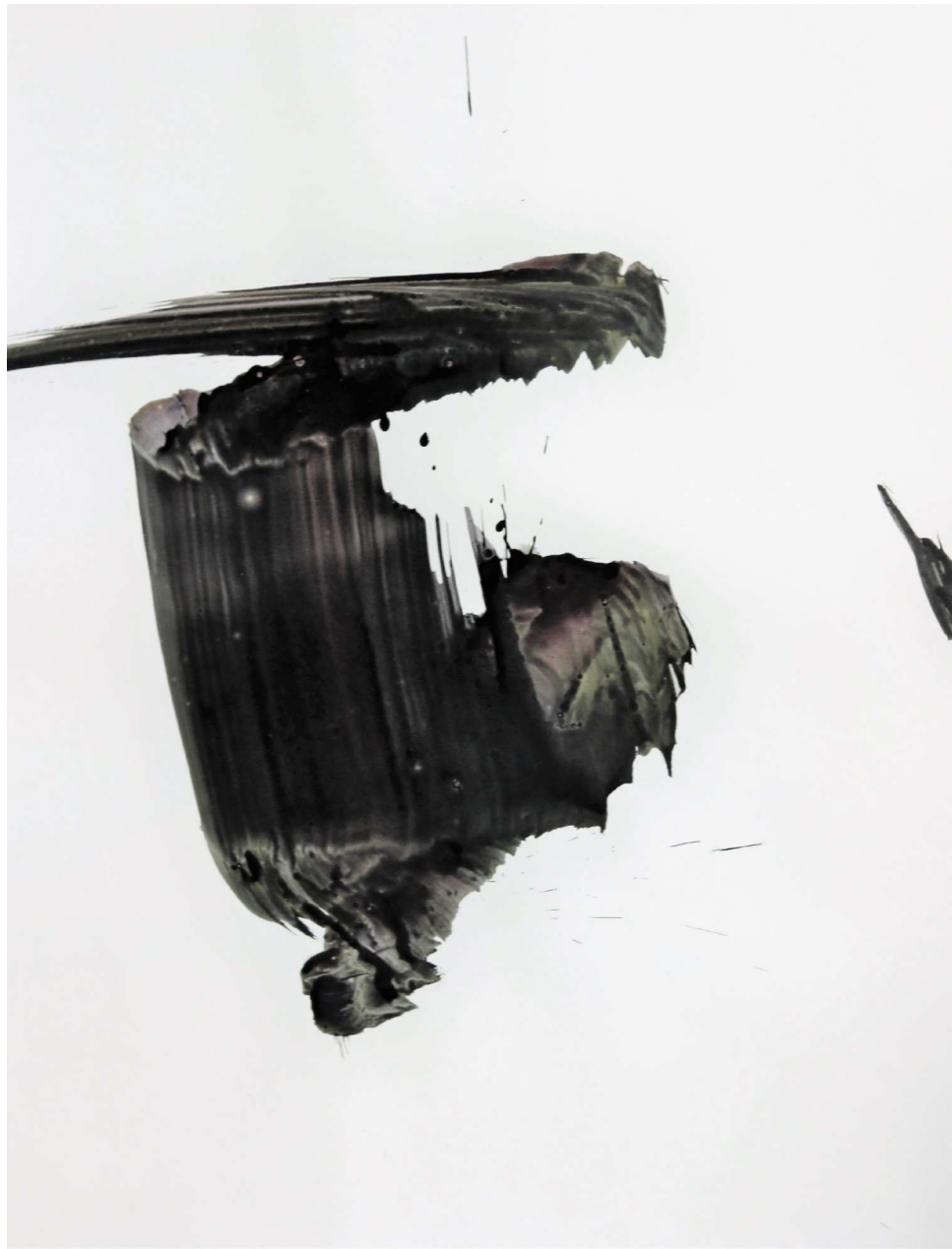
Envol, 2016
50cm x 65cm, Ink on paper



Aurore rouge, 2018
100cm x 70cm
Ink on stone paper



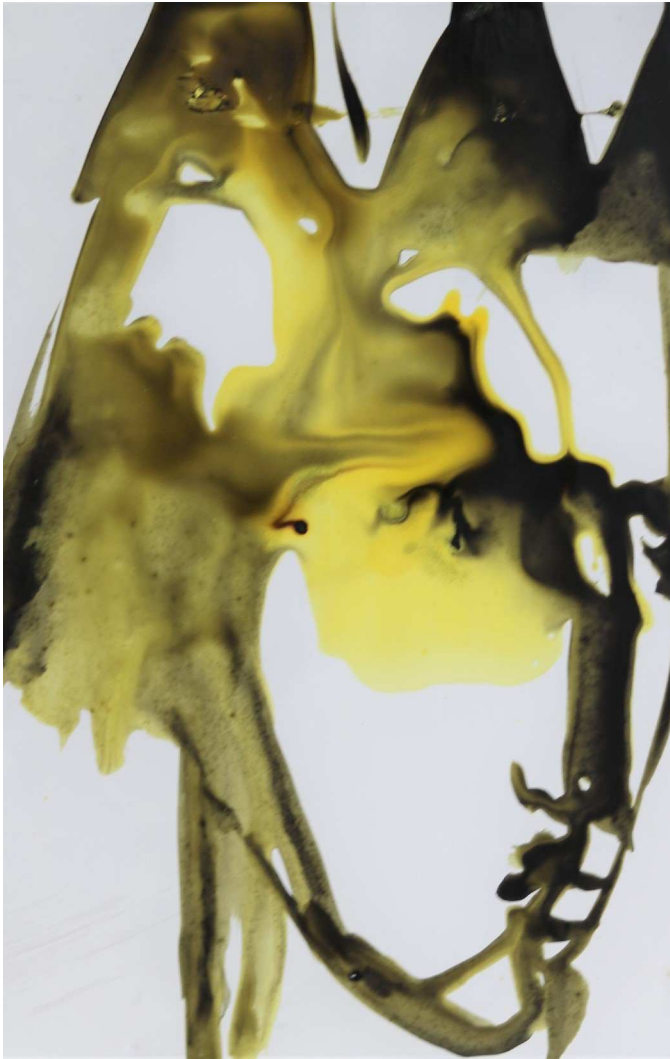
1, 2 gestes, 2016
50cm x 65cm, Ink on paper



Espace, 2016
50cm x 65cm, Ink on paper



Fragile, 2016
50cm x 65cm, Ink on paper



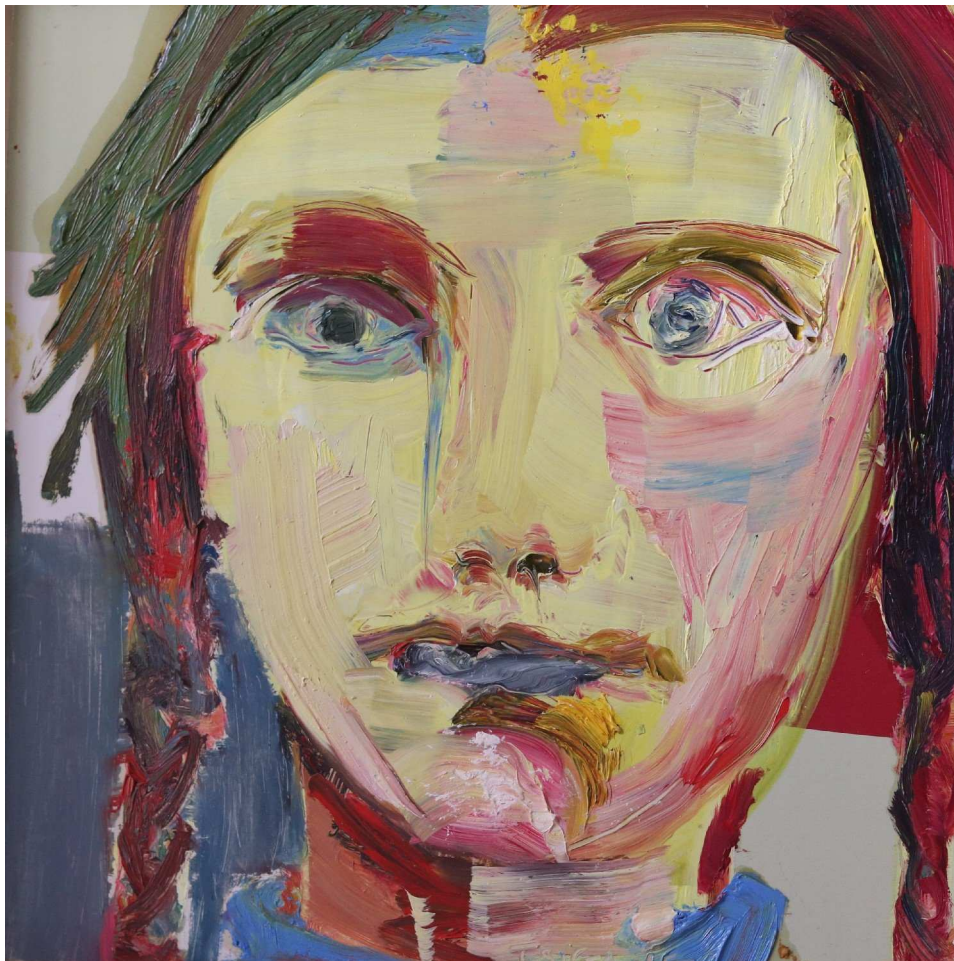
Le petit Prince, 2016
A4, Ink on stone paper



Berthold Brecht, 2019
A4, Ink on stone paper



Blue head, 2005
24cm x 34cm, oil on cardboard



Tzygane, 2003 (Atelier Wassenaar)
30cm x 30cm, oil on cardboard

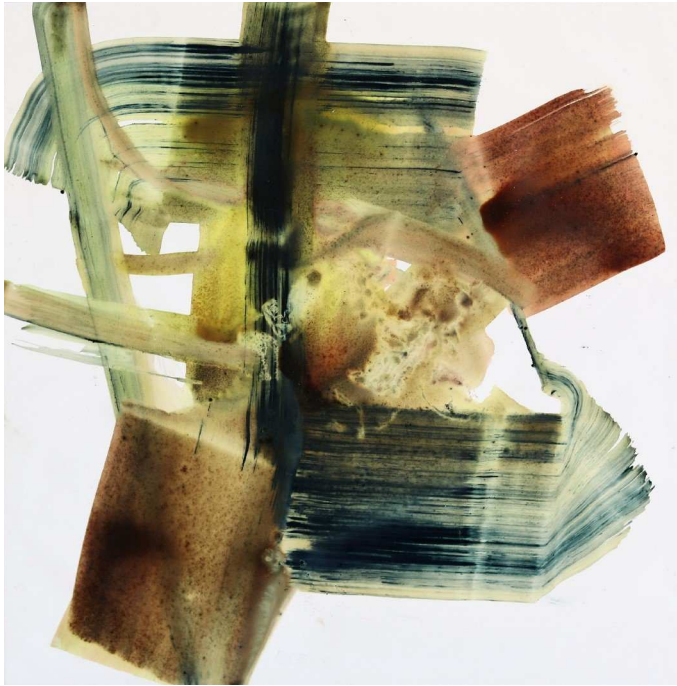


Feu-follet, 2017
30cm x 30cm, Ink on stone paper



**Classique, 2016
(inversion icone)**

**50cm x 70cm,
Ink on gold paper**



Flux, 2019
30cm x 30cm, Ink on stone paper



Dragon, 2017
30cm x 30cm, Ink on paper



Ciel, 2017
Bleu outremer - or - blanc
30cm x 30cm, Ink on stone paper



Ether, 2017
30cm x 30cm, Ink of stone paper



Flambloyant, 2016

**41cm x 60cm
Ink on stone paper**



**Open Window,
2017
30cm x 40cm
Ink on stone paper**



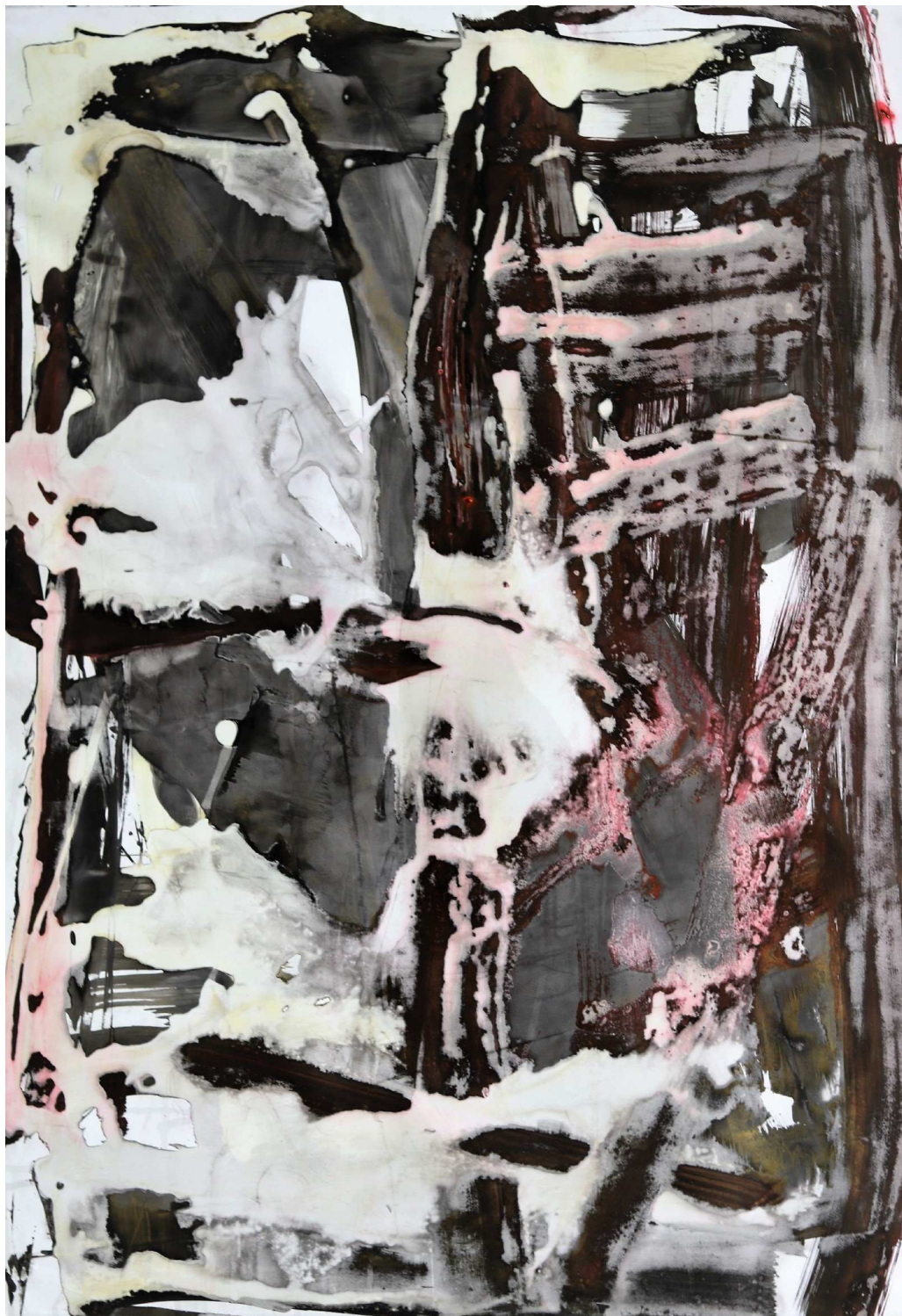
Ascension, 2019

**100cm x 70cm, Ink on
stone paper**

Colombe, 2016

**50cm x 70cm,
Ink on goldpaper**



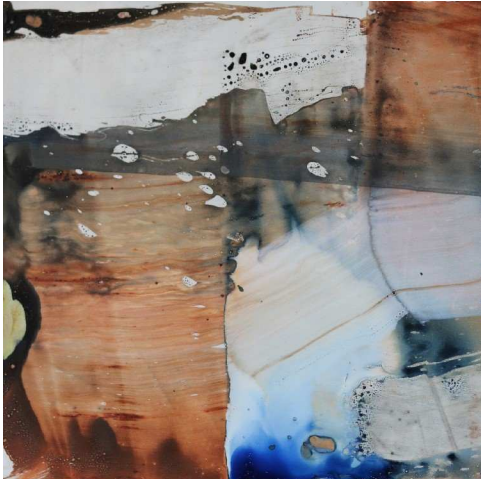


Rosée 2018

**70cm x 100cm,
Ink on Stone paper**



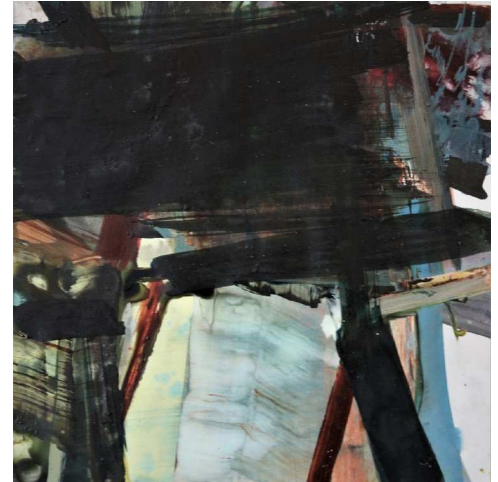
It's a play, 2018
35cm x 50cm, Ink on stone paper



Bleuet, 2019
20cm x 20cm, Ink on stone paper



Marine, 2019
20cm x 20cm, Ink on stone paper



Entrelacs, 2019
20cm x 20cm, Ink on stone paper



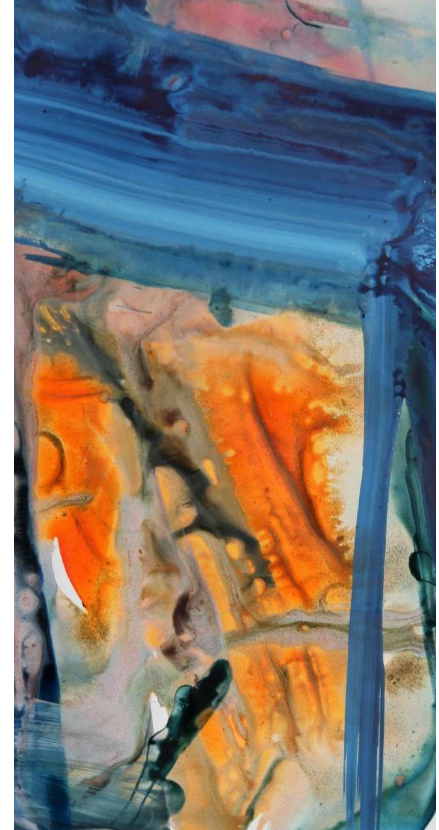
Etendue/ Black-white, 2019
70cm x 100cm, Ink on stone paper



Clair/obscur, 2018
18cm x 29cm
Ink on stone paper



Jaune poussin, 2017
18cm x 29cm,
ink on stone paper

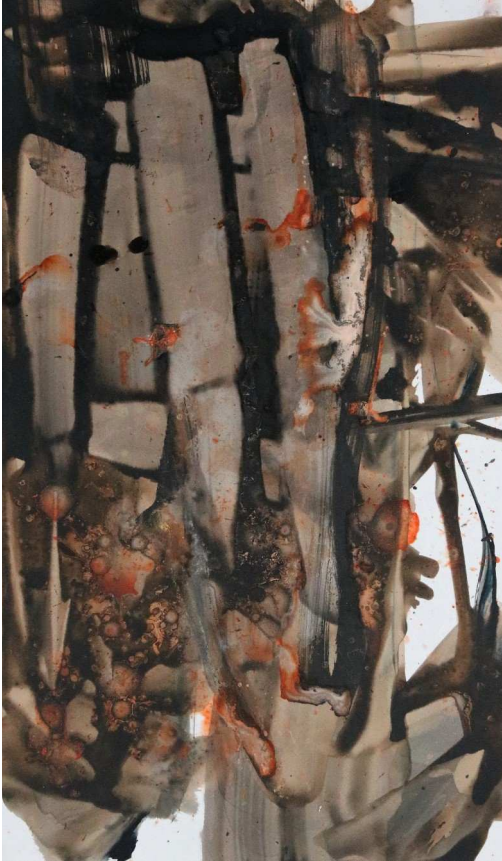


Fenêtre, 2017
18cm x 29cm,
ink on stone paper

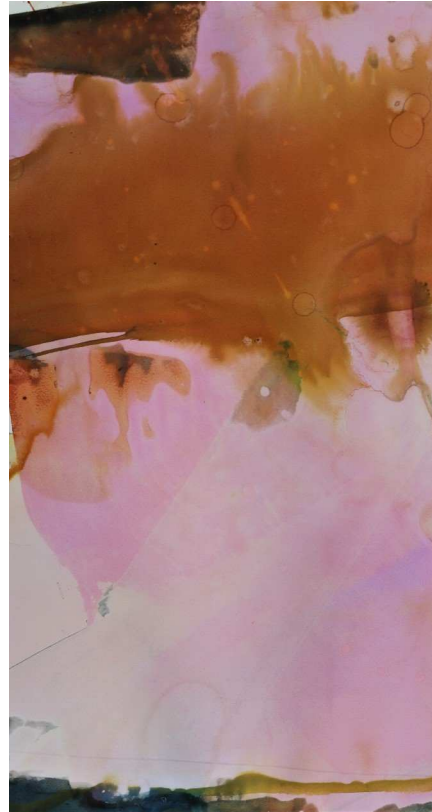


Light, 2018

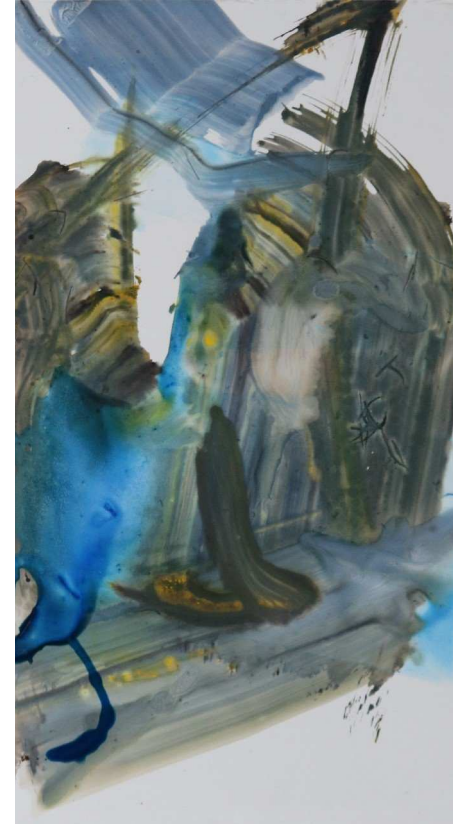
**35cm x51cm,
Ink on stone paper**



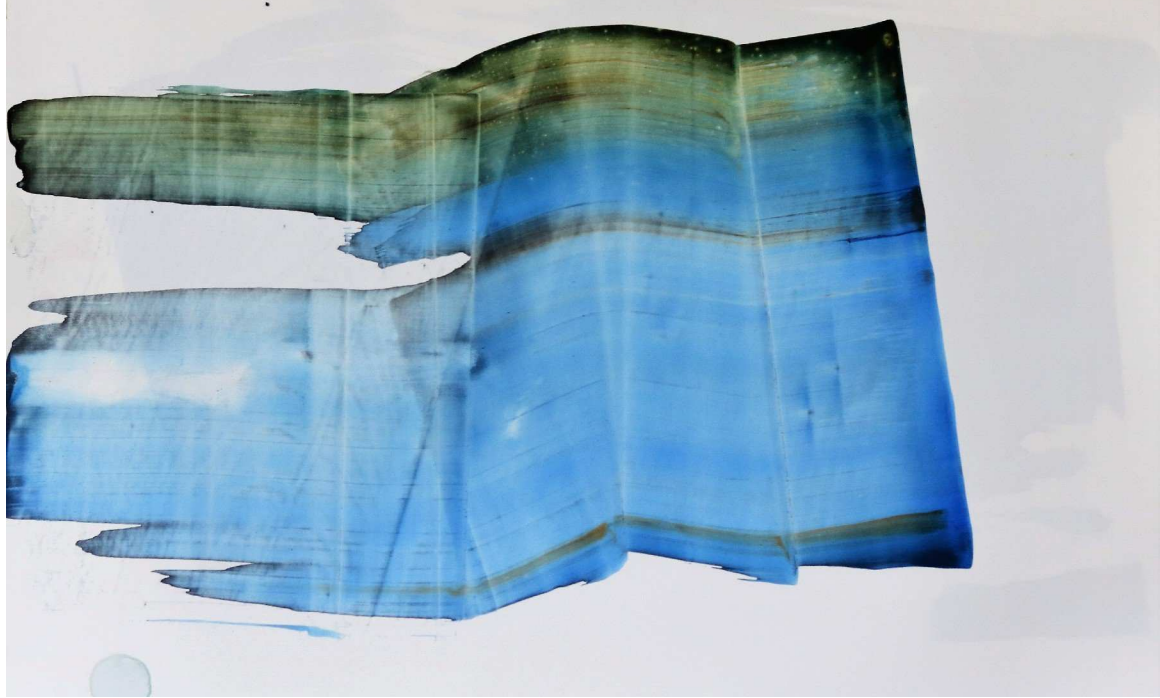
Between orange,2018
25cmx 35cm
Ink on stone paper



Rouille, 2016
18cm x 29cm,
Ink on stone paper



Tornade,2016
18cm x 29cm
Ink on stone paper



Infini, 2019
40cm x30cm, Ink on paper



Reminiscence Nolde, 2017
30cm x 20cm, Ink on stone paper

Content

P1	Envol, 2016
P2	Aurore rouge, 2018
P3	1,2 gestes, 2016
P4	Espace, 2016
P5	Fragile, 2016
P6	Le petit prince, 2016
P7	Bertold Brecht, 2019
P8	Blue head, 2005
P9	Tzygane, 2003
P10	Feu-follet, 2017
P11	Classique, 2016
P12	Flux / Dragon, 2019// 2017
P13	Flamboyant, 2017
P14	Open window, 2017
P15	Ascension (Black & white), 2019
P16	Colombe, 2016
P17	Rosée, 2018
P18	It's a play, 2018
P19	Bleuet / Marine / Entrelacs, 2019
P20	Etendue, 2019
P21	Clair-obscur / jaune poussin / Fenêtre, 2017-18
P22	Light, 2018
P23	Between orange / Rouille / Tornade, 2016-18
P24	Infini, 2019
p25	Reminiscence Nolde, 2017

**www.danielle-stabel.com
www.galeriesynthese.be
www.pulchri.nl**

"Voor de kunst moet er een duidelijke keuze gemaakt worden. Creatie betekent een dagelijkse tegenoverstelling met creatieve mogelijkheden. Daaruit moet ik kiezen, afhankelijk van de energie die me in dit ogenblik ter beschikking staat. Ik voel een innerlijk impuls om ruimte, kleuren of tonen vorm te geven: het spiegelbeeld van het moment, de metamorfose van het leven. Een lichtschijsel, de schaduw van een wolk, een bries...

De expositie in de Weissenbruchzaal zal verschillende types werken laten zien: ten eerste hoofden, geschildert in olie op doek, papier of hout. Daarnaast zijn er kwadraten . Ten slotte verwezelijk ik gebaren in mijn meest recente werken. Hier is de beweging essentieel. Inademen en uitademen zijn allegorieen voor de dynamiek in deze inktwerken, zwart en wit of kleuren met minimale contrasten of monochrome. Momentopnamen"