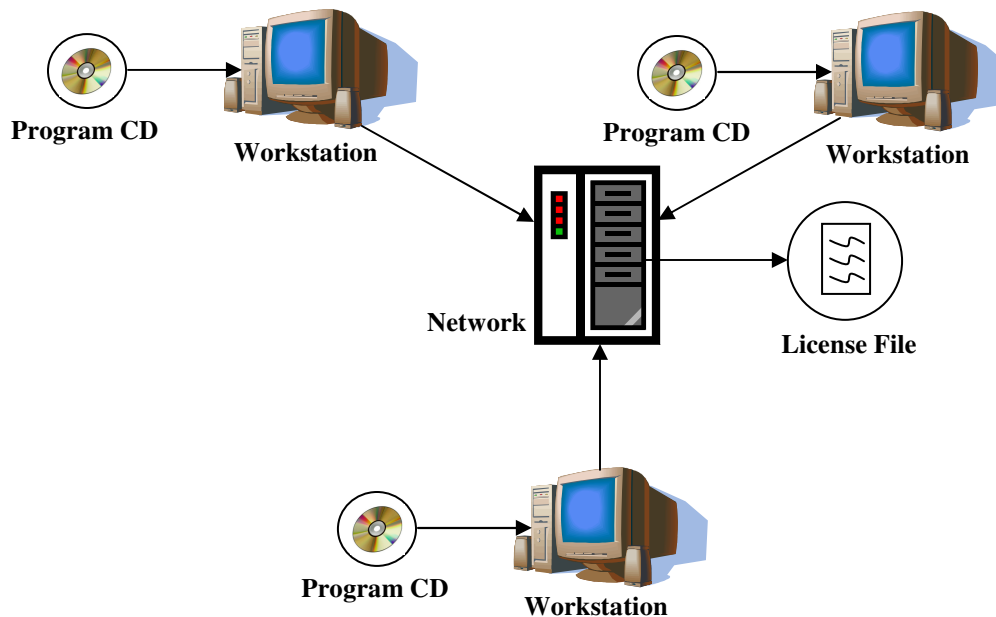


## Setting up Network Licensing for Visual Hydraulics

These directions will provide a detailed description of how to set up and run the network license version of Visual Hydraulics. A network license works by allowing a certain number of people to run the same program at the same time, over a network. There are a variety of ways to set up a network license. Innovative Hydraulics' method was selected because it works in the simplest fashion and does not affect the speed at which the program will run.

The network version works in the following way:



The network version is shipped on a single installation CD. On this CD are two items: the Visual Hydraulics setup program (Visual\_hydraulics\_setup.exe) and the license file for the network (VHlicense.dat). Note that your system administrator should install the program on the individual computers and the license file on the network per the steps below.

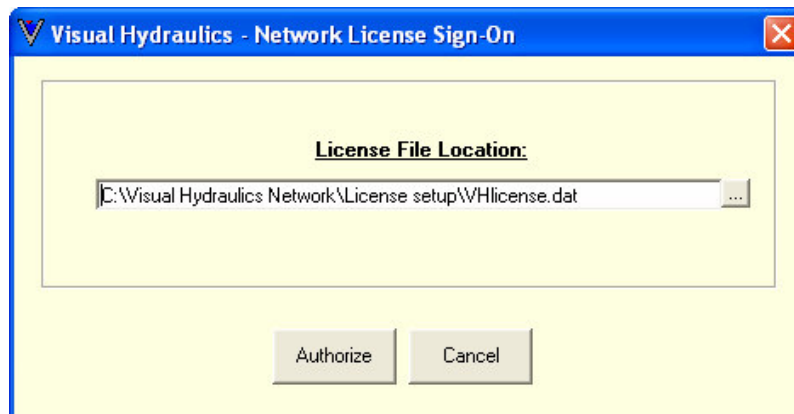
**Step 1:** From the installation CD you receive, copy the license file (VHlicense.dat) to a folder on your network. This will be a folder of your choice, but note that anyone running the Visual Hydraulics software must have access to the folder that the license file is stored in on the network.

**Step 2:** Install copies of the Visual Hydraulics software on individual computers that will be running the software and have access to the network where the license file has been stored. To do this, simply open the file titled "Visual\_hydraulics\_setup.exe" from the installation CD, and follow the setup directions. Note that the software itself does not have to be installed on the network! Use the software key that is provided with your copy of the CD when prompted for the key during setup for all installations. In the example above, three workstations will have Visual

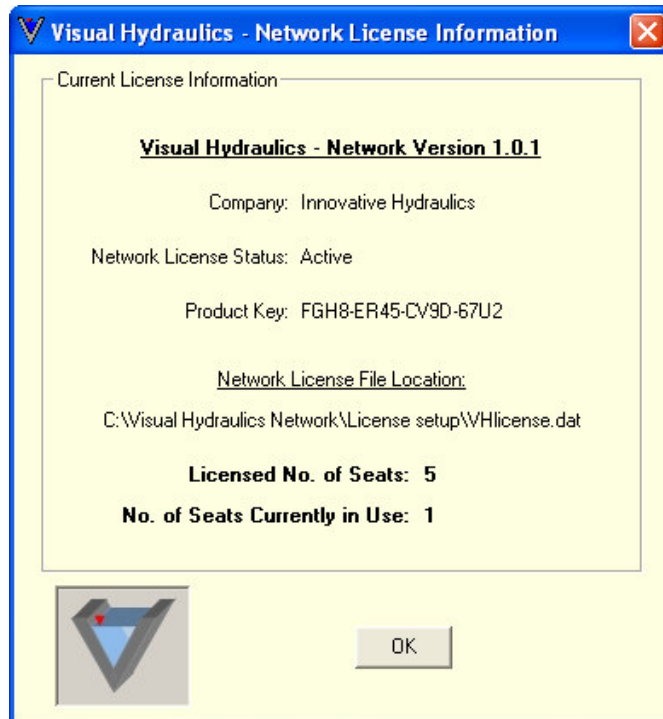
Hydraulics installed. Therefore the software itself must be installed on each workstation. The license file is stored in a location on the server as determined by your system administrator.

**Step 3:** Once the license file has been installed in a folder on the server and the software has been installed on the individual workstations, you are ready to use the software. The software works in the following way:

Run Visual Hydraulics from a workstation. You will be greeted with a network license sign-on form similar to the one below. You have to specify the location of the license file (only the first time, after that it will automatically be displayed in the supplied box), and then click the “Authorize” button to sign-on. The program then finds the license file specified in the box below, opens that file, and checks to see how many people are signed on, and compares this with how many people are permitted by the license to be using the software. If there are seats available, the license file will be updated and that person will be allowed to use the software. If all available seats are taken, a message will be displayed stating that all available seats are being used and therefore that person must sign on at another time when seats are available.



If there are seats available and you have successfully logged onto the network, Visual Hydraulics will display for you a form showing you the number of seats that have been licensed to you as well as the number of people currently logged on (not including you):



This form lists the license file that has been installed on the server and displays the location of that file, how many seats were purchased with this license (in this case 5), and how many people are currently using the software (in this case 1). This means someone else is currently logged on, and you would be the second person logged on. If three more people logged on, it would update to indicate that five people were currently using the software, and no one else could use the software until one of the five individuals already logged into the program quit using the program.