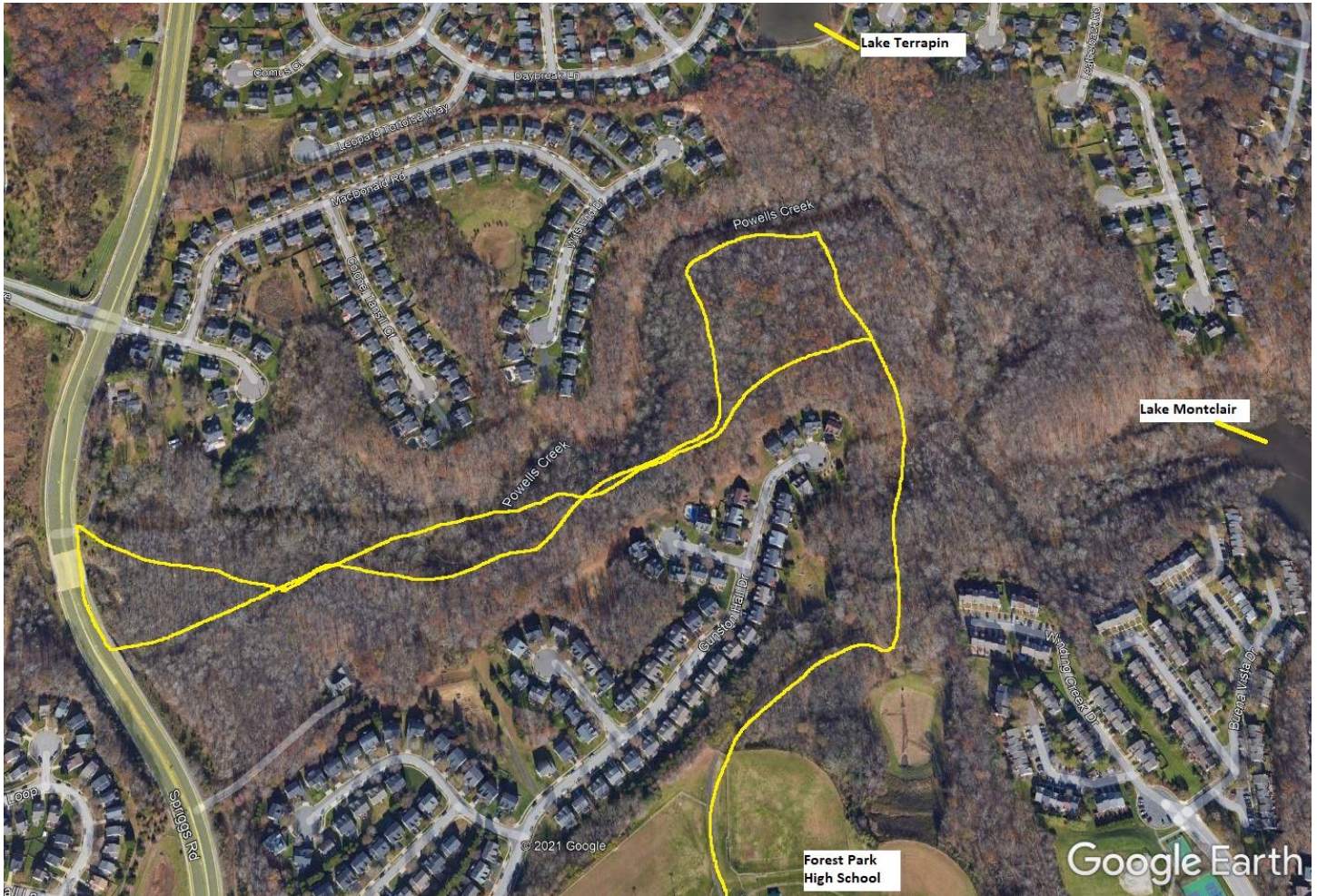


Test the Trails Site Report Powell's Creek Spriggs Road to Forest Park High School

Site Visit Date: December 19, 2021

Explored by: Neil Nelson, John von Reyn, Brad Nance, Jessie Thompson, Joe Marshall, and one other

Area Explored: from Forest Park High School, explored the PWC park land in the Powell's Creek stream corridor, between Spriggs Road and Lake Montclair.



Land Ownership: Prince William County, Ashland Conservancy, Southlake Cove Townhomes Association, Gale L. McGregor



Prince William County Magisterial District: Potomac

Report:

From the parking lot of Forest Park High School, we hiked down the blacktop path on the school grounds that serves as an access road for a large storm water facility. From there we entered the wooded area, hiked to Powell's Creek, and found an open utility corridor which meets the stream. We followed the utility corridor in the upstream direction for about $\frac{1}{4}$ mile, then exited the utility corridor to continue following the stream channel upstream toward Spriggs Road.

The stream channel meanders through the woods; in some sections it is a wide flat flood plain, in other areas there are steep hillsides with rock outcroppings, and a rocky stream channel. We were able to closely follow the stream through some areas; in other areas the steep hillsides bordering the stream meant that we had to find a walkable route on higher ground away from the channel.

We walked upstream to Spriggs Road and checked out the underpass where the stream flows under the road. We found a beaver dam in the underpass, directly beneath Spriggs Road. [There was evidence of recent beaver activity (chewed branch ends and stumps, wood chips) at several points along the stream]. The stream channel through the underpass is bordered by large riprap, currently not suitable to hike over.

We climbed the bank from the stream up to Spriggs Road, crossed the bridge on the blacktop path, walked back down to the stream and started the return trip on the other side of the stream. We encountered an ATV track that ended near the stream, but we didn't follow it to see where it originated. We found a spot to cross the stream, climbed back up to higher ground and continued toward the intersection with the utility corridor. We found a short section of trail that appears to have been constructed for mountain biking, with some features (small mounds for roller coaster effect) and a small bridge. We continued the return trip on the utility corridor, and through the wooded section leading back to the school grounds.

Greater Prince William Trails Coalition Aspirational Trails Map:



Benefit of this section: Continuation of Powell's Creek Greenway Trail east of Spriggs Road and connection to Forest Park High School.

Estimated Costs:

Land or right-of-way acquisition: A short section of the route from Forest Park High School to the PWC park land would cross a parcel owned by the Ashland Conservancy. An alternate route would cross a parcel owned by Southlake Cove Townhomes Association. One parcel next to Spriggs Road is privately owned.

Engineering: consideration required for locating an easy-to-maintain trail on that would climb up to higher ground and then back down; one bridge needed for a trail route that uses both sides of the stream, or an improved fair weather crossing.

Construction: _____ (including \$____/foot for natural surface trail and \$____ for ____ bridges/fords)

Annual maintenance: _____

Pictures:















The picture below shows the opening in the fence beside the service road for the storm water facility, at Forest Park HS. This opening is the only place for pedestrians to get through the chain link fence, which runs across the entire back of the school (parking lots, driver's education course, stadium and other athletic fields), and along the side with the storm water facility.

