

IndependentSocialWork.com



Training Courses

We can provide a range of Independent Social Workers (ISW) who are highly qualified in their respective field of social work. They are qualified social workers with full CV, SWC Registration and Criminal Records Check, along with professional indemnity insurance.

Independent Social Work is a consultancy service specialising in all aspects of adult social care assessments, mental health, learning disability, Profound & Multiple Learning Disability, Autism and specialist Forensic Social Work services. We are able to provide consultation on all matters relating to the care and treatment of vulnerable adults, from direct clinical practice through to business redevelopment. We draw upon many years of experience, ranging from direct practice in social work, through to lecturing on University programmes. Our philosophy is grounded in the ethics and values of professional social work and our commitment to the empowerment of all individuals and respecting difference. We strive to empower, promote and protect the needs and interests of vulnerable people through our commitment to the highest possible standards of care.

Our associates are highly specialised, expert practitioners from the social work profession and offer a high calibre of skills and practice. We use research, evidence based practice and policy to inform and underpin all services that we deliver.

Ultimately we strive to achieve the best possible outcomes for the purchasers of our services.

Our clients include:

- Local Authority – Learning & Development Services
- Voluntary and Private Sectors
- National Health Service
- Mental Health Law Firms
- Residential, Nursing and Supported Living Services
- Domiciliary Recruitment Care Agencies
- Private Individuals

Our services include:

We deliver a range of services, from specialised consultations through to direct social work practice. We work with a number of consultants and independent social workers who are able to offer interventions for a vast range of service user needs:

Service User Groups:

- Adult Mental Health
- Learning Disabilities
- Autism & Asperger Syndrome
- Secure and Complex (Forensic)
- Those detained under the MHA 1983 (Training for AMHPs)
- Capacity & Best Interest Assessments (BIA)
- Substance Misuse, Addictions and Dual Diagnosis
- Youth Justice
- Fostering and adoption
- Profound & Multiple Learning Disability (PMLD)

Service Provision:

- First Tier Tribunal (Mental Health Act)
- Capacity & Best Interests
- Assessments and Independent Reports
- NHS and Community Care Act 1990 Assessments
- NHS Continuing Healthcare Assessments
- Residential Care Assessments & Reviews
- Supported Living

Specialist Consultancy Services

- Business and training needs analysis
- Project management and development including Policy and Audit Development (Bespoke Service)
- Adult safeguarding consultation and investigation
- Service user advocacy and representation
- Coaching and Mentoring in the workplace


In partnership with its sister organisation

www.learningdisability.co.uk we can offer consultancy services providing high quality expert social workers to the public and statutory sectors.

About Us

We aim to provide information, education, resources, advocacy and services to those working with older adults, adults with a learning disabilities, children and adults with Autism, and those with Secure and Complex needs (Forensic).

As an organisation we are fully committed to the social inclusion of all people with a learning disability into mainstream society. This can be achieved through the wider education and training of all communities in understanding learning disabilities, it's impact upon the individual, the family and equality of life.



Our mission
Respecting Difference &
Promoting Equality

Course 1: Introduction to working with Part III of the Mental Health Act 1983

Who is this course for?

This is a preparation course for Social Workers, Nurses and Doctors preparing to work Mentally Disordered Offenders, including those persons with learning disability subject to other Part III sections, such as prison transfers. This course would in the main be for those working with Part III patients and including those with a Forensic Mental Health, and or a Learning Disability or Autism.

Programme

- Part III MHA 1983 Criminal Matters, MHA Code of Practice and MHA Reference Guide & Learning Disability Exclusion
- Part III MHA 1983 Sections, 37, 38, 41, 42, 45a, 47 & 49 in practice/Role of Courts
- Role of the Ministry of Justice and Supervision of Part III Patients
- Question and answer session



Learning Outcomes

- This course will provide delegates with an understanding of Part III Patients involved in Criminal Proceedings.
- Delegates can expect to develop a better understanding of how Hospital Orders, Restriction Orders and Prison transfers are administered in practice.
- You will be able to understand the various sections of Part III of the Mental Health Act 1983 and how these impact upon people with a Forensic background, those with a learning disability/Autism, particularly practice considerations.
- You will be able to understand the Learning Disability Exclusions within the Mental Health Act 1983 and how this affects practice when being applied to Part III patients.
- You will be able to develop a better understanding of Part III MHA 1983 through current case law and case studies.
- Delegates will be able to understand the Role and Functions of the Ministry of Justice.

Course 2: Managing Conditionally Discharged Patients as Medical and Social Supervisors

Who is this course for?

This course is for Social Supervisors whether social worker or nurse providing supervision for Conditionally Discharged Patients under the Mental Health Act 1983. It offers a practice based approach with practical case studies and opportunities to learn from past and present Mental Health Inquiries. This course is also suitable for Medical supervisors and those preparing to be Supervisors.

Programme

- Who are Mentally Disordered Offenders (MDOs)?
- Role of the Ministry of Justice
- Role & responsibilities of the Social & Medical Supervisors
- New Guidelines for Social Supervisors – Ministry of Justice
- Lessons from the various Inquiries
- Case Studies and Good Practice



Learning Outcomes

- To understanding Conditional Discharge MHA 1983
- To understand the role of Social & Medical supervisor
- To be able to integrate the guidelines for social supervisor into practice
- To understand the role of the Ministry of Justice
- To understand when to make contact with the Ministry of Justice
- To understand the process of recall and recall warrants
- To understand the lessons learnt from the John Barrett Inquiry
- To understand the importance of multi-professional working



Course 3: Introduction to Risk Assessment for Social Supervisors and AMHPs

Programme

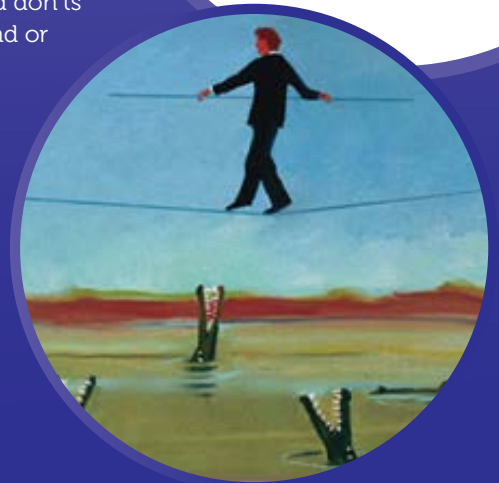
- What is risk?
- Definition of Risk
- Mental disorder & Mentally Disordered Offenders and risk
- Identifying risk? (Group work)
- Assessment of Risk
- Models of risk assessment CPA, HCR20 & DoH Guidelines
- Assessing Risk prior to, during and debriefing practice
- Prevention and management of risk/aggression
- Protecting self and others – Dos and don'ts
- Case studies – Social Supervision and or Mental Health Act Assessments

Learning Outcomes

- What is risk?
- Definition of Risk
- Mental disorder & Mentally Disordered Offenders and risk
- Identifying risk? (Group work)
- Assessment of Risk
- Models of risk assessment CPA, HCR20 & DoH Guidelines
- Assessing Risk prior to, during and debriefing practice
- Prevention and management of risk/aggression
- Protecting self and others – Dos and don'ts
- Case studies – Social Supervision and or Mental Health Act Assessments

Who is this course for?

This course is designed for Social Supervisors, AMHPs and those working towards their either becoming Social Supervisors or AMHP status. The course brings together the importance understanding risk assessment in the context of carrying out the duties of a Social Supervisor or AMHP.



Course 4: Introduction to Conditions Associated with Learning Disability

Programme

- What is a learning disability?
- Causes and prevalence of learning disabilities
- Law relating to people with learning disabilities
- Values and perceptions of people with a learning disability
- Personalisation
- Health Care - Syndromes associated with learning disabilities
- Learning Disability and mental illness
- Good practice and communication
- Case studies

Learning Outcomes

- To understand the values in relation to equality of opportunity for people with learning disabilities (Social Inclusion).
- To understand the causes of learning disability and numbers of people with learning disabilities.
- To provide a basic understanding of the law relating to adults with learning disabilities.
- To understand the healthcare needs of people with learning disabilities, and the associations with mental illness.
- Syndromes associated with learning disability: Down syndrome, Autism, Fragile X, Epilepsy and its relationship with mental illness etc.
- To enable participants to understand basic communication and assessment skills when working with adults with learning disabilities.
- Through case studies to develop an understanding by which to utilise other agencies when assessing people with learning disabilities.

Who is this course for?

This course is for Social Workers, Nurses and Doctors preparing to work with Mentally Disordered Offenders, including those persons with learning disability and or Autism subject to other Part III MHA 1983. This course looks at all the Sections of Part III MHA including Hospital Orders, Restricted Patients, the Courts, Prisons and Hospital transfers.

Course 5: Introduction to Learning Disability & Mental Illness

Who is this course for?

This course is for all care staff and those who want to enhance their understanding and knowledge of how mental illness impacts on the lives of adults with a learning disability. This course is also suitable for Social Workers, AMHPs & BIAs.

Programme

- Values and perceptions of people with combined learning disability & mental illness
- Prevalence, causes and diagnosis of mental illness in people with learning disabilities
- Syndromes – associated with mental illness (Autism & Asperger Syndrome)
- Learning Disability & MHA 1983
- Mental illnesses associated with learning disability
- Assessment of mental illness in people with a learning disability
- Good practice to effective assessment
- Case Studies

Learning Outcomes

- To understand the historical perceptions and values associated with the learning disabled (Social Inclusion).
- To understand the causes and prevalence of mental illness in people with a learning disability.
- To understand the process of assessment under the MHA 1983
- To understand the relationship between mental illness and syndromes, such as Down syndrome and Autistic Spectrum Disorders.
- To identify the main types of mental illness associated with a learning disability.
- To enhance communication skills when assessing people with a combined mental health need and learning disability.
- To enable participants through case study work to enhance their competence in assessing mental health problems in people with learning disabilities.
- To give an understanding of where to access services for those people with a combined learning disability and mental health problems.

Course 6: Introduction to Autism, Asperger Syndrome

Who is this course for?

This course is specifically designed to enable care practitioners, whether community nurses, social workers, care staff and support staff to understand the condition of Autism & Asperger Syndrome. The course covers general awareness, the differences between the two conditions; Autism & Mental Illness and improves the practitioners competence when assessing those whom are or have been detained under the MHA 1983.

Programme

- What is Autism (ASC) & Asperger Syndrome (AS). Prevalence, causes of ASC, and the triad of differences.
- Autism & Mental illness
- Asperger syndrome - Inner Space
Autism/Aspergers inner space - Sensory Overload
Assessment under the MHA & Case Studies
Resources & reflection of good practice

Learning Outcomes

- An overview of Autism & Asperger Syndrome
- To provide participants with an understanding of diagnosis, prevalence & causes
- To enable participants to understand the main mental health needs associated with Autism
- To enable participants to understand the connections between Autism & schizophrenia, including anxiety conditions, depression, OCD, ADD etc.
- To enable participants to understand the impact of sensory issues in Autism and mental health
- To provide case studies in order to develop and promote good practice in identifying mental illness in those with Autism



Course 7: Introduction to Conditions Associated with Learning Disability

Programme

- What is a learning disability?
- What is a syndrome or condition?
- Down Syndrome the facts
- Autism & Asperger Syndrome
- Fragile X

Learning Outcomes

- Participants will learn about learning disability and understand its association with certain conditions/syndromes
- To provide an overview of causes and numbers of each condition/syndrome
- To enable participants to understand how Chromosomal and Autosomal genetics impact upon Down Syndrome, Autism & Fragile X
- To enable participants to understand the impact of conditions on communication
- To explore various associated conditions such as Down Syndrome, Autism, Fragile X with learning disability – the impact upon the individual and family
- Through case studies explore how these conditions affect individuals and the service they receive.

Who is this course for?

This course is for staff wanting to expand their knowledge and understanding of syndromes associated with learning disability and the impact upon the individual's daily living.



Course 8: Assessment of Learning Disability under Mental Health Act 1983

Programme

- Roles & responsibilities of AMHP when assessing people with a learning disability
- Part II & III MHA 1983, Code of Practice and People with a Learning Disability
- Causes, prevalence, and diagnosis of mental illness in people with learning disabilities
- Learning Disability, health and association with mental health
- Chromosomal disorders associated with learning disability/mental health, Autistic Spectrum Disorders Down syndrome & Prader Willie Syndrome
- Explore abnormally aggressive behaviour and irresponsible conduct.
- Best practice – developing basic communication skills

Learning Outcomes

- To enable participants to develop skills and best practice when assessing people with learning disabilities under the Mental Health Act 1983 & MHA Code of Practice.
- To enable participants to identify and understand how mental illness impacts on the lives of people with learning disabilities.
- Utilising existing AMHP skills in the assessment process.
- To enable participants to understand the various types of mental illness and how these are associated with chromosomal disorders and other syndromes.
- To explore the interface with MHA and MCA in relation to those with a learning disability.
- To enable course participants to develop the necessary skills to interview a person with learning disabilities, taking into account issues of communication, degree of learning disability and /or associated syndromes.
- To update participant's knowledge and understanding on recent changes to Mental Health Law.
- To provide course participants with the skills by which to utilise other agencies when assessing people with learning disabilities.

Who is this course for?

This course is predominately for Approved Mental Health Professionals (AMHP) assessing people with a learning disability, covering the MH Act and learning disability. The course provides participants with the knowledge and skills to carry out more accurate assessments. The course explores the impact of various syndromes associated with learning disability, including the relationship with mental illness. The course provides good practice guidelines along with how to improve communication during assessments.

Course 9: Assessment of Autism under the MHA 1983

Who is this course for?

This course is specifically designed to enable care practitioners, whether AMHP's, community nurses, and social workers to understand the condition of Autism & Asperger Syndrome. The course covers general awareness, the differences between the two conditions; Autism & Mental Illness and improves the practitioners communication skills, thereby developing their skills when assessing those whom are or have been detained under the MHA 1983.

Programme

- Autism & Mental illness
- Asperger syndrome - Inner Space
- Autism/Aspergers inner space - Sensory Overload
- Assessment under the MHA & Case Studies
- Resources & reflection of good practice



Learning Outcomes

- To provide a general awareness of Autism, including the triad of differences.
- To enable participants to understand the causes and prevalence of Autism & Asperger syndrome, including associated mental illnesses
- To enable participants to understand inner space an insight into the inner world of Autism/ Asperger Syndrome
- To enable participants to understand issues relation to communication and sensory overload when assessing and working with people with Autism & Asperger Syndrome
- To enable participants to improve their assessment skills for those being assessed under the MHA 1983
- To provide case studies to enable practitioner to apply good practice when assessing individuals with Autistic Condition

Other courses available



Courses for social workers, nurses, AMHPs, BIAs, care and support workers in the Health & Social Care Sectors.

We also provide bespoke training packages

Courses:

- **Introduction to Mental Illness**
- **Basic Awareness Course Mental Health Act 1983**
- **Basic and Advanced Courses Mental capacity Act 2005**
- **Understanding Deprivation of Liberty Safeguards (DoLS) (Liberty Protection Safeguards LPS)**
- **Understanding and working with those who use Substances**
- **Down syndrome the facts**
- **Autism Awareness Training for Parents**
- **Introduction to Personality Disorders**
- **Introduction to syndromes associated with learning disability**
- **Introduction to Mental Capacity Act 2005**
- **Introduction to DoLS**

Specialist Courses:

- **Introduction to the Mental Health Act 1983 Parts I, II & III**
- **Introduction to good practice and First Tier Tribunals**
- **Risk assessment for AMHPs and Social Supervisors**
- **Conditional Discharge & Role of Social Supervisor**



Our mission

Respecting Difference &
Promoting Equality



IndependentSocialWork.com

Independent Social Work service is based in the West Midlands and we do offer our services nationwide. If you are interested in training events, need consultancy services or would like to promote your organisation on our web site then please contact us at info@independentsocialwork.com

www.independentsocialwork.com or www.learningdisability.co.uk