

Introduction & Range



35 years of international expertise
in **the main fields** of automation





Since 1984, **pneumatic solutions**
for a range of different industries
in over **60 markets worldwide**



PACKAGING
& LOGISTICS



FOOD &
BEVERAGE



BIOMEDICAL
& PHARMA



PROCESS
INDUSTRIES



WOOD, GLASS
& ABRASIVES



VACUUM &
MANIPULATION



AUTOMOTIVE
& TRUCKS



RAILWAYS
& RIDES



TEXTILE &
PRINTING



WELDING &
SIDERURGICAL



ALWAYS COMMITTED
TO QUALITY

UNI EN ISO 9001
compliant since 1996.
Complete control over
the production process,
100% of products tested.



MADE IN ITALY

A close-up photograph of a robotic arm with a black gripper holding a large, silver-colored metal flange. The flange has a central circular hole and several smaller holes around its perimeter. The background is blurred, showing a factory setting with other machinery and a red object.

THE RANGE

ACTUATORS

Cylinders & grippers

page 6



VALVES

Valves & solenoid valves

page 16



FRL UNITS [VIDEO INTRODUCTION](#)

Air treatment & pressure regulation

page 25



FITTINGS

Fittings & flow control

page 30



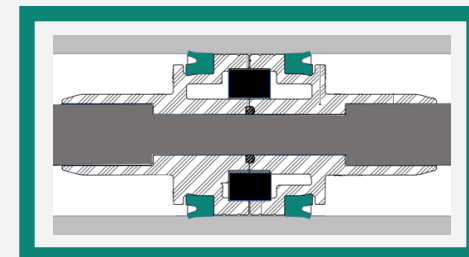


ACTUATORS

19 million cylinders produced since 1984



Long and solid **bush/guiding systems**
Lapped/rolled **stainless steel rods**
Polyurethane (PUR) **lip seals**





ACTUATORS

RANGE MAP

ISO standard
pneumatic cylinders



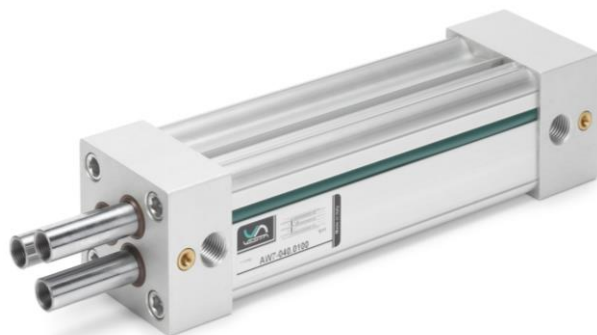
Actuators with
special functions



Pneumatic cylinders
for **harsh environments**



Guided & antirotation
pneumatic cylinders



Pneumatic **grippers**



ISO STANDARD CYLINDERS



DVM/ACM (T)

ø12, 16, 20, 25 (32, 40, 50)

ISO 6432 round magnetic cylinders



NWT

ø32, 40, 50, 63, 80, 100, 125

ISO 15552 cushioned magnetic cylinders






NSK I/U

ø16, 20, 25, 32, 40, 50, 63, 80, 100

ISO 21287/UNITOP compact cylinders

ISO CYLINDERS CONVERSION CHART

	VESTA	FESTO	SMC	PARKER	NORGREN	ASCO/NUMATICS
 ISO 6432	DVM ACM	DSNU (double act.) ESNU (single act.)	C85	P1A	RM8000	Series 435
 ISO 15552	NWT	DSBG DSBC DSBF	CP95 CP96	P1D (discontinued) P1F	PRA802000	Series 450 Series 453
 ISO 21287	NSK	ADN (double act.) AEN (single act.)	C55	P1P	RA192000	Series 499

BIG-SIZE STANDARD CYLINDERS



XJN

ø160, 200, 250, 320

ISO 15552 cushioned magnetic cylinders



SHDM

ø125, 160, 200

Compact big-size cylinders

CYLINDERS FOR HARSH ENVIRONMENTS



XPB/XJS/DSA

ø32, 40, 50, 63, 80, 100

ISO 1552/6432 cylinders in FDA-compliant polymer



XJSS/DSM

ø32, 40, 50, 63, 80, 100

ISO 1552/6432 AISI304/316 stainless steel cylinders



RSSC

ø32, 40, 50, 63

Stainless steel cylinders for the food industry

ANTIROTATION GUIDED CYLINDERS



GLC/GLH

ø20, 25, 32, 40, 50, 63, 80, 100

ISO 15552/6432 compliant linear control units



HNG

ø16, 20, 25, 32, 40, 50, 63

Compact guide cylinders



PS/HPSK

ø16, 20, 25, 32

Pneumatic dual-rod slides



NCV63

ø63

Flat pneumatic cylinders

MULTI-ROD CYLINDERS



AR/AW2-3-4

ø25, 32, 40, 50, 63, 80, 100

Cylinders with twin rods



AW6-8

ø32, 40, 50, 63

Cylinders with triple rods



AW1-5-7

ø32, 40, 50, 63

Cylinders with holed telescopic rods

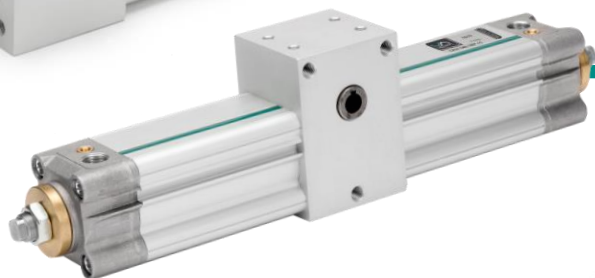
SPECIAL FUNCTION CYLINDERS



RW/DC

ø32, 40, 50, 63, 80, 100

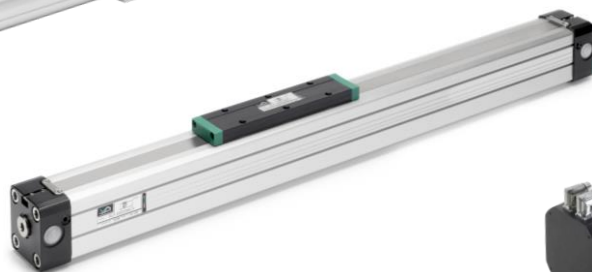
Cylinders with piston rod brake device



CRW

ø25, 32, 40, 50, 63, 80, 100

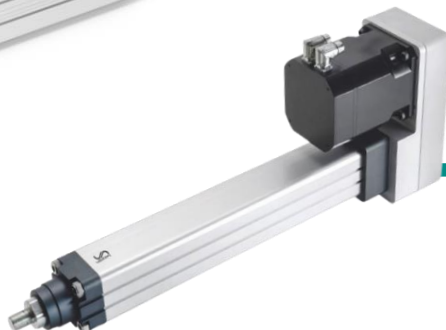
Rotary actuators (male/female, 90°/180°/360°)



RLF/TM

ø16, 20, 25, 32, 40, 50, 63

Rodless cylinders (band and magnetic)



ESNL

ø32, 40, 50, 63, 80, 100

Electrical actuated cylinders (linear/parallel)

PNEUMATIC GRIPPERS



NGA

ø12, 16, 20, 25, 32

Angular 30° grippers (single/double acting)



NGP

ø10, 16, 20, 25

Parallel grippers (single/double acting)



NGT

ø12, 16, 20, 25

180° grippers



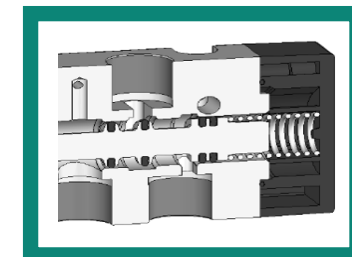


VALVES

23.5 million valves produced since 1984



Niploy treatment for performance & durability
Optimized dimensions for high-flow
High-resistance NBR seals





VALVES

RANGE MAP

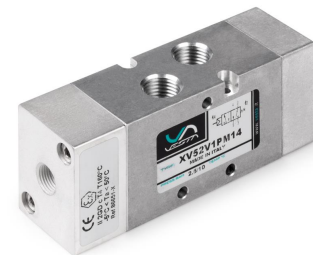
3/2, 5/2, 5/3 valves
& **solenoid valves**



Mechanical & manual valves



ATEX valves & solenoid valves



Multipole connection
and manifolds

NEW



NAMUR valves
and **ISO valves**



Direct acting
3/2 valves



High-flow
3/2 valves



VALVES AND SOLENOID VALVES



E VALVE (since 1989)

22mm coil - G1/8", 1/4", 1/2"

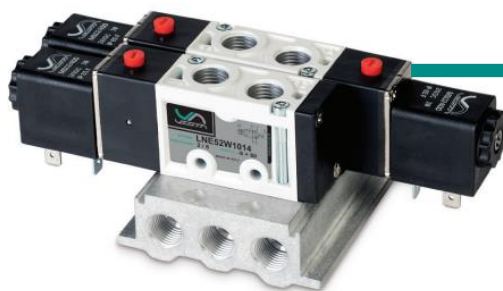
Temperature & dust resistant ATEX II 3GD valves



K VALVE

17mm coil - G1/8", 1/4", 1/2"

High-flow mini valves & solenoid valves

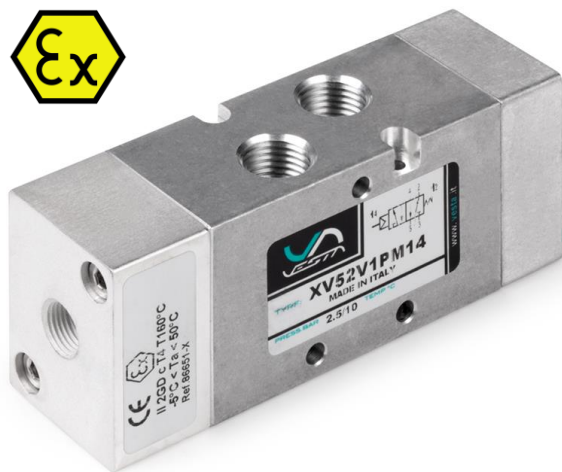


LN VALVE

22mm coil - G1/8", 1/4", 3/8"

Light die-cast body solenoid valves

ATEX II 2GD VALVES



ATEX SERIES

G1/4", 1/2", NAMUR

ATEX II 2GD valves, solenoid valves & Namur

MANUAL VALVES



VCML

G1/8", 1/4"

High-resistance manual lever valves



VCMT

G1/8", 1/4"

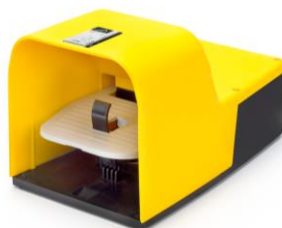
High-resistance button valves



MPF/MSR

Push-in Tube Ø4

Manual button micro valves



VFP

G1/4"

Foot pedal valves

MECHANICAL VALVES



VCLR

G1/8", 1/4"

High-resistance roller-lever valves



VCLL

G1/8", 1/4"

High-resistance lateral roller-lever valves



VCM

G1/8"

High-resistance cam actuated valves



MMA/MMR

Push-in Tube Ø4

Cam actuated & lever micro valves

PNEUMATIC LOGIC ELEMENTS



AND/OR/YES/NOT

Push-in Tube Ø4

Logic elements for pneumatic control



SBI

Push-in Tube Ø4

Two-hand safety valve

3/2 DIRECT ACTING & POPPET VALVES



QBE

G1/8"

3/2 direct acting solenoid valves



PV32

G1/2", 3/4", 1", 1½", 2"

3/2 high-flow air & vacuum poppet valves

MULTIPOLE CONNECTION MANIFOLDS

NEW



EWJ PLUG-IN VALVE TERMINAL

Push-in Tube Ø4

Self-configuration, high-modularity valve island



MVP

G1/8", 1/4"

Integrated electrical connection manifold



AIR TREATMENT RANGE MAP

VIDEO INTRODUCTION 

Pressure Regulators



FRL modular lines



High precision regulators



Proportional valves



PRESSURE REGULATORS



TU-R2

G1/8", 1/4"

Pressure microregulators with backflow option



TU-R3/5

G1/4", 3/8", 1/2", 3/4", 1"

Pressure regulators with backflow option



INOX-OX

G1/4"

NSF compliant oxygen microregulator

MODULAR LINES (FRL)



TU-FRL

G1/4", 3/8", 1/2", 3/4", 1"

Modular lines (filter, regulation, lubrication)



TU-VM

G1/4", 3/8", 1/2", 3/4", 1"

3/2 manual on-off valve



TU-VS

G1/4", 3/8", 1/2"

Slow start + shut-off element

HIGH-FLOW & HIGH-PRESSURE ELEMENTS



NEW



TU-FRL4H

G1/2"

High-pressure regulators (0-15bar) & FRL

TU-FR6/7

G1 ½", 2"

High-flow filters & regulators

HIGH-PRECISION REGULATION



HPR SERIES

G1/8", 1/4", 1/2"

High precision manual pressure regulator



DPV SERIES

G1/8", 1/4", 1/2"

Proportional valve with electric control



DPS SERIES

G1/8"

Digital pressure switch



FITTINGS

RANGE MAP

Quick **push-in fittings**
& **mini fittings**



Brass fittings



Speed controllers



Stainless steel fittings



Control valves



FITTINGS & MINI FITTINGS



QF/QM

1/8", 1/4", 3/8", 1/2"

Quick push-in fittings and mini fittings



QB

1/8", 1/4", 3/8", 1/2"

Brass push-in fittings



QX

1/8", 1/4", 3/8", 1/2"

Stainless steel push-in fittings



QV

1/8", 1/4", 3/8", 1/2"

Control valves

FLOW REGULATION



SCR

G1/8", 1/4", 3/8", 1/2"

Precision speed controllers



QR

1/8", 1/4", 3/8", 1/2"

Push-in speed controllers



QS

1/8", 1/4", 3/8", 1/2"

Silencers & exhaust control silencers



Custom pneumatic cylinders and valves for **hard environments**, with **special functions** or for different fluids.

Ask for more: info@vesta.it



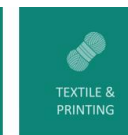
VACUUM &
MANIPULATION



AUTOMOTIVE
& TRUCKS



RAILWAYS
& RIDES



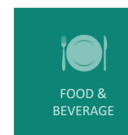
TEXTILE &
PRINTING



WELDING &
SIDERURGICAL



PACKAGING
& LOGISTICS



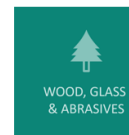
FOOD &
BEVERAGE



BIOMEDICAL
& PHARMA



PROCESS
INDUSTRIES



WOOD, GLASS
& ABRASIVES

Vesta Automation S.r.l.

Via Martiri di Belfiore 69/A

45100 Rovigo – Italy

Tel. +39 0425 474838

E-mail: info@vesta.it

Website: www.vesta.it

 @gruppovesta

  Vesta Automation Srl

