

Type: \_\_\_\_\_ Model: \_\_\_\_\_

Project: \_\_\_\_\_



# EPIC

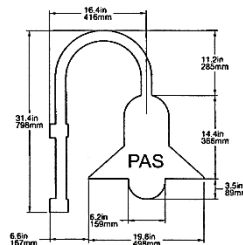
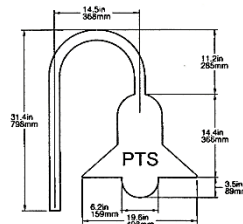
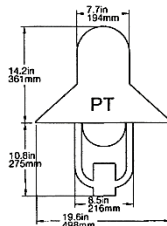
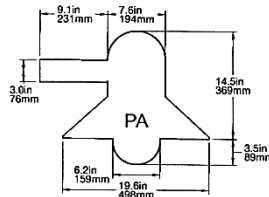
## LED Pole Mount



shown with straight pole arm side mount (-PA)



Dome Top Cone Top



**General:** The classic contemporary style of the Epic series blends well into a variety of architectural styles, both past and present. Appropriate for pedestrian scale installations, the varied mounting configurations provide an aesthetic appeal.

**Construction:** Top, housing, and mounting gear are constructed of low copper content cast aluminum. Shade shall be spun aluminum. Stainless steel external hardware to protect against the exterior elements.

**Lens:** Glass globe available in opal (-OL) or clear (-CL).

**Tops:** Two (2) top styles available: Cone (-C) (straight arm only) and Dome (-D).

**LED Light Engine:** LED module located in upper housing with LED module offering 37 nominal input watts. Available in color temperatures of 3000K, 3500K, 4000K, and 5000K. Minimum CRI = 80.

**Driver:** Constant current LED driver; input voltage of 120v to 277v, mounted internal to fixture.

**Heat Sink:** Finned heat sink shall be extruded aluminum and shall be located in housing above LED module.

**Mounting:** Four (4) pole mount styles available: straight pole arm (-PA), post top (-PT), post top shepherds crook (-PTS), and side arm shepherds crook (-PAS).

**Pole:** See Intrigue "Pole Specification Guide" for product detail.

**Finish:** Textured polyester powder coat finish. Shade underside is standard white finish. Black, bronze, grey, white, silver, and verde green options available. For custom colors, please consult factory.

**Gaskets:** EPDM gaskets standard.

EPA and Weight:	EPA	PA	0.69ft <sup>2</sup>
	PT	0.67ft <sup>2</sup>	
	PTS	0.86ft <sup>2</sup>	
	PAS	0.88ft <sup>2</sup>	
Weight	PA	26lbs	
	PT	28lbs	
	PTS	26lbs	
	PAS	27lbs	

**Listings:** ETL Listed to UL 8750. IESNA LM79.



Type: \_\_\_\_\_ Model: \_\_\_\_\_

Project: \_\_\_\_\_



SERIES      MOUNTING      WATTAGE      CCT (kelvin)      TOP STYLE      LENS      VOLTAGE      FINISH

## FIXTURE DETAIL

**SERIES**       **EC**      Epic Pole Mount

**MOUNTING**       **PA**      Straight Arm Pole Mount  
 **PAS**      Side Arm Shepherds Crook Mount  
 **PT**      Post Top Mount (on 2-3/8" tenon)  
 **PTS**      Post Top Shepherds Crook Mount

**WATTAGE**       **37LED**      37 input watts

Nominal Watts	Nominal Lumens	Lumens/Watt (LPW)	CCT (Kelvin)	CRI	Rated Life (L85)	Drive Current (mA)	Nominal Voltage
	3,700	100	3000				
37	3,750	101	3500	> 80	50,000 hrs	700mA	48.0
	3,750	101	4000				
	3,800	103	5000				

**COLOR (kelvin)**       **30K**      3000K  
 **35K**      3500K  
 **40K**      4000K  
 **50K**      5000K

**TOP STYLE**       **C**      Cone  
 **D**      Dome

**LENS**       **CL**      Clear Glass Globe  
 **OL**      Opal/Translucent Glass Globe

**VOLTAGE**       **UNV**      120v – 277v; output current 700mA

**FINISH**       **BLK**      Black finish       **VGN**      Verde Green finish  
 **BRZ**      Bronze finish       **WHT**      White finish  
 **GRY**      Grey finish       **CC**      Custom Color – consult factory  
 **SIL**      Silver finish       **WGF**      Woodgrain finish – consult factory

IES files can be found on website.

Content of specification sheets is subject to change. Please consult website for current product detail.

